

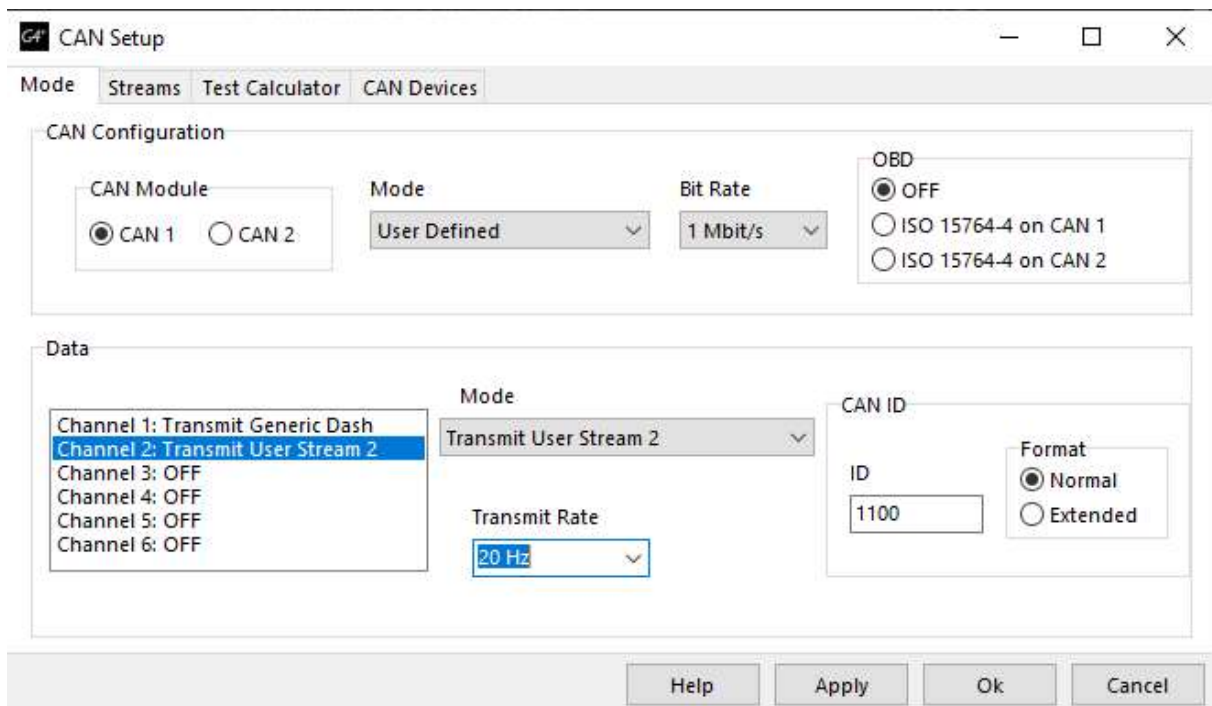
PowerTune Digital Custom CAN Stream for LINK ECU Setup

Set Channel 2 to Transmit User Stream 2

Make the Transmit rate 20 Hz

Set CAN ID for Channel 2 to ID 1100

Note : Link only allows a certain amount of Values to be sent via CAN Stream . So only add the ones that are needed .

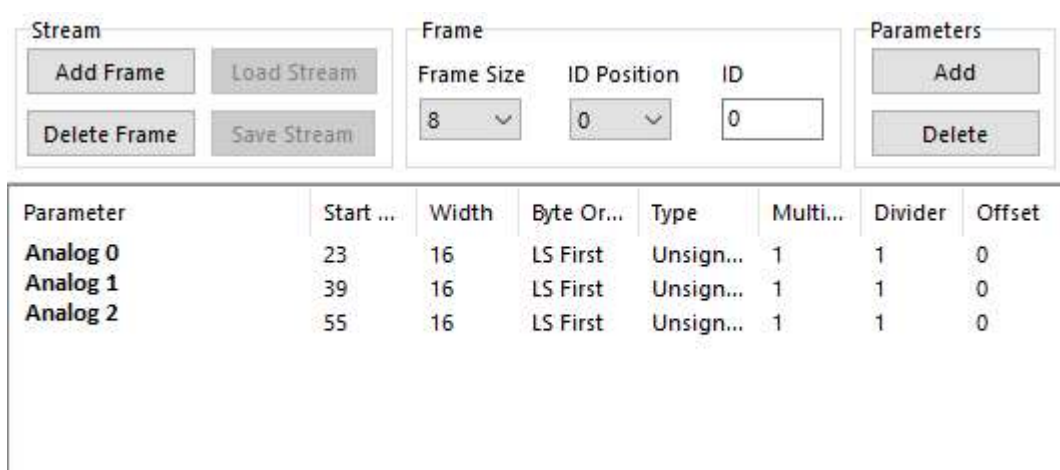
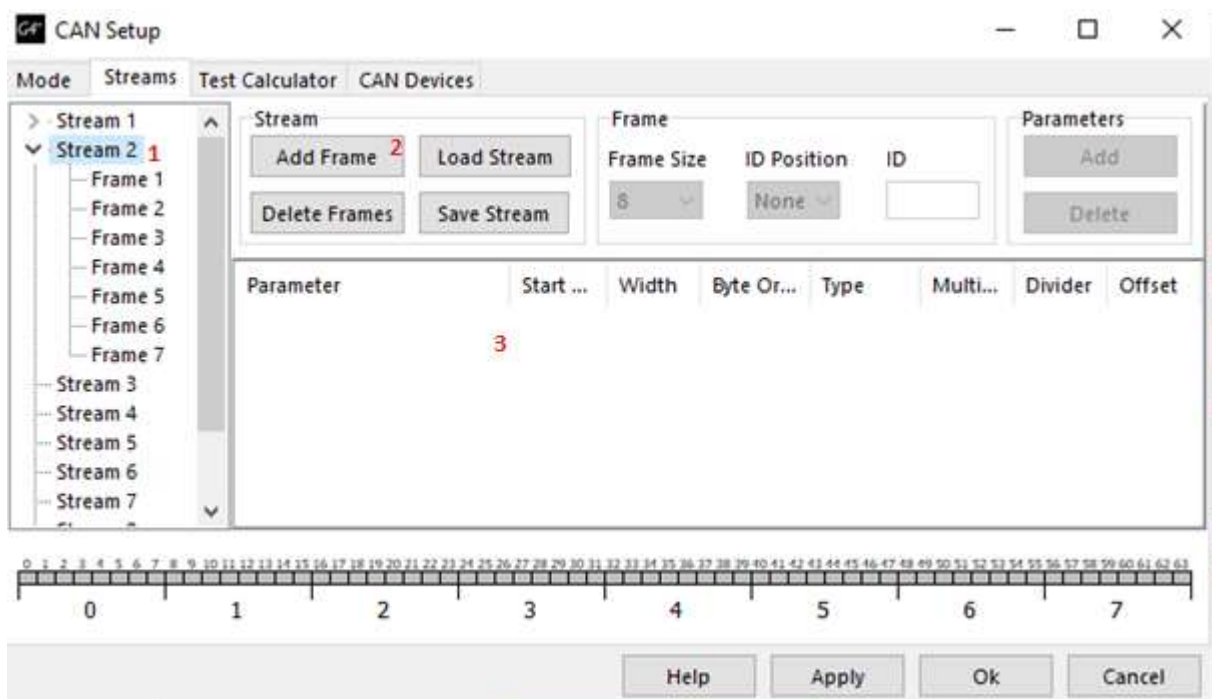


Click The Streams Tab and go to stream 2 (1)

Click Add Frame (2)

Right click on in the field Parameter (3) and select Add parameter

Please note the Parameter names in the screenshot just show what it will correspond to in PowerTune .



Stream

Add Frame Load Stream

Delete Frame Save Stream

Frame

Frame Size ID Position ID

8 0 1

Parameters

Add

Delete

Parameter	Start ...	Width	Byte Or...	Type	Multi...	Divider	Offset
Analog 3	23	16	LS First	Unsign...	1	1	0
Analog 4	39	16	LS First	Unsign...	1	1	0
Analog 5	55	16	LS First	Unsign...	1	1	0

Stream

Add Frame Load Stream

Delete Frame Save Stream

Frame

Frame Size ID Position ID

8 0 2

Parameters

Add

Delete

Parameter	Start ...	Width	Byte Or...	Type	Multi...	Divider	Offset
Turbo RPM 1	23	16	LS First	Unsign...	1	10	0
Turbo RPM 2	39	16	LS First	Unsign...	1	10	0
Fuel Level	55	16	LS First	Unsign...	1	10	0