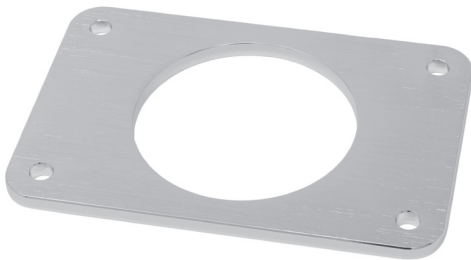


★ ★ SPECIALIZED MARINE PARTS ★ ★

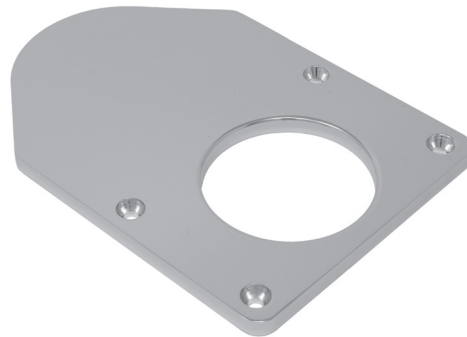
OUTRIGGER PLATES

All outrigger plates are made of anodized aluminum with a polished or brushed finish. They include a standard 3-1/8" center hole and a 3" x 5" mounting pattern.

Dimensions	Thickness	Finish	Notes	Part Number
4" x 6"	1/4"	Brushed		HTMP - 4X6
6" x 8-3/4"	3/8"	Polished	Shaped End	TT - 007
5" x 11-3/4"	1/2"	Polished	5/16 - 16 Thread Pattern	WAHOO PLATE
5-1/2" x 24"	1-1/4"	Top - Polished	5/16 - 16 Thread Pattern	OUTR - 24
		Bottom - Brushed		



HTMP - 4X6



TT - 007



Wahoo Plate



OUTR - 24

A black rubber plug is available for the 24" plate, OUTR - 24, for when outriggers are not being used.

Part Number: WAHOO PLUG



Wahoo Plug

SKI TOW MOUNTS

Several different mounting options are available for ski tows. All are made of anodized aluminum with a polished finish.



BALL WITH FLAT MOUNT
1- $\frac{3}{4}$ " mounting base & 3" tall

Part Number: SKIROPEMT



COPE MOUNT
Fits 1- $\frac{1}{4}$ " or 1- $\frac{1}{2}$ " pipe & is 3" tall

Part Number: SKIROPE-COPE



SWIVELING WITH FLAT MOUNT
2" mounting base & 4- $\frac{1}{4}$ " tall
with white delrin swivel

Part Number: SKICAP-2002



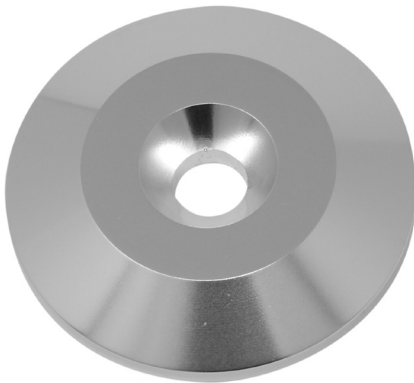
SWIVELING WITH LIGHT
& COPE MOUNT
Fits 2" pipe & is 5- $\frac{1}{2}$ " tall

Part Number: SKITOP-LIGHT

HARD TOP ACCESSORIES

WASHERS - Aluminum washer with standard #14 countersink. Available in multiple finishes, anodized, mill, or white powder coat. Available in 1-1/2" and 2-3/8" diameters.

Part Number: HT - WASHER



BUSHINGS - Anodized aluminum bushing with standard #14 countersink. Brushed finish. Available in 1" or 1.5" lengths.

Part Number: HT - 1 or HT - 1.5



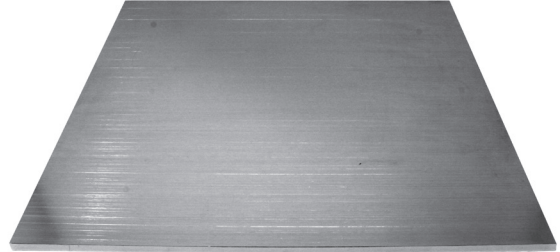
MOUNTING ANGLES - Anodized aluminum with standard #14 countersink holes, 1/4" Thick

Dimensions	Holes	Brushed - Anodized -	Polished - Anodized
2" x 2" x 4"	2	MA - 4	MAP - 4
2" x 2" x 6"	3		MAP - 6
2" x 2" x 8"	4		MAP - 8



MINI PLATES - Anodized aluminum plate with a brushed finish, 1/4" Thick

Size	Part Number
12"x12"	MPB - 12x12
12"x24"	MPB - 12x24
12"x48"	MPB - 12x48



RAIL MOUNTING HARDWARE

Anodized aluminum with standard #14 countersink hole. Clear finish. 1-1/16" opening.



EC - 101



MS-101

GIMBAL

Accepts 1" pipe and fits in standard rod holder pins.



Gimbal

THREADED ANTENNA MOUNT

Designed to fit standard antennas. These are machined with a 1" - 14 thread pattern and come in thin wall and heavy wall versions.



TAM-102
Thin Wall



TAM-103
Heavy Wall