

★ ★ ★ END CAPS ★ ★ ★

All end caps are machined from aluminum and are anodized with a polished, bright dipped finish. They are designed to fit schedule 40 pipe.

END CAPS

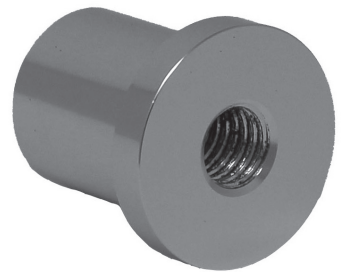
Diameter	Round	Flat	Threaded	Flush	Plastic - Black
3/4"	PECA - .75	FECA - .75	FECA - .75 5/16" FECA - .75 3/8"		PECP - .75
1"	PECA - 1	FECA - 1	FECA - 1 3/8"	EC - 1	PECP - 1
1-1/4"	PECA - 1.25				PECP - 1.25
1-1/2"	PECA - 1.5				PECP - 1.5
2"	PECA - 2			EC - 2	
2" x 2"					SECP - 2



Round



Flat



Threaded



Flush



Plastic

OVAL END CAPS

Size	Oval	Flat
1" x 1-1/2"	OEC - 1.5	FOEC - 1.5
1" x 1-7/8"	OEC - 1.875	FOEC - 1.875
1-1/4" x 3"	OEC - 3	FOEC - 3
1-1/4" x 4"	OEC - 4	FOEC - 4



Oval



Flat

HALYARD TIPS

Diameter	Brushed - Anodized	Polished - Anodized	Gold - Anodized
3/4"		HT - .75C	HT - .75G
3/4" - 18" Length	FSB	FSP	
1"		HT - 1C	HT - 1G
1" - 18" Length		HT - 18C	



HT-1C



HT-18C