

ATOMIC DIGITAL CLOCK



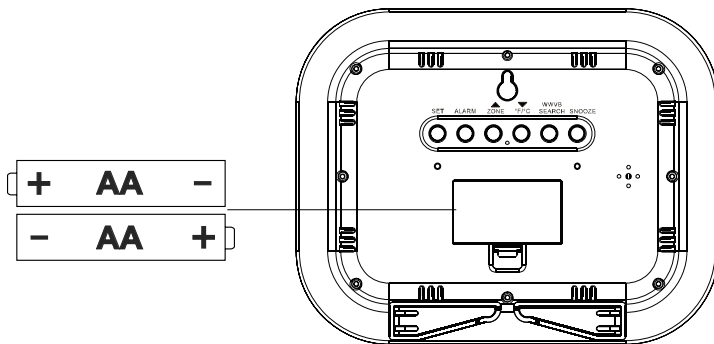
MODEL: WT-8005U
DC:070218

POWER UP

1. Insert 2-AA batteries into your Digital Clock.
2. After Power Up, your clock will search for the Atomic Time Signal for 7 minutes. Buttons will not function during the search. When Atomic Time Signal is received, the clock will set itself to Pacific time zone (default). Press the ZONE button to select your time zone.

OR

3. Press the WWVB SEARCH button to stop the initial Atomic Time Search and set the time manually.
 - The clock will search for the Atomic Time Signal again after midnight.
 - Press WWVB SEARCH button anytime, to start an Atomic Signal Search.
 - For information about WWVB Atomic time visit: <http://bit.ly/AtomicTime>



SETTINGS

1. Hold the SET button to enter the Settings Menu.
2. Press the ARROW buttons to adjust the values. Hold to adjust quickly.
3. Press the SET button to confirm and move to the next item.
4. Press the LIGHT button to exit.

Settings Menu Order:

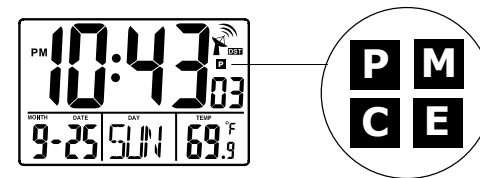
- 12/24 Hour • Hour • Minutes • Year • Month • Date
- DST on/oF (ON/OFF)

Note: Weekday will set automatically when Year, Month and Date are set.

TIME ZONE SELECTION

Press and release the ZONE button to select from four North American Time Zones:

P = Pacific • M = Mountain • C = Central • E = Eastern



FAHRENHEIT / CELSIUS

Press and release the °F/°C button to select Fahrenheit or Celsius temperature display.


TIME ALARM

Set Alarm Time:

1. Hold the ALARM button to enter Alarm Settings Menu. The Seconds will be replaced by the letters “AL”.
2. The Alarm Hour will flash. Use the ARROW buttons to adjust values. Press the ALARM button to confirm and move to the minutes.
3. The Alarm Minutes will flash. Use the ARROW buttons to adjust values. Press the ALARM button to confirm and exit.

Activate/Deactivate Alarm:

Setting the alarm time and activating the alarm are separate steps.

1. Press the ALARM button to view alarm time.
2. Press and release the UP ARROW to activate or deactivate the Time Alarm.
3. The Alarm Icon (bell) will appear when active. 
4. The Alarm Icon (bell) will disappear when inactive.

Snooze:

- When the alarm sounds, press the SNOOZE button to silence the alarm for 5 minutes.
- Press any button (except SNOOZE) to silence the alarm for 24 hours.

RESET BUTTON

- If the Digital Clock display appears distorted or is not responding to buttons, use a pen or paper clip to press RESET one time.
- This will reset the atomic clock to default settings.

SPECIFICATIONS

Indoor Temperature Range: 32°F to 122°F (0°C to 50°C)

Power Requirements: 2 AA batteries (not included)

Battery Life: 24 months

Dimensions: 8.9" L x 1.2" W x 7.2" H (22.60 L x 3.04W x 18.2 H cm)

WE'RE HERE TO HELP!

If you require additional support, call or customer support team based out of La Crosse, Wisconsin.

Phone: 1.608-782-1610

Or fill out our online support request form here: bit.ly/contact_techsupport

Our knowledgeable support team is available: Monday-Friday, 8am-6pm CST

JOIN THE CONVERSATION

Ask questions, watch detailed setup videos, and provide feedback on our social media outlets!



WARRANTY INFO

La Crosse Technology, Ltd. provides a **1-year limited time warranty** (from date of purchase) on this product relating to manufacturing defects in materials & workmanship.

For Full Warranty Details, Visit: www.lacrossetechnology.com/support

CARE + MAINTENANCE

- Do not mix old and new batteries.
- Do not mix Alkaline, Lithium, standard, or rechargeable batteries.
- Always purchase the correct size and grade of battery most suitable for intended use.
- Clean the battery contacts and also those of the device prior to battery installation.
- Ensure the batteries have with correct polarity (+ / -).
- Remove batteries from equipment that will not to be used for an extended period.
- Promptly remove expired batteries.

CANADA STATEMENT

This device complies with CNR Industry Canada license -exempt devices. Operation is subject to the following two conditions:

- (1) This device may not cause interference; and
- (2) This device must accept any interference, including interference that may cause undesired operation of the device.

FCC STATEMENT

This equipment has been tested and found to comply with the limits for a Class B digital device, pursuant to part 15 of the FCC Rules. These limits are designed to provide reasonable protection against harmful interference in a residential installation. This equipment generates, uses and can radiate radio frequency energy and, if not installed and used in accordance with the instructions, may cause harmful interference to radio communications. However, there is no guarantee that interference will not occur in a particular installation. If this equipment does cause harmful interference to radio or television reception, which can be determined by turning the equipment off and on, the user is encouraged to try to correct the interference by one or more of the following measures:

- Reorient or relocate the receiving antenna.
- Connect the equipment into an outlet on a circuit different from that to which the receiver is connected.
- Increase separation between equipment & receiver.
- Consult the dealer or an experienced radio/TV technician for help.

This device must not be co-located or operating in conjunction with any other antenna or transmitter.

Operation is subject to the following two conditions:


- (1) This device may not cause harmful interference, and
- (2) This device must accept any interference received, including interference that may cause undesired operation.

CAUTION!

The manufacturer is not responsible for any radio or TV interference caused by unauthorized changes or modifications to this equipment. Such changes or modifications could void the user authority to operate the equipment.

All rights reserved. This manual may not be reproduced in any form, even in part, or duplicated or processed using electronic, mechanical or chemical process without the written permission of the publisher.

This booklet may contain errors or misprints. The information it contains is regularly checked and corrections are included in subsequent editions. We disclaim any responsibility for any technical error or printing error, or their consequences. All trademarks and patents are recognized.

 **WARNING:** This product can expose you to chemicals including styrene, which is known to the State of California to cause cancer. For more information go to: www.P65Warnings.ca.gov