

LA CROSSE®
TECHNOLOGY

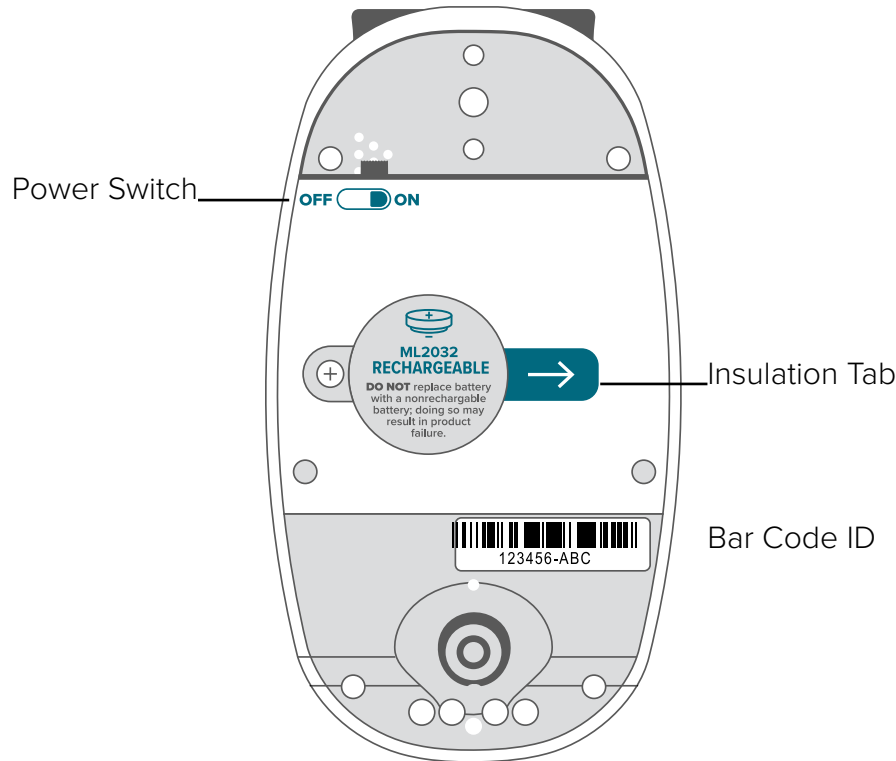
BREEZE PRO SENSOR



Model: LTV-WSDTH01
DC: 020222


POWER UP

Remove the Insulation Tab from the Battery Compartment of your Breeze Pro Sensor, and make sure the power switch is turned **ON**.



CONNECT TO LA CROSSE VIEW™ APP

If you already own a La Crosse View connected display, you can use your La Crosse View app to monitor your Rain Sensor's readings right on your phone.

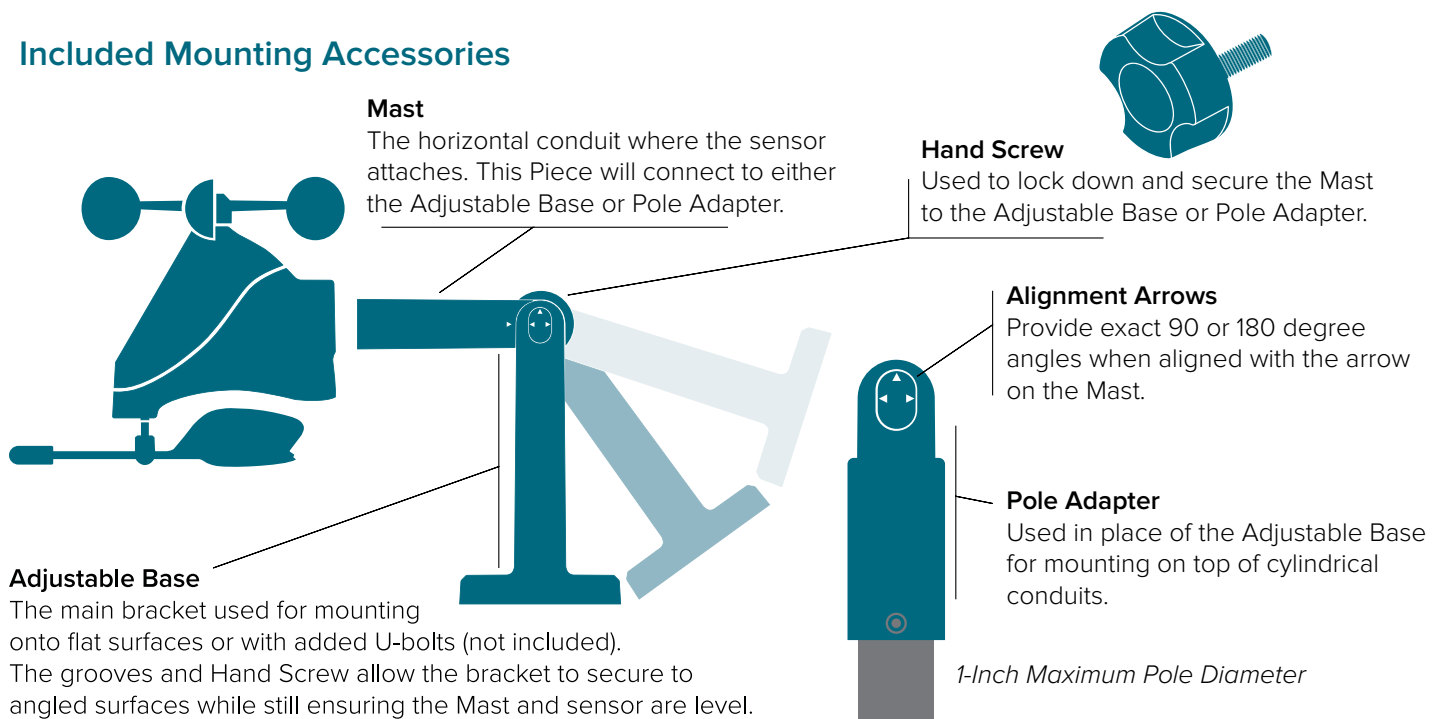
1. Open your La Crosse View app and select ADD DEVICES from the main menu.
2. Scan the Bar Code  or type in the Device ID on the bottom of your sensor.
3. Give the device a Name and Location, and press Save. Within the next few minutes you should begin seeing your Wind Speed, Wind Direction, Temperature & Humidity data within your app.

MOUNTING

For Accurate Measurements

- **Ensure the sensor is mounted level with the Solar Panel facing directly to the south.** This will help optimize battery life and transmit correct wind direction readings.
- Ideally, the Breeze Pro Sensor should be mounted on the tallest object in your area. Avoid positioning the sensor in line or below eaves, rooflines, trees, or other objects that may obstruct wind readings.
- Make sure all screws on the Mounting Bracket, Winds Cups, Wind Vane, and Battery Compartment are securely fastened.
- The sensor should be mounted with the Wind Cups on top.

Included Mounting Accessories



For additional sensor information, visit: www.lacrossetechnology.com/support

The illustrations above are not to scale and are for informative purposes only.

Basic Installation Options

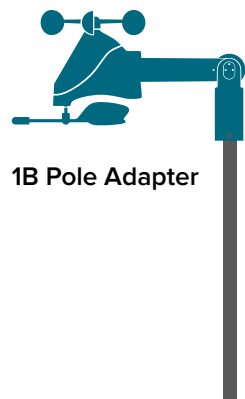
Fence posts, poles, decks, and even mailboxes are all common mounting options due to their convenience. Many users prefer these types of locations as the data they provide is accurate from their ground level perspective. However, because wind in these spots is often affected by obstructions, the readings may differ compared to local reporting stations.



1A Adjustable Base

Basic Assembly

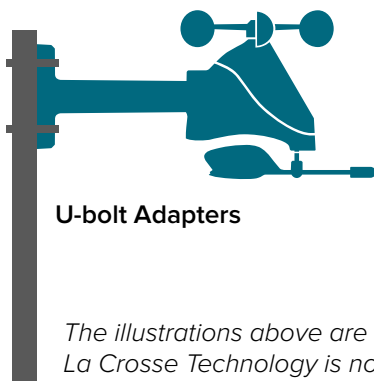
- 1A. Mount the Adjustable Base onto a flat surface using the provided four long screws.
- 1B. Secure the Pole Adapter to a cylindrical conduit using the provided two small screws.
2. Insert the Mast into the Breeze Pro Sensor and tighten the provided screws on the sides.
3. Use the Hand Screw to attach the Mast to either the Adjustable Base or Pole Adapter. Ensure the sensor is level, facing south, and securely fastened at all mounting points.



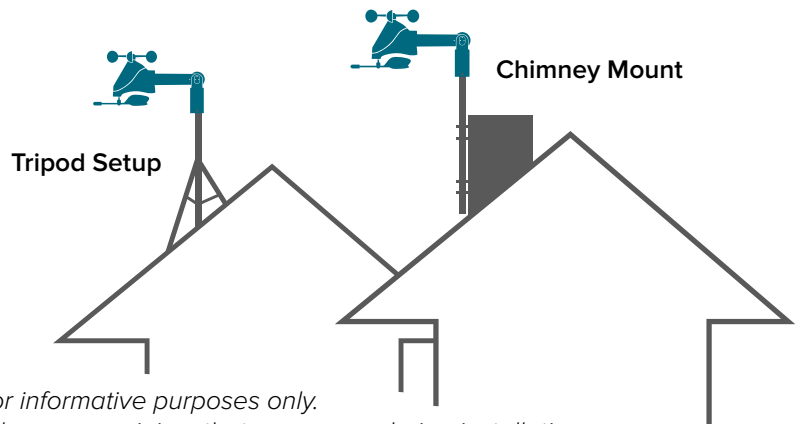
1B Pole Adapter

Advanced Installation Options

Some advanced installation options include tripods, wall mounts, eave cross mounts, chimney mounts, and many others. Any of these can be combined with U-bolts for attachment onto a tall cylindrical conduit using our Adjustable Base. Please note that these advanced options will require additional equipment and possibly professional help for best results.



U-bolt Adapters



Tripod Setup

Chimney Mount

The illustrations above are not to scale and are for informative purposes only.

La Crosse Technology is not responsible for any damages or injury that may occur during installation.

CARE + MAINTENANCE

- Do not mix old and new batteries.
- Do not mix Alkaline, Lithium, standard, or rechargeable batteries.
- Always purchase the correct size and grade of battery most suitable for intended use.
- Clean the battery contacts and also those of the device prior to battery installation.
- Ensure the batteries have with correct polarity (+ / -).
- Remove batteries from equipment that will not to be used for an extended period.
- Promptly remove expired batteries.

SPECIFICATIONS

- **Wind Speed Range:** 0 to 111 mph (0 to 178 km/h)
- **Degrees of Wind Direction:** 360° with 16 Cardinal Directions
- **Outdoor Temp. Range:** -4°F to 140°F (-20°C to 60°C)
- **Outdoor Humidity Range:** 10 to 99%RH
- **Transmission Range:** 400 Feet (121.92 Meters)
- **Power Requirements:** 1 Rechargeable ML2032 Coin Cell Battery (included)
Please Note: Using a non-rechargeable coin cell battery can potentially ruin the sensor. Ensure the replacement battery specifically states that it's a **ML2032 Rechargeable Battery**.
- **Update Interval:** Every 31 Seconds
- **Sensor Dimensions:**
 - **With Bracket:** 6.21" L x 12.28" W x 9.87" H (15.77cm L x 31.19cm W x 25.07cm H)
 - **Without Bracket:** 6.21" L x 8.25" W x 6.67" H (15.77cm L x 20.96cm W x 16.94cm H)

WARRANTY INFO

La Crosse Technology, Ltd. provides a **1-year limited time warranty** (from date of purchase) on this product relating to manufacturing defects in materials & workmanship.

La Crosse Technology, Ltd, 2830 S. 26th St., La Crosse, WI 54601

For Full Warranty Details, Visit: www.lacrossetechnology.com/support

FCC STATEMENT

This equipment has been tested and found to comply with the limits for a Class B digital device, pursuant to part 15 of the FCC Rules. These limits are designed to provide reasonable protection against harmful interference in a residential installation.

This equipment generates, uses and can radiate radio frequency energy and, if not installed and used in accordance with the instructions, may cause harmful interference to radio communications. However, there is no guarantee that interference will not occur in a particular installation. If this equipment does cause harmful interference to radio or television reception, which can be determined by turning the equipment off and on, the user is encouraged to try to correct the interference by one or more of the following measures:

- Reorient or relocate the receiving antenna.
- Connect the equipment into an outlet on a circuit different from that to which the receiver is connected.
- Increase separation between equipment & receiver.
- Consult the dealer or an experienced radio/TV technician for help.

This device must not be co-located or operating in conjunction with any other antenna or transmitter.

Operation is subject to the following two conditions:

- (1) This device may not cause harmful interference, and
- (2) This device must accept any interference received, including interference that may cause undesired operation.

CAUTION!

The manufacturer is not responsible for any radio or TV interference caused by unauthorized changes or modifications to this equipment. Such changes or modifications could void the user authority to operate the equipment.

All rights reserved. This manual may not be reproduced in any form, even in part, or duplicated or processed using electronic, mechanical or chemical process without the written permission of the publisher.

This booklet may contain errors or misprints. The information it contains is regularly checked and corrections are included in subsequent editions. We disclaim any responsibility for any technical error or printing error, or their consequences. All trademarks and patents are recognized.



WARNING: This product can expose you to chemicals including styrene, which is known to the State of California to cause cancer. For more information go to: www.P65Warnings.ca.gov