

# LA CROSSE® TECHNOLOGY



## Wi-Fi WIND + WEATHER STATION

**SET UP GUIDE**

MODEL NUMBER C78861-UK / C78861-EU

# Table of Contents

---

## BASICS

Initial Setup	<b>02</b>
Station Settings	<b>06</b>
Buttons	<b>07</b>
LCD Display Brightness	<b>08</b>
Auto-Dim Settings	<b>08</b>
Positioning Your Sensor	<b>09</b>
Installation Options	<b>10</b>

## LA CROSSE VIEW

Connecting to the App	<b>03</b>
Connecting Your Station	<b>04</b>
Adding Your Sensor to the App	<b>05</b>

## WIND

Viewing Your Wind Data	<b>11</b>
History Records	<b>12</b>
Wind Speed Alert	<b>12</b>

## TEMP. & HUMIDITY (TH)

Viewing Your TH Data	<b>13</b>
History Records	<b>14</b>
"Feels Like" Temp.	<b>14</b>

## PRESSURE

Relative Pressure	<b>14</b>
-------------------	-----------

## FORECAST

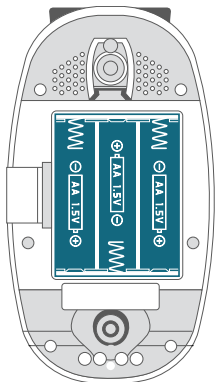
Seasonal Trees	<b>15</b>
Standalone Forecast Icons	<b>15</b>
Enhanced Forecast Data	<b>16</b>
Daily/Hourly Forecast	<b>16</b>

## APPENDIX

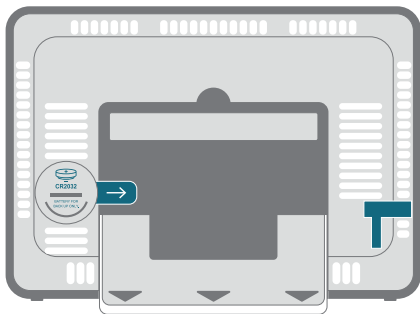
Specifications	<b>17</b>	Cautions/Statements	<b>17-19</b>
Recycling & Disposal	<b>18</b>	Support	<b>19</b>
Patents	<b>18</b>		

# Initial Setup

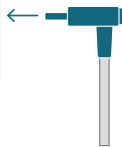
## Power Up



Bottom of Breeze Pro Sensor



Back of Station



Power Jack

1. Install 3 “AA” batteries into the Battery Compartment of your Breeze Pro Sensor.
2. Insert the 5V Power Adapter into an outlet, and then plug it into the Power Jack on the back of the station. Next, remove the Insulation Tab from the station’s Battery Compartment.

Note: It may take up to 10 minutes for your sensor data to appear on your station’s screen.

## Connecting to the App



Stay connected to your home anytime, anywhere with the La Crosse View app.

Monitor home conditions and set alerts so your home can get ahold of you when something seems off.

Connecting your station is optional and the display will function as a standalone unit without the Wi-Fi connection. However, we recommend connecting during the initial setup, as it will save you time and unlock all of the advanced features right away.



### Download the La Crosse View App

Visit the App Store or Google Play Store to download the free La Crosse View app onto your mobile device.

### Launch the App

Open the La Crosse View app and follow the on-screen setup instructions.



For more information, scan the QR code or visit:

[www.lacrossetechnology.com/lacrosseviewsupport](http://www.lacrossetechnology.com/lacrosseviewsupport)

# Connecting Your Station

Now that you've created your La Crosse View account, it's time to connect your station to your home router using the La Crosse View app.

## Connecting to Your Wi-Fi Network

1. The La Crosse View app is required to connect the station to your Wi-Fi network. Download, install, and log into your La Crosse View account first.
2. Follow the initial app instructions or manually add the display into your account.

**New User Initial Setup:** When first setting up your station, the app will lead you through a series of instructions to help get your station added into your account and connected to your home Wi-Fi network.

**Manually Add & Connect Display:** After the initial walk-through, stations can be added and connected via the Devices tab in the app's main menu. Simply tap the **Add Device** or **Plus (+)** button at the bottom of the Devices page in the app.

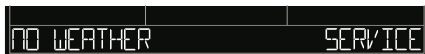
3. When connected, the  indicator on the display will become solid.

## Checking Your Station's Wi-Fi Status

Press the **SET** button on the top of the station to view your Wi-Fi Status.



**ALL OK CONNECTED:** Your station is connected to your Wi-Fi and its data should be available on the station and in the app.



**NO WEATHER SERVICE:** Your Internet weather and time services are not connecting. These should resolve on their own, please be patient.

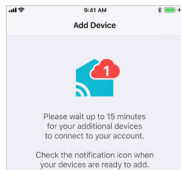


**SEE APP TO CONNECT:** Check your La Crosse View app for notifications.



**LOST WIFI:** Check your router and network connections.

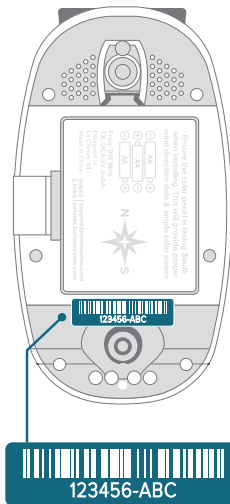
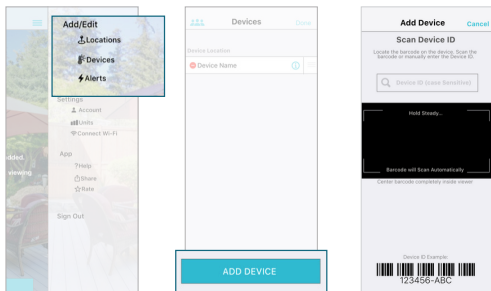
# Adding Your Sensor to the App



Upon getting the station connected to your Wi-Fi network, the next app screen will explain how your connected sensor(s) should be brought in. Within the next 15 minutes, you should receive an Add Device notification in your app. This is indicated by the Red Cloud and the numbers inside of it. Tap this icon to begin adding your sensor(s) into the app.

## Manually Add Sensor Into the App\*

1. Open your La Crosse View app. On the Main Menu, go to **ADD/EDIT** and select **DEVICES**.
2. On the Devices page, select the **ADD DEVICE** or **PLUS (+)** button.
3. Scan the Barcode on your Breeze Pro Sensor or type in the Device ID manually.
4. Confirm the sensor image and Device ID and add a Device Name and Location Name. Select **DONE**.



\* This step is only required if you do not receive the Add Device notification within the app. Prior to connecting to Wi-Fi and mounting your sensor, make sure your station is receiving sensor data.

# Station Settings

1. When the station is first powered on, it will begin searching for your outdoor sensor, which should connect shortly.
2. To manually set your time, date, and other settings, hold the **SET** button to enter the Settings Menu.

## Settings Menu Order

Greeting • Language • Beep On/Off • 24/12 Hour Time • Hour • Minute • Year  
 Month • Date • Calendar Order (Date/Month or Month/Date) • Celsius/Fahrenheit  
 Pressure Units (hPa/InHg) • Pressure Number Setting\* • Wind Speed Units (KMH  
 or MPH) • Wind Direction (Letters or Degrees) • Thank You



Use the **+/-** buttons on the top of the station to adjust the values.



Press the **SET** button to confirm selection and move to next step.

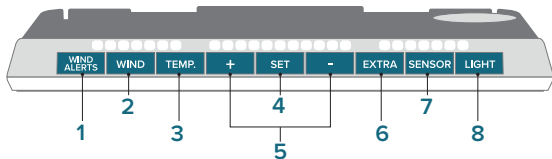


You may exit the Settings Menu at any time by pressing the **LIGHT** button.

\* The default pressure reading is 1013 hPa (29.92 INHg). The station will acclimate on it's own if the pressure number is not set. Learn more on page **14**

Notes: **Weekday** will set automatically after year, month, & date settings are adjusted. If you're connected to the **Wi-Fi**, the time and date will automatically update from the Internet. See pages **3-4** for more information.

## Buttons

**1. WIND ALERTS**

Press to turn Wind Alert on/off. Hold to enter Wind Alert Settings.

**2. WIND**

Press to view Wind Speed History. While viewing, hold the **MINUS** button to reset the history value.

**3. TEMP.**

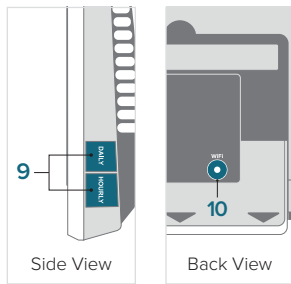
Press to view Temperature and Humidity History. While viewing, hold **MINUS** button to reset the history value. Hold to search for TH reading.

**4. SET**

Press to view Wi-Fi status. Hold to enter Settings Menu.

**5. PLUS/MINUS (+/-)**

Use to adjust values.

**6. EXTRA**

Press to toggle through extra sensors and pressure. Hold to add sensors. While viewing, hold the **MINUS** button delete the sensor.

**7. SENSOR**

Press to view sensor ID numbers. While viewing, hold the **MINUS** button delete the sensor.

**8. LIGHT**

Press to adjust backlight. Hold to enter Auto-Dim settings.

**9. DAILY/HOURLY**

Press to see Daily or Hourly Forecast. Hold to auto-scroll Forecast data.\*

**10. WIFI**

Press during initial setup for Wi-Fi Connection (see app). Hold to re-enter Configuration Mode and clear previous Wi-Fi settings.

\* Your display must be connected to Wi-Fi to receive Daily/Hourly forecast information.



# LCD Display Brightness



## Adjusting the LCD Display Brightness

Press the **LIGHT** button to adjust the backlight intensity. There are 4 brightness levels, plus an off option.

## Auto-Dim Settings

Program your display to automatically dim during preselected times.

1. Hold the **LIGHT** button to enter the Auto-Dim Settings Menu.
2. Press the **+/-** buttons to turn the Auto-Dim feature on or off. Press **LIGHT** to confirm.
3. Press the **+/-** buttons to adjust the starting hour. Press **LIGHT** to confirm.
4. Press the **+/-** buttons to adjust the stopping hour. Press **LIGHT** to confirm and exit.



The  icon will appear on the LCD when the Auto-Dim feature is activated.

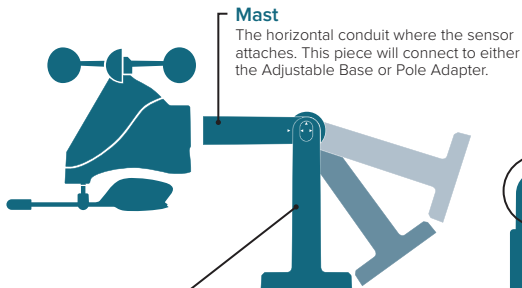
# Positioning the Breeze Pro Sensor



## For Accurate Measurements

- Ensure the sensor is mounted level with the Solar Panel facing directly to the south. This will help optimize battery life and transmit correct wind direction readings.
- Ideally, the Breeze Pro Sensor should be mounted on the tallest object in your area. Avoid positioning the sensor in line or below eaves, rooflines, trees, or other objects that may obstruct wind readings.
- Make sure all screws on the Mounting Bracket, Winds Cups, Wind Vane, and Battery Compartment are securely fastened.
- The sensor should be mounted with the Wind Cups on top.

## Included Mounting Accessories



### Mast

The horizontal conduit where the sensor attaches. This piece will connect to either the Adjustable Base or Pole Adapter.

### Hand Screw

Used to lock down and secure the Mast to the Adjustable Base or Pole Adapter.

### Alignment Arrows

Provide exact 90 or 180 degree angles when aligned with the arrow on the Mast.

### Pole Adapter

Used in place of the Adjustable Base for mounting on top of cylindrical conduits.

### Adjustable Base

The main bracket used for mounting onto flat surfaces or with added U-bolts (not included). The grooves and Hand Screw allow the bracket to secure to angled surfaces while still ensuring the Mast and sensor are level.

1-Inch Maximum Pole Diameter

# Installation Options

## Basic Assembly

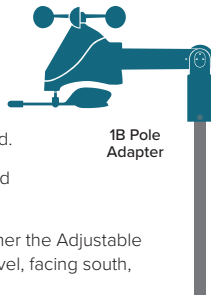
Fence posts, poles, decks, and even mailboxes are all common mounting options due to their convenience. Many users prefer these types of locations as the data they provide is accurate from their ground level perspective. However, because wind in these spots is often affected by obstructions, the readings may differ compared to local reporting stations.



1A Adjustable Base

### For Accurate Measurements

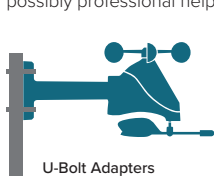
- 1A. Mount the Adjustable Base onto a flat surface using the four long screws provided.
- 1B. Secure the Pole Adapter to a cylindrical conduit using the two smaller screws provided.
2. Insert the Mast into the Breeze Pro Sensor and tighten the provided screws on the sides.
3. Use the Hand Screw to attach the Mast to either the Adjustable Base or Pole Adapter. Ensure the sensor is level, facing south, and securely fastened at all mounting points.



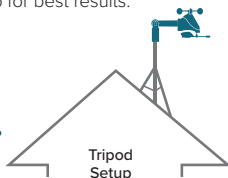
1B Pole Adapter

## Advanced Installation Options

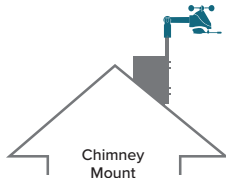
Some advanced installation options include tripods, wall mounts, eave cross mounts, chimney mounts, and many others. Any of these can be combined with U-bolts for attachment onto a tall cylindrical conduit using our Adjustable Base. Please note that these advanced options will require additional equipment and possibly professional help for best results.



U-Bolt Adapters



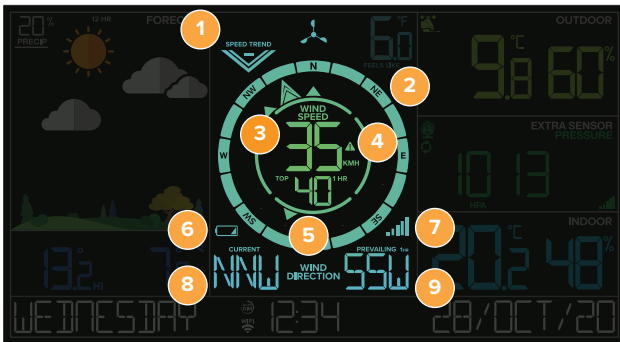
Tripod Setup



Chimney Mount

*The illustrations above are not to scale and are for informative purposes only. La Crosse Technology is not responsible for any damages or injury that may occur during installation.*

# Viewing Your Wind Data



## 1. WIND SPEED TREND INDICATOR

Shows wind speed trends over the past 60 minutes

## 2. COMPASS ROSE

Displays cardinal direction with animated arrows (16 directions total)

## 3. CURRENT WIND SPEED

The top wind speed in the past 31 seconds

## 4. WIND SPEED ALERT

Appears if a wind speed alert is set & active

## 5. TOP WIND SPEED

The top wind speed in the past 60 minutes

## 6. BREEZE PRO SENSOR LOW BATTERY ICON

Appears when the sensor's batteries need to be replaced

## 7. RECEPTION ICON

Indicates if the station is receiving data from the sensor

## 8. WIND DIRECTION

Choose between cardinal points (letters) or degrees in the Settings Menu for Current Wind Direction

## 9. PREVAILING DIRECTION

Prevailing Wind Direction over the past hour

# Wind Speed History and Alerts

## Viewing Wind Speed History Records

Press the **WIND** button to toggle through wind speed history records with time and date stamps.

The wind speed records include:  
past 24 hours, 7 days, 1 month, & 1 year.



*Monthly Wind Speed Record Example*

## Setting the Wind Speed Alert

1. Hold the **WIND ALERTS** button to enter the Alert Settings Menu.
2. Use the **+/-** buttons adjust wind speed alert settings. Press the **WIND ALERTS** button to confirm your selection.
3. Your wind speed alert is active when the **▲** icon on.

## Activate/Deactivate Wind Speed Alert

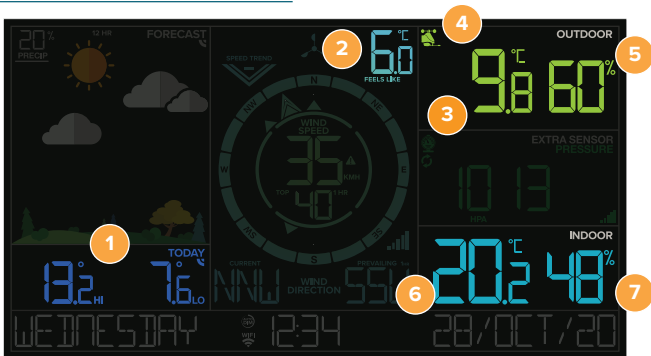


Press the **WIND ALERTS** button to activate/deactivate the alert. **WIND SPEED ALERT ON** or **OFF** will appear on the bottom of the LCD.

## Important Notes:

- The alert is defaulted to be off.
- When the armed alert value is reached, the station will beep and the icon will flash. Press any button to stop the alert sound.
- The Alert Icon will remain flashing until out of the alert range.
- This Wind Speed Alert is for the station only and will not affect the app.

# Viewing Your Temperature & Humidity Data



### 1. FORECASTED HIs & LOs\*\* (or Outdoor Records)

Daily Forecasted Highs & Lows from AccuWeather\*

### 2. “FEELS LIKE” TEMPERATURE

Based on current temp. & wind speed (heat index & wind chill)

### 3. OUTDOOR TEMPERATURE

Current Outdoor Temperature

### 4. BREEZE SENSOR ICON

Indicates TH readings are provided by the Breeze Pro Sensor

### 5. OUTDOOR HUMIDITY

Current Outdoor Humidity

### 6. INDOOR TEMPERATURE

Current Indoor Temperature

### 7. INDOOR HUMIDITY

Current Indoor Humidity

\*\*Your station must be connected to Wi-Fi to receive AccuWeather forecast data. If you're not connected, outdoor history records will be displayed.

# Temperature & Humidity Records

## Viewing Records

Press the **TEMP** button to toggle through temperature & humidity records with time and date stamps.

## Records Viewing Order

Outdoor High Temperature • Outdoor Low Temperature • Outdoor High Humidity • Outdoor Low Humidity  
 Indoor High Temperature • Indoor Low Temperature • Indoor High Humidity • Indoor Low Humidity  
 “Feels Like” High Temperature • “Feels Like” Low Temperature • Dew Point

## Resetting Individual Temperature and Humidity Records

1. Press the **TEMP** button to view the individual temperature and humidity values you'd like to reset.
2. Next, hold the **MINUS (-)** button until dashes appear on the LCD.
3. This reading is now reset to your current temperature or humidity value.

## “Feels Like” Temperature

This reading indicates both Wind Chill and Heat index values when conditions are met.

- **Wind Chill:** When temperature is below 10°C and there is 8 KMH sustained wind speed.
- **Heat Index:** When temperature is above 27°C.
- **Current Temperature:** When the temperature is between 5°C and 26°C, the reading will remain the same as the outdoor value regardless of humidity or wind speed.

## PRESSURE

# Relative Pressure



- Your Relative Pressure reading will come from your station's internal barometer.
- Please allow up to 10 days for automatic calibration, or program your local pressure value in the Settings Menu.
- The arrows located to the left of the values represents Pressure Tendency (rising/falling).

## FORECAST

# Viewing Your Forecast Data

## Seasonal Trees

The foliage scene in the forecast section changes seasonally. The dates are pre-programmed.

## Forecast Icons

When using this station without Wi-Fi connection, the display will use changes in barometric pressure to predict your weather to come in the next 12 hours. This is represented by the 6 forecast scenes below. However, when connected to Wi-Fi, the station will receive additional weather icons, chance of precipitation values, and future forecast information. These enhanced Internet features are powered by **AccuWeather**.\*

**Please Note:** The Forecast Icons may not represent your current weather. They are a future prediction of the weather to come over the next 12 hours.

## Available Forecast Icons on Standalone Station



Sunny



Partly Sunny



Clouds



Rain



T-Storm



Snow

## Foliage Scenes



Spring (March 20<sup>th</sup> to June 20<sup>th</sup>)



Summer (June 21<sup>st</sup> to Sept. 20<sup>th</sup>)



Fall (Sept. 21<sup>st</sup> to Dec. 20<sup>th</sup>)



Winter (Dec. 21<sup>st</sup> to March 19<sup>th</sup>)

\*Your display must be connected to Wi-Fi to receive AccuWeather forecast data.



## FORECAST

# Viewing Your Forecast Data

## Available Forecast Icons when Connected\*



Sunny



Partly Sunny



Clouds



Light Rain



Rain



T-Storm



Light Snow



Snow



Wintry Mix




Windy



Ice



Fog

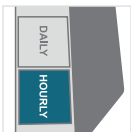
Tip: The  icon will appear in the top right corner of the forecast section when your display is connected and receiving AccuWeather forecasts.

## Daily & Hourly Forecast Buttons

When connected to Wi-Fi, use the **DAILY & HOURLY** buttons on the side of the station to view future forecast information.



**Daily Forecast:** Press the **DAILY** button on the side of the station to view individual Daily Forecasts. Hold to automatically scroll through all 7 days.



**Hourly Forecast:** Press the **HOURLY** button to view individual hourly forecasts. Hold to automatically scroll through all 12 hours.

# Specifications

## Wi-Fi NETWORK REQUIREMENTS

- **Broadcast Frequency:** 2.4GHz (802.11 b/g/n)
- **Network Name/Password:** Must Not Exceed 45 Characters
- **Network Speed:** Must Be Greater than 1 Mbps

**Please Note:** If you have multiple band router, this device will connect to the **2.4GHz** band when connecting to Wi-Fi.

## MOBILE REQUIREMENTS

- Apple phones require iOS with cellular or Wi-Fi service.
- Android phones require Android OS with cellular or Wi-Fi service.

## STATION SPECIFICATIONS

- **Indoor Temp. Range:** 0°C to 50°C (32°F to 122°F)
- **Indoor Humidity Range:** 10 to 99%RH
- **Relative Pressure Range:** 800 to 1100 hPa (23.62 to 32.48 InHg)
- **Power Requirements:**
  - **Primary Power:** 5.0V AC Adapter (included)  
*The plug on the power adapter is intended to serve as the disconnect device, the socket-outlet shall be installed near the equipment and shall be easily accessible.*
  - **Battery Backup:** 1 "CR2032" Coin Cell Battery (included)
- **Station Dimensions:**  
20.88cm L x 2.99cm W x 14.81cm H  
(8.22" L x 1.18" W x 5.83" H)
- **LCD Brightness:** 4 Intensity Levels + OFF  
(Programmable Auto-Dim Backlight Option)
- **Language Options:**  
English, Spanish, French, and German  
(Translation Available for Menus & Calendar)

## SENSOR SPECIFICATIONS

### (868-LTV-WSDTH03/868-LTV-WSDTH04)

- **Wind Speed Range:** 0 to 178 km/h (0 to 111 mph)
- **Degrees of Wind Direction:** 360° with 16 Cardinal Directions
- **Outdoor Temp. Range:** -40°C to 60°C (-40°F to 140°F)
- **Outdoor Humidity Range:** 10 to 99%RH
- **Transmission Range:** 121.92 Meters (400 Feet)
- **Power Requirements:** 3 "AA" batteries
- **Update Interval:** Every 31 Seconds
- **Sensor Dimensions:**
  - **With Bracket:** 15.77cm L x 31.19cm W x 25.07cm H  
(6.21" L x 12.28" W x 9.87" H)
  - **No Bracket:** 15.77cm L x 20.96cm W x 16.94cm H  
(6.21" L x 8.25" W x 6.67" H)



### WARNING

1. This product contains a button battery.
2. If swallowed, it could cause severe injury or death in just 2 hours.
3. Seek medical attention immediately.

### WARNING: KEEP BATTERIES OUT OF REACH OF CHILDREN

1. Swallowing may lead to serious injury in as little as 2 hours or death, due to chemical burns and potential perforation of the esophagus.
2. If you suspect your child has swallowed or inserted a button battery, immediately seek urgent medical assistance.
3. Examine devices and make sure the battery compartment is correctly secured, e.g. that the screw or other mechanical fastener is tightened.
4. Do not use if compartment is not secure.
5. Dispose of used button batteries immediately and safely. Flat batteries can still be dangerous.
6. Tell others about the risk associated with button batteries and how to keep their children safe.

# La Crosse Technology® Patents

Visit [www.lacrossetechnology.com/patents](http://www.lacrossetechnology.com/patents) for patent information.

## Care & Maintenance

- Do not mix old and new batteries.
- Always purchase the correct size and grade of battery most suitable for intended use.
- Ensure the batteries have with correct polarity (+/-).
- Promptly remove expired batteries.
- Do not mix Alkaline, Lithium, standard, or rechargeable batteries.
- Clean the battery contacts and also those of the device prior to battery installation.
- Remove batteries from equipment that will not to be used for an extended period.

## Red Directive 2014/53/EU

Summary of the Declaration of Conformity: We hereby declare that this wireless transmission device does comply with the essential requirements of RED Directive 2014/53/EU

**Black Forest Originals Grand Father Clock, Ltd.**

DBA La Crosse Technology, Ltd.

2809 Losey Blvd. So., La Crosse WI 54601



## Caution!

The manufacturer is not responsible for any radio or TV interference caused by unauthorized changes or modifications to this equipment. Such changes or modifications could void the user authority to operate the equipment.

**All rights reserved.** This manual may not be reproduced in any form, even in part, or duplicated or processed using electronic, mechanical or chemical process without the written permission of the publisher.

This booklet may contain errors or misprints. The information it contains is regularly checked and corrections are included in subsequent editions. We disclaim any responsibility for any technical error or printing error, or their consequences. All trademarks and patents are recognized.

## Recycling & Disposal

Please consider the environment when deciding to dispose of this product. Although household electronics are generally safe to use on a daily basis, incorrect disposal can cause negative and potentially irreversible impacts on our environment.

Check with local donation centers to see if your product can be donated for future use. If disposal is the only option, federal agencies, local governments, and certified retailers may have electronic recycling programs in place. Programs may vary based on location.

## FCC Statement

---

This equipment has been tested and found to comply with the limits for a Class B digital device, pursuant to part 15 of the FCC Rules. These limits are designed to provide reasonable protection against harmful interference in a residential installation. This equipment generates, uses and can radiate radio frequency energy and, if not installed and used in accordance with the instructions, may cause harmful interference to radio communications. However, there is no guarantee that interference will not occur in a particular installation. If this equipment does cause harmful interference to radio or television reception, which can be determined by turning the equipment off and on, the user is encouraged to try to correct the interference by one or more of the following measures:

- Reorient or relocate the receiving antenna.
- Connect the equipment into an outlet on a circuit different from that to which the receiver is connected.

### FCC Radiation Exposure Statement

This device complies with FCC radiation exposure limits set forth for an uncontrolled environment and it also complies with Part 15 of the FCC RF Rules. This equipment must be installed and operated in accordance with provided instructions and the antenna(s) used for this transmitter must be installed to provide a separation distance of at least 20 cm from all persons and must not be co-located or operating in conjunction with any other antenna or transmitter. End-users and installers must be provided with antenna installation instructions and consider removing the no-collocation statement.

- Increase the separation between the equipment and receiver.
- Consult the dealer or an experienced radio/TV technician for help.

### This device complies with Part 15 of the FCC Rules.

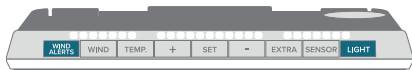
Operation is subject to the following two conditions:

- (1) This device may not cause harmful interference, and
- (2) This device must accept any interference received, including interference that may cause undesired operation.

**Caution:** Any changes or modifications not expressly approved by the party responsible for compliance could void the user's authority to operate the equipment.

## Factory Reset

---



If you are experiencing issues, press and hold the **WIND ALERTS** and **LIGHT** buttons down together until the display beeps. You do not need to remove the button cell battery to restart the station.

## Having Trouble? We're here to help.

---

For detailed product videos, manuals, and more, visit our support website:

[www.lacrossetechnology.com/intl](http://www.lacrossetechnology.com/intl)

Make sure you have your product's model number handy (**C78861-UK** / **C78861-EU**)