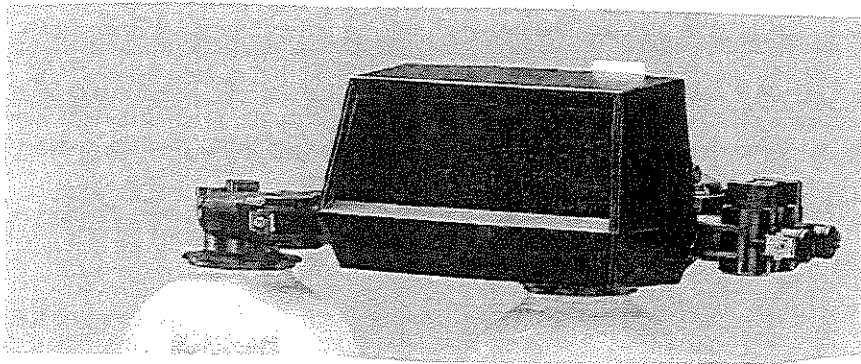


**WATER  
TENDER®**

**Quality Water Treatment Products**



---

**WTFTT Metered Alternating Series  
Residential Softeners**

---

**Installation and Operation Manual**

March 2015 Version

## Table of Contents

Model Number.....	1
Shipping Description / Unit.....	1
Softener Positioning .....	2
Softener Tank Loading.....	2
WTF Control Valve .....	2
Service and Drain Piping.....	2-3
Schematic.....	3
Electrical Supply.....	4
Brine Tank.....	4-5
Filling Softener with Water .....	5-6
WTF Control Valve Timer Settings .....	6-7
Final Check .....	7
Troubleshooting .....	8-10
WTF Valve Parts List and Schematics.....	11-19
Warranty .....	20

## Figures

1 – Installation Diagram .....	3
2 – Tubing Assembly Guide.....	5
3 – WTF Control Valve.....	6

**Installation and Operating Instructions for WTF**  
**Top Mount Softeners**

**Model #:**

- \_\_\_\_\_ WTF-320TT BY 32,000 grain alternating softener system
- \_\_\_\_\_ WTF320IHTT BY 32,000 grain alternating softener system
- \_\_\_\_\_ WTF-480TT BY 48,000 grain alternating softener system
- \_\_\_\_\_ WTF-640TT BY 64,000 grain alternating softener system

**Shipping Carton Description / unit:**

# of cartons	Contents	Description
1	Mineral tank	Distributor pipe installed
1	Brine tank	Brine tubing, brine well, brine shutoff valve, overflow fittings installed. <b>*NOTE:</b> WTF control shipped in brine tank.
1	WTF control valve	WTF control valve and bypass
	C-800	Pre-loaded @ factory

**Note: The 480 and 640 units have a Vortech Distributor.**

**Filter Media is Packaged as Follows:**

Model #	C-800 Cation Resin
WTF-320TT BY	1.0 CF*
WTF320IHTT BY	1.0 CF*
WTF-480TT BY	1.5 CF*
WTF-640TT BY	2.0 CF*

\*Already installed at the factory

**NOTE: THIS SOFTENER IS NOT INTENDED TO BE USED FOR TREATING WATER THAT IS MICROBIOLOGICALLY UNSAFE OR OF UNKNOWN QUALITY WITHOUT ADEQUATE DISINFECTION WHETHER BEFORE OR AFTER THE SYSTEM.**

### ***Water Softener Positioning:***

1. Place water softener in desired position, far enough from walls and other obstructions to allow for servicing the unit.
2. Place the water softener within reasonable access to a grounded 115V/60 HZ circuit and a legal drain line connection.

### ***Water Softener Tank Loading:***

1. Center the distributor and make sure it is resting on the bottom of the tank. The top of the distributor pipe should be **flush with the top of the tank** (this was prefitted at the factory).
2. Cover the top opening of the distributor pipe before filling the tank with media.

### ***WTF Control Valve:***

1. Turn the control valve upside down and ensure that the control valve distributor o'ring is in place. Use silicone lubricant on the o'ring.
2. Place the control valve onto the distributor pipe and into the tank opening.
3. Thread the control valve hand tight . Do not overtighten.
4. The control valve's drain connection is 1/2" npt and is located on the back right of the control valve.

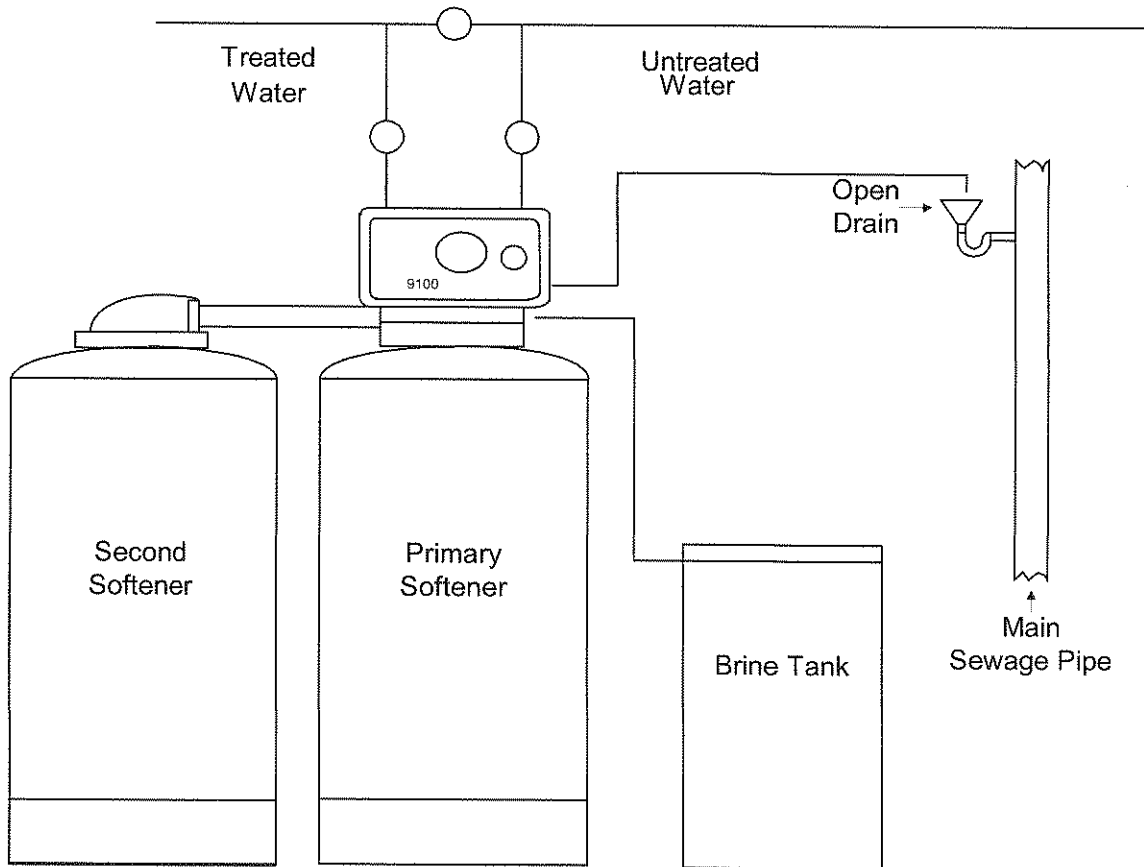
### ***Service and Drain Piping:***

1. Pipe softener system into the service lines (**Figure 1 on P. 2**) using quality ball valves and the 9100 stainless steel bypass valve. The inlet and outlet connections of the control valve are 1" and are located on the back of the valve body. Always follow local plumbing codes when installing the water treatment equipment.
2. Use unions on inlet, outlet, and drain line piping. If sweat fittings are used, be sure soldering is done in such a manner as not to allow heat to reach the valve. If Schedule 80 PVC is used, make sure to follow the proper primer and solvent instructions. **HEAT DAMAGE TO THE CONTROL VALVE VOIDS WARRANTY.**
3. The drain line connection must be of adequate size to allow for full regeneration flow.

- The control valve drain connection is already installed.
- Use only 5/8" poly tubing for drain line.
- **Do not overtighten or 9100 control valve may be damaged.**
- Maximum drain line length is 20 feet.
- Maximum drain line height is 8 feet above the control valve.
- The end of the drain line must be piped to an open, vented drain.
- Always follow local plumbing codes when piping drain lines to a waste pipe.

**UNDER NO CIRCUMSTANCES SHOULD THERE BE A DIRECT CONNECTION WITH SANITARY SEWAGE FACILITIES.**

Figure 1



### ***Electrical Requirements:***

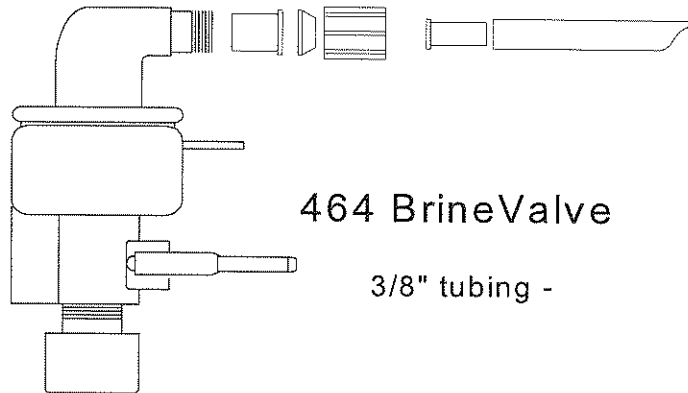
Always follow all local electrical codes when installing our water treatment equipment.

1. Provide a properly grounded 115V/60 HZ electrical outlet.
2. Maximum amperage required is 3 amps.
3. Make sure the electrical service provides power 24 hours per day. Avoid using outlets that are switch controlled.
4. Follow all local electrical codes when installing our water treatment equipment.

### ***Brine Tank:***

1. The brine tank should be located directly beside the water softener system mineral tanks.
2. Connect one end of the 3/8" OD poly tubing to the compression fitting on top of the brine shutoff valve located in the brine tank, and connect the other end to the compression fitting on the 9000 control valve.
3. The brine shutoff valve contains a float that controls the water level in the brine tank. The float height was preset at the factory.

Figure 2 – Tubing Assembly Guide



***Filling Water Softener with Water:***

1. Close inlet and outlet ball valves.
2. Turn Manual Regeneration Knob in a clockwise direction until you reach the Backwash position.
3. Open inlet ball valve 1/4 turn and allow water to fill tank slowly for approximately 10 minutes. After all air has been purged from tank, fully open inlet ball valve and allow water to run in this position for 15 minutes.
4. Turn the Manual Regeneration Knob in a clockwise direction until you reach the Rapid Rinse position. Allow the unit to stay in this position for approximately 10 minutes to purge the media fines to drain.

5. Plug the timer into the electrical outlet. The timer will automatically advance to the service position after completing the Rapid Rinse cycle. If water runs dirty to service, place unit in backwash position and allow the timer to go through a complete regeneration. The total regeneration will take approximately 2 hours. The unit will be in the service position after regeneration is complete.

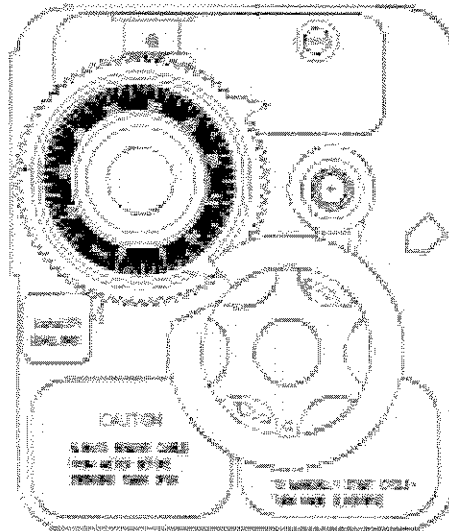
**9100 Control Valve Timer Settings:  
(Refer to Figure 2)**

Regeneration Timing Cycles are preset at the factory.

1. Backwash = 10 minutes
2. Brine/Slow Rinse = 50 minutes
3. Fast Rinse = 5 minutes

Note: reference "Specification Table" on previous page.

Figure 3





Setting the Gallon Wheel controls how often the softener system regenerates.

1. Use the formulas below to calculate gallons between regenerations.
  - a) Calculate Total Compensated Hardness (gpg):  
$$\text{Total Compensated Hardness (gpg)} = \text{Total Hardness (gpg)} + [3 \times \text{Iron (ppm)}]$$
  - b) Calculate Total Capacity (gallons):  
$$\text{Total Capacity (gallons)} = \text{Softener System Capacity (30,000 grains)} \div \text{Total Compensated Hardness (gpg)}$$
  - c) Calculate Total Gallons with Regeneration Adjustment:  
$$\text{Total Adjusted Capacity (gallons)} = \text{Total Capacity (gallons)} - \text{Regeneration Usage (100 gallons)}$$
  - d) Divide Total Adjusted Capacity by 100 to set the Gallon Wheel
2. Locate the Gallon Wheel on the timer. (See Figure 2 above.) The Gallon Wheel represents gallons of water (Total Adjusted Capacity) after dividing by 100. Therefore the maximum possible setting between regenerations is 5600 gallons.
3. Set the Gallon Wheel to the final answer in d) of the calculations above.

***Final Check:***

1. Make sure that the drain line connection meets all plumbing codes and that the drain line size can handle the backwash flow rate of the softener system.
2. Make sure the Inlet and Outlet ball valves are open and the Bypass ball valve is closed.
3. Make sure the 9000 control valve timer is plugged into an electrical outlet with power 24 hours per day.
4. Check all piping for leaks.
5. Check gallonage settings.
6. Check brine line connection at brine tank and 9000 control valve.

# Troubleshooting

## Symptom: Unit Fails to Regenerate

Cause	Solution
Faulty electrical supply	Verify that electrical power is getting to the outlet
Low inlet water pressure	Verify a minimum 20 psi inlet water pressure
Drain line is restricted	Insure that the drain line is free of blockage
Defective timer motor	Replace the timer motor
Plugged backwash flow control	Clean or replace the backwash flow control
All skipper pins are slid inward	Slide the desired number of pins outward
The injector is plugged	Clean the injector

## Symptom: Hard Water When Unit is in Service Position

Cause	Solution
The bypass valve is open or defective	Insure that the bypass valve is in the service position
No salt in the brine tank	Add solar salt to the brine tank
Not enough water in the brine tank	Verify that the 9000 timer is set for the proper amount of salt usage
Unit fails to draw brine (salt water)	See symptom: Unit fails to draw brine
Excessive water usage	Set the timer to regenerate more often
Loss of cation resin	See symptom: Loss of cation resin
Change in raw water hardness level	Test the raw water hardness level and adjust regeneration frequency
Leak at the distributor tube	Verify that the distributor is flush with the top of the tank

**Symptom: Unit uses too Much Salt**

<b>Cause</b>	<b>Solution</b>
Improper salt usage timer setting	Verify that salt usage setting on the back of the timer is set according to the Specification Reference Table
Excessive water in the brine tank	See symptom: Excessive water in Brine Tank

**Symptom: Loss of Cation Resin**

<b>Cause</b>	<b>Solution</b>
Backwash flow control is missing or is the incorrect size	Verify that the proper backwash flow control is installed
Air in the system	Verify that the well system is operating properly

**Symptom: Excessive Water in the Brine Tank**

<b>Cause</b>	<b>Solution</b>
Injector is plugged	Clean or replace the injector
Defective or damaged piston/spacers assembly	Replace the piston/spacers assembly
The brine float assembly seals on the 464 brine tank shutoff are dirty or worn	Replace the 464 brine float assembly
Salt setting at the back of the timer assembly is set incorrectly	Verify that the salt setting on the timer assembly corresponds with the reference table
Drain line is restricted	Insure that there are no restrictions in the drain line piping
Plugged backwash control	Clean the backwash flow control (BWFC)

**Symptom: Unit Fails to Draw Brine**

<b>Cause</b>	<b>Solution</b>
Injector is plugged	Clean or replace the injector
Loose suction line connection	Verify that all suction line connections are tight
Drain line is restricted	Insure that there are no restrictions in the drain line piping
Low inlet water pressure	Verify a minimum 20 psi inlet water pressure
Improper installation of distributor pipe	Verify that the distributor is flush with the top of the tank

**Symptom: Continuous Flow to Drain**

<b>Cause</b>	<b>Solution</b>
Defective or damaged piston/spacers assembly	Replace the piston/spacers assembly
Piston rod assembly is damaged	Replace piston rod assembly
Drive motor failure	Replace the drive motor

**Symptom: Loss of Water Pressure**

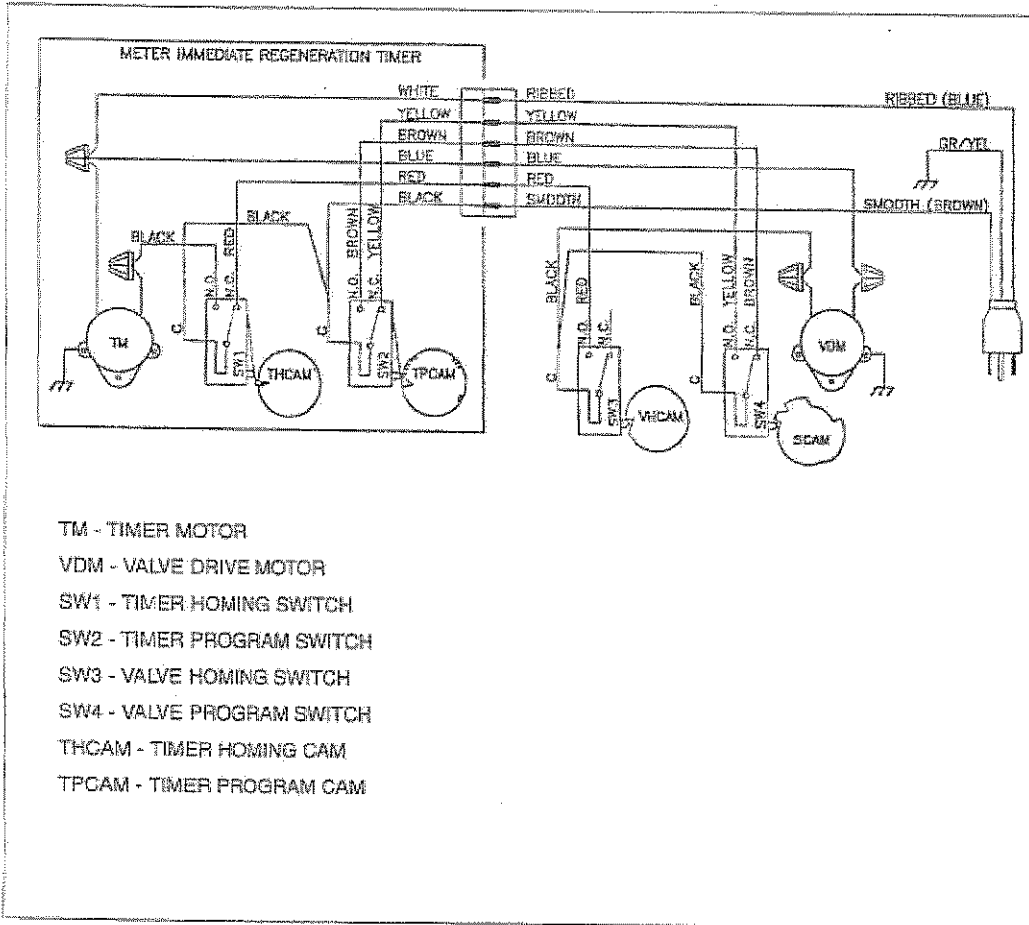
<b>Cause</b>	<b>Solution</b>
Dirt build-up in softener system tank	Clean or replace the Cation Resin
Dirt build-up in the inlet piping to the Water Softener system Unit	Clean or replace the inlet piping
Distributor pipe is plugged	Clean or replace the distributor pipe

**Symptom: Control Valve Cycles Continuously**

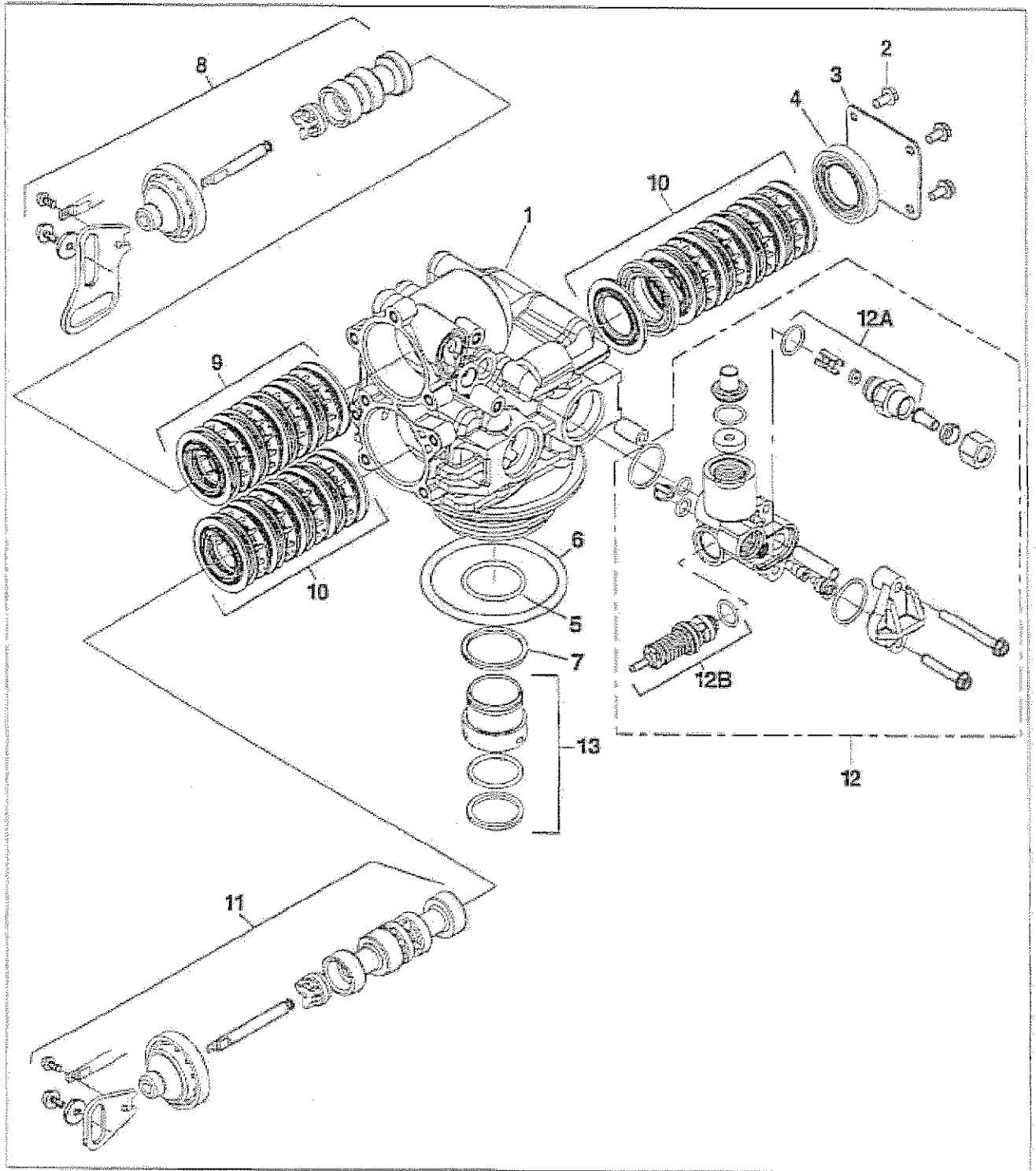
<b>Cause</b>	<b>Solution</b>
Defective timer assembly	Replace the timer assembly

# Model 9000/9100/9500

## Mechanical Timer Valve Wiring



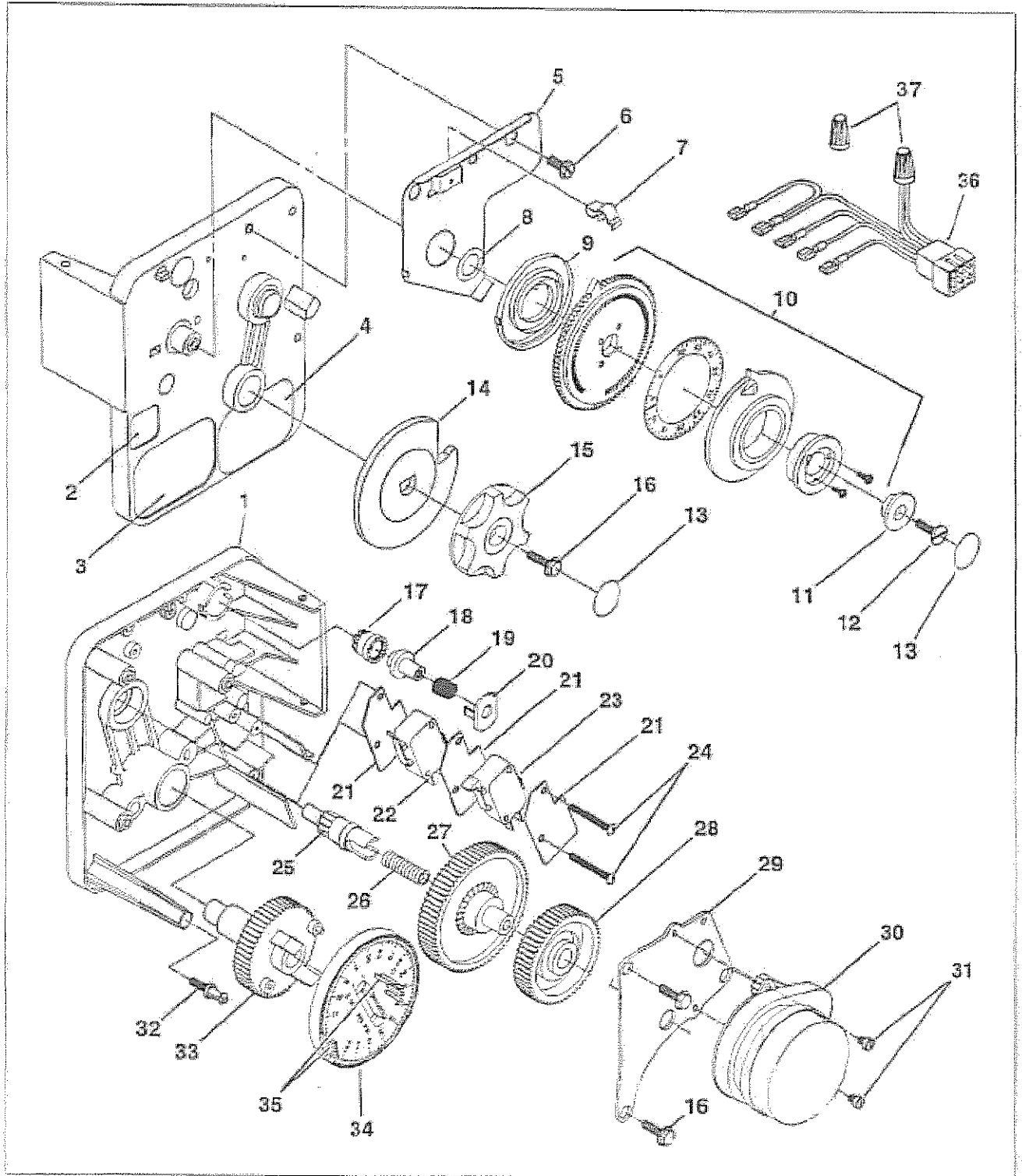
# 9100 Control Valve Assembly



## 9100 Control Valve Assembly

Item	Quantity	Part Number	Description																																																																		
1	1	40588	valve body assembly																																																																		
2	4	15137	screw, hex washer #10-24 x 3/8"																																																																		
3	1	14906	end plate																																																																		
4	1	14928	end plug																																																																		
5	1	19054	O-ring, 124																																																																		
6	1	18303	O-ring, 336																																																																		
7	1	40538	retainer, 32mm																																																																		
8	1	60400	piston top assembly																																																																		
9	1	60125	seal and spacer kit, top																																																																		
	1	60125-20	seal and spacer kit, top (559PE)																																																																		
10	1	60421	seal and spacer kit, bottom																																																																		
	1	60421-20	seal and spacer kit, bottom (559PE)																																																																		
11	1	60401	piston assembly, bottom																																																																		
12	1	60385-XXXX	injector assembly (see following chart for dash numbers)																																																																		
			<table border="1"> <thead> <tr> <th>injector</th> <th>number</th> <th>DLFC</th> <th>number</th> <th>BLFC</th> <th>number</th> </tr> </thead> <tbody> <tr> <td>red #0</td> <td>00</td> <td>Blank</td> <td>0</td> <td>Blank</td> <td>0</td> </tr> <tr> <td>white #1</td> <td>01</td> <td>1.2</td> <td>1</td> <td>0.25</td> <td>1</td> </tr> <tr> <td>blue #2</td> <td>02</td> <td>1.5</td> <td>2</td> <td>0.50</td> <td>2</td> </tr> <tr> <td>yellow #3</td> <td>03</td> <td>2.0</td> <td>3</td> <td>1.00</td> <td>3</td> </tr> <tr> <td>green #4</td> <td>04</td> <td>2.4</td> <td>4</td> <td></td> <td></td> </tr> <tr> <td></td> <td></td> <td>3.0</td> <td>5</td> <td></td> <td></td> </tr> <tr> <td></td> <td></td> <td>3.5</td> <td>6</td> <td></td> <td></td> </tr> <tr> <td></td> <td></td> <td>4.0</td> <td>7</td> <td></td> <td></td> </tr> <tr> <td></td> <td></td> <td>5.0</td> <td>8</td> <td></td> <td></td> </tr> <tr> <td></td> <td></td> <td>7.0</td> <td>9</td> <td></td> <td></td> </tr> </tbody> </table>	injector	number	DLFC	number	BLFC	number	red #0	00	Blank	0	Blank	0	white #1	01	1.2	1	0.25	1	blue #2	02	1.5	2	0.50	2	yellow #3	03	2.0	3	1.00	3	green #4	04	2.4	4					3.0	5					3.5	6					4.0	7					5.0	8					7.0	9		
injector	number	DLFC	number	BLFC	number																																																																
red #0	00	Blank	0	Blank	0																																																																
white #1	01	1.2	1	0.25	1																																																																
blue #2	02	1.5	2	0.50	2																																																																
yellow #3	03	2.0	3	1.00	3																																																																
green #4	04	2.4	4																																																																		
		3.0	5																																																																		
		3.5	6																																																																		
		4.0	7																																																																		
		5.0	8																																																																		
		7.0	9																																																																		
12A	1	60022-12	brine line flow control assembly, 0.125 gpm																																																																		
		60022-25	brine line flow control assembly, 0.250 gpm																																																																		
		60022-50	brine line flow control assembly, 0.500 gpm																																																																		
		60022-100	brine line flow control assembly, 1.00 gpm																																																																		
12B	1	60350	brine valve assembly																																																																		
13	1	61420	distributor adapter lct, 1.05"																																																																		
<i>Not Shown</i>																																																																					
14		12763	seal and space stuffer tool																																																																		
15		13061	spacer puller tool																																																																		
16		13759	DLFC retainer tool																																																																		

# 9000/9100/9500 Electro Mechanical Timer Assembly

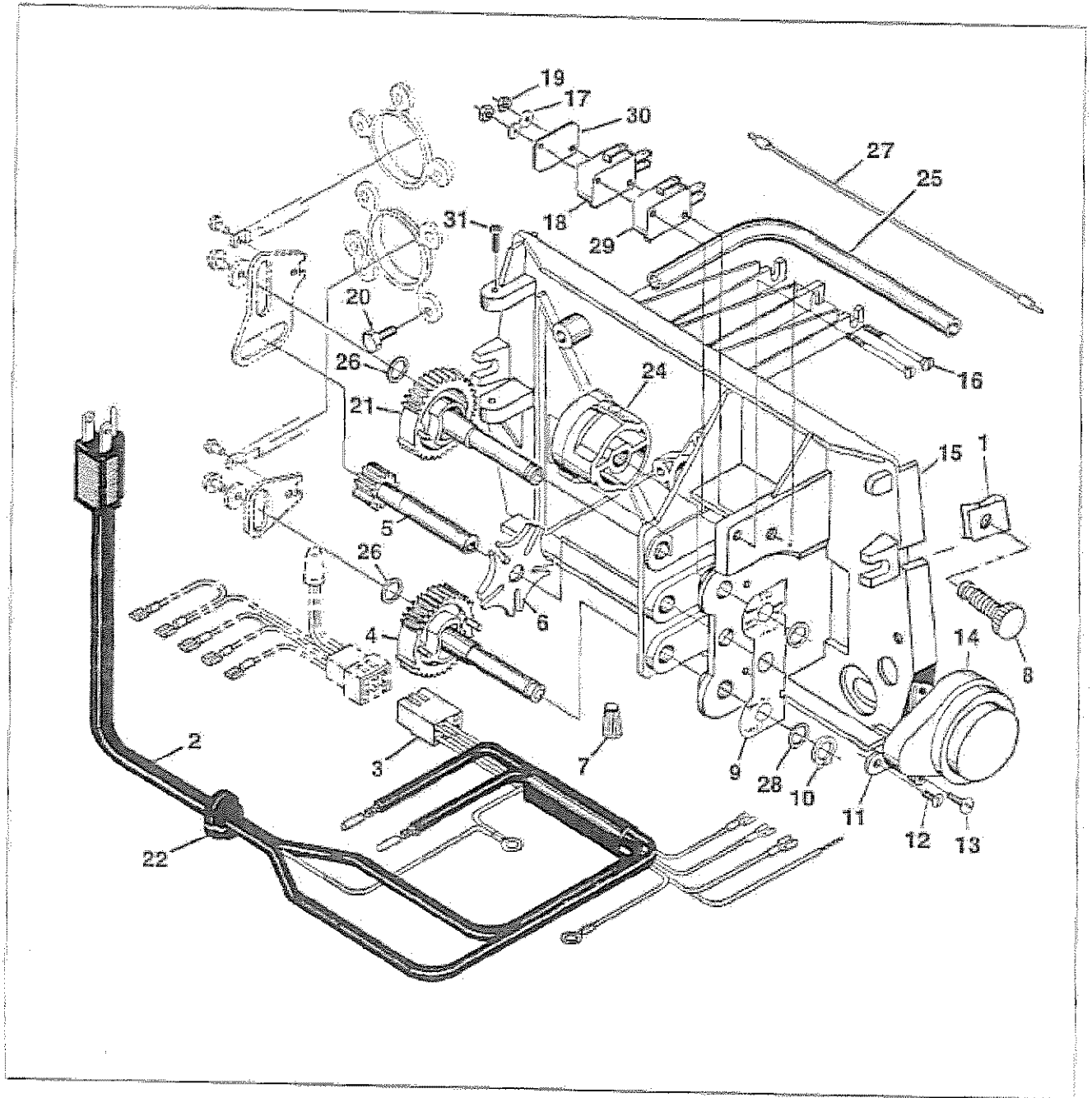




## *9000/9100/9500 Electro Mechanical Timer Assembly*

<i>Item</i>	<i>Quantity</i>	<i>Part Number</i>	<i>Description</i>
1	1	13870-03	timer housing assembly.
2	1	17870	label, capacity gallons
3	1	15465	label, Caution
4	1	15930	label, instruction
5	1	15227	actuator plate
6	1	10300	screw, hex washer #6
7	1	17513	spring clip
8	1	15407	washer, plain #4
9	1	15228	spring
10	1	16270-10	gallon wheel assembly 3/4" standard range meter
		16270-50	gallon wheel assembly 3/4" extended range meter
		16270-30	gallon wheel assembly 1" standard range meter
		16270-40	gallon wheel assembly 1" extended range meter
		16270-50	gallon wheel assembly 1-1/2" standard range meter
		16270-60	gallon wheel assembly 1-1/2" extended range meter
11	1	13606	program wheel retainer
12	1	13748	screw, flathead #6-20
13	2	11996	button decal
14	1	15223	cycle actuator gear
15	1	13886-01	knob
16	4	13296	screw, hex washer #6-20
17	1	17724	drive pinion
18	1	17723	drive pinion clutch
19	1	14276	spring, meter clutch
20	1	14253	retainer
21	3	14087	insulator
22	1	15314	switch
23	1	15320	switch
24	2	11413	screw, pan head #4-40
25	1	13018	idler shaft
26	1	15363	spring, idler shaft
27	1	13017	idler gear
28	1	13164	drive gear
29	1	13887	motor mounting plate
30	1	18743	motor, 120V 60 Hz.-1/30 RPM
		18824	motor, 220V 50 Hz.-1/30 RPM
		19170	motor, 120V 60 Hz.-1/15 RPM
		18825	motor, 220V 50 Hz.-1/15 RPM
31	2	13278	screw, #6-32
32	1	14265	spring clip
33	1	15055	main drive gear
34	1	19210-02	program wheel, 90 minute
		19210-05	program wheel, 180 minute
35	23	15499	roll pin
36	1	15203	harness
37	2	12681	wire nut
38	1	60320-02	auxiliary timer switch kit (not shown)

# 9000/9100/9500 Power Head

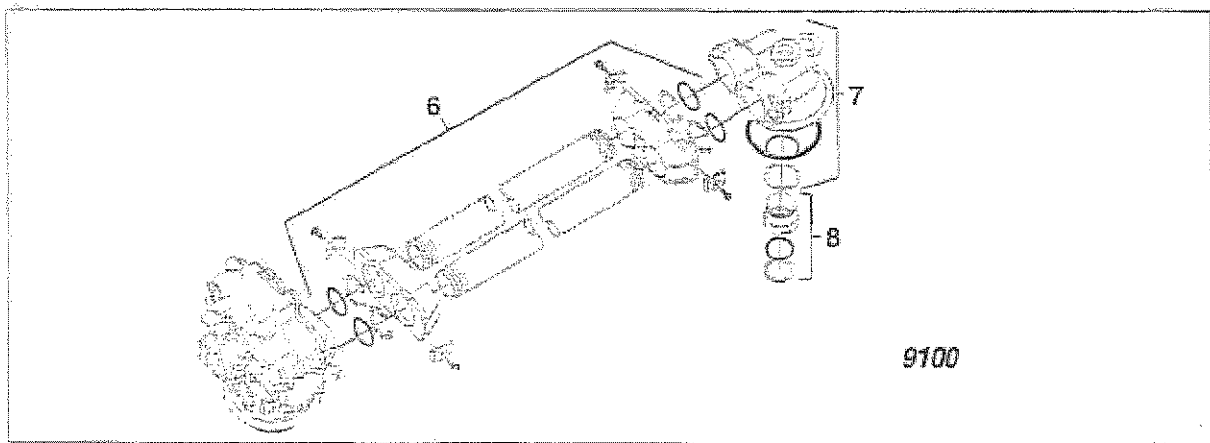


## 9000/9100/9500 Power Head

Item	Quantity	Part Number	Description
1	2	18728	nut, clip #8-32
2	1	11838	power cord, 6' U.S. 120V
		11839	power cord, 12' U.S. 120V
		40084-12	power cord, 12' U.S. 120V (ET)
		11545-01	power cord, 5' European 220V
		14678	power cord, 6' U.S. 220V
		19303-01	power cord, Australian B' 220V
		40085-12	power cord, 12' U.S. 220V (ET)
		19674	transformer, U.S., 110V to 24V
		25651	transformer, European, 220V to 24V
3	1	15202	wire harness, mechanical
		14822	wire harness auxiliary drive switch
		40041-06	wire harness, low voltage (ET)
4	1	15134	drive gear assembly, lower
5	1	15135	drive gear assembly
6	1	14896	geneva wheel
7	2	40422	wire connector
8	2	19367	cover screw
9	1	15175	position decal
10	2	14917	retaining ring
11	1	15199	ground plate
12	1	14430	screw, hex washer #6
13	2	19160	screw, motor mounting
14	1	18737	drive motor, 24V, 50/60 Hz (red wires)
	1	18738	drive motor, 120V, 60 Hz (black wires)
	1	18739	drive motor, 220V, 50 Hz (yellow wires)
15	1	15101	backplate, mechanical and SE
		17764-05	backplate, ET
		17764-06	backplate, ET
16	2	15172	screw, flat head #4-40
17	2	10340	washer, lock #4
18		10218	micro switch (homing)
19	1	10369	nut, (micro switch)
20	1	15331	screw, valve mounting
21	2	15138	drive gear assembly, upper
22	1	13547	strain relief
23	1	15810	retaining ring, drive gear
24	1	15132	triple cam (9000/9100)
		17331	triple cam (9500)
		17755	triple cam (9500 auxiliary switch)
25	1	15638	cable guide (9000/9100)
	1	17337	cable guide (9500)
26	2	15372	washer, thrust
27	1	15216	meter cable, 15.25", 1" meter, mechanical
		15425	meter cable, 13.25", 3/4" meter, mechanical
		17744	meter cable, 20.75", 1-1/2" meter, mechanical
		19121-01	meter cable, 1" meter, SE
		19121-05	meter cable, 3/4" and 1" meter, ET
		19791-01	meter cable, 1" meter, SE
28	2	15692	spacer
29	1	16433	micro switch (program)
30	1	10302	insulator
31	2	15173	screw
Not Shown			
32	1	60232-110	cover, black
	1	60232-112	cover, black - left window
33	1	60320-09	optional auxiliary drive switch (9000/9100)
	1	60320-10	optional auxiliary drive switch (9500)

## 9000/9100/9500 Second Tank Assemblies

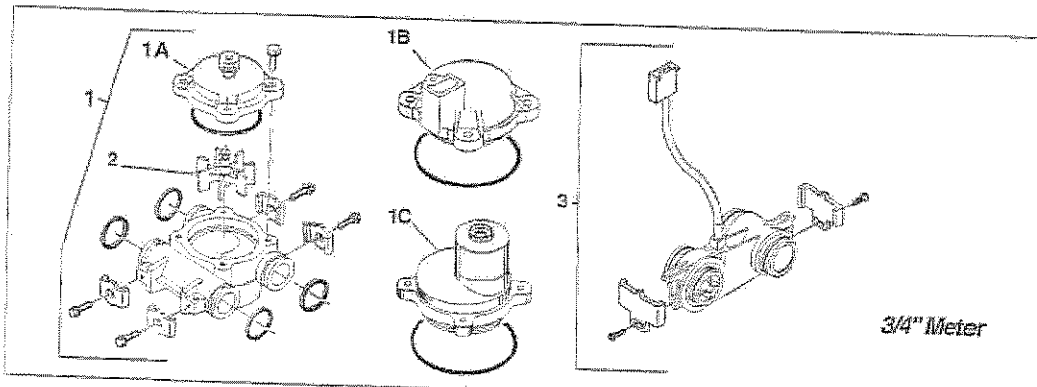
Item	Quantity	Part Number	Description
<i>9000 second tank assembly</i>			
1	4	14202	screw, hex head #8-32
2	4	13255	clip, hold-down
3	4	15078-01	coupling assembly, 9000
4	1	14864-01	second tank adapter assembly, 9000
		14864-01NP	second tank adapter assembly, 9000, nickel-plated
5	1	15823-06	yoke assembly 6" tanks, 6" tubes
		15823-06NP	yoke assembly 6" tanks, 6" tubes, nickel-plated
		15823-12	yoke assembly 12" tanks, 8-1/2" tubes
		15823-12NP	yoke assembly 12" tanks, 8-1/2" tubes, nickel-plated
		15823-14	yoke assembly 14" tanks, 10-1/2" tubes
		15823-14NP	yoke assembly 14" tanks, 10-1/2" tubes, nickel-plated
		15823-16	yoke assembly 16" tanks, 12-1/2" tubes
		15823-16NP	yoke assembly 16" tanks, 12-1/2" tubes, nickel-plated
<i>9100 second tank assembly</i>			
6	1	60421-12	plastic tube assembly, 9100, up to 12" tanks
		60421-16	plastic tube assembly, 9100, up to 16" tanks
7	1	14865	second tank adapter assembly, 9100
8	1	61420	distributors adapter kit, 9100, 1.05"
<i>9500 second tank assembly</i>			
9	1	16919-01	second tank adapter assembly, 9500
		16919-01NP	second tank adapter assembly, 9500, nickel-plated
		16919-21	second tank adapter assembly, 9500, DSP/Metric
		16919-21NP	second tank adapter assembly, 9500, DSP/Metric, nickel-plated
10	1	60715-16	tube assembly 16" tanks
		60715-16NP	tube assembly 16" tanks, nickel-plated
		60715-20	tube assembly 20" tanks
		60715-20NP	tube assembly 20" tanks, nickel-plated
		60715-24	tube assembly 24" tanks
		60715-24NP	tube assembly 24" tanks, nickel-plated



## 9000/9100/9500 Meter Assemblies

Item	Quantity	Part Number	Description
<i>5000 meter assembly</i>			
1	1	60086	3/4" meter assembly, standard range
		60086-5D	3/4" meter assembly, electronic (ET)
		60087	3/4" meter assembly, extended range
1A	1	14038	meter cap assembly, standard range
1B		14716	meter cap assembly, electronic (ET)
1C		15150	meter cap assembly, extended range
1D	1	15218	meter cap assembly, brass standard range
1E		15218NP	meter cap assembly, brass nickel-plated standard range
2	1	13509	impeller
		13509-01	impeller, hot water
3	1	19797	3/4" turbine meter assembly, less clips and screws
		60626	3/4" turbine meter assembly with clips, screws, meter cable
		60626-01	3/4" turbine meter assembly, with clips and screws
4	1	60389	1" meter assembly, standard range
		60389NP	1" meter assembly, standard range
	1	60389-2D	1" meter assembly, standard range, BSP
		60390	1" meter assembly, extended range
		60390NP	1" meter assembly, extended range, nickel-plated
		60390-2D	1" meter assembly, extended range, BSP
		60612	1" meter assembly, standard range, hot water
		6-622	1" meter assembly, electronic
4A	1	156785	1" adapter coupling
5	1	60610-01	1-1/2" meter assembly, standard range
		60610-01NP	1-1/2" meter assembly, standard range, nickel-plated
		60610-02	1-1/2" meter assembly, extended range
		60610-02NP	1-1/2" meter assembly, extended range, nickel-plated
		60610-21	1-1/2" meter assembly, standard range, BSP
		60610-21NP	1-1/2" meter assembly, standard range, BSP, nickel-plated
		60610-22	1-1/2" meter assembly, extended range, BSP
		60610-22NP	1-1/2" meter assembly, extended range, BSP, nickel-plated
		60611-01	1-1/2" meter assembly, standard range, with 1" sleeve
		60611-01NP	1-1/2" meter assembly, standard range, with 1" sleeve, nickel-plated
		60611-02	1-1/2" meter assembly, extended range, with 1" sleeve
		60611-02NP	1-1/2" meter assembly, extended range, with 1" sleeve, nickel-plated
<i>Not Shown</i>			
6"		17790	1-1/2" meter sleeve reduced to 1"
7		60460	meter checker kit, standard range
8		60461	meter checker kit, extended range

## 9000/9100/9500 Meter Assemblies





Quality Water Treatment Products

QUALITY WATER TREATMENT SYSTEMS

**LIMITED WARRANTY**

This LIMITED WARRANTY applies to original purchasers of water conditioners and filters ("Unit" or "Units") distributed by the Milby Company. The Units are made from the finest materials available and are warranted for the periods shown below so long as the Units are operated in conformity with the specified Physical Properties and only in residential applications.

Any component part of a purchased Unit identified in the attached Warranty Registration Card by model and serial number that is installed by a licensed contractor according to the applicable installation manual and local plumbing and electrical codes will be repaired or replaced, at Milby's option, if a failure occurs due to defective material or workmanship. Any accident to the Unit, misuse, abuse or alteration of the Unit, or any unauthorized attempt to repair the Unit will void this warranty. Modifications or repairs by anyone other than an authorized Milby dealer are not covered by this warranty.

PHYSICAL PROPERTIES		COMPONENT PART	WARRANTY PERIOD
Max. Pressure	75 PSI	Media Tank	10 yrs. From Date of Purchase
Max. Temperature	100 Degrees Fahrenheit	Salt Storage Tank	5 yrs From Date of Purchase
Min. Temperature	32 Degrees Fahrenheit	Control Valve	3 yrs From Date of Purchase
		Media Performance due to misapplication, faulty installation, or clogging	None

Under this warranty, Milby will only repair or replace a Unit or component part with an identical or similar Unit or component part distributed by Milby. A replacement Unit or component part shall be warranted only for the remainder of the warranty period of the original purchased Unit or part. The purchaser is responsible for all other costs, including, but not limited to (1) labor charges for service, removal, repair or reinstallation of the Unit or component part, (2) shipping, delivery, handling and administrative charges for necessary or incidental costs for any materials required for installation of the replacement Unit or component parts.

THERE ARE NO WARRANTIES, EXPRESSED OR IMPLIED, INCLUDING THE IMPLIED WARRANTIES FOR MERCHANTABILITY OR FITNESS FOR A PARTICULAR PURPOSE WHATSOEVER WITH RESPECT TO THE INSTALLATION, OPERATION, REPAIR OR REPLACEMENT OF A UNIT AND/OR ITS COMPONENT PARTS THAT EXTEND BEYOND THE APPLICABLE LIMITED WARRANTY HEREIN. SOME STATES DO NOT ALLOW LIMITATIONS ON HOW AN IMPLIED WARRANTY LASTS, SO THE ABOVE LIMITATION MAY NOT APPLY TO YOU.

UNDER NO CIRCUMSTANCES SHALL MILBY BE LIABLE TO THE PURCHASER OR ANY OTHER PERSON FOR WATER DAMAGE, LOSS OF USE OF THE UNIT, INCONVENIENCE, LOSS OR DAMAGE TO PERSONAL PROPERTY, OR ANY OTHER SPECIAL OR CONSEQUENTIAL DAMAGES, WHETHER ARISING OUT OF BREACH OF WARRANTY, BREACH OF CONTRACT, TORT, OR OTHERWISE. SOME STATES DO NOT ALLOW THE EXCLUSION OR LIMITATION OF INCIDENTAL OR CONSEQUENTIAL DAMAGES, SO THE ABOVE LIMITATION OR EXCLUSION MAY NOT APPLY TO YOU.

THIS WARRANTY GIVES YOU SPECIFIC LEGAL RIGHTS, AND YOU MAY ALSO HAVE OTHER RIGHTS WHICH VARY FROM STATE TO STATE.

To obtain coverage under this warranty, the consumer must complete and return the attached Warranty Registration Card within thirty (30) days from the date of purchase to Milby at: Attn: Customer Service, Milby Company, 6201 South Hanover Road, Elkridge, Maryland 21075-5651. Any claim under this warranty should be initiated with the dealer who sold the Unit to the purchaser. If this is not practicable, the purchaser should contact Milby directly at 410-796-7700.

```

*****
# WARRANTY REGISTRATION CARD
# Purchaser Name:
# and Address
# Model # _____ Date of Purchase: _____
# Dealer Name:
# and Address
*****

```

**MILBY COMPANY**  
6201 South Hanover Road  
Elkridge, MD 21075-5651

Phone: 410- 796-7700  
Fax: 410- 796-7739