

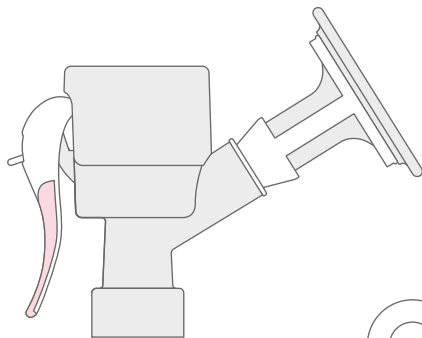


Get started Love



Scan for video instructions
or visit limerickinc.com
*click on support

What's in the box?



Pump assembly



Container cap



Storage container



Cap insert

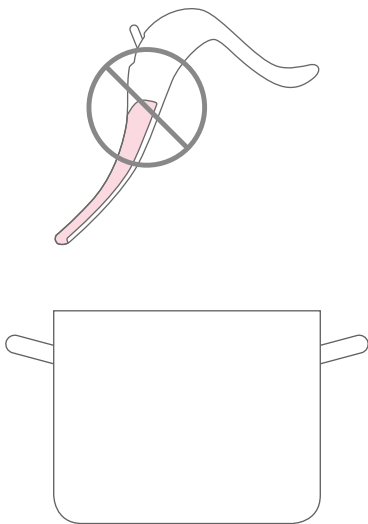


Gasket



Pump stand

1

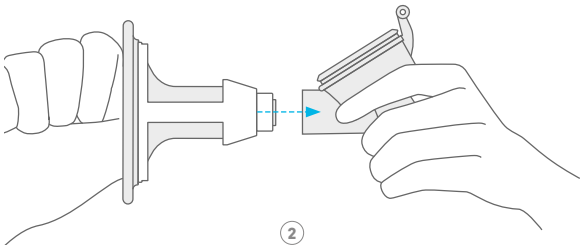
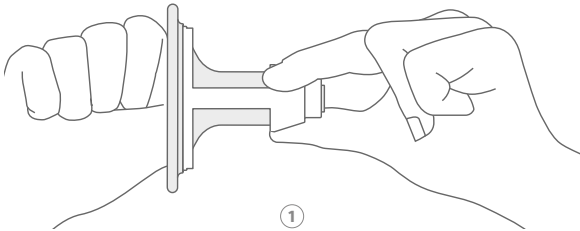


Sanitize

Put all of the parts—except the pump handle—into a large kitchen pot filled with water.

Bring to a boil for between two and five minutes. Using a pair of tongs, pull out the parts and place them on a clean paper or cloth towel.

2

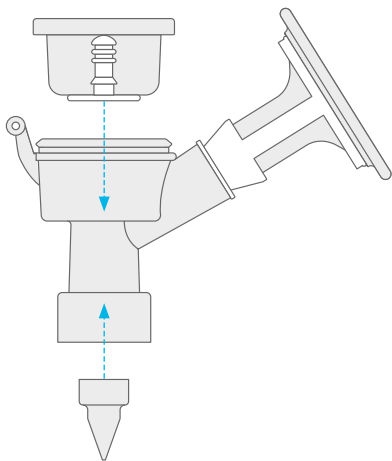


The breast cup assembly & the pump body

1. Insert the silicone breast cup into the breast cup brace until the end of the breast cup extends out of the back of the brace.
2. Attach the breast cup and breast cup brace to the body of the pump as shown.

3

① Diaphragm

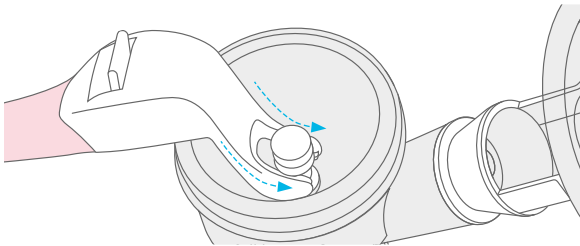


② Duck valve

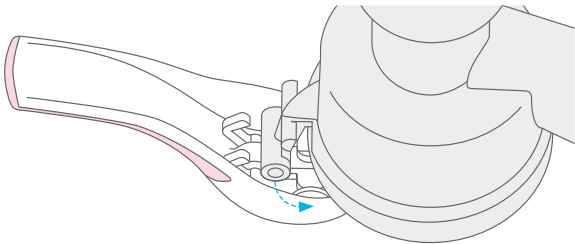
The duck valve & the diaphragm

1. Place the diaphragm in the top of the body of the pump, and press down along rim to create a tight seal.
2. Push the duck valve into the bottom end of the pump body.

4



①



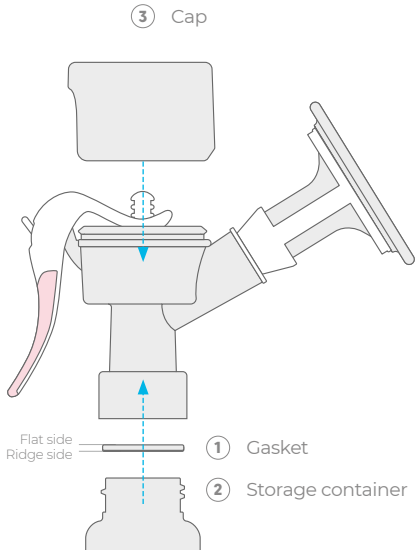
②

Attaching the handle

The handle attaches to the body of the pump in two places.

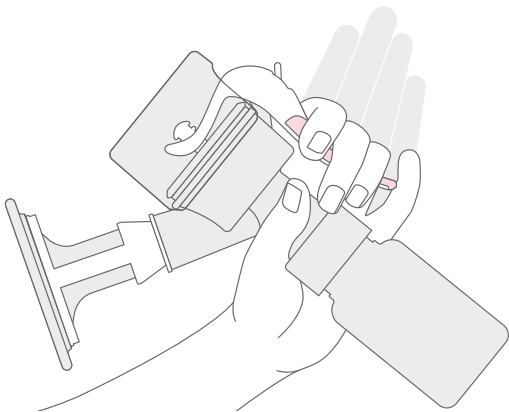
1. Place the “U” shape under last notch on stem in diaphragm, and snap in place.
2. Turn the pump assembly upside down, snap handle onto “T” bar on body, and lock in place.

5



The storage container & the cap

1. Push gasket into the bottom of the body of the pump with ridge side facing down. Press firmly in place.
2. Screw storage container into the body of the pump.
3. Snap cap onto the pump body with large opening facing the handle.



Using your Love pump

Center the nipple in the breast cup.

Begin pumping by squeezing the handle halfway and rapidly, several times.

Once the milk starts flowing, slow down your speed, and squeeze the handle fully or to your comfort level—pumping usually takes 10 to 15 minutes per side.

When your pumping session is complete, unscrew the storage container from the pump body and screw on the cap.



①



②



③

Wash after each use

1. Rinse with cool water to remove milk residue.
2. Wash all the parts in hot soapy water. Breast cups are dishwasher safe. However, we recommend washing by hand or using the steam sanitizing bags to avoid soap residue from the dishwasher.
3. Rinse in hot water and place parts on a clean towel to air dry.

Thanks for choosing us



limerickinc.com

info@limerickinc.com

818.566.3060



Do not share these parts.

Caution

Limerick breast pumps operate differently than all other pumps on the market—use only Limerick brand accessories to ensure that your pump will work properly.

© Limerick Inc.