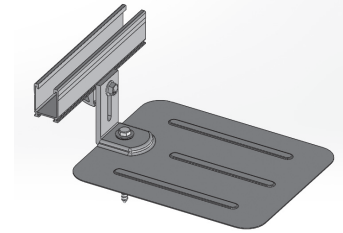
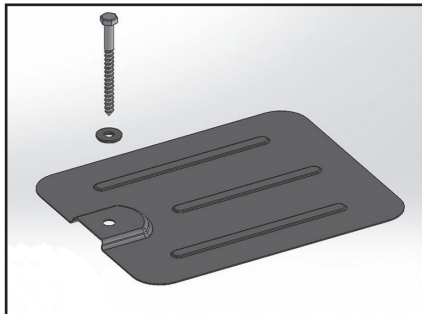


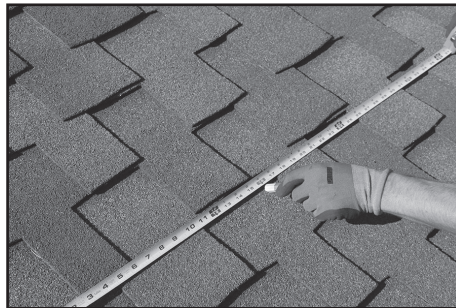
# Flashing Instructions



## Composition Shingle Flashing for the L-Foot Mount



**Parts List:**  
 8 Flashings  
 8 Lag Bolts - 5/16 x 4 inches  
 8 Sealing Washers



Locate roof attachment points directly over the center of the rafter and 1-1/2-inches below the shingle above the hole.



Drill a 7/32" pilot hole for the lag bolt. Drill through the roofing material and into the framing member.



Apply a good quality flashing sealant in and around the pilot hole.



Slide flashing under the shingle course above the pilot hole. Position hole in flashing directly over the pilot hole. Use a pry bar to lift up shingles if necessary.



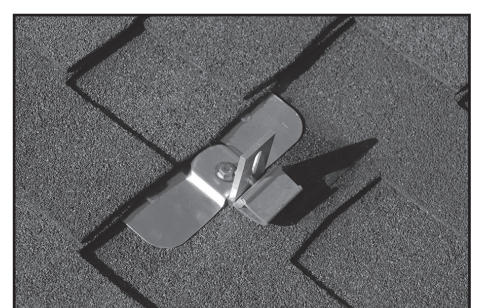
Apply sealant to the bottom of the Tamarack L-foot mount.



Place L-foot base under the hole in the flashing so that the hole in the L-foot lines up with the hole in the flashing, directly over the pilot hole.



Insert the lag bolt through the sealing washer with the rubber side down and drive the bolt into the hole.



Tighten the lag bolt so the sealing washer is tight against the flashing.