

Elemental Edges

Wall Base Transitions Stair Systems Architectural Wall Base

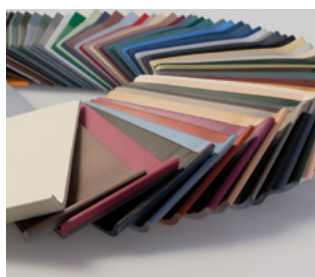


Elemental Edges FINISHING ACCESSORIES



At Mohawk Group we believe in providing project solutions that are easy to select and readily available. Elemental Edges is a complete portfolio of free-to-ship accessories for all your flooring installation and finishing needs. The program is offered in 14 QuickShip colors that coordinate perfectly with our full suite of soft and hard surface products.

Explore more by visiting mohawkgroup.com/products/elemental-edges



Wall Base



Seamlessly coordinate your wall base and Mohawk Group floor covering from our variety of QuickShip wall base offerings.

AVAILABLE IN

- Rubber
- Vinyl
- 4" or 6" in height
- Coved or straight
- 4' lengths or 96' & 120' rolls
- 1/8" gauge
- .080" gauge (4" Cove vinyl)



Installation Accessories



Add a functional finishing touch to your coordinated color scheme with Mohawk Group installation accessories. Proprietary Rubber formulations are shrink and crack-proof, and won't fade, even in direct sunlight.

CHOOSE FROM

- Universal Transitions
- Reducers
- Adaptors
- Cove Stick



Stair Solutions



Specify 12.5" regular tread or 20" integrated tread/riser, available in 48" and 72" lengths. Round and hammered finishes are available with standard square nose. All profiles are available with or without visually impaired strips.

CHOOSE FROM

- Stair Treads
- Resilient Landing Tiles
- Risers
- Nosings



Architectural Wall Base

Complement your space with the rich detail of Elemental Edges Architectural Wall Base, offered in a variety of designs, sizes and running line colors. Superior performance and durability allowing your project finishes to remain remarkable.

AVAILABLE IN

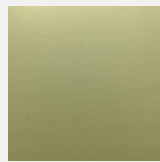
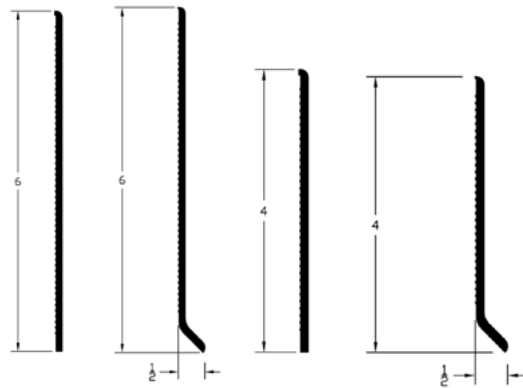
- 8 design profiles
- 14 color-coordinated options



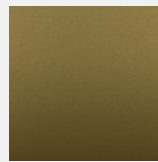


Wall Base

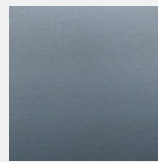
Seamlessly coordinate your wall base and Mohawk Group floor covering from our variety of QuickShip wall base offerings. Available in premium Rubber or Vinyl material, Straight or Coved profile, and Rolls (Coils) or Lengths (Sticks).



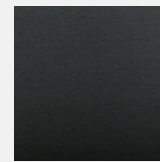
Illuminated Gold
127



Antique Gold
861



Platinum
937



Onyx
969

These additional four metallic colors available in 4" Rubber Cove Wall Base only. See pages 14-15 for full color options.





HOW TO ORDER:

CRW XX - XXX - 4WB/6WB

↑ ↑ ↑
SKU COLOR SIZE

HOW TO ORDER:

CVW XX - XXX - 4WB/6WB

↑ ↑ ↑
SKU COLOR SIZE

PRODUCT	GAUGE	SIZE	STRAIGHT SKU	COVE SKU
Rubber	1/8"	4" x 120' rolls	CRW01	CRW03
		6" x 96' rolls	CRW01	CRW03
		4" x 48" lengths	CRW02	CRW05
		6" x 48" lengths	CRW02	CRW05
Vinyl	1/8"	4" x 120' rolls	CVW01	CVW03
		6" x 96' rolls	CVW01	CVW03
		4" x 48" lengths	CVW02	CVW04
		6" x 48" lengths	CVW02	CVW04
Vinyl	.080"	4" x 48" lengths	N/A	CVW05



Accessories

Add a functional finishing touch to your coordinated color scheme with Mohawk Group Installation Accessories.

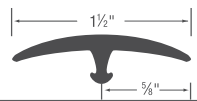
- Seamless transition from one flooring thickness to another
- Proprietary Rubber formulations
- Shrink-proof, crack-proof, and won't fade - even in direct sunlight.

UNIVERSAL TRANSITIONS FINISH MATERIAL TO FINISH MATERIAL



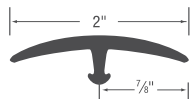
CRA01

Snap-Down T-Moulding 1 1/8"
20 pieces/carton, Length: 12'



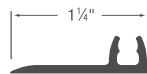
CRA02

Snap-Down T-Moulding 1 1/2"
20 pieces/carton, Length: 12'



CRA03

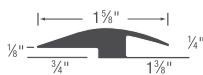
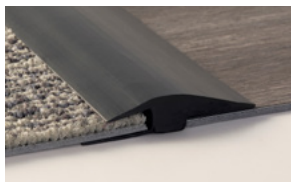
Snap-Down T-Moulding Low Profile 2"
20 pieces/carton, Length: 12'



CRA04

Pinless Metal Track (aluminum finish, no color)
20 pieces/carton, Length: 12'

ADAPTORS FINISH MATERIAL TO FINISH MATERIAL



CRA05

1/8" Resilient to Carpet Joiner
20 pieces/carton, Length: 12'

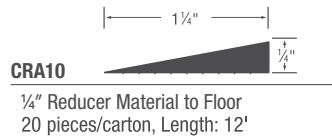
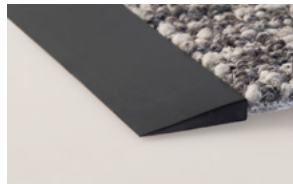
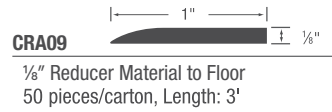
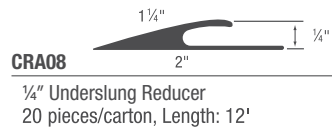
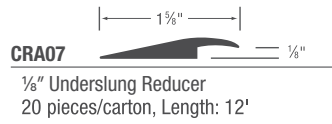
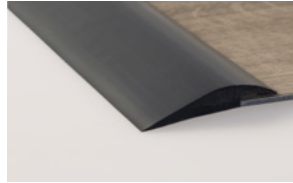


CRA06

1/8" Tile-Carpet Joiner
20 pieces/carton, Length: 12'

REDUCERS

FINISH MATERIAL TO FLOOR

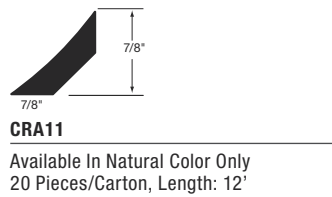


HOW TO ORDER:

CRA XX - XXX

↑ ↑
SKU COLOR

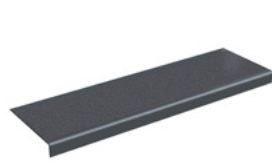
COVE STICK



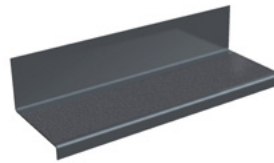


Round Tread & Riser with Visual Strip, Round Tread & Riser, Landing Tile 002 Night Skies

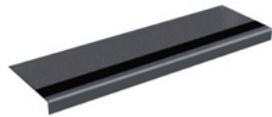
Hammered Stair Treads



CRS01
Regular Stair Treads



CRS02
Stair Treads with Riser



CRS03
Stair Treads with Visual Strip



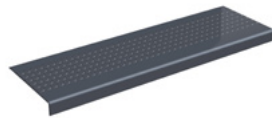
CRS04
Stair Treads with Riser and Visual Strip

HOW TO ORDER:

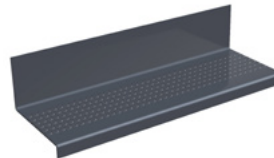
CRS XX - XXX - XX



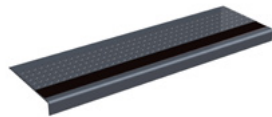
Round Stair Treads



CRS05
Regular Stair Treads



CRS06
Stair Treads with Riser

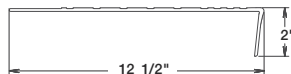


CRS07
Stair Treads for the Visually Impaired

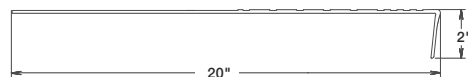


CRS08
Stair Treads with Riser for the Visually Impaired

Regular Stair Treads



Stair Treads with Riser

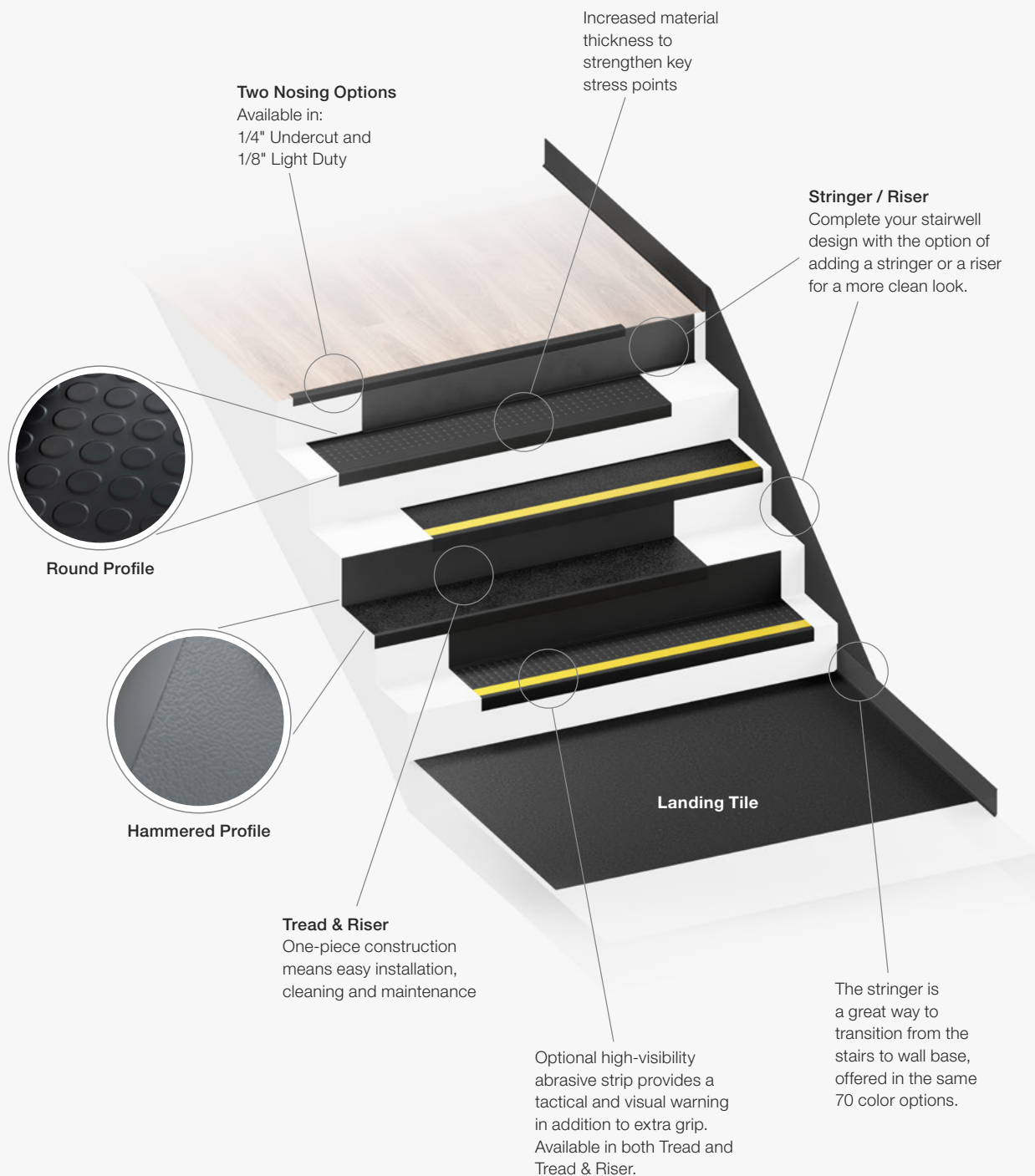


NOTE: Available in either 48" or 72" lengths.

Black visually impaired strip available on all stair tread colors, except 002 Night Skies which is available with yellow.



Rubber Stair Treads

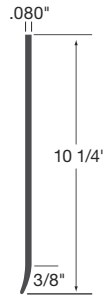


Stairwell Finishes

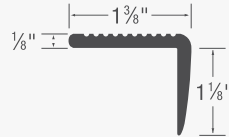
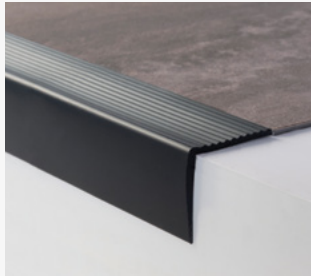
The Stringer/Riser combo is a 24' x 10 1/4" piece that can be used as either a Stringer on a wall transitioning to your wall base or a Riser to pair with Treads. Both applications can be achieved by trimming the material to fit your unique design.

HOW TO ORDER:

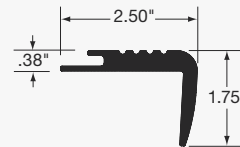
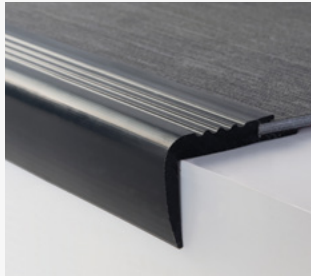
CRS XX - XXX



CRS09
24' X 10 1/4" with
3/8" toe X 0.080"



CRS11
1/8" LIGHT DUTY NOSING



CRS12
1/4" UNDERCUT NOSING

Landing Tiles

HOW TO ORDER:

CRS10 - XXX



Product Type: CRS10
Composition: Homogeneous Solid Vinyl
Size: 18" x 18"
Thickness: 1/8" (3 mm)
Installation: Glue Down



PERFORMANCE
Superior durability on high-traffic stairways. No wear layer, solid color all the way through.



COLOR MATCH
Elemental Edges' Landing Tiles coordinate beautifully with Stair Treads and our full suite of Elemental Edges Accessories.



MADE IN THE USA
Landing Tiles are made in the USA, offering industry-leading serviceability and supporting our local economies.



Architectural Wall Base

Elemental Edges Architectural Wall Base is an easy-to-order, sustainable solution to traditional millwork. The wide variety of design options, sizes, and running line colors allow you to easily coordinate your project finishes with your Mohawk Group flooring selections.

- Base conforms to wall curves and masks irregular wall surfaces
- Program delivers exceptional scratch, puncture and stain resistance
- 8 design profiles allow for customization and added detailing
- Color-coordinated options match accessories & rubber stair solutions
- Superior durability without splintering offers easier maintenance over wood
- Simplified installation with standard wall base adhesive keeps projects worry-free



HOW TO ORDER:

AWB XX - XX - XXX



Straight Cut
AWB01

Available:
3", 4" & 4.5"



Crisp Edge
AWB02

Available:
4", 4.5" & 6"



Sculpted Edge
AWB03

Available:
4.5" & 6"



Tapered Wavet
AWB04

Available:
4.5" & 5.5"



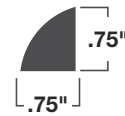
Module
AWB05



Edge Lap
AWB06



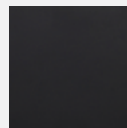
Tilted Edge
AWB08



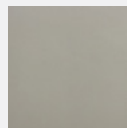
Quarter Round
AWB09

RUNNING LINE COLORS

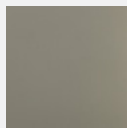
MADE TO ORDER | Minimum Order Quantity Required



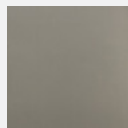
Night Skies
002



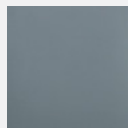
Dove
053



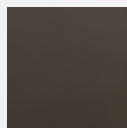
Buff
063



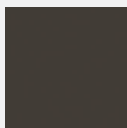
Aircraft Carrier
073



Gunmetal
083



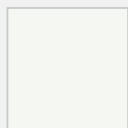
Deep Chestnut
084



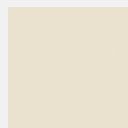
Black Brown
099



Navy
566



White
717



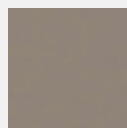
Cream
731



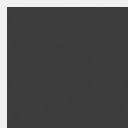
Greige
846



Khaki
852



Smoke
955



Charcoal
958

ADDITIONAL COLORS AVAILABLE | Minimum Order Quantities Required



QUICKSHIP COLORWAYS



Colorways





Minimum order quantity required for non-Quickship colors.



Specifications

Elemental Edges

Wall Base

DESIGN

Product Type	Rubber		
Gauge	1/8"	Straight SKU	Cove SKU
Size	4" x 120' rolls	CRW01	CRW03
	6" x 96' rolls	CRW01	CRW03
	4" x 48" lengths	CRW02	CRW05
	6" x 48" lengths	CRW02	CRW05
Product Type	Vinyl		
Gauge	1/8"	Straight SKU	Cove SKU
Size	4" x 120' rolls	CVW01	CVW03
	6" x 96' rolls	CVW01	CVW03
	4" x 48" lengths	CVW02	CVW04
	6" x 48" lengths	CVW02	CVW04
Product Type	Vinyl		
Gauge	.080"	Cove SKU	
Size	4" x 48" lengths	CVW05	
Colors Available	74		
Quickship	14		

PERFORMANCE

Composition	Rubber	Proprietary TP Rubber formulation including, pigments, stabilizers and other functional fillers
	Vinyl	Proprietary vinyl formulation including, pigments, stabilizers and other functional fillers
Critical Radiant Flux		ASTM E648- Class I (> 0.45 W/cm2)
Fire Resistance		ASTM E84- Class II (26-75)
Flame Propagation		UL 992- < 2.0
Resilient Wall Base Standard		ASTM F1861- Conforms

SUSTAINABILITY

Certification	FloorScore® Certified
Country of Origin	USA

SERVICE

Warranties	Limited 10 Year Warranty
------------	--------------------------

For detailed warranty, installation and adhesive information visit mohawkgroup.com

Mohawk Group warrants its adhesives for the life of the original installation only when a Mohawk Group style (product) is installed. Mohawk's floor preparation procedures must be followed to ensure that the substrate has been prepared properly. Failure to use Mohawk Group adhesives or to follow Mohawk's floor preparation procedures will void all lifetime adhesive warranties. Please contact your local Sales Representative for installation guidelines.

These patterns contain inherent characteristics which may result in pattern run off and/or pattern appearance variations at the seams or tile edges (darker or lighter pattern lines). These characteristics are inherent in the patterns and are not manufacturing defects. Consideration to these characteristics should be given when selecting an installation method.

Chair pads are recommended under office chairs with roller casters to preserve appearance retention, act as a deterrent toward delamination and to prevent premature or accelerated wear. Walk-off tiles from the Tuff Stuff II Collection are recommended at entryways to reduce soiling.

Mohawk Group is providing this architect folder for the purpose of promoting our commercial business. This folder and its samples shall remain the property of Mohawk Group. Color may vary from dye lot to dye lot. Substitution of material may be made due to improved technology, supply limitations or other factors. The performance of this product is not affected by such variations.

For current and complete specifications please visit www.mohawkgroup.com



Specifications

Elemental Edges Accessories

DESIGN

Accessories

Universal Transitions
Adaptors
Reducers
Cove Stick

SKU

CRA01 | CRA02 | CRA03 | CRA04
CRA05 | CRA06
CRA07 | CRA08 | CRA09 | CRA10
CRA11

Product Type
Gauge
Size
Colors Available

Rubber
Varies
Varies
14

PERFORMANCE

Composition	Proprietary TP Rubber formulation including pigments, stabilizers and other functional fillers
Critical Radiant Flux	ASTM E648- Class I (>0.45 W/cm ²)
Fire Resistant	ASTM E 84 - Class II (26-75)
Flame Propagation	UL 992 - < 2.0
Smoke Density	ASTM E 662 - < 450
Slip Resistance	ASTM D 2047 - >=0.5 SCOF
Resistance to Chemicals	ASTM F 925 - Passes
Hardness	ASTM D 2240 - 83 +/- 3 Shore A

SUSTAINABILITY

Certification	FloorScore® Certified
Country of Origin	USA

SERVICE

Warranties	Limited 10 Year Warranty
------------	--------------------------

For detailed warranty, installation and adhesive information visit mohawkgroup.com

Mohawk Group warrants its adhesives for the life of the original installation only when a Mohawk Group style (product) is installed. Mohawk's floor preparation procedures must be followed to ensure that the substrate has been prepared properly. Failure to use Mohawk Group adhesives or to follow Mohawk's floor preparation procedures will void all lifetime adhesive warranties. Please contact your local Sales Representative for installation guidelines.

These patterns contain inherent characteristics which may result in pattern run off and/or pattern appearance variations at the seams or tile edges (darker or lighter pattern lines). These characteristics are inherent in the patterns and are not manufacturing defects. Consideration to these characteristics should be given when selecting an installation method.

Chair pads are recommended under office chairs with roller casters to preserve appearance retention, act as a deterrent toward delamination and to prevent premature or accelerated wear. Walk-off tiles from the Tuff Stuff II Collection are recommended at entryways to reduce soiling.

Mohawk Group is providing this architect folder for the purpose of promoting our commercial business. This folder and its samples shall remain the property of Mohawk Group. Color may vary from dye lot to dye lot. Substitution of material may be made due to improved technology, supply limitations or other factors. The performance of this product is not affected by such variations.

For current and complete specifications please visit www.mohawkgroup.com

recover
carpet recycling program
877-3RE-CYCL





Specifications

Elemental Edges Stair Treads

DESIGN

Size	
Treads	Length: 48" (1.219m) / 72" (1.829m) Width: 12.5" (317.5mm) Nosing Depth: 2" (50.8mm) ADA compliant Nosing Radius: 1/4" (6mm) ADA compliant
Treads with Risers	Length: 48" (1.219m) / 72" (1.829m) Width: 20" (508mm) Nosing Depth: 2" (50.8mm) ADA compliant Nosing Radius: 1/4" (6mm) ADA compliant
Overall Gauge	.125" (1/8")
Colors Available	
Quickship	14
Made to Order	56

PERFORMANCE

Classification	ASTM F2169 Resilient Stair Treads Type TP, Class 2 Group 1 & 2 (Visually Impaired Safety Strip)
Resistance to Chemicals	ASTM F925 - Passes, No More Than Slight Changes
Resistance to Light	ASTM F1515 - Passes, $\Delta E = 4.2$
Resistance to Heat	ASTM F1514 - Passes, $\Delta E = 4.8$
Critical Radiant Flux	ASTM E648 - > 0.45
Smoke Density	ASTM E662 - < 450
Slip Resistance	ASTM D2047 SCOF ≥ 0.64
Hardness	ASTM D2240 95 Shore A

SUSTAINABILITY

Certification	FloorScore® Certified
Country of Origin	USA

SERVICE

Warranties	Limited 10 Year Warranty
------------	--------------------------

For detailed warranty, installation and adhesive information visit mohawkgroup.com

Mohawk Group warrants its adhesives for the life of the original installation only when a Mohawk Group style (product) is installed. Mohawk's floor preparation procedures must be followed to ensure that the substrate has been prepared properly. Failure to use Mohawk Group adhesives or to follow Mohawk's floor preparation procedures will void all lifetime adhesive warranties. Please contact your local Sales Representative for installation guidelines.

These patterns contain inherent characteristics which may result in pattern run off and/or pattern appearance variations at the seams or tile edges (darker or lighter pattern lines). These characteristics are inherent in the patterns and are not manufacturing defects. Consideration to these characteristics should be given when selecting an installation method.

Chair pads are recommended under office chairs with roller casters to preserve appearance retention, act as a deterrent toward delamination and to prevent premature or accelerated wear. Walk-off tiles from the Tuff Stuff II Collection are recommended at entryways to reduce soiling.

Mohawk Group is providing this architect folder for the purpose of promoting our commercial business. This folder and its samples shall remain the property of Mohawk Group. Color may vary from dye lot to dye lot. Substitution of material may be made due to improved technology, supply limitations or other factors. The performance of this product is not affected by such variations.

For current and complete specifications please visit www.mohawkgroup.com



Specifications

Elemental Edges Architectural Wall Base

DESIGN

Architectural Wall Base	SKU
Straight Cut	AWB01
Crisp Edge	AWB02
Sculpted Edge	AWB03
Tapered Wave	AWB04
Module	AWB05
Edge Lap	AWB06
Tilted Edge	AWB08
Quarter Round	AWB09
Product Type	Rubber
Gauge	Varies
Size	Varies
Colors Available	14

PERFORMANCE

Composition	Proprietary TP Rubber formulation including pigments, stabilizers and other functional fillers
Critical Radiant Flux	ASTM E648- Class I (>0.45 W/cm ²)
Fire Resistant	ASTM E 84 - Class II (26-75)
Flame Propagation	UL 992 - < 2.0

SUSTAINABILITY

Certification	FloorScore® Certified
Country of Origin	USA

SERVICE

Warranties	Limited 10 Year Warranty
------------	--------------------------

For detailed warranty, installation and adhesive information visit mohawkgroup.com

Mohawk Group warrants its adhesives for the life of the original installation only when a Mohawk Group style (product) is installed. Mohawk's floor preparation procedures must be followed to ensure that the substrate has been prepared properly. Failure to use Mohawk Group adhesives or to follow Mohawk's floor preparation procedures will void all lifetime adhesive warranties. Please contact your local Sales Representative for installation guidelines.

These patterns contain inherent characteristics which may result in pattern run off and/or pattern appearance variations at the seams or tile edges (darker or lighter pattern lines). These characteristics are inherent in the patterns and are not manufacturing defects. Consideration to these characteristics should be given when selecting an installation method.

Chair pads are recommended under office chairs with roller casters to preserve appearance retention, act as a deterrent toward delamination and to prevent premature or accelerated wear. Walk-off tiles from the Tuff Stuff II Collection are recommended at entryways to reduce soiling.

Mohawk Group is providing this architect folder for the purpose of promoting our commercial business. This folder and its samples shall remain the property of Mohawk Group. Color may vary from dye lot to dye lot. Substitution of material may be made due to improved technology, supply limitations or other factors. The performance of this product is not affected by such variations.

For current and complete specifications please visit www.mohawkgroup.com

