

Altar of the Succubi

Before assembling your Altar, please keep in mind that it is a seriously complex kit, both in terms of manufacturing and assembling.

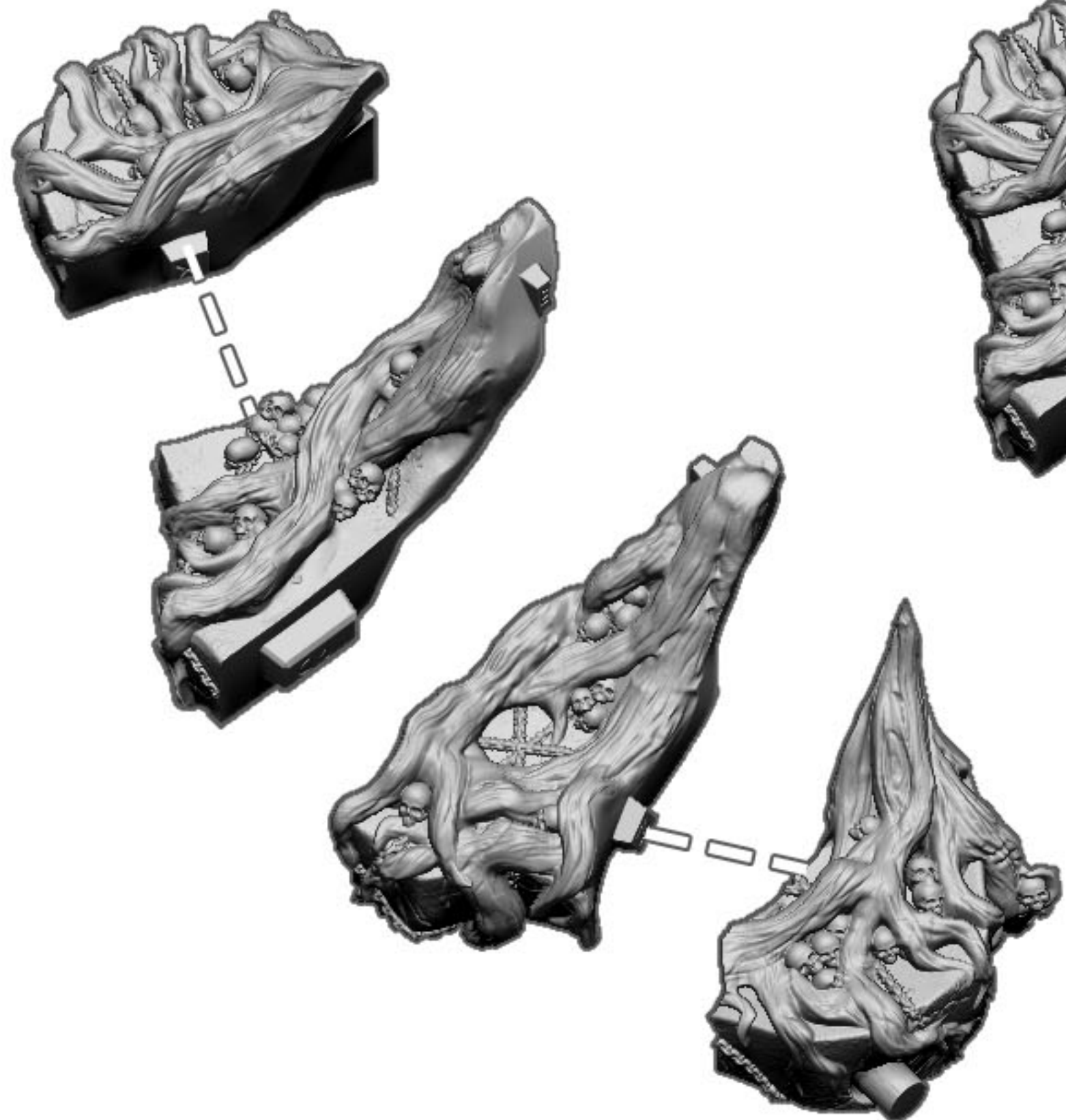
Making such a big piece in resin is quite a challenge, especially when it is not a fully organic shape, but rather a large man-built (well, elven-built) structure.

When a resin piece is cast, it always shrinks or warps, there is no way around it. Depending on the type of part, the foundry can minimize that effect, but whatever they do, it will always happen.

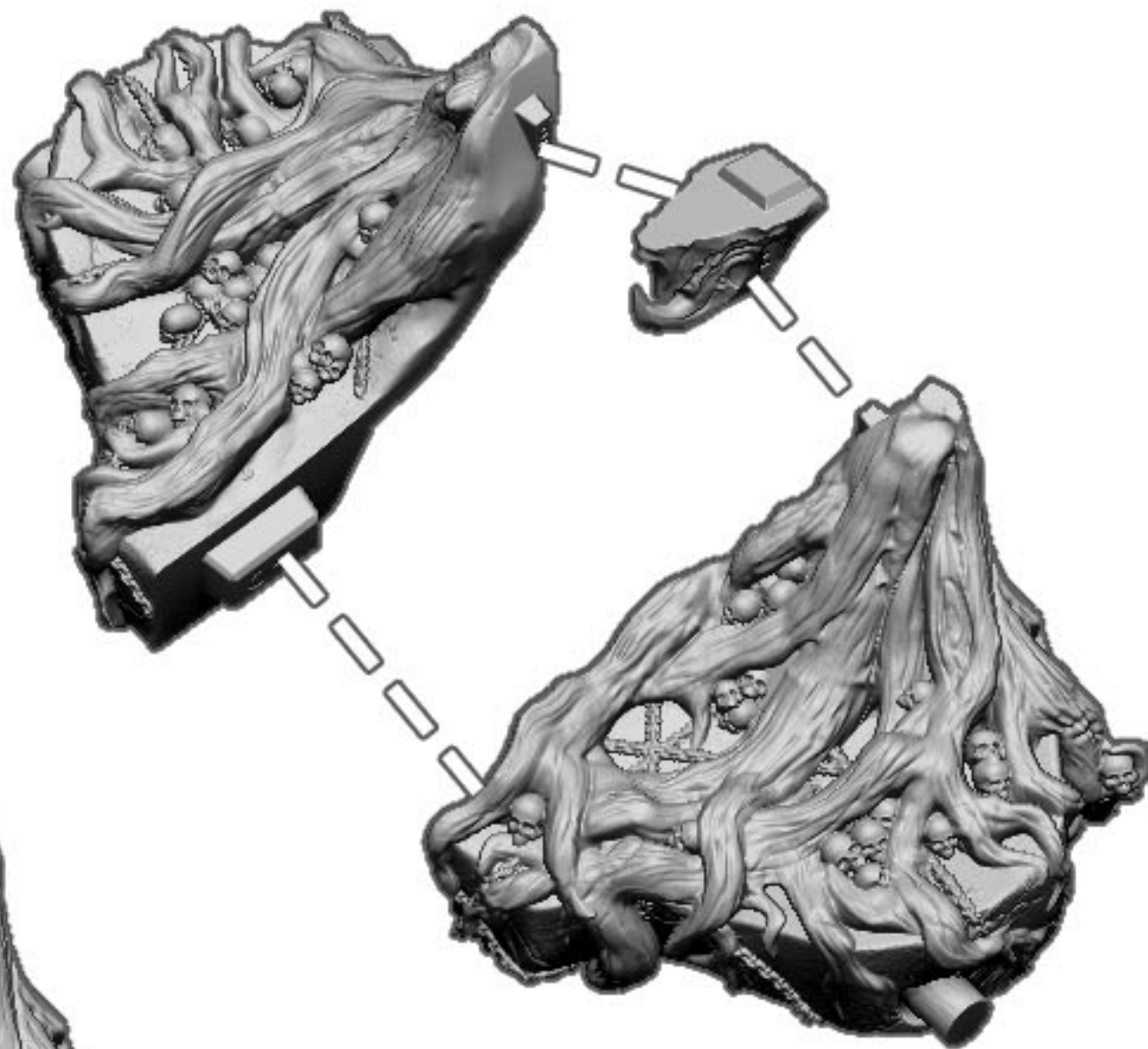
On smaller pieces, this is rarely a problem. But on non-organic shapes or fairly thick parts, the effect tends to be stronger. It is not a big issue, but it means that you will have some modeling to do if you want to make the parts fit perfectly.

No need to worry, though. Check this detailed assembly chart and **do make sure to also watch the video tutorial** we've made for you on how to make yourself an insanely awesome Altar of the Succubi... <https://youtu.be/4px1LUL0vpI>

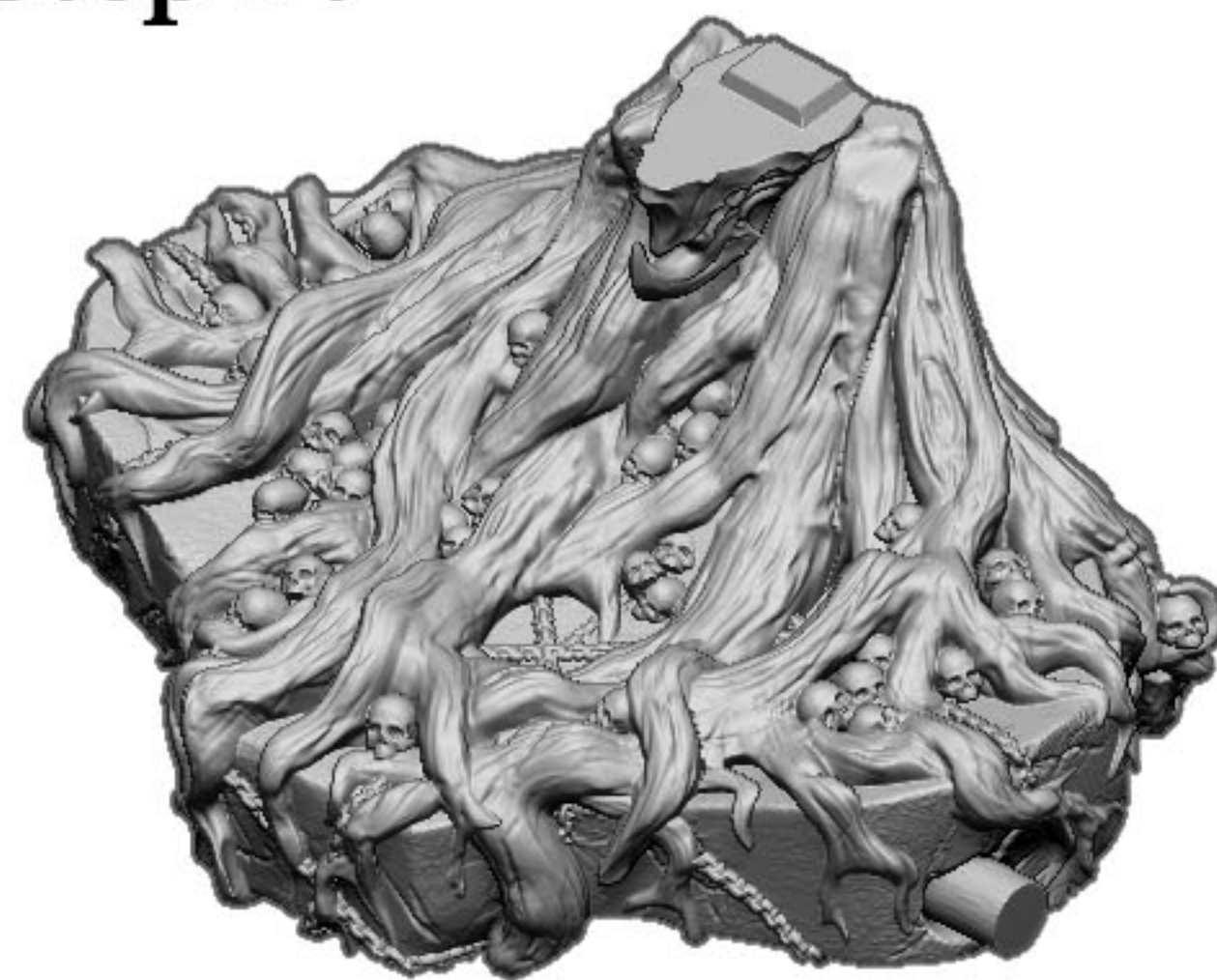
Step 1:



Step 2:

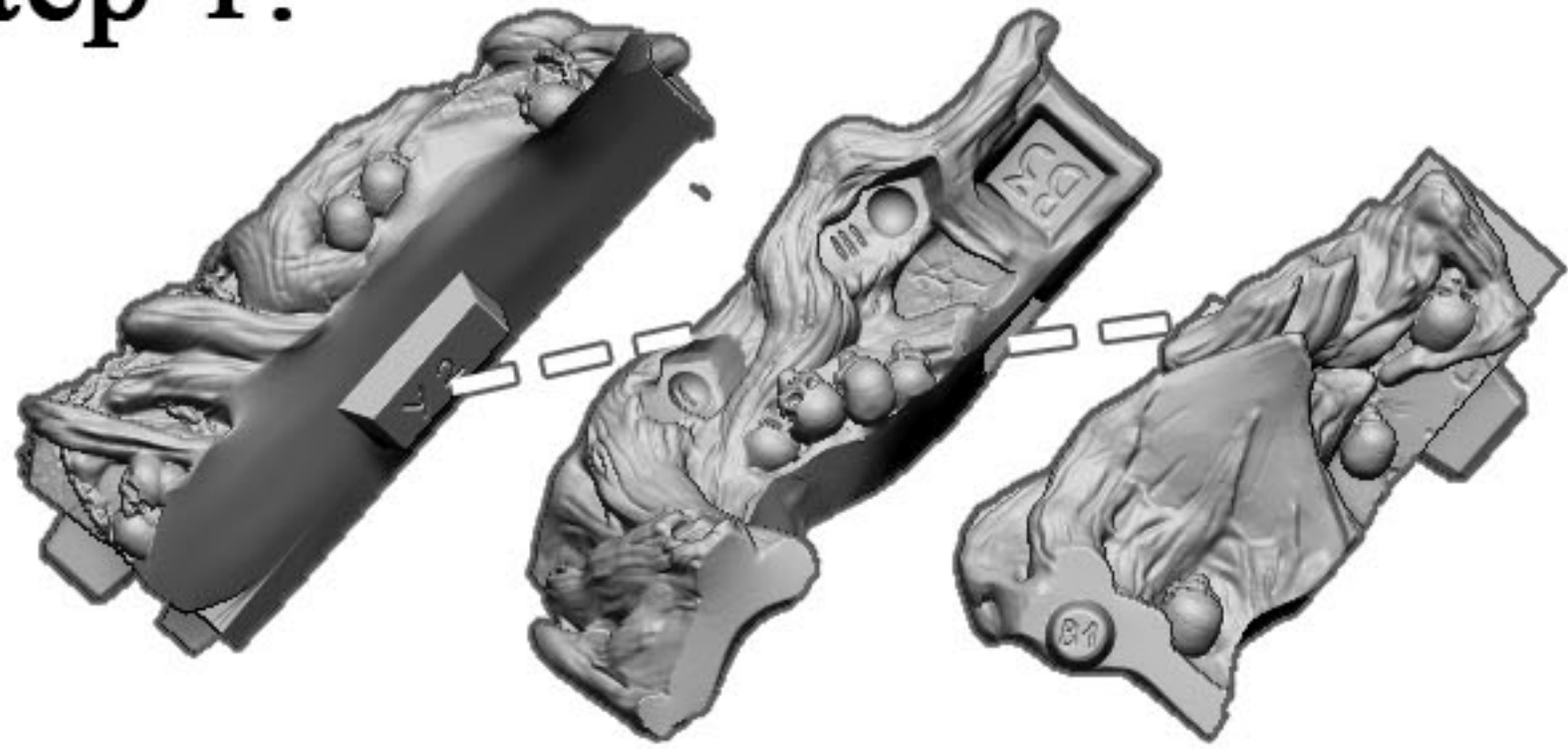


Step 3:

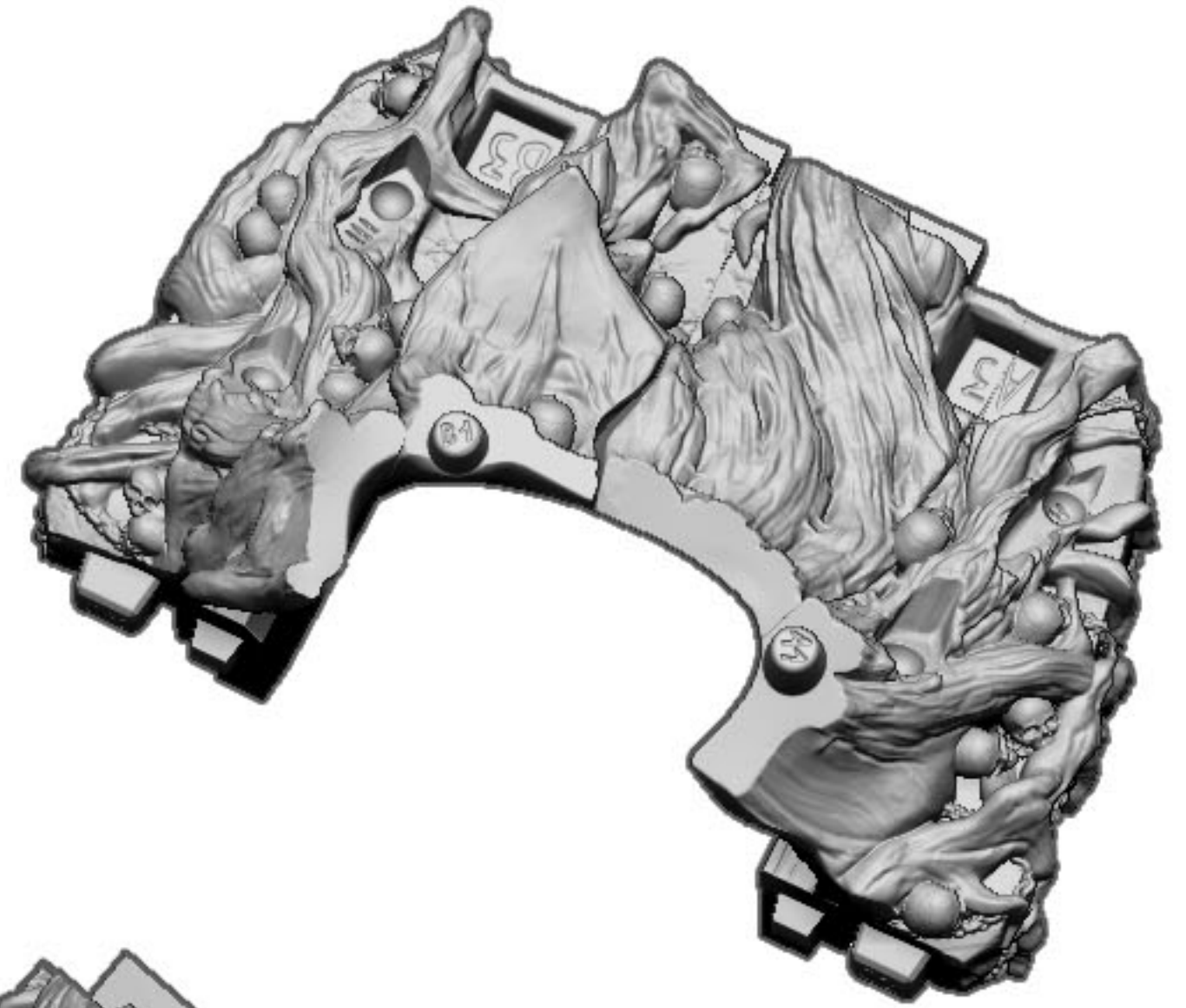
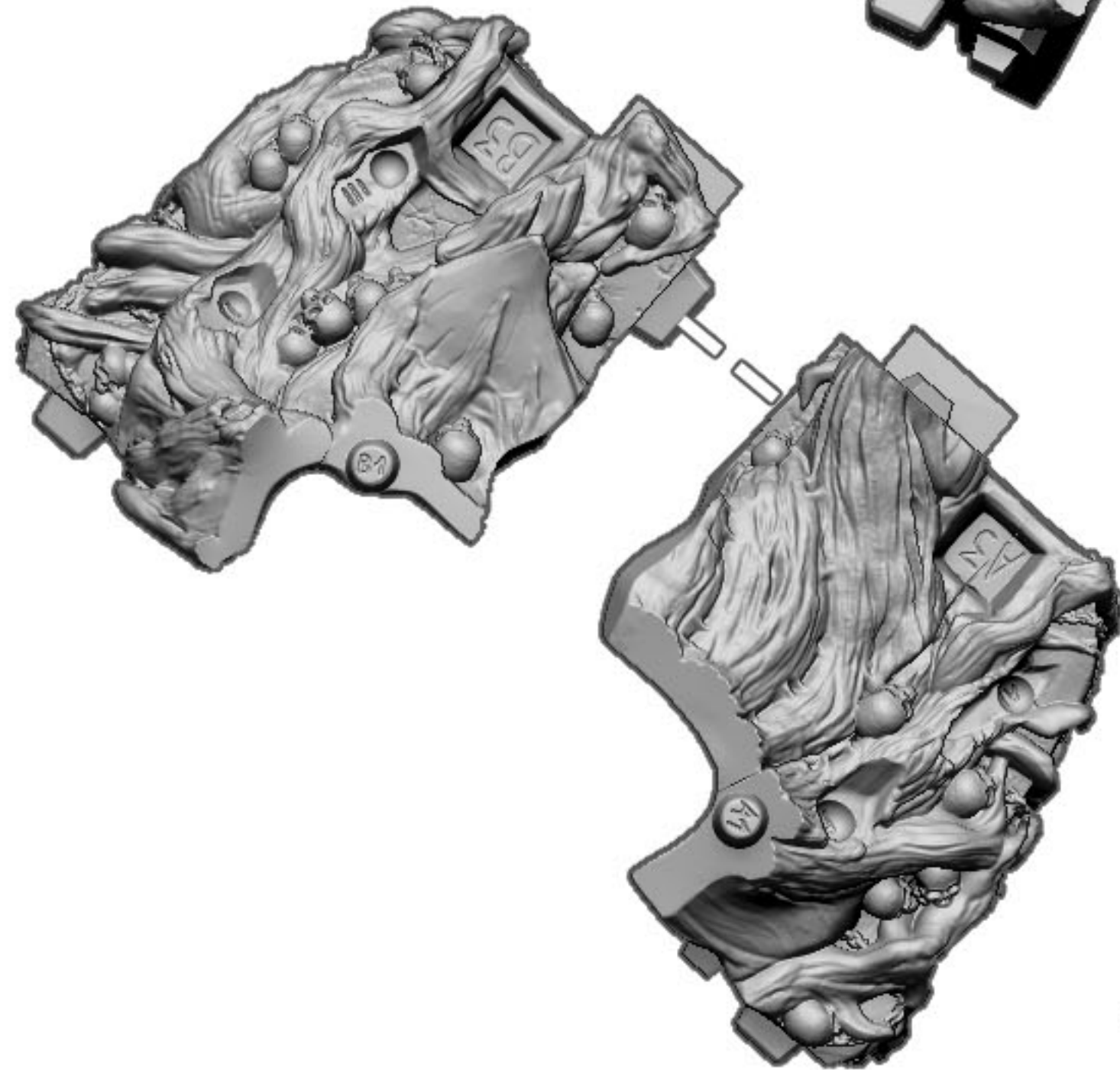


1. Front part

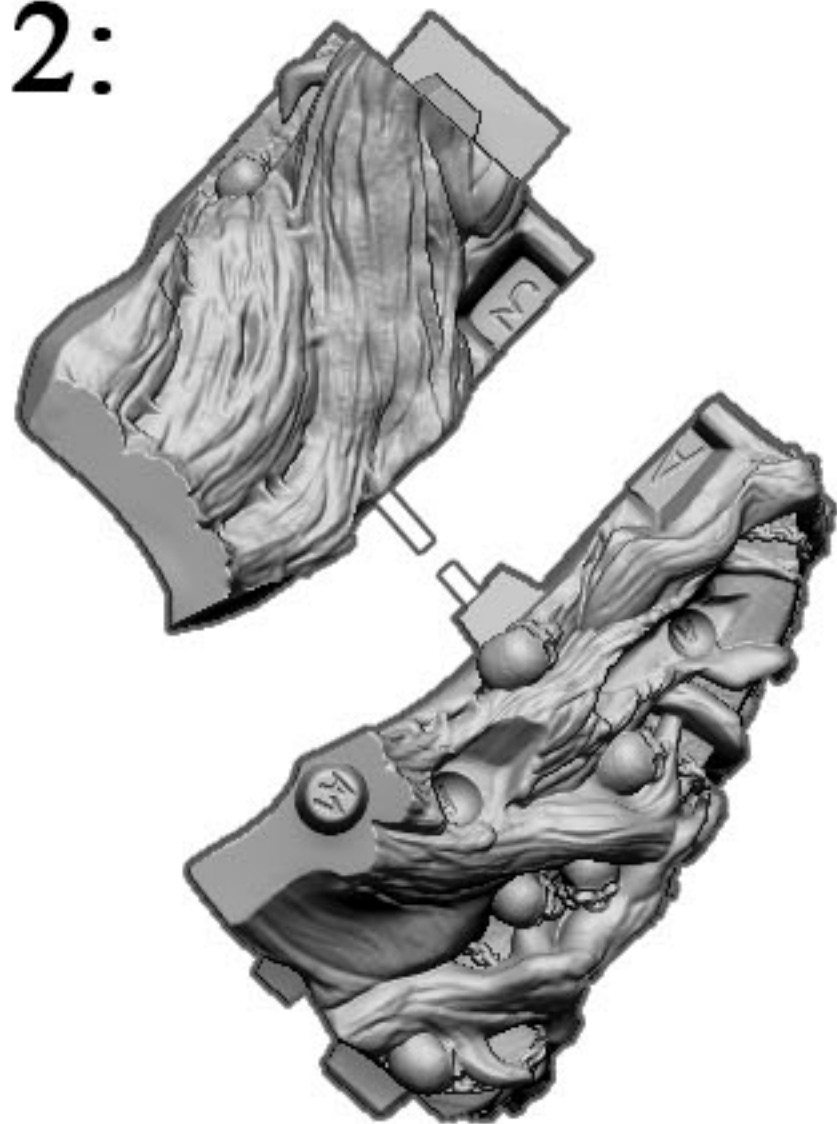
Step 1:



Step 3:



Step 2:

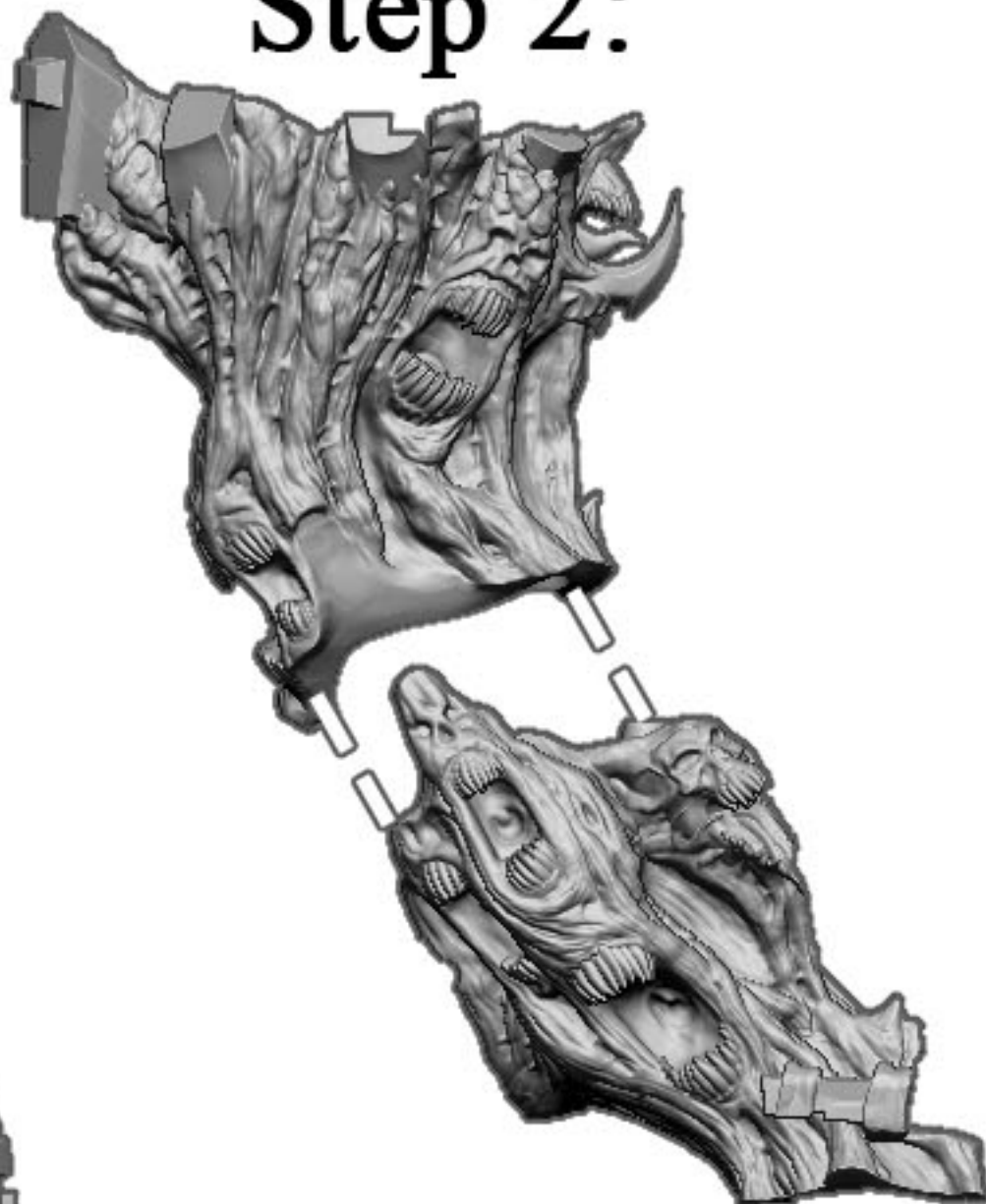


2. Back part

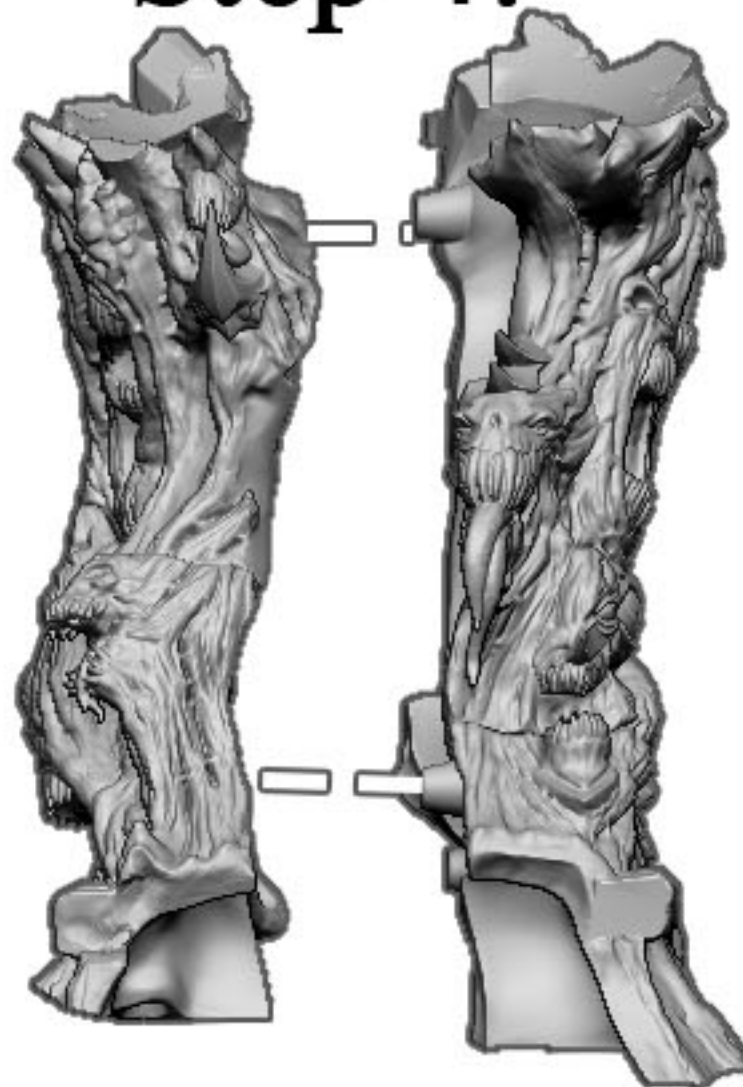
Step 1:



Step 2:



Step 4:



Step 3:

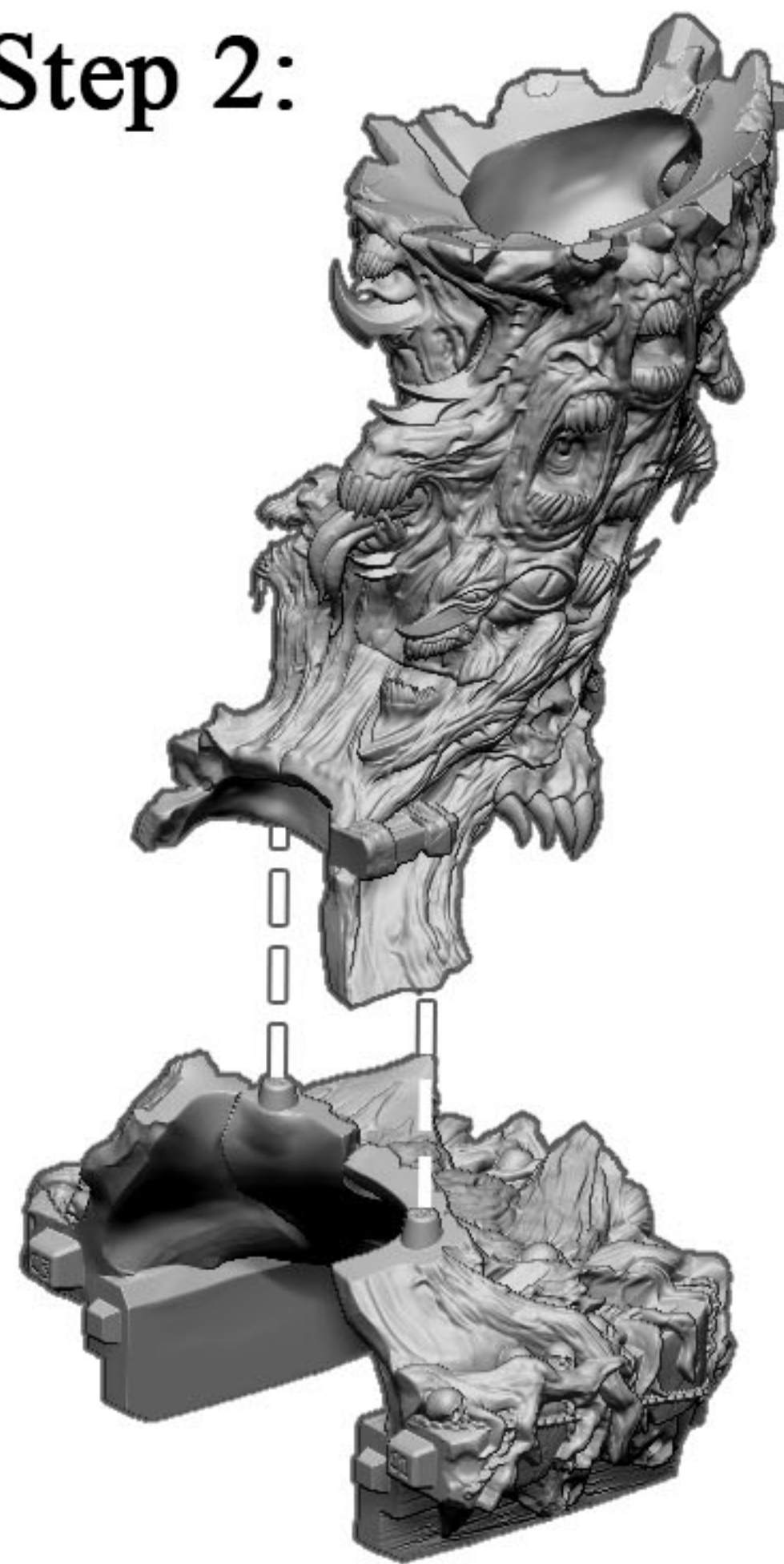


3 - Trunk

Step 1:

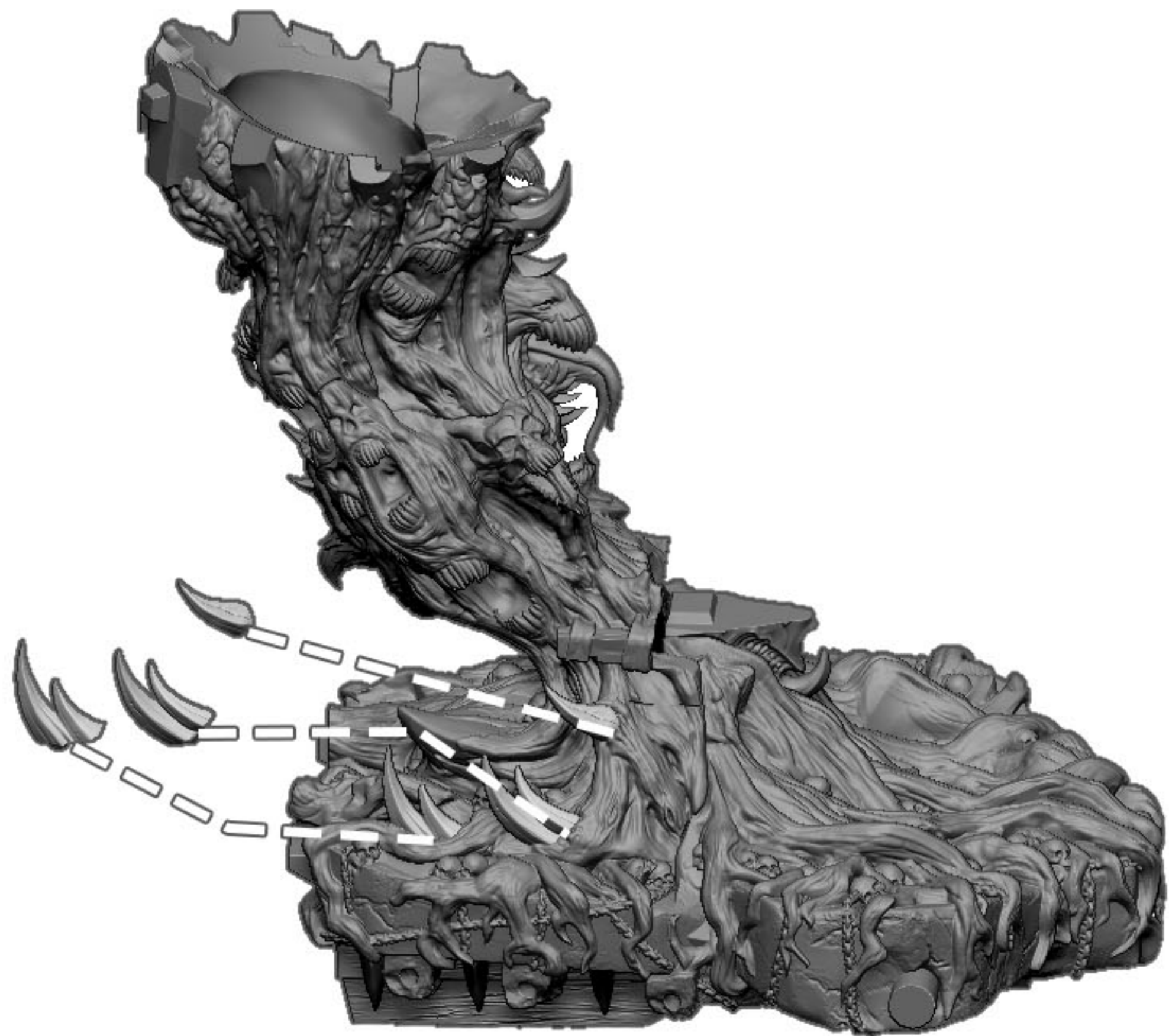


Step 2:



4 - Assemble full Base and Trunk

Step 1:



Step 2:

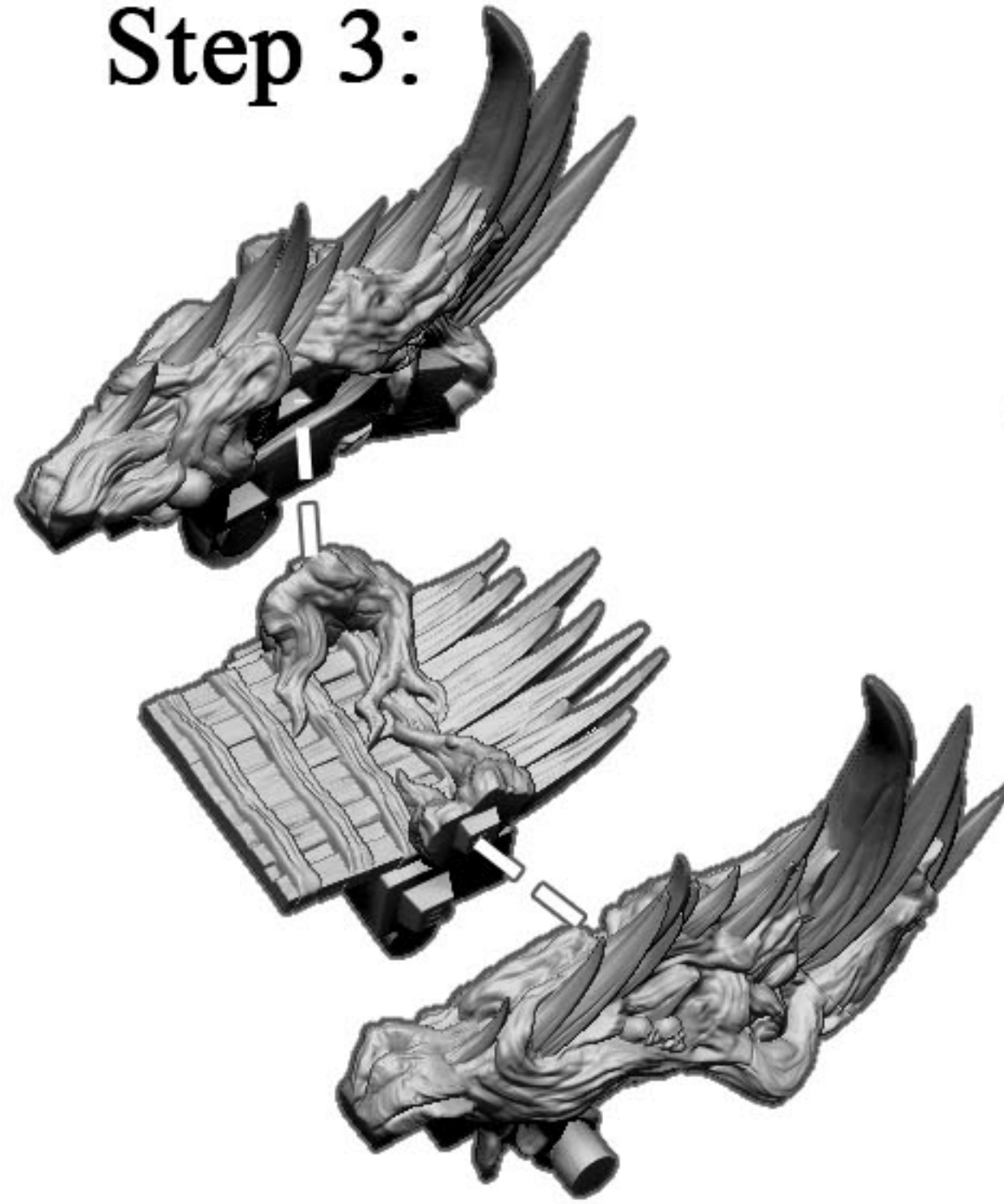


5 - Add Spikes

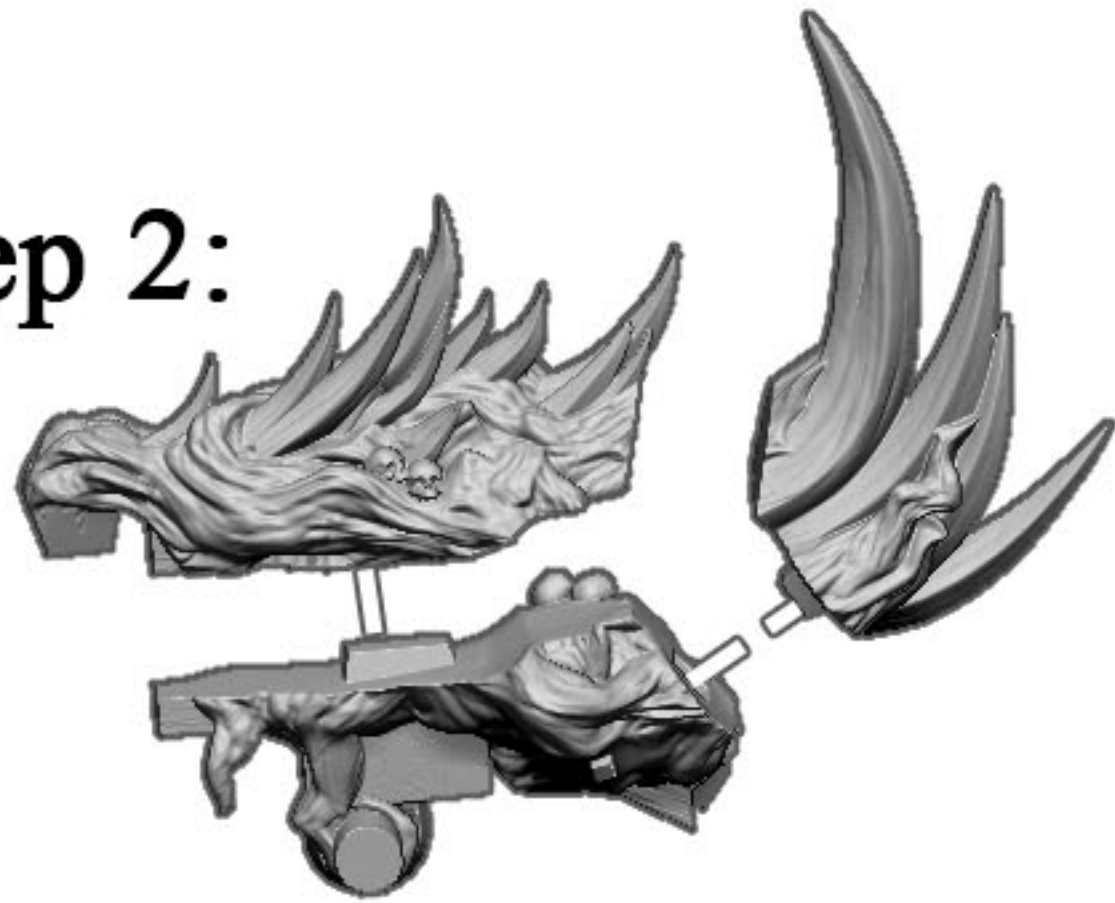
Step 1:



Step 3:



Step 2:



6 - Assemble Back Part

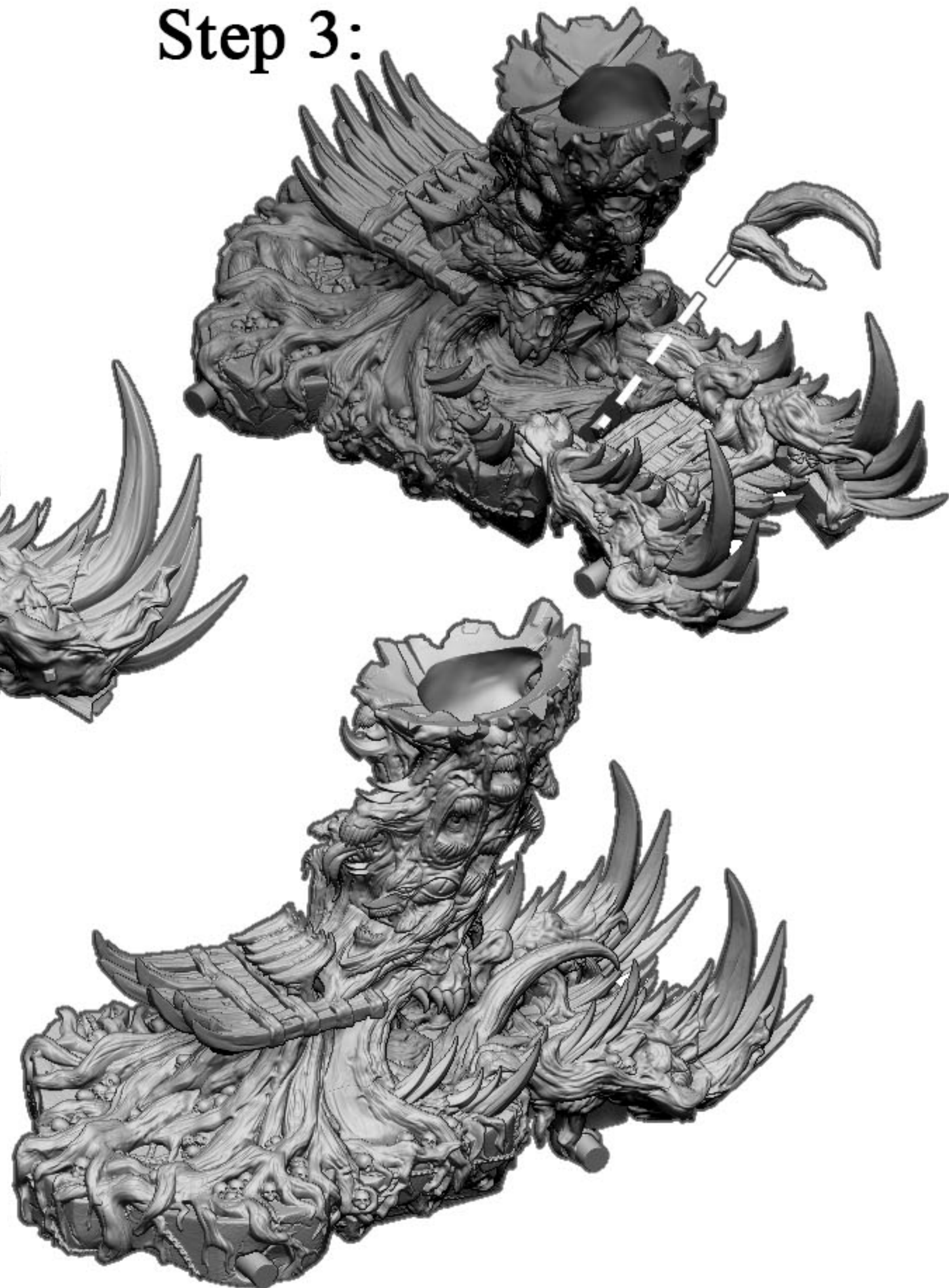
Step 1:



Step 2:

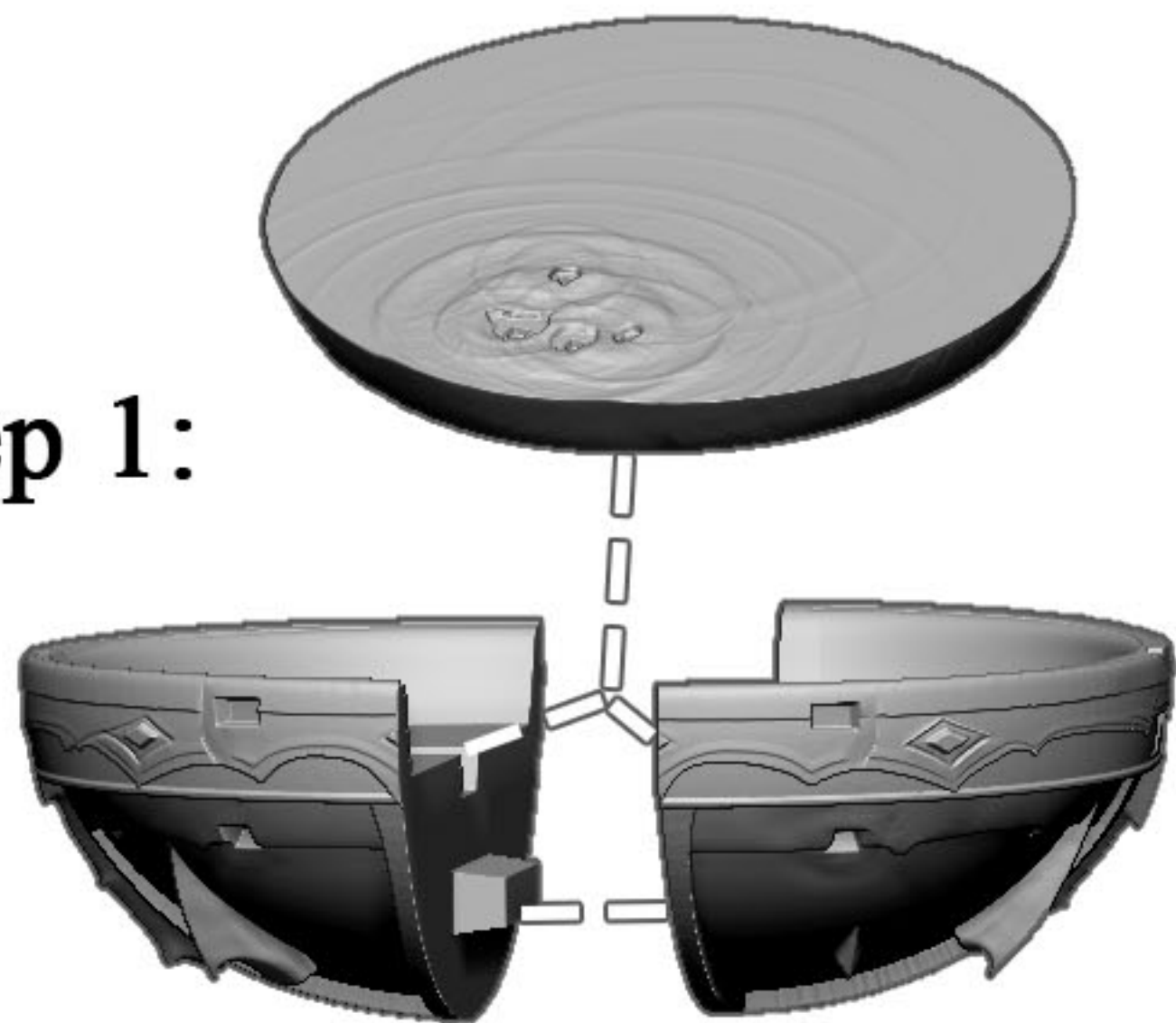


Step 3:

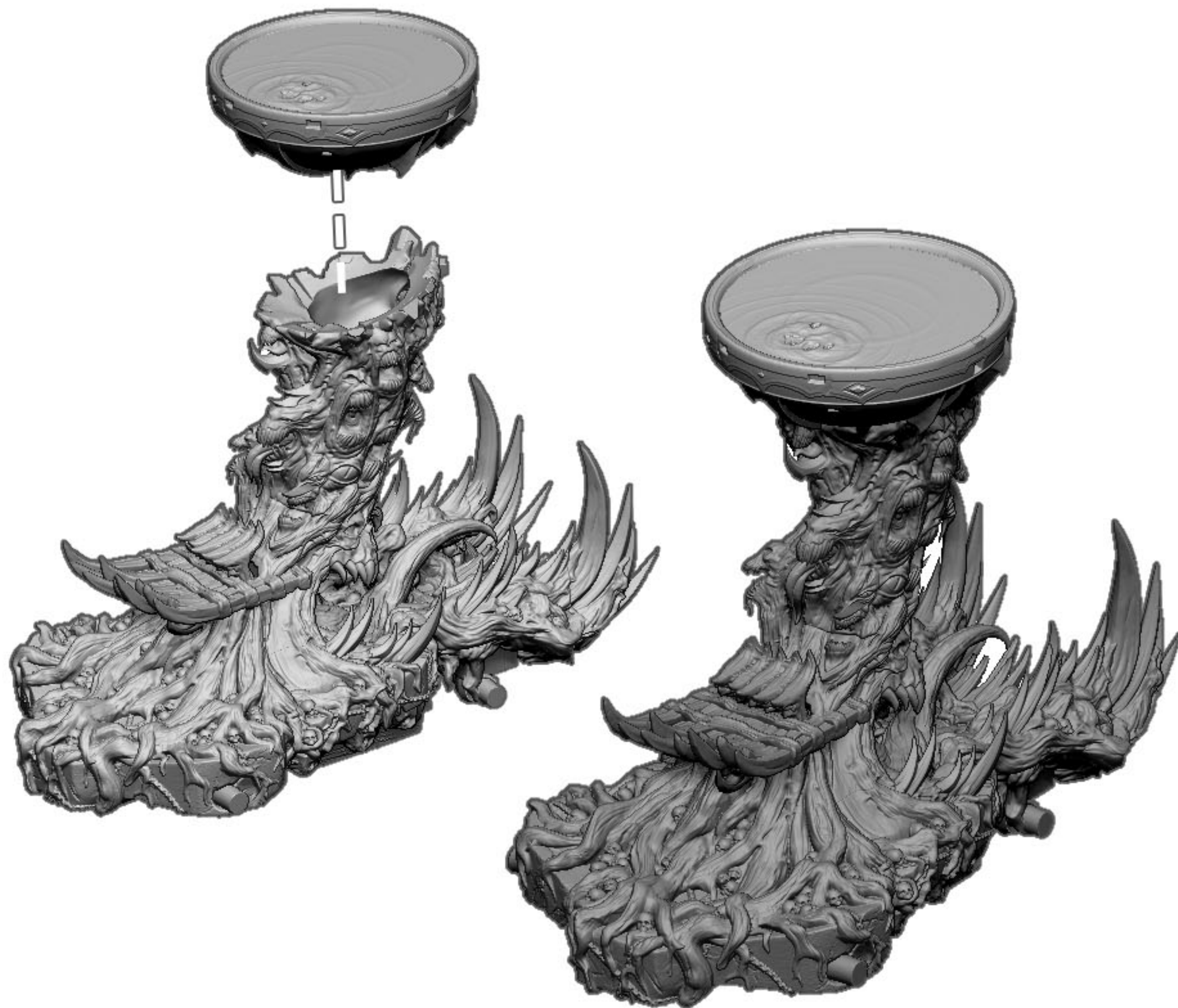


7 - Add Front and Back Part

Step 1:



Step 2:



8 - Assemble Blood Well

8 - Add Blood Well Spikes

Step 1:

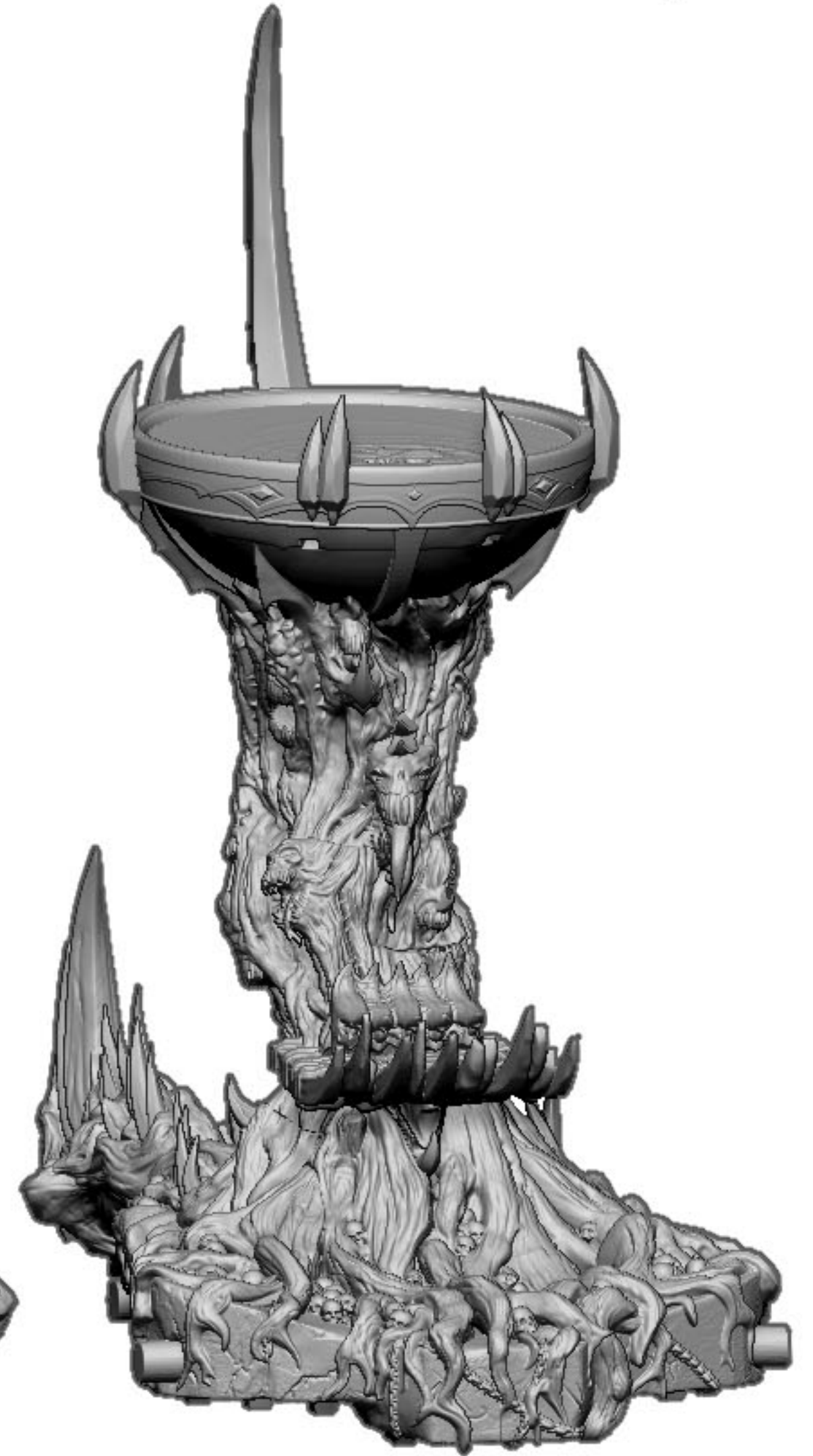
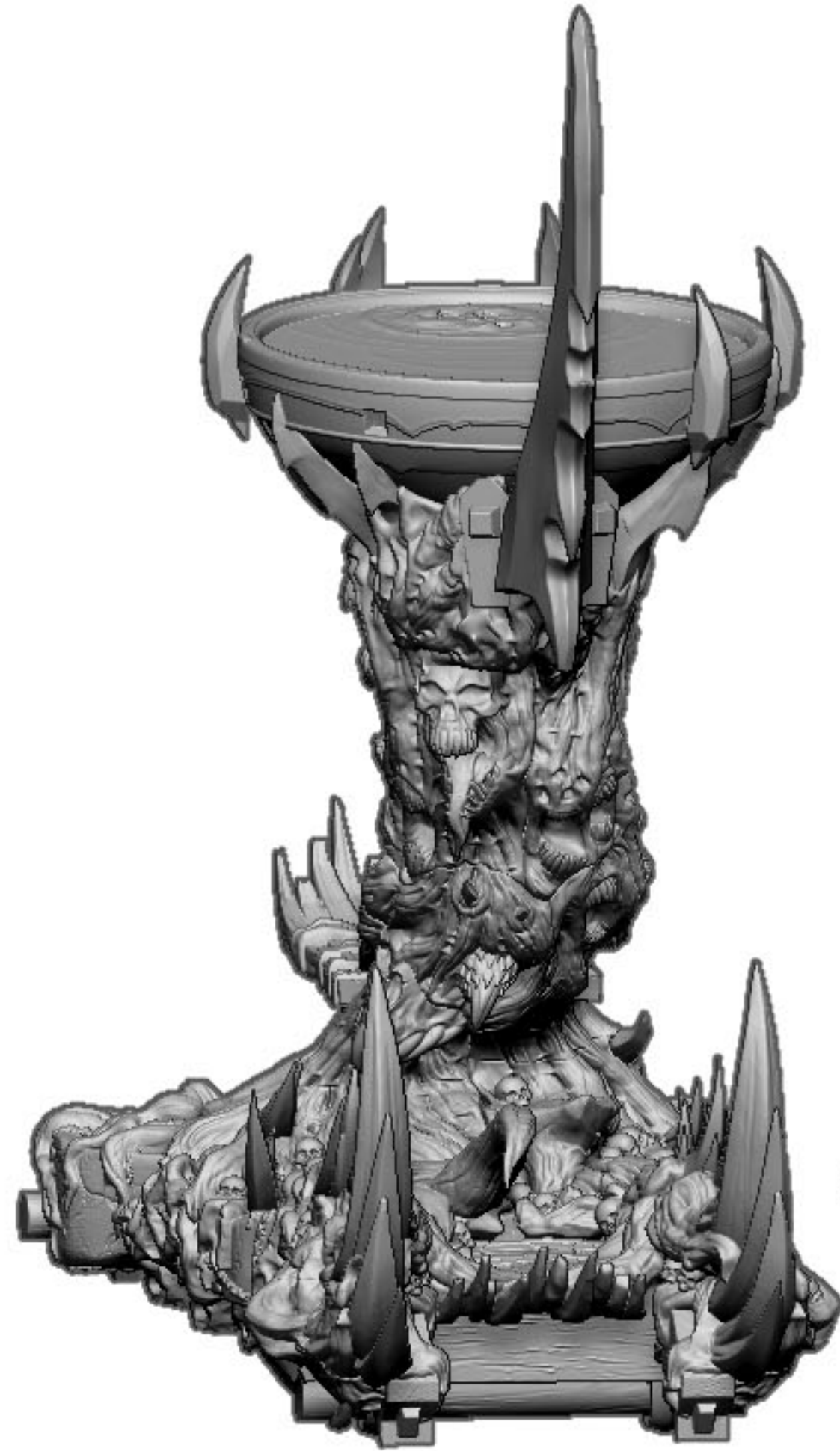
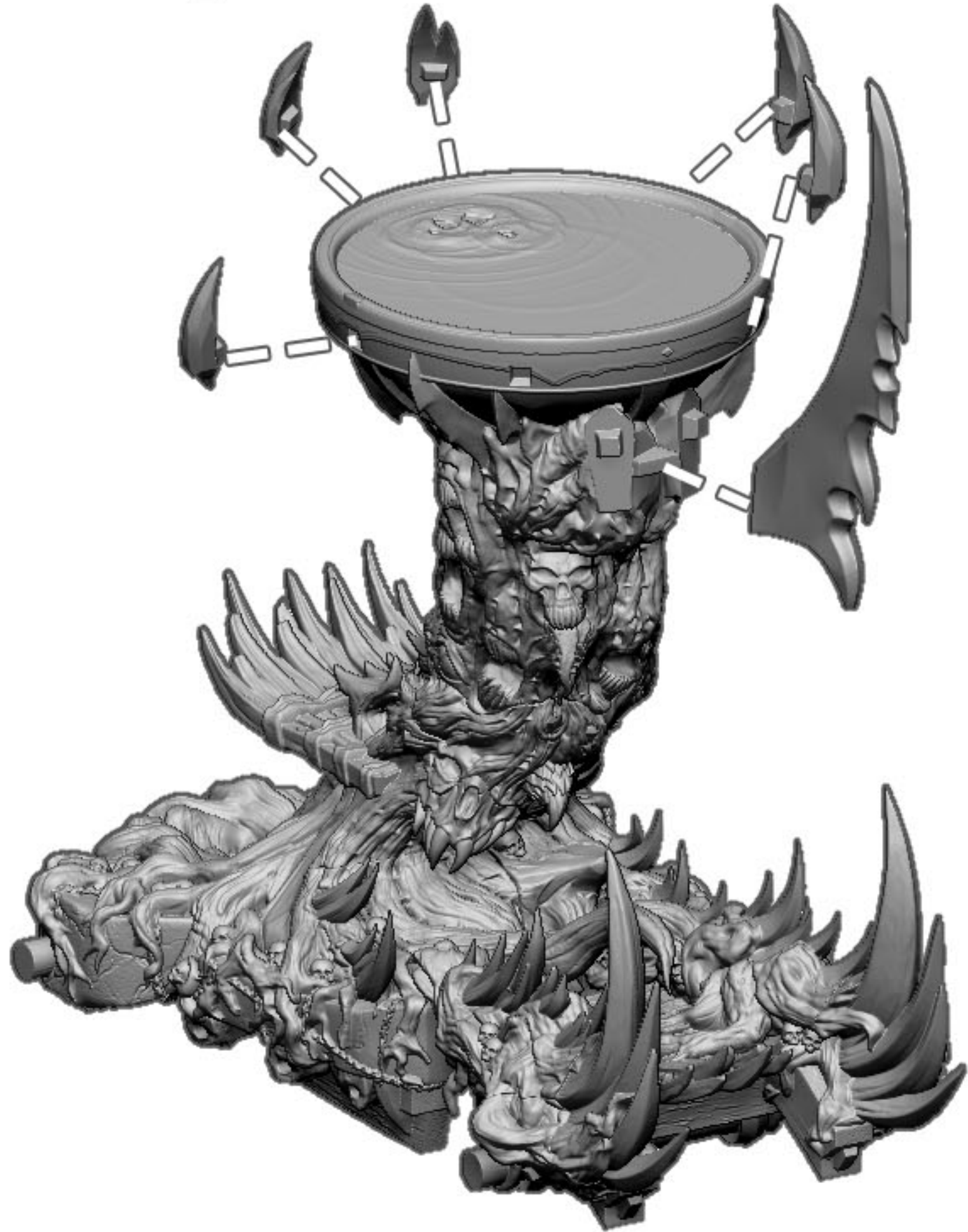




Figure 2 - Assemble Vestals

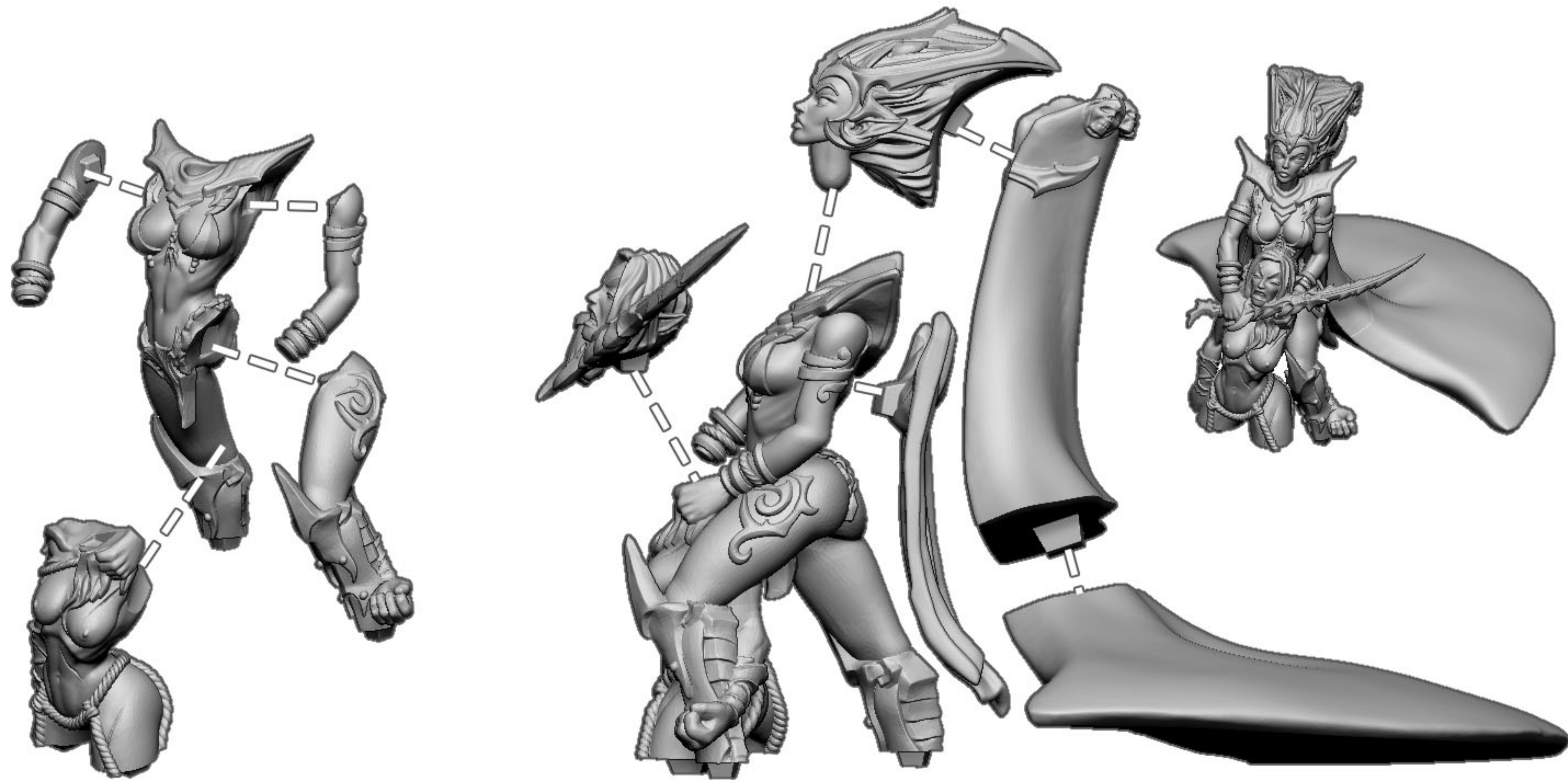
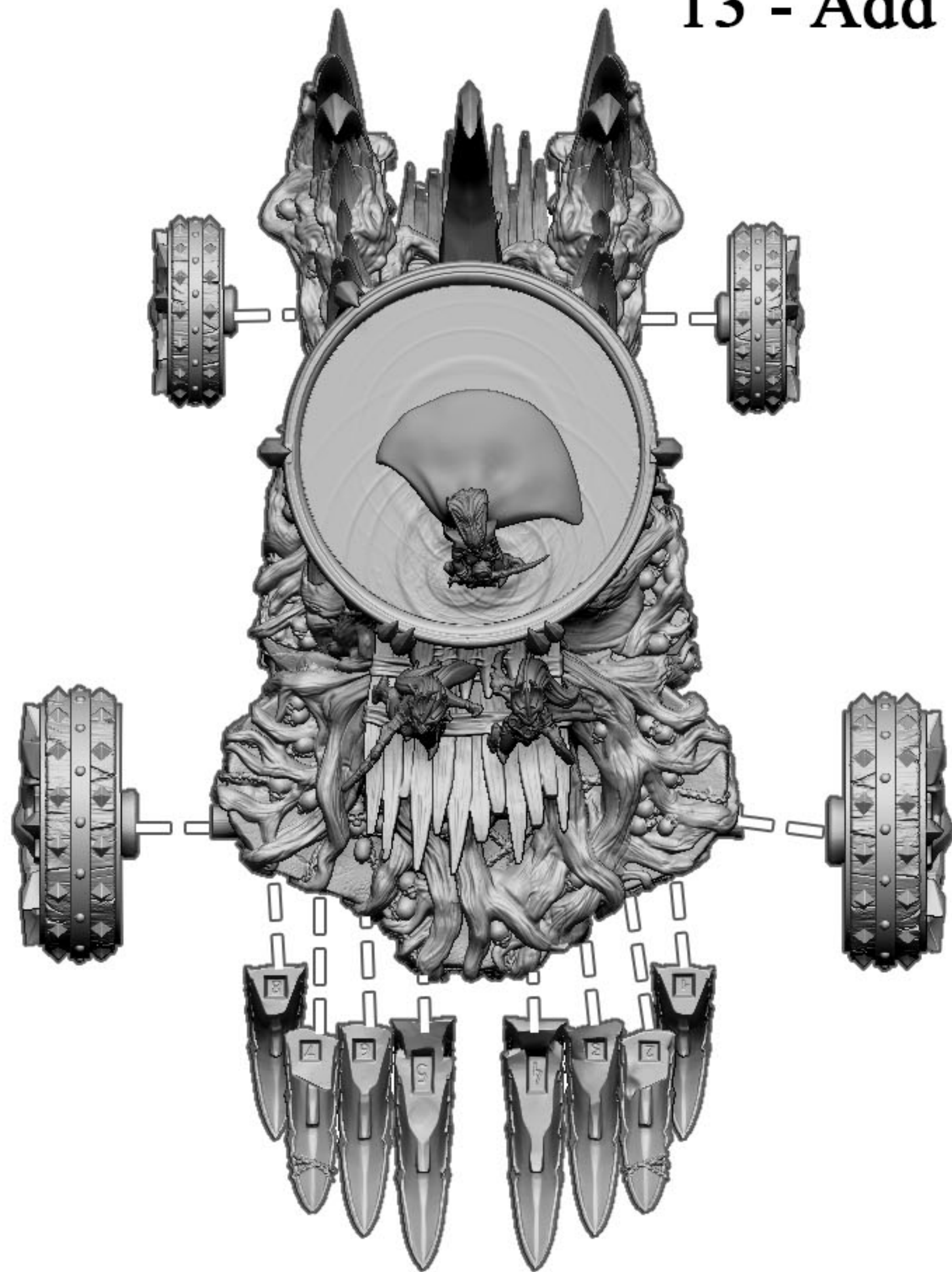


Figure 1 - Assemble Sinzirith

12 - Adding Characters

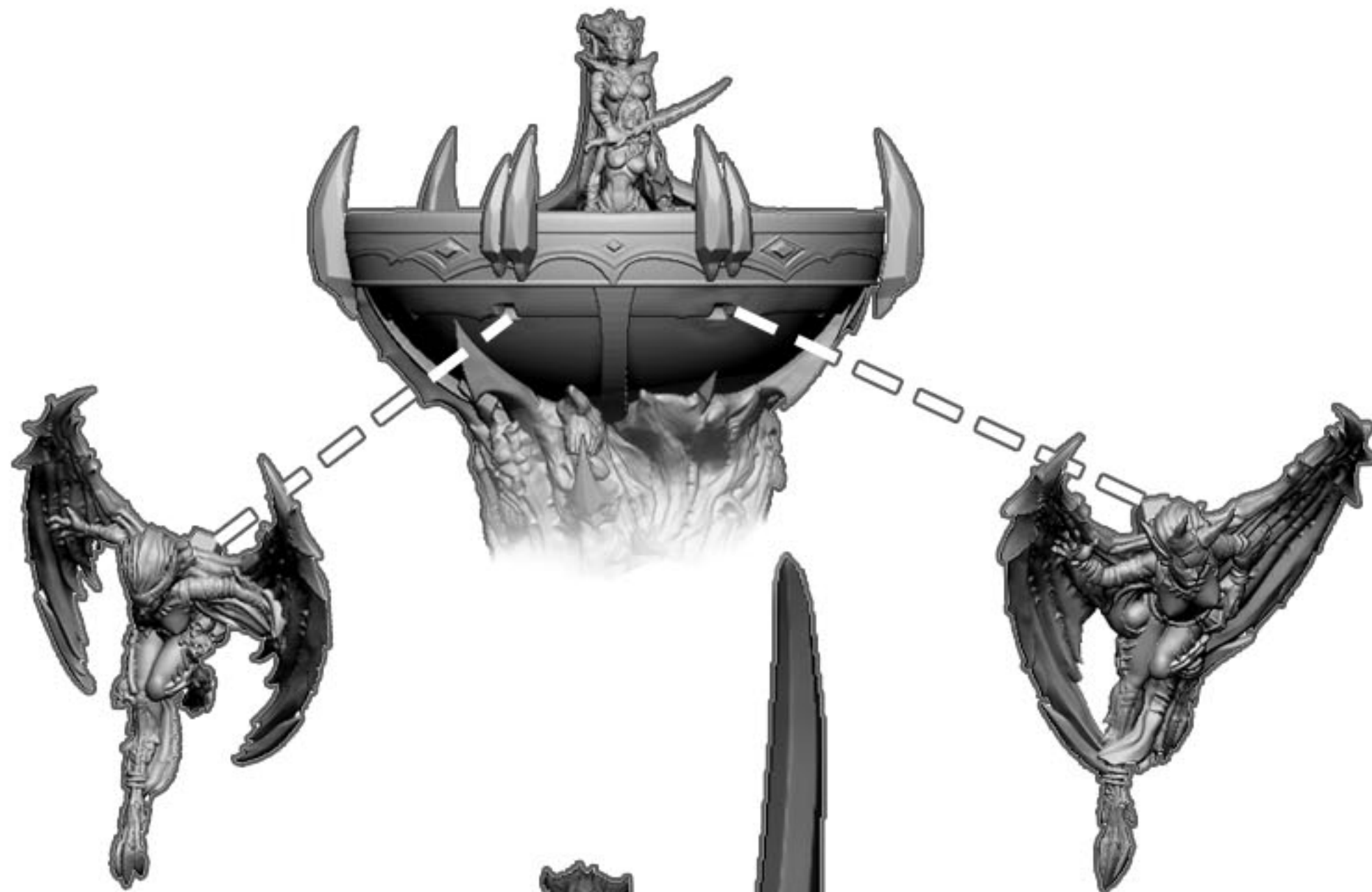


13 - Add front Spikes and Wheels





Harpy A

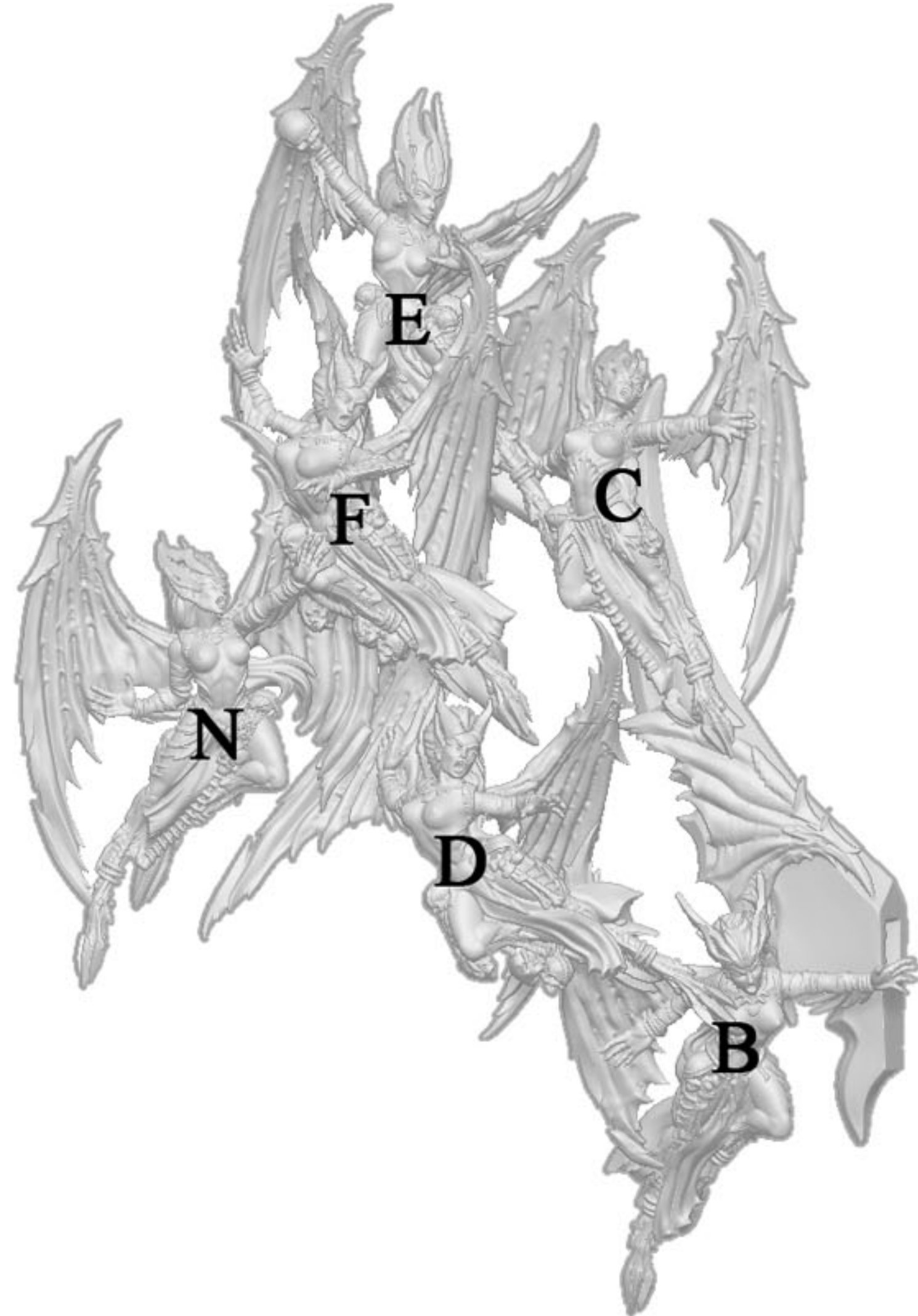


Harpy H



**14 - Add
Two front harpies**

15 - Right Side Harpies Part 1



Harpy E



Harpy B

15 - Right Side Harpies Part 2



Harpy D

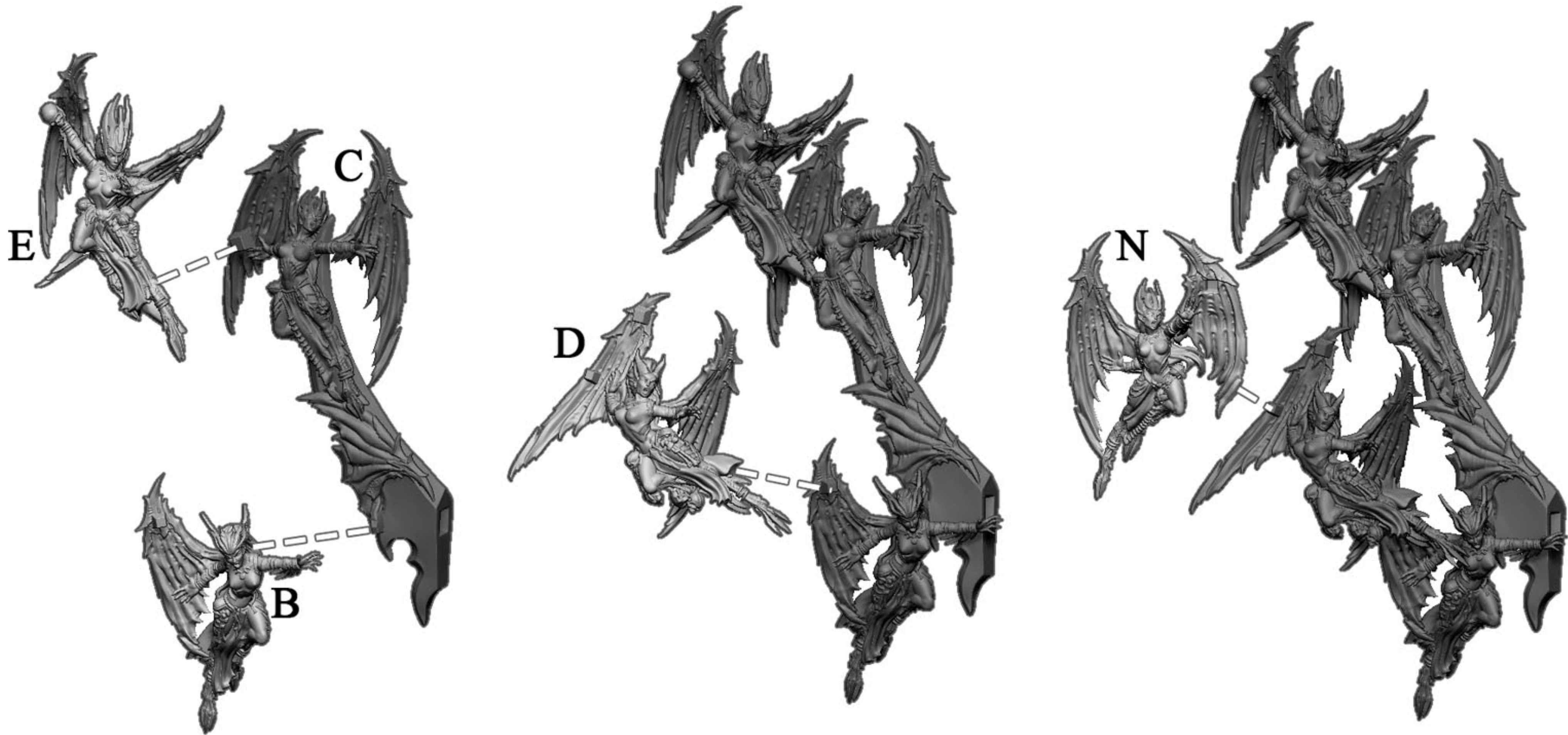


Harpy N



Harpy F

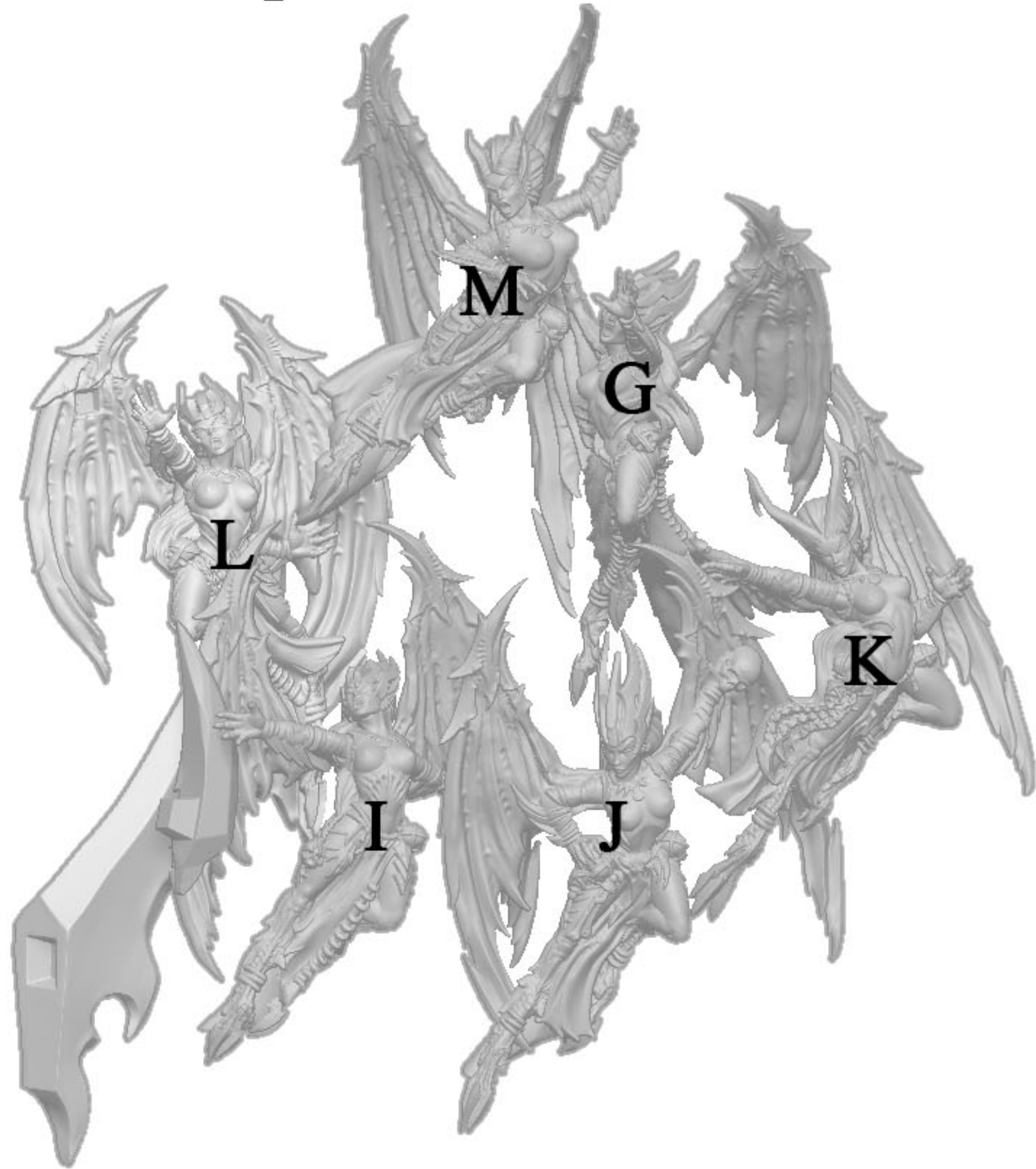
16 - Right Side Harpies Part 1



16 - Right Side Harpies Part 2



17 - Left Harpies Part 1



Harpy L



Harpy M

17 - Left Harpies Part 2



Harpy G

Harpy I

Harpy J

Harpy K

18 - Left Side Harpies Part 1



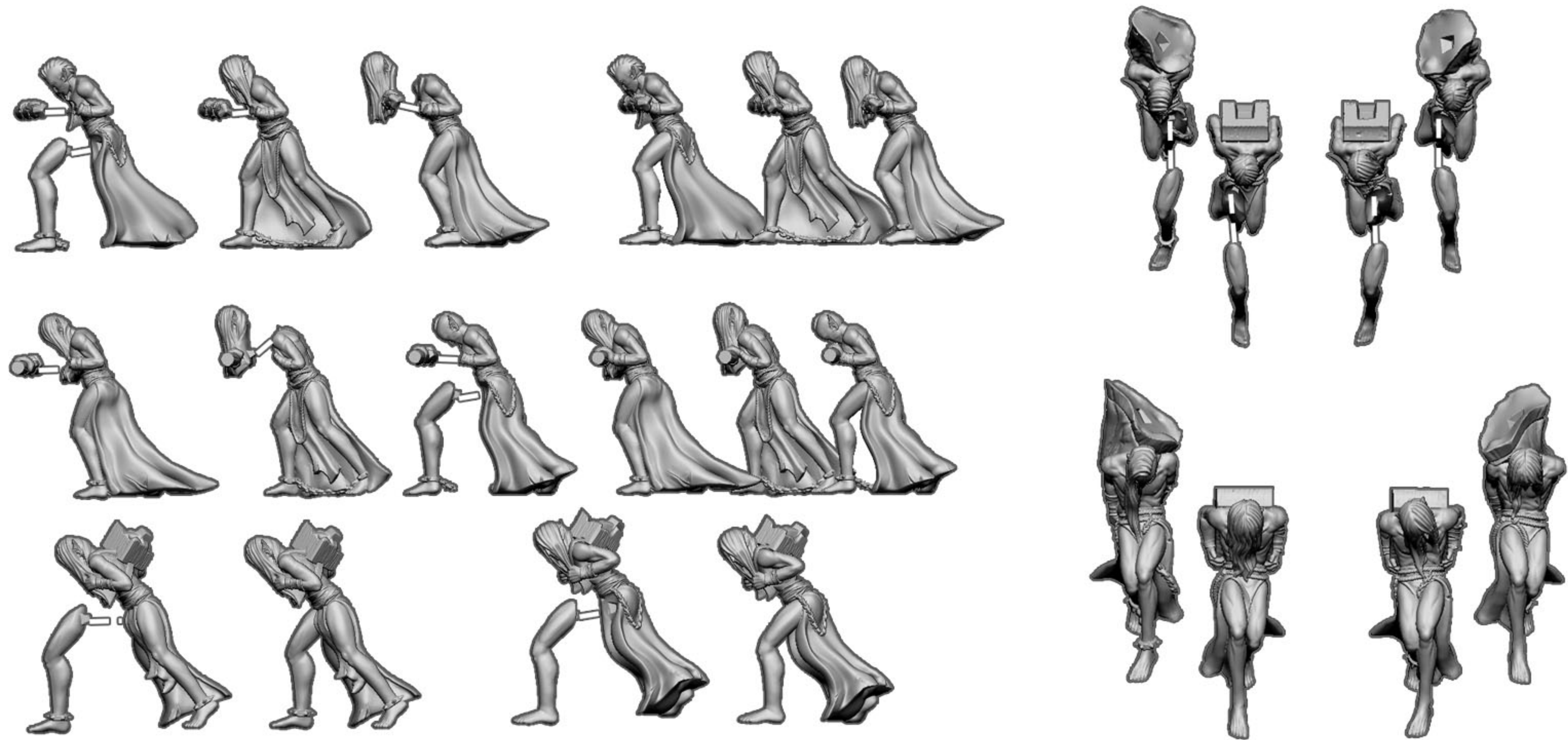
18 - Left Side Harpies Part 2



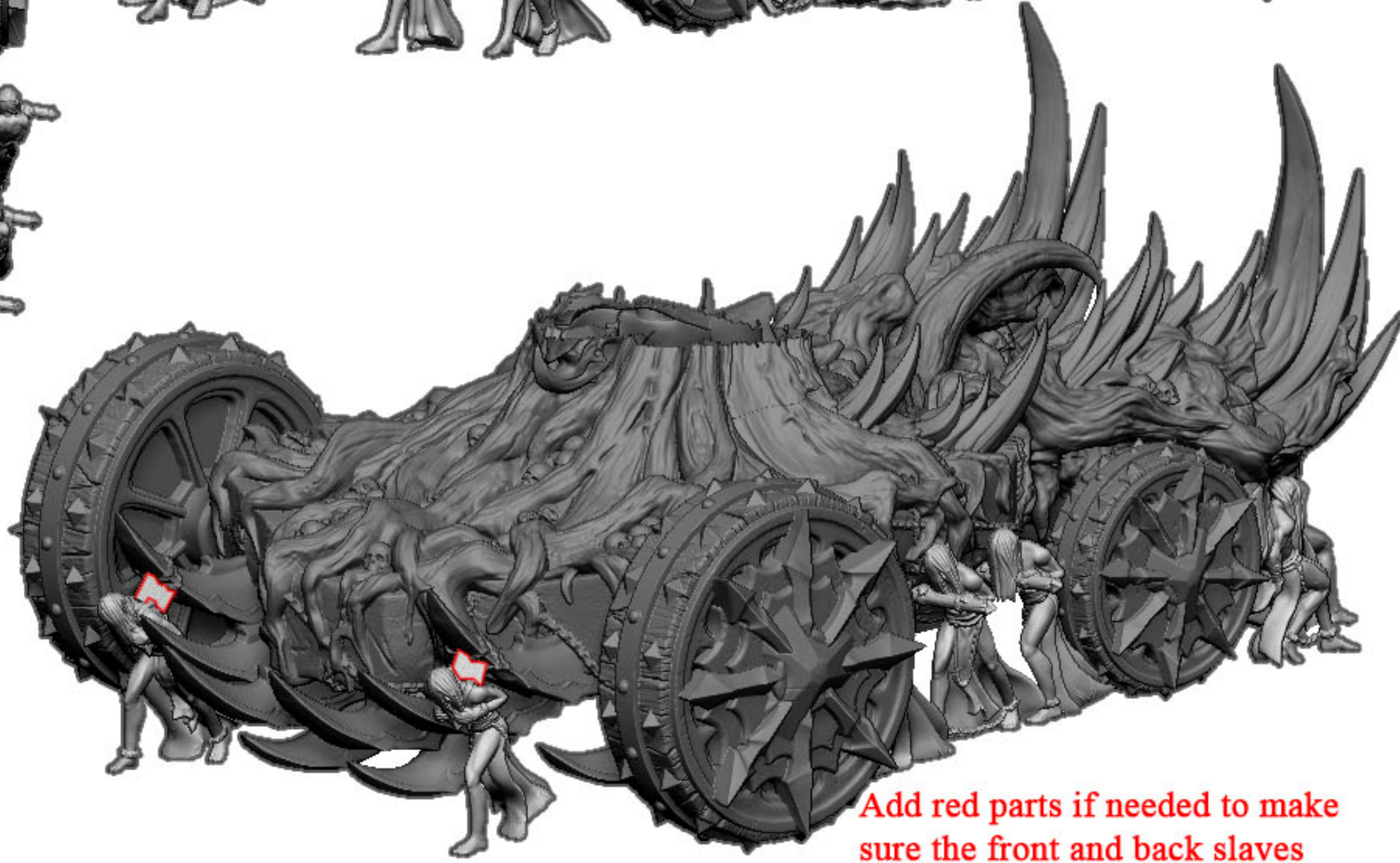
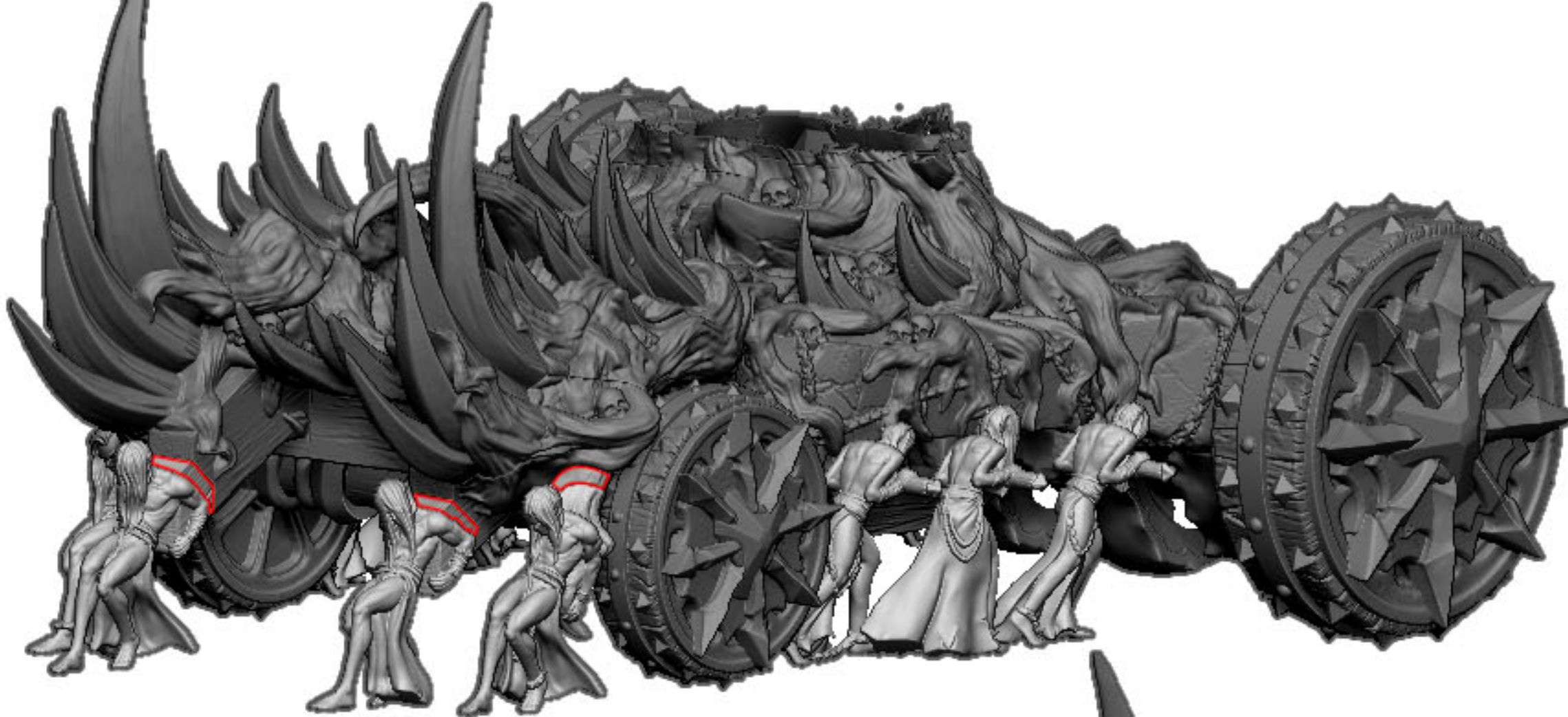
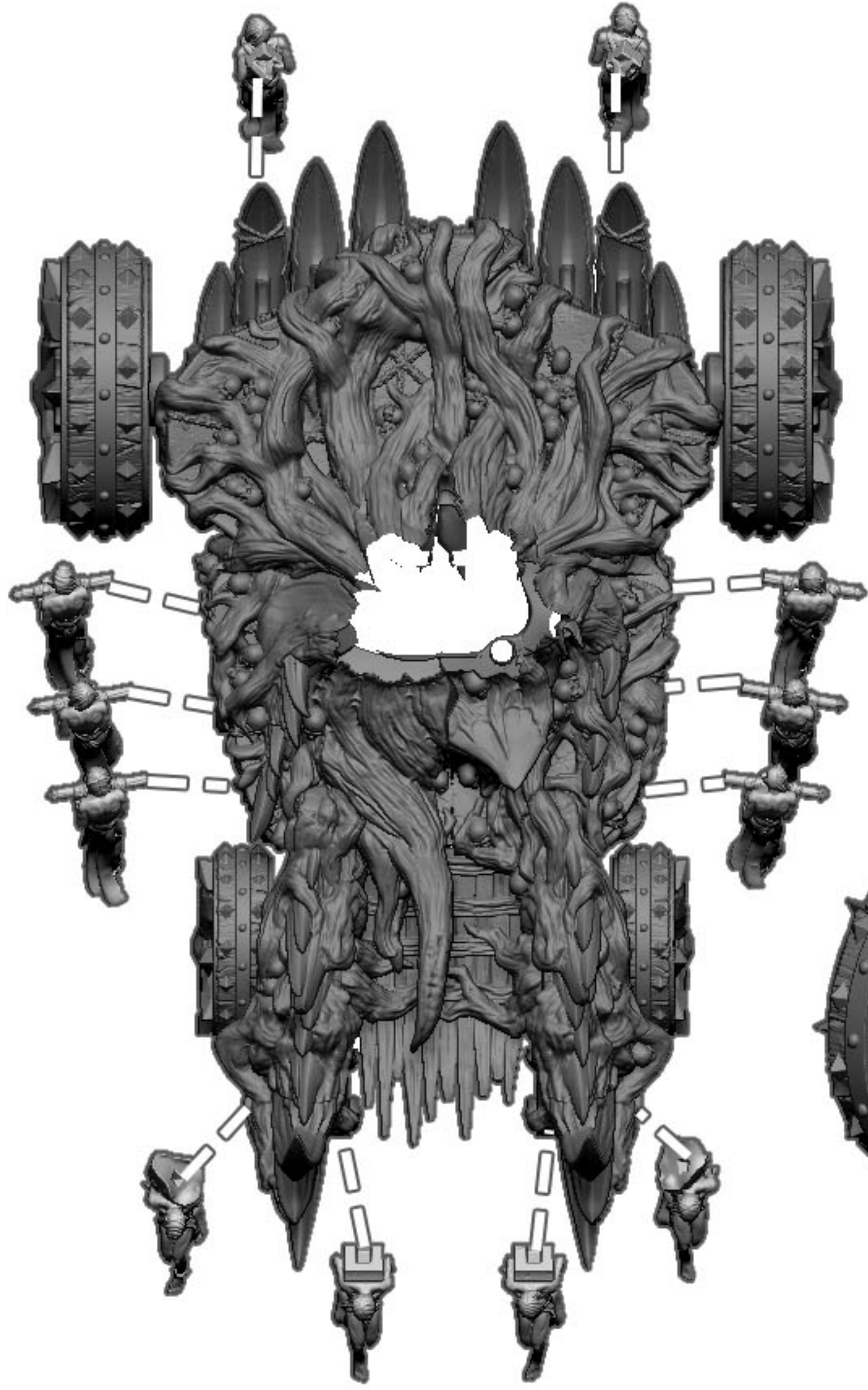
19 - Adding Harpies to the Altar



20 - Assembling Slaves



21- Adding Slaves



Add red parts if needed to make sure the front and back slaves are touching the ground