

# User Guide for IRIS VR Headset

## User Guide Content

Part 1. Basic Introduction

Part 2. How to scroll up&down within the screen

Part 3. How to manage files

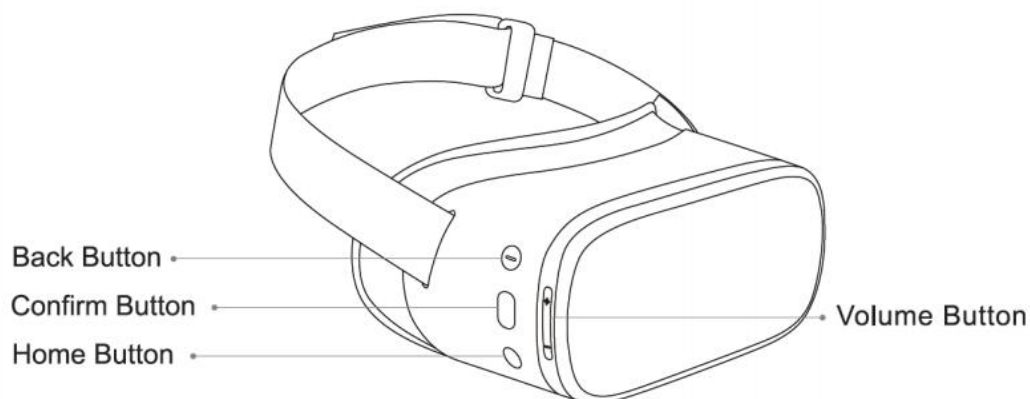
Part 4. How to play video files stored in your PC

Part 5. How to install apps

Visit our help center: <https://help.pvr.fun> to find more tutorials. For any question, please contact us via [contact@pvr.fun](mailto:contact@pvr.fun)

---

Part 1. Basic Introduction



Back Button:

Single click or double click it (when required) to return to the previous interface.

Confirm Button:

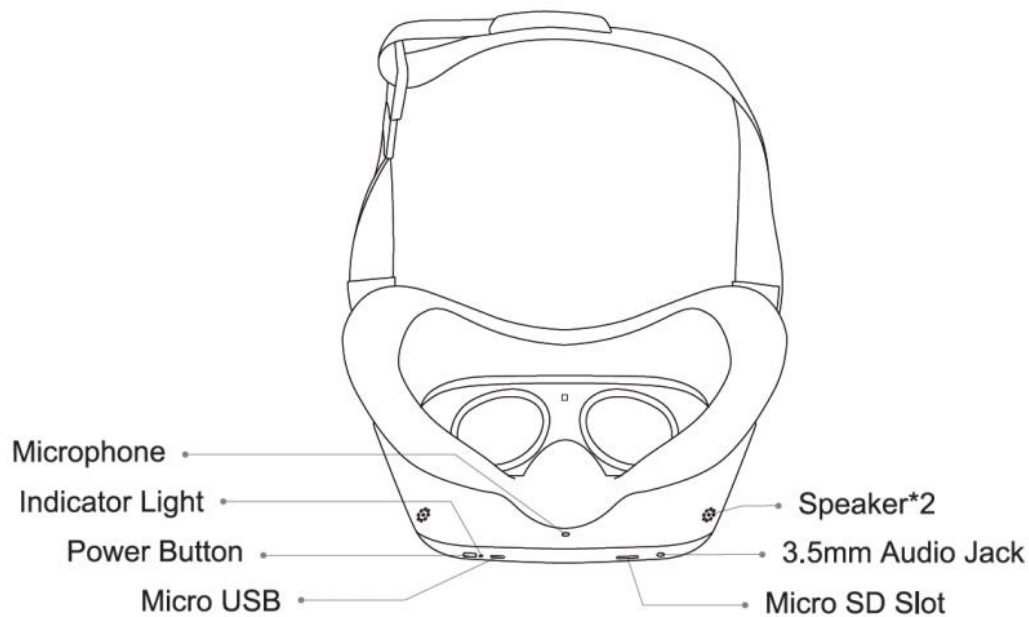
**Click** it to select, confirm or play;

**Hold** it while head tracking to **drag/scroll** the page up and down, left and right.

Home Button:

**Click** it to return to the home interface;

**Hold** it to change the **orientation** of the interface



激活  
转圈

Power Button:

Hold it to power on/off or **reboot** the device

Micro USB slot:

For charging cable or other Micro USB cable

MicroSD slot:

For external MicroSD card, Max. **256GB** capacity supported, **exFat** formatted highly suggested

3.5mm Audio Jack:

For earphone option, for better privacy.

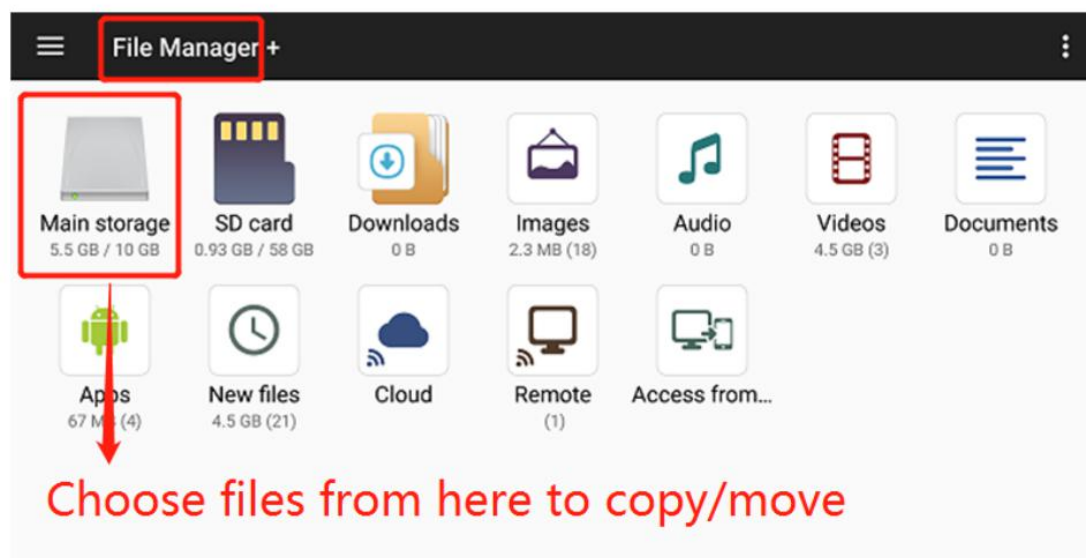
## Part 2. How to drag/scroll the screen

**Hold the Confirm Button** while do head tracking to drag/scroll the page up and down, left and right.

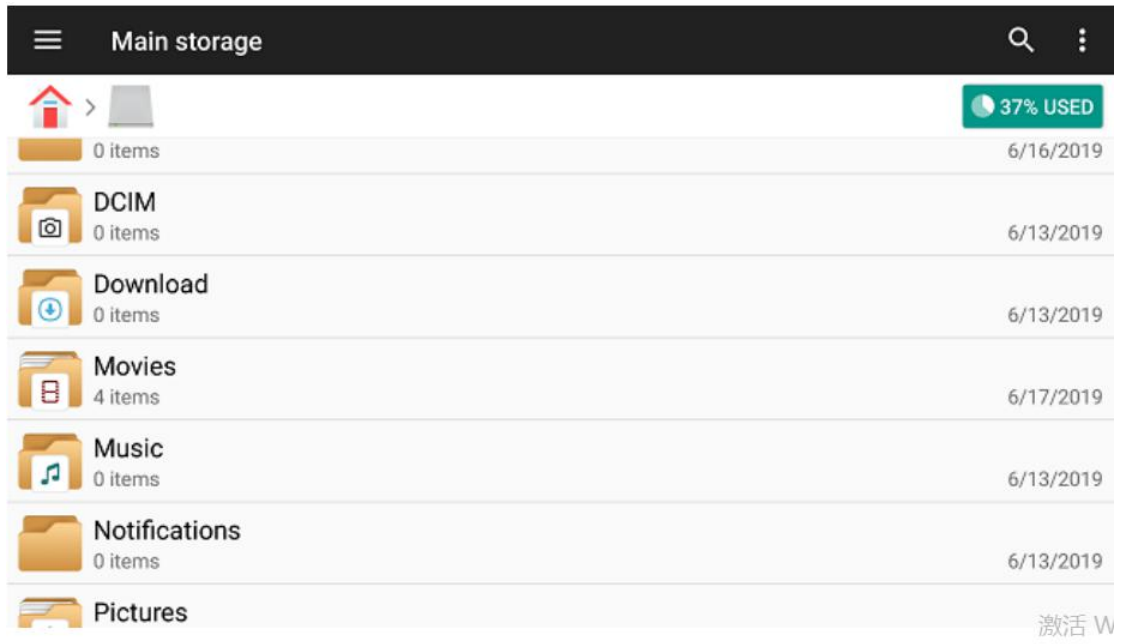
### Part 3. How to copy/move files from IRIS internal storage to MicroSD card

Step 1: Format your MicroSD card into exFat format.

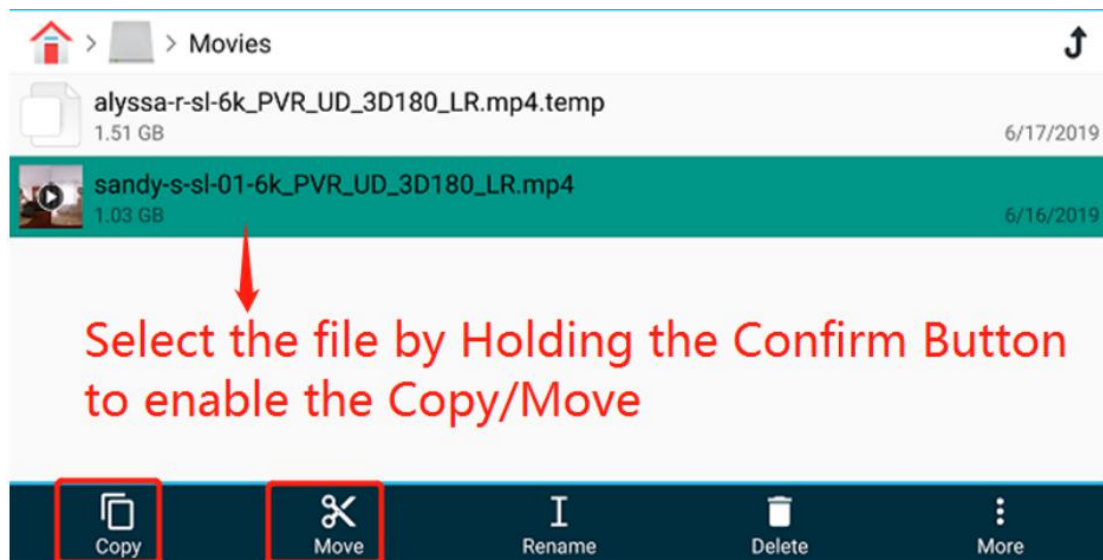
Step 2:



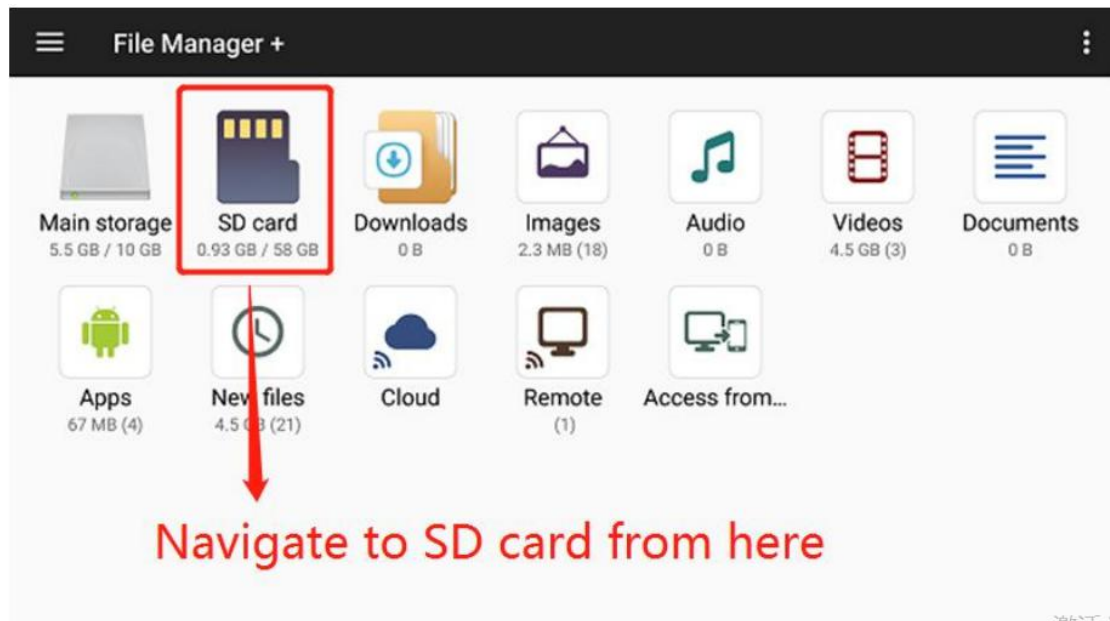
Step 3:



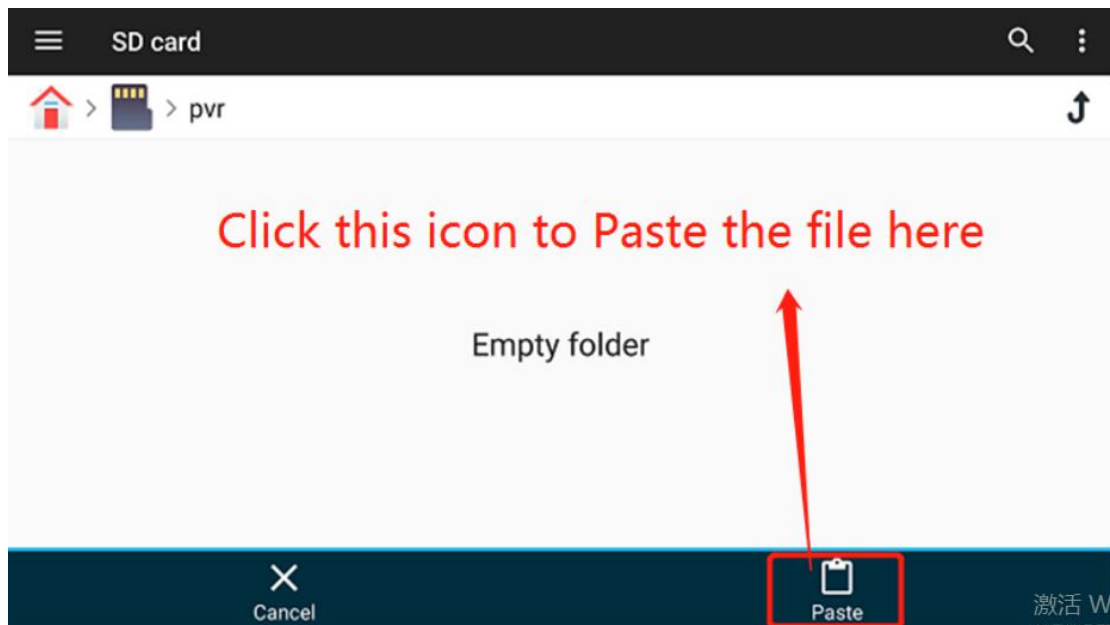
Step 4:



Step 5:



Step 6:



#### Part 4. How to share files stored in your PC to IRIS device and play them on IRIS

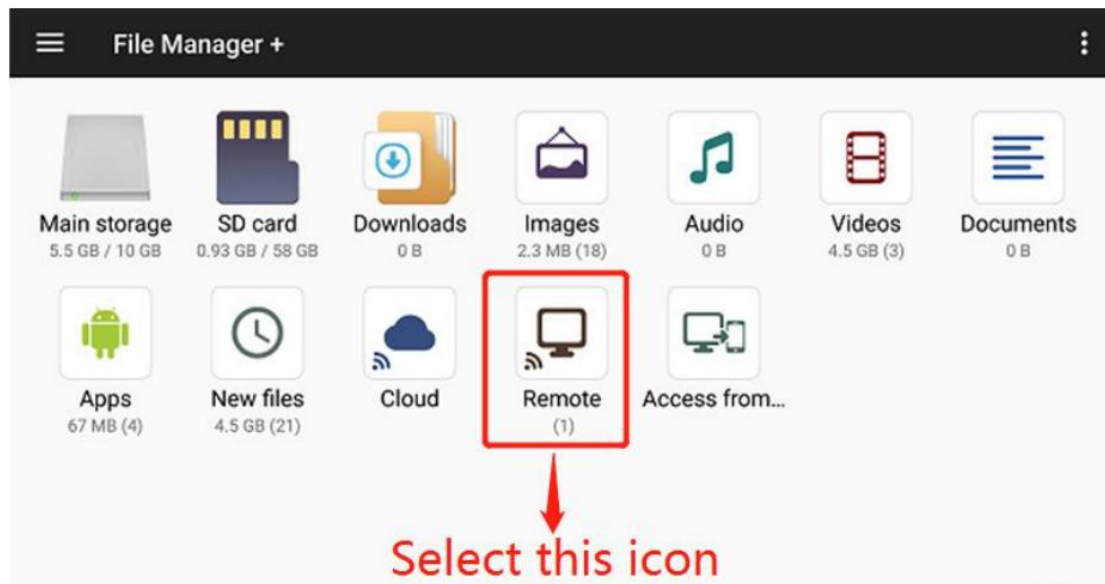
Step 1:

Share the folder where your videos are stored on your computer across local network. You can follow the guide from this

link: [https://www.youtube.com/watch?time\\_continue=13&v=oLFfN0kPyWk](https://www.youtube.com/watch?time_continue=13&v=oLFfN0kPyWk)

Step 2:

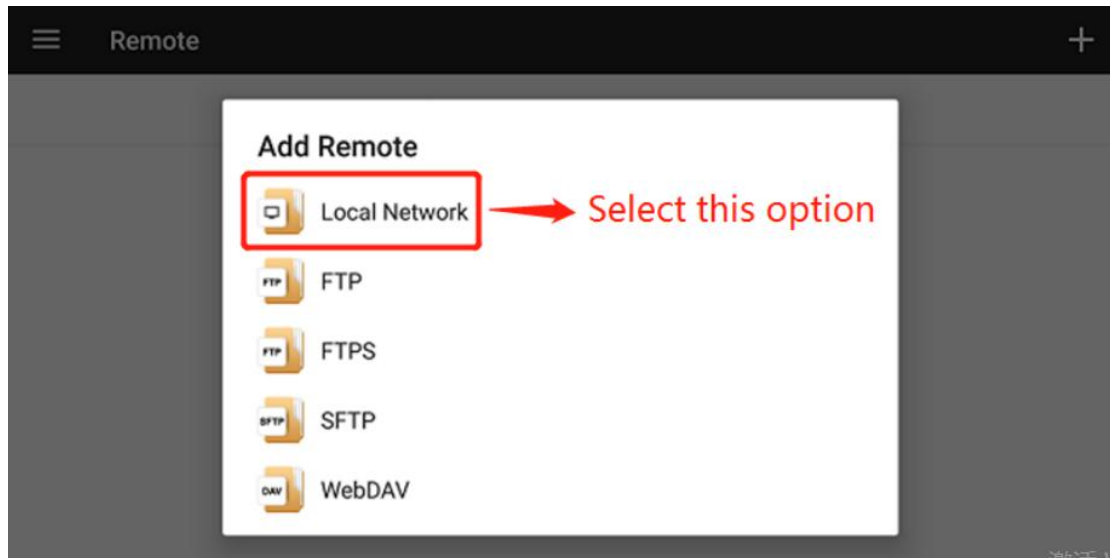
Go to File manager in your IRIS and select "Remote" icon.



Step 3:

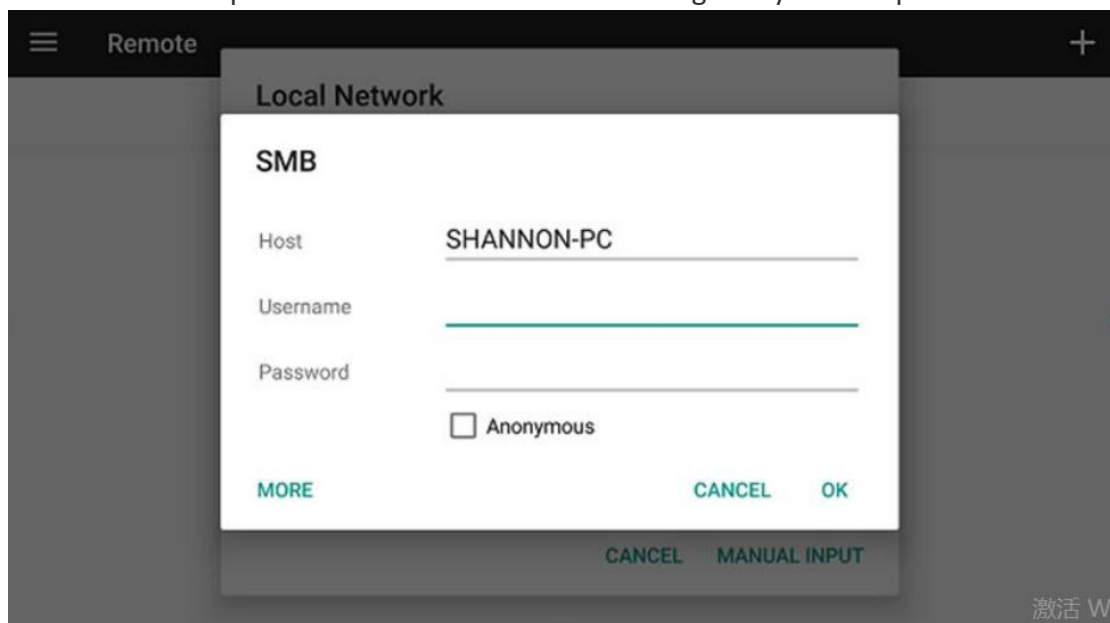


Step 4:



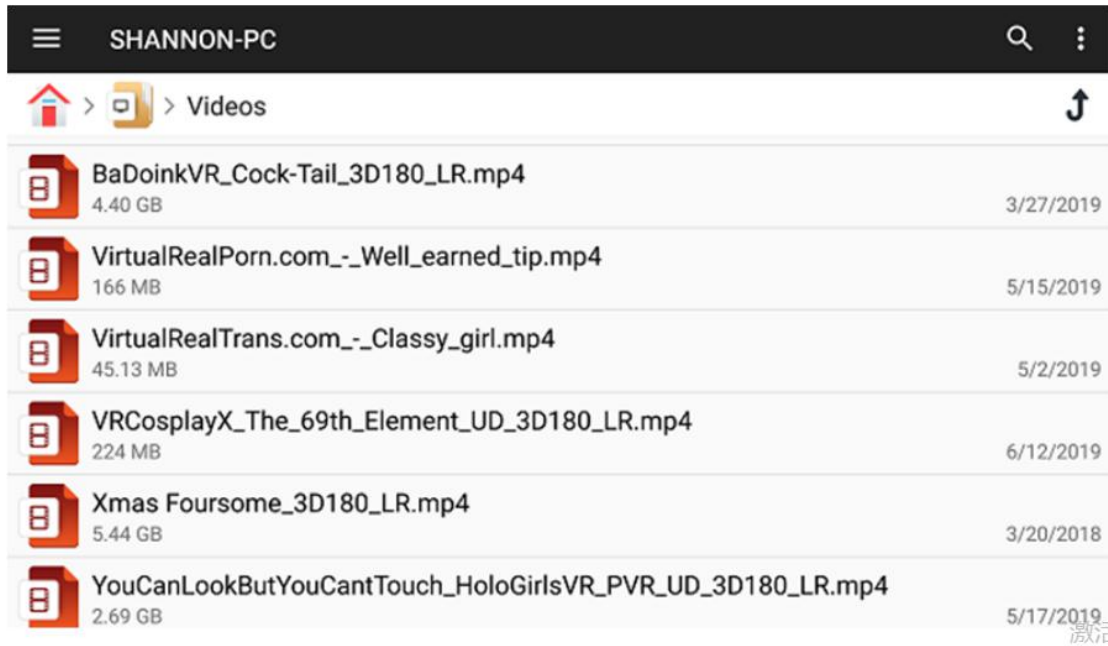
### Step 5:

The username & password will be the same as the login to your computer



### Step 6:

Once logged in you will see the shared folder, select it and play the videos in it directly from IRIS device.



## Part 5. How to install apps

### Step 1:

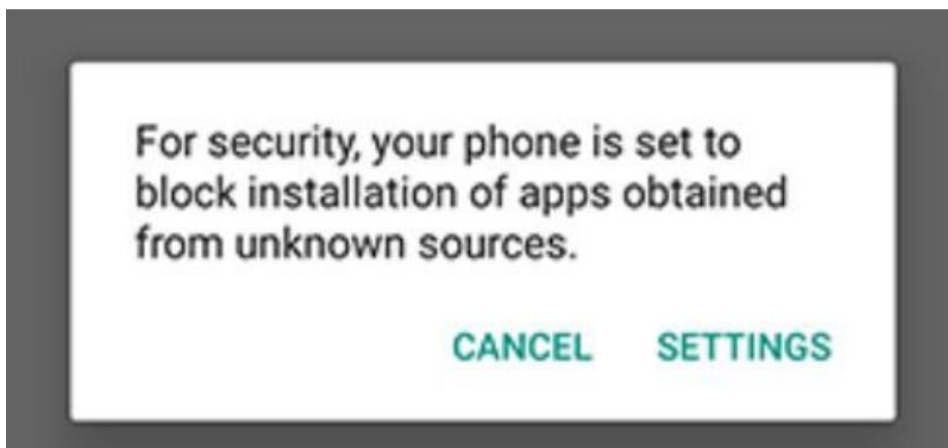
Click the '**App Store**' banner on the home screen of IRIS.

### Step 2:

Click on the App you want to download it. The download may take some time, and you can check the download status from **File Manager-->Downloads** .

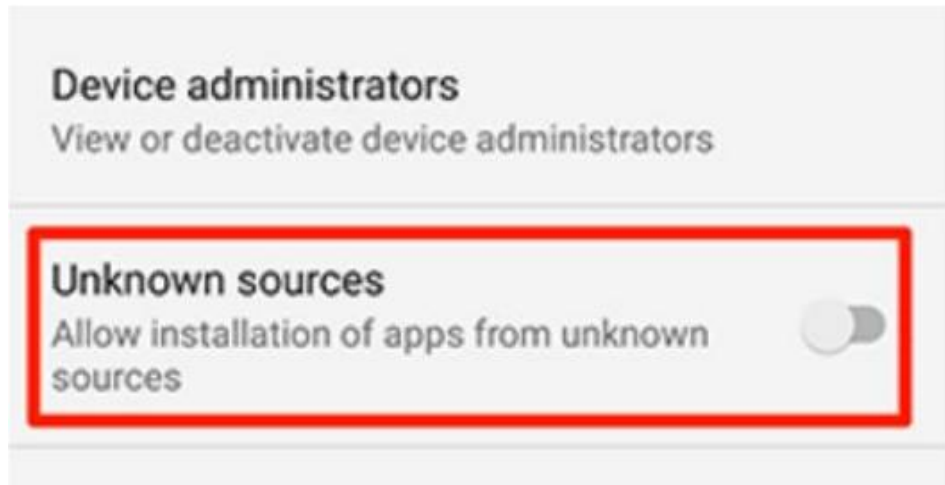
### Step 3:

Click on the App when its download is complete. You may be asked to give permission to install unknown resources apps for the first time(this windows will not appear next time).





Choose SETTINGS, then find the "**Unknown sources**" section, and turn it on to allow the installation.



Step 4:

In **File Manager** -->**Downloads** , click on the downloaded App to install it. Once installed, you can find this App ready in **Applications** section on home page. And you can run it now.

Visit our help center: <https://help.pvr.fun> to find more tutorials. For any question, please contact us via [contact@pvr.fun](mailto:contact@pvr.fun)