

Valentine's Release 2024



Cookie Decorating Collages

Hello and Happy Decorating!

Love is in the air! This document contains a collage with the decorating steps from the 2024 Valentine's Day Cutter release. I hope this is helpful as you decorate these cookies!

Each Collage shows a feature photo and then the step-by-step process photos. To create these collages, it requires hundreds of photos to be taken. As a result a few photos are missed. In that case a note is made on the collage page and a written instruction is provided.

I have provided a list of the icing colors used in each set's palette. Unless otherwise noted, royal icing colors are used in both a piping and flooding consistency. I used a tip #2 on the piping bags for outlines and details. If I used a different tip, I made a note on the collage page!



Retro Valentine's Cutter Set



Retro Valentine's Icing Colors: I used Chefmaster neon colors – neon pink, neon orange, neon yellow, neon green, neon blue, and neon purple – Bright White, and Black Diamond.



Retro Game Console



I used a template found on page 33. This cookie features a screen that is a wet-on-wet area, black icing is added first and while it is still wet, the gray is added. Be sure to use your flood icing for both colors. I used a cookie projector (a KopyKake) to add the graphic 'Be My Player 2'. I used tip #1.5 for the text. The font is called Electrolize. After the entire cookie is dry, I added the buttons using flood icing to keep them smooth and rounded.

Retro Flip Phone



I used a cookie projector (a KopyKake) to add the graphic 'U R G8'. I used tip #1.5 for the text. The font is called Electrolize.

Retro Click Pen



The colorful ink section is created using wet-on-wet. I add the rainbow lines using flood icing and then filled in the negative space with white flood icing. I used a cookie projector (a KopyKake) to add the graphic 'You're Just Write'. I used tip #1.5 for the text. I also used a tip #1.5 to add the white piped details on the pen. The font is called 'DTC PAPER SKATE'. I found this font on www.creativemarket.com.

Retro Camera



This cookie features a section that is a wet-on-wet area, white icing is added first, while it is still wet, the neon green is added. Be sure to use your flood icing for both colors. I added the buttons using flood icing to keep them smooth and rounded.

Astronaut Cutter Set



Astronaut and Rocket Icing Colors: Sky Blue, Fuschsia (2 shades), white, and yellow.

Astronaut



I used the astronaut template (found on the template) page and at the end of this guide) to trace head of the astronaut. I used tip #2 for the outlines and details.

Rocket



The outlines and details were done using tip #2.

Holiday Treats Cutter Set



Valentine Treats Icing Colors: Chefmaster Buckeye Brown, Christmas Red (in a light and dark shade), Bright White, and Black Diamond (an itty bitty dot to make gray icing).

Pretzel



I used the pretzel template (found on the template page and at the end of this guide) to trace the sections of the pretzel. I used the white coarse sugar to add the 'salt' to the pretzel.

Tall Cake Slice



I used a tip #13 star tip to add the texture on the top left of the slice.

Heart Ice Cream Cone



I used a tip #13 star tip to add the texture at the base of the ice cream scoop.

Chocolate Kiss



I created the silver wrapper using Chefmaster silver airbrush color. I added the text using the hugs, kisses, & valentine's wishes stencil to add the words. I used the stencil genie frame to hold the stencil in place.

Mini Holiday Treats Set



Valentine Treats Icing Colors: Chefmaster Buckeye Brown (20 sec), Christmas Red (in a light and dark shade), Bright White, and Black Diamond (an itty bitty dot to make gray icing).

Mini Heart Ice Cream Cone



I used a tip #13 star tip to add the texture at the base of the ice cream scoop.

Mini Chocolate Kiss



Mini Pretzel



I used the pretzel template (found on the template page and at the end of this guide) to trace the sections of the pretzel. I used the white coarse sugar to add the 'salt' to the pretzel.

Mini Tall Cake Slice



I used a tip #13 star tip to add the texture on the top left of the slice.

X O Cutter Set



X O Icing Colors: I used Sugar Art Colors Dusty Rose and Taupe in two shades each.

XO Cookies



I used the template for the heart in the 'O' found on the template page. I airbrushed the narrow stripes and tiny dots using Chefmaster silver airbrush color. I used a cookie projector (a KopyKake) to add the graphic 'hugs and kisses'. I used tip #1.5 for the text. The font is called Coffee Break.

Mini XO Cookies



X O Icing Colors: I used Sugar Art Colors Dusty Rose and Taupe in two shades each.

Mini XO Cookies



I used the template for the heart in the 'O' found on the template page. I airbrushed the narrow stripes and tiny dots using Chefmaster silver airbrush color. I used a cookie projector (a KopyKake) to add the graphic 'hugs and kisses'. I used tip #1.5 for the text. The font is called coffee break.

Dachshund and Balloon Cutter Set



Dachshund and Heart Balloon (Chefmaster): Buckeye Brown (2 shades), Rose Pink (2 shades), White (not in color wheel photo), and Black

Dachshund



This cookie features a wet-on-wet polka dot pattern. When the light pink base of the sweater is flooded, and while it is still wet, add the dark pink polka dots. Use flood icing for both!

Heart Balloon



The outlines and details were done using tip #2. To create the creases in the balloon, I piped short lines and then outlined the full cookie. I flooded close and around those lines with care as to not cover them up with the flood. I airbrushed the perimeter using a mixture of pearl and deep pink. This adds a little shine and a depth of color to the edges. I used a cookie projector to add the words Be Mine. The font is called 'DTC PAPER SKATE'. I found this font on www.creativemarket.com.

Latte and Wide Heart



Latte and Wide Heart Icing Colors: Chefmaster Black Diamond, Christmas Red (2 shades), and White.

Latte with Heart



I used a template found on page 33. I airbrush the Heart Sprinkle pattern onto the cup using a stencil and a mixture of pearl and deep pink airbrush color. I used a cookie projector (a KopyKake) to add the graphic 'Be Mine'. I used tip #1.5 for the text. The font is called 'DTC PAPER SKATE'. I found this font on www.creativemarket.com.

Wide Heart



MINI Latte and Heart Set



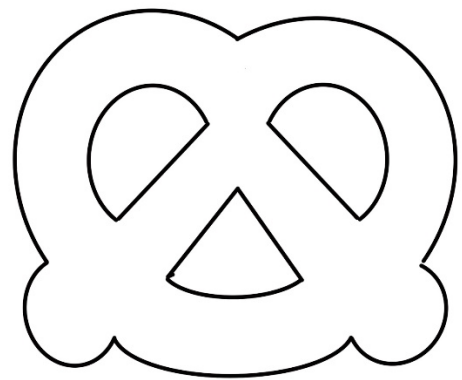
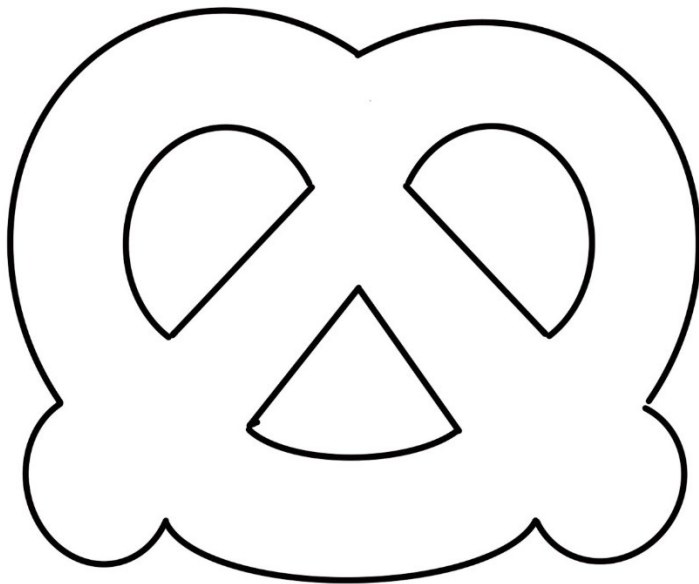
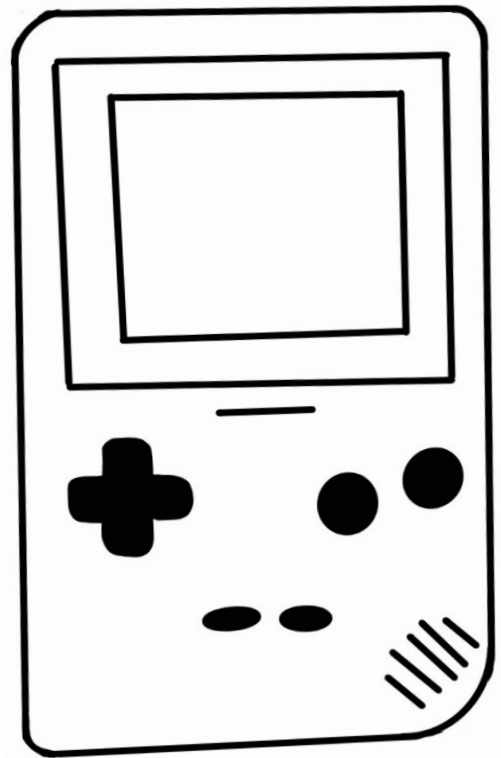
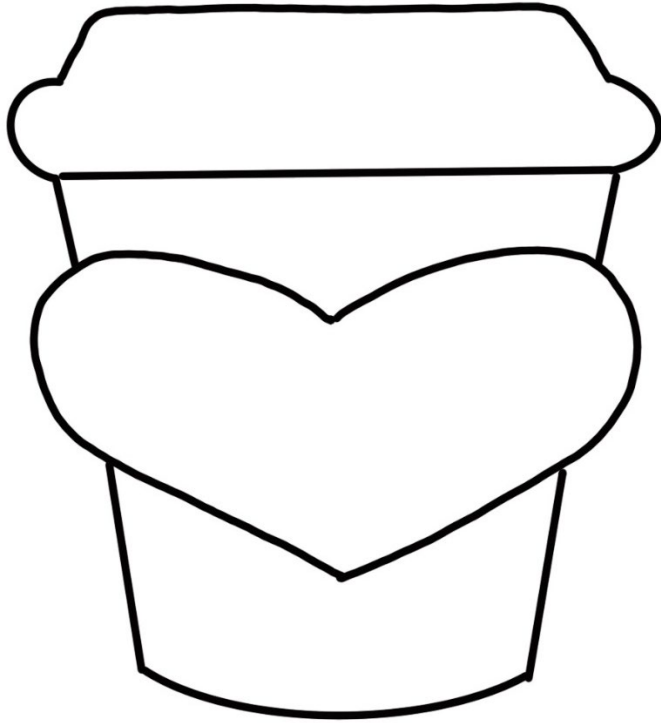
Latte and Wide Heart Icing Colors: Chefmaster Black Diamond, Christmas Red (2 shades), and White.

Mini Latte and Mini Wide Heart

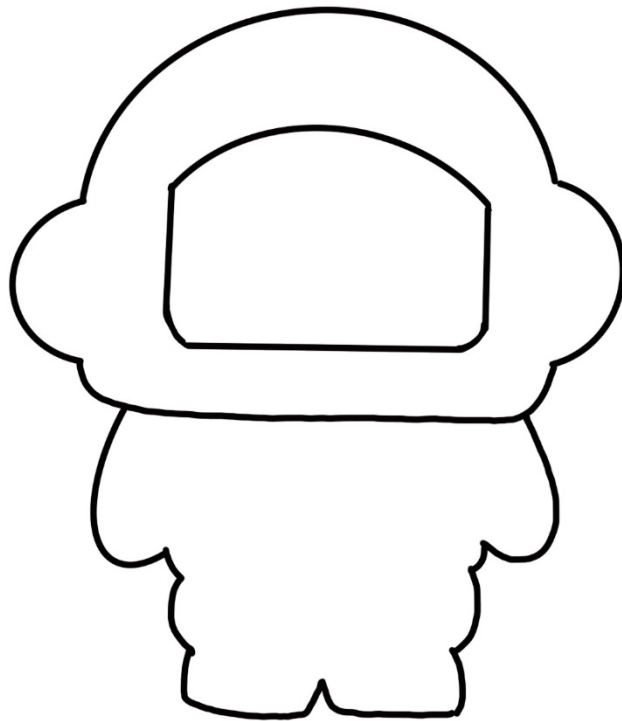


I used the flood icing to create these cookies to save time. I outlined and flooded the mini cookies with the same flood icing bag.

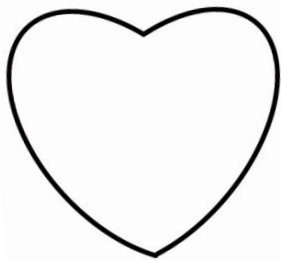
Cookie Templates and Graphics



Cookie Templates and Graphics



X and O graphics



hugs and kisses



hugs and kisses

Retro graphics

Be My
Player 2

YOU'RE JUST WRITE!

WE JUST CLICK!

YOU MAKE ME SMILE!

U R
G8

Be
Mine

Call Me,
Maybe?

Latte with Heart graphics

BE MINE

THANKS
A LATTE!

LOVE YOU
A LATTE!