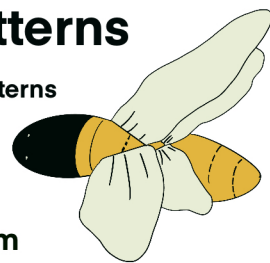


Insects chart sewing instructions and patterns



When sharing or selling charts, insects and other projects made with these patterns and ideas credit to EFI Little things must be given



Size of insects approximately 6-8 cm

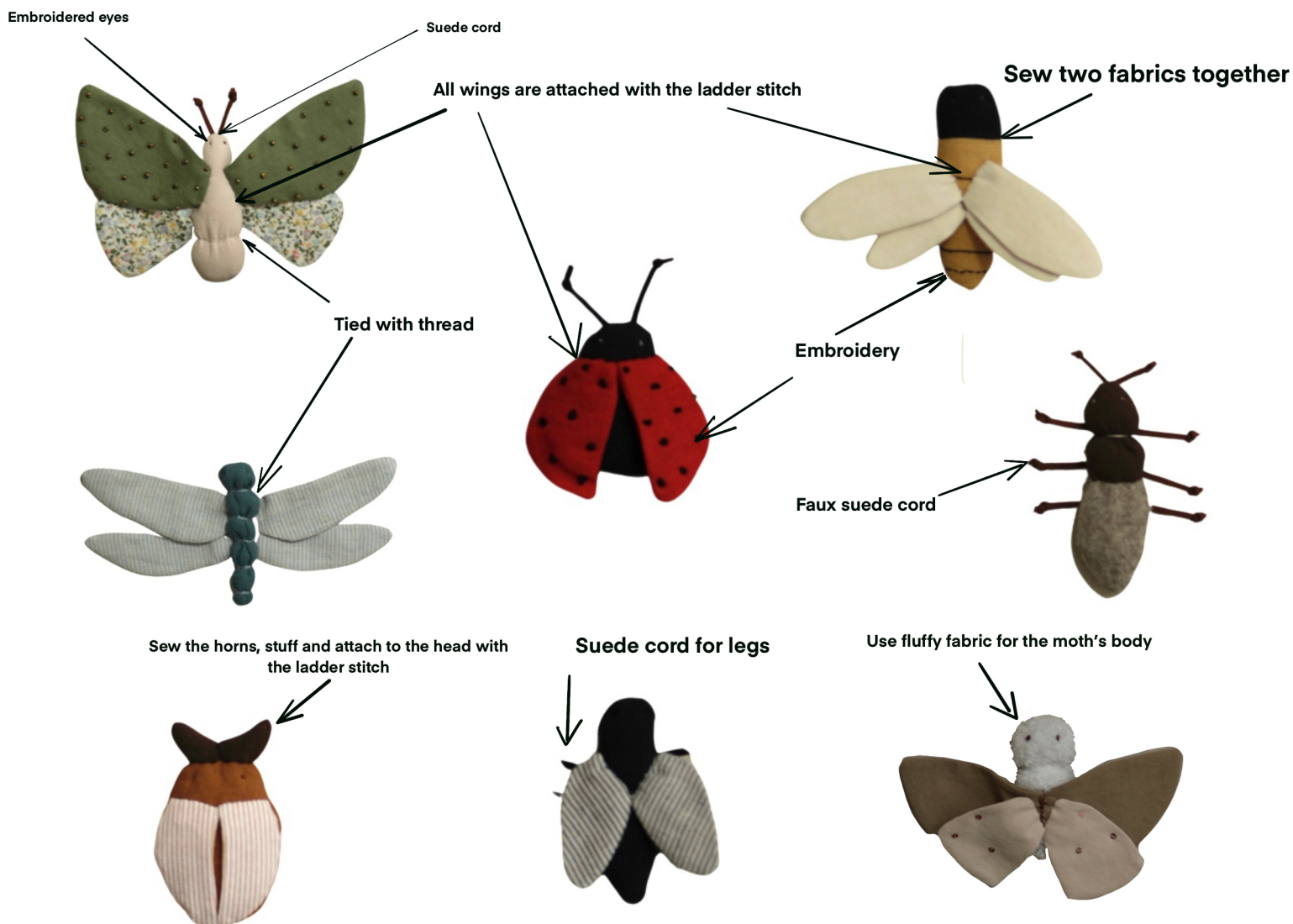
There is a type machine font signs attached if you wish to use them

For insects: Print a desired pattern sheet on A4 (letter size) paper, adjusting your printer's settings to actual size. Cut all the details. Trace bodies details on two layers of fabric and sew them together leaving an opening for stuffing. Turn, stuff, ladder stitch. Trace all wings details on two layers of fabric and sew them together. Cut, turn, iron well. Attach to a body with the ladder stitch.

For various body shapes use a strong top stitch thread to tighten the body at various places.

For legs and horns use cotton or faux suede cord.

For chart approximately 48cmx55cm, that fits 8 insects, take a piece of thick light linen fabric 51cmx58cm. Iron well and fold the side edges twice and trim them by sewing. The top and the bottom of this fold the way it will have enough space to fit a dowel in it. I use Ø2.5cm dowel. Insert both dowels and attach cord. Attach the insects: glue them with a fabric glue, sew them on, or use Velcro tape for a removing option.



I n s e c t s

C h a r t

Moth

Fly

Butterfly

Ant

Spider

Ladybird

Bumble bee

Dragon fly

Grasshopper

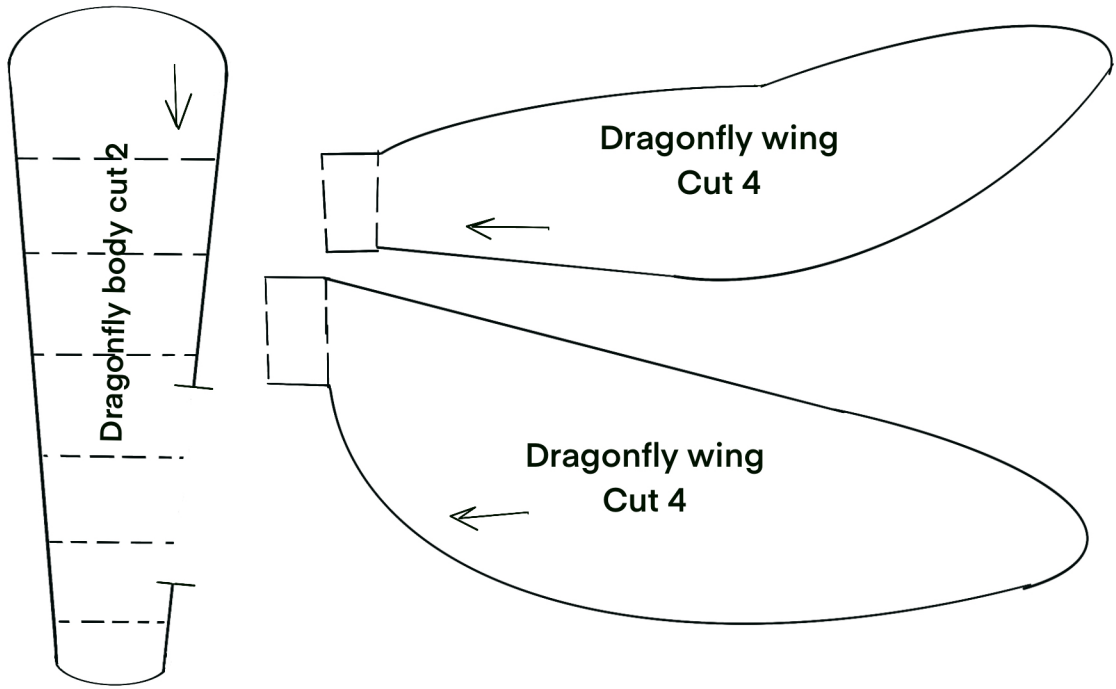
Bee

Meadow brown butterfly

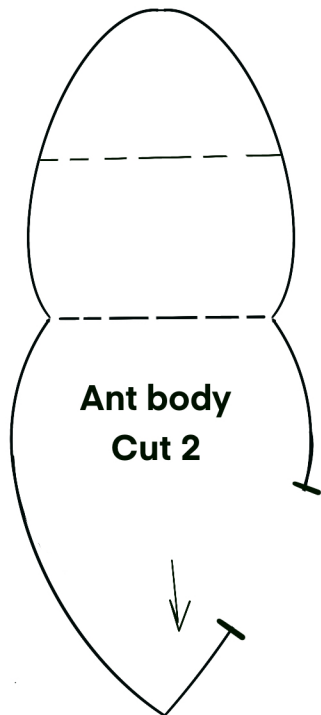
Bee

Brimstone butterfly

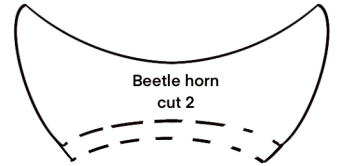
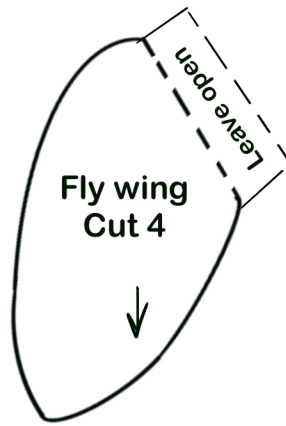
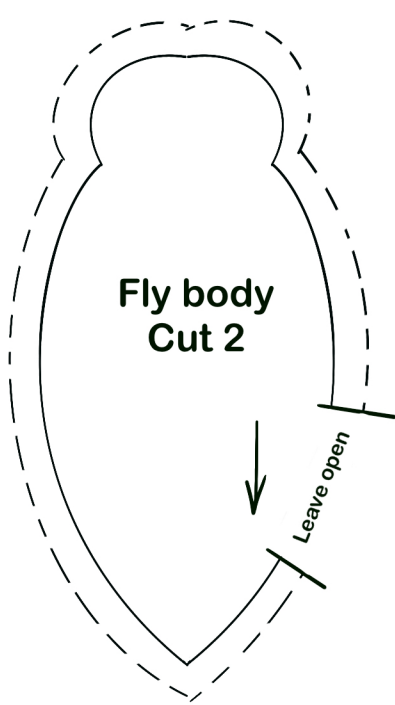
Dragonfly pattern



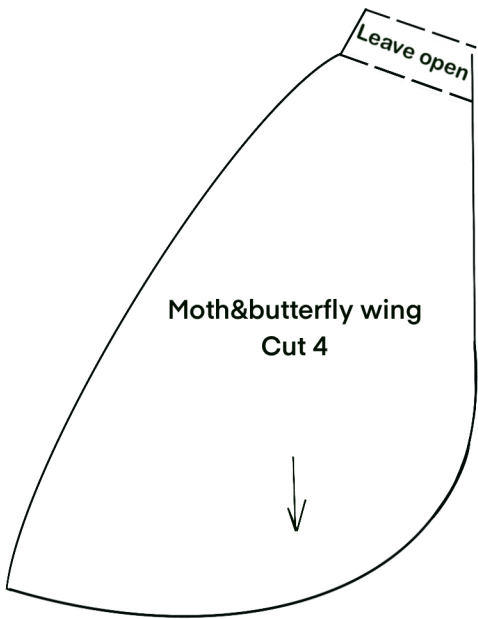
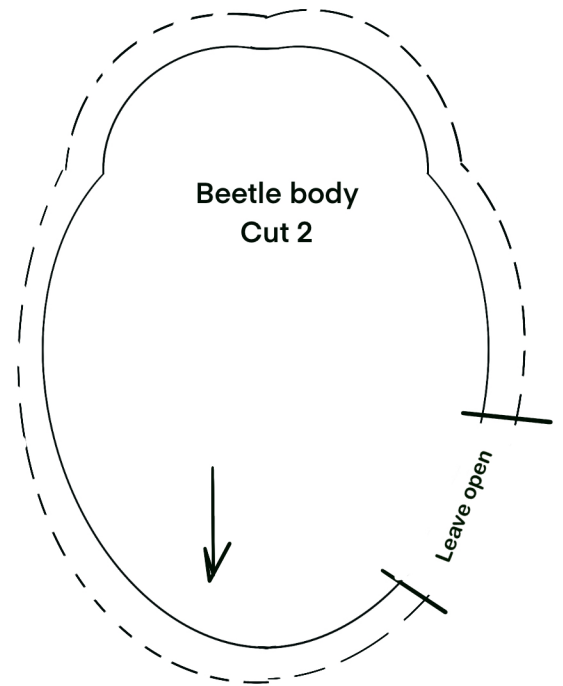
Ant pattern



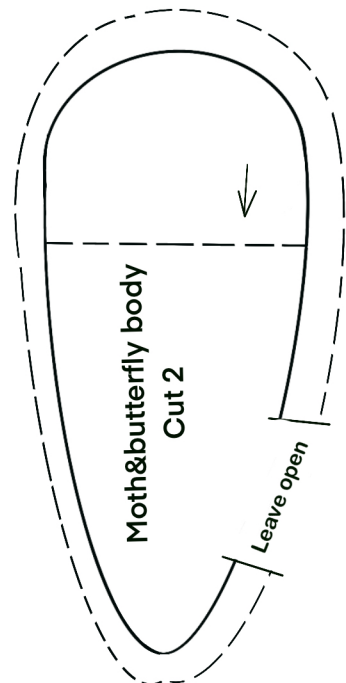
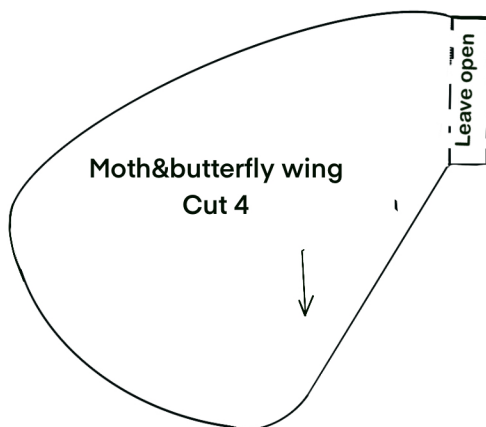
Fly pattern



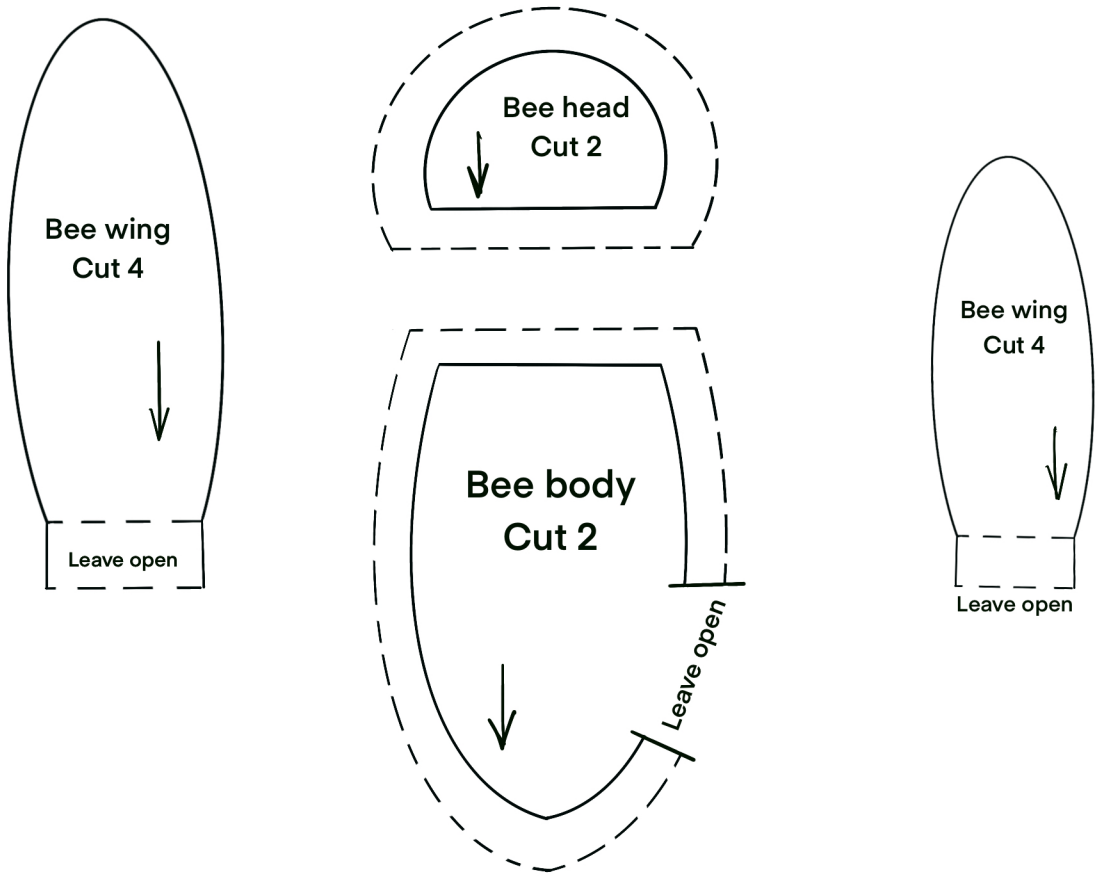
Beetle pattern



Moth and butterfly pattern



Bee pattern



Ladybird pattern

