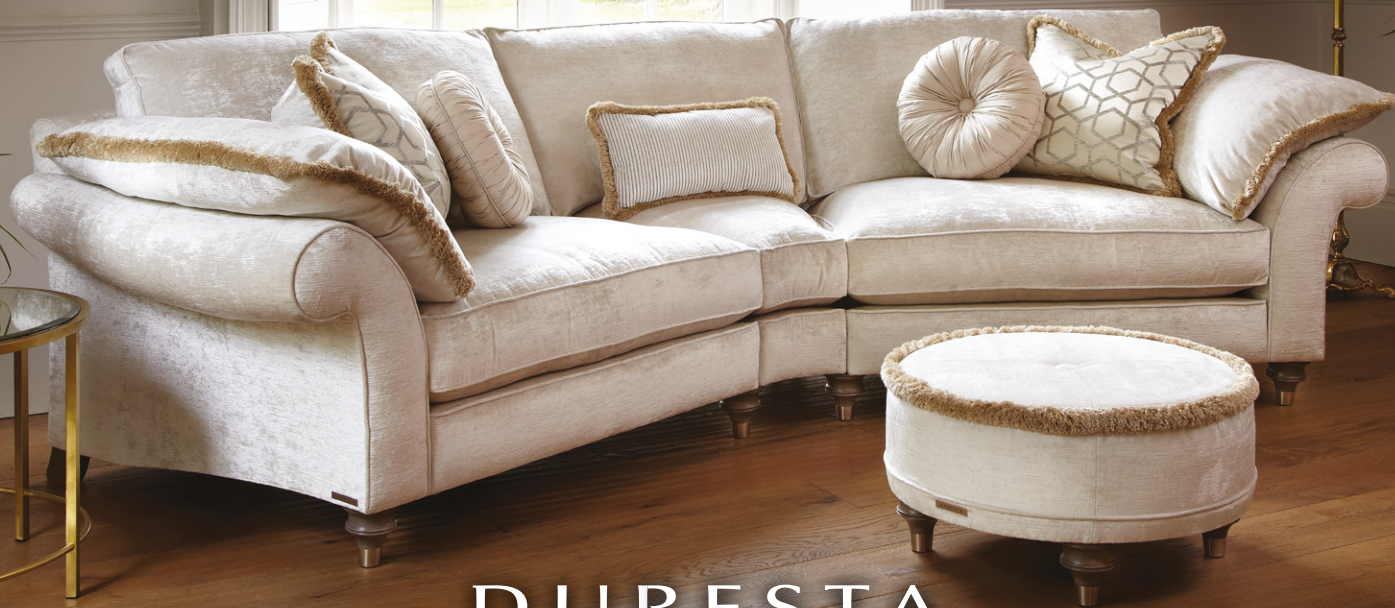


HARVARD

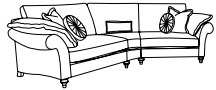


DURESTA

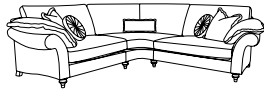
English Classics

HARVARD

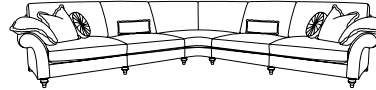
Image: Grand Split Sofa & Wedge Unit shown in Monarch Natural. Large scatters with ruche in Fitzgerald Champagne, lumbar with ruche in Kensington Champagne & pinwheel scatter in Kashmir Bone. Wooden legs in Driftwood with Steel finishers.



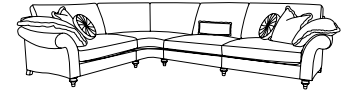
GRAND 4 SEATER SPLIT SOFA /
WEDGE UNIT
100H x 358W x 163D cm



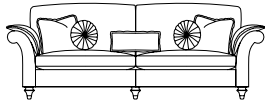
GRAND 4 SEATER SPLIT SOFA /
CORNER UNIT
100H x 275W x 275D cm



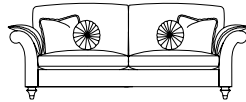
LHF LARGE END UNIT / CORNER UNIT /
RHF LARGE END UNIT
100H x 378W x 378D cm



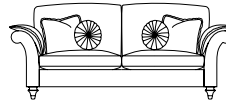
LHF SMALL END UNIT / CORNER UNIT /
RHF LARGE END UNIT
100H x 378W x 275D cm



GRAND 4 SEATER SPLIT SOFA
100H x 270W x 110D cm



LARGE 3 SEATER SOFA
100H x 245W x 110D cm



MEDIUM 2 SEATER SOFA
100H x 206W x 110D cm



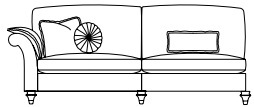
READING CHAIR
100H x 162W x 110D cm



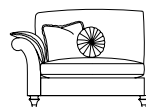
WING CHAIR
105H x 88W x 86D cm



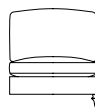
ROUND FOOTSTOOL
37H x 69W x 69D cm



LHF LARGE END UNIT
(RHF Available)
100H x 238W x 110D cm



LHF SMALL END UNIT
(RHF Available)
100H x 135W x 110D cm



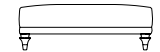
SINGLE ARMLESS UNIT
100H x 103W x 110D cm



CORNER UNIT
100H x 140W x 140D cm



WEDGE UNIT
100H x 101W x 120D cm



FOOTSTOOL
35H x 120W x 73D cm

STANDARD SPECIFICATIONS

- Available in soft cover only
- Frame construction - Hardwood frame, serpentine sprung seat with sprung edge and serpentine sprung back
- Seat filling - Fibre
- Back filling - Fibre
- Arm pad filling - Fibre
- Scatter and lumbar filling - Duck feather
- Pinwheel scatter filling - Fibre
- Leg finish - Driftwood with Steel finisher
- Removable legs

- Scatters -
 - Grand Split: 2 large with ruche, 2 pinwheel scatters & 1 lumbar with ruche;
 - Large & Medium: 2 large with ruche & 2 pinwheel scatters;
 - Large End Unit: 1 large with ruche, 1 pinwheel & 1 lumbar with ruche;
 - Reading Chair & Small End Unit: 1 large with ruche & 1 pinwheel scatter

OPTIONAL SPECIFICATIONS

- Seat filling - Supawrap*
- Wood finish - Umber with Steel finishers or Ebony with Steel finishers

*Denotes chargeable option

NB. All modular units must be connected and cannot be used as stand-alone items due to upholstery finish/visible fixings

Although every effort is made to ensure that dimensions are accurate, due to the handcrafted nature of our products, please allow a tolerance of +/- 3cm.



DURESTA.COM

HARVARD

FABRIC & SCATTER INFORMATION

Please refer to next page for fabric options

		INCLUSIVE SCATTERS*					
		BODY FABRIC	PIPING	RUCHE TRIM	LARGE SCATTERS <i>(With Ruche)</i>	LUMBAR <i>(With Ruche)</i>	PINWHEEL SCATTER
AVAILABLE ACROSS THE ENTIRE RANGE		Tribeca Champagne	Tribeca Champagne	Natural	Front - Fitzgerald Champagne Reverse - Tribeca Champagne	Front - Kensington Champagne Reverse - Tribeca Champagne	Kashmir Bone
		Tribeca Navy	Tribeca Champagne	Natural	Front - Fitzgerald Midnight Reverse - Tribeca Navy	Front - Kensington Midnight Reverse - Tribeca Navy	Kashmir Denim
		Tribeca Teal	Tribeca Teal	Dark Teal	Front - Fitzgerald Teal Reverse - Tribeca Teal	Front - Kensington Teal Reverse - Tribeca Teal	Kashmir Pacific
		Tribeca Charcoal	Tribeca Charcoal	Steel	Front - Fitzgerald Storm Reverse - Tribeca Charcoal	Front - Kensington Storm Reverse - Tribeca Charcoal	Kashmir Slate
		Monarch Natural <i>or</i> Kensington Champagne	Monarch Natural	Natural	Front - Fitzgerald Champagne Reverse - Monarch Natural	Front - Kensington Champagne Reverse - Monarch Natural	Kashmir Bone
		Monarch Anthracite <i>or</i> Kensington Midnight	Monarch Natural	Natural	Front - Fitzgerald Midnight Reverse - Monarch Anthracite	Front - Kensington Midnight Reverse - Monarch Anthracite	Kashmir Denim
		Monarch Teal <i>or</i> Kensington Teal	Monarch Teal	Dark Teal	Front - Fitzgerald Teal Reverse - Monarch Teal	Front - Kensington Teal Reverse - Monarch Teal	Kashmir Pacific
		Monarch Steel <i>or</i> Kensington Storm	Monarch Steel	Steel	Front - Fitzgerald Storm Reverse - Monarch Steel	Front - Kensington Storm Reverse - Monarch Steel	Kashmir Slate
		Monarch Mulberry <i>or</i> Kensington Mulberry	Monarch Mulberry	Mulberry	Front - Fitzgerald Mulberry Reverse - Monarch Mulberry	Front - Kensington Mulberry Reverse - Monarch Mulberry	Kashmir Amethyst
WING CHAIR & FOOTSOOL ONLY**	Fitzgerald Champagne	Monarch Natural	* Please refer to product specification for inclusive scatter quantities. Additional scatters are available in the prescribed options shown above. ** Not available on Round Footstool				
	Fitzgerald Midnight	Monarch Natural					
	Fitzgerald Teal	Monarch Teal					
	Fitzgerald Storm	Monarch Steel					
	Fitzgerald Mulberry	Monarch Mulberry					

RUCHE OPTIONS



NATURAL



DARK TEAL



STEEL



MULBERRY

LEG OPTIONS



DRIFTWOOD
Steel Finisher



EBONY
Steel Finisher



UMBER
Steel Finisher

HARVARD

FABRIC OPTIONS

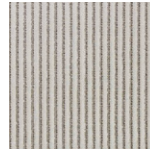
Please refer to table on previous page for fabric configurations



FITZGERALD
Champagne



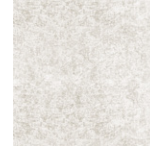
KASHMIR
Bone



KENSINGTON
Champagne



MONARCH
Natural



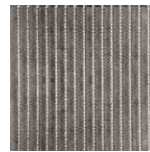
TRIBECA
Champagne



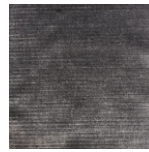
FITZGERALD
Storm



KASHMIR
Slate



KENSINGTON
Storm



MONARCH
Steel



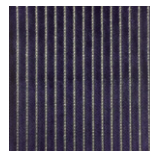
TRIBECA
Charcoal



FITZGERALD
Midnight



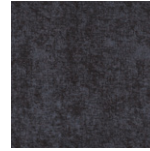
KASHMIR
Denim



KENSINGTON
Midnight



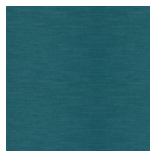
MONARCH
Anthracite



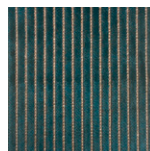
TRIBECA
Navy



FITZGERALD
Teal



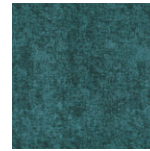
KASHMIR
Pacific



KENSINGTON
Teal



MONARCH
Teal



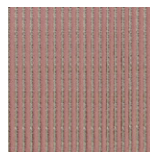
TRIBECA
Teal



FITZGERALD
Mulberry



KASHMIR
Amethyst



KENSINGTON
Mulberry



MONARCH
Mulberry