

16-GALLON WET/DRY

Our 16-Gallon Wet/Dry sets another standard in its class. In an industry with dozens of competitors we found it exciting to find so little innovation over the years. Our design team quickly found obvious improvements to enhance, reliability, and ease of use. Take a look at our highlighted improvements and features below, we're sure you'll be as excited as we were bringing this truly innovative product to market.



16-GALLON WET/DRY

Part No.	Machine
1	16-Gallon Wet / Dry with Standard Tool Kit
2	16-Gallon Wet / Dry with 27in Squeegee (no tool-kit)
3	16-Gallon Wet / Dry (Machine Only)
4	16-Gallon Wet / Dry w/ Toolkit & 27in Front Mount Squeegee
5	27 inch Squeegee Assembly with blades
6	Five Piece Tool Kit 54" s-bend aluminum wand, 14" scalloped tool, 14" nylon tool, 3" natural fiber dusting brush, 11" crevice tool.
7	Replacement 27 inch Squeegee Blade . Sold individually

TABLE OF CONTENTS

SAFETY PRECAUTIONS	1	OPERATIONS	4
SAFETY PRECAUTIONS	2	TROUBLE SHOOTING	5
DRY VACUUMING	2	PARTS BREAKDOWN	6
MAINTENANCE	3		

Industry First

Accordion Stretch Hose

Our new accordion stretch hose, eliminates the need to carry an extra hose. Our new hose expands as you need it and instantly retracts when you hold your hand over the end, another industry first.

Industry First

Mosquito's exclusive "Noise Diffusing Exhaust Manifold"

Suppresses high-frequency sound with its noise-canceling technology. Motor exhaust is directed through exhaust grates which redirects sound waves while gradually releasing exhaust. No back pressure is generated from the device as it scrubs 7dB and 9 sones from the final exhaust. This is an industry first and the continuation of our new generation of extractors from Mosquito.

Industry First

Ribbed Polyurethane Squeegee Blades



Our Ribbed Polyurethane Squeegee Blades are the industry's finest. Flexible and wear resistant for the perfect combination to remove liquids from the cleaning surface.



Ergonomic handle

USA

Automatic Vacuum Shut-off

Molded-In splash protection

Industry First Dry bag storage

2-Stage motor Most Powerful in its Class

Skid-Plate Pedal

Indestructible 10" wheels US Patent Pending

Industry First

Powder coated metal squeegee assembly with ribbed Polyurethane blades

Caster with brake

Motor cooling fan air inlet

Single latch access

Carry handle

Standard Tool Kit with Onboard Storage



10-Quart Dry bag



11" Crevice tool



3" Brush tool



14" Scalloped floor tool



50' Electrical cord



14" Squeegee floor tool



54" S-bend aluminum wand

Warranty - lifetime tank
3 Years parts & labor

Read this manual completely and understand the machine before operating or servicing it. This machine will provide excellent service. However, the best results will be obtained at minimum costs if:

- * The machine is operated with reasonable care.
- * The machine is maintained regularly - per the machine maintenance instructions provided.
- * The machine is maintained with manufacturer - supplied or equivalent parts.

Parts and supplies may be ordered online, by phone, by fax or by mail.

UNCRATING MACHINE: Carefully check carton for signs of damage. Report damages at once to carrier.

Please fill out at time of installation for future reference.


Model No. - _____

Serial No. - _____


Machine Options - _____

This machine is intended for commercial use. It is designed for wet/dry vacuuming in an indoor environment and is not constructed for any other use. Use only recommended accessory tools.


All operators must read, understand and practice the following safety precautions.


 **WARNING:** To warn of hazards or unsafe practices which could result in severe personal injury or death.

Failure to follow these warnings may result in: personal injury, electrocution, electrical shock, fire or explosion.

 **WARNING:** Do Not Use Flammable Liquids Or Operate Machine In Or Near Flammable Liquids, Vapors Or Combustible Dusts.

This machine is not equipped with an explosion proof motor. The electric motor will spark upon start up and during operation which could cause a flash fire or explosion if machine is used in an area where flammable vapors/liquids or combustible dusts are present.

 **WARNING:** Do Not Pick Up Flammable Or Toxic Materials, Burning Or Smoking Debris.

 **WARNING:** Do Not Operate With Damaged Power Cord. Do Not Modify Plug. Unplug Power Cord Before Servicing Machines.

If the supply cord is damaged or broken, it must be replaced by the manufacturer or it's service agent or a similarly qualified person in order to avoid a hazard.

 **WARNING:** Do Not Use Outdoors. Do Not Expose To Rain. Store Indoors.

WHEN USING MACHINE:

1. Do not operate machine:

- * With flammable liquids or near flammable vapors as an explosion or flash fire may occur.
- * Unless trained and authorized.
- * Unless operator manual is read and understood.
- * Unless cord is properly grounded.
- * With damaged cord or plug.
- * If not in proper operating condition.
- * In outdoor areas.
- * In standing water.
- * Without bag and/or filters in place.
- * With the use of an extension cord. (Fixed cord models)
- * With the use of additional extension cords (Detachable cord models). Only use manufacturer's extension cord equipped with machine which has proper capacity and is grounded.

2. FOR SAFETY:

- * Do not run machine over cord.
- * Do not pull machine by plug or cord.
- * Do not pull cord around sharp edges or corners.
- * Do not close doors on cord.
- * Do not unplug by pulling on cord.
- * Do not stretch cord.
- * Do not handle plug with wet hands.
- * Keep cord away from heated surfaces.
- * Do not pick up burning or smoking debris, such as cigarettes, matches or hot ashes.
- * Never allow children to play on or around.
- * Report machine damage or faulty operation immediately.

3. Before leaving or servicing machine:

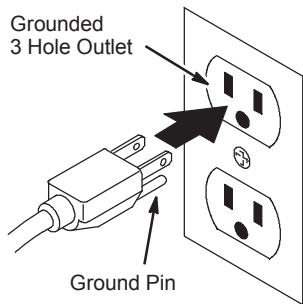
- * Turn machine off.
- * Unplug cord from wall outlet.

1. Check carton for signs of damage. Report damages to carrier immediately.

FOR SAFETY: Do not operate machine unless operator manual is read and understood.

Plug power cord into a grounded outlet

WARNING: Do Not Operate With Damaged Power Cord. Do Not Modify Plug. Unplug Power Cord Before Servicing Machine



(120V)

FOR SAFETY: Do not operate machine unless cord is properly grounded.

WARNING: Do Not Pick Up Flammable Or Toxic Materials, Burning Or Smoking Debris.

WARNING: Do Not Use Flammable Liquids Or Operate Machine In Or Near Flammable Liquids, Vapors Or Combustible Dusts.

ATTENTION: If you are vacuuming up liquids that may cause foaming inside recovery tank, use a quality defoamer chemical to eliminate the foam. Foam will NOT shut off automatic float and will damage vacuum motor. Damage due to foam is NOT covered by warranty.



Serial numbers / Warning label

DRY VACUUMING

WARNING: Do Not Pick Up Flammable Or Toxic Materials, Burning Or Smoking Debris.

NOTE: Always check to ensure a vacuum bag is installed. Replace bag if damaged or full.

1. Place a cloth filter bag into recovery tank and make sure that edge seals properly against rim of tank



Dry bag installed for vacuuming



Dry bag storage

2. Wash cloth filter bag by hand with a mild detergent as needed. Let bag dry thoroughly before replacing. This will restore your bag so you can maintain good suction performance.



WARNING: Unplug Power Cord Before Servicing Machine.

ATTENTION: Clogged filters or vacuum hose will cause vacuum motor to overheat.

MAINTENANCE

1. Once each month, spray ball bearings in front swivel caster with silicone spray.
2. Clean squeegee blades with a cloth whenever they start to leave streaks on the floor. Replace squeegee blades when they become worn.
3. Wipe machine housing with a cloth and mild detergent.
4. Inspect vacuum hose regularly for holes, loose cuffs or clogged debris.
5. Inspect power cord for damage, replace if damaged. Coil cord neatly after each use.



WARNING: Do Not Operate With Damaged Power Cord. Do Not Modify Plug. Unplug Power Cord Before Servicing Machines.

If the supply cord is damaged or broken, it must be replaced by the manufacturer or it's service agent or a similarly qualified person in order to avoid a hazard.

6. Monthly, check vacuum motor brushes for wear, replace brushes when 0.38 in / 10 mm or less in length.

FOR SAFETY: All repairs must be performed by a qualified service person.

FILTER CLEANING



Motor filter / Lift and clean daily

ATTACHING SQUEEGEE ASSEMBLY

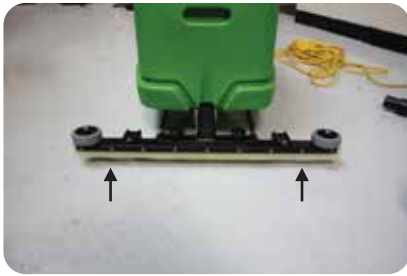


- 1) A. Loosen knobs
B. Slide on
C. Tighten
D. Verify squeegee assembly is level.

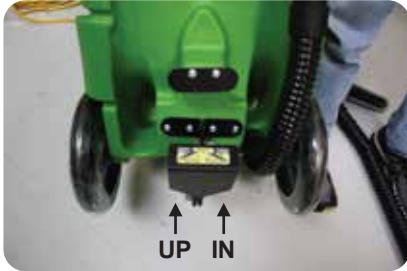


- 3) A. If squeegee is not level have an Associate hold handle of the wet dry.
B. Pull up on squeegee on lower side while holding down on the opposite end.
C. Release.
D. Repeat until level.

RAISING & LOWERING SQUEEGEE



2) Squeegee should be level.
If not see below.



Activating the squeegee
1) Push in for squeegee down
2) Push down for squeegee up

EXTENDING OR RETRACTING HOSE



Pull hose to extend to 10'



With vacuum on, cover end of hose to retract the vacuum hose automatically.

RECOVERY TANK FULL DRAINING RECOVERY TANK



When recovery tank is full, the motor will turn off and the light on the control will turn on.



Properly dispose of in a sewer.
Notice pinch area to control liquid flow.

1. Push machine to nearest floor drain.
2. Remove drain hose from holder and twist off knob and drain. Raise hose to stop flow of water.
3. When recovery tank is empty, open lid and rinse tank with clean water to prevent odor buildup.
4. Replace drain hose knob and return holder.

NOTE: Be certain drain hose knob is snug to prevent suction loss.

SKID PLATE



Skid plate for stair access

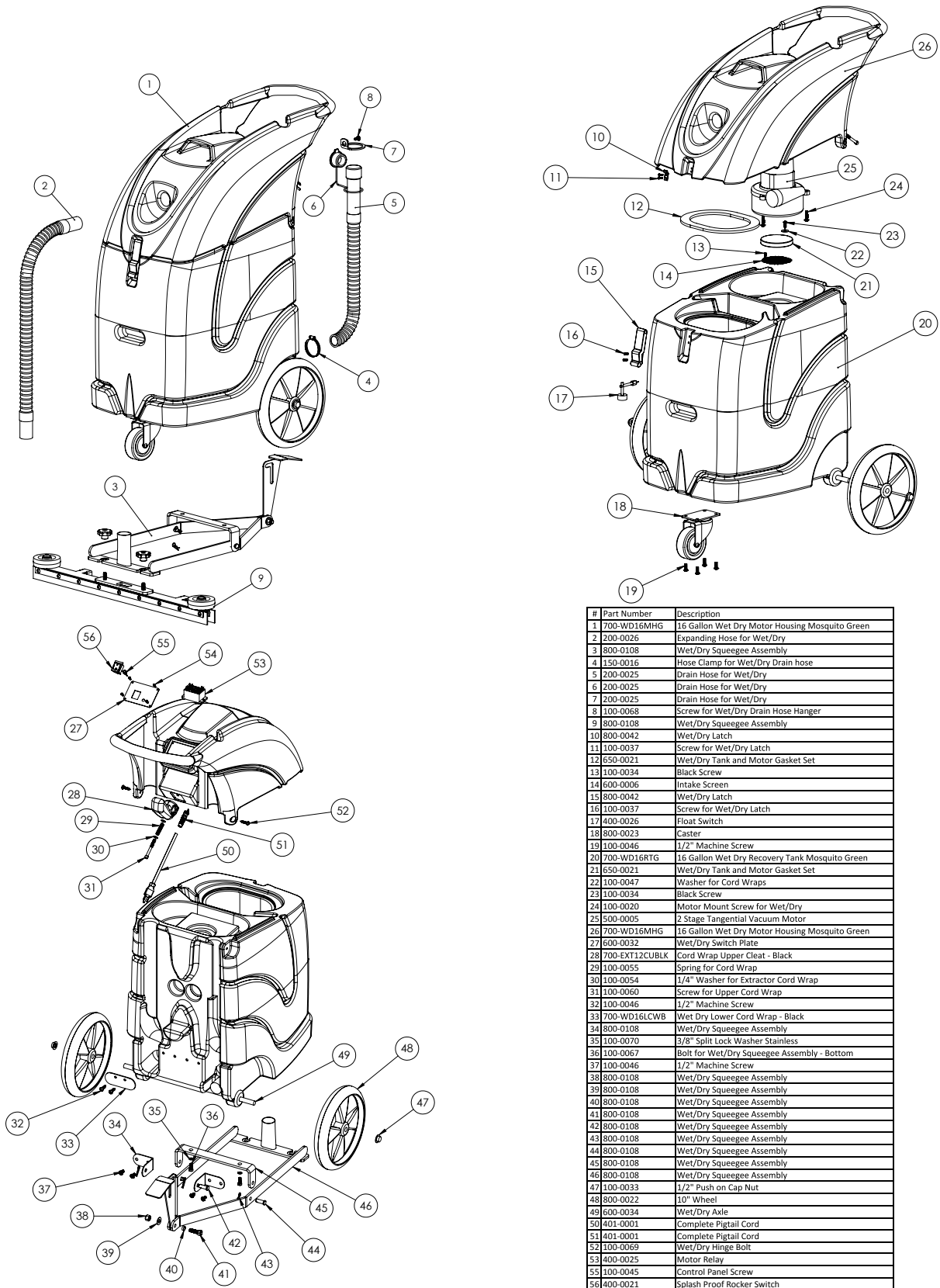
TROUBLE SHOOTING

PROBLEM	CAUSE	SOLUTION
Machine does not run.	ON/OFF switch is OFF.	Turn switch to ON.
	Vacuum not plugged to wall outlet.	Plug power cord to wall outlet.
	Faulty ON/OFF switch.	Contact Service Center.
	Faulty Power Cord	Contact Service Center.
	Faulty wiring.	Contact Service Center.
	Building circuit breaker tripped.	Reset circuit breaker.
	Vacuum motor overheated.	Find obstruction. Cool motor for 20 minutes.
	Faulty vacuum motor.	Contact Service Center.
Machine has little or no suction.	Hose is clogged	Clear hose.
	Holes in hose.	Replace hose.
	Intake is clogged.	Remove hose and clear obstruction.
	Drain hose knob is loose or open.	Tighten drain knob.
	Lid is not securely latched.	Latch both latches down securely.
	Worn gasket which is leaking air.	Inspect all gaskets, replace if necessary.
	Recovery tank or bag is full.	Empty tank or bag.
Squeegee has poor pick up.	Debris is wedged under squeegee blade.	Wipe off squeegee blade.
	Squeegee blades are worn.	Replace squeegee blades.
	Vacuum hose on squeegee mount is loose.	Push vacuum hose on securely.
	Recovery tank is full.	Empty tank.

SPECIFICATIONS

MODEL	12-6
LENGTH	29 in / 740 mm
WIDTH	15.5 in / 390 mm
WEIGHT	44 lb / 20kg
VACUUM MOTOR	8.5 amps, 1.3 hp, 120V, 980 watts 5.0 amps, 1.5 hp, 230V, 1242 watts
POWER CORD LENGTH	50 ft / 15 m
SQUEEGEE PATH WIDTH (OPTIONAL)	27 in / 690 mm,
WATER LIFT	89 in / 2620 mm
TANK CAPACITY	16 gal / 60.5 L
VACUUM BAG CAPACITY	10 qt
DECIBEL RATING AT OPERATOR'S EAR	80.5 dBA

16 GALLON WET/DRY PARTS BREAKDOWN



#	Part Number	Description
1	700-WD16MHG	16 Gallon Wet Dry Motor Housing Mosquito Green
2	200-0026	Expanding Hose for Wet/Dry
3	800-0108	Wet/Dry Squeegee Assembly
4	150-0016	Hose Clamp for Wet/Dry Drain hose
5	200-0025	Drain Hose for Wet/Dry
6	200-0025	Drain Hose for Wet/Dry
7	200-0025	Drain Hose for Wet/Dry
8	100-0068	Screw for Wet/Dry Drain Hose Hanger
9	800-0108	Wet/Dry Squeegee Assembly
10	800-0042	Wet/Dry Latch
11	100-0037	Screw for Wet/Dry Latch
12	650-0021	Wet/Dry Tank and Motor Gasket Set
13	100-0034	Black Screw
14	600-0006	Intake Screen
15	800-0042	Wet/Dry Latch
16	100-0037	Screw for Wet/Dry Latch
17	400-0026	Float Switch
18	800-0023	Caster
19	100-0046	1/2" Machine Screw
20	700-WD16RTG	16 Gallon Wet Dry Recovery Tank Mosquito Green
21	650-0021	Wet/Dry Tank and Motor Gasket Set
22	100-0047	Washer for Cord Wraps
23	100-0034	Black Screw
24	100-0020	Motor Mount Screw for Wet/Dry
25	500-0005	2 Stage Tangential Vacuum Motor
26	700-WD16MHG	16 Gallon Wet Dry Motor Housing Mosquito Green
27	600-0032	Wet/Dry Switch Plate
28	700-EXT12CUBLK	Cord Wrap Upper Cleat - Black
29	100-0055	Spring for Cord Wrap
30	100-0054	1/4" Washer for Extractor Cord Wrap
31	100-0060	Screw for Upper Cord Wrap
32	100-0046	1/2" Machine Screw
33	700-WD16LCWB	Wet Dry Lower Cord Wrap - Black
34	800-0108	Wet/Dry Squeegee Assembly
35	100-0070	3/8" Split Lock Washer Stainless
36	100-0067	Bolt for Wet/Dry Squeegee Assembly - Bottom
37	100-0046	1/2" Machine Screw
38	800-0108	Wet/Dry Squeegee Assembly
39	800-0108	Wet/Dry Squeegee Assembly
40	800-0108	Wet/Dry Squeegee Assembly
41	800-0108	Wet/Dry Squeegee Assembly
42	800-0108	Wet/Dry Squeegee Assembly
43	800-0108	Wet/Dry Squeegee Assembly
44	800-0108	Wet/Dry Squeegee Assembly
45	800-0108	Wet/Dry Squeegee Assembly
46	800-0108	Wet/Dry Squeegee Assembly
47	100-0033	1/2" Push on Cap Nut
48	800-0022	10" Wheel
49	600-0034	Wet/Dry Axle
50	401-0001	Complete Pigtail Cord
51	401-0001	Complete Pigtail Cord
52	100-0069	Wet/Dry Hinge Bolt
53	400-0025	Motor Relay
55	100-0045	Control Panel Screw
56	400-0021	Splash Proof Rocker Switch