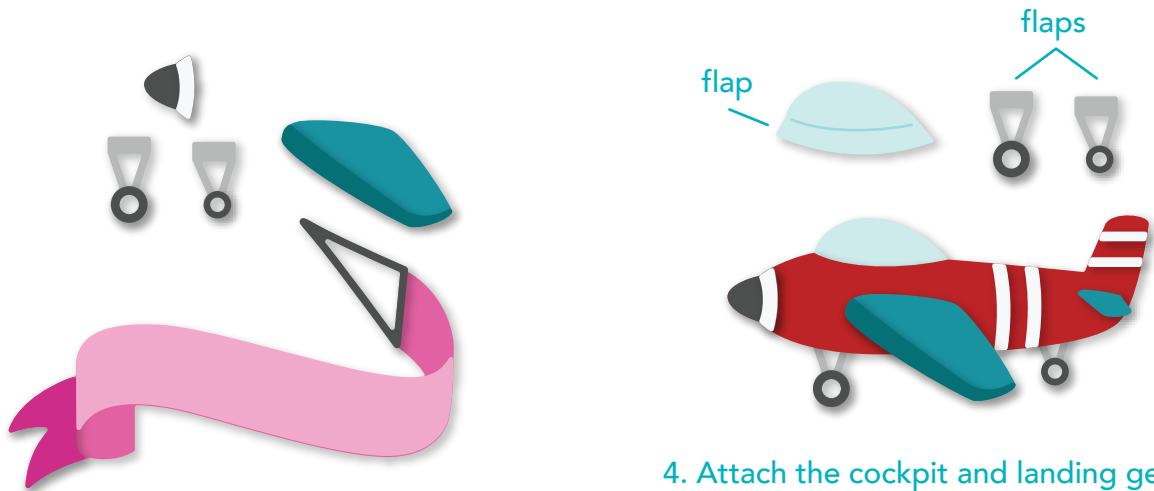


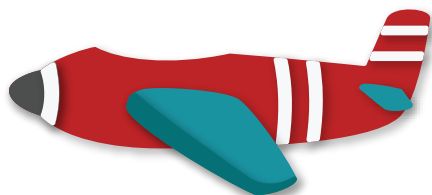


1. Cut all of the pieces out of desired card stock.

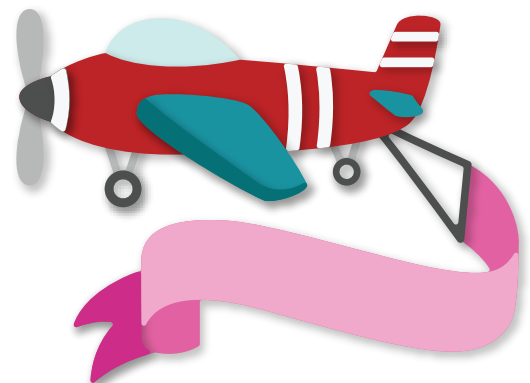


2. Attach the layer pieces to the plane nose, landing gear, large wing, and banner.

4. Attach the cockpit and landing gear pieces by adding adhesive to the flaps.



3. Use the emboss lines on the plane body to line up and attach the plane nose and wings. Attach the four stripe pieces (optional).



5. Attach the propeller and banner pieces to finish.