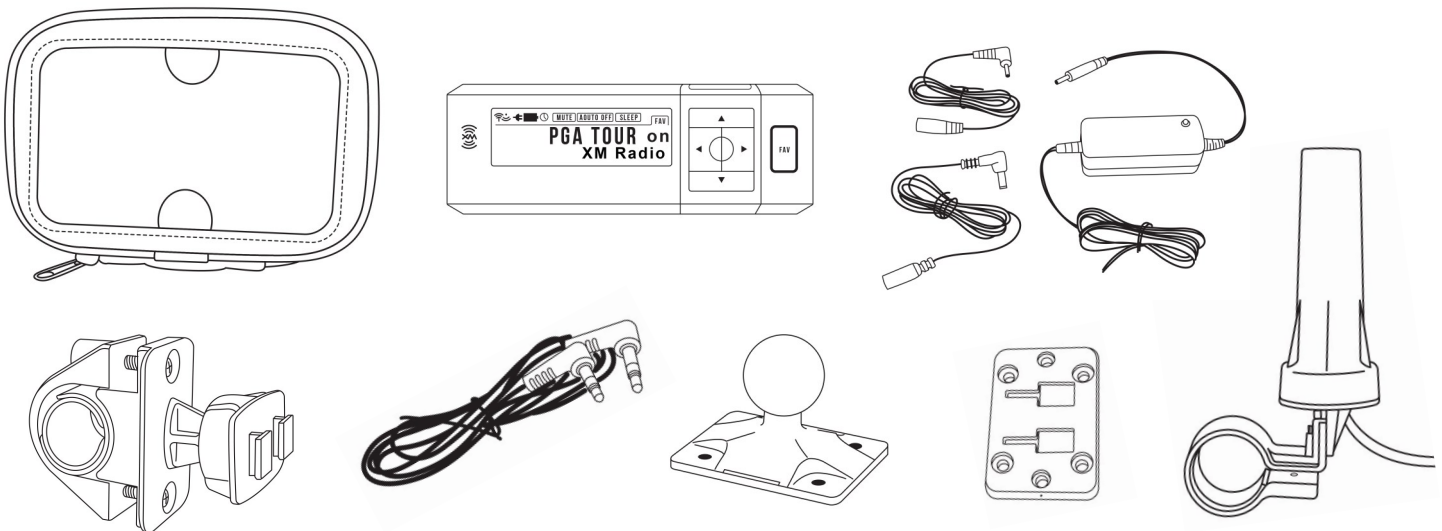


**Package Includes**

- (1) AGT XM Radio Receiver
- (1) 5 Volt Hardwired Power Adapter
- (1) Handlebar Clamp Mount
- (1) RAM Ball Mount Adapter (25 MM)
- (1) Weatherproof Protective Case
- (1) SiriusXM™ Radio Antenna
- (1) Auxiliary Cable
- (1) AMPS Plates and Screws

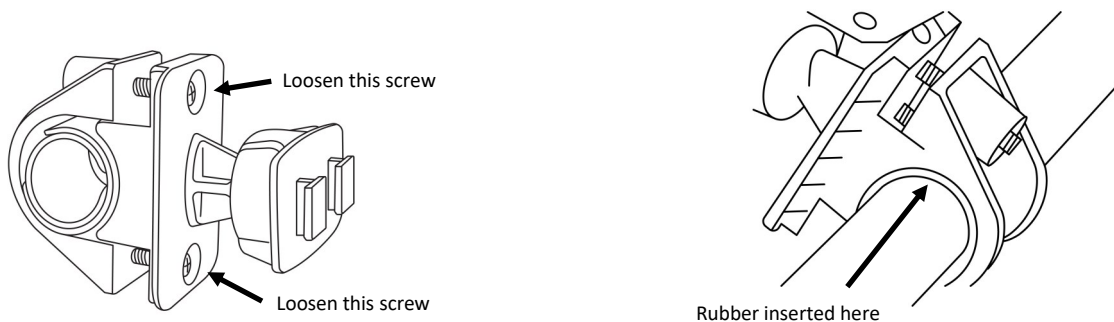


**Protective Case Installation Location**

Before getting started, it is important to select an installation location for the protective case with receiver and the strap mount antenna. It is also recommended to run the cables from your power source to the dock before hooking up the wires to ensure the cables will reach the dock inside the protective case.

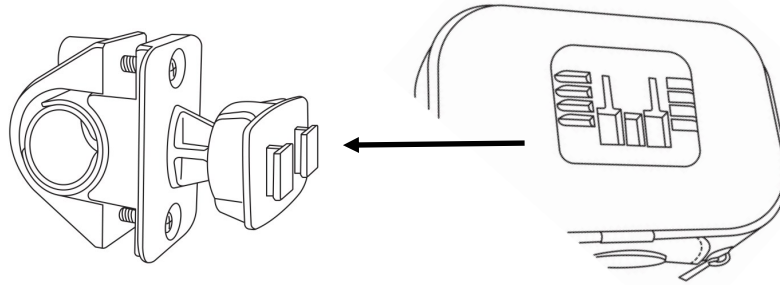
**Step 1 - Install Clamp Mount (or Strap Mount)**

After selecting the installation location for the protective case loosen the two screws on the handlebar clamp mount all the way out and separate it from the back side of the clamp mount. Place the clamp mount on the handlebars and line up the screw holes and tighten the screws to mount the clamp. Use the supplied rubber strips to increase the grip of the mount.



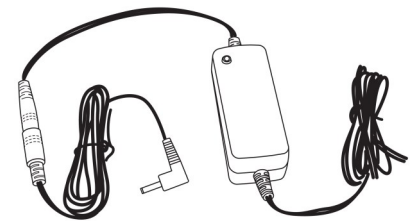
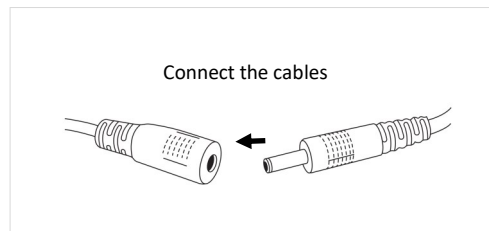
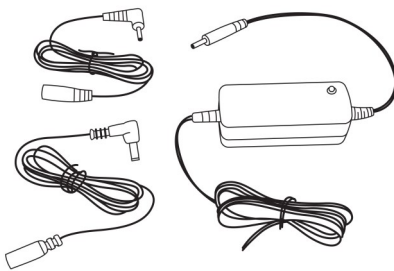
## Step 2 - Connect Protective Case to Mount

After the clamp mount is attached to the handlebar take the protective case and slide it over the dual T-notches on the back of the case with the T-notches on the handlebar clamp mount. Secure the mount by tightening the lock ring on the handlebar clamp (or strap) mount located just behind the T-notch adapter.



## Step 3 - Connect Power

Included in the package is a hardwired power adapter. Find a power source on the motorcycle, either in a fuse box or an auxiliary power source on the motorcycle. The hardwired power adapter comes with two interchangeable cables, one older Sirius and XM receivers and one for newer PowerConnect receivers. For this installation we will use the cable with the smaller tip on the end of the connector.



Adapter fully assembled

## Step 4 - Connect Audio

Included in the kit is an auxiliary cable for audio. Connect the auxiliary cable to the aux input on the motorcycle sound system, headset or other audio system. Run the auxiliary cable to the location of the mount and leave the cable loose. We will connect it to the docking cradle in step 6.

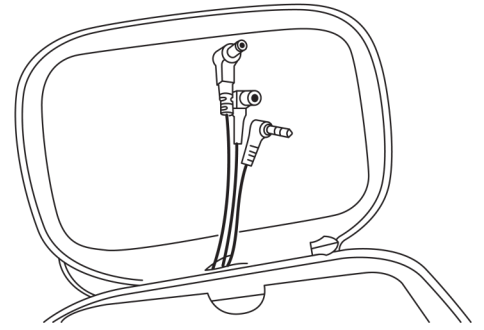


## Step 5 - Install Antenna

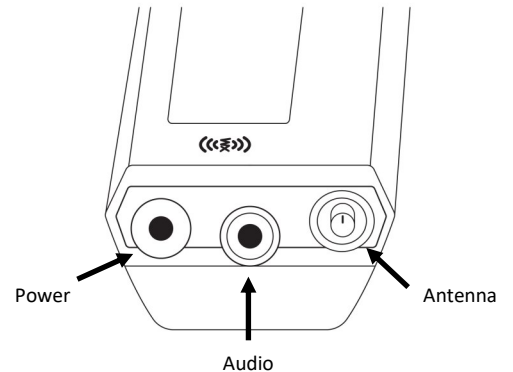
Each kit includes a satellite radio antenna and instructions for installing that specific antenna. Following the instructions included in the antenna kit packaging. Be sure to select an installation location as high up on the bike as possible with a clear view of the sky while riding. After the antenna is installed run the cable from the antenna to the location of the mount and case and leave the cable loose. We will connect it to the docking cradle in step 6.

## Step 6 - Connecting Receiver

After all cables have been run to the protective case feed the wires up through the bottom of the case shown in the image on the right. Pull enough cable through to allow for extra play in the wire incase a cable is pulled. If there is extra antenna wire it is recommended to wrap up the excess antenna wire inside the protective case.

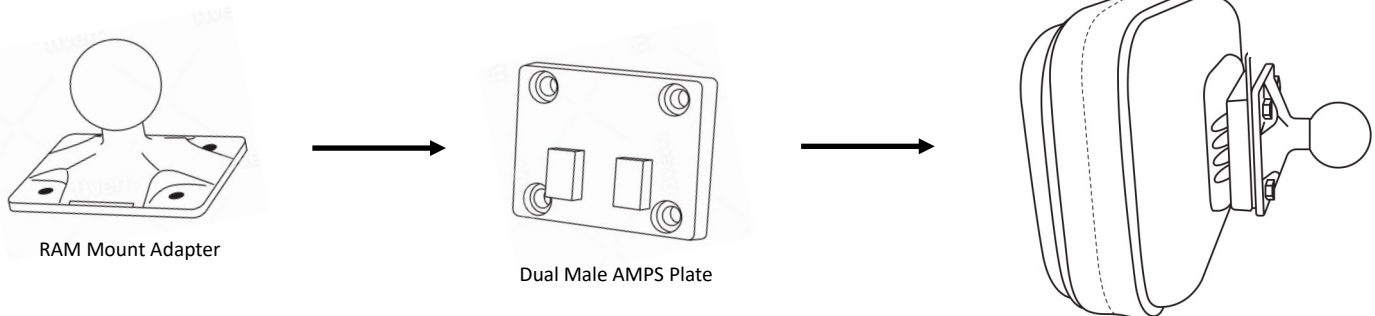


Once the cables have been run through the bottom of the protective case, connect each cable to the corresponding port on the receiver. Next, power on the receiver. The display should show the preview channel and audio should be coming out of the speakers. Be sure to have the motorcycle outside with a view of the southern sky before contacting SiriusXM to activate. You can activate the receiver by going online to [www.siriusxm.com](http://www.siriusxm.com) or by calling 1 (800) 852-9696.



## Appendix A - Installing the RAM Adapter Plate to Case (Optional)

Included in the kit is a 25mm RAM ball adapter plate. This allows the kit to be used with any 25mm RAM mount either connected to the protective case or directly to the SiriusXM™ docking cradle. To use the RAM adapter with the protective case connect the make AMPS plate (shown below) to the back of the RAM adapter plate with the supplied screws. Next, slide the dual T-notch plate onto the back of the case (as shown in the figure below)



Scan the QR code to download the AGT receiver user

