



SABRINA

DESIGNS CO.

ABOUT SABRINA

My Darling Jewelry Lover,

My journey began in 1978 in England with my husband David. With my eyes always on the latest fashion trends, I decided to join my husband's venture; opening two luxury jewelry shops in Hatton Garden, the heart of London's jewelry market. Watching and listening to the stylish European women, I developed a sophisticated sense of fine jewelry.

In 1994, we decided to move to New York with our four children and start a new life. My passion for fine jewelry carried me through uncertain times and led me to open Sabrina Designs, a collection of my own unique and trendy Gold and Diamond designs. We flourished with flattering success by reaching out to a new fashion consumer in the United States. In December 2001, my life would change forever when my beloved husband David unexpectedly passed away. The responsibilities of raising and providing for my children fell solely on my shoulders. With God's help and the love of my children, I was able to pass through these difficult times.

Today, I am a proud mother and grandmother. To see my own children, Linda, Sharon, Elaine and Matthew, joining me on this journey brings me tremendous joy. They too carry immense positive energy for life and for Sabrina Designs.

My collection is dedicated to all women who have gone through the ups and downs of life. I hope you too will find your inner love, strength and beauty through my designs.

Sincerely Yours,

Sabrina



Bracelets.....4
 Earrings.....7
 Necklaces.....12
 Rings.....15
 Fancy-Shape Jewelry.....17
 Color Jewelry.....18
 Aria Collection.....20
 Bracelets.....20
 Earrings.....21
 Necklaces.....22
 Rings.....23
 Charms & Zodaics.....24
 Initials.....25
 Italian Gold.....26
 Gemstone Inlay Collection...27



Prices shown in 14K G-H/SI.
 18K and platinum available.

BRACELETS



AB10146
0.97 ct. tw. | \$4,650
Eternity - 1.78 ct. tw. | \$6,450



SBJ14563
0.92 ct. tw. | \$7,125



BV41
0.25 ct. tw. | \$3,285



SB1037 - 0.30 ct. tw.
4mm | \$4,065
5mm | \$5,250

BRACELETS

SB753844
2.3 ct. tw. | \$10,485
4.9 ct. tw. | \$21,045



CBR604
0.10 ct. tw. | \$1,020
0.50 ct. tw. | \$2,820

CBR614
0.46 ct. tw. | \$2,415



DBL96522
4.96 ct. tw. | \$19,650



CBR548
2.90 ct. tw. | \$11,550



SB75326A
5.41 ct. tw. | \$21,000



CBR381
1.16 ct. tw. | \$7,290

See more at sabrinausa.com
Prices subject to change

BRACELETS

flexible

CB309
2.25 ct. tw. | \$13,680



BV26
2.85 ct. tw. | \$11,700



BV17
3.20 ct. tw. | \$11,925



BV28
0.20 ct. tw. | \$2,205



CB333
0.37 ct. tw. | \$2,985



BV13
1.0 ct. tw. | \$4,350



BV24
0.76 ct. tw. | \$4,050



BV29
0.45 ct. tw. | \$3,180



CB247SA
1.18 ct. tw. | \$3,600



CB325RU
1.66 ct. tw. | \$4,260



CB247EM
1.10 ct. tw. | \$2,985



BV34
0.50 ct. tw. | \$3,045



CB300 - Eternity
1.51 ct. tw. | \$5,685
2.09 ct. tw. | \$7,350
2.54 ct. tw. | \$8,355



CB247 - Halfway
0.98 ct. tw. | \$4,230
1.47 ct. tw. | \$5,400
1.86 ct. tw. | \$6,900



EARRINGS



DEF8942R03
1.27 ct. tw. | \$4,275



SEJ9368
0.31 ct. tw. | \$1,245
0.98 ct. tw. | \$3,420



DEG7800
1.03 ct. tw. | \$4,740



SE60699 - 1.25"
0.67 ct. tw. | \$3,975



SE75390B - 2"
4.10 ct. tw. | \$13,605



SE75597 - 1.75"
2.55 ct. tw. | \$9,810



SE66033
4.86 ct. tw. | \$23,985
See image, two ways to wear

See more at sabrinausa.com
Prices subject to change

EARRINGS

round



DE15001
 0.75" | 0.21 ct. tw. | \$1,560
 1.00" | 0.31 ct. tw. | \$2,130
 1.25" | 0.42 ct. tw. | \$2,670



DE15004
 1.50" | 0.53 ct. tw. | \$3,255
 1.75" | 0.58 ct. tw. | \$3,810
 2.00" | 0.70 ct. tw. | \$4,485



DE15007
 2.25" | 0.81 ct. tw. | \$4,845
 2.50" | 0.95 ct. tw. | \$5,685

pear shaped



DE13146
 1.00" | 0.26 ct. tw. | \$1,860
 1.25" | 0.37 ct. tw. | \$2,550



CER242
 1.50" | 0.43 ct. tw. | \$2,625
 1.75" | 0.52 ct. tw. | \$3,030



DE13116
 2.00" | 0.63 ct. tw. | \$3,780
 2.50" | 0.77 ct. tw. | \$4,755



DE13049 - Round
 1.00" | 1.00 ct. tw. | \$4,095
 1.25" | 1.42 ct. tw. | \$6,405
 1.50" | 1.74 ct. tw. | \$7,200
 1.75" | 2.13 ct. tw. | \$9,435

DEF7117 - Pear Shaped
 0.75" | 0.65 ct. tw. | \$2,955
 1.25" | 0.90 ct. tw. | \$3,885
 1.50" | 1.30 ct. tw. | \$4,370
 1.75" | 1.50 ct. tw. | \$6,885

EARRINGS



CER426 - 0.60"
0.51 ct. tw. | \$2,055



CER1265 - 0.65"
0.31 ct. tw. | \$2,175



CER1145 - 0.60"
0.84 ct. tw. | \$2,745



CER327 - 0.70"
1.00 ct. tw. | \$3,660



CER1085 - 0.70"
0.45 ct. tw. | \$2,250



DEJ3012
0.75" | 0.49 ct. tw. | \$2,085
1.00" | 1.10 ct. tw. | \$4,260
1.25" | 1.40 ct. tw. | \$4,995



EV17
1.00" | 1.0 ct. tw. | \$4,035
1.00" | 1.9 ct. tw. | \$5,505



EV15
1.50" | 2.3 ct. tw. | \$7,050
2.00" | 3.6 ct. tw. | \$10,485
2.25" | 4.0 ct. tw. | \$12,105

oval



EARRINGS



CER847 - 11mm
0.39 ct. tw. | \$1,755



CER1025 - 15mm
0.65 ct. tw. | \$2,445



CER1009 - 14mm
0.81 ct. tw. | \$3,300
1.50 ct. tw. | \$6,705



E611 - 15mm
1.06 ct. tw. | \$4,500
1.85 ct. tw. | \$8,700



DE16114 - 8mm
0.12 ct. tw. | \$600



DE16115 - 9mm
0.18 ct. tw. | \$870



DE16116 - 11mm
0.21 ct. tw. | \$1,050



DE16117 - 12mm
0.21 ct. tw. | \$1,125



DE16118 - 13mm
0.25 ct. tw. | \$1,200



CE127 - 7mm
0.05 ct. tw. | \$540



DEH6811 - 10mm
0.06 ct. tw. | \$600



DE16111 - 12mm
0.09 ct. tw. | \$660



CER985 - 13mm
0.24 ct. tw. | \$1,425



DEH5437 - 14mm
0.29 ct. tw. | \$1,500
0.46 ct. tw. | \$2,100
0.68 ct. tw. | \$2,850



CER371RB - 12mm
0.16 ct. tw. | \$660



CER371E - 12mm
0.16 ct. tw. | \$660



CER371RU - 12mm
0.16 ct. tw. | \$660



SE7401270 - 11mm
0.54 ct. tw. | \$1,740



SE073TQ - 13mm
\$990

EARRINGS



SE74841
0.43 ct. tw. | \$2,400
0.75 ct. tw. | \$3,585



SE74454
0.46 ct. tw. | \$2,265



SE754073
0.54 ct. tw. | \$2,400
0.66 ct. tw. | \$3,150
0.99 ct. tw. | \$4,500



NE89454R
0.72 ct. tw. | \$2,160



DEG6891
0.30 ct. tw. | \$1,335
0.82 ct. tw. | \$3,690



SE745654
0.11 ct. tw. | \$810



DEJ1646
0.13 ct. tw. | \$990



SE7042
0.11 ct. tw. | \$735



DEF0369
0.67 ct. tw. | \$2,550



DEH0495R
0.34 ct. tw. | \$1,395



SE7413534
0.20 ct. tw. | \$990



E593
0.24 ct. tw. | \$1,125



CER824
0.31 ct. tw. | \$1,320



E11893
0.26 ct. tw. | \$1,455



SE7413625
0.06 ct. tw. | \$540
0.13 ct. tw. | \$780



E590
0.24 ct. tw. | \$1,155
0.50 ct. tw. | \$1,890
0.97 ct. tw. | \$3,870



CER1026
0.17 ct. tw. | \$1,050

See more at sabrinausa.com
Prices subject to change

NECKLACES



CP1710
0.35 ct. tw. | \$1,350
0.58 ct. tw. | \$2,460
0.81 ct. tw. | \$3,510



CP1737
0.27 ct. tw. | \$1,350
0.44 ct. tw. | \$1,770
0.68 ct. tw. | \$2,550
1.33 ct. tw. | \$4,755



CP1783
0.32 ct. tw. | \$1,575



CP1795
0.22 ct. tw. | \$1,425



SN086
0.15 ct. tw. | \$1,815



CP1835
0.08 ct. tw. | \$780



SN082
0.10 ct. tw. | \$840
0.15 ct. tw. | \$1,155
0.20 ct. tw. | \$1,350



CP2787
0.10 ct. tw. | \$1,050



NNG1161 - 32"
4.00 ct. tw. | \$22,950

NECKLACES



CP1596
0.23 ct. tw. | \$1,110



CP1607
0.10 ct. tw. | \$885



CP1706
0.25 ct. tw. | \$1,470



CP1886
1.06 ct. tw. | \$4,245



SPJ5065
0.35 ct. tw. | \$2,220



SP74841
0.20 ct. tw. | \$1,680
0.41 ct. tw. | \$2,250
0.72 ct. tw. | \$3,825



SNJ9698
0.47 ct. tw. | \$2,070



CP1597
0.10 ct. tw. | \$960

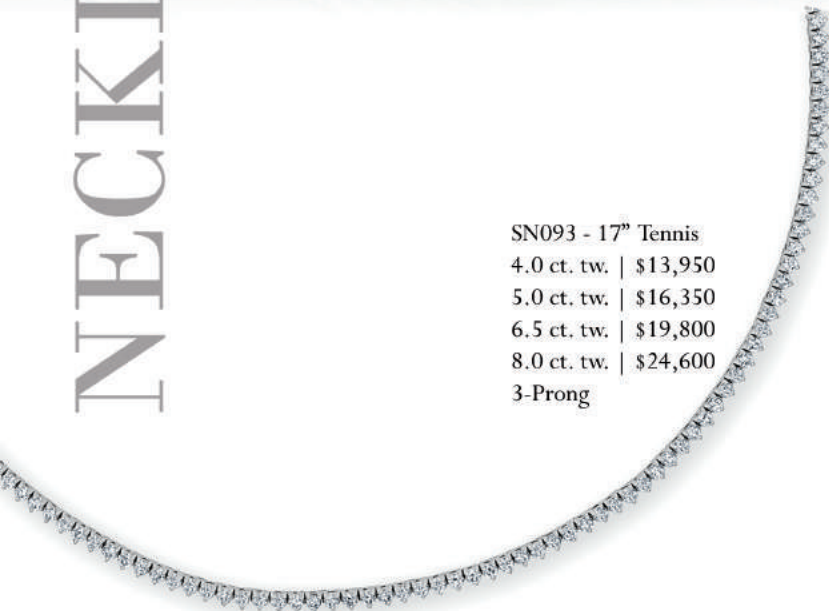
See more at sabrinausa.com
Prices subject to change

NECKLACES

SN092 - 17" Tennis
 3.15 ct. tw. | \$10,920
 5.35 ct. tw. | \$17,295
 7.50 ct. tw. | \$22,305
 9.07 ct. tw. | \$27,900
 4-Prong



SN093 - 17" Tennis
 4.0 ct. tw. | \$13,950
 5.0 ct. tw. | \$16,350
 6.5 ct. tw. | \$19,800
 8.0 ct. tw. | \$24,600
 3-Prong



SN758648A
 1.42 ct. tw. | \$7,095
 Adjustable Choker



CNP1854
 3.33 ct. tw. | \$13,950
 Flexible Choker



SN70538 - 13"-16"
 2.04 ct. tw. | \$11,250
 Adjustable Choker



SN70517 - 13"-16"
 3.30 ct. tw. | \$13,860
 Adjustable Choker



RINGS



NR33675U
0.24 ct. tw. | \$1,245



RA-0033
0.33 ct. tw. | \$1,520
0.50 ct. tw. | \$1,980



R863 - Halfway
0.57 ct. tw. | \$2,910



R358 - 3/4 way
0.93 ct. tw. | \$3,825



KR15500 - Eternity
0.16 ct. tw. | \$900
Stock all sizes



CR3234
0.25 ct. tw. | \$1,545



CR4074
0.19 ct. tw. | \$1,605



CR4076
0.53 ct. tw. | \$2,580



CR4075
0.23 ct. tw. | \$1,620



R565
0.36 ct. tw. | \$1,890



CR3886
0.09 ct. tw. | \$750



NRA1969
0.30 ct. tw. | \$1,725



R556
0.70 ct. tw. | \$2,985



CR3883
0.10 ct. tw. | \$690



R719
0.11 ct. tw. | \$1,250



CR4863
0.14 ct. tw. | \$930



SR62016RD
0.16 ct. tw. | \$2,175



CR5143
0.25 ct. tw. | \$1,785



R14119
0.45 ct. tw. | \$2,400



SR62525
0.29 ct. tw. | \$2,220



SRJ14037
0.27 ct. tw. | \$1,395



R943
0.25 ct. tw. | \$1,440



SR34750
0.37 ct. tw. | \$2,055

See more at sabrinausa.com
Prices subject to change

RINGS



SR73898
1.82 ct. tw. | \$8,565



SR745986A
0.58 ct. tw. | \$2,925



SR747594
0.32 ct. tw. | \$2,115



AR16109
0.45 ct. tw. | \$2,025



CR4986
3.12 ct. tw. | \$10,740



CR4988
1.49 ct. tw. | \$7,950



CR5099
0.23 ct. tw. | \$1,605



CR5044
0.30 ct. tw. | \$2,685



CR4798
0.44 ct. tw. | \$2,070



AR17004 - Ascher
0.99 ct. tw. | \$5,865



AR16934 - Oval/Emerald-Cut
1.50 ct. tw. | \$7,350



CR4794
0.64 ct. tw. | \$3,540



CR4921
1.0 ct. tw. | \$4,770
1.5 ct. tw. | \$6,360
2.0 ct. tw. | \$10,200



CR4916
1.0 ct. tw. | \$4,785
1.5 ct. tw. | \$7,500
2.0 ct. tw. | \$11,025



CR4793
0.79 ct. tw. | \$4,350



RA-3198/CR5096
0.75 ct. tw. | \$3,885
0.91 ct. tw. | \$4,185

FANCY-SHAPE

CP2125
0.17 ct. tw. | \$1,350



CP2210
1.02 ct. tw. | \$5,760



CNP2252
0.31 ct. tw. | \$2,835



CER1075
0.95 ct. tw. | \$4,230

CER1156
0.37 ct. tw. | \$2,385



CER1069 - 13mm
1.54 ct. tw. | \$7,755



CER1083 - 14mm
0.71 ct. tw. | \$2,955



CER1203 - 1.25"
3.36 ct. tw. | \$16,635
5.16 ct. tw. | \$25,290



CB308
2.96 ct. tw. | \$14,985

CBR612
5.62 ct. tw. | \$28,635



COLOR



CC2257
1.33 ct. tw. | Starting at \$2,850



SN28011
1.52 ct. tw. | \$2,595



CER964E
CER966RU
CER965SA
1.0 ct. tw. | \$825

CNP2196 - 16"
10.0 ct. tw. | Starting at \$11,145



CB329EM
3.12 ct. tw. | \$13,060

CER1262
0.50 ct. tw. | \$1,335



SE28012SA
2.67 ct. tw. | \$3,945



CER1146
1.55 ct. tw. | \$3,450

CER1170
1.59 ct. tw. | \$3,615



CBR609PS
3.55 ct. tw. | \$4,985

COLOR



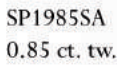
SPA11546
0.66 ct. tw. | \$1,335



SPA11545
0.47 ct. tw. | \$1,590



LKP1978
1.5 ct. tw. | \$2,550
2.0 ct. tw. | \$3,435



SP1985SA
0.85 ct. tw. | \$1,800



SP1977E
1.10 ct. tw. | \$2,205



R15003
0.60 ct. tw. | Starting at \$750
Available in all birthstones



R14678
0.20 ct. tw. | Starting at \$675
Available in all birthstones



R15136
0.23 ct. tw. | Starting at \$795
Available in all birthstones

See more at sabrinausa.com
Prices subject to change

ARIA BRACELETS



SB7940
0.22 ct. tw. | \$1,350



SB7815
0.35 ct. tw. | \$1,800



SB759616A
0.31 ct. tw. | \$1,740



SB759206
0.07 ct. tw. | \$915



SB700081BD
0.20 ct. tw. | \$1,190



SB707717SA
0.19 ct. tw. | \$1,230
Also available in ruby



SB7023SA
0.32 ct. tw. | \$3,285



SB701275TQ
0.16 ct. tw. | \$1,580
Also available in lapis



SB700028SA
0.58 ct. tw. | \$1,785

ARIA EARRINGS



SE7043
0.06 ct. tw. | \$570



SE7021
0.18 ct. tw. | \$915



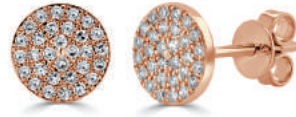
SE7010
0.10 ct. tw. | \$645



SE7542
0.19 ct. tw. | \$1,050



SE700005
0.70 ct. tw. | \$1,065
Also available in lapis,
malachite & mother of pearl



SE7256
0.17 ct. tw. | \$885



SE7009
0.08 ct. tw. | \$600



SE7115
0.14 ct. tw. | \$690



SE700087
0.16 ct. tw. | \$1,095



SE700079
0.35 ct. tw. | \$1,890



SE7511
0.20 ct. tw. | \$975



SE7080RU
0.06 ct. tw. | \$585
Also available in tsavorite
& sapphire



SE7180BD
0.17 ct. tw. | \$905



SE700067
0.44 ct. tw. | \$2,205
Also available in sapphire & ruby



SE7049SA
0.35 ct. tw. | \$960
Also available in emerald & ruby



ARTIANE GLACES



SN7025B
0.16 ct. tw. | \$1,320



SN700458
0.22 ct. tw. | \$1,380



SN700127SA
0.61 ct. tw. | \$2,220



SN7649
0.31 ct. tw. | \$1,245



SN701186TQ
0.63 ct. tw. | \$1,725



SN7027 - 21mm
0.53 ct. tw. | \$2,595



SN7007 - 13mm
0.20 ct. tw. | \$1,185



SN7005 - 8mm
0.08 ct. tw. | \$840



SN7031 - 13mm
0.09 ct. tw. | \$1,230



SN7015
0.11 ct. tw. | \$945

SN7029 - 27mm
0.80 ct. tw. | \$3,480

SN7026 - 19mm
0.38 ct. tw. | \$2,250

SN7006 - 11mm
0.14 ct. tw. | \$1,035

ARRIA RINGS



SR700045
0.06 ct. tw. | \$1,260



SR700071
0.13 ct. tw. | \$1,035



SR700072
0.02 ct. tw. | \$935



SR700074BD
0.23 ct. tw. | \$1,395



SR70077
0.06 ct. tw. | \$855



SR700049TS
0.08 ct. tw. | \$945
Also available in sapphire



SR700048SA
0.15 ct. tw. | \$1,230
Also available in tsavorite



SR7031
0.10 ct. tw. | \$690



SR7004
0.20 ct. tw. | \$1,140



SR7033
0.08 ct. tw. | \$690

See more at sabrinausa.com
Prices subject to change

CHARMS



SP700036
0.32 ct. tw. | \$2,850



LKKVP00
0.17 ct. tw. | \$2,295



SP-AQU
\$765



SN1-AQU
\$1,050

*Available in all zodiac signs



SP745690
0.26 ct. tw. | \$1,485



SP745831A
0.31 ct. tw. | \$1,785



SP7735
0.58 ct. tw. | \$2,175



SP700019
0.17 ct. tw. | \$1,680



SP745748
0.46 ct. tw. | \$2,030





CP457 - 10 mm
0.05 - 0.10 ct. tw. | \$450



LKN457 - 10 mm
0.05 - 0.10 ct. tw. | \$1,155



CP1252 - 13 mm
0.08 - 0.15 ct. tw. | \$780



CP1960 - 7 mm
0.12 ct. tw. | \$810

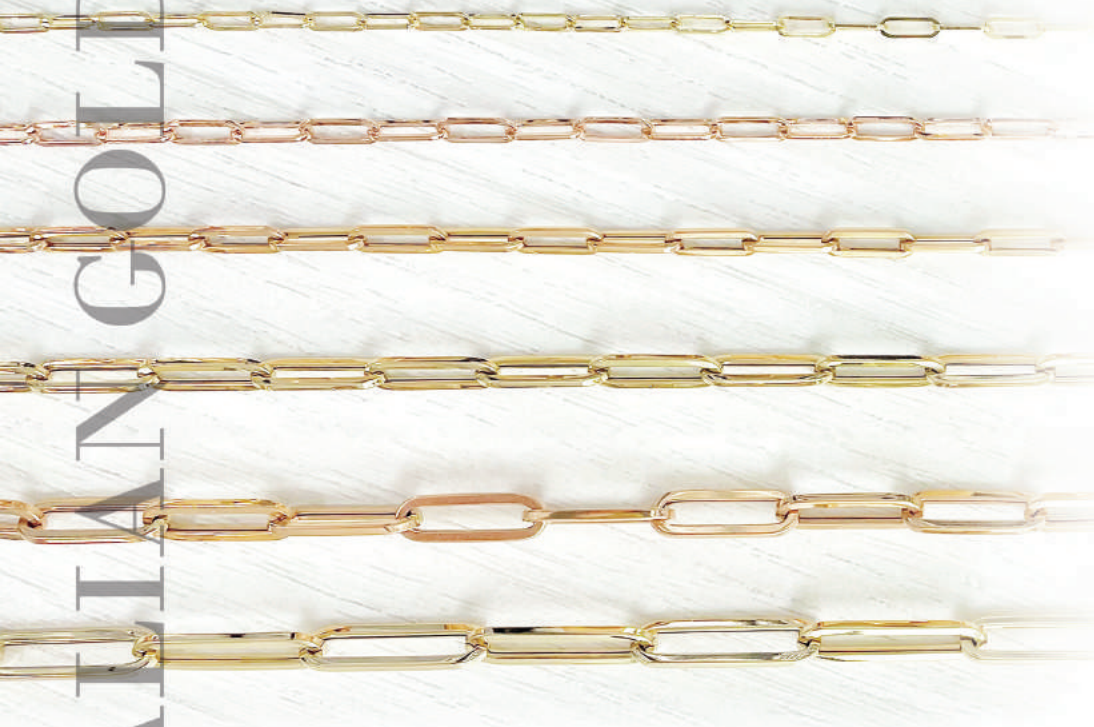


LKBR457 - 10mm
0.05 - 0.10 ct. tw. | \$750



CR5053
0.05 - 0.10 ct. tw. | \$690

Prices include chain
See more at sabrinausa.com
Prices subject to change



HCLP055 - 7.3mm
7" \$450 | 18" \$720

HCLP070 - 9.5mm
7" \$630 | 18" \$1,500

LK-SN - 10.8mm
7" \$900 | 18" \$1,860

LK-MN - 15.1mm
7" \$1,275 | 18" \$2,610

LK-LN - 17.1mm
7" \$1,500 | 18" \$3,450

LK-XLN - 21.8mm
7" \$1,650 | 18" \$3,630



HPP3X
3 x 30mm | \$780
3 x 35mm | \$915
3 x 50mm | \$1650



HPP4X
4 x 10mm | \$525
4 x 15mm | \$810
4 x 20mm | \$900



EHP2X
2 x 30mm | \$510
2 x 45mm | \$840
2 x 55mm | \$990



G-SB1037
4mm | \$3,420
5mm | \$3,900



SB10123
4mm | \$2,445
5mm | \$3,195

G-SN905
18" | \$780

G-SN900
7" | \$540
18" | \$1,050

G-SN901
18" | \$990

G-SE902
\$450

G-SE900
\$525

G-SB899
7" | \$630
18" | \$1,260

G-SB902
7" | \$615
18" | \$1,050

G-SB901
7" | \$540

G-SE901
\$360

*Available in all gemstone colors

See more at sabrinausa.com
Prices subject to change





SABRINA
DESIGNS CO.

(212) 302-6840 | mail@sabrinausa.com | sabrinausa.com

