

Installation Manual

NU  **AQUA**

Ultraviolet Sterilizer



For NU Aqua Product ID (SKU):

HC-UVC1140GPD
HC-UVC1140GPD-SYS

Congratulations on Your New

Ultraviolet
Sterilizer



**Scan here
for link to video**



Watch the complete
installation guide at

nuaquasystems.com/install

Table of contents

Introduction

Conditions	Page	4
Introduction	Page	5

Preparation

Inspection	Page	5
Recommended tools	Page	5
Installation components	Page	5
Quick connect guide	Page	6
Tube cutting guide	Page	6

Installation

UV Filter (HC-UVC1140GPD)	Page	7-8
Complete UV System (HC-UVC1140GPD-SYS)	Page	9
Feed water adapter	Page	9
Leak stop valve	Page	10
Faucet	Page	11
Carbon Filter	Page	12
UV Filter	Page	12
Optional uv filter install	Page	13

System use and care

System startup	Page	13
Filter changes	Page	14
Trouble shooting	Page	14
Warranty	Page	15-16

Conditions

READ THIS FIRST



- Please pay attention to the following installation and safety recommendations:
- Read the installation manual before installing this system.

INCOMING WATER

Incoming water pressure must be between 14 PSI and 80 PSI. If your water pressure is above 80 PSI you will need a pressure regulator for your sterilizer. Test your water pressure occasionally to make sure the system is performing. Extremely hot or cold incoming water will damage the system and cannot be used. Do not install where water hammer conditions exist, you should install a water hammer arrestor

LEAKS

Check the system occasionally after installation or maintenance to make sure no leaks have developed. Install the system in a location with adequate drainage.

GENERAL

This UV sterilizer unit is for climate controlled indoor use only. Exposure to overly high or low temperature ranges will damage the unit. Follow all of your state and local laws and codes regarding plumbing even if they differ from what is stated in this manual. If your state law requires it or you prefer to we recommend using a professional licensed installer or plumber who meets the requirements of this system. All O-Rings, fittings, tubing, filter canisters, and teflon tape wear out after a certain period of time. The lifetime of your components are subject to change with the quality of the water supplied. Use appropriate eye and face protection when performing any drilling.

MAINTENANCE

The owner/user is obligated to properly maintain the UV sterilizer when necessary, at least every 1 year. This includes the following:

- Physically inspect each connection and tubing.

At least every 3 years:

- Replace tubing
- Replace leak detector

LIMIT OF LIABILITY

In all circumstances, NU Aqua System's maximum liability is limited to the purchase price of the product(s) sold. NU Aqua Systems is not responsible or financially liable for any water damage, property damage, or personal injury, direct or indirect, that may occur from normal or correct use of the products we sell, catastrophic failure of the products we sell, failure to properly connect the units to water supply lines, and/or failure to understand and observe the proper water pressure ratings and requirements for these units. Use, install and monitor all of our products solely at your own risk. Always check all connections for leaks periodically. NU Aqua Systems is not responsible for any leaks or water damage. In case some states do not allow the exclusion or limitation of incidental or consequential damages, you may choose to return the system. If you choose to keep it, you insist this exclusion still applies to you.

Introduction

Welcome to the NU Aqua family! We're excited for you to experience the benefits of our premium home water Ultraviolet Sterilizer. This guide will walk you through the installation process step-by-step, so you can have your new system up and running in no time.

Inspection

Once you have unpacked your new system and all of the components, please take a moment to carefully inspect all of the fittings and tubing. Make sure that nothing has come loose during shipping. If any part appears cracked or broken, please do not proceed with installation. Instead, please contact us directly so that we can send you a replacement part.

Email: support@nuaquasystems.com

Phone: 1(888) 621-0460

Recommended Tools



Phillips screwdriver



Razor blade



1/4" & 1/2" Drill bits



Crescent wrench

Installation components

UV Filter Only (HC-UVC1140GPD)



UV Sterilizer



Power supply



Mounting plate



Double sided foam tape



Screws



1/4" Tubing

UV Filter Combo (HC-UVC1140GPD-SYS)



Undersink 1 stage carbon filter



Feed water adapter



Flow restrictor



Faucet



Leak detector



UV Filter Kit

Quick Connect Guide

Tubing/Fittings/ Plug Removal

If there is a retaining clip on the collet, remove it first. Push down on the collet to unlock the tubing, then gently pull the tube, fitting, or plug to remove it.

Install or Remove Retaining Clips

To lock a tube in its fitting make sure that it is fully inserted. Slide the retaining clip between the collet and fitting. Before tubing can be removed from a fitting you must remove this clip first. To remove the retaining clip simply pull the clip away from the fitting until it slides completely out.

Insert Tubing

Push the tubing straight and level into the fitting. When inserting the tubing make sure you push until it stops to ensure the lock is activated. The tubing will travel 5/8" into the fitting. Gently pull on the tubing to check that the lock is activated.



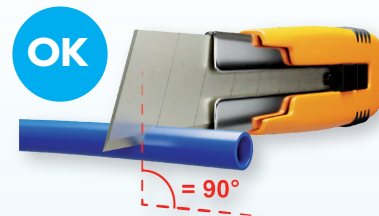
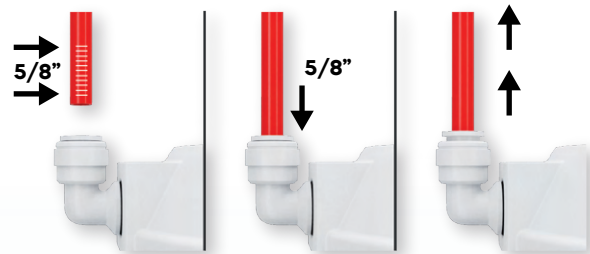
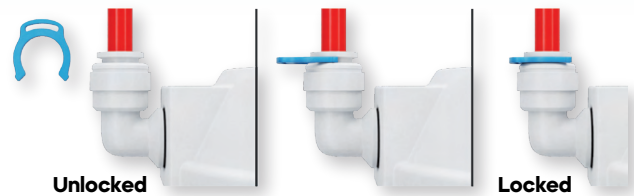
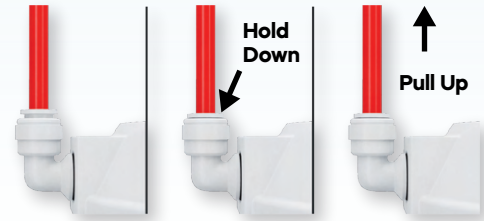
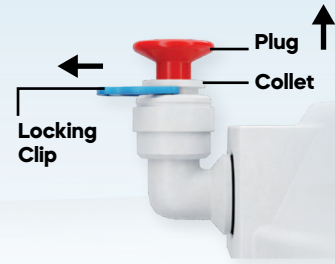
NOTE:
Always check each connection
to make sure its secure

How to Cut Tubing

When cutting the supplied tubing its important to use a sharp razor blade. Place the tubing on a flat surface and cut straight through the tubing. All cuts to your tubing must be perfectly straight to ensure the best connections.



NOTE:
Improperly cut tubing may cause
a leak

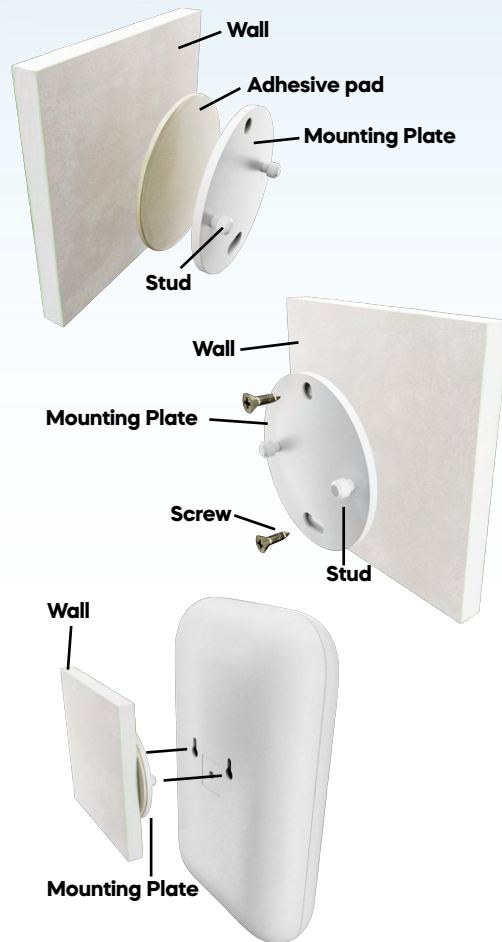


Installation

UV Filter Only (HC-UVC1140GPD)

Mounting

There are two mounting options for your UV filter. Option one is a adhesive pad. This is the easiest option but will be less secure. Option two is a hard mount that is more secure and uses screws to attach to the inside of your cabinet.



Adhesive

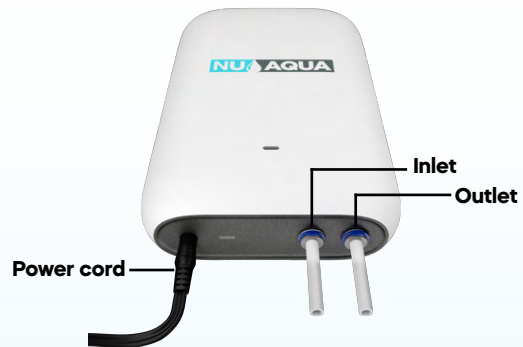
1. Select the location you want to install your UV Filter. This should be atleast 8 inches above the bottom of the cabinet.
2. Peel off the backing of the adhesive pad.
3. Firmly press the adhesive pad against the cabinet wall.
4. Peel off the front cover of the adhesive pad. Press the mounting plate firmly against the pad to secure it.
5. Hang the UV water filter on the mounting plate studs.

Hard Mount

1. Select the location you want to install your UV Filter. This should be atleast 8 inches above the bottom of the cabinet.
2. Secure the mounting plate directly to the cabinet wall using the supplied screws
3. Hang the UV water filter on the mounting plate studs.

Connections

1. Connect the pure water outlet from your filtration system to the quick connect inlet on the bottom of the UV filter. Secure the tubing in place with the retainer clip. You may need to cut excess tubing.
2. Connect the supplied tubing to the outlet located on the bottom of your UV filter. Secure the tubing in place with the retainer clip.
3. Connect the tubing from the outlet to your faucet. You may need to cut excess tubing.
4. Connect the power supply to the port located on the bottom of the UV filter.
5. Now to turn the system on connect the power supply to a wall outlet.



NOTE:
Improperly cut tubing may cause a leak



NOTE:
Always check each connection to make sure its secure

Installation

System startup

1. Connect the power supply to the port located on the bottom of the UV filter.
2. Now to turn the system on connect the power supply to a wall outlet.



WARNING: Check system for leaks every day for one week after installation.



System functions

The red light on the bottom of the system indicates that it is powered on. The green light on the front of the system indicates that the UV light is on and will only turn on when water is drawn from the system.

Green light: UV light on



Red light: powered on

Installation

Complete System (HC-UVC1140GPD-SYS)

Feed Water Adapter

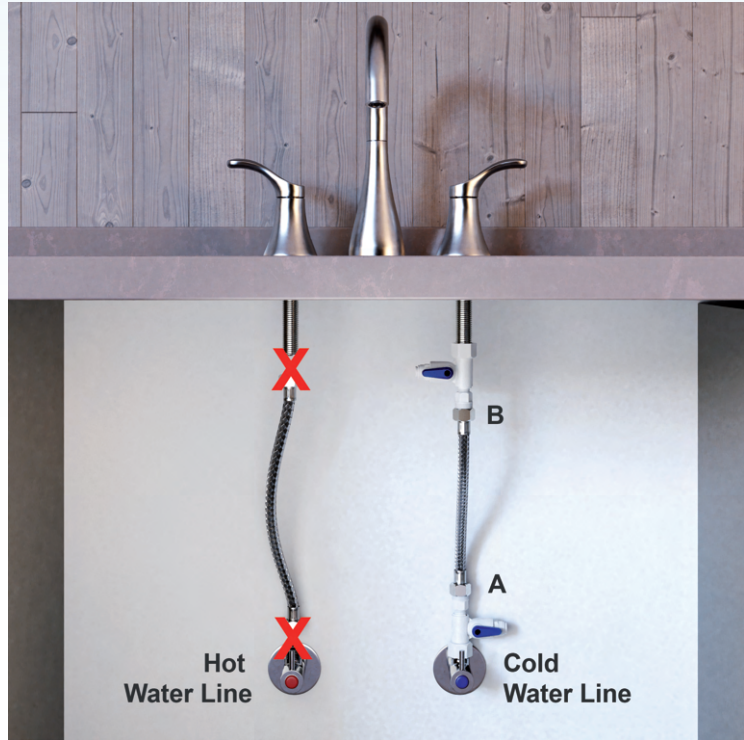
1. Locate and turn off the cold water valve under your sink. Next turn on the cold water faucet to drain any remaining water in the line.


2. Place a towel below your cold water valve to catch any remaining water in the line. Loosen the nut on the water line where it is attached to the valve. Feed water adapter can be installed in either location A or B as illustrated in the diagram.

3. Wrap the threads of the water valve and feed water adapter 8-10 times with teflon tape. Using an adjustable wrench, secure the feed water adapter onto the cold water valve and the water line to the feed water adapter.

4. Turn the feed water valve to the off position for the remainder of the installation process.

5. Insert one end of your white tubing into the quick connect fitting on your feed water adapter. Secure in place with a retaining clip.



WARNINGS:

Only connect to cold water line.
Hot water will damage your system.

WARNINGS:

Turn the hot water valve off when installing on a single handed faucet.

1/2" Connection



3/8" Connection



Open



Closed



Installation

Leak stop valve installation

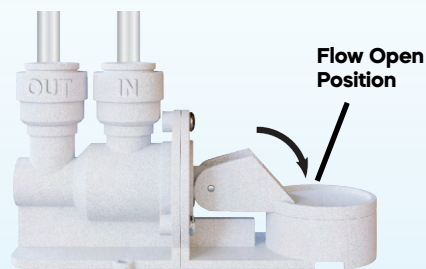
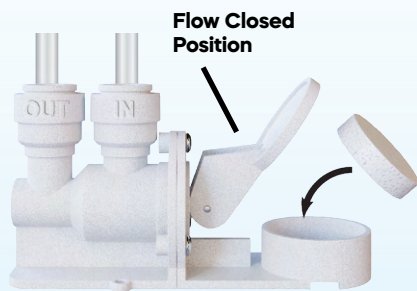
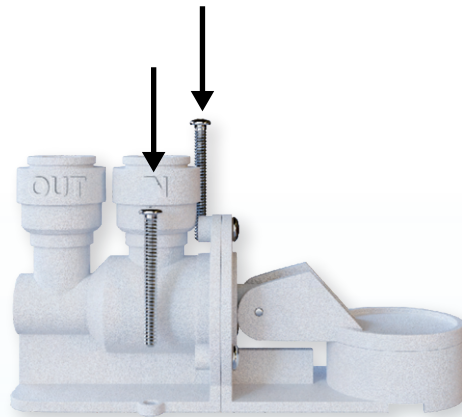


WARNING:
failure to install Leak Stop Valve will void Warranty



NOTE:
it may be best to insert the cartridge after the initial startup is complete

1. Locate the lowest point within your cabinet or installation location. Using the included screws, secure your leak stop valve in this location
2. Locate the white tubing coming from the feed water adapter and cut it near the location of the leak stopper. Connect the end of the white tubing coming from the feed water adapter to the quick connect on the leak stop valve labeled "in".
3. Take off the plastic wrap off the leak cartridge and place it inside the leak stop valve as shown.
4. Turn the leak stop valve switch down to put it in the on position.



Installation

Faucet Installation

Drilling

If your sink has an existing hole this can be used for your faucet. If you have to drill a new hole follow the steps below.

Granite / Marble / Quartz sinks



Keep the drill bit and hole wet during the drilling process

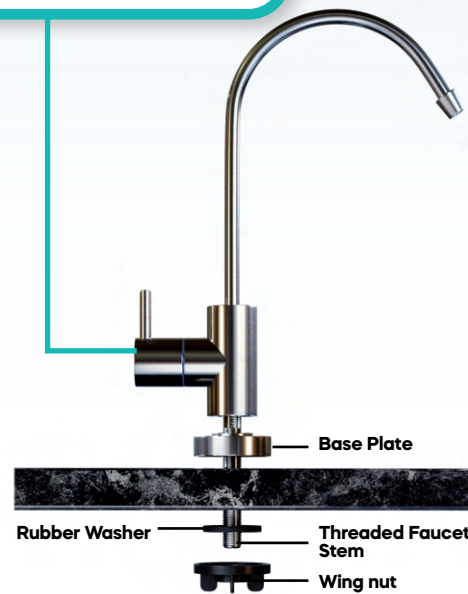
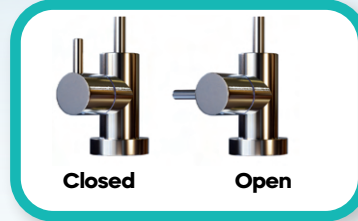
1. Locate the section on your countertop to install your faucet. Using plumbers clay form a ring around the section you will be drilling. This will be used to retain water for the drilling process.

2. Fill the ring with water. Using a diamond tip hole saw drill bit slowly begin drilling. Apply light, and even pressure and let the drill do the work.

Stainless Sink

1. Locate the section on your countertop to install your faucet and drill a 1/4" pilot hole. Once completely drilled through switch to a 1/2" drill bit and re-drill the same hole.

Open and Closed Position



Installation

1. Slide the base plate on the threaded faucet stem. Insert the faucet into the hole in your countertop.

2. Under your sink slide the rubber washer on the faucet stem. Secure the faucet in place by hand with the wing nut.

Tubing Connection

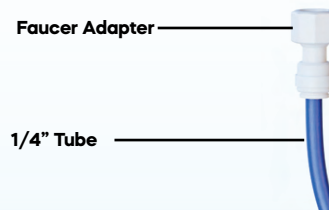
TYPE A

1. Connect the white tubing to the quick connect fitting on your faucet adapter.
2. Screw the faucet adapter onto the threaded faucet stem.

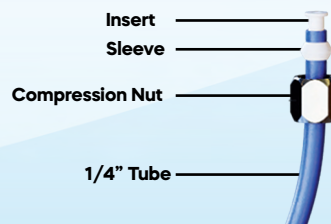
TYPE B

1. Slide the compression nut with the open end facing upwards down your white tubing. Follow the nut with your sleeve.
2. Slide the insert into the opening of your tubing firmly.
3. Insert your tubing into the faucet stem and tighten the compression nut to secure it in place. Do not over tighten.

TYPE A



TYPE B



Installation

Filter Installation

1. Mount the filter with the screws provided in a location that is close to your leak detector.

2. Attach the tubing coming from the outlet of your leak detector to the inlet of the carbon filter. Attach the retaining clip to secure the tubing in place.

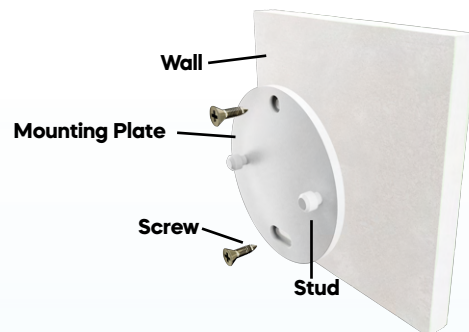
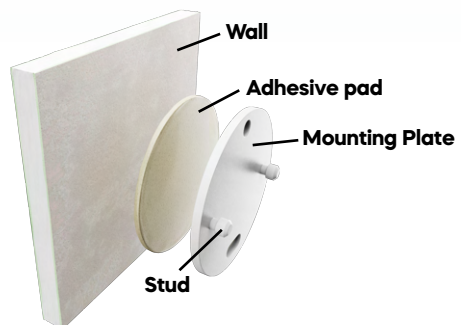


UV Filter Installation Mounting

There are two mounting options for your UV filter. Option one is an adhesive pad. This is the easiest option but will be less secure. Option two is a hard mount that is more secure and uses screws to attach to the inside of your cabinet.

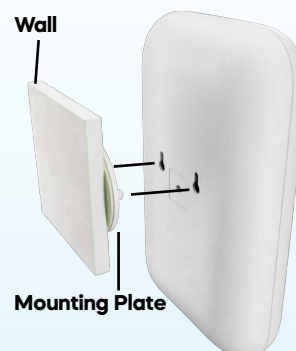
Adhesive

1. Select the location you want to install your UV Filter. This should be at least 8 inches above the bottom of the cabinet and close to your carbon filter.
2. Peel off the backing of the adhesive pad.
3. Firmly press the adhesive pad against the cabinet wall.
4. Peel off the front cover of the adhesive pad. Press the mounting plate firmly against the pad to secure it.
5. Hang the UV water filter on the mounting plate studs.



Hard Mount

1. Select the location you want to install your UV Filter. This should be at least 8 inches above the bottom of the cabinet.
2. Secure the mounting plate directly to the cabinet wall using the supplied screws.
3. Hang the UV water filter on the mounting plate studs.



Installation

UV Filter Connections

1. Cut a length of tubing that will connect between the outlet of the carbon filter and your UV filter.
2. Install this tubing into the outlet of the carbon filter and the inlet of the UV filter. Secure the tubing in place with retainer clips on both connections.
3. Cut a length of tubing that will connect between the outlet of the UV filter and the faucet. Make a cut in this tubing at a minimum of 6" past the outlet of the UV filter.
4. Connect these two pieces of tubing with the flow restrictor. Make sure the arrow is pointed in the direction of the faucet.
5. Connect this tubing to the outlet of the UV filter and faucet. Secure the tubing in place with retainer clips.



System Startup

1. Check every quick connect fitting to ensure it's fully inserted.
2. Plug in the power supply into the base of the UV filter and plug it into a wall outlet. Make sure this outlet is not on a switch for your garbage disposal.
3. Open the the cold water valve then then slowly open the feed water valve. Let the system fully pressurize and check for leaks at each connection. If you notice any leaks close the valve and reset the connection. If this does not resolve the issue contact customer support.
4. Open the faucet and allow the system to run for 3 minutes. Your water may appear dark and cloudy. This is normal during the flushing process of a new filter.

Your installation is now complete.

System functions

The red light on the bottom of the system indicates that it is powered on. The green light on the front of the system indicates that the UV light is on and will only turn on when water is drawn from the system.



Maintenance

UV Filter

The NU Aqua UV Filter utilizes industrial grade LEDs instead of traditional style bulbs. This provides years of maintenance free use.

Carbon Filter

The carbon filter in your system requires replacement every 8-12 months or 5,000 gallons.

1. First turn the feed water valve to the off position and open the faucet to relieve any pressure in the system.
2. Twist the filter counterclockwise to release it from housing and discard the old filter.
3. Inspect your new filter's top o-ring and make sure it's seated in place.
4. Install your new filter into the housing and twist clockwise to lock into place.
5. Slowly open your feed water valve and check for leaks as the system pressurizes.
6. Open the faucet and allow the system to run for 3 minutes to flush any loose carbon material. Your water may have small black particles during this process and will go away.



WARNING: Your water may appear cloudy after a filter change. This is caused by air bubbles and will go away.

Troubleshooting

Problem	Causes	Solution
No or low water flow	<ul style="list-style-type: none"> • Closed water valves • flow restrictor installed wrong direction 	<ul style="list-style-type: none"> • Open cold water valve and feed water valve fully • Check flow restrictors arrow points towards faucet
UV light off	<ul style="list-style-type: none"> • Power supply not receiving power 	<ul style="list-style-type: none"> • Try power supply on different outlet • Make sure outlet is not on garbage disposal switch
Cloud water	<ul style="list-style-type: none"> • Bubbles caused by air in system 	<ul style="list-style-type: none"> • Continue using system. This is normal and goes away with use as the air trapped in system goes away

Limited Product Warranty

SCOPE

NU Aqua Systems takes pride in selling the highest quality UV Filter ("Product") on the market. As such, NU Aqua Systems expressly warrants to the original purchaser that, for a period of two (2) years from the date of purchase, the Product will be reasonably free of defects in materials and workmanship. Within that two (2) year period from the original purchase, NU Aqua Systems will, at its option, repair or replace the Product without charge, or refund the cost of the Product, if the Product fails or does not perform as warranted solely due to a manufacturing defect within the warranty period, subject to the limitations and exclusions set forth in this Limited Product Warranty. This Limited Product Warranty only applies when the Product is used, stored, handled, fabricated and/or installed in the manner recommended by NU Aqua Systems in the Installation Instruction & Owner's Manual ("Manual").

REPAIR OR REPLACEMENT

Repair or replacement during this two (2) year warranty does not include labor charges, freight charges or any other local charges from third parties other than NU Aqua Systems, unless NU Aqua Systems expressly approves such charges in writing. During the entire two (2) year warranty, NU Aqua Systems's obligation to repair or replace shall further be limited to repair or replacement with the styles, models, products, colors, etc. of the Product that are available at the time of the repair or replacement, and shall be limited to the repair or replacement of only the specific Product that fails due to a manufacturing defect. Any repaired or replaced product shall also remain subject to the original two (2) year warranty from the date of the original purchase, and any repair or replacement shall not extend the original warranty period in any manner or start a new warranty period.

CONDITIONS OF VALIDITY OF THIS LIMITED PRODUCT WARRANTY

Even though the Product has extremely high endurance for operating conditions such as pH, maximum TDS, temperature, and optimum water pressure,

THIS LIMITED PRODUCT WARRANTY SHALL ONLY BE VALID IF:

1. The Product is operated within the confines of the following feed water conditions:

- **Water Pressure: 14 - 80 PSI**
- **PH Range: 2-11 Max. TDS: 1000 PPM Water Temperature: 40°-100° F SDI: 5**

Any information or suggestion by NU Aqua Systems with respect to the Product concerning applications, specifications or compliance with codes and standards is provided solely for your convenient reference and is made without any representation as to accuracy or suitability. You must verify and test the suitability of any information with respect to the Product for your specific application.

NON-COVERED DEFECTS

THIS LIMITED PRODUCT WARRANTY DOES NOT COVER DEFECTS CAUSED BY:

1. Improper storage, installation, maintenance, handling, use and/or alterations of the Product, including, but not limited to, noncompliance with the installation, maintenance and standard operation conditions stated in the Manual and this Limited Product Warranty.
2. Unreasonable use, unintended use, or misuse of the Product for something other than its intended purpose as a reverse osmosis system.
3. Use of replacement parts, filters, membranes or other accessories that are not sold or manufactured by NU Aqua Systems for use with this particular Product.
4. Damage not resulting from manufacturing defects that occur while the Product is in the original purchaser's possession.
5. Installation of the Product with known or visible manufacturing defects at the time of installation.
6. Damage caused by freezing, flood, fire or Act of God.

Conditions That Render This Limited Product Warranty Void

THIS LIMITED PRODUCT WARRANTY SHALL BE VOID IF:

1. The Product is not operated in compliance with normal municipal water conditions for which the particular model of this Product is intended.
2. The person seeking to invoke the warranty is not the original purchaser. That is, this Limited Product Warranty only extends to original purchasers.
3. The Product is purchased used. That is, this Limited Product Warranty only covers new products.
4. The Product is purchased from someone other than NU Aqua Systems or one of NU Aqua Systems authorized dealers. This is because, unless the Product was sold by NU Aqua Systems or one of its authorized dealers, NU Aqua Systems cannot verify or guarantee the integrity or authenticity of the Product.

GENERAL CONDITIONS

The warranties set forth herein are the only warranties made by NU Aqua Systems in connection with the product. NU Aqua Systems cannot and does not make any implied or express warranties with respect to the product, and disclaims all other warranties, including, but not limited to, any warranty of merchantability or fitness for a particular purpose. Products sold by NU Aqua Systems are sold only to the specifications specifically set forth by NU Aqua Systems in writing. Other than the limited product warranty set forth herein, NU Aqua Systems makes no other warranties, express or implied. NU Aqua System's sole obligation under this warranty shall be repair or replacement of a non-conforming product or parts of the product, or at the option of NU Aqua Systems, return of the product and a refund of the purchase price. Buyer assumes all risk whatsoever as to the result of the use of the product purchased, whether used singularly or in combination with any other products or substances.

No claim by the buyer/owner of any kind, including claims for indemnification, shall be greater in amount than the purchase price of the products in respect to which damages are claimed. In no event shall NU Aqua Systems be liable to buyer/owner in tort, contract or otherwise, for any special, indirect, incidental, consequential, reliance, statutory, special, punitive or exemplary damages, including, but not limited to, lost profits, loss of use, loss of time, inconvenience, damage to goodwill or reputation, or loss of data, even if advised of the possibility of such damages or such damages could have been reasonably foreseen, in connection with, arising out of, or as a result of, the sale, delivery, servicing, use or loss of use of the products sold hereunder, or for any liability of buyer to any third party with respect thereto.

In case some states do not allow the exclusion or limitation of incidental or consequential damages, you may choose to return the Product. If you choose to keep it, you insist this exclusion still applies to you.

OBTAINING WARRANTY COVERAGE OR GENERAL INQUIRIES

If coverage is available, you may obtain coverage under this Limited Product Warranty by providing NU Aqua Systems with proof of original purchase, and that you are the original purchaser. For service under this Limited Product Warranty, you must notify NU Aqua Systems by phone at 1-888-621-0460, by email at support@nuaquasystems.com, or in writing at 735 Challenger Street Brea, CA 92821. In making the claim, please provide your name, address, phone number, a description of the product involved, and an explanation of the defect.