

NU  **AQUA**

Reef Series

**100gpd Rodi
Aquarium System**

**Installation
Manual**

A large, stylized water splash graphic in shades of teal and blue, centered on the page. It features a central column of water rising from a circular splash, with ripples extending outwards. The background is a solid teal color.

Reef Series

100gpd Rodi Aquarium System





Installation Manual

Table of contents

Introduction	Page	3
Preparation	Page	4
Installation	Page	5
System Startup & Flushing	Page	6
Frequently Asked Questions	Page	7
Warranty	Page	8

Introduction

Thank you for your purchase of the NU Aqua Reef Series RODI system. We're excited for you and your aquarium to experience the benefits of a premium filtration system. This guide is intended to make sure your installation is as easy as possible and pain free. If you have any questions feel free to email us at support@nuaquasystems.com or give us a call at **1(888) 621-0460**

STAGE	DESCRIPTION	SERVICE LIFE
1. Sediment Filter 	Effectively removes sediment, rust, dirt, and other suspended particles	6-9 months
2. Carbon Block Filter 	This carbon block filter removes chlorine, VOC's, organic chemicals, and odor	6-9 months
3. 100GPD RO Membrane 	The reverse osmosis membrane removes heavy metals, copper, chromium (hexavalent), lead, fluoride, nitrate, and salts	1-1.5 YEARS
4. Deionization Filter 	The deionization filter operates through ion exchange to further remove any remaining minerals and salts	When filter color is 90% golden brown or TDS is higher than 0

Preparation

INSPECTION

After unpacking your new RODI system and all the components, we recommend that you thoroughly inspect all fittings and tubing to ensure nothing has come loose during shipment. If any part appears cracked or broken from shipping, do not proceed with installation and contact us directly.

Email: support@nuaquassystems.com

Phone: 1(888) 621-0460

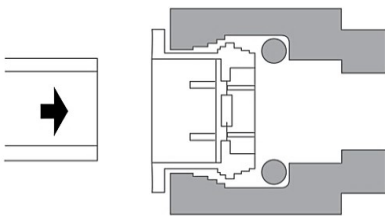
SYSTEM REQUIREMENTS

Minimum water pressure	45PSI
Water Temperature	41°F - 100°F

Note: Water pressure must not exceed 100PSI

4

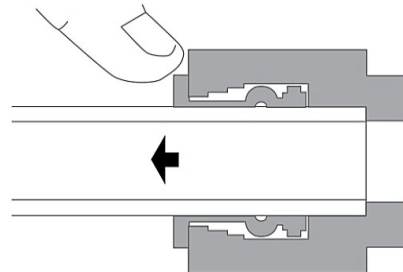
Quick Connect Guide



Never pull tube out to remove

Push collet in to release

To insert, press tubing in firmly and completely



To test integrity of fitting, give a gentle “Tug” to ensure proper connection

See all cautions, warnings and inspections

Installation

Step 1. Locate the source water connection point for your installation and turn the water off.

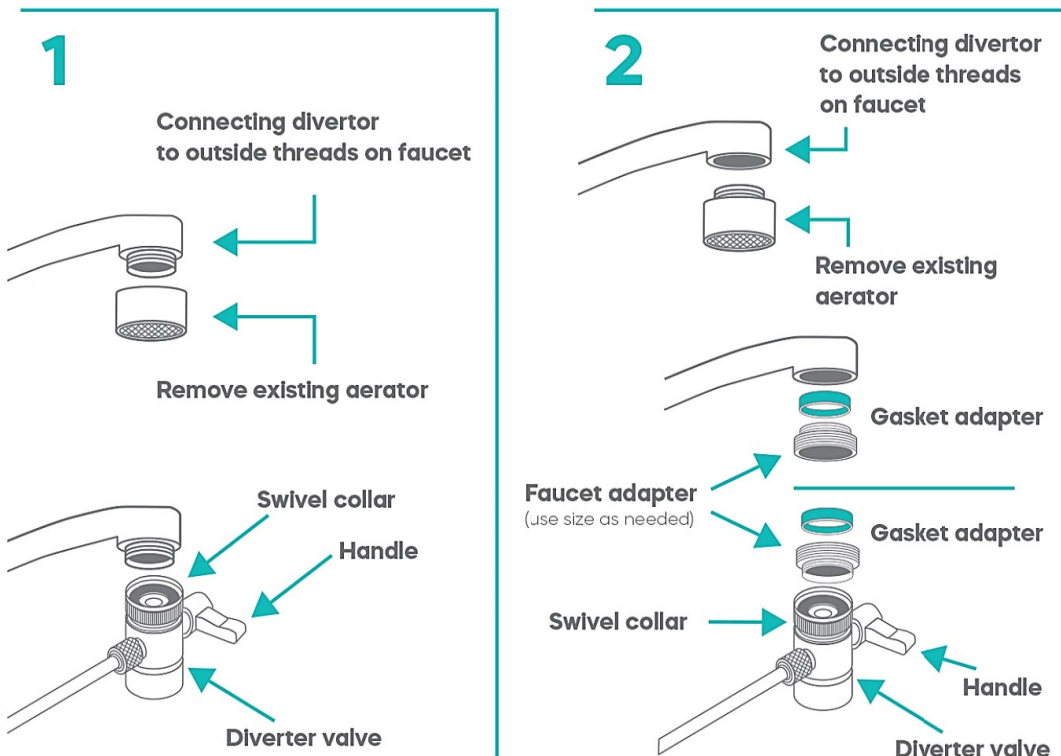
NOTE: Source water must be from a cold water line. Never use hot water with your RODI System as it can damage your membrane

Step 2. Turn the water off at the selected installation point.

Step 3. Select the appropriate adapter for feed water installation

FAUCET DIVERTER ADAPTER

1. Remove the aerator attached at the end of the faucet.
2. Locate the diverter valve and make sure the gasket is installed within the threaded cap.
3. Thread the diverter valve directly to the faucet. If the diverters thread size is different from your faucet locate the thread adapter rings and match the correct size to your faucet.



5

GARDEN HOSE & UTILITY SINK ADAPTER

1. Attach the fitting onto the garden hose threads of the water source.

Installation

Step 4. RODI System Installation

White tubing = Water from source | Black tubing = waste water | Blue Tubing = Purified water

- 1. Attach the white tubing to your source water adapter.**
- 2. Direct your purified blue line to your storage container.**
- 3. Guide your black waste line tubing down a drain.**

Step 5. System Startup & Flushing

- 1.** Turn your water valve open slowly and allow the system to slowly fill. Check all fittings and connections for any leaks.
- 2.** Run your system for approximately 1-2 hours and discard all the water produced during this time. This flushes any loose carbon particles from the system.

NOTE: Its normal for your water to have a slight grey tint during this process.

- 3.** Your system is now ready for use.

NOTE: Your TDS may be higher than normal during the first 24 hours and your water may appear cloudy. This is due to tiny air bubbles trapped in the system and will go away with use.

Frequently Asked Questions

Q: *Why is my water cloudy?*

A: When your system is new or your filters have been recently replaced air gets trapped in the system and creates tiny bubbles that appear cloudy. This will naturally go away with use and has no impact on water quality.

Q: *Is it normal for my TDS higher when my system is first turned on?*

A: Yes, this is referred to as TDS creep and happens when your system first turns.

Q: *Is it okay to leave water in the filter housings between uses?*

A: Yes, it's always best to keep them wet between uses and stored in a cool, dark location. Exposure to direct sunlight or freezing temps can cause damage to the filters and housings.

Q: *What should my TDS reading be?*

A: The TDS coming from your tap will vary by the source of your water. Typically we see ranges from 100-500TDS from most taps. The RO membrane has an efficiency around 98%. The remaining TDS left after the membrane will be dropped by the deionization filter leaving your water at 0TDS

Q: *My flow rate is low, is this normal?*

A: Since this system is rated for 75 gallons per day it should produce approximately 3 gallons per hour. If the source water pressure is low this can also affect pure water production rate.

7

Warranty

Limited Product Warranty

NU Aqua expressly warrants to the original purchaser that its Reverse Osmosis System and components (the "Product") will be free of defects in material and workmanship for use under normal care for a period of one (1) year without registration and five (5) with online warranty registration from the date of purchase (the "Warranty period). During the Warranty Period and subject to the limitations and exclusions set forth below, NU Aqua will, at its option, replace the product or refund the Product purchase price if the Product fails to satisfy this Limited Product Warranty. This warranty does not cover labor.

No warranty is given as to the service life of any filter cartridges or membrane as this will vary depending on local water conditions and water input.

Limitations and Exclusions

Except as otherwise expressly provided above, NU Aqua makes no warranties, express or implied, arising by law or otherwise, including without limitation the implied warranties of merchantability and fitness for a particular purpose, to any person. This Limited product Warranty may be not altered, varied or extended except by written instrument executed by NU Aqua. The remedies of replacement or refund of the Product purchase price are exclusive and are the sole obligations of NU Aqua under this Limited Product Warranty. NU Aqua will not be liable for any loss or damage arising from installation and use of the Product, whether direct, indirect, special, incidental or consequential, regardless of the legal theory asserted, including warranty, contract, negligence or strict liability. Some states and countries do not allow the exclusion or limitation of incidental or consequential damages, so the above limitation may not apply to you.

Conditions of Validity of this Limited Product Warranty

This Limited Product Warranty shall only be valid if:

- 1** The replaceable filters and membrane are changed and maintained on a regular basis as directed in the Instruction and Owner's Manual. In some areas, the amount of the impurities present in the local water supply may require that the filters and membrane be replaced on a more frequent basis.
- 2** The Product is operated in compliance with the operating conditions specified in the Installation and Owner's Manual.
- 3** The person seeking to invoke this Limited Product Warranty is the original purchaser of the Product.

Non-Covered Defects

- 1** Improper storage, installation, maintenance, handling, use and/or alterations of the Product, including but not limited to non-compliance to the installation, maintenance and standard operation conditions stated in the Instruction and Owner's manual.
- 2** Unreasonable use, unintended use, or misuse of the Product for something other than its intended use as a reverse osmosis system.
- 3** Damage not resulting from manufacturing defects that occur while the product is in the original purchaser's possession.
- 4** Installation of the Product with known or visible manufacturing defects at the time of installation.
- 5** Damage caused by freezing, flood or fire.