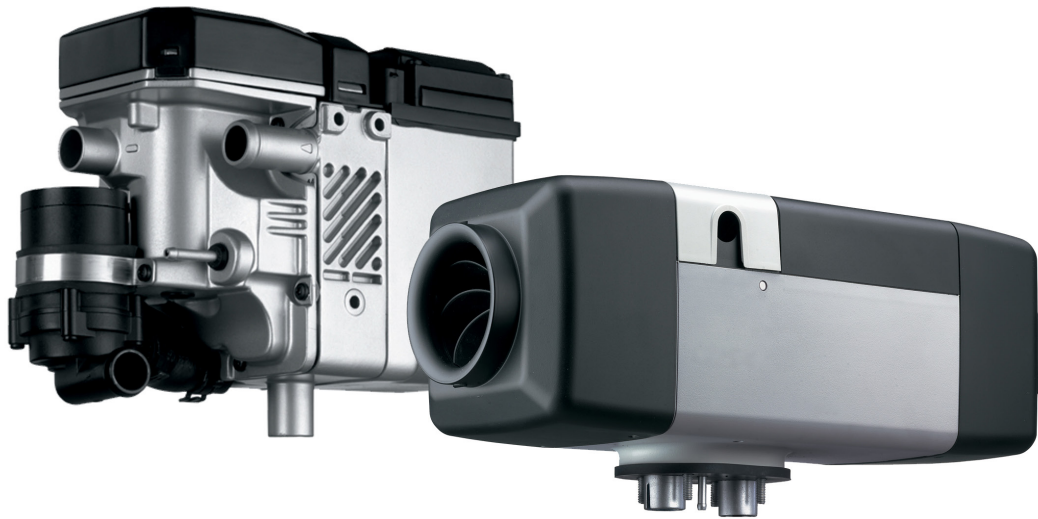


Tandem 717

Air and Coolant Heater System



Save Fuel and Reduce Emissions

The Tandem 717 heating system combines the benefits of a Air Top 2000 ST and a Thermo Top C for a total vehicle heating solution. This CARB approved and EPA SmartWay verified solution will meet government regulations. It will also save fuel, reduce idling, improve driver comfort, and improve the lifetime of your equipment.

Air Heater Features:

- Provides rapid cab heating without idling
- Uses as little as 1 gallon of fuel in a 22 hour period
- CARB approved and EPA SmartWay verified
- Fast Return on Investment
- Quiet operation ensures a restful night's sleep
- Full diagnostics with PC interface available
- High heat output in a compact design
- 7,000 BTU/h output

Coolant Heater Features:

- Provides engine pre-heat without idling
- Uses as little as 1 gallon of fuel in a 10 hour period
- CARB approved and EPA SmartWay verified
- Fast Return on Investment
- Quiet operation ensures a restful night's sleep
- Full diagnostics with PC interface available
- Increases productivity
- 17,200 BTU/h output

Technical Specifications

Air Top 2000 ST	
Heating Capacity	3,100 – 7,000 BTU/h (0.9 – 2.0 kW)
Fuel	Diesel #1, Diesel #2, Arctic, Biodiesel B5 & B20
Fuel Consumption	0.03 – 0.06 gal/h (0.12 – 0.24 l/h)
Rated Voltage	12 V
Operating Voltage Range	10.5 – 16 V
Rated Input	1.25 – 2.45 Amps (14 – 29 Watts)
Air Flow	37 cfm (63 m ³ /h)
Dimensions (L x W x H)	12.25 x 4.78 x 4.85 in (311 x 120 x 121 mm)
Weight	5.73 lbs (2.6 kg)

Available Tandem 717 Heater Kits:

Tandem 717 Diesel Kit with SmarTemp Control fx 2.0 (12 V) - Part Number: 5010996A

Tandem 717 Diesel Kit with SmarTemp Control 2.0 and SmarTemp Control fx 2.0 (12 V) - Part Number: 5010720A

Tandem 717 Diesel Kit w/enclosure (12 V) - Part Number: 5010198A

Standard Kit Components:

- Air Top 2000 ST w/Integrated Control Unit
- Thermo Top C Heater w/ Water Pump
- Control Dial w/Variable Output Temperature Control
- SmarTemp Control fx 2.0 Timer
- Fuel Metering Pump w/Mounting Bracket
- Universal Dual Standpipe w/Fuel Line & Filter
- Exhaust Tubing and Combustion Air Tubing
- Heater Mounting Bracket w/Gasket
- Wiring Harness w/Fuse Holder
- Heater Ducting w/Air Inlet/Outlet Grills
- Blink Code and PC Interface Diagnostics
- Operation/Installation Manual
- 2 Year/2000 Hour Limited Warranty

Optional Accessories:

SmarTemp Control 2.0 Retail Kit (w/Harness) - PN: 5010628B

SmarTemp Control 2.0 - Part Number: 5010624B*

SmarTemp Harness - Part Number: 5010612B*

Heater Mounting Bracket (for Thermo Top C) - PN: 901088

Remote Temperature Sensor - Part Number: 1319842A

*These Part Numbers should be ordered together

Technical Specifications

Thermo Top C	
Heating Capacity	8,600 – 17,200 BTU/h (2.5 – 5.0 kW)
Fuel	Diesel #1, Diesel #2 Arctic, Biodiesel B5 & B20
Fuel Consumption	0.08 – 0.16 gal/h (0.30 – 0.61 l/h)
Rated Voltage	12 V
Operating Voltage Range	10.5 – 15 V
Rated Input	3.8 Amps (46 W)
Water Flow	2 gal/min at 1.9 PSI (450 l/h at 0.13 bar)
Dimensions (L x W x H)	9.125 x 4.125 x 6.4 in (232 x 105 x 193 mm)
Weight	7 lbs (3.2 kg)

SmarTemp Control 2.0 (optional):

for Air Top 2000 ST - order Part Number 5010624B*



- Programmable heater start time
- Ergonomical design
- Large backlit LCD screen
- Ambient temperature display

SmarTemp Control fx 2.0:

Optional for Tandem Kit Part Number 5010198A - order Part Number 5010633C



- Programmable runtimes
- USB diagnostics
- Ergonomical design
- Large backlit LCD screen