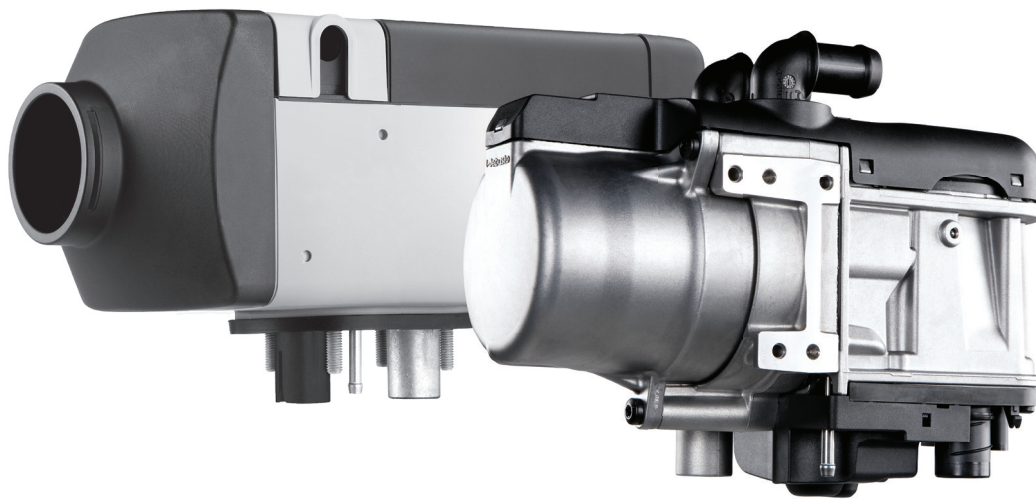


Tandem 717

Air and Coolant Heater System



Save Fuel and Reduce Emissions

The Tandem 717 heating system combines the benefits of the Air Top 2000 STC and new Thermo Top Evo for a total vehicle heating solution. Utilizing proven technology, it will also save fuel, reduce idling, improve driver comfort, and improve the lifetime of your equipment.

Air Heater Features:

- Provides rapid cab heating without idling
- Uses as little as 1 gallon of fuel in a 22 hour period
- Fast Return on Investment
- Quieter operation ensures a restful night's sleep
- Full diagnostics with PC interface available
- High heat output in a compact design
- 7,000 BTU/h output

Coolant Heater Features:

- Provides engine pre-conditioning without idling
- Fast Return on Investment
- Quieter heater and fuel delivery operation
- Emission reduction device
- Blink code diagnostics
- 17,200 BTU/h output

Technical Specifications

	Air Top 2000 STC
Heating Capacity	3,100 – 7,000 BTU/h (0.9 – 2.0 kW)
Fuel	Diesel #1, Diesel #2, Arctic, Biodiesel B5 & B20
Fuel Consumption	0.03 – 0.06 gal/h (0.12 – 0.24 l/h)
Rated Voltage	12 V
Operating Voltage Range	10.5 – 16 V
Rated Input	1.25 – 2.45 Amps (14 – 29 Watts)
Air Flow	55 cfm (93 m ³ /h)
Dimensions (L x W x H)	12.25 x 4.78 x 4.85 in (311 x 120 x 121 mm)
Weight	5.73 lbs (2.6 kg)

Technical Specifications

	Thermo Top Evo
Heating Flow [kW] (Partial Load / Full Load)	8,600 - 17,200 BTU/h (2.5 - 5.0 kW)
Fuel	Diesel, Arctic Diesel
Nominal Voltage [V] (Suitability for special fuels)	12
Operating Voltage	10 to 16.5
El. Power Consumption [W] including coolant pump	41
El. Current Consumption During Start-up at 12 V [A]	14
Fuel Pump / Coolant Pump	DP 42 / U4847 econ
Noise Emission [dB]	61
Dimensions (L x W x H)	8.54 x 3.58 x 5.79 in (217 x 91 x 147 mm)
Weight	4.6 lb. (2.1 Kg)
Diagnostic	Blink Code, Diagnostic Tool

Available Tandem 717 Heater Kits:

Tandem 717 Diesel Kit with SmarTemp Control fx 2.0 (12 V) -
Part Number: 5013465

Tandem 717 Diesel Kit with SmarTemp Control 2.0 and
SmarTemp Control fx 2.0 (12 V) - Part Number: 5013464

Standard Kit Components:

- Air Top 2000 STC w/ Integrated Control Unit
- Thermo Top Evo Heater w/ Water Pump
- Control Dial w/ Variable Output Temperature Control
- SmarTemp Control fx 2.0 Timer for Thermo Top Evo
- Rheostat Control for Air Top 2000 STC
- Fuel Metering Pump w/ Mounting Bracket
- Universal Dual Standpipe w/ Fuel Line & Filter
- Exhaust Tubing and Combustion Air Tubing
- Heater Mounting Bracket w/ Gasket
- Wiring Harness w/ Fuse Holder
- Heater Ducting w/ Air Inlet/Outlet Grills
- Blink Code and PC Interface Diagnostics
- Operation/Installation Manual
- 2 Year/2000 Hour Limited Warranty

SmarTemp Control 2.0 (optional):

for Air Top 2000 STC - order Part Number 5010624



- Programmable heater start time
- Ergonomic design
- Large backlit LCD screen
- Ambient temperature display

SmarTemp Control fx 2.0:

order Part Number 5010633



- Programmable runtimes
- Adjustable LVD
- Ergonomic design
- Large backlit LCD screen