

SHERLE WAGNER INTERNATIONAL

STONE INSERT KEYSTONE CABINET AND DRAWER KNOB SMALL 2165A-100-XXXX-XX
STONE INSERT KEYSTONE CABINET AND DRAWER KNOB MEDIUM 2165A-125-XXXX-XX
STONE INSERT KEYSTONE CABINET AND DRAWER KNOB LARGE 2165A-150-XXXX-XX



SHOWN: 2165A-100-BRTI-BG, 2165A-125-MALA-BG AND 2165A-150-RSQU-BG

PRODUCT FEATURES

- o Available in all Sherle Wagner International finishes
- o Solid brass/bronze construction
- o Includes mounting hardware
- o Available in different sizes
- o Refer to stone chart for standard stone insert, contact an SWI representative for custom stone options

AVAILABLE METAL FINISHES

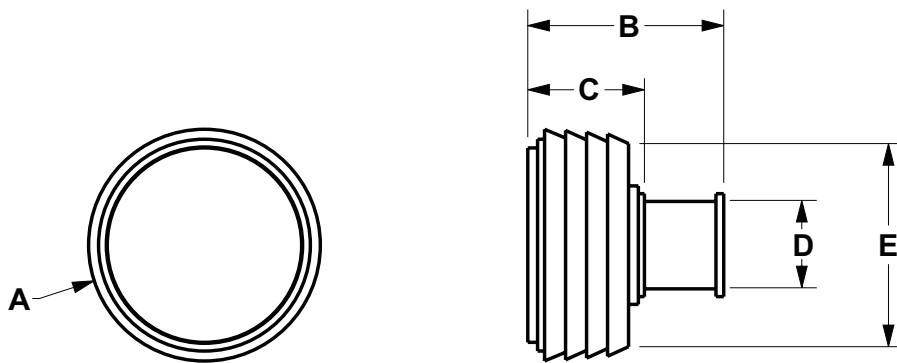
PN Polished Nickel	SB Satin Brass	GP Gold Plate	ES English Silver	PE Black Pearl	SP Satin Platinum
CP Polished Chrome	OB Oil Rubbed Brass	AL Almond Gold	BS Butler Silver	BG Burnished Gold	HP High Polished Platinum
BN Brushed Nickel	PB Polished Brass	RG Rose Gold	AP Antique Pewter	AG Antique Gold	BP Burnished Platinum
BC Brushed Chrome					

AVAILABLE ONYX INSERTS

BKOX Black Onyx	WHOX White Onyx	HNOX Honey Onyx	PKOX Pink Onyx	GROX Green Onyx	BROX Brown Onyx
-----------------	-----------------	-----------------	----------------	-----------------	-----------------

AVAILABLE SEMIPRECIOUS INSERTS

RKCR Rock Crystal	AMET Amethyst	BRTI Brown Tiger Eye	MALA Malachite	JASP Jasper	RHOD Rhodochrosite
RSQU Rose Quartz	BKOB Black Obsidian	BLTI Blue Tiger Eye	LAPI Lapis Lazuli		



ITEM	A	B	C	D	E
SMALL	Ø 1" [25 mm]	1" [25 mm]	5/8" [17 mm]	Ø 3/8" [9 mm]	Ø 7/8" [22 mm]
MEDIUM	Ø 1-1/4" [32 mm]	1-1/8" [28 mm]	3/4" [19 mm]	Ø 1/2" [12 mm]	Ø 1" [25 mm]
LARGE	Ø 1-1/2" [38 mm]	1-1/4" [32 mm]	3/4" [19 mm]	Ø 9/16" [14 mm]	Ø 1-1/4" [32 mm]

The measurements shown are for reference only. Products and specifications shown are subject to change without notice.