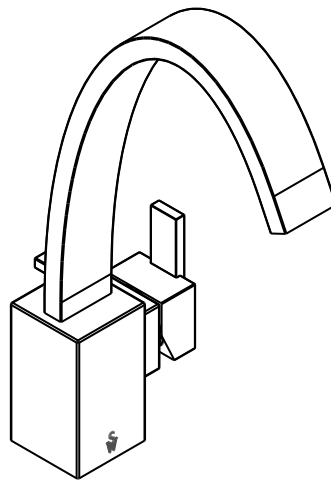




SHERLE WAGNER
architectural

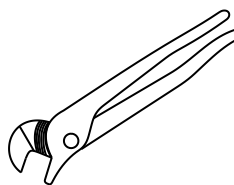
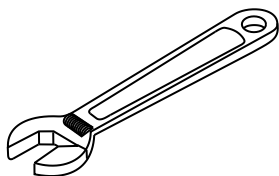
INSTALLATION GUIDE

Aqueduct 1H Lavatory



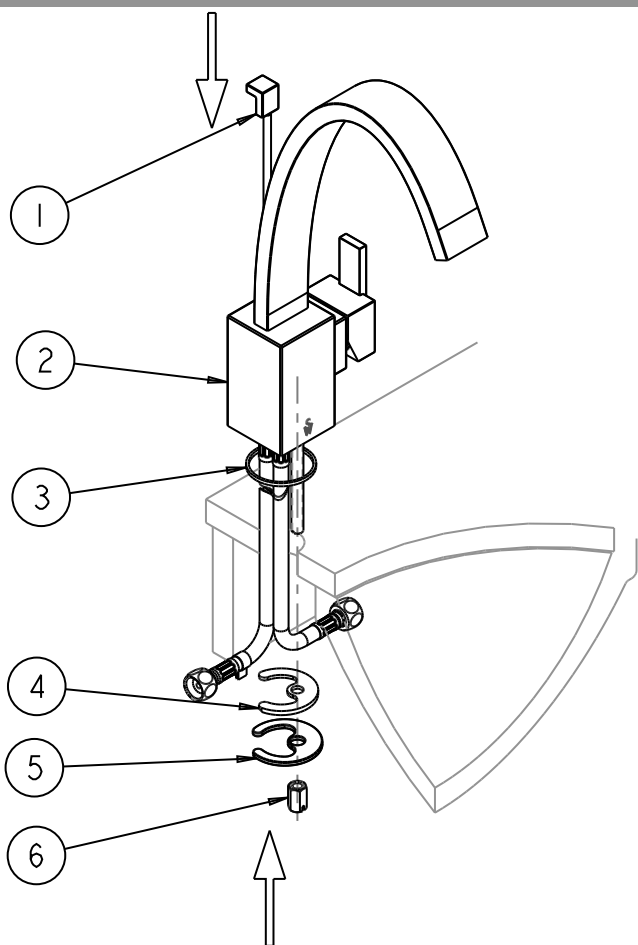
102-SHL

Installation tools that may be needed:



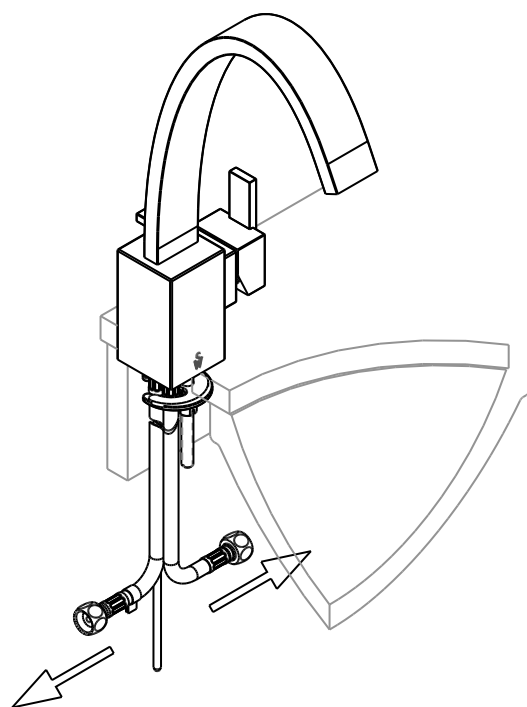
102SHL Spout Installation

1



1. Insert spout assembly (2) through deck and ensure that counter gasket (3) is properly seated in spout body.
2. Insert lift rod assembly (1) through hole on back of spout.
3. Slide rubber bracket (4) and metal bracket (5) onto spout shank and thread nut (6) onto shank until spout assembly (2) is firmly in place.

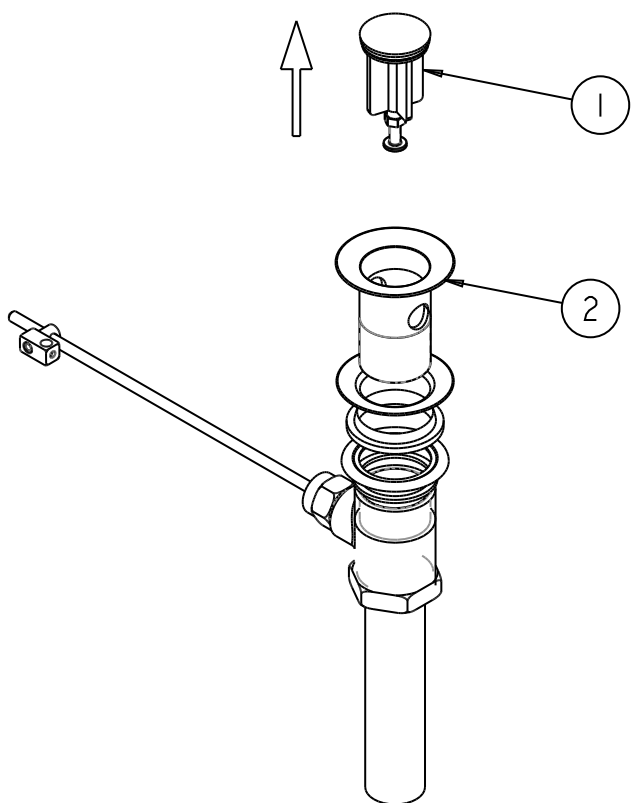
2



1. Make connections to water supply lines.

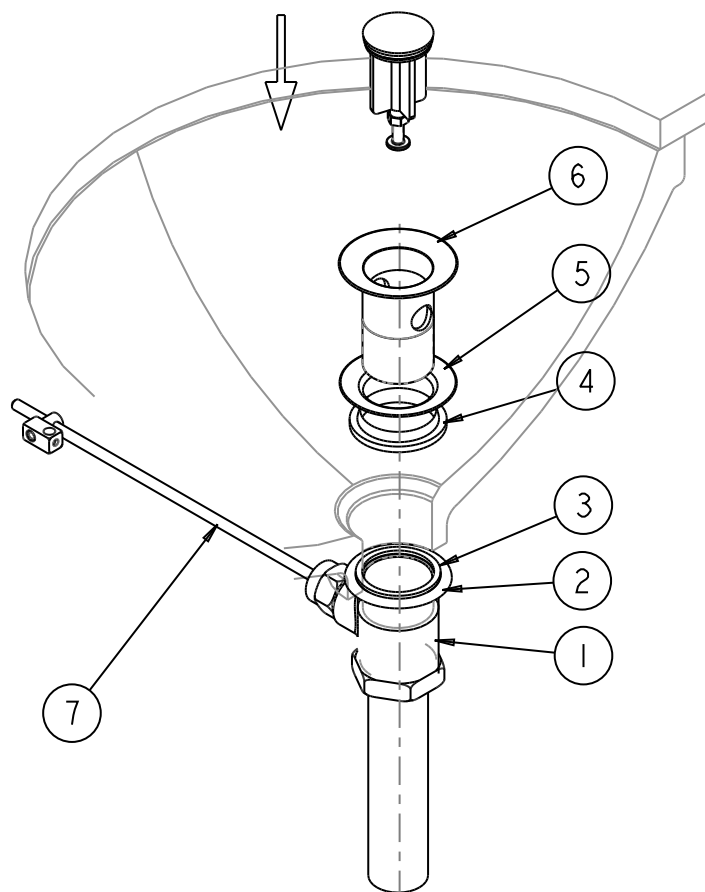
Standard Pop-Up Waste Installation

3



1. Remove stopper (1) and flange (2).

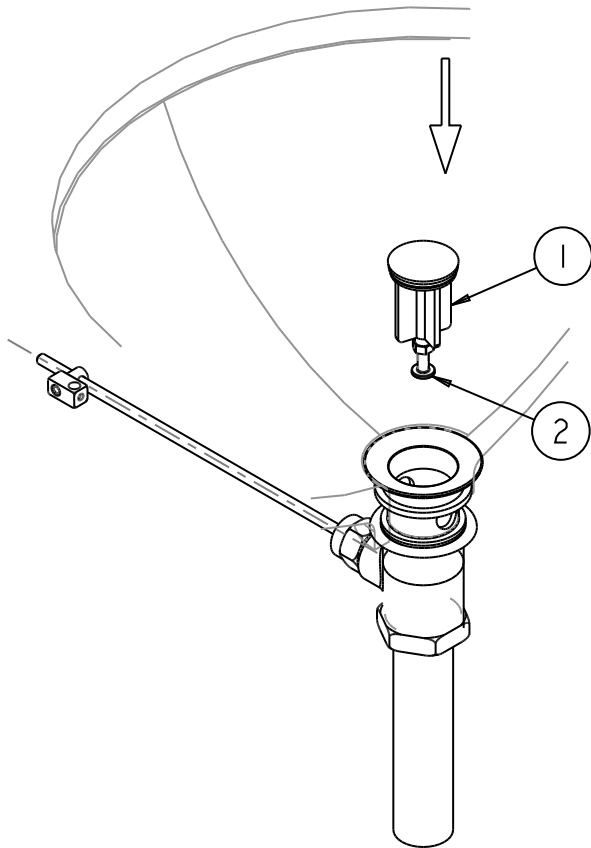
4



1. Place rubber gasket (3) and washer (2) onto body (1).
2. Slide gasket (4) and rubber washer (5) onto flange (6). NOTE: Rubber washer (5) can be replaced with caulking or other suitable sealing for the sink material.
3. Screw flange (6) into body (1).
IMPORTANT: PIVOT ROD (7) MUST POINT BACK TOWARDS SPOUT LIFT ROD.

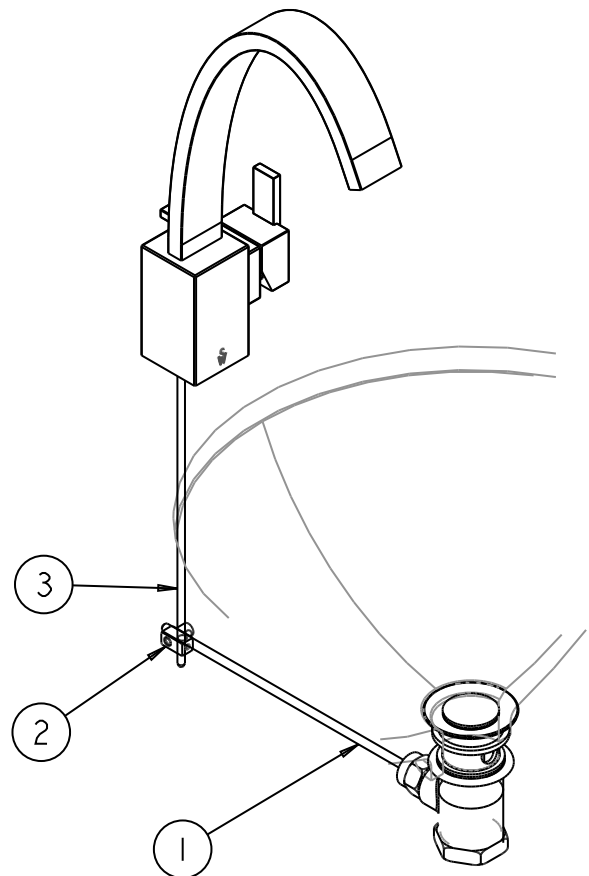
Standard Pop-Up Waste Installation

5



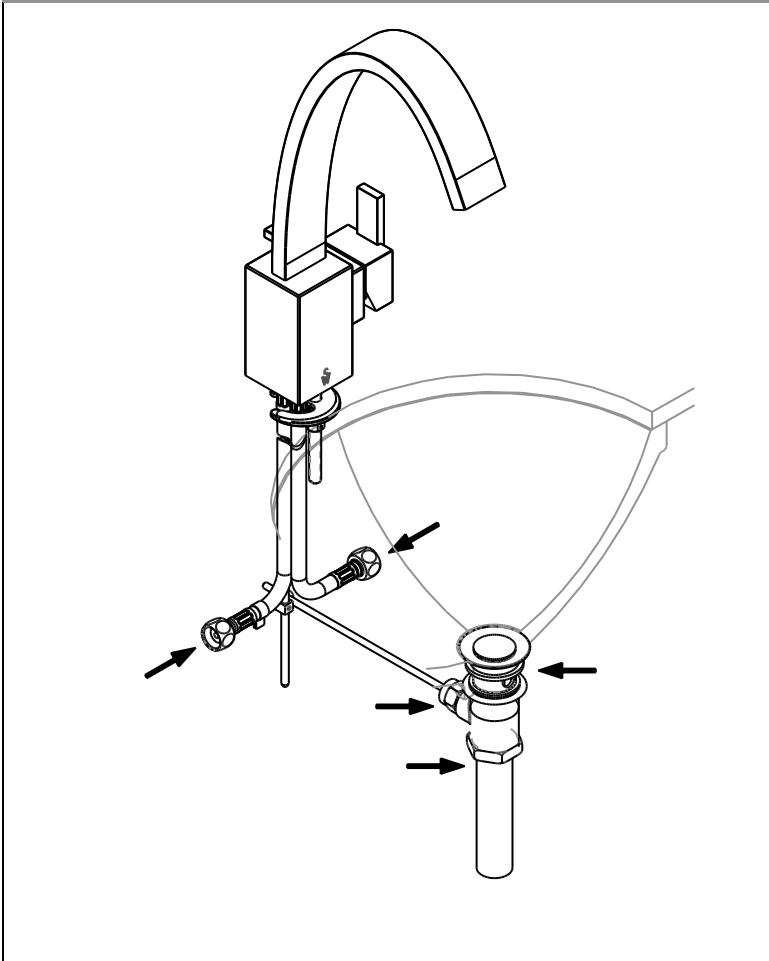
3. Insert the stopper (1). Adjust stopper screw (2) as needed to allow for proper operation.

6



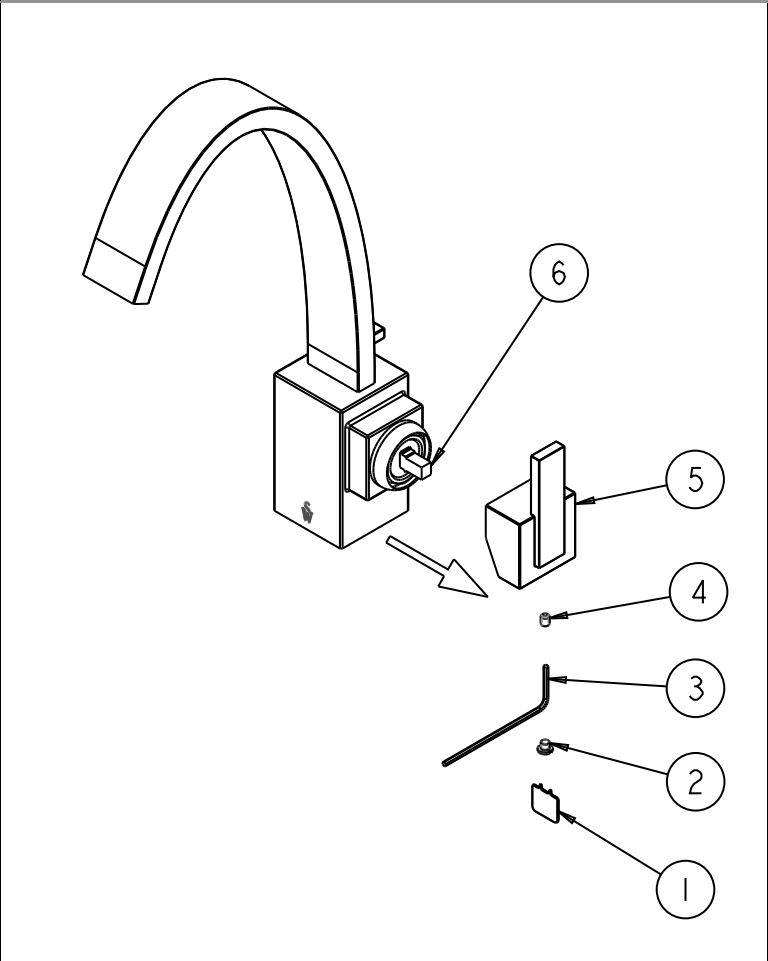
1. Push pivot rod (1) down to place pop-up in full open position. Check that lift rod (3) is in full down position.
2. Attach pivot rod (1) to lift rod (3) using adapter (2).
3. Connect drain pipe to bottom of pop-up waste.

7



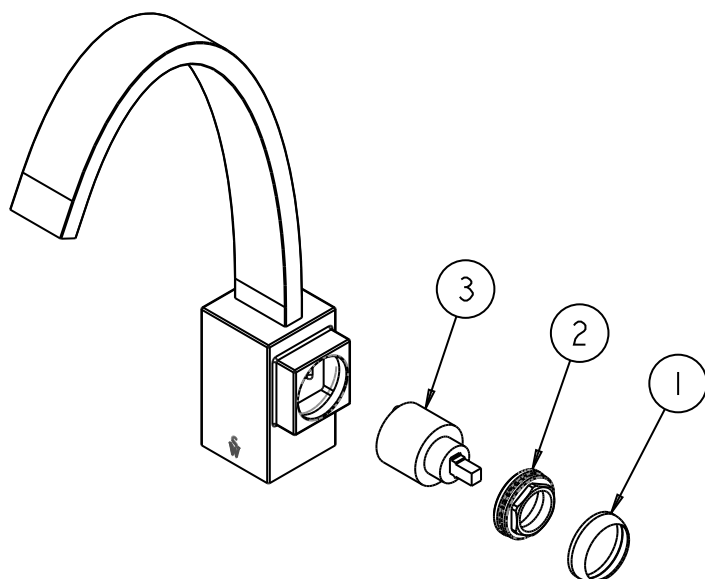
1. Turn faucet handles to full open position and flush lines. Check all connections at arrows for leaks. Retighten connections if necessary.

Cartridge Replacement - 1



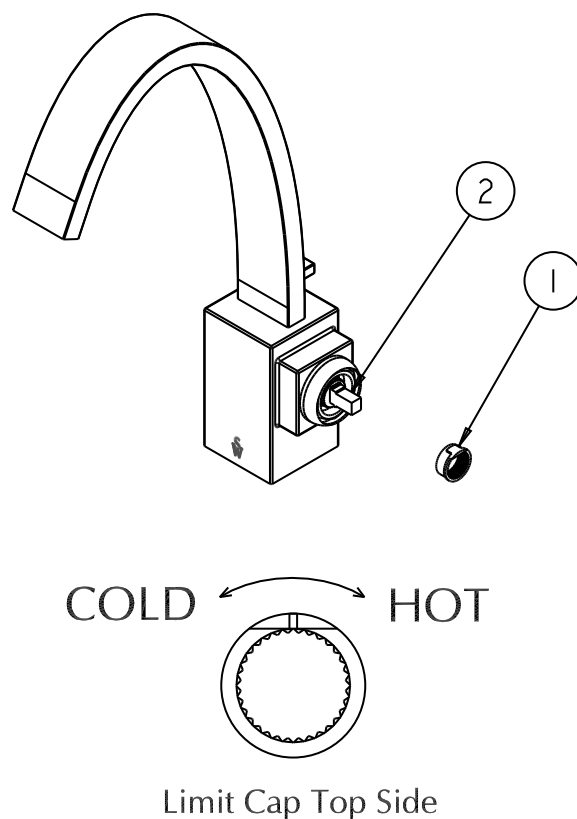
1. Using the included wrench (1), unthread the screw cap (2) at bottom of handle assembly (5).
2. Using included hex wrench (3), unthread set screw (4) from handle assembly (5).
3. Slide handle assembly (5) out of the cartridge stem (6).

Cartridge Replacement - 2



1. Unthread bonnet (1) by hand.
2. Using a 28mm socket (not supplied), unthread lock nut (2) from body.
3. Pull out cartridge (3) from body. Insert new cartridge.
4. Using 28mm socket (not supplied), thread lock nut (2) into body and thread bonnet (1) by hand.
5. Install handle assembly.

Temperature Limit Stop Adjustment

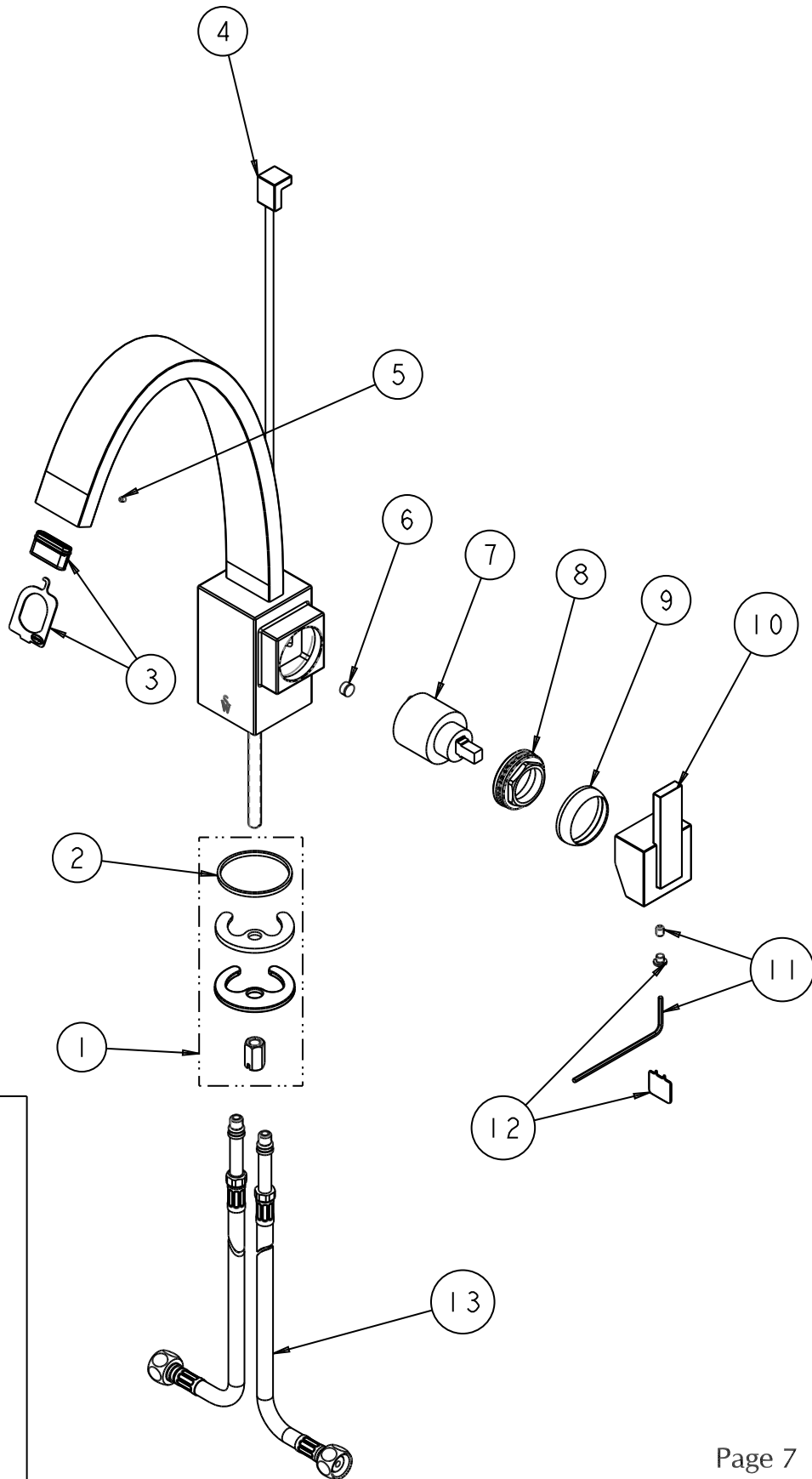


1. Remove handle by following Step 1 of the cartridge replacement instructions on previous page.
2. Pull temperature limit cap (1) off top of cartridge (2).
3. Rotate temperature limit stop (1) clockwise to increase temperature and rotate counterclockwise to decrease.
4. Place temperature limit cap (1) back on cartridge (2), then re-assemble handle to cartridge.
5. Rotate handle to check that temperature is to desired high limit. Readjust temperature limit stop if necessary.

102-SHL Parts List

Item	Part Number	Description
1	10636	Mounting Kit
2	10018	Gasket
3	10619	Aerator & Wrench Kit
4	10469*	Lift Rod Assembly
5	10406	M3 x 4 Set Screw
6	10328	1.5 GPM Flow Restrictor
7	10404	Cartridge
8	10534	Lock Nut
9	10533*	Bonnet
10	10304*	Handle Assembly
11	10734	10-24X.25 Screw Kit
12	10735*	Screw Cover Kit
13	10425	Supply Hose

* SPECIFY FINISH WHEN ORDERING



10131* Standard Pop-up Assembly

