

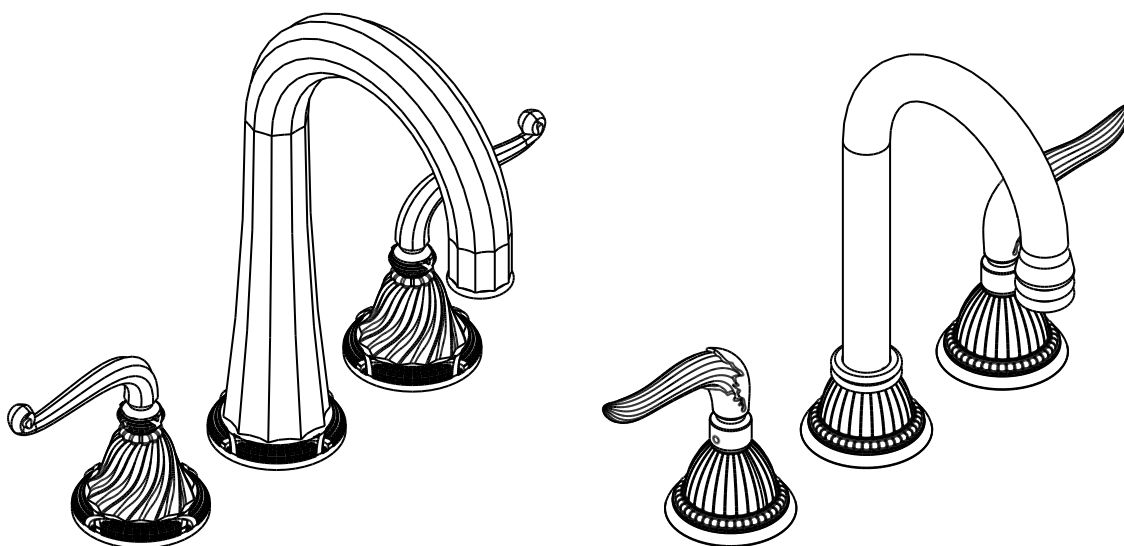
S H E R L E



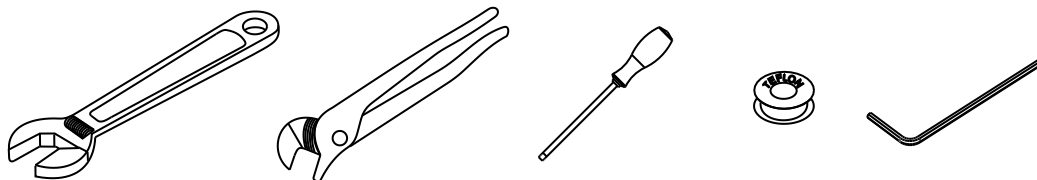
W A G N E R  
INTERNATIONAL

## INSTALLATION GUIDE

## Bar Faucet

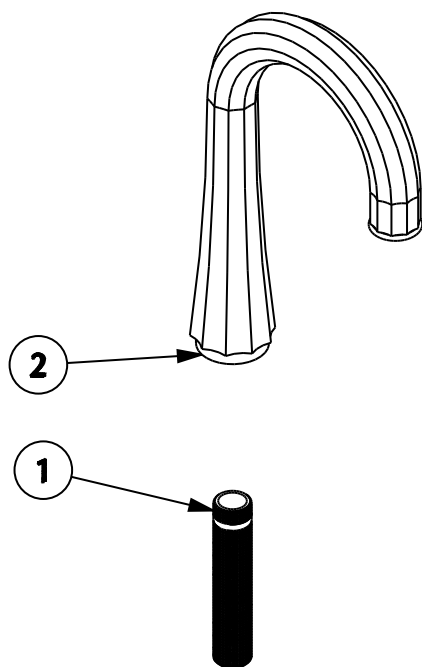


### Installation tools that may be needed:



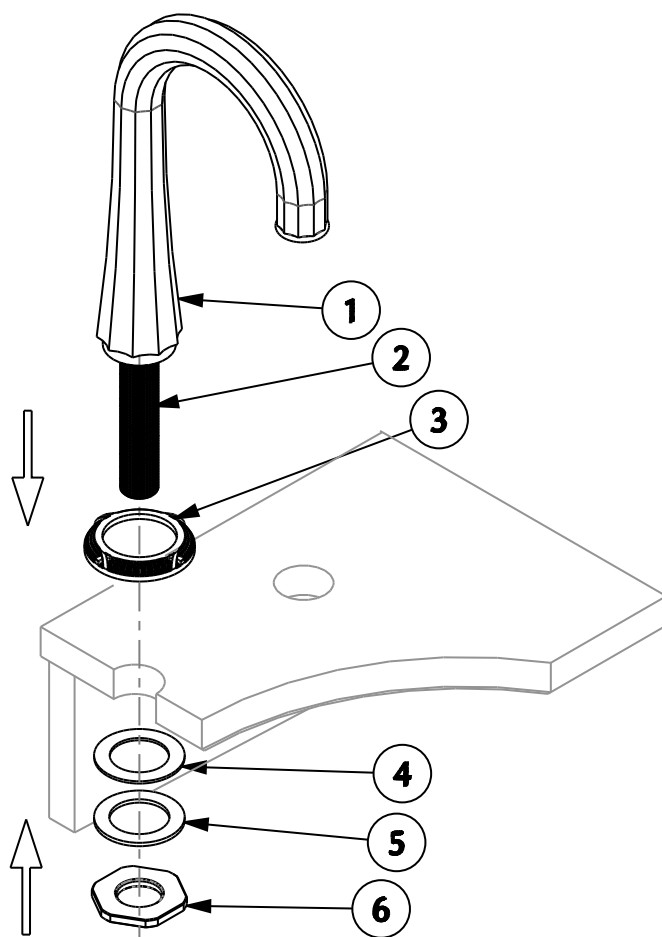
# Classic 0813/0821 and Ribbon & Reed 0818 Spout Installation

1A



**1. Apply thread sealant to top of spout nipple (1) and screw into bottom of spout (2).**

2A



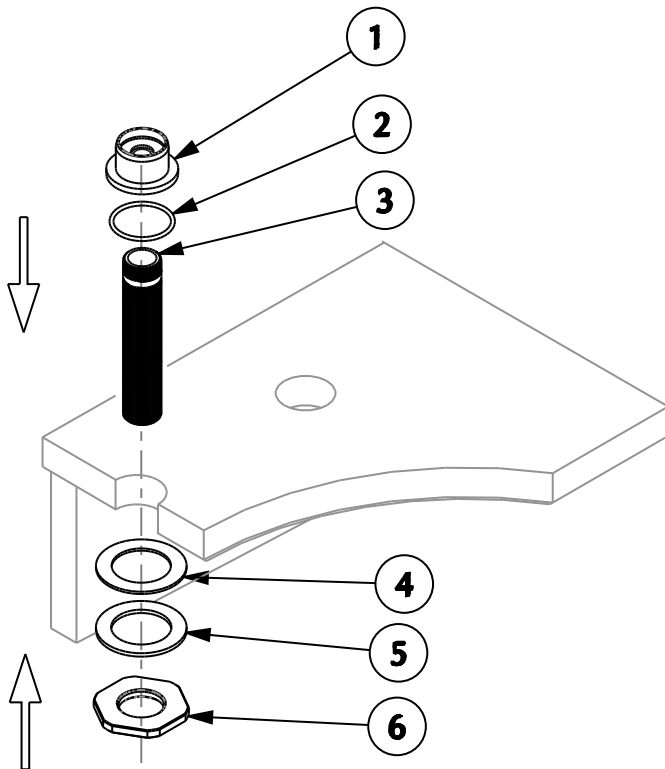
**1. Mount spout base ring (3) onto spout (1) and mount spout assembly over center hole of sink or counter top.**

**2. Slide rubber washer (4) and metal washer (5) onto nipple (2) from under counter.**

**3. Thread nut (6) onto nipple (2) and wrench tighten, making sure spout is properly aligned.**

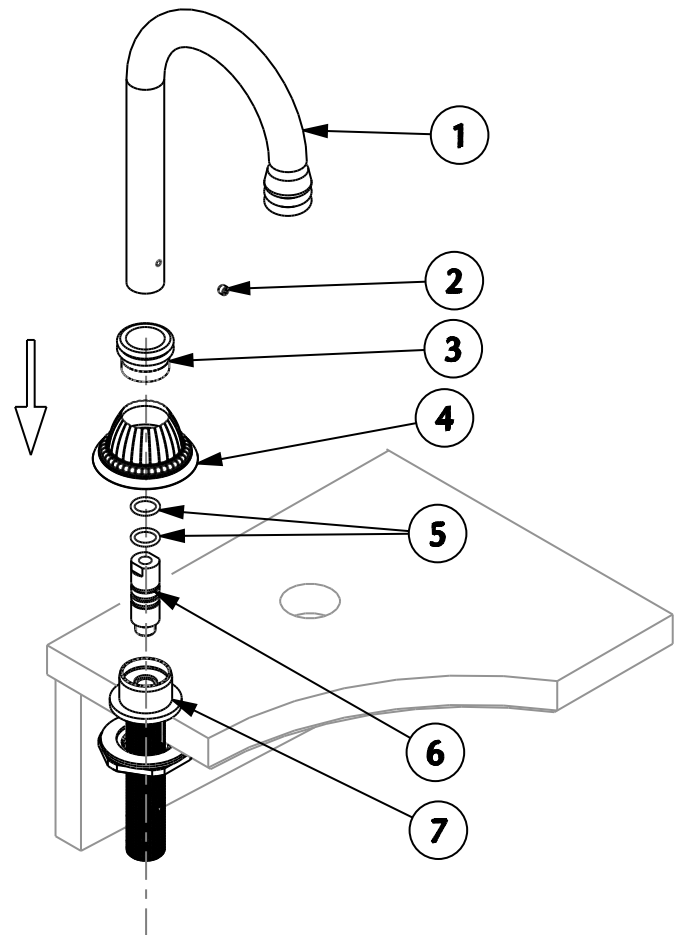
# Standard 0800 Spout Installation

**1B**



1. Apply thread sealant to top of spout nipple (3) and screw into base (1).
2. Place base O ring (2) into groove of base (1). Insert spout nipple (3) into center hole of sink or counter top.
3. Slide rubber washer (4) and metal washer (5) onto nipple (3) from under the counter.
4. Thread nut (6) onto nipple (3) and wrench tighten.

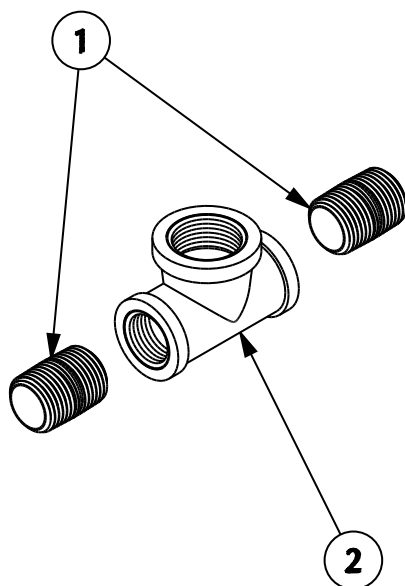
**2B**



1. Apply thread sealant to nipple (6) and thread into base (7) and wrench tighten.
2. Install O rings (5) in grooves of nipple (6). Lubricate O rings (5) and internal surface of spout (1).
3. Apply anti-seize compound to internal thread of base (7)
4. Slide nut (3) and escutcheon (4) onto spout (1) taking care not to damage finish on spout (1).
5. Insert spout (1) onto nipple (6) taking care not to damage O rings (5).
6. Adjust spout (1) so center groove in nipple (6) is lined up with set screw hole of spout (1).
7. Thread set screw (2) into spout (1) and wrench tighten. Screw (2) must be flush with surface of spout (1).
8. Apply a light coat of anti-seize compound to thread of nut (3) and screw nut (3) into base (7) and hand tighten.

# Spout Tee Connect Installation

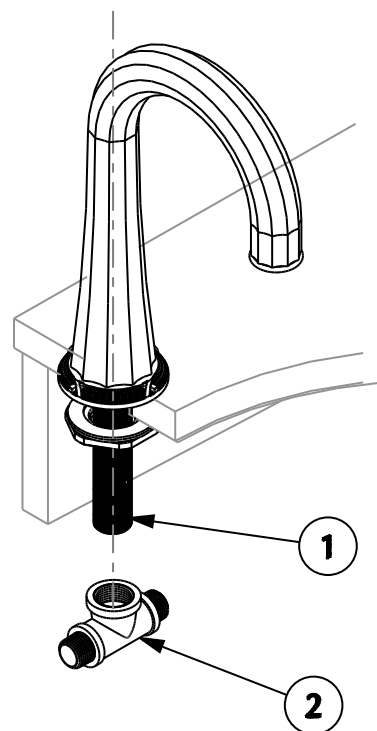
3



**1. Apply thread sealant to thread of tee (2) and nipples (1).**

**2. screw nipples (1) into tee (2).**

4



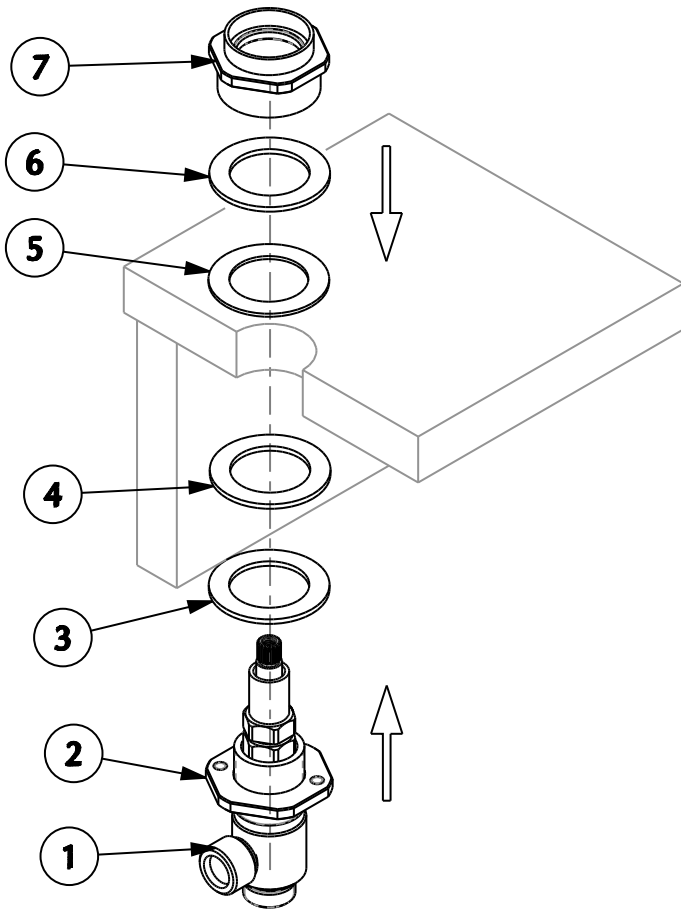
**1. Apply thread sealant to bottom of nipple (1).**

**2. Screw tee assembly (2) onto bottom of nipple (1) tightly.**



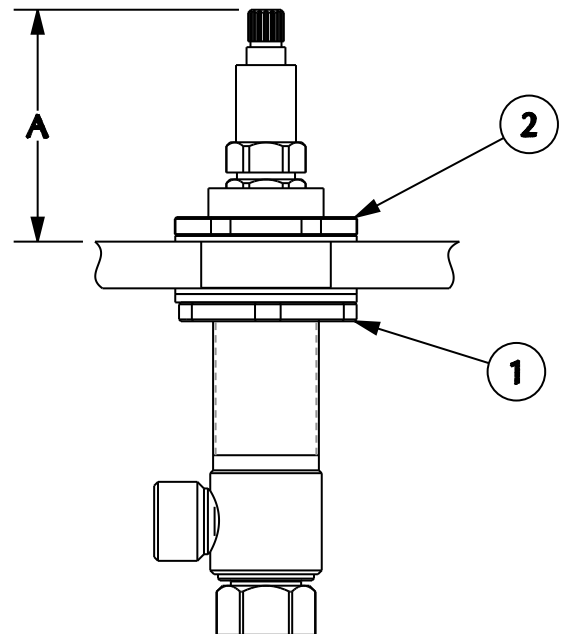
# End Valve Installation

5



1. Thread bottom mounting nut (2) onto cold end valve (1 - marked with blue label).
2. Slide metal washer (3) and rubber gasket (4) onto end valve (1), then place end valve (1) up through counter from below.
3. From above the deck, slide rubber gasket (5) and metal washer (6) over end valve (1), then thread valve top mounting nut (7) onto end valve (1). Make sure rubber gasket (5) is properly seated.

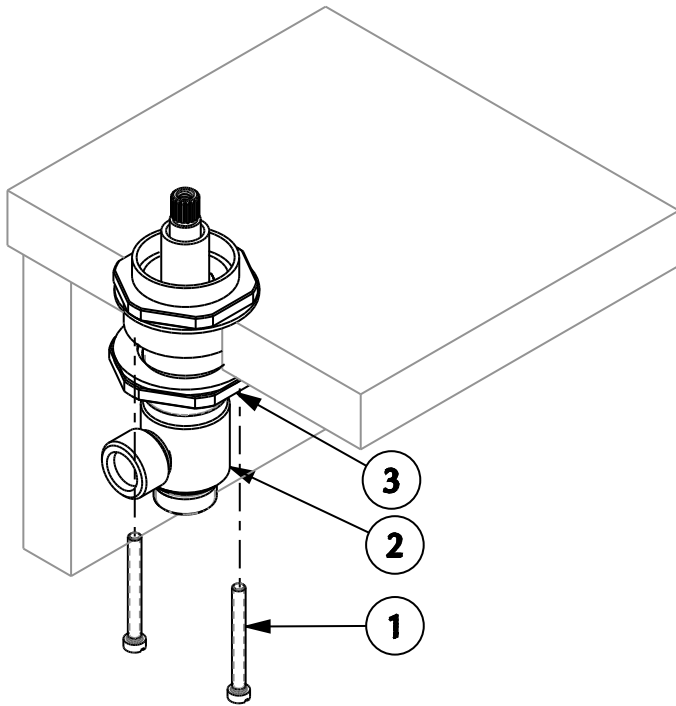
6



1. Referencing the chart on page 7, adjust the bottom mounting nut (1) and top mounting nut (2) as needed to achieve height "A" per the model being installed.

## End Valve Installation

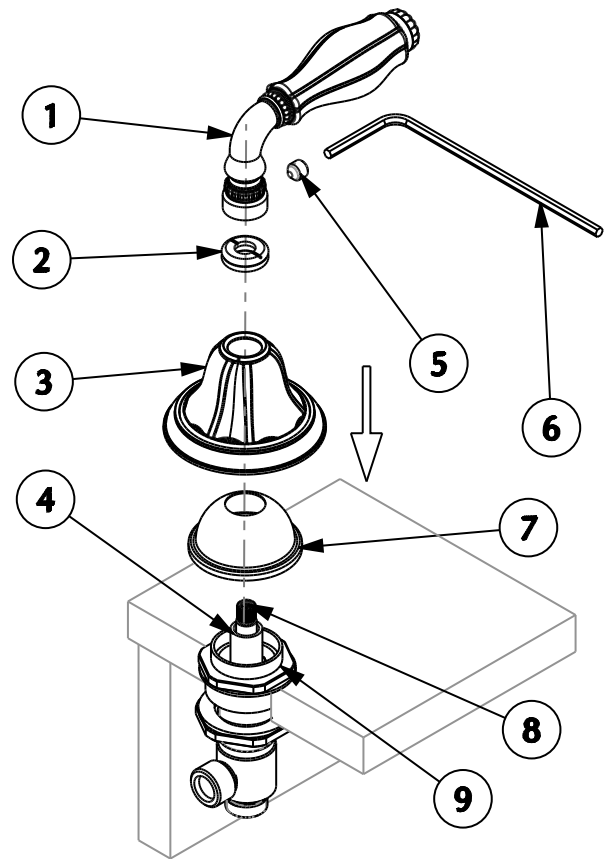
7



1. Thread jack screws (1) into bottom mounting nut (3) and tighten jack screws evenly until end valve (2) is secured. Adjust bottom mounting nut (3) as needed to allow for clearance for mounting the jack screws.
2. Turn cartridge stem counter-clockwise (clockwise for hot side) until stem stops.

## Handle Installation

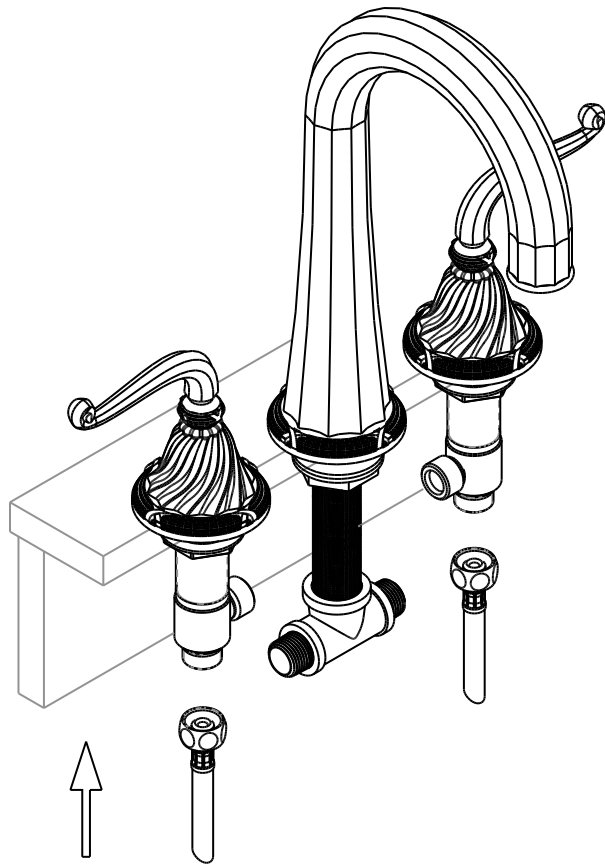
8



1. **OPTIONAL:** For sets with a translucent escutcheon, place valve cover (7) over valve (9) until valve cover (7) sits on deck.
2. Place escutcheon (3) over valve (9).
3. Thread escutcheon nut (2) onto allthread (4) until secure and escutcheon (3) does not move.  
  
**NOTE:** Some models utilize an escutcheon nut (2) that threads directly into the top of end valve, not the allthread (4). For these models, there will be no allthread (4).
4. Mount lever/knob (1) onto cartridge stem (8) and secure by tightening set screw (5) with hex wrench (6).
5. Turn lever to full off position and check to make sure it is straight. If it requires adjustment, remove set screw (5) and re-install lever/knob (1) to proper position, then re-install set screw (5).

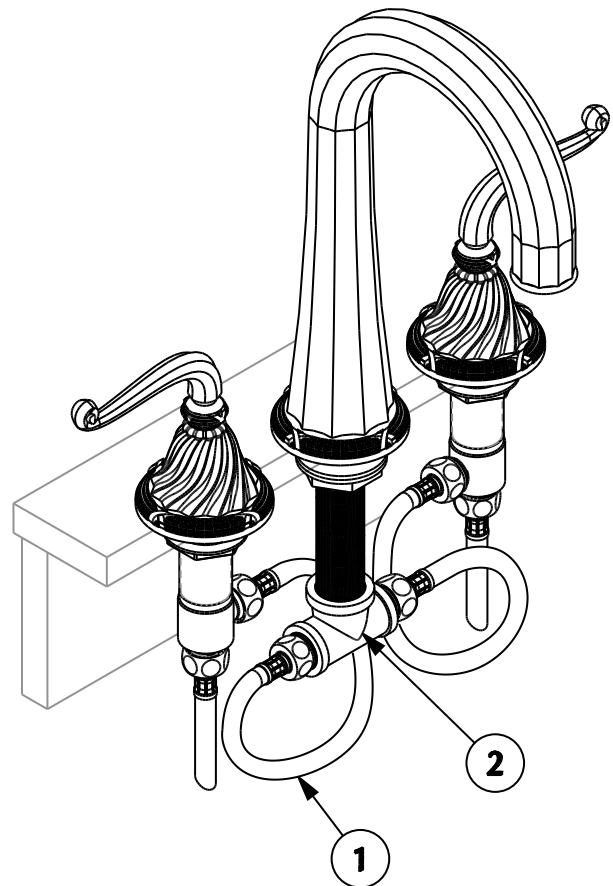
# Water Supply Connection

9



**1. Make connections to water supply lines.  
(Supply lines not included.)**

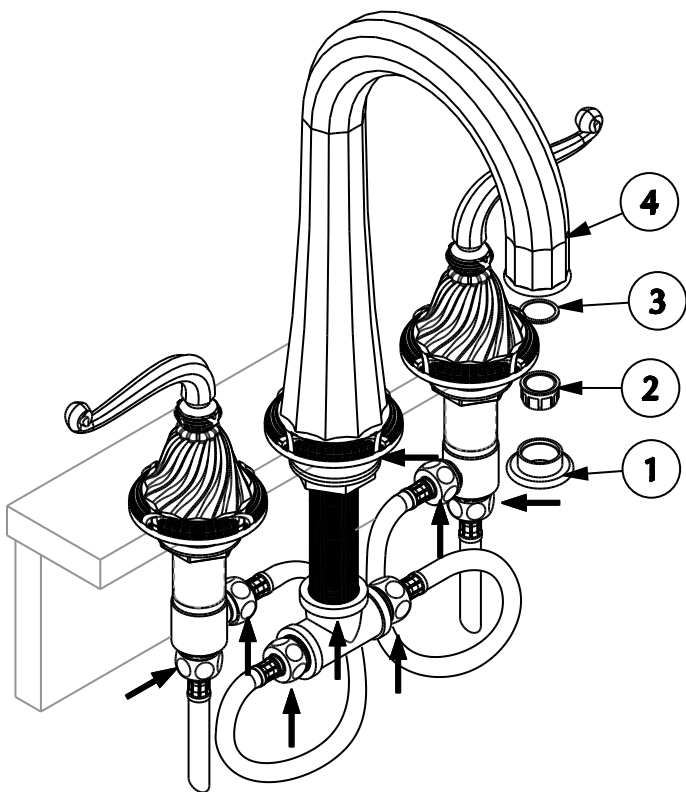
10



**1. Connect supply hoses (1) (Included) to spout inlet tee (2). Hand tighten hose connections plus 1/4 turn with a wrench.**

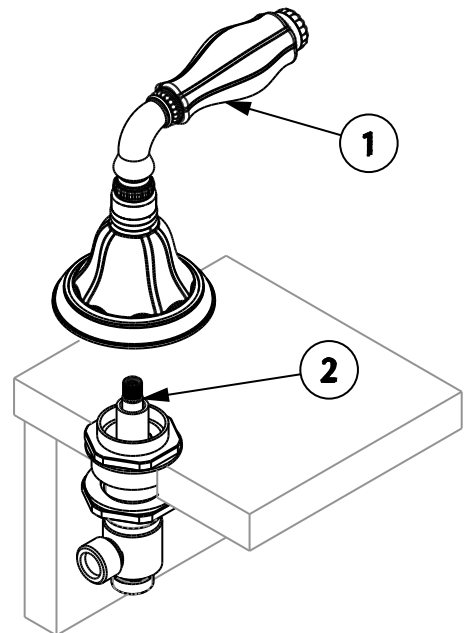
# Flushing System

11



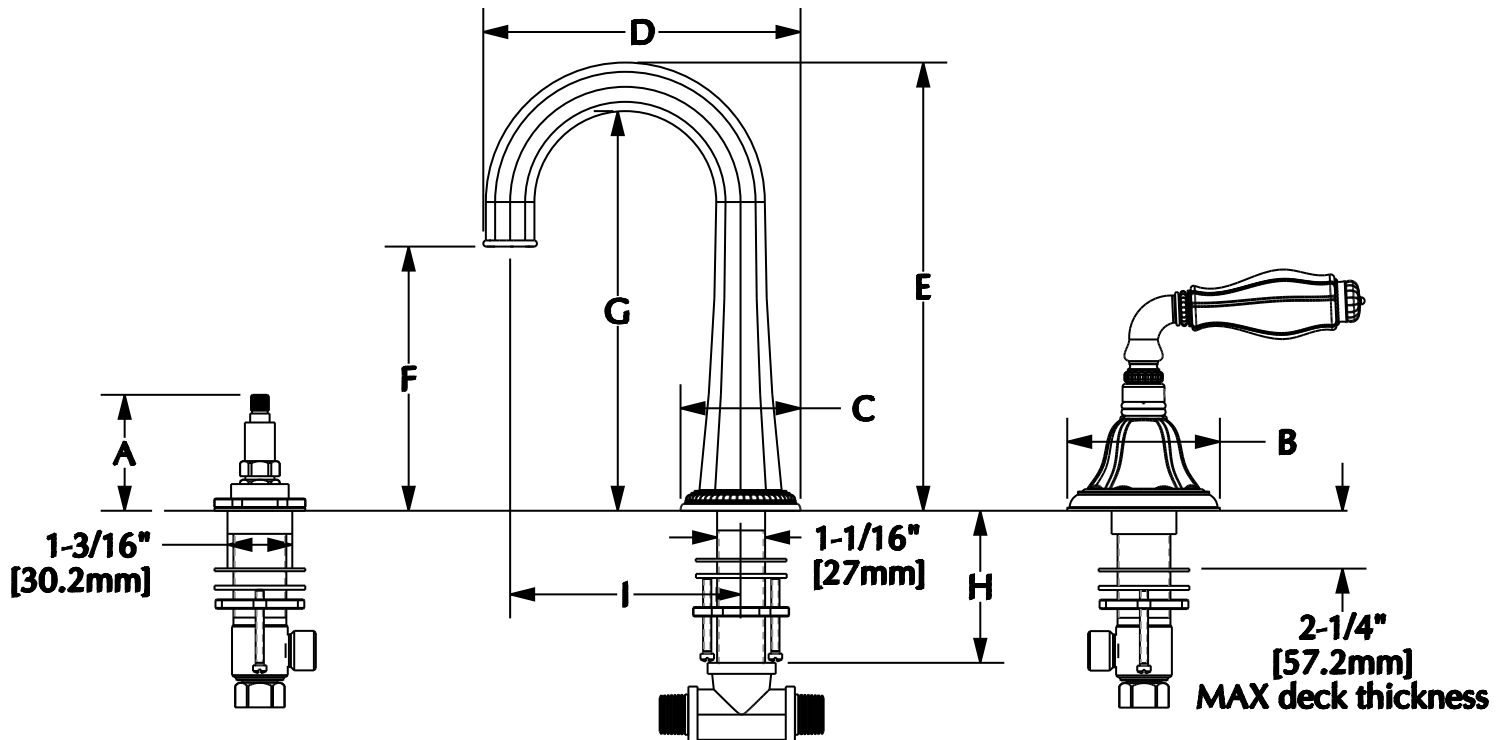
1. Remove aerator housing (1), aerator insert (2) and gasket (3) from spout tip (4).
2. Turn faucet handles to full open position and flush lines. Check all connections at arrows for leaks. Retighten connections if necessary.
3. Reinstall gasket (3), aerator insert (2) and housing (1).

## Cartridge Replacement



1. Remove handle assembly (1).
2. Using 3/4" socket (not supplied), unthread cartridge (2) from body.
3. Using 3/4" socket, install new cartridge into valve body.

# Bar Faucet Set Dimensions



## Handle Dimensions

Model No.	A	B
0907	2\"	2-1/2\"
	(50.8mm)	(63.5mm)
0910	2-3/8\"	2-3/4\"
	(60.3mm)	(69.9mm)
0912	2-5/8\"	2-7/8\"
	(66.7mm)	(73mm)
0913	2-3/8\"	2-7/8\"
	(60.3mm)	(73mm)
0914	2-1/4\"	3-1/4\"
	(57.2mm)	(82.6mm)
0915	2-5/8\"	2-3/4\"
	(66.7mm)	(69.9mm)
0916	1-3/4\"	2-1/4\"
	(44.3mm)	(57.2mm)
0917	2-5/8\"	2-3/4\"
	(66.7mm)	(69.9mm)
0918	2-5/8\"	2-3/4\"
	(66.7mm)	(69.9mm)
0919	2-3/8\"	2-3/4\"
	(60.3mm)	(69.9mm)
0920	2-5/8\"	2-3/4\"
	(66.7mm)	(69.9mm)
0921	2-5/8\"	2-3/4\"
	(66.7mm)	(69.9mm)
0923	2-3/8\"	2-7/8\"
	(60.3mm)	(73mm)
0931	2-3/8\"	2-3/4\"
	(60.3mm)	(69.9mm)
0932	2-3/8\"	2-3/4\"
	(60.3mm)	(69.9mm)
0933	2-1/4\"	2-3/4\"
	(57.2mm)	(69.9mm)
0934	2-3/8\"	2-5/8\"
	(60.3mm)	(66.7mm)
0980	2-3/8\"	2-7/8\"
	(60.3mm)	(73mm)
0981	2-3/8\"	2-7/8\"
	(60.3mm)	(73mm)
0990	2-3/4\"	2-7/8\"
	(69.9mm)	(73mm)
0991	2-3/4\"	2-7/8\"
	(69.9mm)	(73mm)
0992	2-3/4\"	2-7/8\"
	(69.9mm)	(73mm)
0993	2-3/4\"	2-7/8\"
	(69.9mm)	(73mm)

\* INCLUDES ALL PORCELAIN TRIM  
 \*\* INCLUDES ALL ONYX, ROSE QUARTZ, ROCK CRYSTAL AND AMETHYST  
 \*\*\* INCLUDES MALACHITE, TIGER EYE, LAPIS LAZULI AND RHODOCHROSITE

## Spout Dimensions

Item:	Description	C	D	E*	F	G	H	I*
0800CL	Standard w/ Classic Escutcheon	2-3/4\"	6\"	10\"	5-1/2\"	9-1/4\"	6\"	5-1/4\"
		(69.9mm)	(152.4mm)	(254mm)	(139.7mm)	(235mm)	(101.6mm)	(133.4mm)
0800RR	Standard w/ R & R Escutcheon	2-7/8\"	6\"	10\"	5-1/2\"	9-1/4\"	6\"	5-1/4\"
		(73mm)	(152.4mm)	(254mm)	(139.7mm)	(235mm)	(101.6mm)	(133.4mm)
0800KN	Standard w/ Knurled Escutcheon	2-1/2\"	6\"	10\"	5-1/2\"	9-1/4\"	6\"	5-1/4\"
		(63.5mm)	(152.4mm)	(254mm)	(139.7mm)	(235mm)	(101.6mm)	(133.4mm)
0800AC	Standard w/ Acorn Escutcheon	2-3/4\"	6\"	10\"	5-1/2\"	9-1/4\"	6\"	5-1/4\"
		(69.9mm)	(152.4mm)	(254mm)	(139.7mm)	(235mm)	(101.6mm)	(133.4mm)
0800HR	Standard w/ Horizon Escutcheon	2-7/8\"	6\"	10\"	5-1/2\"	9-1/4\"	6\"	5-1/4\"
		(73mm)	(152.4mm)	(254mm)	(139.7mm)	(235mm)	(101.6mm)	(133.4mm)
0800GR	Standard w/ Grey Escutcheon	2-7/8\"	6\"	10\"	5-1/2\"	9-1/4\"	6\"	5-1/4\"
		(73mm)	(152.4mm)	(254mm)	(139.7mm)	(235mm)	(101.6mm)	(133.4mm)
0813BAR	Classic Smooth	2-3/4\"	9\"	12\"	7\"	10-1/4\"	6\"	6\"
		(69.9mm)	(228.6mm)	(304.8mm)	(177.8mm)	(260.4mm)	(101.6mm)	(152.4mm)
0818BAR	Ribbon and Reed A	2-7/8\"	9\"	12\"	6-3/4\"	10-1/4\"	6\"	6\"
		(73mm)	(228.6mm)	(304.8mm)	(171.5mm)	(260.4mm)	(101.6mm)	(152.4mm)
0821BAR	Classic C Textured	2-3/4\"	9\"	12\"	7\"	10-1/2\"	6\"	6\"
		(69.9mm)	(228.6mm)	(304.8mm)	(177.8mm)	(266.7mm)	(101.6mm)	(152.4mm)

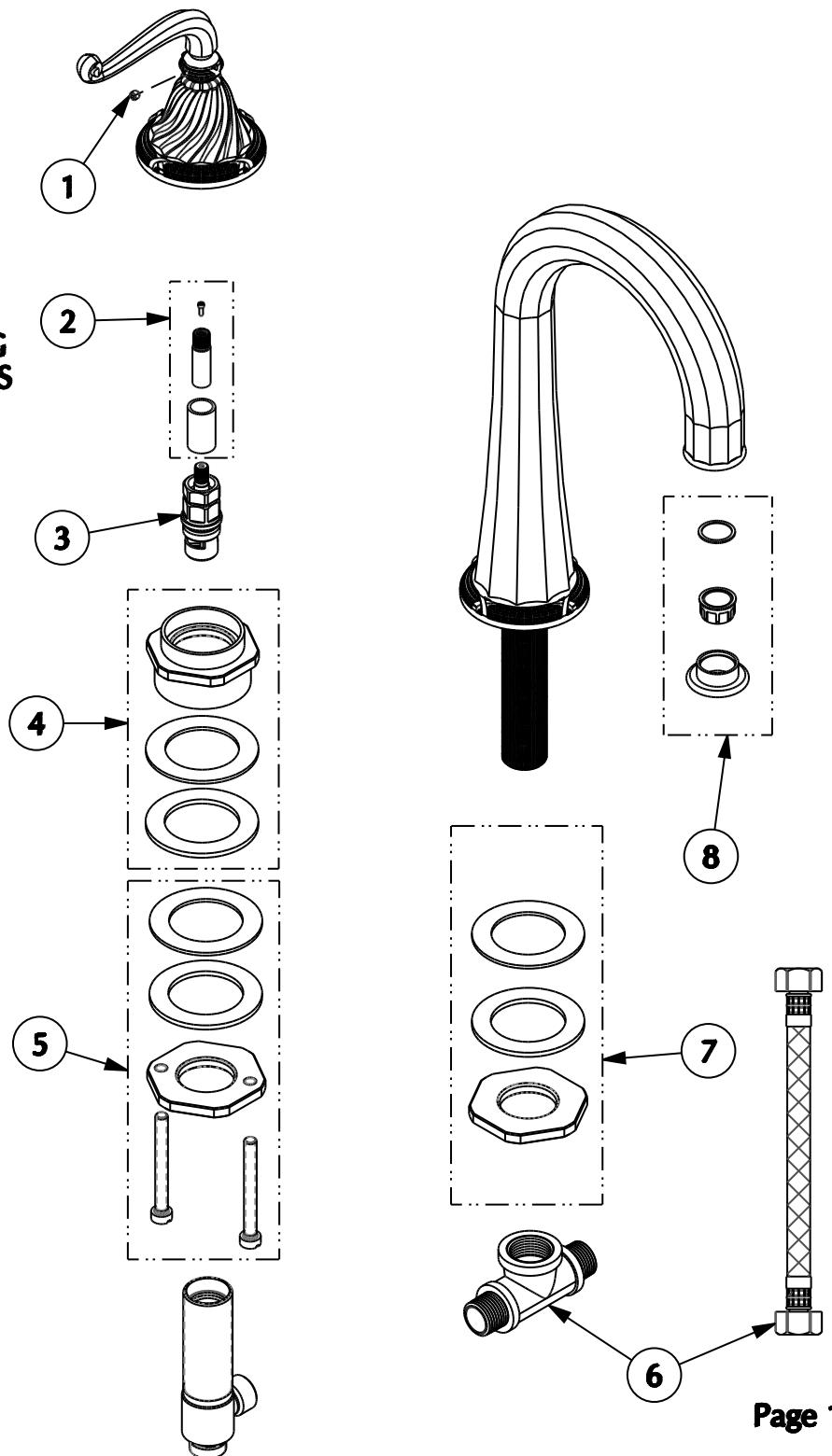
E - INDICATES HIGHEST POINT  
 I - CENTER OF INLET TO CENTER OF OUTLET

# Classic 0813/0821 and Ribbon & Reed 0818 Bar Faucet Parts List

## Part List

Item	Part Number	Description
1	14272	Set Screw Kit
2	EXT-KIT-DKMT*	Deckmount Extension Kit
3	CART-1/2-RH	Cartridge - Hot
	CART-1/2-LH	Cartridge - Cold
4	15254	Top Mounting Kit
5	10583	End Valve Mounting Kit
6	11499	Flex-Tee Kit
7	10720	Spout Mounting Kit
8	VARIOUS**	Aerator Kit

\* SPECIFY FINISH WHEN ORDERING  
 \*\* CONTACT SHERLE WAGNER SALES REPRESENTATIVE



# Standard Bar Faucet Parts List

## Part List

Item	Part Number	Description
1	14272	Set Screw Kit
2	EXT-KIT-DKMT*	Deckmount Extension Kit
3	CART-1/2-RH	Cartridge - Hot
	CART-1/2-LH	Cartridge - Cold
4	15254	Top Mounting Kit
5	10583	End Valve Mounting Kit
6	11499	Flex-Tee Kit
7	10720	Spout Mounting Kit
8	12398	Nipple
9	12996	O Ring
10	12759	Base
11	12760	Connector
12	13373	O Ring
13	14489	Set Screw 10-32 X 1/8"
14	VARIOUS**	Aerator Kit

\* SPECIFY FINISH WHEN ORDERING  
 \*\* CONTACT SHERLE WAGNER SALES REPRESENTATIVE

