

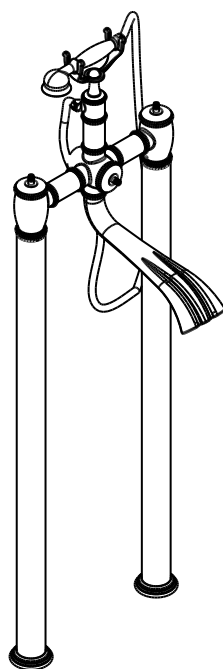
S H E R L E



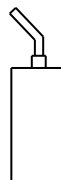
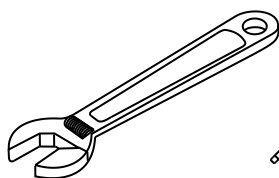
W A G N E R  
INTERNATIONAL

## INSTALLATION GUIDE

## Exposed Tub Shower Set

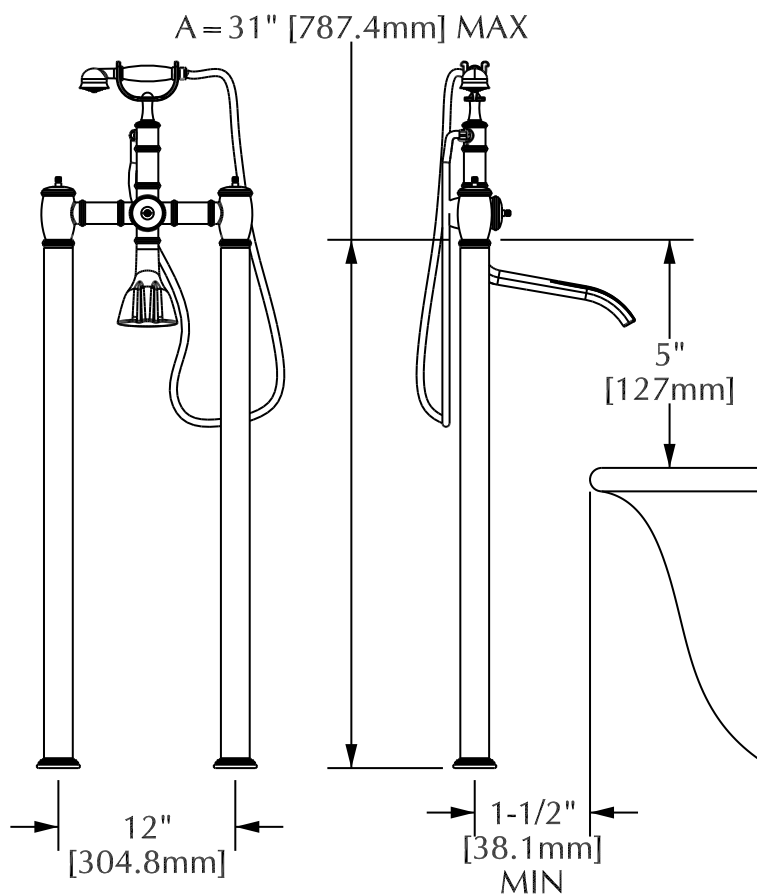


Installation tools that may be needed:



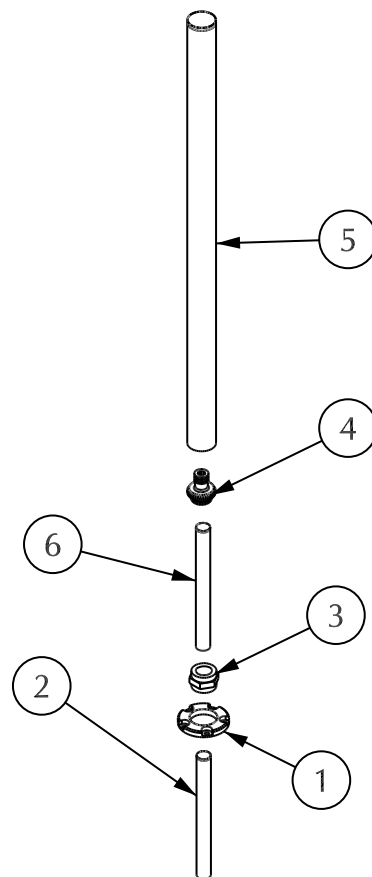
# Exposed Tub Floor Mount Set Installation

1A



1. Determine location for installing tub & shower set.
2. Set 3/4" supply pipes (not included) 12" [304.8mm] on center between pipes and at least 1-1/2" [38.1mm] from extreme edge line of tub.

2A

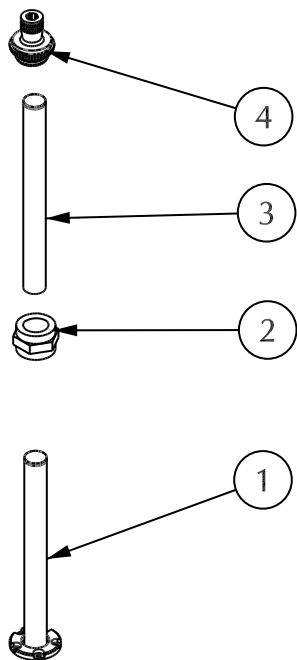


1. Secure flange (1) to floor and make sure the supply pipe (2) is on center on the hole. Screws and anchors are not supplied.
2. Mount union (3) onto supply pipe (2) protruding from floor. Supply 3/4" pipe (6) of sufficient length to achieve dimension "A" which is 5" more than the height of tub.
3. Mount quick connect fitting (4) onto supply pipe (6) and measure distance between top surface of quick connect fitting (4) and base ring (1).
4. Using a tube cutter, cut cover tube (5) to dimension recorded in Point 3 less 3/16". To avoid marring finish on tube use low tack masking tape on tube where guide wheels make contact with tube.

NOTE: Supply pipe (2), union (3) and supply pipe (6) are not supplied.

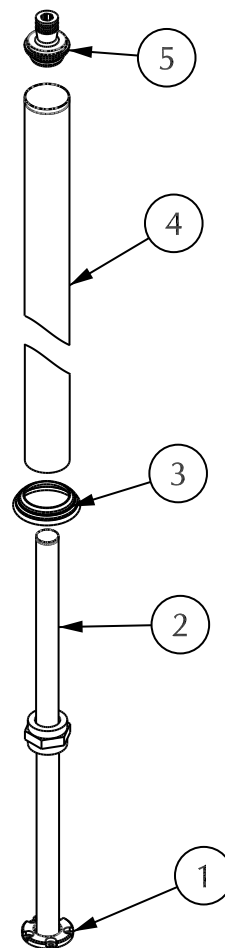
# Exposed Tub Floor Mount Set Installation

3A



1. Remove quick connect fitting (4) from top of 3/4" supply pipe (3).
2. Remove union (2).
3. Apply thread sealant to pipes (1 and 3), make final connections and tighten union (2).

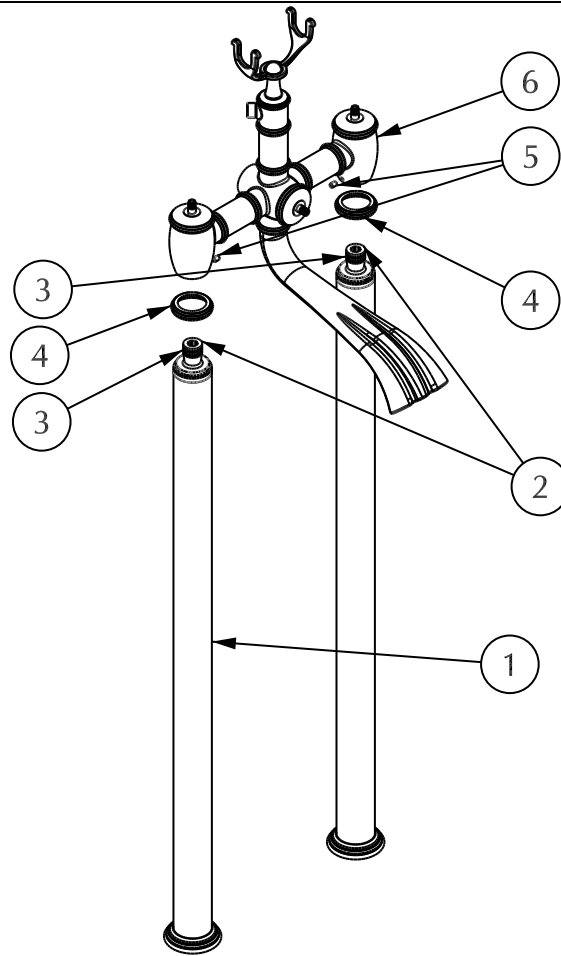
4A



1. Mount escutcheon ring (3) onto bottom of tube (4).
2. Thread the cover tube (4) into flange (1) and slide escutcheon ring (3) until it againsts floor.
3. Mount quick connect fitting (5) onto supply pipe (2) and tighten with Allen wrench.
4. Repeat step 2A to 4A for other supply pipe.

# Exposed Tub Floor Mount Set Installation

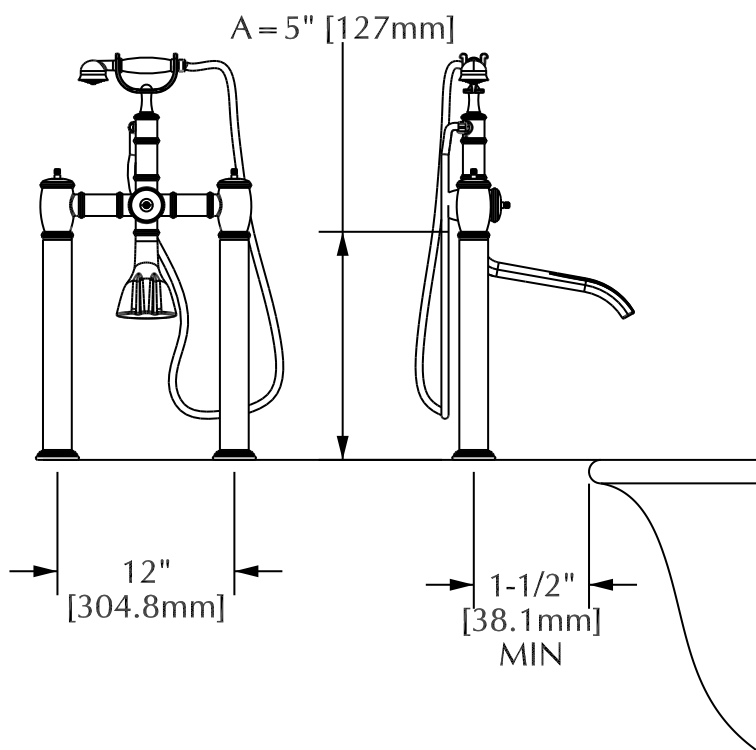
5A



1. Mount supply transition rings (4) over quick connect fitting (2), making sure that larger opening is facing down and fits over tube (1).
2. Back out set screws (5) in both hot and cold valve bodies sufficiently so that they do not interfere with or damage O rings (3) on quick connect fittings (2).
3. Lubricate O rings (3) on quick connect fittings (2) and carefully mount exposed valve assembly (6) onto quick connect fittings (2) taking care not to damage O rings (3).
4. Apply some downward pressure to valve assembly (6) and tighten set screws (5) with Allen wrench (not supplied)

# Exposed Tub Deck Mount Set Installation

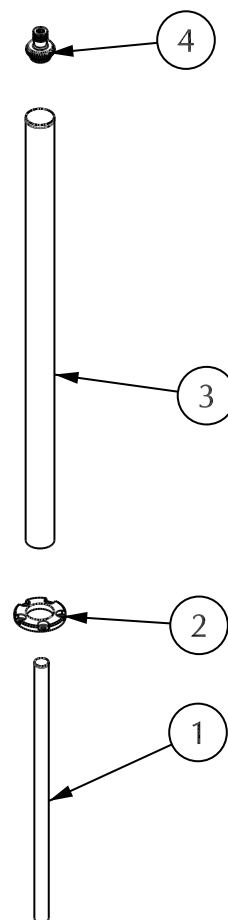
1B



1. Determine location for installing tub and shower set.

2. Set 3/4" supply pipes (not included) 12" on center at least 1-1/2" from edge of tub and of sufficient length to achieve dimension "A" .

2B



1. Secure flange (2) to deck and make sure the 3/4" supply pipe (1) is on center on the hole. Screws and anchors are not supplied.

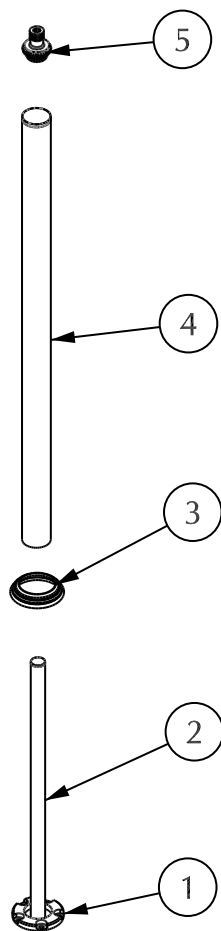
2. Mount quick connect fitting (4) onto supply pipe (1) and measure distance between top surface of quick connect fitting (4) and base ring (2).

3. Using a tube cutter, cut cover tube (3) to dimension recorded in Point 2 less 3/16". To avoid marring finish on tube use low tack masking tape on tube where guide wheels make contact with tube.

NOTE: Supply pipe (1) is not supplied.

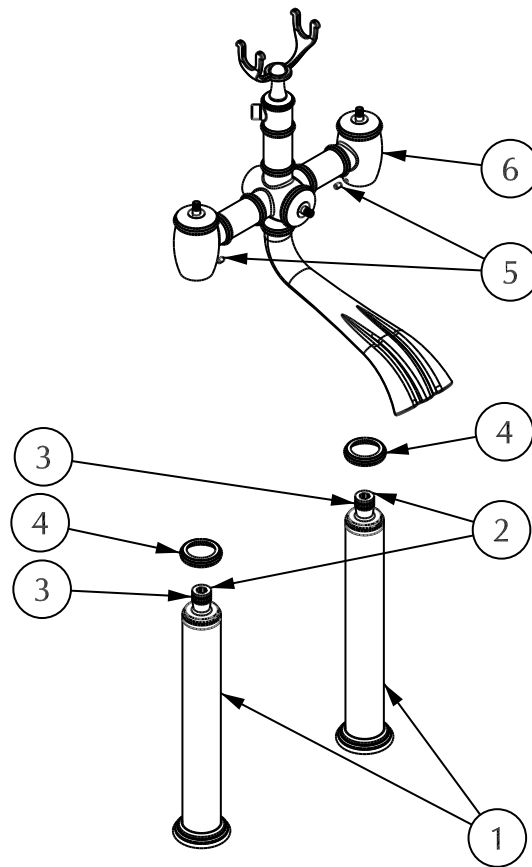
# Exposed Tub Deck Mount Set Installation

3B



1. Remove quick connect fitting (5) from 3/4" supply pipe (2).
2. Mount escutcheon ring (3) onto bottom of tube (4).
3. Thread the cover tube (4) into flange (1) and slide escutcheon ring (3) until it againsts deck.
4. Apply thread sealer to supply pipe (2) and mount quick connect fitting (5) onto supply pipe (2), tightening with Allen wrench.
5. Repeat step 2B to 3B for other supply pipe.

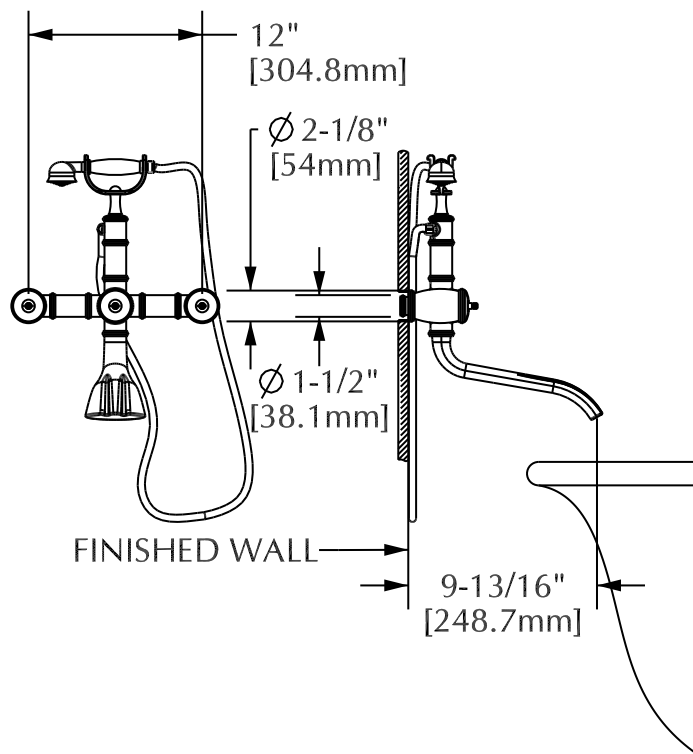
4B



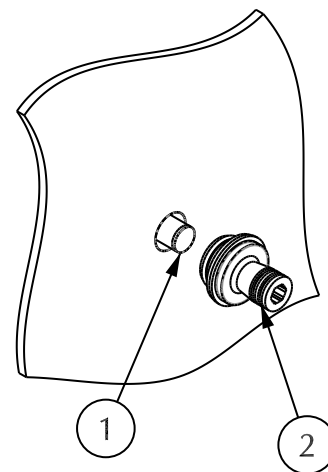
1. Mount supply transition rings (4) over quick connect fitting (2), making sure that larger opening is facing down and fits over tube (1).
2. Back out set screws (5) in both hot and cold valve bodies sufficiently so that they do not interfere with or damage O rings (3) on quick connect fittings (2).
3. Lubricate O rings (3) on quick connect fittings (2) and carefully mount exposed valve assembly (6) onto quick connect fittings (2) taking care not to damage O rings (3).
4. Apply some downward pressure to valve assembly (6) and tighten set screws (5) with Allen wrench (not supplied)

# Exposed Tub Wall Mount Set Installation

1C



2C

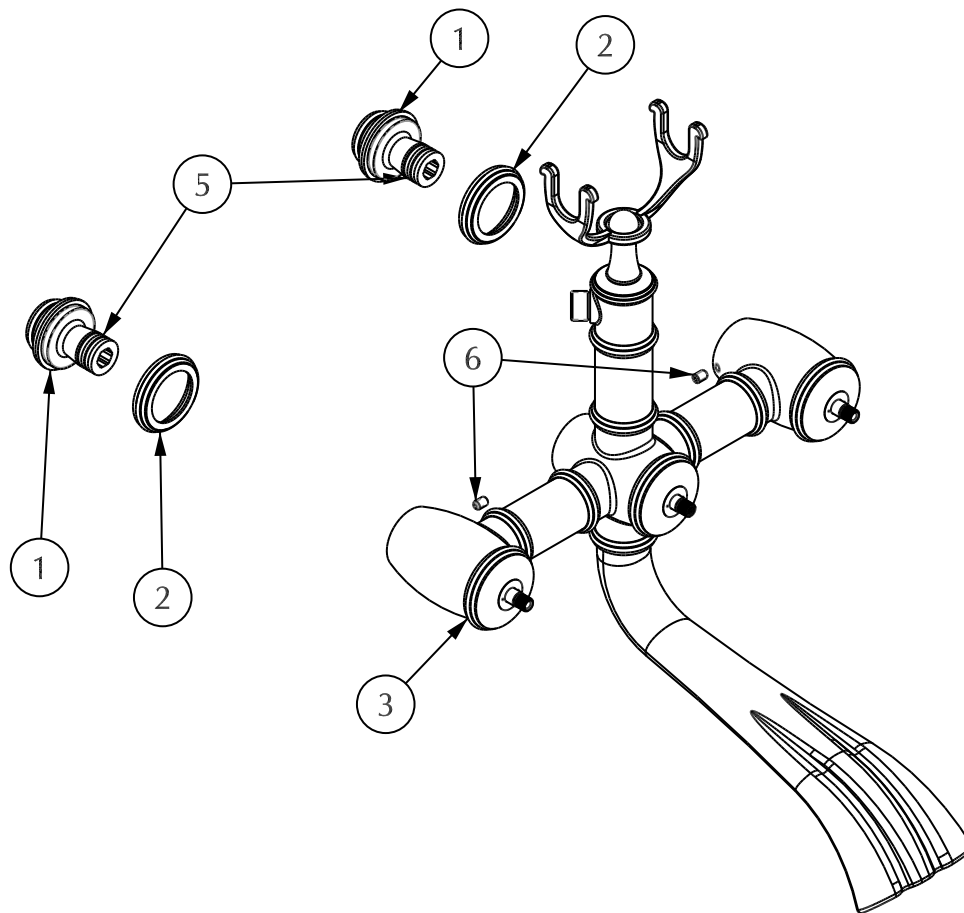


1. Determine location for installing tub & shower set.
2. Set 3/4" supply pipes (not included) 12" [304.8mm] on center between pipes. Pipes should terminate approximately 1/2" behind finished wall surface.

1. Apply thread sealer to 3/4" pipe (1) behind finished wall.
2. Mount quick connect fitting (2) onto pipe (1) and tight against the finished wall with Allen wrench.
3. Repeat Point 1 and 2 for other supply pipe.

# Exposed Tub Wall Mount Set Installation

3C

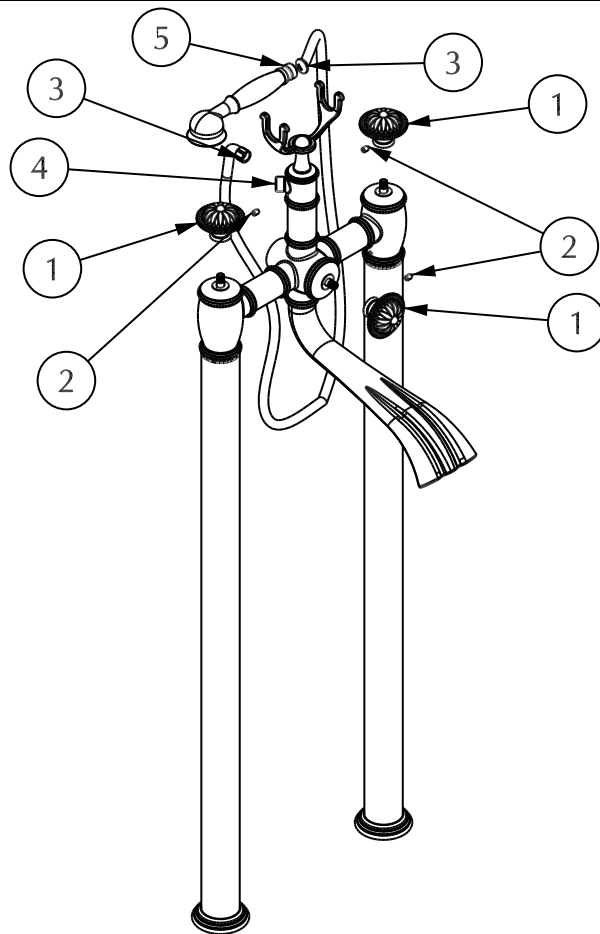


1. Mount supply transition rings (2) over quick connect fitting (1), making sure that larger opening is facing the wall.
2. Back out set screws (6) in both hot and cold valve bodies sufficiently so that they do not interfere with or damage O rings (5) on quick connect fittings (1).
3. Lubricate O rings (5) on quick connect fittings (1) and carefully mount exposed valve assembly (3) onto quick connect fittings (1) taking care not to damage O rings (5).
4. Apply some pressure to valve assembly (3) and tighten set screws (6) with Allen wrench (not supplied).



# Volume Control and Hand Shower Installation

6



1. Mount volume control knobs (1) (purchase separately) onto stem of hot valve, cold valve and diverter, securing with set screws (2).
2. Insert shower hose gasket into shower hose (3) and connect to hand held shower elbow (4).
3. Insert shower hose gasket into shower hose (3) and connect to hand held shower (5).
4. Turn hot and cold control knobs on, switch diverter knob, check for leaks.
5. Reinstall all connections if necessary.

# Exposed Tub Parts List

## Part List

Item	Part Number	Description
1	11001	2-56 Screw
2	10993*	Stem Extension
3	CART-3/4-RH	Cartridge - Hot
	CART-3/4-LH	Cartridge - Cold
4	10997	O ring
5	10998	Set Screw
6	10991	Lock Nut
7	11559*	Diverter Stem Extension
8	10990	Cartridge - Diverter
9	11530*	Hose
10	11531*	HS Wand

\* SPECIFY FINISH WHEN ORDERING  
\*\* CONTACT SHERLE WAGNER SALES REPRESENTATIVE

