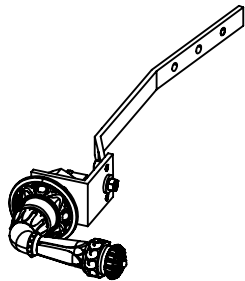


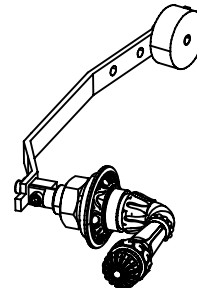


INSTALLATION GUIDE

TOILET TRIP LEVER

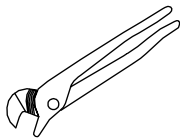


SIDE MOUNT LEVER

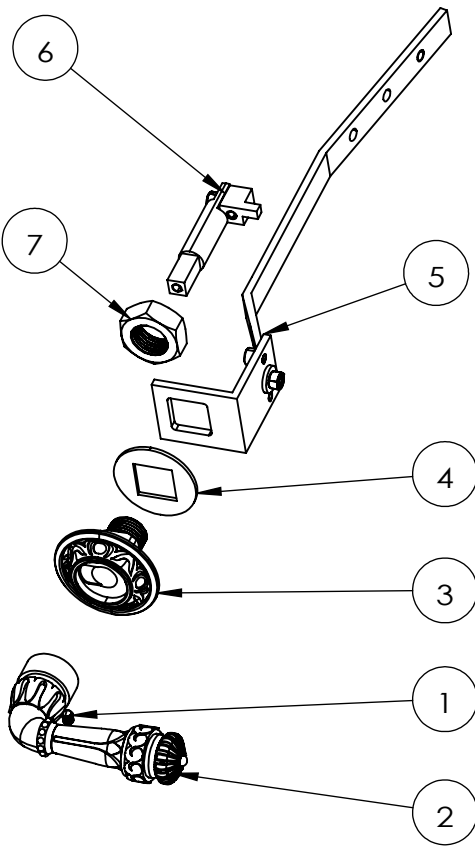
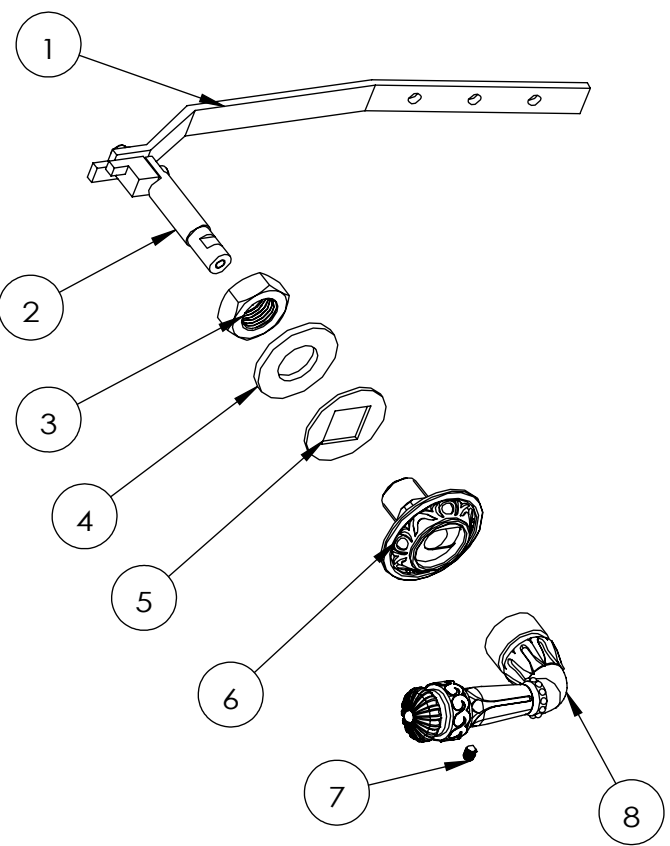


FRONT MOUNT LEVER

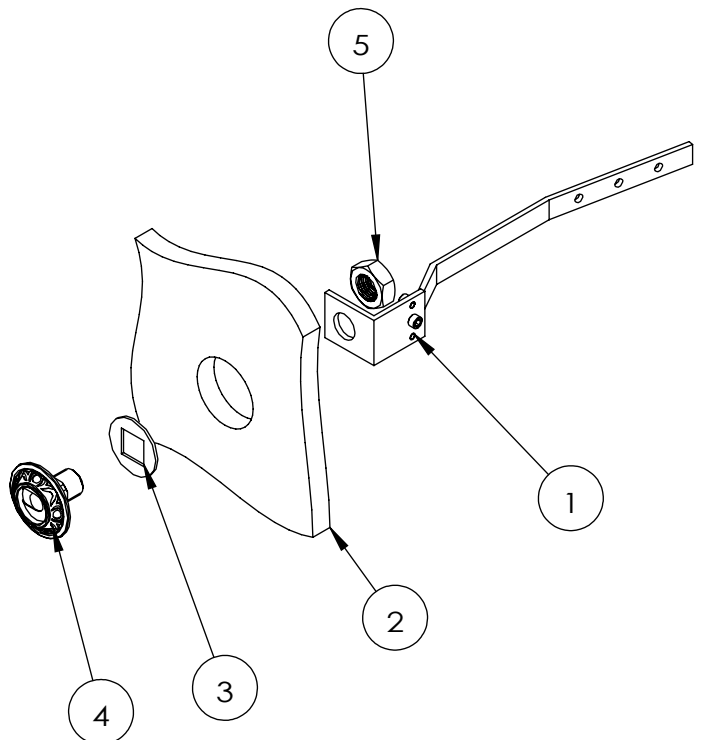
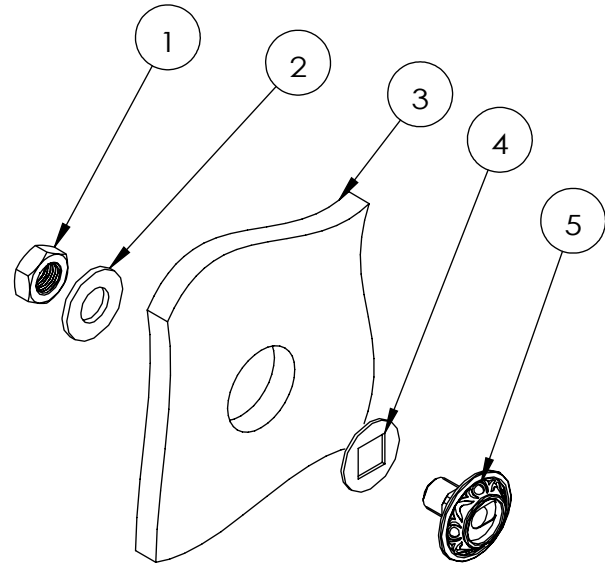
INSTALLATION TOOLS THAT MAY BE NEEDED:



TOILET TRIP LEVER INSTALLATION

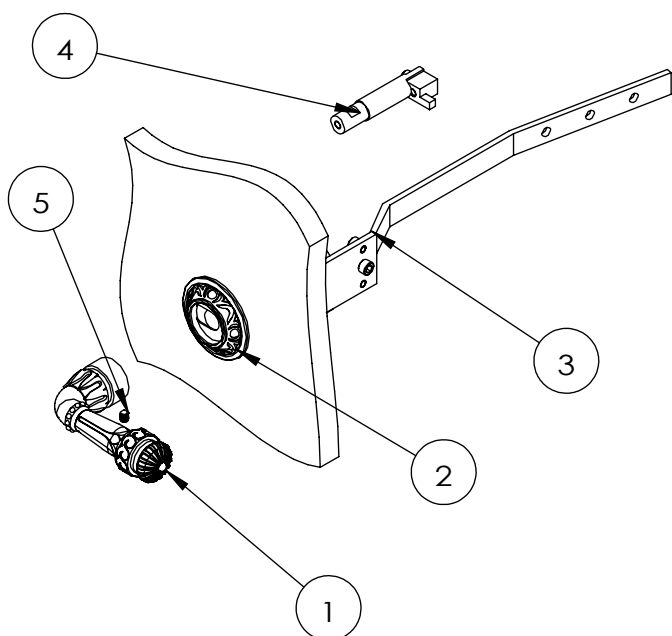
1 A	2 B
	
<p>SIDE MOUNT TRIP LEVER</p> <ol style="list-style-type: none"> 1. REMOVE SCREW (1) FROM LEVER (2). 2. REMOVE POST (6) AND LEVER (2) FROM HOUSING (3). 3. REMOVE NUT (7), ARM (5) AND WASHER (4) FROM HOUSING (3). 	<p>FRONT MOUNT TRIP LEVER</p> <ol style="list-style-type: none"> 1. REMOVE SCREW (7) FROM LEVER (8). 2. REMOVE POST (2) WITH ARM (1) FROM LEVER (8). 3. REMOVE NUT (3) WASHER (4) WASHES (5) FROM HOUSING (6).

TOILET TRIP LEVER INSTALLATION

2 A	2 B
	
<p>SIDE MOUNT TRIP LEVER</p> <p>1. MOUNT WASHER (3) ONTO HOUSING (4) AND INSERT HOUSING (4) THROUGH TANK WALL (2).</p> <p>2. SLIDE ARM (1) ONTO HOUSING (4) AND SECURE WITH NUT (5).</p>	<p>FRONT MOUNT TRIP LEVER</p> <p>1. MOUNT WASHER (4) ONTO HOUSING (5) AND INSERT HOUSING (5) THROUGH TANK WALL (2).</p> <p>2. MOUNT WASHER (2) ONTO HOUSING (5) AND SECURE WITH NUT (1).</p>

TOILET TRIP LEVER INSTALLATION

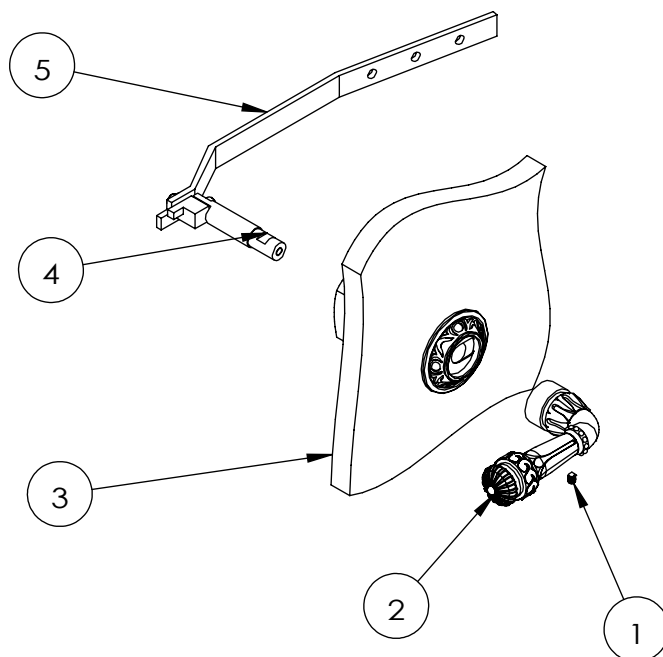
3 A



SIDE MOUNT TRIP LEVER

1. INSERT POST (4) THROUGH HOUSING (2) FROM INSIDE.
2. MOUNT LEVER (1) ONTO POST (4) FROM OUTSIDE AND SECURE LEVER (1) WITH SCREW (5).
3. CONNECT FLAPPER CHAIN (NOT SUPPLIED) INTO CHAIN HOLE ON TRIP ARM (3). RAISE TRIP ARM (3) TO A POINT WHERE IT IS HORIZONTAL TO FLOOR. ACTUATE TRIP MECHANISM AND CHECK THAT FLAPPER LIFTS OFF SEAT AND RESEATS PROPERLY. ADJUST CHAIN LENGTH AS NECESSARY.

3 B



FRONT MOUNT TRIP LEVER

1. INSERT POST (4) WITH ARM (5) THROUGH HOUSING (3) FROM INSIDE.
2. MOUNT LEVER (2) ONTO POST (4) FROM OUTSIDE AND SECURE LEVER (2) WITH SCREW (1).
3. CONNECT FLAPPER CHAIN (NOT SUPPLIED) INTO CHAIN HOLE ON TRIP ARM (5). RAISE TRIP ARM (5) TO A POINT WHERE IT IS HORIZONTAL TO FLOOR. ACTUATE TRIP MECHANISM AND CHECK THAT FLAPPER LIFTS OFF SEAT AND RESEATS PROPERLY. ADJUST CHAIN LENGTH AS NECESSARY.