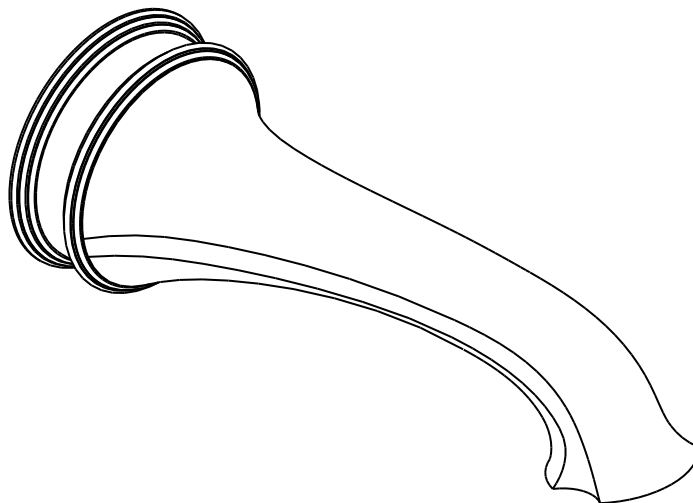


SHERLE WAGNER

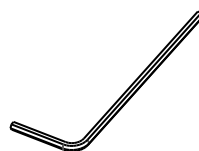
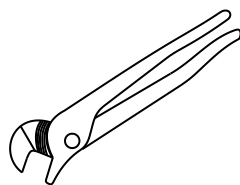


INSTALLATION GUIDE

WALLMOUNT TUB SPOUT

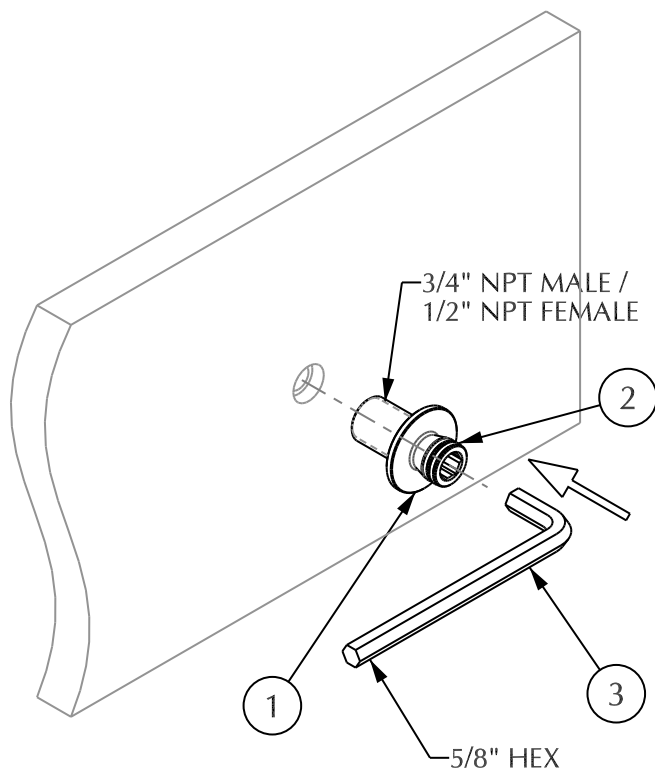


Installation tools that may be needed:



Quick Connect Spout Installation

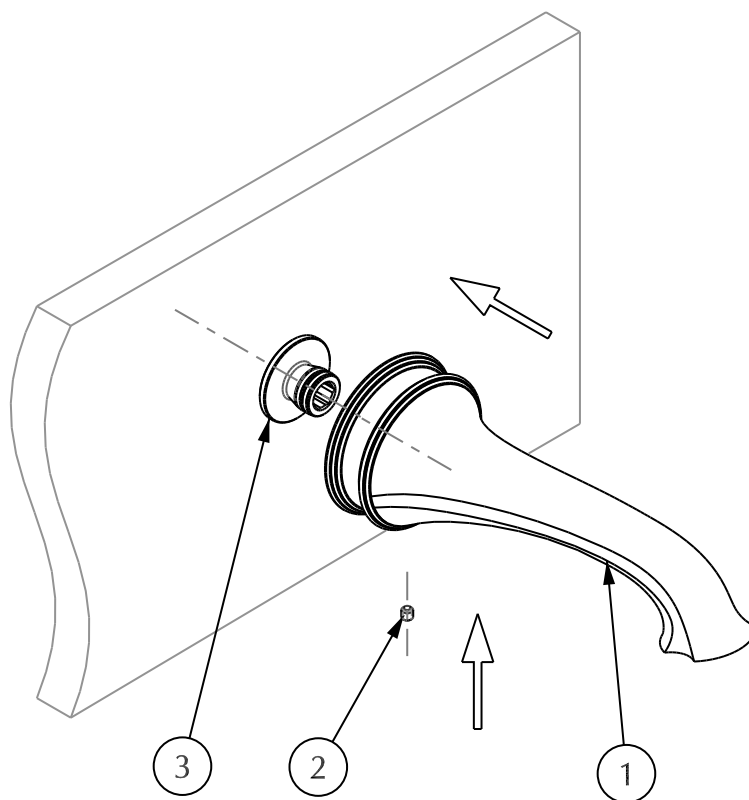
1A



1. Apply proper thread sealant to quick connect (1) threads, then install quick connect (1) to fitting inside wall using hex wrench (3) (not supplied).
2. Check that quick connector (1) is firmly on wall and o-ring (2) are properly seated in grooves.

NOTE: SEE PAGE 5 FOR QUICK CONNECT DIMENSIONS.

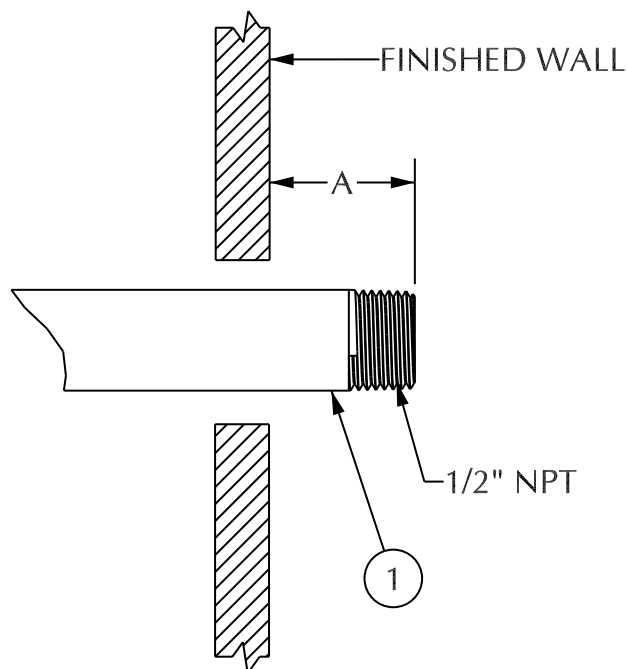
2A



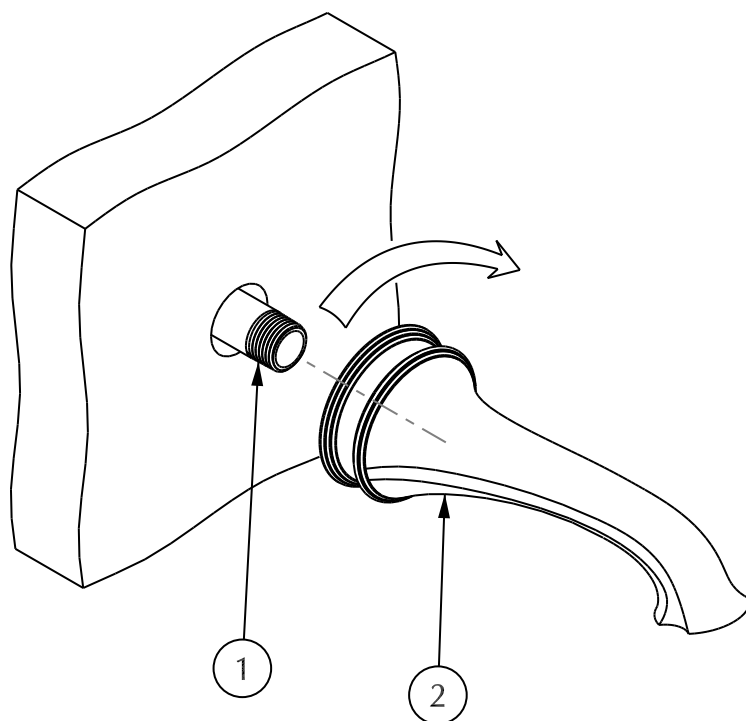
1. Slide tub spout (1) onto quick connect shank (3) until spout is flush against wall.
2. Tighten set screw (2) into bottom of spout.
3. Recheck that spout is firmly on wall.

Threaded Spout Installation

1B



2B



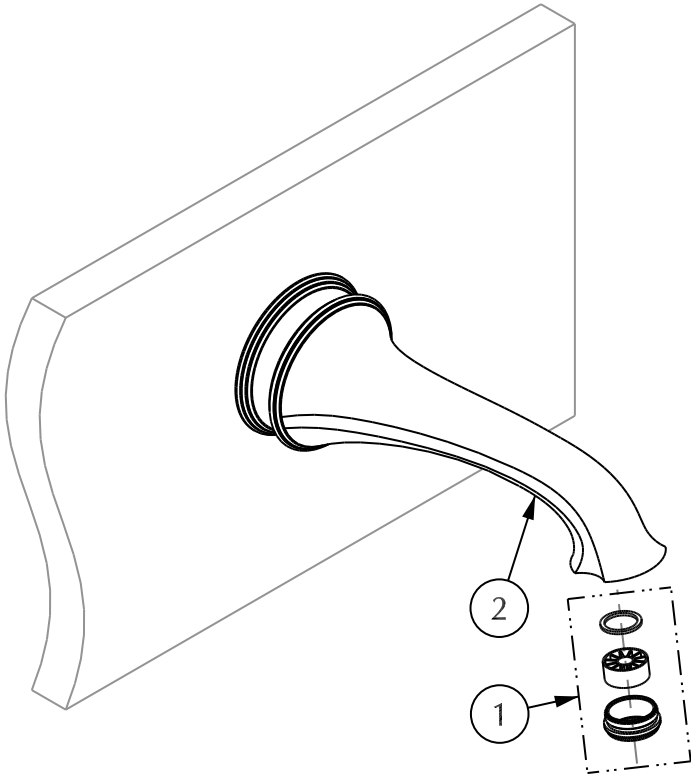
1. Rough-in 1/2" supply pipe (1) to a distance A away from finished wall surface as shown in below table.

NOTE: MAKE SURE THAT 1/2" PIPE (1) IS RIGIDLY HELD IN PLACE. BE SURE TO "DRY" FIT 1/2" SUPPLY PIPE TO SPOUT TO ENSURE DISTANCE A IS CORRECT.

Model No.	Description	A
0815TUB	Shell	1/2" [50.8mm]
0816TUB	Dolphin	2-1/2" [63.5mm]
0819TUB	Acanthus B	15/16" [23.8mm]
0821TUB	Louis Seize	9/16" [14.3mm]

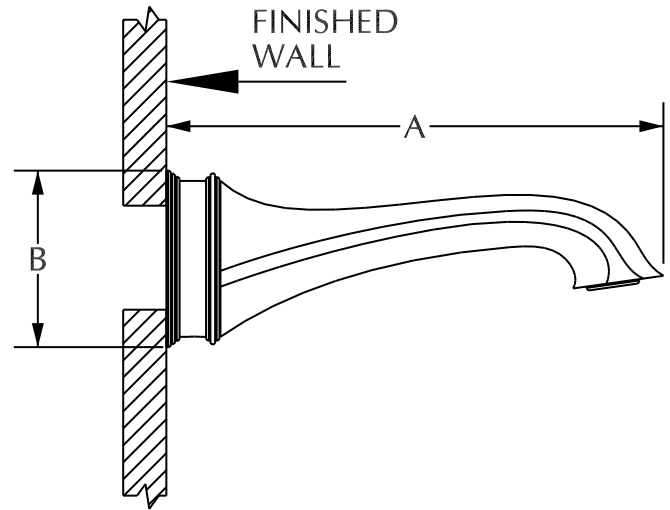
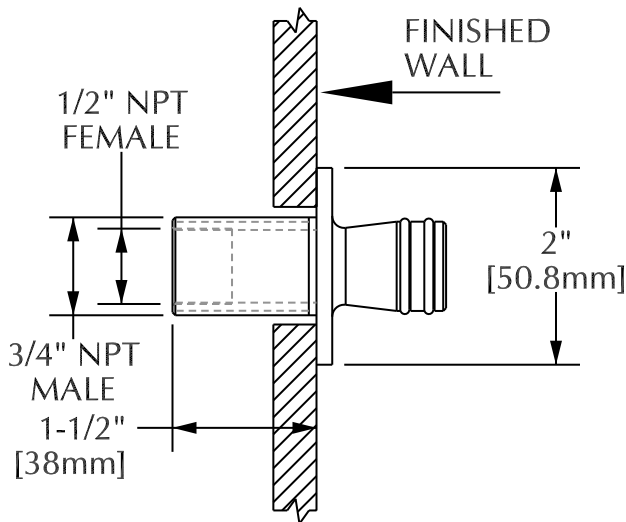
1. Apply an appropriate thread sealant to threaded end of 1/2" supply pipe (1).
2. Thread spout (2) onto 1/2" supply pipe (1) until spout is securely in place against finished wall surface.

3



1. Remove aerator assembly (1) from spout (2).
2. Turn on water to flush lines and to check for leaks.
3. Re-install aerator and turn on water to check for proper aerator installation.

Wallmount Tub Spout Dimensions



Model No.	Description	A	B
0801TUB	Apollo	7 1/2" [190,5mm]	2" [50.8mm]
0802TUB	Nouveau	7 3/4" [196.9mm]	2" [50.8mm]
0803TUB	Pyramid	8" [203.2mm]	2 5/8" [66.7mm]
0813TUB	Smooth Classic	6" [152.4mm]	2 3/4" [69.9mm]
0814TUB	Contemporary	7 1/2" [190,5mm]	3 1/4" [82.6mm]
0815TUB	Shell	6 1/2" [165.1mm]	2 7/8" [73mm]
0816TUB	Dolphin	5 3/4" [146.1mm]	2 3/4" [69.9mm]
0818TUB	Ribbon & Reed A	6 1/2" [165.1mm]	3 1/4" [82.6mm]
0819TUB	Acanthus B	6 1/2" [165.1mm]	3 1/2" [88.9mm]
0820TUB	Swan	7 1/2" [190.5mm]	3" [76.2mm]
0821TUB	Classic C Textured	6" [152.4mm]	2 3/4" [69.9mm]
0822TUB	Louis Seize	6" [152.4mm]	2 3/4" [69.9mm]
0823TUB	Filigree	9" [228.6mm]	3 5/8" [92.1mm]
0824TUB-S	Harrison Small	8-15/16" [227mm]	3 5/8" [92.1mm]
0824TUB-L	Harrison Large	9" [228.6mm]	3 5/8" [92.1mm]
0825TUB	Grey	10" [254mm]	3 11/16" [93.7mm]
0826TUB	Block	7" [177.8mm]	1-1/8" [28.6mm]

Wallmount Tub Spout Parts List

ITEM	PART NUMBER	DESCRIPTION
1	10802	Quick Connect Shank
2	10827	O-Ring
3	VARIOUS*	Aerator Assembly
4	11724	1/4-20 X 0.75 Set Screw

* CONTACT SHERLE WAGNER SALES REPRESENTATIVE

