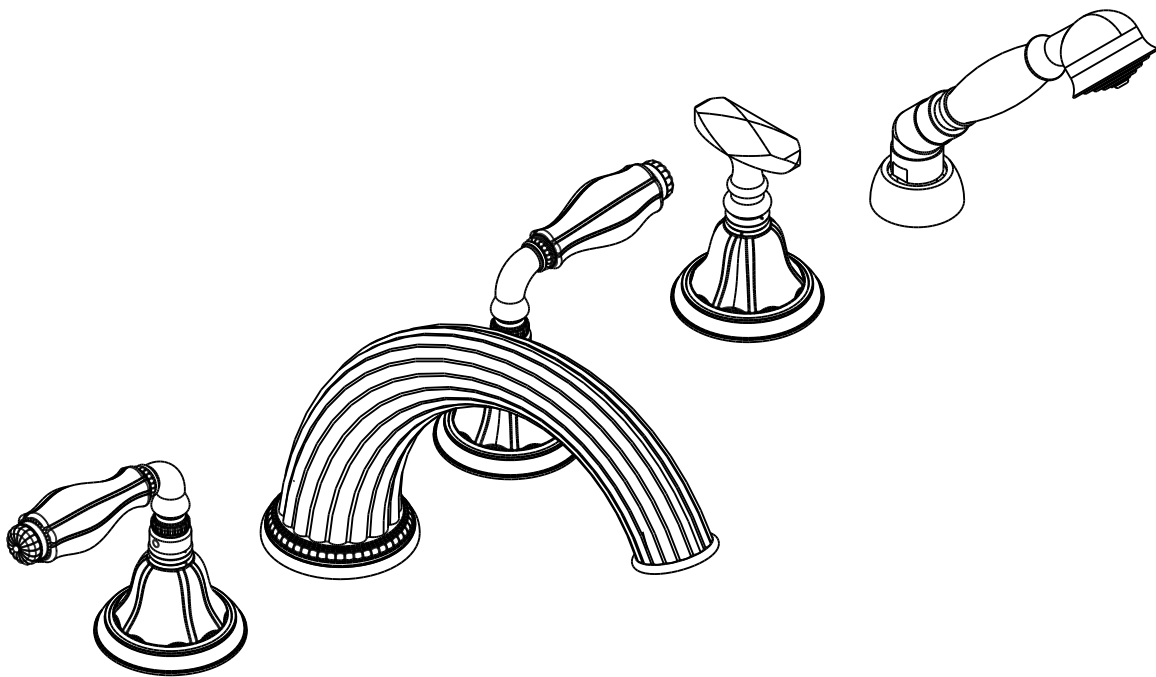


SHERLE WAGNER

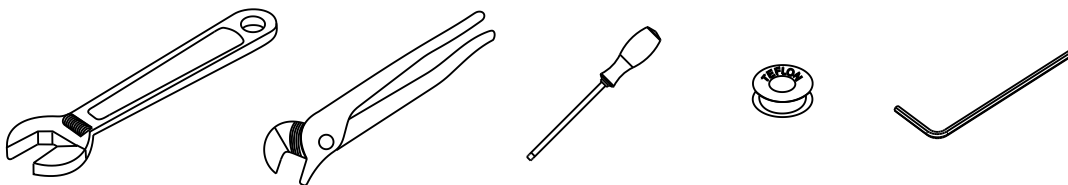


INSTALLATION GUIDE

DECKMOUNT TUB & SHOWER SET

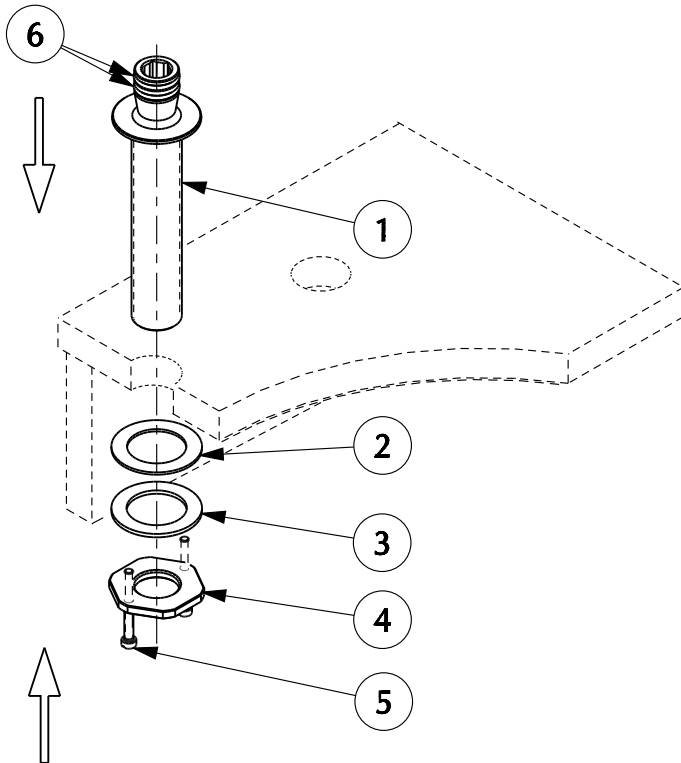


Installation tools that may be needed:



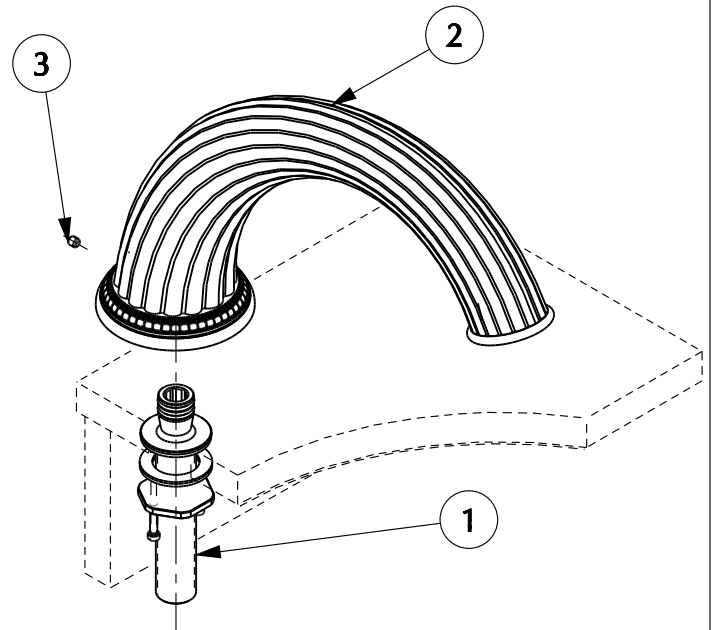
Spout Installation

1



1. Place quick connect fitting (1) through deck from above.
2. Slide rubber gasket (2) and metal washer (3) onto quick connect fitting (1).
3. Thread mounting nut (4) onto quick connect fitting (1) until nut is secured against bottom of deck.
4. Thread jack screws (5) into mounting nut and tighten screws evenly until secure.
5. Check o-rings (6) to make sure there is no damage or debris. Slight lubricate o-rings.

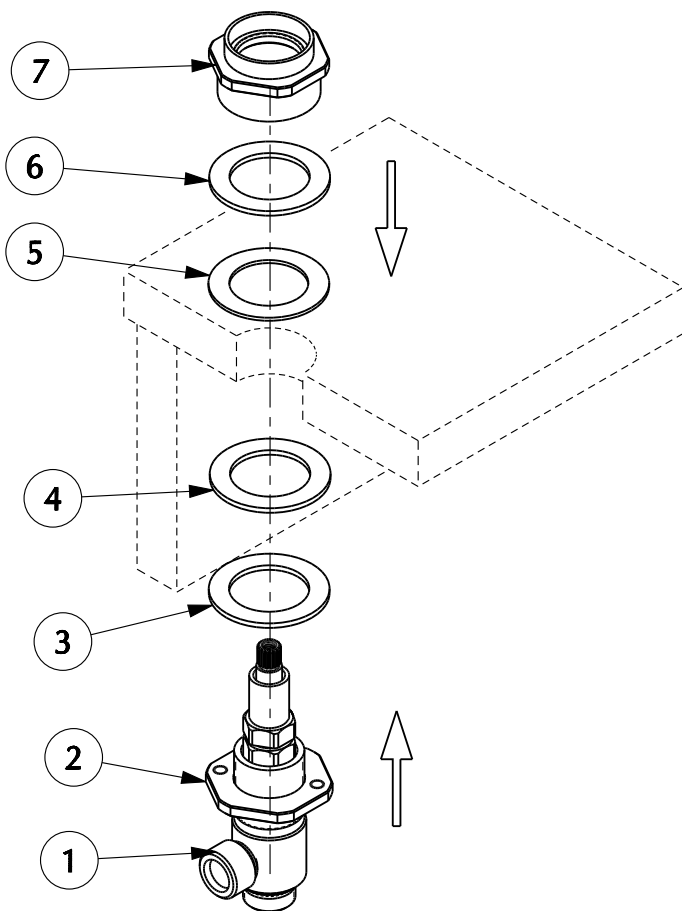
2



1. Mount spout assembly (2) onto quick connect fitting (1).
2. Secure spout assembly by tightening set screw (3).

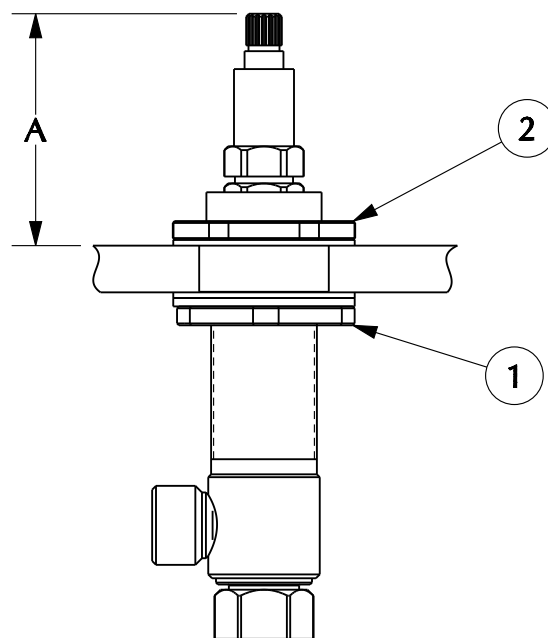
End Valve Installation

3



1. Thread bottom mounting nut (2) onto cold end valve (1 - marked with blue label). NOTE: KNOB STYLE MODELS WILL USE HOT END VALVES (RED LABELS) ON THE HOT AND COLD SIDES.
2. Slide metal washer (3) and rubber gasket (4) onto end valve (1), then place end valve (1) up through deck from below.
3. From above the deck, slide rubber gasket (5) and metal washer (6) over end valve (1), then thread valve top mounting nut (7) onto end valve (1). Make sure rubber gasket (5) is properly seated.

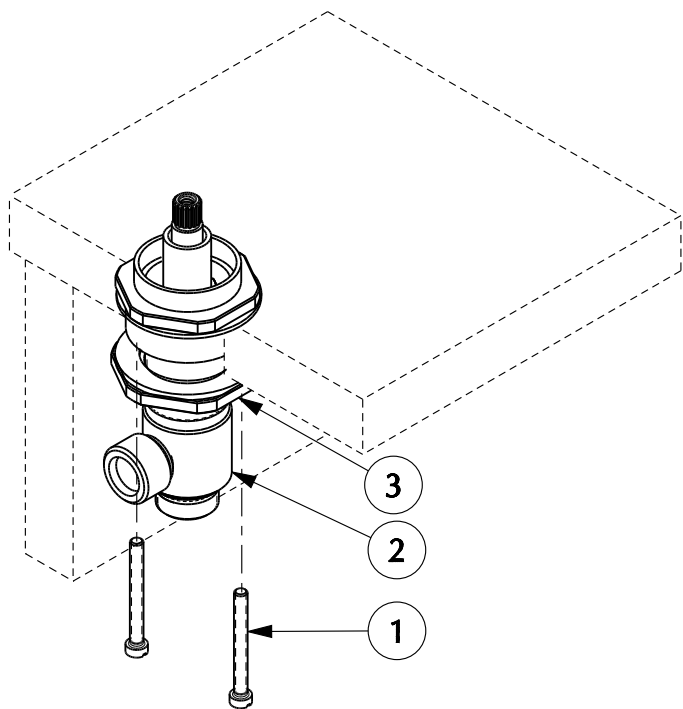
4



1. Referencing the chart on page 11, adjust the bottom mounting nut (1) and top mounting nut (2) as needed to achieve height "A" per the model being installed.

End Valve Installation

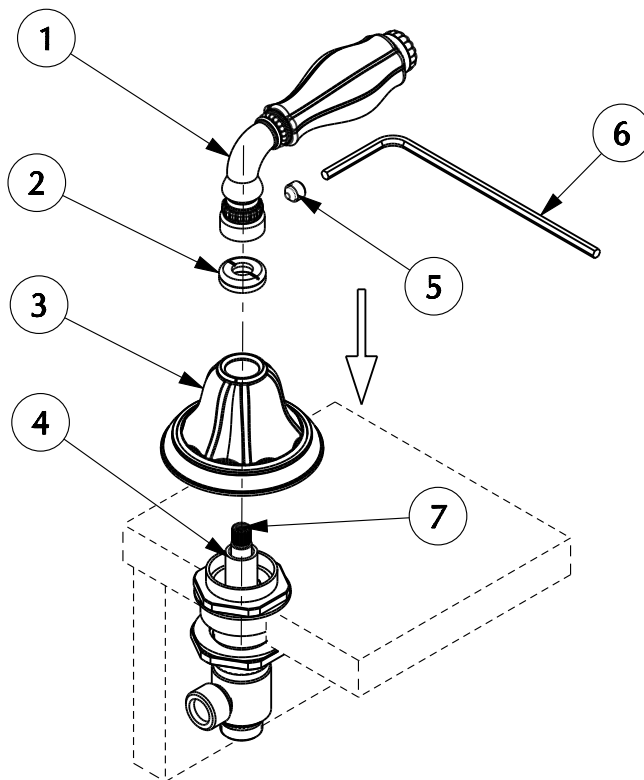
5



1. Thread jack screws (1) into bottom mounting nut (3) and tighten jack screws evenly until end valve (2) is secured. Adjust bottom mounting nut (3) as needed to allow for clearance for mounting the jack screws.
2. Turn cartridge stem counter-clockwise (clockwise for hot side) until stem stops.

Handle Installation

6

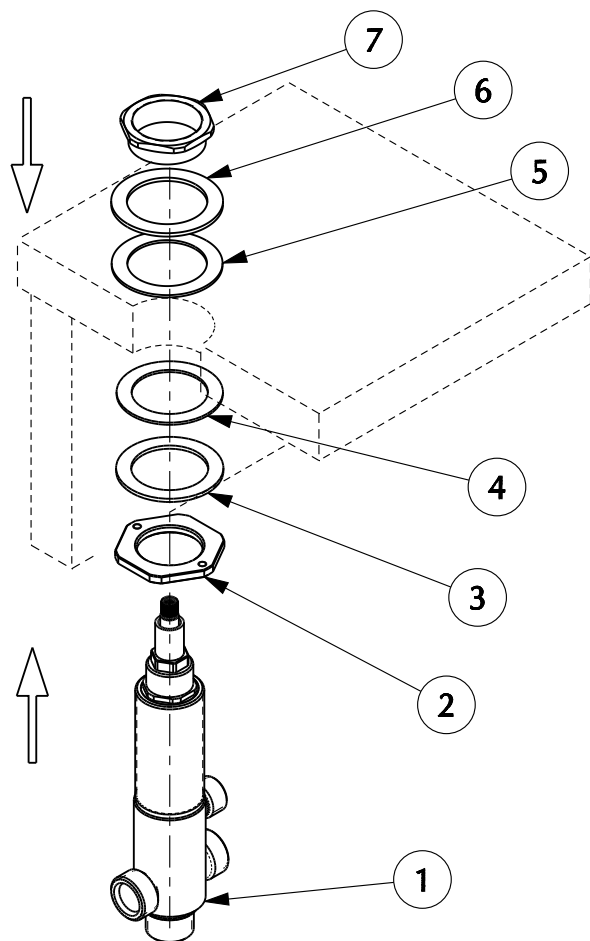


1. Place escutcheon (3) over valve.
2. Thread escutcheon nut (2) onto allthread (4) until secure and escutcheon (3) does not move.

NOTE: Some models utilize an escutcheon nut (2) that threads directly into the top of end valve, not the allthread (4). For these models, there will be no allthread (4).
3. Mount lever/knob (1) onto cartridge stem (7) and secure by tightening set screw (5) with hex wrench (6).
4. Turn lever to full off position and check to make sure it is straight. If it requires adjustment, remove set screw (5) and re-install lever/knob (1) to proper position, then re-install set screw (5).

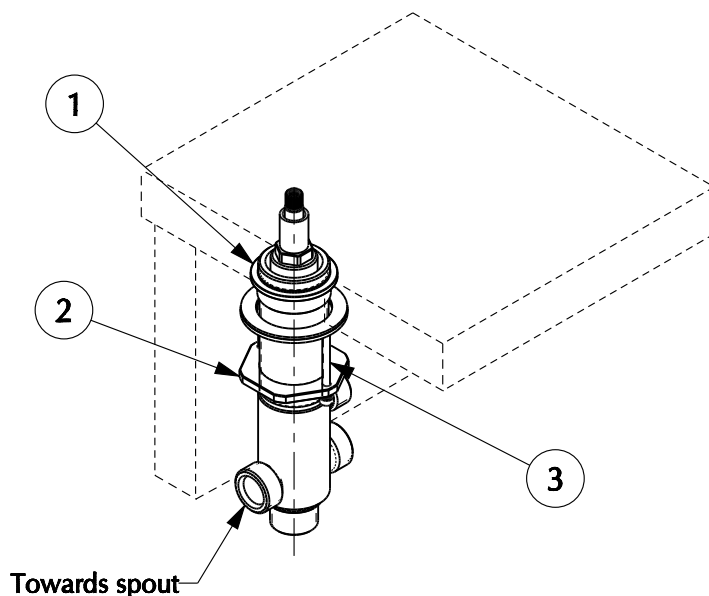
Diverter Valve Installation

7



1. Thread mounting nut (2) onto diverter valve (1) .
2. Slide metal washer (3) and rubber gasket (4) onto diverter valve (1), then place diverter valve (1) up through deck from below.
3. From above the deck, slide rubber gasket (5) and metal washer (6) over diverter valve (1), then thread valve top mounting nut (7) onto diverter valve (1). Make sure rubber gasket (5) is properly seated.

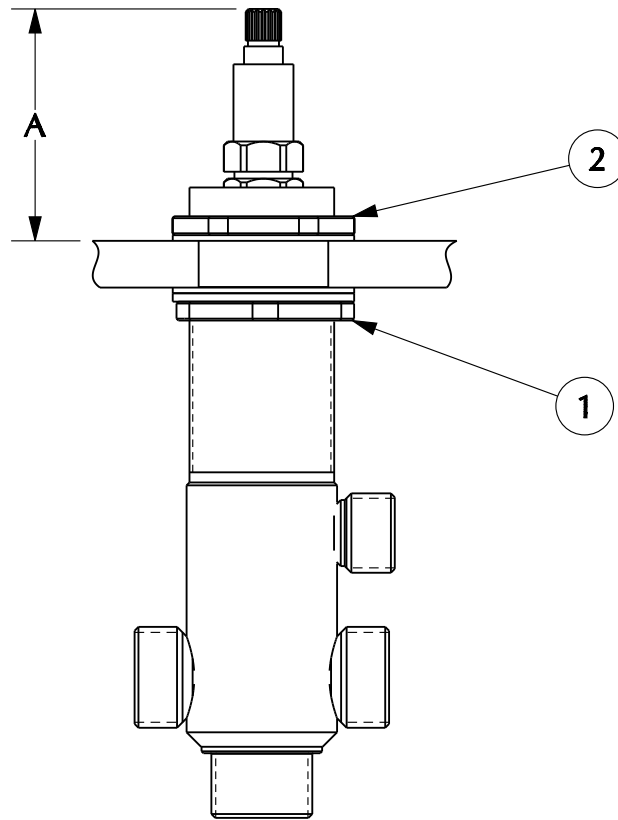
8



1. Position diverter end valve (1) with side outlet pointing towards spout, then thread mounting nut (2) up diverter valve (1) until mounting nut bottoms out on deck surface.
2. Thread jack screws (3) into mounting nut (2) and tighten jacks screws evenly with a screw driver until end valve is secured. Adjust mounting nut as needed to allow for clearance for the mounting jack screws.
3. Turn cartridge stem counterclockwise until stem stops. Diverter is now in the spout outlet position.

Diverter Valve Installation

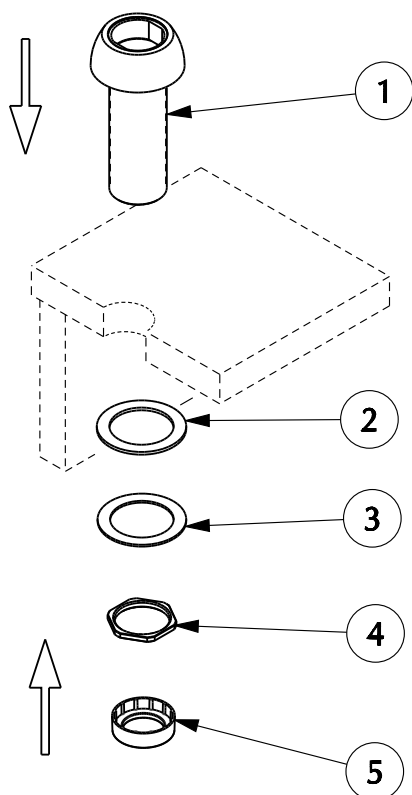
9



1. Referencing the chart on page 11, adjust the bottom mounting nut (1) and top mounting nut (2) as needed to achieve height "A" per the model being installed.

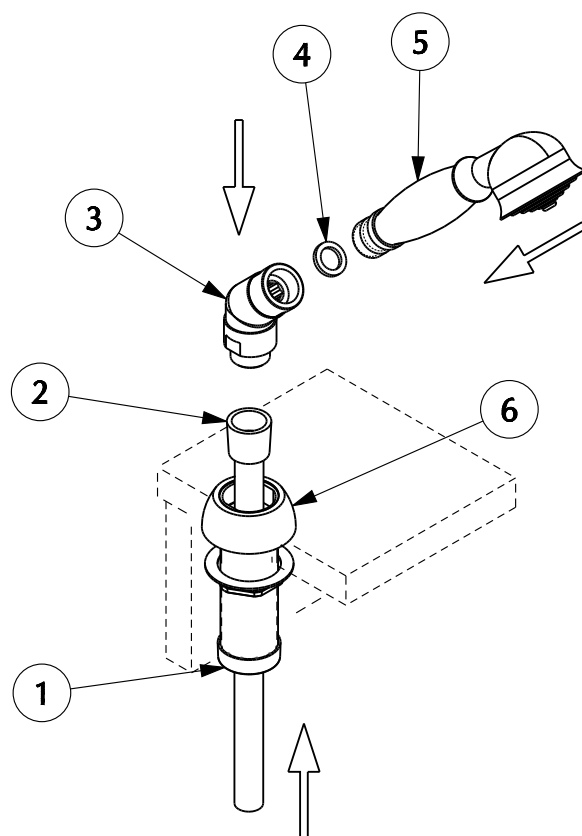
Hand Shower Installation

10



1. Insert shank (1) through the deck from top.
2. Slide rubber gasket (2) and metal gasket (3) onto shank (1).
3. Thread mounting nut (4) onto shank (1) until tight.
4. Press plastic guard (5) onto end of shank (1).

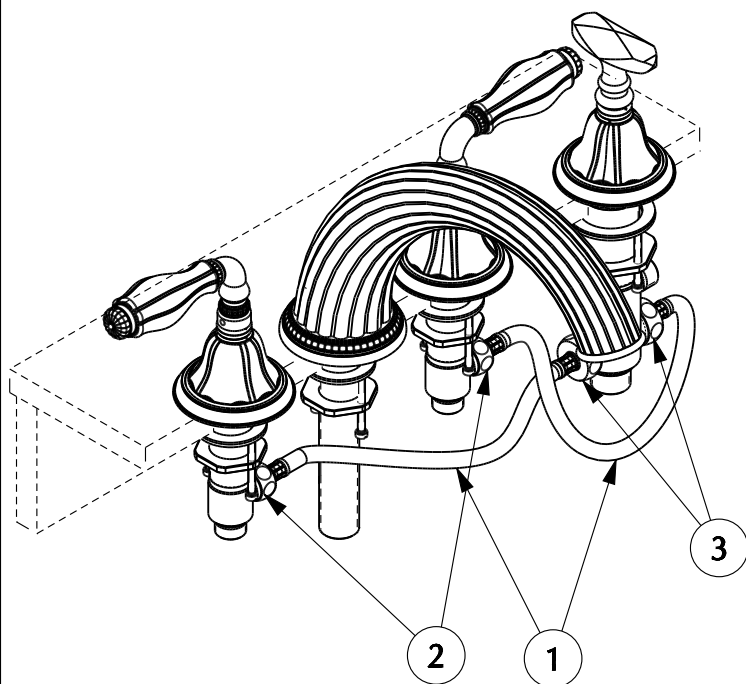
11



1. Insert wand hose (2) from bottom of shank (1) and through the deck.
2. Thread hose (2) onto elbow assembly (3).
3. **MAKE SURE GASKET (4) IS PROPERLY SEATED IN ELBOW ASSEMBLY (3).** Thread wand assembly (5) to elbow assembly (3).
4. Place elbow assembly (3) in seat of base (6)

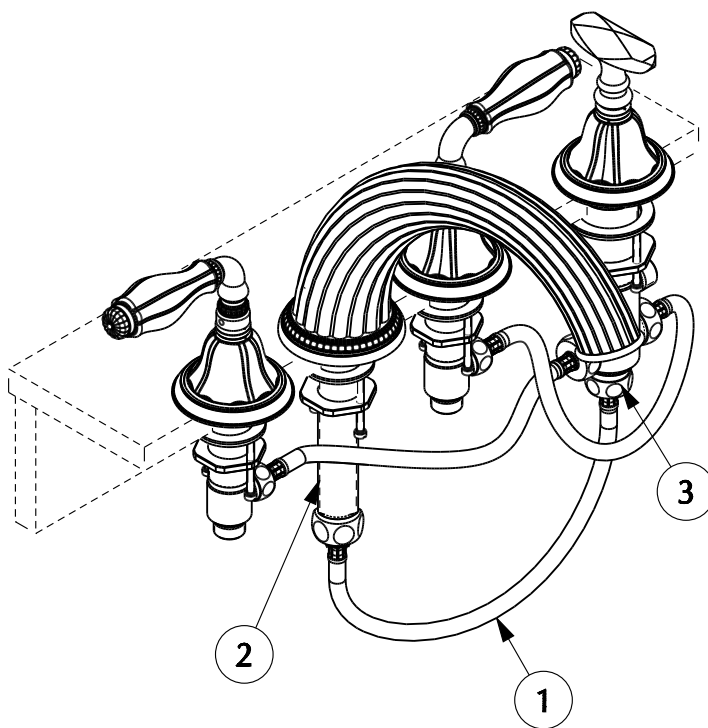
Water Supply Connection

12



1. Connect 1/2"F × 3/4"F braided hoses (1) to 1/2" end valve outlet (2) and to 3/4" diverter valve inlet (3) for hot and cold valve.

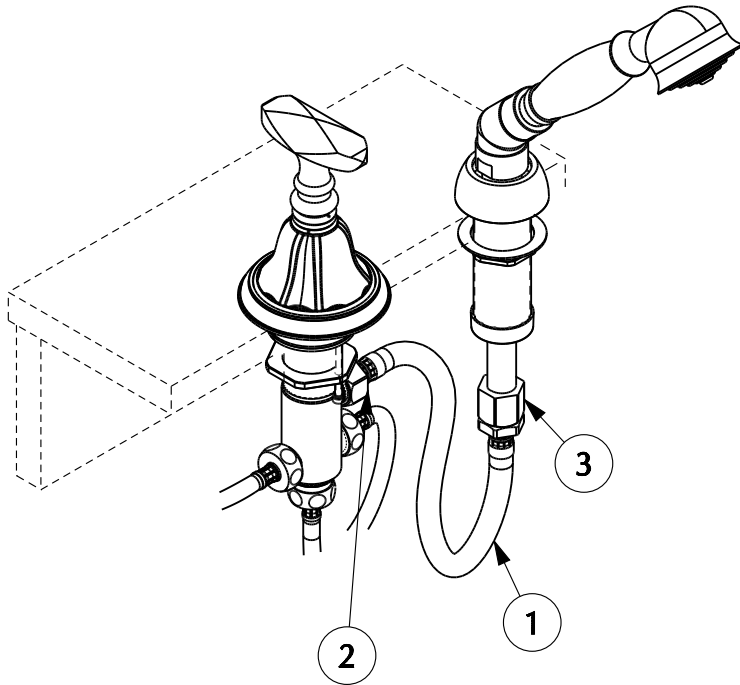
13



1. Connect 3/4"F × 3/4"F hoses (1 not supplied) to 3/4" diverter valve spout outlet (3) and spout inlet (2)

Water Supply Connection

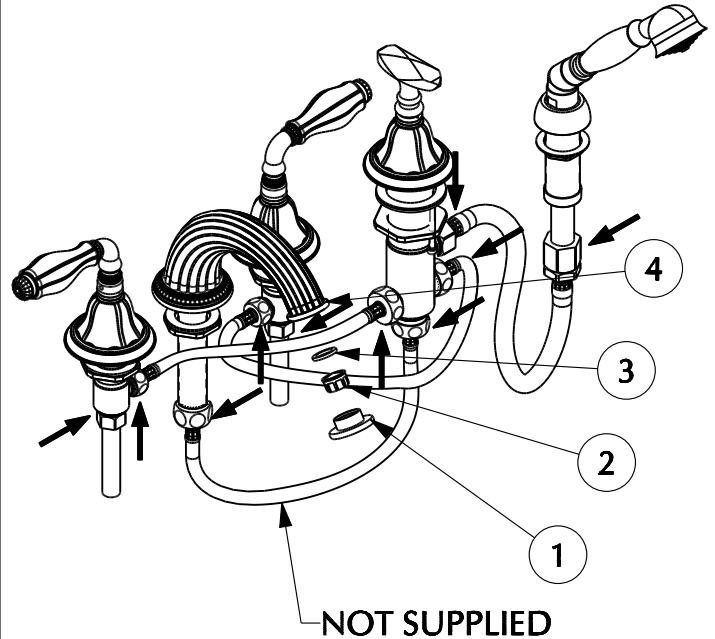
14



1. Connect 1/2" M × 1/2" F leader hose (1) to 1/2" diverter valve outlet (2) and to spiral hand shower hose (3).

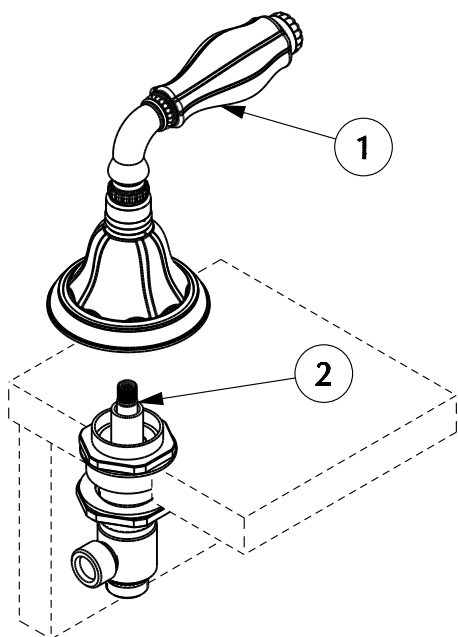
Flushing System

15



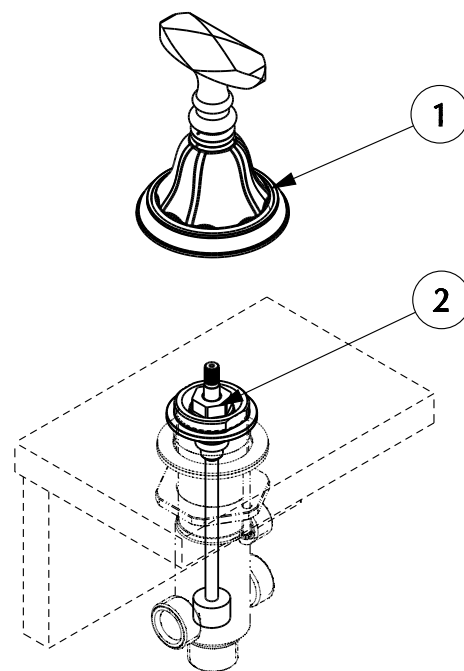
1. Make inlet connections to water supply lines (not included).
2. Remove aerator housing (1), aerator insert (2) and gasket (3) from spout tip (4).
3. Turn hot and cold handles to full open position and flush lines. Check all connections at arrows for leaks. Retighten connections if necessary.
4. Turn diverter handle clockwise to divert water to hand shower. (Check all connections at arrows for leaks.) Retighten connections if necessary.
5. Reinstall gasket (3), aerator insert (2) and housing (1).

Cartridge Replacement



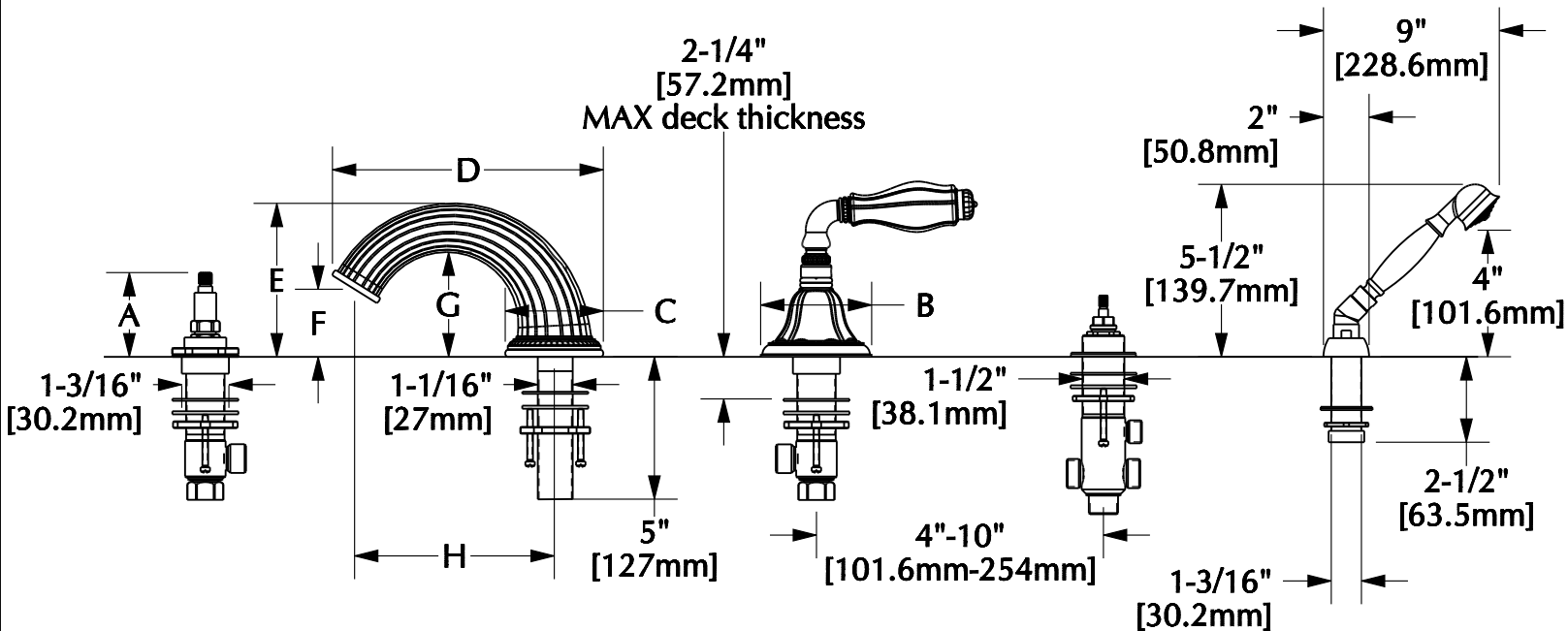
1. Remove handle assembly (1).
2. Using 3/4" socket (not supplied), unthread cartridge (2) from body.
3. Using 3/4" socket, install new cartridge into valve body.

Diverter Replacement



1. Remove diverter knob assembly (1).
2. Using 3/4" socket (not supplied), unthread cartridge (2) from body.
3. Using 3/4" socket, install new cartridge into valve body.

Deckmount Tub & Shower Set Dimensions



Handle Dimensions

Model No.	A	B	Model No.	A	B
0907	2" [50.8mm]	2-1/2" [63.5mm]	1029*	2-3/4" [69.9mm]	3-1/4" [82.6mm]
0910	2-3/8" [60.3mm]	2-3/4" [69.9mm]	1029**	2-3/8" [60.3mm]	3-1/4" [82.6mm]
0912	2-5/8" [66.7mm]	2-7/8" [73mm]	1029***	2-3/8" [60.3mm]	3-1/4" [82.6mm]
0913	2-3/8" [60.3mm]	2-7/8" [73mm]	1030*	2-3/4" [69.9mm]	3-1/4" [82.6mm]
0914	2-1/4" [57.2mm]	3-1/4" [82.6mm]	1030**	2-3/8" [60.3mm]	3-1/4" [82.6mm]
0915	2-5/8" [66.7mm]	2-3/4" [69.9mm]	1030***	2-3/8" [60.3mm]	3-1/4" [82.6mm]
0916	1-3/4" [44.5mm]	2-1/4" [57.2mm]	1040	2-3/8" [60.3mm]	3-1/4" [82.6mm]
0917	2-5/8" [66.7mm]	2-3/4" [69.9mm]	1065**	2-3/8" [60.3mm]	3-1/4" [82.6mm]
0918	2-3/8" [66.7mm]	2-3/4" [69.9mm]	1065***	2-3/8" [60.3mm]	3-1/4" [82.6mm]
0919	2-5/8" [66.7mm]	2-3/4" [69.9mm]	1097*	2-3/4" [69.9mm]	3-1/4" [82.6mm]
0920	2-5/8" [66.7mm]	2-3/4" [69.9mm]	1098	2-3/8" [60.3mm]	3-1/4" [82.6mm]
0921	2-5/8" [66.7mm]	2-3/4" [69.9mm]	2010	2" [50.8mm]	2" [50.8mm]
0923	2-3/8" [60.3mm]	2-7/8" [73mm]	2015	2" [50.8mm]	2" [50.8mm]
0931	2-3/8" [60.3mm]	2-3/4" [69.9mm]	2020	2" [50.8mm]	2" [50.8mm]
0932	2-3/8" [60.3mm]	2-3/4" [69.9mm]	2050	2-1/2" [63.5mm]	2-5/8" [66.7mm]
0933	2-1/4" [57.2mm]	2-3/4" [69.9mm]	2103	2" [50.8mm]	2" [50.8mm]
0934	2-3/8" [60.3mm]	2-5/8" [66.7mm]	2104	2" [50.8mm]	2" [50.8mm]
0980	2-3/8" [60.3mm]	2-7/8" [73mm]	2106	2" [50.8mm]	2" [50.8mm]
0981	2-3/8" [60.3mm]	2-7/8" [73mm]	2108	2" [50.8mm]	2" [50.8mm]
0990	2-3/4" [69.9mm]	2-7/8" [73mm]	2112	2" [50.8mm]	2" [50.8mm]
0991	2-3/4" [69.9mm]	2-7/8" [73mm]	2120	2" [50.8mm]	2" [50.8mm]
0992	2-3/4" [69.9mm]	2-7/8" [73mm]	2150	2-1/2" [63.5mm]	2-5/8" [66.7mm]
0993	2-3/4" [69.9mm]	2-7/8" [73mm]			

* INCLUDES ALL PORCELAIN TRIM
 ** INCLUDES ALL ONYX, ROSE QUARTZ, ROCK CRYSTAL AND AMETHYST
 *** INCLUDES MALACHITE, TIGER EYE, LAPIS LAZULI AND RHODOCHROSITE

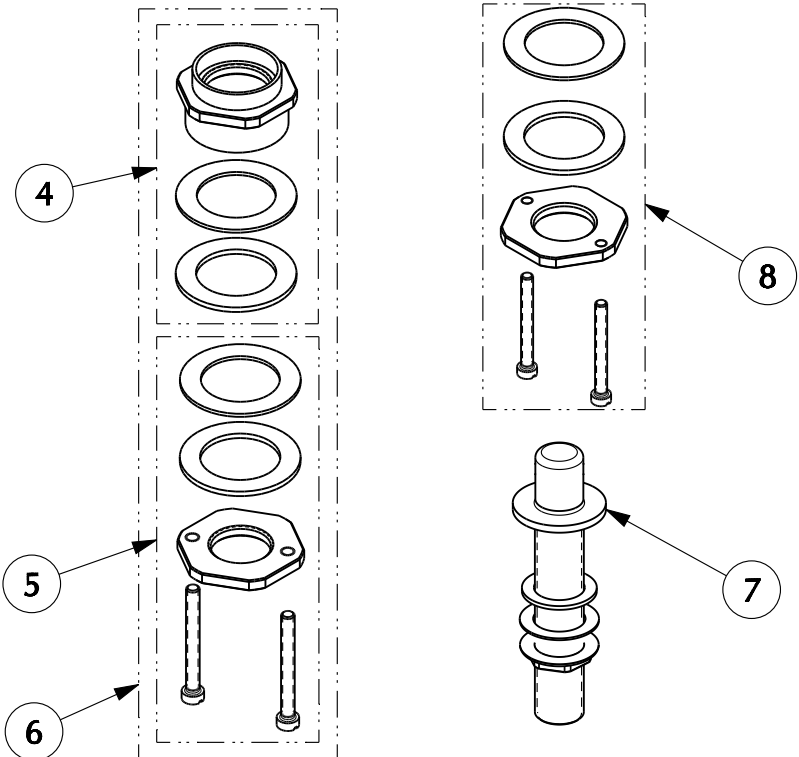
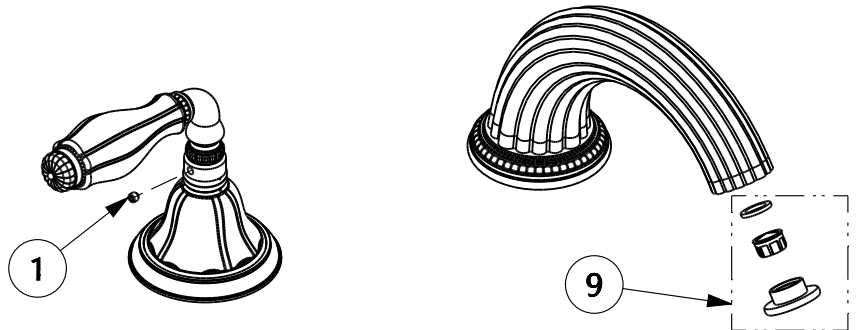
Spout Dimensions

Item:	Description	C	D	E*	F	G	H*
0801DKT	Apollo	1-3/4" [44.5mm]	10" [254mm]	4" [101.6mm]	1-1/2" [38.1mm]	2" [50.8mm]	8-1/2" [215.9mm]
0802DKT	Nouveau	1-3/4" [44.5mm]	9-3/4" [247.7mm]	5" [127mm]	1-3/4" [44.5mm]	2" [50.8mm]	7-1/2" [109.5mm]
0803DKT	Pyramid	2-5/8" [66.7mm]	10-3/8" [263.5mm]	5" [127mm]	1-1/4" [31.8mm]	1-1/4" [31.8mm]	9" [228.6mm]
0813DKT	Smooth Classic	3-1/4" [82.6mm]	12" [304.8mm]	7-1/4" [184.2mm]	4" [101.6mm]	5-1/2" [139.7mm]	10" [254mm]
0814DKT	Contemporary	3-1/4" [82.6mm]	11-5/8" [295.3mm]	8" [203.2mm]	3-3/4" [95.3mm]	6-5/8" [168.3mm]	7-3/4" [196.9mm]
0818DKT	Ribbon & Reed	4-1/4" [108mm]	9-3/4" [247.7mm]	3-1/2" [88.9mm]	1-3/4" [44.5mm]	2-1/4" [57.2mm]	7-1/2" [109.5mm]
0819DKT	Acanthus	4" [101.6mm]	12" [304.8mm]	5-1/4" [133.4mm]	3-1/4" [82.6mm]	4" [101.6mm]	9" [228.6mm]
0820DKT	Swan	2-3/4" [69.9mm]	10" [254mm]	13-3/4" [349.3mm]	6-1/4" [158.8mm]	10-1/2" [266.7mm]	7" [177.8mm]
0821DKT	Classic Textured	3-1/4" [82.6mm]	12" [304.8mm]	7-1/4" [184.2mm]	4" [101.6mm]	5-1/2" [139.7mm]	10" [254mm]
0822DKT	Louis Seize	3-1/4" [82.6mm]	12" [304.8mm]	7-1/4" [184.2mm]	4" [101.6mm]	5-1/2" [139.7mm]	10" [254mm]
0823DKT	Filigree	4" [101.6mm]	10-5/8" [269.9mm]	5-7/8" [149.2mm]	3-9/16" [90.5mm]	4-1/4" [108mm]	8-1/2" [215.9mm]
0824DKT-S	Harrison Small	4" [101.6mm]	10-5/8" [269.9mm]	5-7/8" [149.2mm]	3-9/16" [90.5mm]	4-1/4" [108mm]	8-1/2" [215.9mm]
0824DKT-L	Harrison Large	4" [101.6mm]	12" [304.8mm]	5-7/8" [149.2mm]	3-9/16" [90.5mm]	4-1/4" [108mm]	9-5/8" [244.5mm]
0825DKT	Grey	3-11/16" [93.7mm]	12" [304.8mm]	3-1/4" [82.6mm]	2" [50.8mm]	2-3/4" [69.9mm]	10" [254mm]

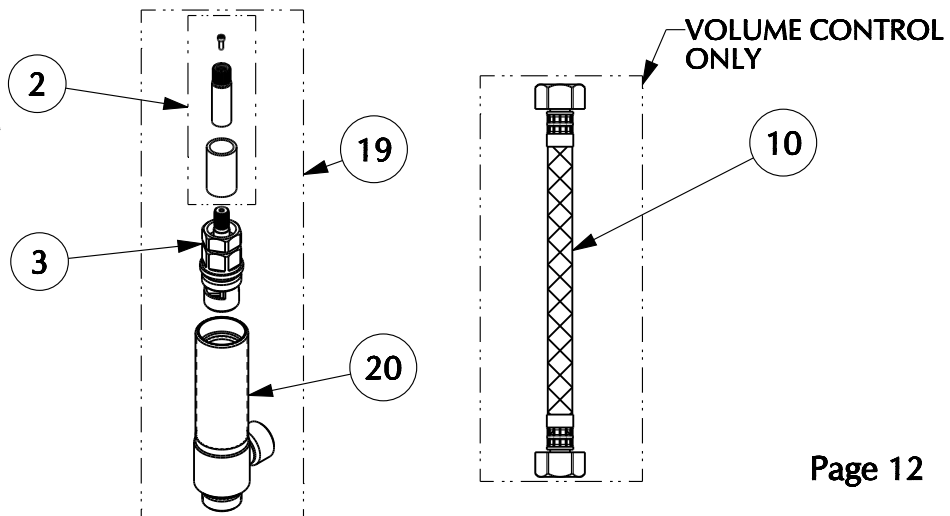
E - INDICATES HIGHEST POINT
 H - CENTER OF INLET TO CENTER OF OUTLET

Deckmount Tub & Shower Parts List

Item	Part Number	Description
1	14272	Set Screw Kit
2	EXT-KIT-DKMT*	Deckmount Extension Kit
3	CART-1/2-RH	Cartridge - Hot
	CART-1/2-LH	Cartridge - Cold
4	15254	Top Mounting Kit
5	10583	End Valve Mounting Kit
6	13128	Complete End Valve Mounting Kit
7	10758	Quick Connect
8	11745	Spout Mounting Kit
9	VARIOUS**	Aerator Kit
10	11664	Supply Hose </td
11	26413	Diverter Top Nut
12	10610	Diverter Bottom Mounting Kit
13	RPKT-DIV2/2-DKMT	Diverter Cartridge
14	11662	Leader Hose
15	11741*	HS Wand Hose
16	11678*	HS Wand Shank Assembly
17	11677*	HS Elbow
18	11531*	HS Wand Assembly
19	VLVE-DKT-1/2-RH	HOT VALVE
	VLVE-DKT-1/2-LH	COLD VALVE
20	13053	VALVE BODY
21	10143	DIVERTER VALVE BODY
22	13119	DIVERTER VALVE



* SPECIFY FINISH WHEN ORDERING
 ** CONTACT SHERLE WAGNER SALES REPRESENTATIVE



Deckmount Tub & Shower Set Parts List

Item	Part Number	Description
1	14272	Set Screw Kit
2	EXT-KIT-DKMT*	Deckmount Extension Kit
3	CART-1/2-RH	Cartridge - Hot
	CART-1/2-LH	Cartridge - Cold
4	15254	Top Mounting Kit
5	10583	End Valve Mounting Kit
6	13128	Complete End Valve Mounting Kit
7	11745	Spout Mounting Kit
8	11716	Quick Connector
9	10827	O-Ring
10	VARIOUS**	Aerator Kit
11	11664	Supply Hose
12	26413	Diverter Top Nut
13	10610	Diverter Bottom Mounting Kit
14	RPKT-DIV2/2-DKMT	Diverter Cartridge
15	11662	Leader Hose
16	11741*	HS Wand Hose
17	11678*	HS Wand Shank Assembly
18	11677*	HS Elbow
19	11531*	HS Wand Assembly
20	VLVE-DKT-1/2-RH	HOT VALVE
	VLVE-DKT-1/2-LH	COLD VALVE
21	13053	VALVE BODY
22	10143	DIVERTER VALVE BODY
23	13119	DIVERTER VALVE

* SPECIFY FINISH WHEN ORDERING
 ** CONTACT SHERLE WAGNER SALES REPRESENTATIVE

