

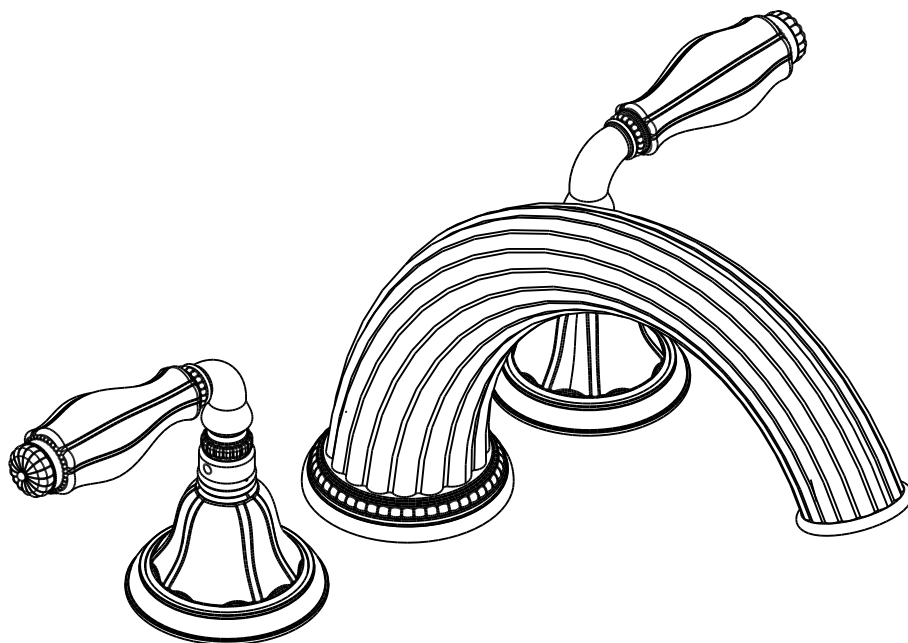
SHERLE



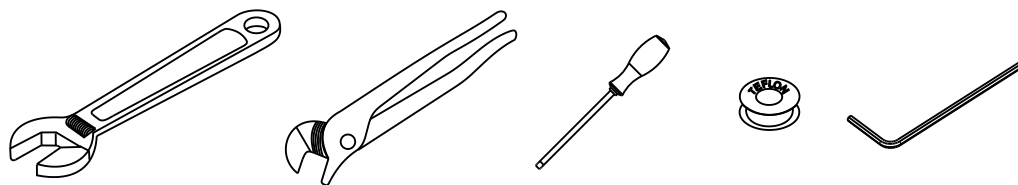
WAGNER  
INTERNATIONAL

## INSTALLATION GUIDE

## DECKMOUNT TUB SET

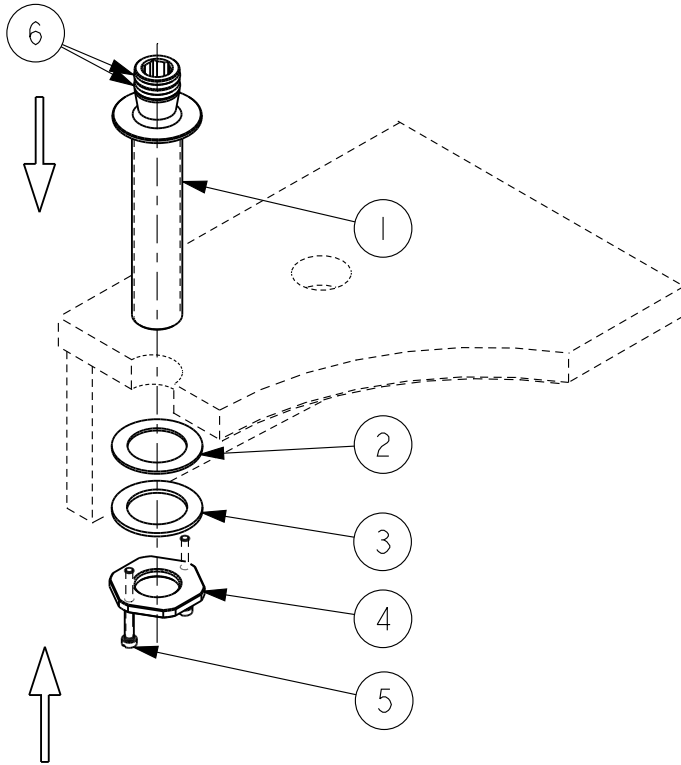


Installation tools that may be needed:



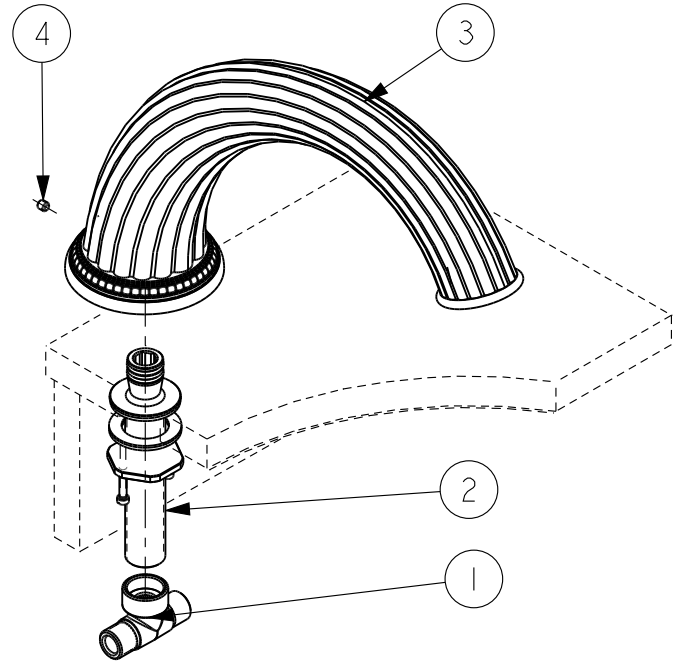
# Spout Installation

1



1. Place quick connect fitting (1) through deck from above.
2. Slide rubber gasket (2) and metal washer (3) onto quick connect fitting (1).
3. Thread mounting nut (4) onto quick connect fitting (1) until nut is secured against bottom of deck.
4. Thread jack screws (5) into mounting nut and tighten screws evenly until secure.
5. Check o-rings (6) to make sure there is no damage or debris.

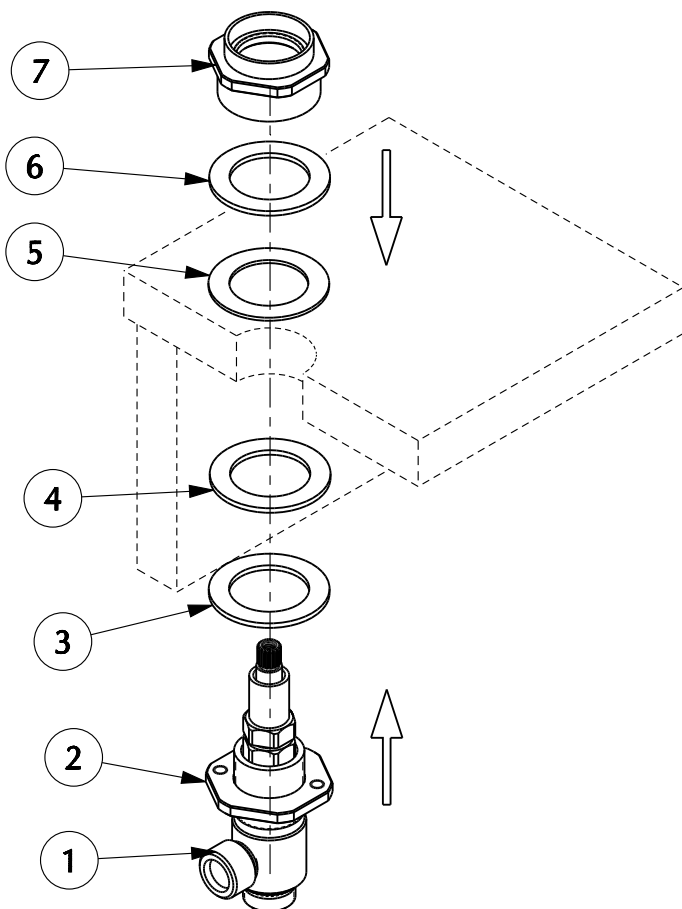
2



1. Mount inlet tee (1) onto quick connect (2). Threads should be sealed with an appropriate thread sealant.
2. Mount spout assembly (3) onto quick connect fitting (2).
3. Secure spout assembly by tightening set screw (4).

# End Valve Installation

3

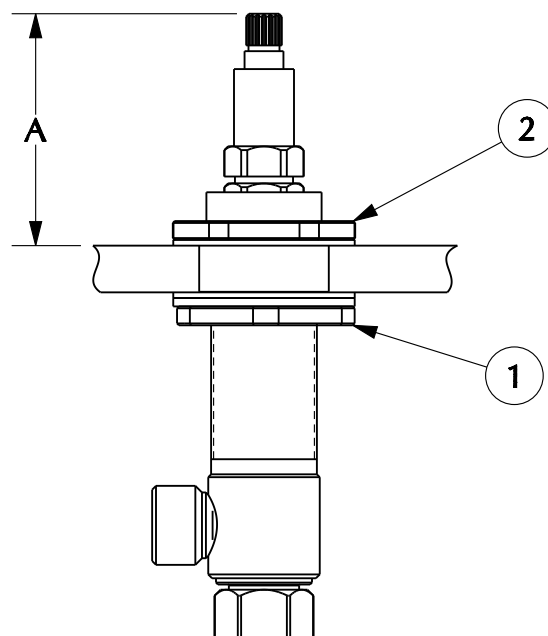


1. Thread bottom mounting nut (2) onto cold end valve (1 - marked with blue label). NOTE: KNOB STYLE MODELS WILL USE HOT END VALVES (RED LABELS) ON THE HOT AND COLD SIDES.

2. Slide metal washer (3) and rubber gasket (4) onto end valve (1), then place end valve (1) up through deck from below.

3. From above the deck, slide rubber gasket (5) and metal washer (6) over end valve (1), then thread valve top mounting nut (7) onto end valve (1). Make sure rubber gasket (5) is properly seated.

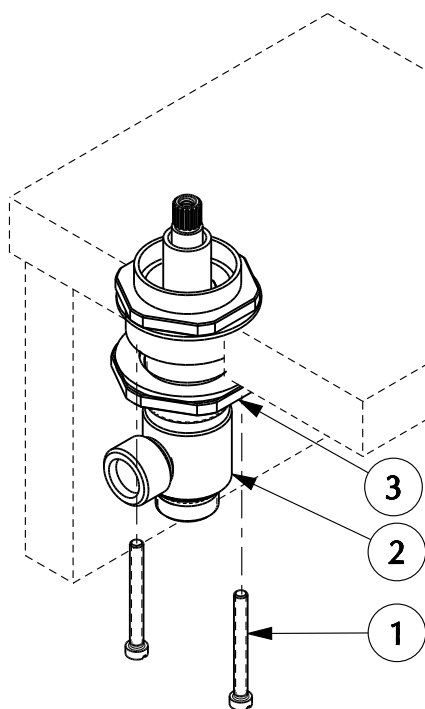
4



1. Referencing the chart on page 7, adjust the bottom mounting nut (1) and top mounting nut (2) as needed to achieve height "A" per the model being installed.

## End Valve Installation

5

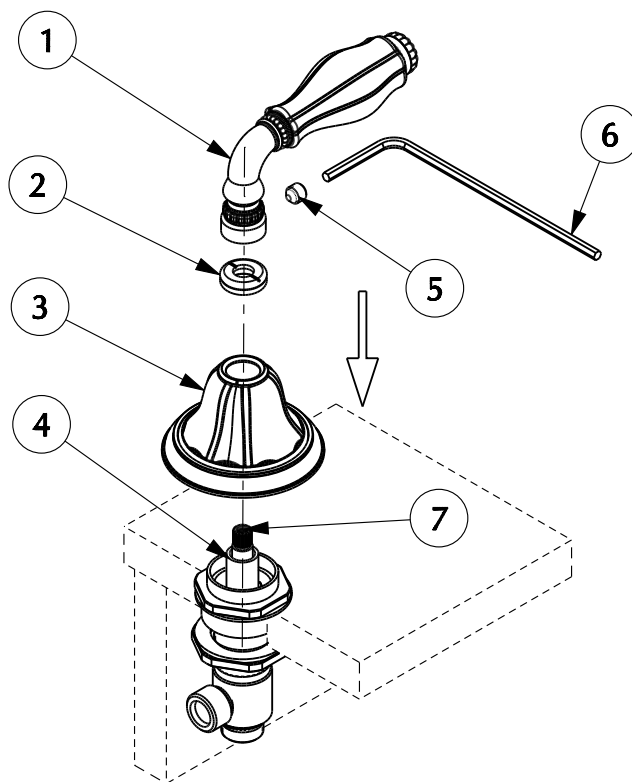


1. Thread jack screws (1) into bottom mounting nut (3) and tighten jack screws evenly until end valve (2) is secured. Adjust bottom mounting nut (3) as needed to allow for clearance for mounting the jack screws.
2. Turn cartridge stem counter-clockwise (clockwise for hot side) until stem stops.

**NOTE: FOR KNOB STYLE MODELS, BOTH CARTRIDGES WILL TURN CLOCKWISE.**

## Handle Installation

6

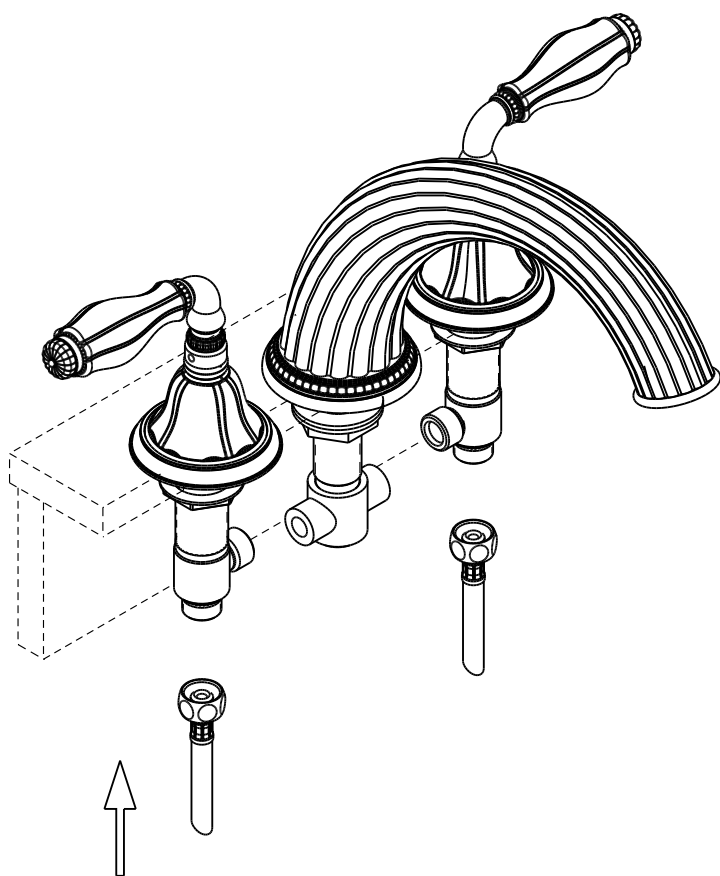


1. Place escutcheon (3) over valve.
2. Thread escutcheon nut (2) onto allthread (4) until secure and escutcheon (3) does not move.  
  
**NOTE:** Some models utilize an escutcheon nut (2) that threads directly into the top of end valve, not the allthread (4). For these models, there will be no allthread (4).
3. Mount lever/knob (1) onto cartridge stem (7) and secure by tightening set screw (5) with hex wrench (6).
4. Turn lever to full off position and check to make sure it is straight. If it requires adjustment, remove set screw (5) and re-install lever/knob (1) to proper position, then re-install set screw (5).



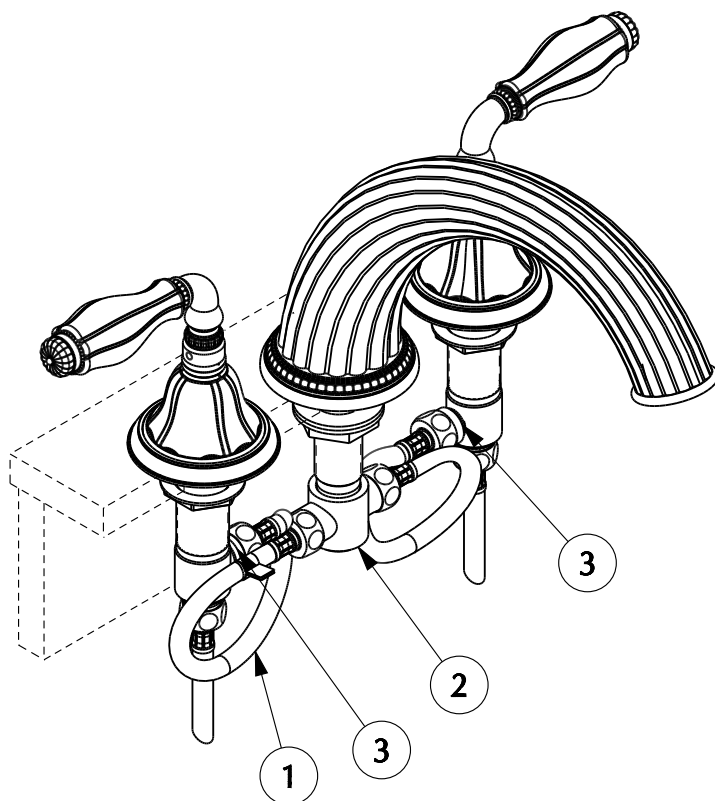
# Water Supply Connection

7



1. Make connections to water supply lines.  
(Supply lines not included.)

8

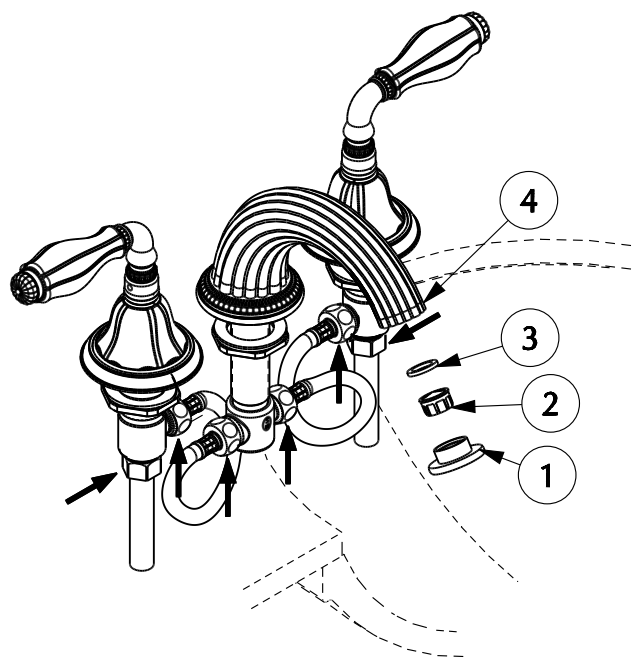


1. Connect included supply hoses (1) to spout inlet tee (2) and both end valves (3). Hand tighten hose connections plus 1/4 turn with a wrench.

**NOTE: 3/4" VALVE MODELS DO NOT INCLUDE SUPPLY HOSES (1) AND SPOUT INLET TEE (2).**

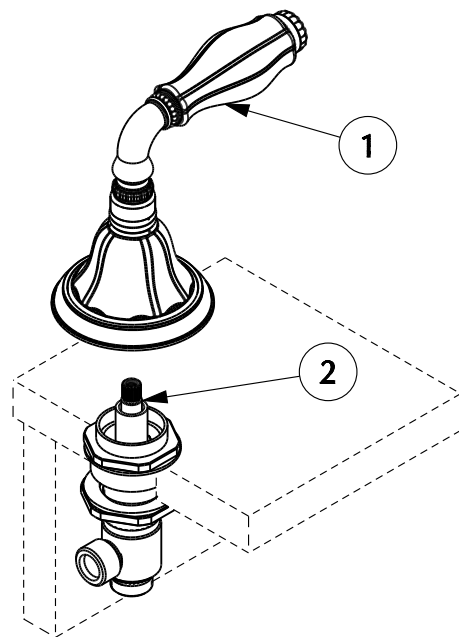
# Flushing System

9



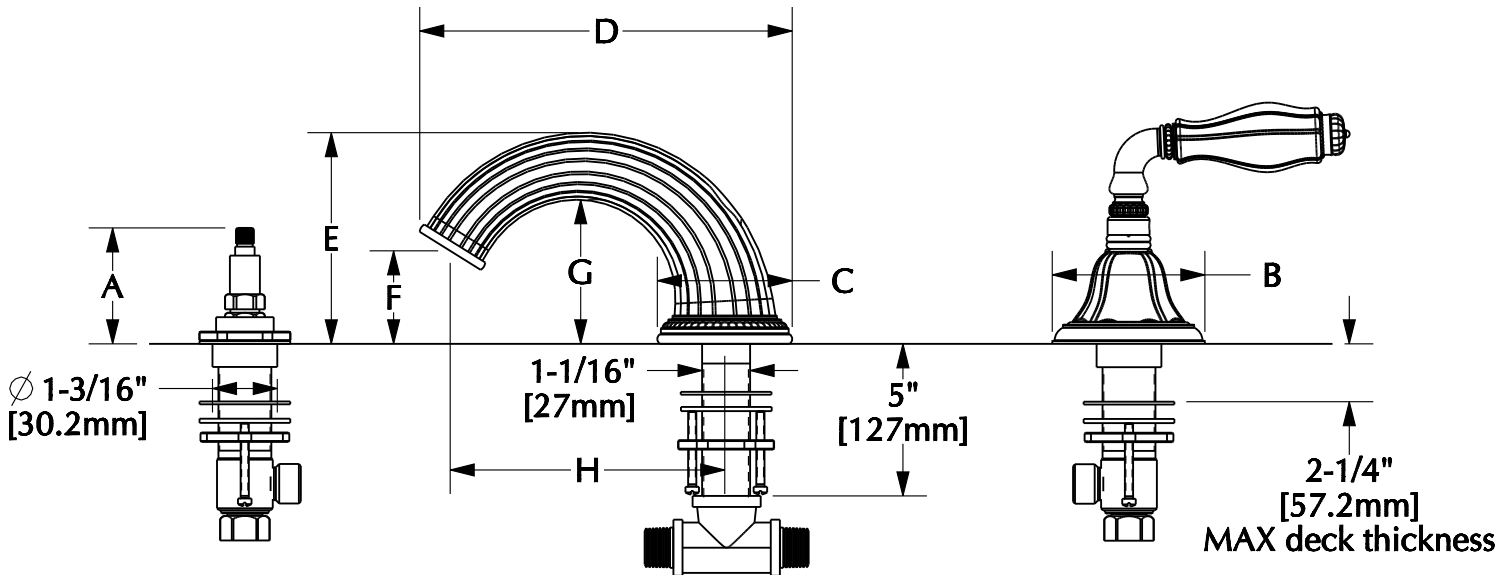
1. Remove aerator housing (1), aerator insert (2) and gasket (3) from spout tip (4).
2. Turn faucet handles to full open position and flush lines. Check all connections at arrows for leaks. Retighten connections if necessary.
3. Reinstall gasket (3), aerator insert (2) and housing (1).

## Cartridge Replacement



1. Remove handle assembly (1).
2. Using 3/4" socket (not supplied), unthread cartridge (2) from body.
3. Using 3/4" socket, install new cartridge into valve body.

# Deckmount Tub Set Dimensions



## Handle Dimensions

Model No.	A	B
0907	2\"	2-1/2\"
	[50.8mm]	[63.5mm]
0910	2-3/8\"	2-3/4\"
	[60.3mm]	[69.9mm]
0912	2-5/8\"	2-7/8\"
	[66.7mm]	[73mm]
0913	2-3/8\"	2-7/8\"
	[60.3mm]	[73mm]
0914	2-1/4\"	3-1/4\"
	[57.2mm]	[82.6mm]
0915	2-5/8\"	2-3/4\"
	[66.7mm]	[69.9mm]
0916	1-3/4\"	2-1/4\"
	[44.5mm]	[57.2mm]
0917	2-5/8\"	2-3/4\"
	[66.7mm]	[69.9mm]
0918	2-5/8\"	2-3/4\"
	[66.7mm]	[69.9mm]
0919	2-5/8\"	2-3/4\"
	[66.7mm]	[69.9mm]
0920	2-5/8\"	2-3/4\"
	[66.7mm]	[69.9mm]
0921	2-5/8\"	2-3/4\"
	[66.7mm]	[69.9mm]
0923	2-3/8\"	2-7/8\"
	[60.3mm]	[73mm]
0931	2-3/8\"	2-3/4\"
	[60.3mm]	[69.9mm]
0932	2-3/8\"	2-3/4\"
	[60.3mm]	[69.9mm]
0933	2-1/4\"	2-3/4\"
	[57.2mm]	[69.9mm]
0934	2-3/8\"	2-5/8\"
	[60.3mm]	[66.7mm]
0980	2-3/8\"	2-7/8\"
	[60.3mm]	[73mm]
0981	2-3/8\"	2-7/8\"
	[60.3mm]	[73mm]
0990	2-3/4\"	2-7/8\"
	[69.9mm]	[73mm]
0991	2-3/4\"	2-7/8\"
	[69.9mm]	[73mm]
0992	2-3/4\"	2-7/8\"
	[69.9mm]	[73mm]
0993	2-3/4\"	2-7/8\"
	[69.9mm]	[73mm]

\* INCLUDES ALL PORCELAIN TRIM

\*\* INCLUDES ALL ONYX, ROSE QUARTZ, ROCK CRYSTAL AND AMETHYST

\*\*\* INCLUDES MALACHITE, TIGER EYE, LAPIS LAZULI AND RHODOCHROSITE

## Spout Dimensions

Item:	Description	C	D	E*	F	G	H*
0801DKT	Apollo	1-3/4\"	10\"	4\"	1-1/2\"	2\"	8-1/2\"
		[44.5mm]	[254mm]	[101.6mm]	[38.1mm]	[50.8mm]	[215.9mm]
0802DKT	Nouveau	1-3/4\"	9-3/4\"	5\"	1-3/4\"	2\"	7-1/2\"
		[44.5mm]	[247.7mm]	[127mm]	[44.5mm]	[50.8mm]	[109.5mm]
0803DKT	Pyramid	2-5/8\"	10-3/8\"	5\"	1-1/4\"	1-1/4\"	9\"
		[66.7mm]	[263.5mm]	[127mm]	[31.8mm]	[31.8mm]	[228.6mm]
0813DKT	Smooth Classic	3-1/4\"	12\"	7-1/4\"	4\"	5-1/2\"	10\"
		[82.6mm]	[304.8mm]	[184.2mm]	[101.6mm]	[139.7mm]	[254mm]
0814DKT	Contemporary	3-1/4\"	11-5/8\"	8\"	3-3/4\"	6-5/8\"	7-3/4\"
		[82.6mm]	[295.3mm]	[203.2mm]	[95.3mm]	[168.3mm]	[196.9mm]
0818DKT	Ribbon & Reed	4-1/4\"	9-3/4\"	3-1/2\"	1-3/4\"	2-1/4\"	7-1/2\"
		[108mm]	[247.7mm]	[88.9mm]	[44.5mm]	[57.2mm]	[109.5mm]
0819DKT	Acanthus	4\"	12\"	5-1/4\"	3-1/4\"	4\"	9\"
		[101.6mm]	[304.8mm]	[133.4mm]	[82.6mm]	[101.6mm]	[228.6mm]
0820DKT	Swan	2-3/4\"	10\"	13-3/4\"	6-1/4\"	10-1/2\"	7\"
		[69.9mm]	[254mm]	[349.3mm]	[158.8mm]	[266.7mm]	[177.8mm]
0821DKT	Classic Textured	3-1/4\"	12\"	7-1/4\"	4\"	5-1/2\"	10\"
		[82.6mm]	[304.8mm]	[184.2mm]	[101.6mm]	[139.7mm]	[254mm]
0822DKT	Louis Seize	3-1/4\"	12\"	7-1/4\"	4\"	5-1/2\"	10\"
		[82.6mm]	[304.8mm]	[184.2mm]	[101.6mm]	[139.7mm]	[254mm]
0823DKT	Filigree	4\"	10-5/8\"	5-7/8\"	3-9/16\"	4-1/4\"	8-1/2\"
		[101.6mm]	[269.9mm]	[149.2mm]	[90.5mm]	[108mm]	[215.9mm]
0824SDKT	Harrison Small	4\"	10-5/8\"	5-7/8\"	3-9/16\"	4-1/4\"	8-1/2\"
		[101.6mm]	[269.9mm]	[149.2mm]	[90.5mm]	[108mm]	[215.9mm]
0824LDKT	Harrison Large	4\"	12\"	5-7/8\"	3-9/16\"	4-1/4\"	9-5/8\"
		[101.6mm]	[304.8mm]	[149.2mm]	[90.5mm]	[108mm]	[244.5mm]
0825DKT	Grey	3-11/16\"	12\"	3-1/4\"	2\"	2-3/4\"	10\"
		[93.7mm]	[304.8mm]	[82.6mm]	[50.8mm]	[69.9mm]	[254mm]

E - INDICATES HIGHEST POINT

H - CENTER OF INLET TO CENTER OF OUTLET

# Deckmount Tub Set Parts List

Item	Part Number	Description
1	14272	Set Screw Kit
2	EXT-KIT-DKMT*	Deckmount Extension Kit
3	CART-1/2-RH	Cartridge - Hot
	CART-1/2-LH	Cartridge - Cold
4	15254	Top Mounting Kit
5	10583	End Valve Mounting Kit
6	11746	Deckmount Kit
7	11745	Spout Mounting Kit
8	VARIOUS**	Aerator Kit
9	11500	Hose - 1/2"
10	13128	Complete End Valve Mounting Kit

\* SPECIFY FINISH WHEN ORDERING  
 \*\* CONTACT SHERLE WAGNER SALES REPRESENTATIVE

