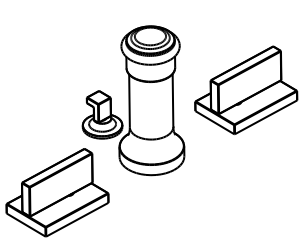




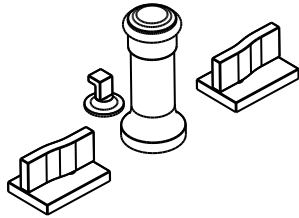
SHERLE WAGNER
architectural

INSTALLATION GUIDE

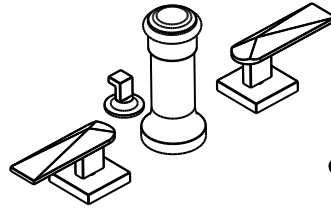
Four Holes Bidet



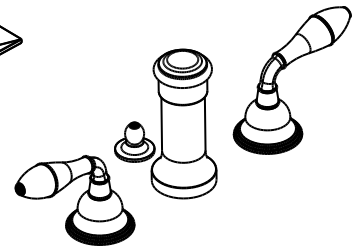
101-001-BDT-4



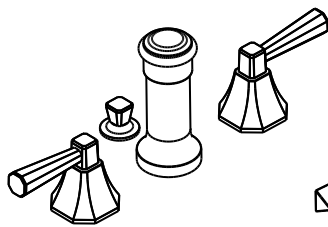
101-002-BDT-4



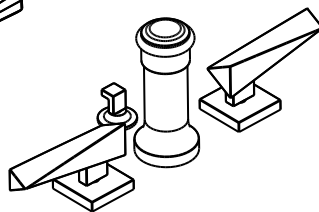
101-003-BDT-4



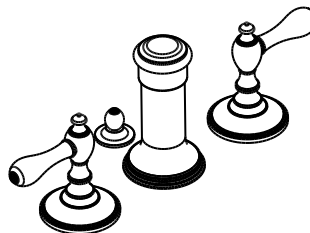
105-005-BDT-4



106-006-BDT-4

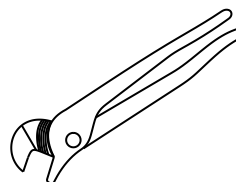
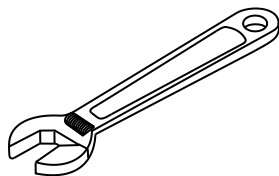


108-008-BDT-4



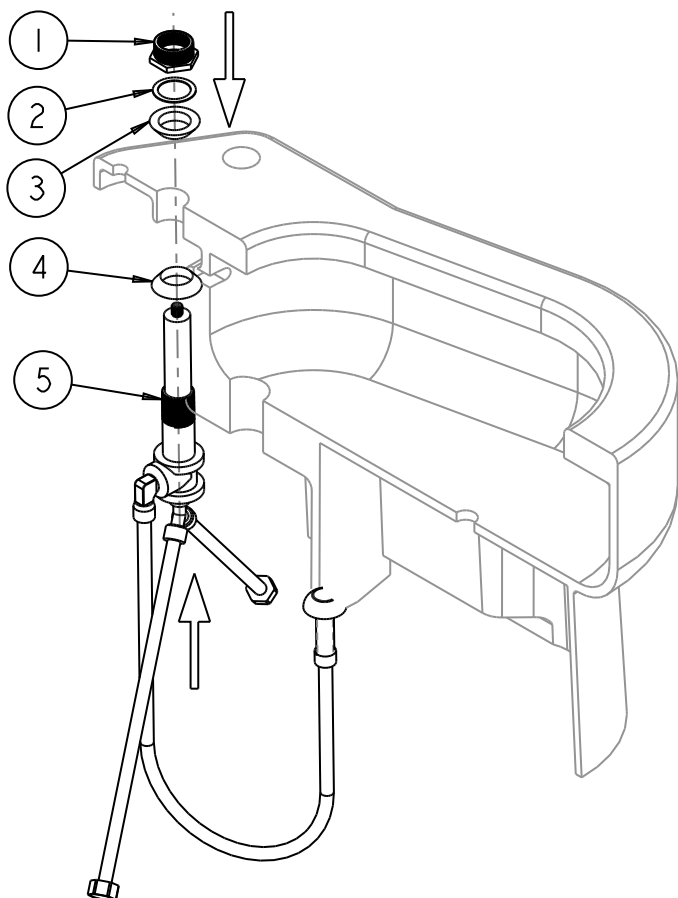
109-009-BDT-4

Installation tools that may be needed:



Round Diverter Installation

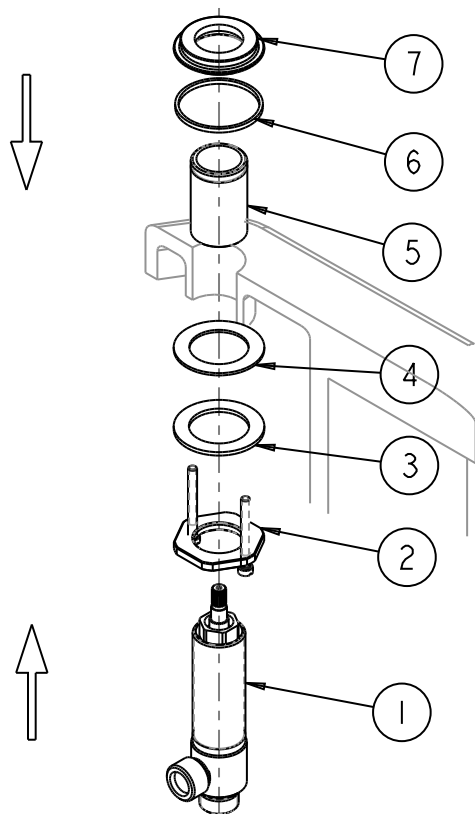
1



1. Insert round diverter assembly (5) through deck and ensure that counter gasket (4) is properly seated in round diverter.
2. Slide rubber gasket (3) and metal bracket (2) onto round diverter shank and thread nut (1) onto shank until round diverter assembly (5) is firmly in place.

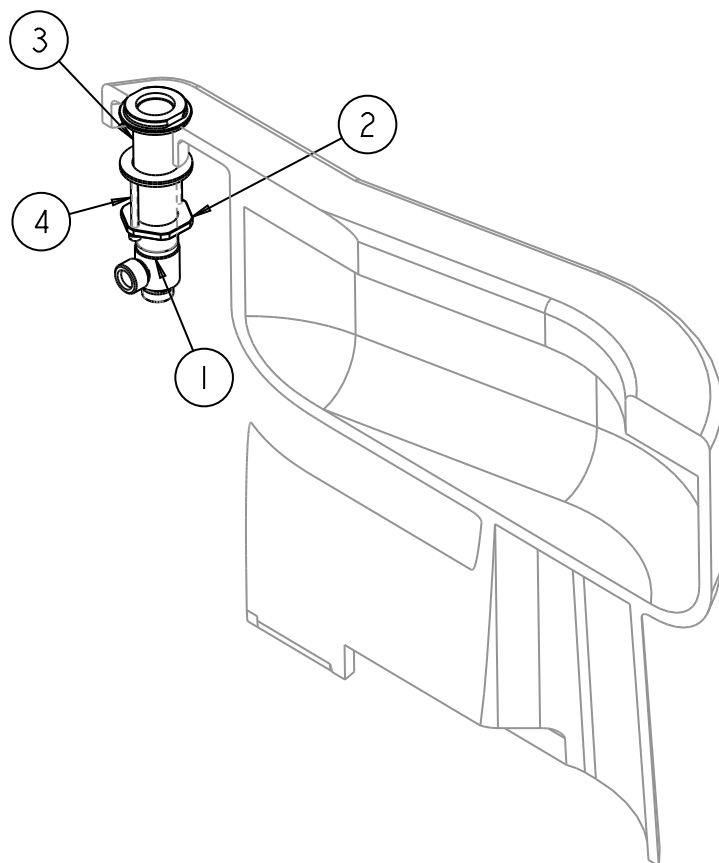
001HDL/002HDL/003HDL/008HDL Handle Mounting Parts/Valve Installation

2A



1. Thread mounting nut (2) onto cold end valve (marked with blue label).
2. Slide metal washer (3) and rubber gasket (4) onto end valve (1), then place end valve (1) up through deck from below.
3. From above the deck, thread valve extension sleeve (5) onto end valve (1) until securely fastened, slide rubber gasket (6) over extension sleeve (5), then thread valve mounting adapter (7) onto valve extension sleeve (5).

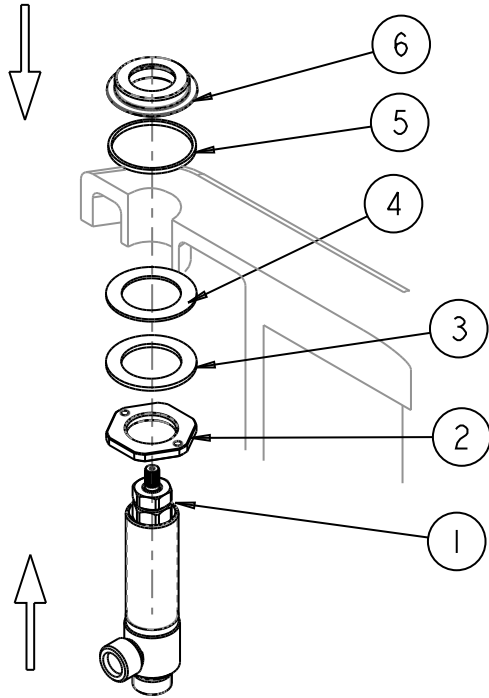
3A



1. Position end valve (1) with side outlet pointing towards spout, then thread mounting nut (2) up end valve (1) until mounting nut is approximately 1/4" from the bottom of valve extension sleeve (3) or until it bottoms out on deck surface.
2. Thread jack screws (4) into mounting nut (2) and tighten jacks screws evenly with a screw driver until end valve is secured. Adjust mounting nut as needed to allow for clearance for the mounting jack screws.
3. Turn cartridge stem counterclockwise (clockwise for hot side) until stem stops. Valve is now in the closed position.
4. Repeat steps 2A and 3A for the hot end valve (marked with red label).

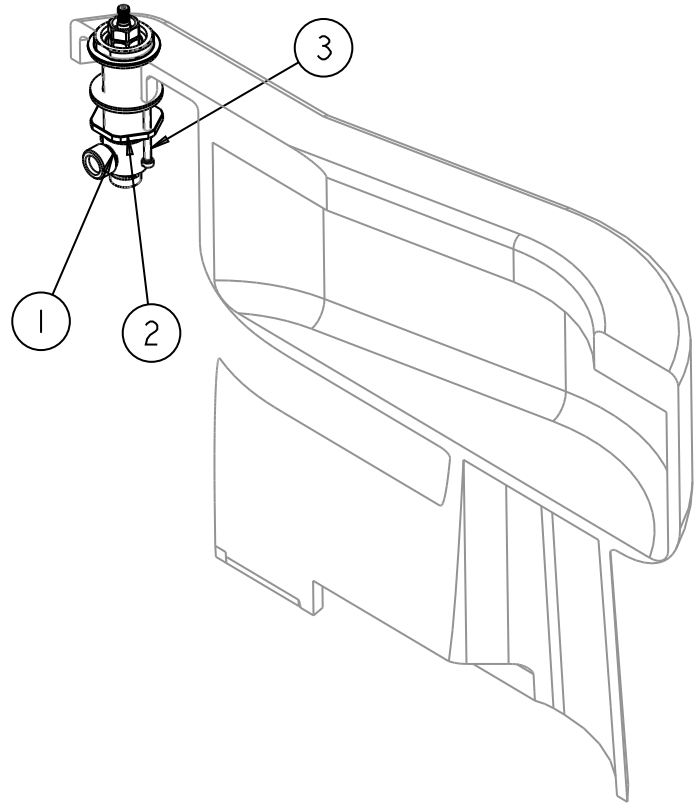
005HDL/006HDL/009HDL Handle Mounting Parts/Valve Installation

2B



1. Thread mounting nut (2) onto cold end valve (1—marked with blue label).
2. Slide metal washer (3) and rubber gasket (4) onto end valve (1), then place end valve (1) up through deck from below.
3. From above the deck, slide rubber gasket (5) over end valve (1), then thread valve mounting adapter (6) onto end valve (1). Make sure gasket (5) is properly seated.

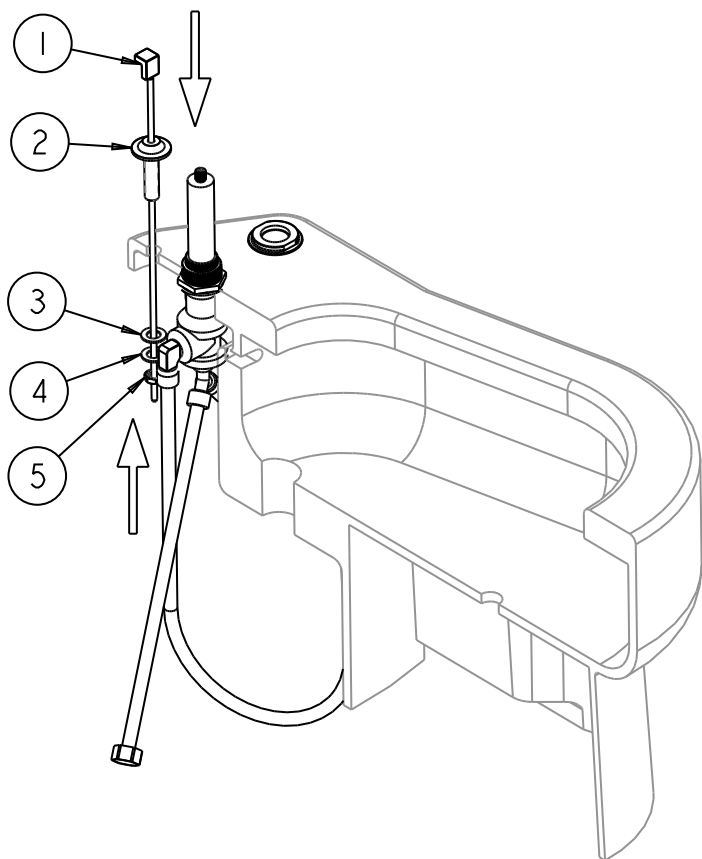
3B



1. Position end valve (1) with side outlet pointing towards spout, then thread mounting nut (2) up end valve (1) until mounting nut (2) touches surface of deck..
2. Thread jack screws (3) into mounting nut (2) and tighten jack screws evenly with a screw driver until end valve is secured. Adjust mounting nut (2) as needed to allow for clearance for mounting the jack screws.
3. Turn cartridge stem counterclockwise (clockwise for hot side) until stem stops. Valve is now in the closed position.
4. Repeat steps 2B and 3B for the hot end valve (marked with red label).

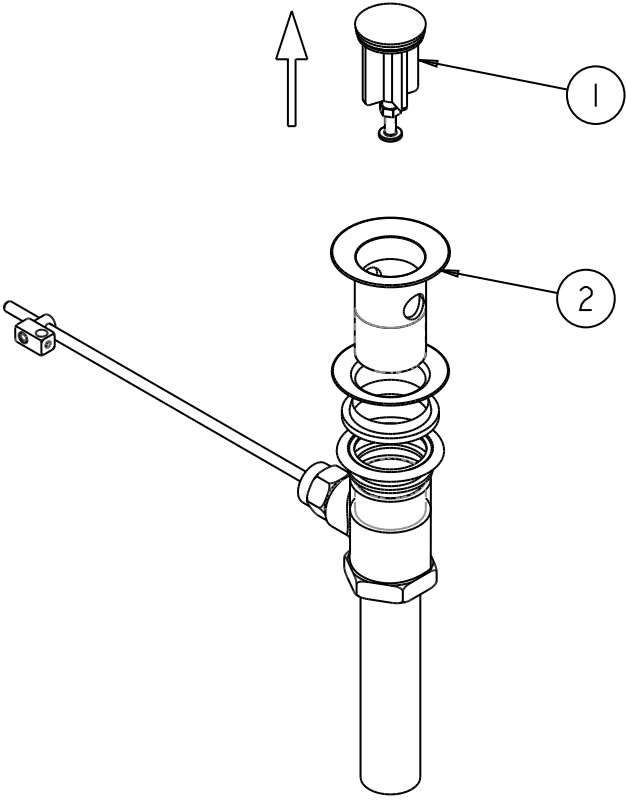
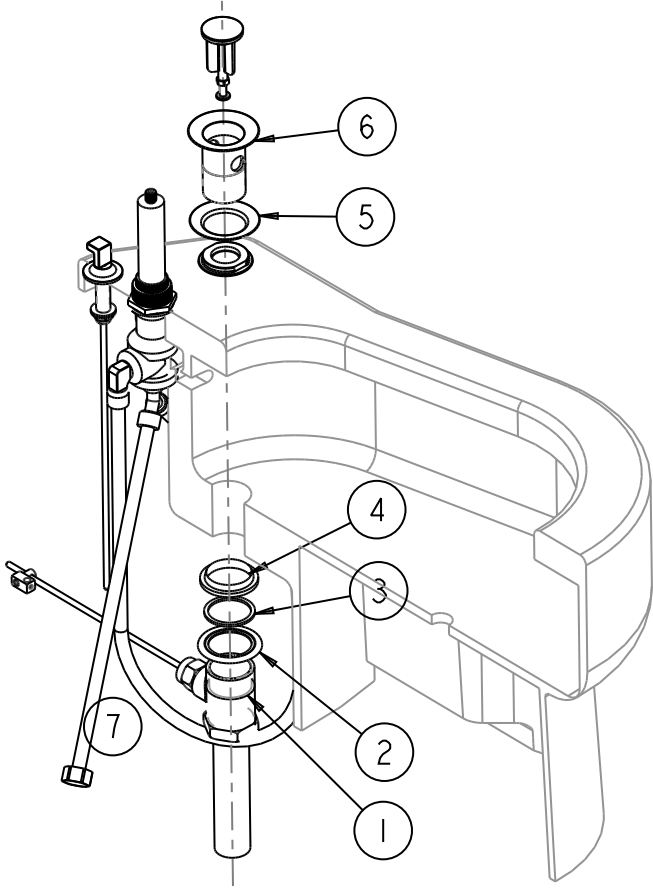
Lift Rod Installation

4



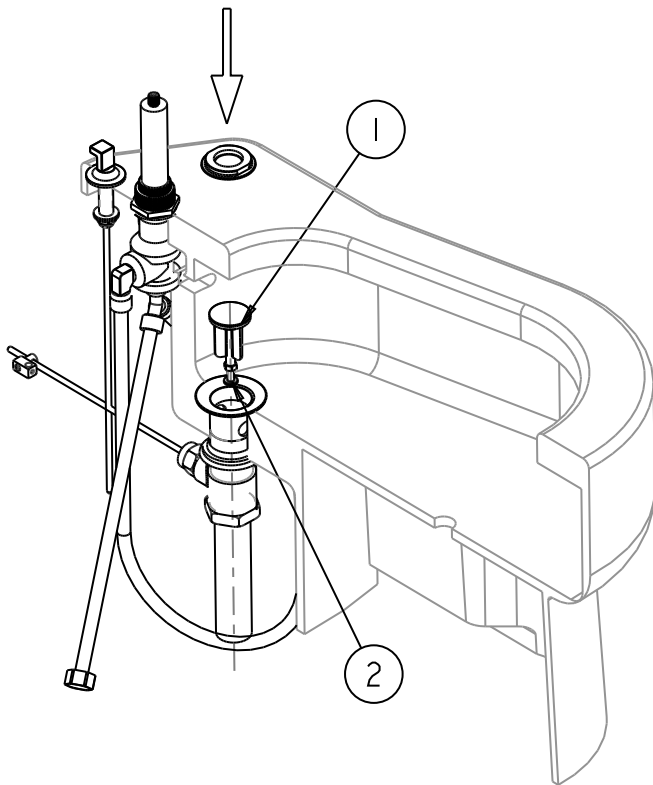
1. Place lift rod escutcheon (2) on deck.
2. Slide rubber gasket (3) and metal washer (4) onto lift rod escutcheon (2) through deck from below, then thread nut (5) onto end lift rod escutcheon (2) until firmly.
3. Insert lift rod assembly (1) through hole on lift rod escutcheon (2).

Standard Pop-Up Waste Installation

5	6
	
<p>1. Remove stopper (1) and flange (2).</p>	<p>1. Place rubber gasket (3) and washer (2) onto body (1).</p> <p>2. Slide gasket (4) and rubber washer (5) onto flange (6). NOTE: Rubber washer (5) can be replaced with caulking or other suitable sealing for the sink material.</p> <p>3. Screw flange (6) into body (1). IMPORTANT: PIVOT ROD (7) MUST POINT BACK TOWARDS LIFT ROD.</p>

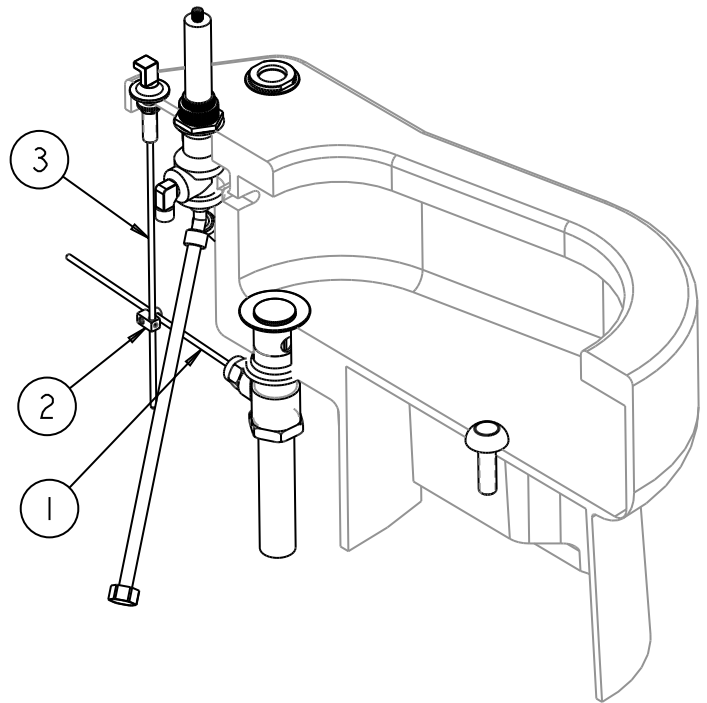
Standard Pop-Up Waste Installation

7



3. Insert the stopper (1). Adjust stopper screw (2) as needed to allow for proper operation.

8

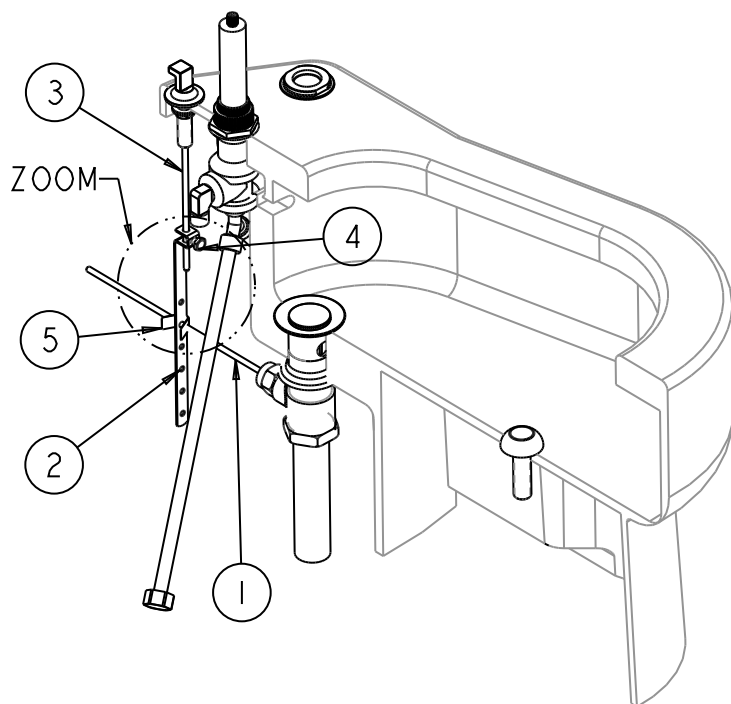


1. Push pivot rod (1) down to place pop-up in full open position. Check that lift rod (3) is in full down position.
2. Attach pivot rod (1) to lift rod (3) using adapter (2).
3. Connect drain pipe to bottom of pop-up waste.

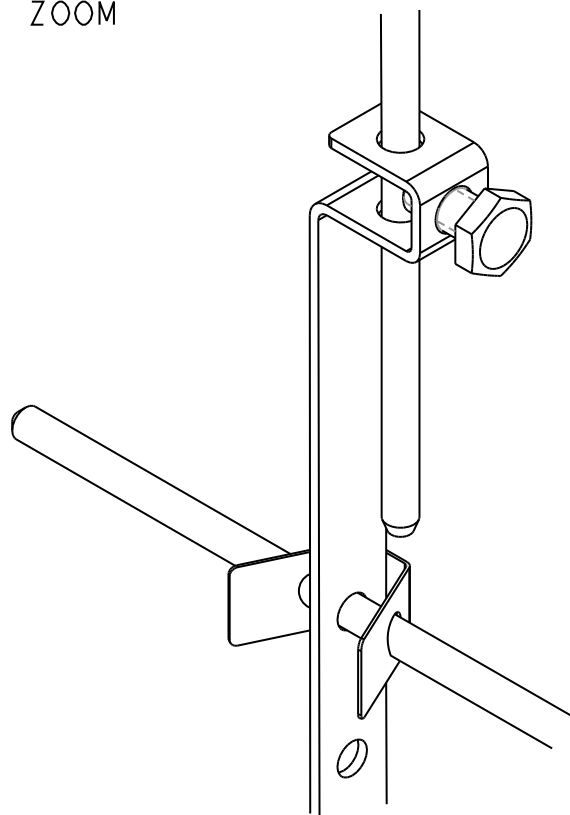
Note: If lift rod (3) does not reach adapter (2), proceed to step 13A to install lift rod extension strap.

Standard Pop-Up Extension Installation

9



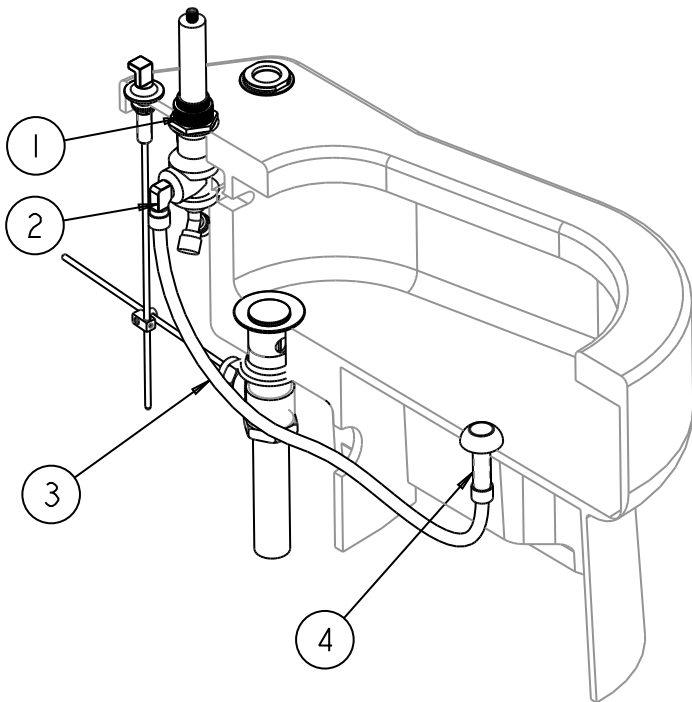
ZOOM



1. Push pivot rod (1) down to place pop-up in full open position.
2. Attach strap (2) to pivot rod (1) using clip (5). Install lift rod (3) in full down position.
3. Thread bolt (4) until tight.
4. Connect drain pipe to bottom of pop-up waste.

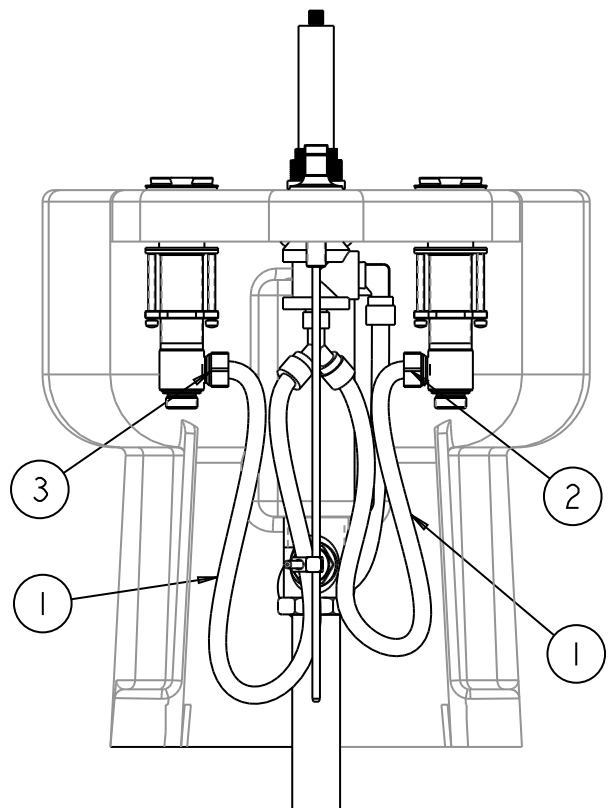
Four Holes Bidet - Water Supply Connection

10



1. Mount elbow (2) onto diverter (1).
1. Connect hose (3) between spray (4) and elbow (2) on diverter valve.

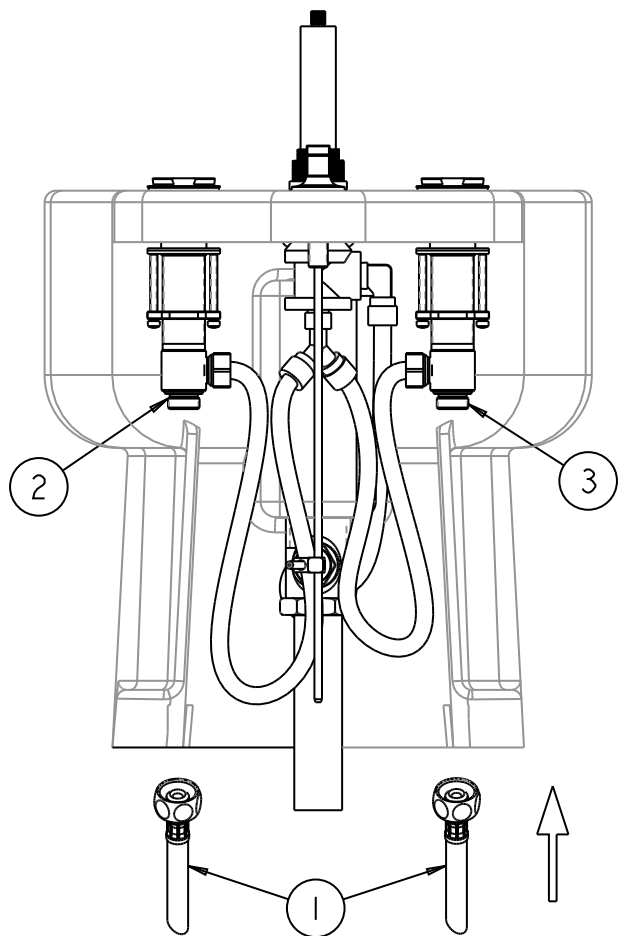
11



1. Connect hose (1) between "Y" and hot and cold valves (2) and (3). Hand tighten hose connections plus 1/4 turn with a wrench.

Four Holes Bidet - Water Supply Connection

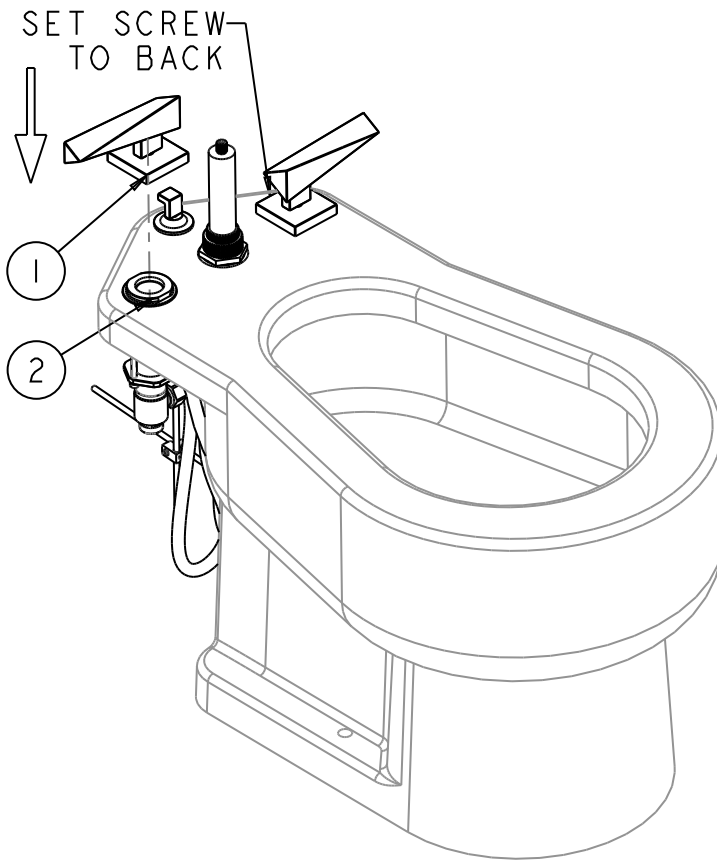
12



1. Connect water supply lines (1) (Supply lines not included) to end valves (2) and (3).

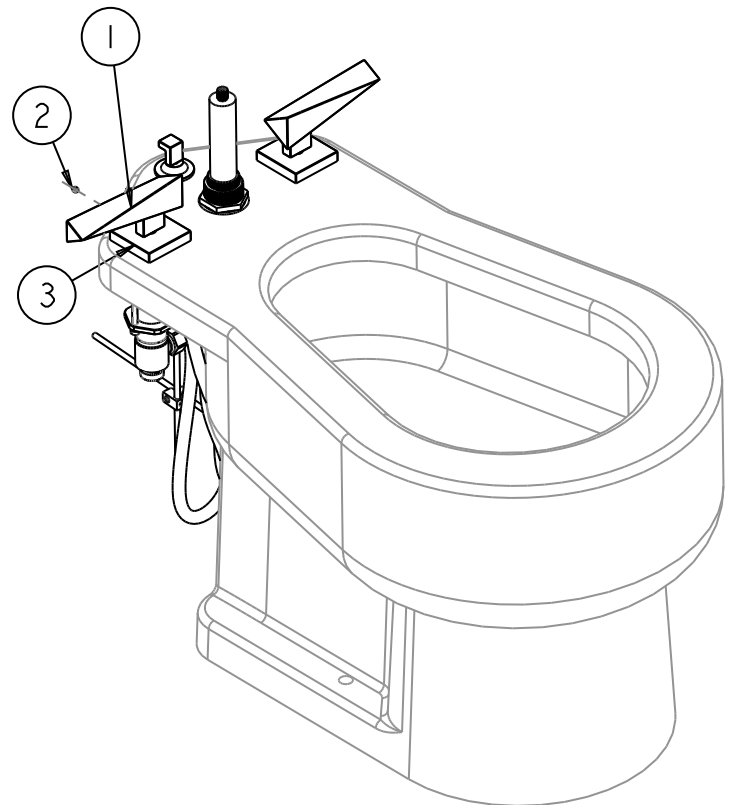
001HDL/002HDL/003HDL/006HDL/008HDL Handle Installation

13A



1. 008 handle assemblies are unique for hot and cold sides. Make sure set screw hole in escutcheon is pointing towards the back as shown above.
2. Place handle assembly (1) over valve mounting adapter (2). Lever will engage cartridge stem below the deck. Take care to position lever in a straight line in the full off position. If lever is not straight, remove and adjust position on stem. If lever is still not able to be placed straight, loosen valve and rotate valve to adjust lever straightness. Retighten valve.

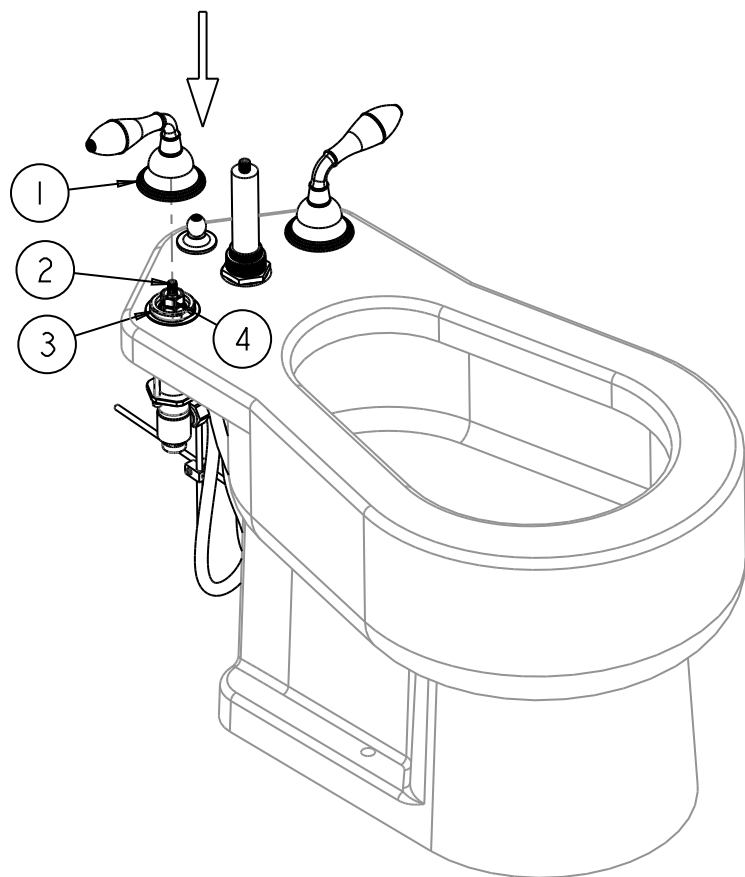
14A



1. Position escutcheon (3) in straight line relative to lever (1) and tighten set screw (2).
2. Rotate lever (1) in order to ensure proper operation.
3. Repeat steps 13 and 14 for the cold handle assembly.

005HDL/009HDL Handle Installation

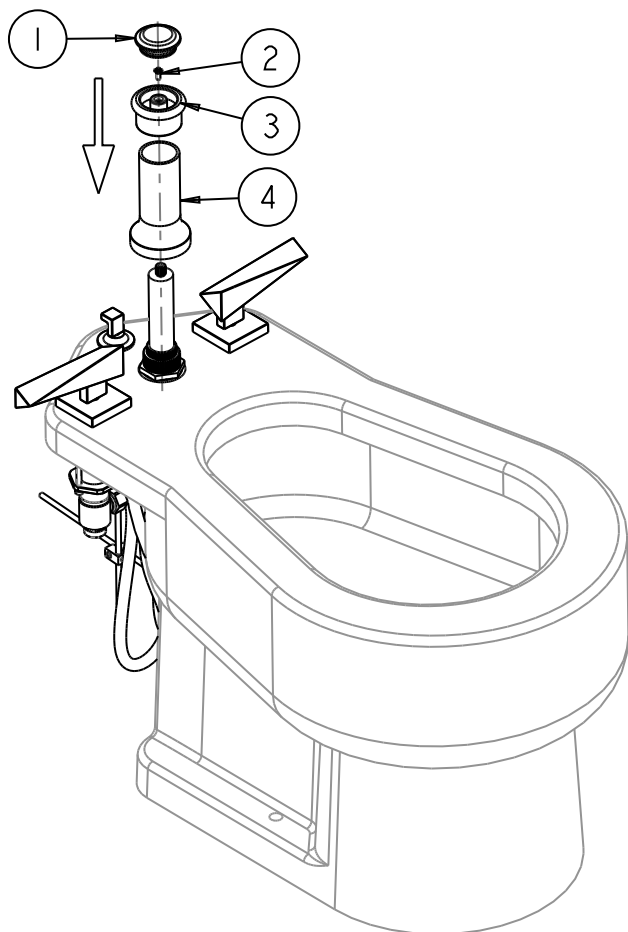
13B



1. Place handle assembly (1) on stem (2) taking care to position lever in a straight line in the full off position. If lever is not straight, remove and adjust position on stem. If lever is still not able to be placed straight, loosen valve and rotate valve to adjust lever straightness. Retighten valve.
2. Thread escutcheon of handle assembly (1) onto valve mounting adapter (3). Escutcheon should be flush to the counter.
3. Repeat steps 3, 4, and 5 for the hot end valve (marked with red label) and hot handle assembly.
4. To increase stiffness of handle lever rotation, tighten torsion nut (4) on top of cartridge.

Round diverter Handle Installation

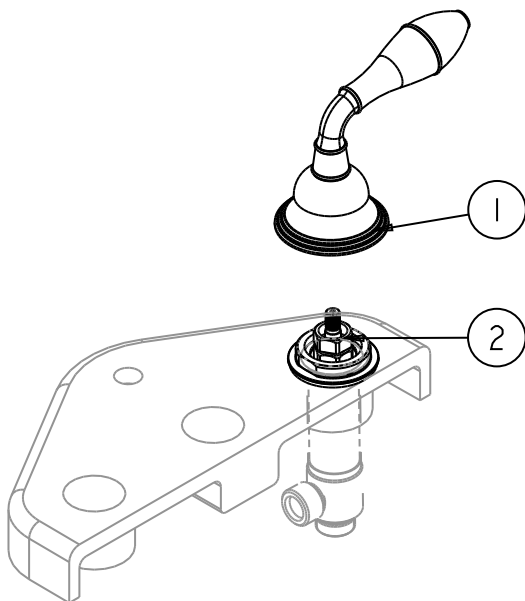
15



1. Thread escutcheon (4) onto round diverter until firmly in place.
2. Mount handle (3) onto escutcheon (4) with screw (2).
3. Press cap (1) into handle (3), ensure o-ring is in cap (1) groove.

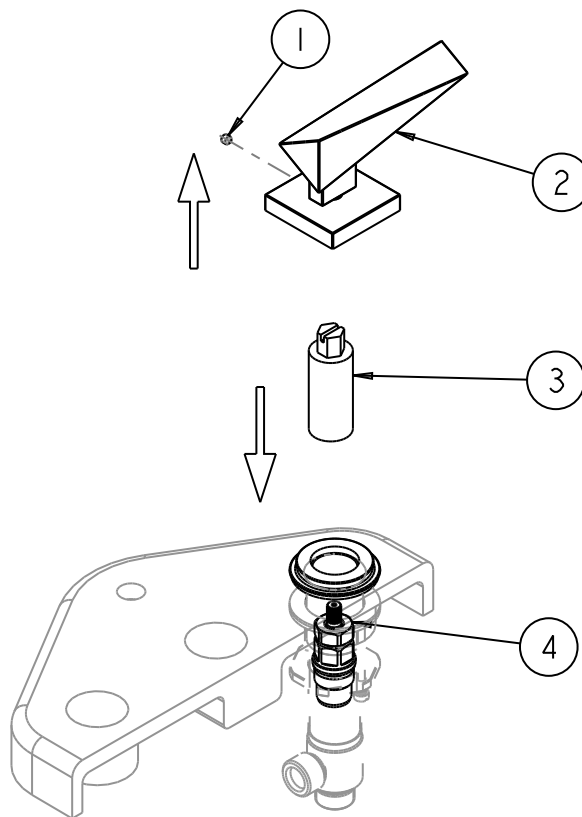
Cartridge Replacement

005HDL/006HDL/009HDL Cartridge Replacement



1. Remove handle assembly (1).
2. Using 3/4" socket (not supplied), unthread cartridge (2) from body.
3. Using 3/4" socket, install new cartridge into valve body.

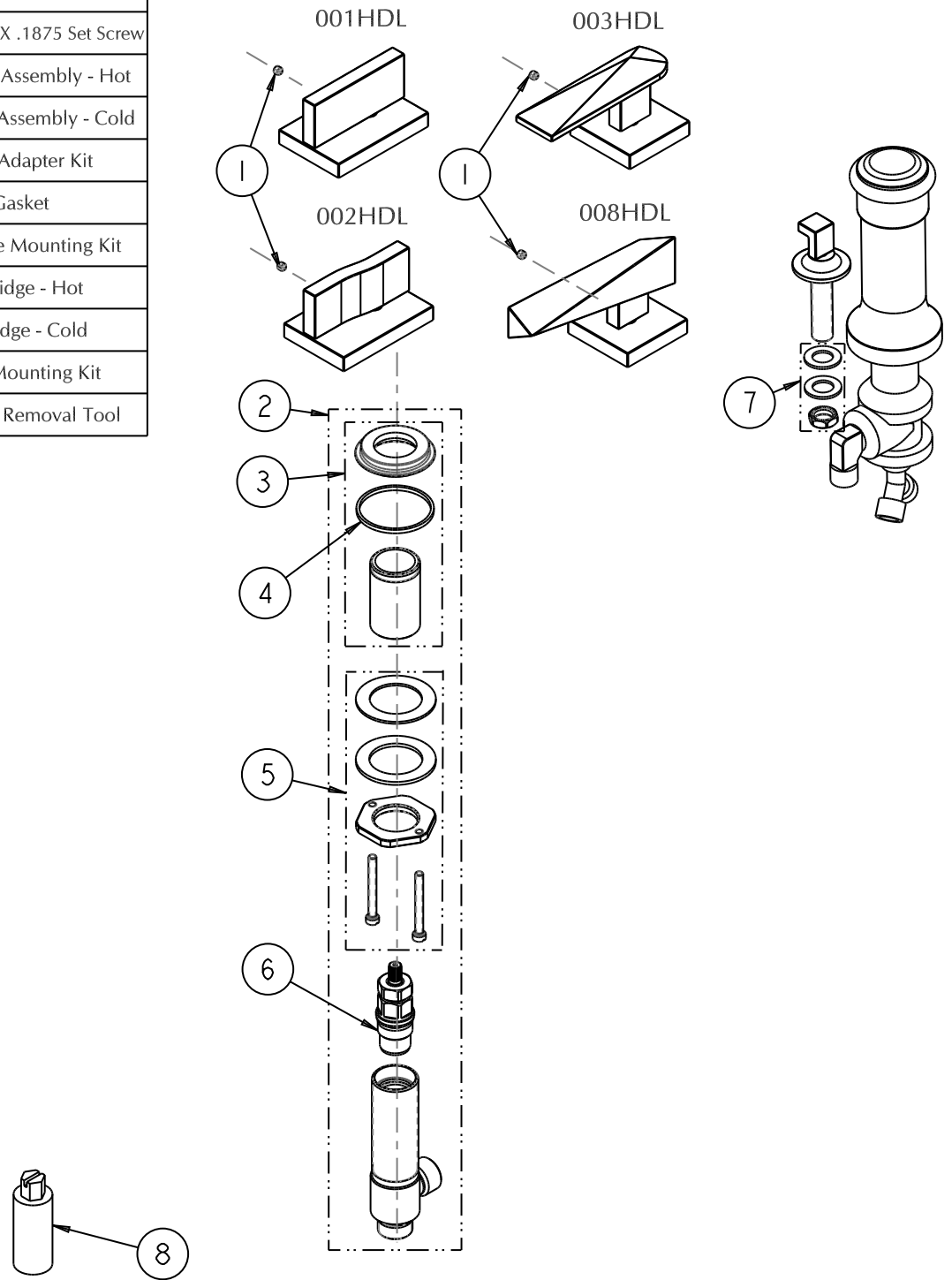
001HDL/002HDL/003HDL/008HDL Cartridge Replacement



1. Loosen set screw (1) and remove handle assembly (2).
2. Using 10402 Cartridge removal tool (3) (not supplied) and either a screw driver or 1/2" socket, unthread cartridge (4) from body.
3. Using 10402 cartridge removal tool, install new cartridge into valve body.

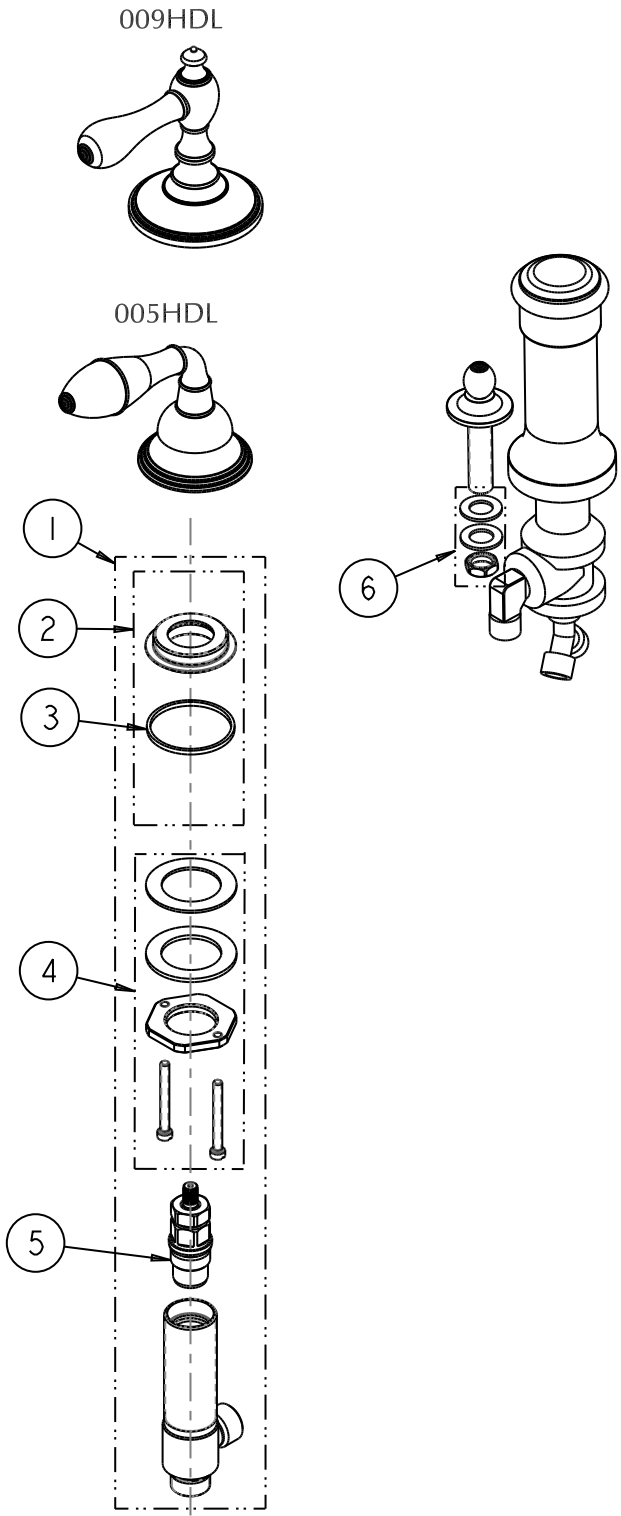
101-001/002/003/008-BDT-4 Parts List

ITEM	PART NUMBER	DESCRIPTION
1	11926	10-24/10-32 X .1875 Set Screw
2	10152	End Valve Assembly - Hot
	10153	End Valve Assembly - Cold
3	10609	Deck Adapter Kit
4	10018	Gasket
5	10583	End Valve Mounting Kit
6	10039	Cartridge - Hot
	10137	Cartridge - Cold
7	12072	Deck Mounting Kit
8	10402	Cartridge Removal Tool



105/109-005/009-BDT-4 Parts List

ITEM	PART NUMBER	DESCRIPTION
1	10150	End Valve Assembly - Hot
	10151	End Valve Assembly - Cold
2	10582	Deck Adapter Kit
3	10018	Gasket
4	10583	End Valve Mounting Kit
5	10039	Cartridge - Hot
	10137	Cartridge - Cold
6	12072	Deck Mounting Kit



106-006-BDT-4 Parts List

ITEM	PART NUMBER	DESCRIPTION
1	11926	10-24/10-32 X .1875 Set Screw
2	10048	End Valve Assembly - Hot
	10049	End Valve Assembly - Cold
3	10582	Deck Adapter Kit
4	10018	Gasket
5	10583	End Valve Mounting Kit
6	10039	Cartridge - Hot
	10137	Cartridge - Cold
7	12072	Deck Mounting Kit

