

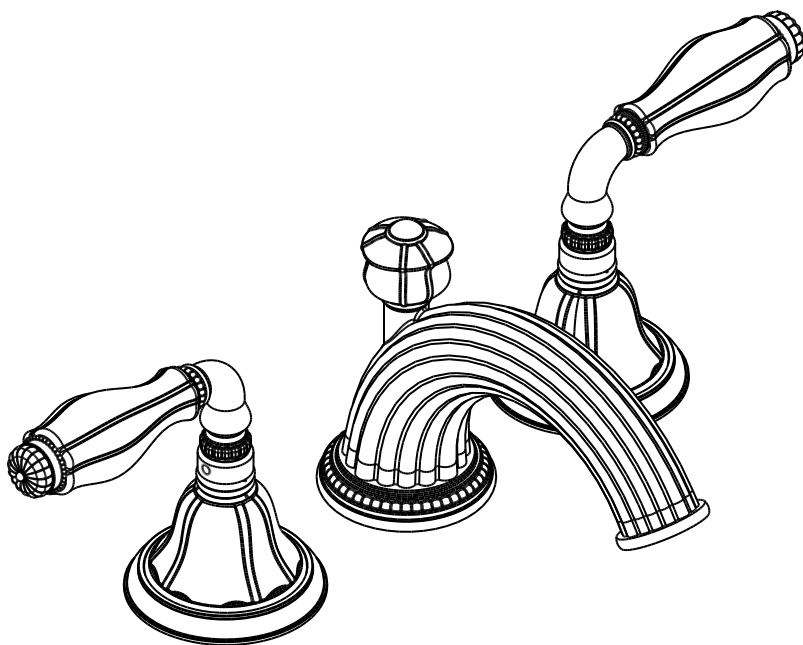
SHERLE



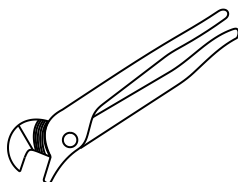
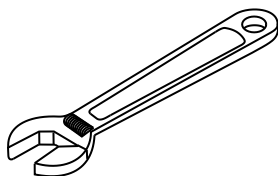
WAGNER
INTERNATIONAL

INSTALLATION GUIDE

LAVATORY BASIN SET

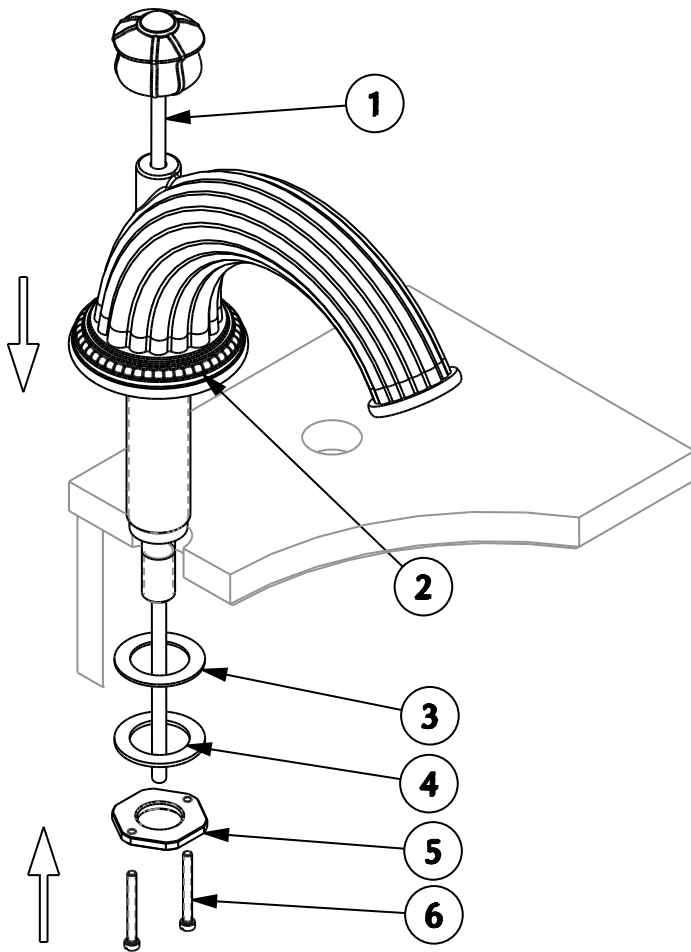


Installation tools that may be needed:



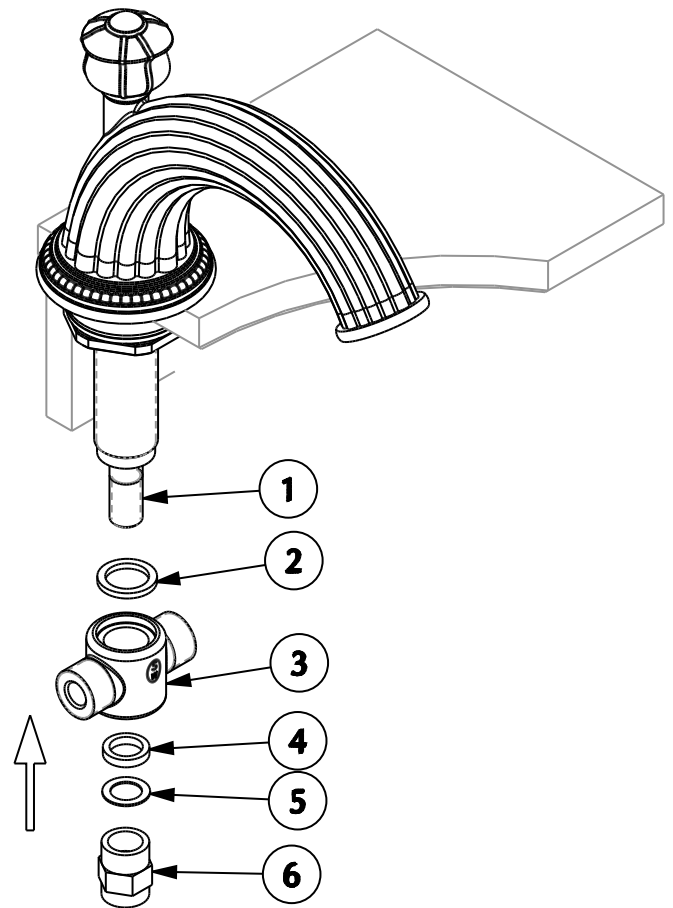
Spout Installation

1



1. Insert spout assembly (2) through deck.
2. Insert lift rod assembly (1) through hole on center of spout.
3. Slide rubber gasket (3) and metal washer (4) onto spout shank and thread nut (5) onto shank
4. Thread jack screws (6) into mounting nut (5) and tighten jack screws evenly with a screw driver until spout is secured.

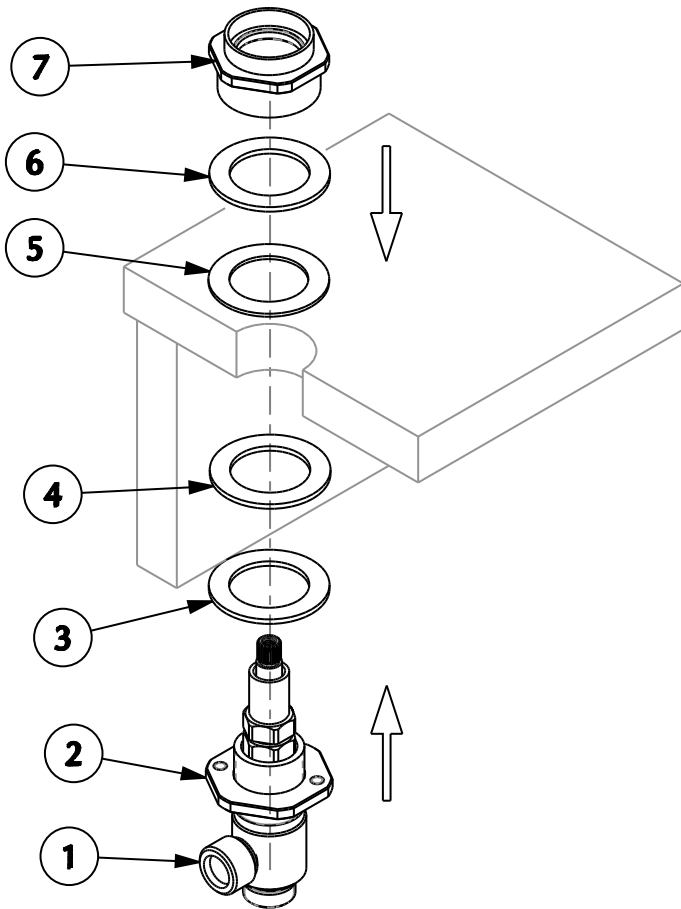
2



1. Place large rubber gasket (2) into tee connector (3). Slide tee connector (3) over the shank (1) until tee bottoms out on shank. **MAKE SURE THE RUBBER GASKET (2) IS PROPERLY SEATED IN TEE CONNECTOR.**
2. Slide small rubber gasket (4) and fiber gasket (5) onto shank (1) until rubber gasket (4) is seated inside bottom of tee (3). Thread nut (6) until tight and fully compresses rubber gasket (4).

End Valve Installation

3

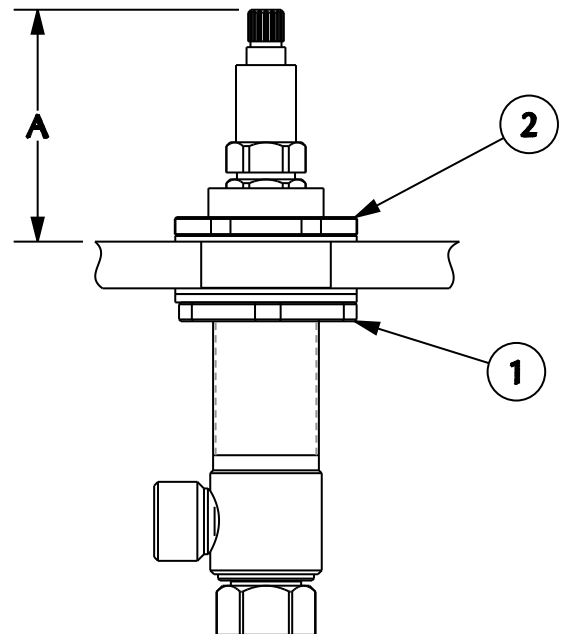


1. Thread bottom mounting nut (2) onto cold end valve (1 - marked with blue label).

NOTE: KNOB STYLE MODELS WILL USE HOT END VALVES (RED LABELS) ON THE HOT AND COLD SIDES.

2. Slide metal washer (3) and rubber gasket (4) onto end valve (1), then place end valve (1) up through deck from below.
3. From above the deck, slide rubber gasket (5) and metal washer (6) over end valve (1), then thread valve top mounting nut (7) onto end valve (1). Make sure rubber gasket (5) is properly seated.

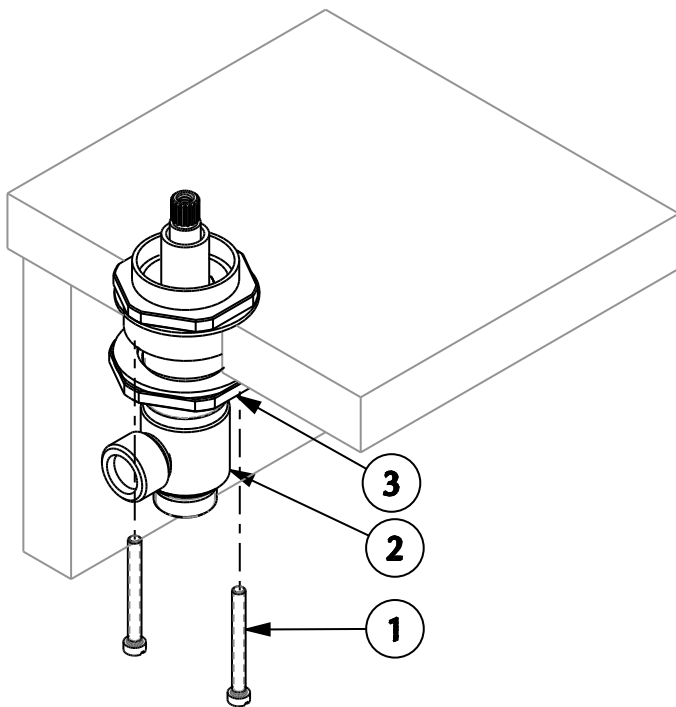
4



1. Referencing the chart on page 12, adjust the bottom mounting nut (1) and top mounting nut (2) as needed to achieve height "A" per the model being installed.

End Valve Installation

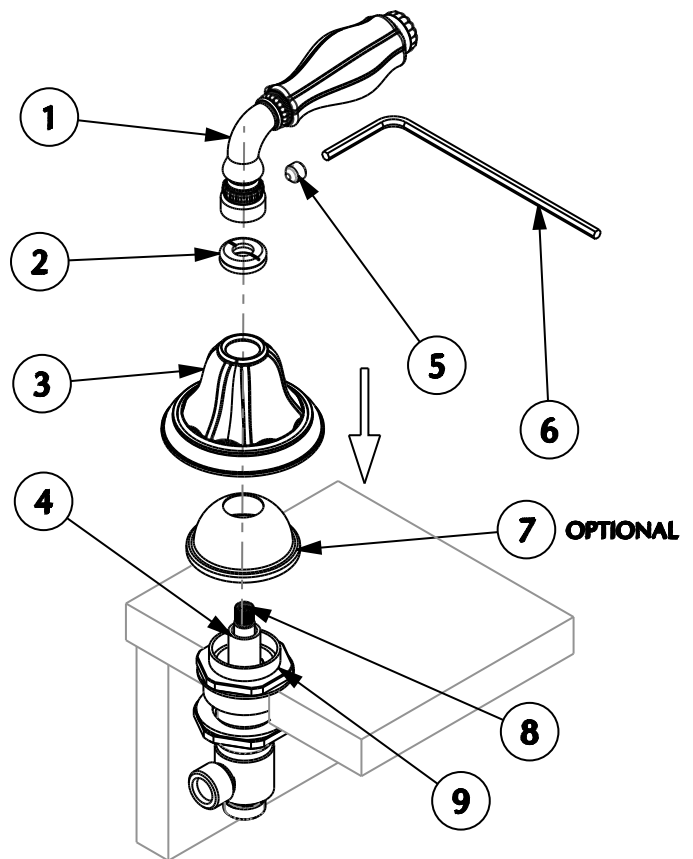
5



1. Thread jack screws (1) into bottom mounting nut (3) and tighten jack screws evenly until end valve (2) is secured. Adjust bottom mounting nut (3) as needed to allow for clearance for mounting the jack screws.
2. Turn cartridge stem counter-clockwise (clockwise for hot side) until stem stops.

Handle Installation

6

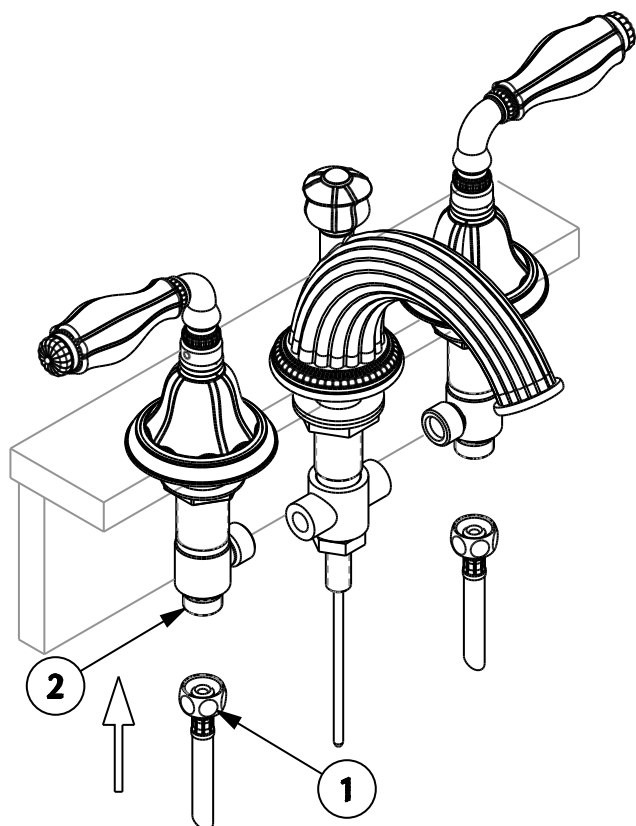


1. **OPTIONAL:** For sets with a translucent escutcheon, place valve cover (7) over valve (9) until valve cover (7) sits on deck.
2. Place escutcheon (3) over valve (9).
3. Thread escutcheon nut (2) onto allthread (4) until secure and escutcheon (3) does not move.

NOTE: Some models utilize an escutcheon nut (2) that threads directly into the top of end valve, not the allthread (4). For these models, there will be no allthread (4).
4. Mount lever/knob (1) onto cartridge stem (8) and secure by tightening set screw (5) with hex wrench (6).
5. Turn lever to full off position and check to make sure it is straight. If it requires adjustment, remove set screw (5) and re-install lever/knob (1) to proper position, then re-install set screw (5).

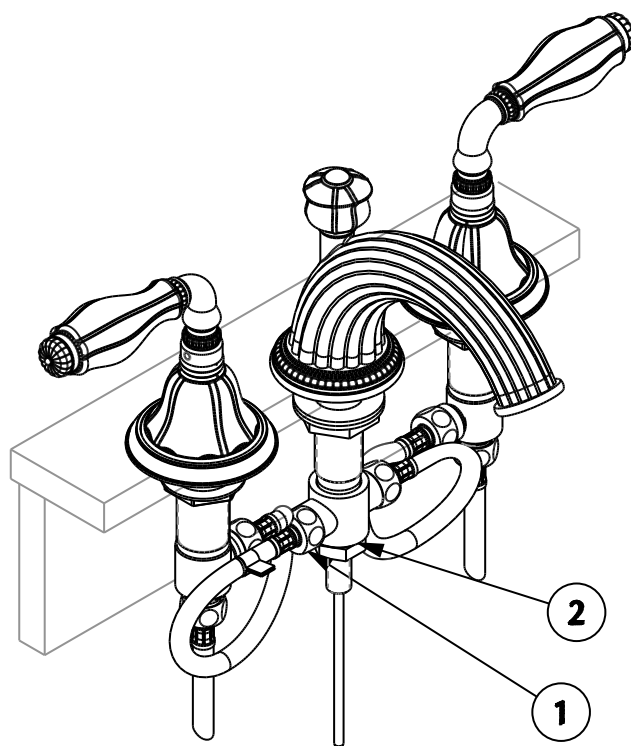
Water Supply Connection

6



1. Connect water supply lines (1) to end valves (2).
(Supply lines not included.)

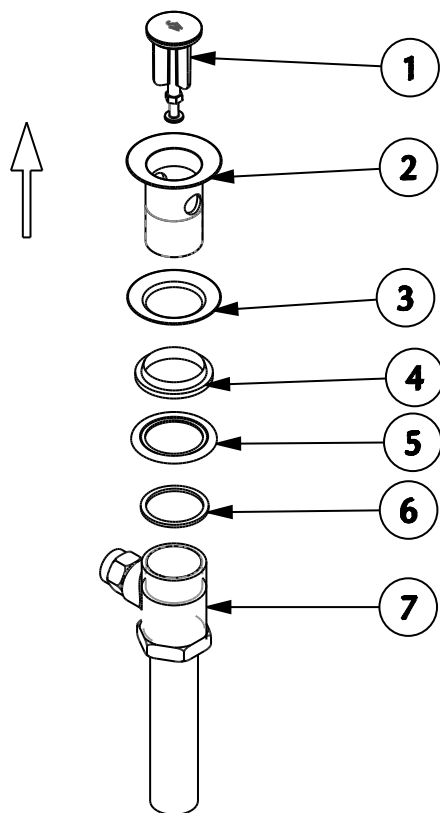
7



1. Connect included supply hoses (1) to spout inlet tee (2). Hand tighten hose connections plus 1/4 turn with a wrench.

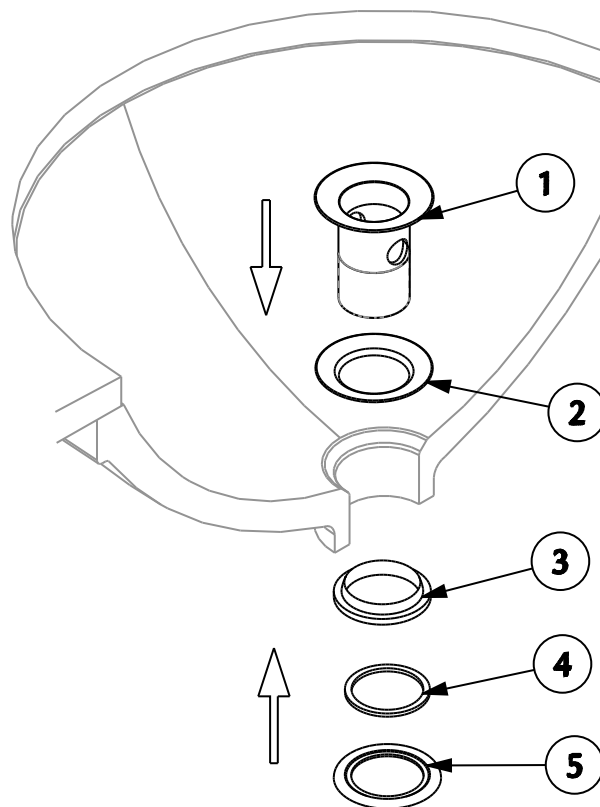
Pop-Up Waste Installation

9



1. Remove stopper (1) and unscrew drain flange (2) from pop-up assembly tee (7).
2. Remove fiber washer (6), metal washer (5) and rubber gasket (4) from drain flange (2).

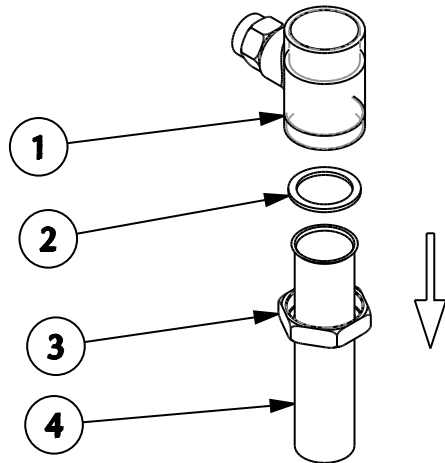
10



1. Insert drain flange (1) into drain hole of sink while making sure that rubber gasket (2) is properly seated.
2. Mount rubber gasket (3), metal washer (4) and fiber washer (5) onto threaded area of drain flange (1) from under sink.

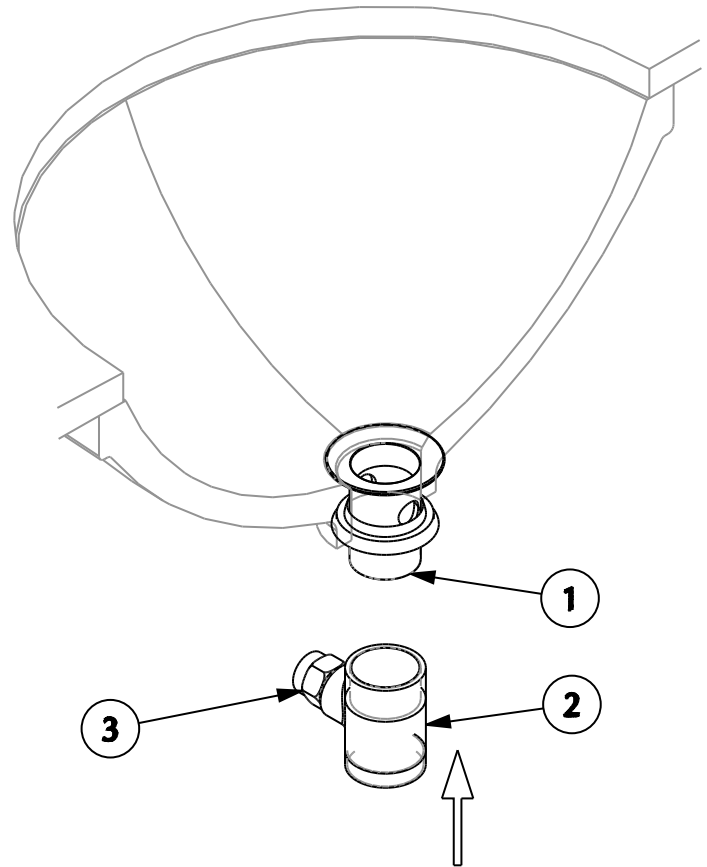
Pop-Up Waste Installation

11



1. Remove nut (3), tailpiece (4) and washer (2) from body (1).

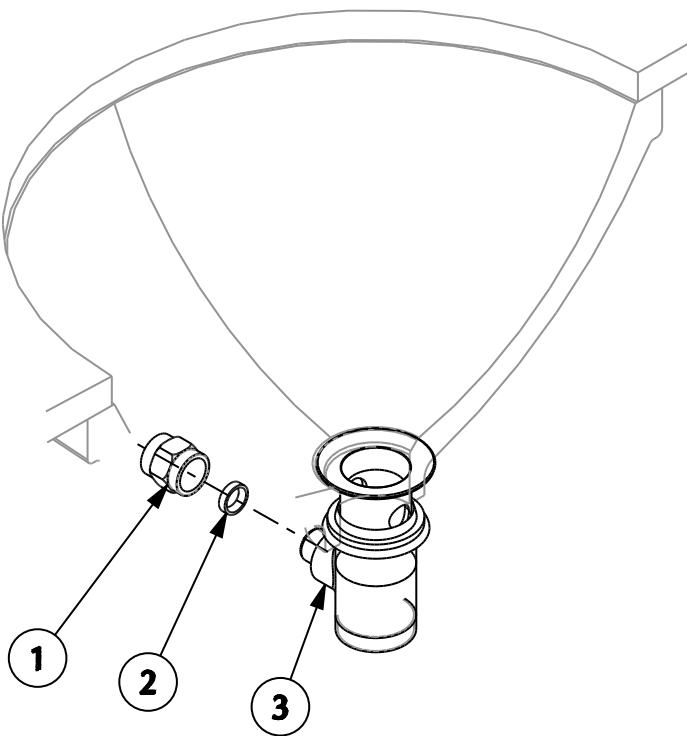
12



1. Mount body (2) onto drain flange (1) and thread on tightly, making sure that nut (3) is pointing back towards spout lift rod and is aligned with the spout assembly.

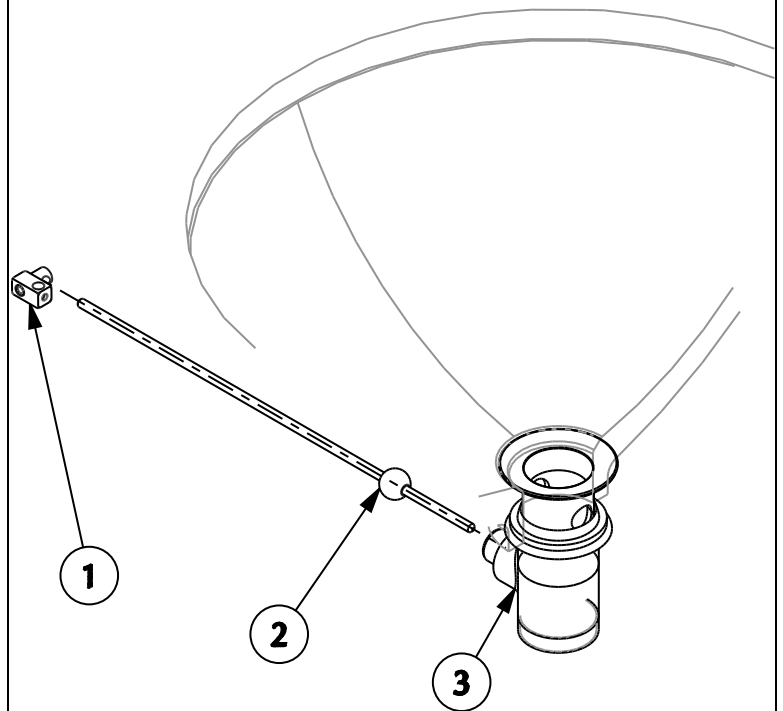
Pop-Up Waste Installation

13



1. Remove nut (1) and plastic bushing (2) from body (3).

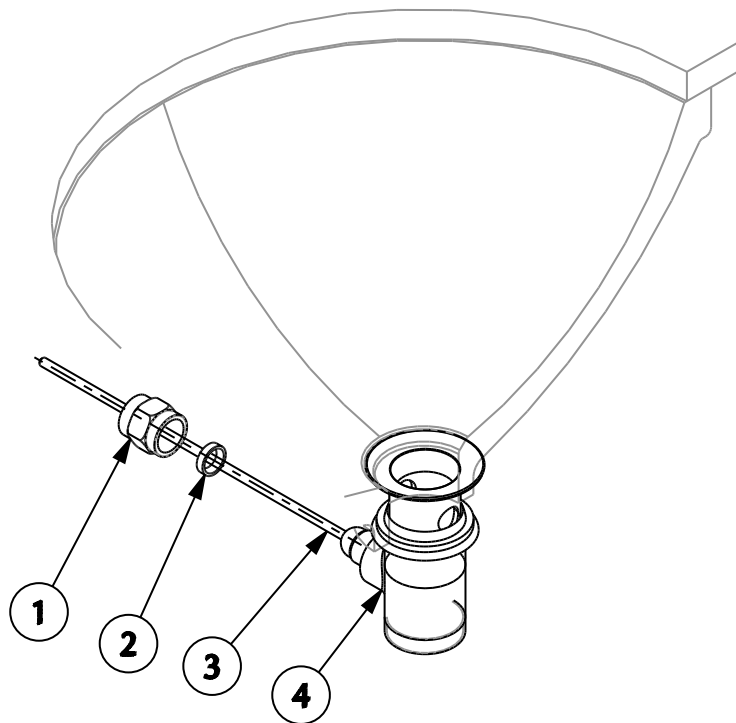
14



1. Remove coupler (1) from pivot arm (2).
2. Insert short end of pivot (2) into body (3)

Pop-Up Waste Installation

15

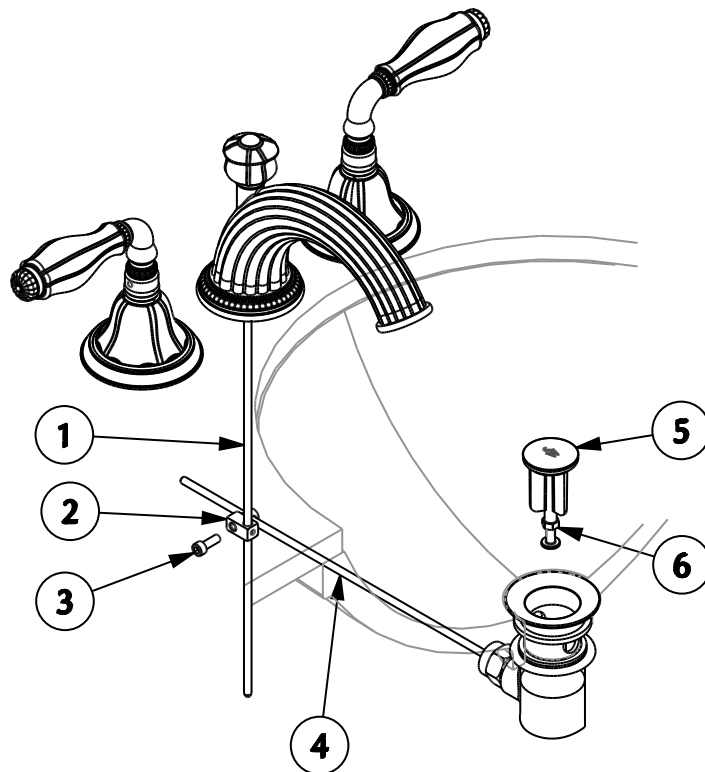


1. Slide plastic bushing (2) over long end of pivot arm (3), making sure that concave surface of plastic bushing (2) is against ball of pivot arm (3).

2. Mount nut (1) over pivot arm (3) and screw into body (4).

NOTE: DO NOT OVER TIGHTEN NUT (1).

16



1. Insert lift rod (1) through coupler (2).

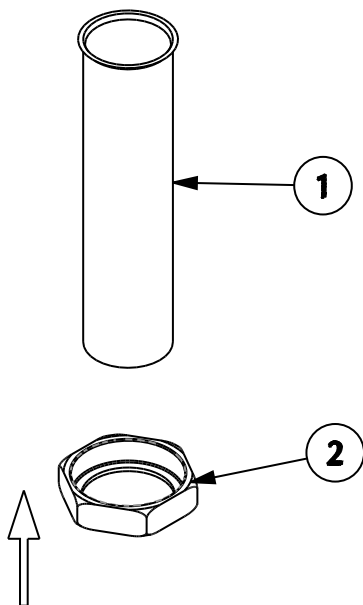
2. Insert stopper (5). Adjust stopper screw (6) as needed to allow for proper operation.

3. Push pivot arm (4) down to place stopper (5) in full open position. Check that lift rod (1) is in full down position.

4. Mount coupler (2) onto lift rod (1) and pivot arm (4) and secure with screw (3).

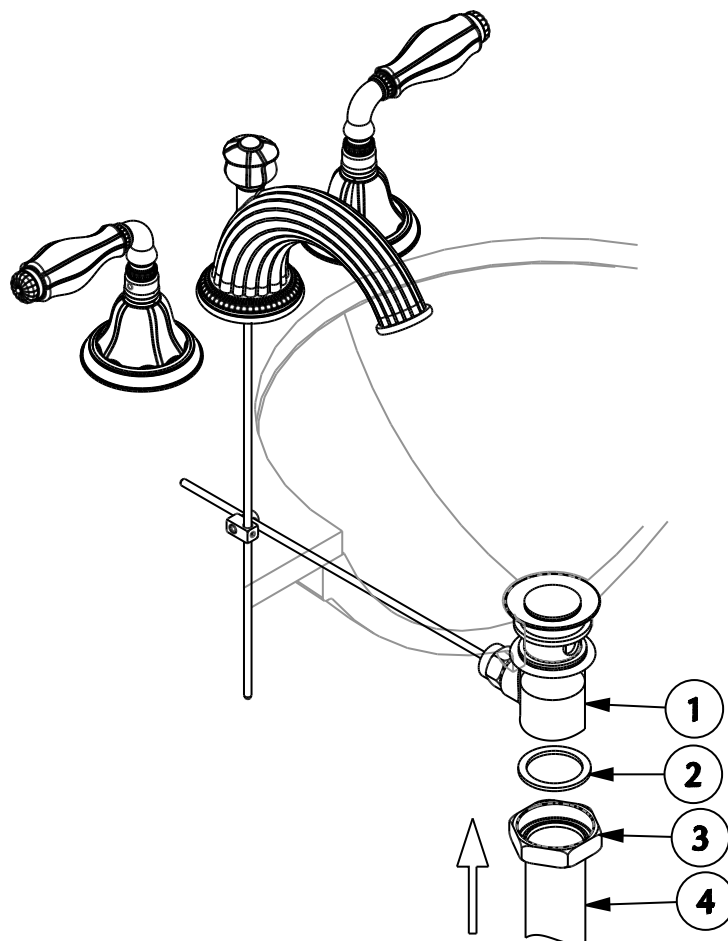
Pop-Up Waste Installation

17



1. If required, cut tailpiece (1) to desired length.
2. Mount tailpiece nut (2) over tailpiece (1).

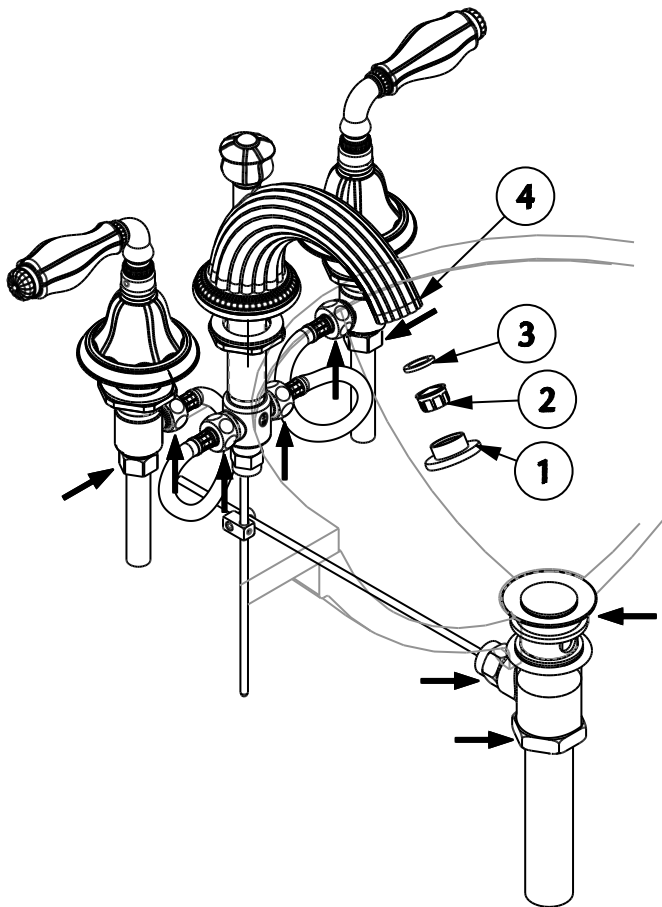
18



1. Insert tailpiece (4) into trap (not supplied).
2. Insert washer (2) into tailpiece nut (3) and thread tailpiece nut (3) onto body (1).

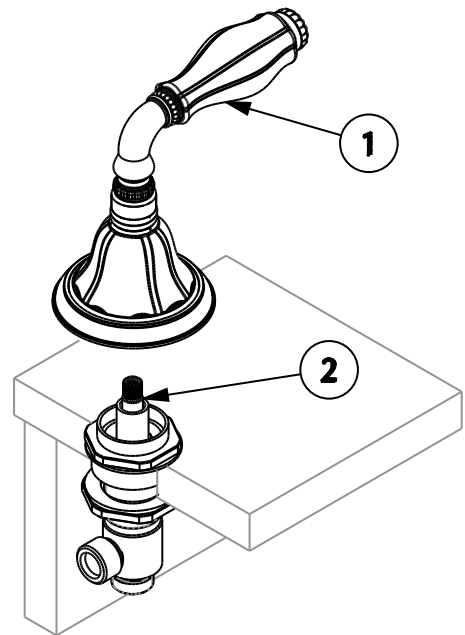
Flushing System

19



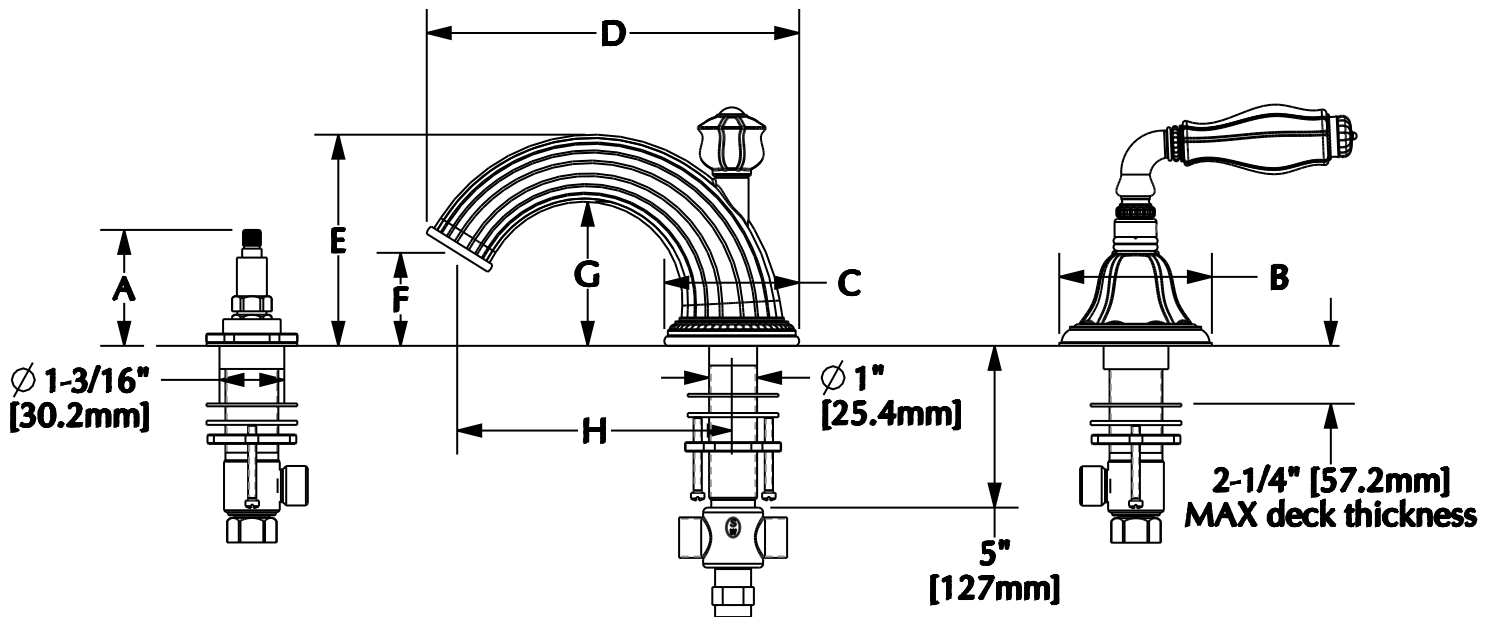
1. Remove aerator housing (1), aerator insert (2) and gasket (3) from spout tip (4).
2. Turn faucet handles to full open position and flush lines. Check all connections at arrows for leaks. Retighten connections if necessary.
3. Reinstall gasket (3), aerator insert (2) and housing (1).

Cartridge Replacement



1. Remove handle assembly (1).
2. Using 3/4" socket (not supplied), unthread cartridge (2) from body.
3. Using 3/4" socket, install new cartridge into valve body.

Lavatory Basin Set Dimensions



Handle Dimensions

Model No.	A	B
0907	2" [50.8mm]	2-1/2" [63.5mm]
0910	2-3/8" [60.3mm]	2-3/4" [69.9mm]
0912	2-5/8" [66.7mm]	2-7/8" [73mm]
0913	2-3/8" [60.3mm]	2-7/8" [73mm]
0914	2-1/4" [57.2mm]	3-1/4" [82.6mm]
0915	2-5/8" [66.7mm]	2-3/4" [69.9mm]
0916	1-3/4" [44.5mm]	2-1/4" [57.2mm]
0917	2-5/8" [66.7mm]	2-3/4" [69.9mm]
0918	2-5/8" [66.7mm]	2-3/4" [69.9mm]
0919	2-5/8" [66.7mm]	2-3/4" [69.9mm]
0920	2-5/8" [66.7mm]	2-3/4" [69.9mm]
0921	2-5/8" [66.7mm]	2-3/4" [69.9mm]
0923	2-3/8" [60.3mm]	2-7/8" [73mm]
0931	2-3/8" [60.3mm]	2-3/4" [69.9mm]
0932	2-3/8" [60.3mm]	2-3/4" [69.9mm]
0933	2-1/4" [57.2mm]	2-3/4" [69.9mm]
0934	2-3/8" [60.3mm]	2-5/8" [66.7mm]
0980	2-3/8" [60.3mm]	2-7/8" [73mm]
0981	2-3/8" [60.3mm]	2-7/8" [73mm]
0990	2-3/4" [69.9mm]	2-7/8" [73mm]
0991	2-3/4" [69.9mm]	2-7/8" [73mm]
0992	2-3/4" [69.9mm]	2-7/8" [73mm]
0993	2-3/4" [69.9mm]	2-7/8" [73mm]

Spout Dimensions

Model No.	Description	C	D	E*	F	G	H*
0801BSN	Apollo	1-3/4" [44.5mm]	7-1/2" [109.5mm]	2-1/2" [63.5mm]	1" [25.4mm]	1-3/8" [34.9mm]	6" [152.4mm]
0802BSN	Nouveau	1-3/4" [44.5mm]	7-3/4" [196.9mm]	3-3/4" [95.3mm]	1-1/8" [28.6mm]	1-3/8" [34.9mm]	6" [152.4mm]
0803BSN	Pyramid	2-1/2" [63.5mm]	7-1/2" [109.5mm]	3-3/4" [95.3mm]	2" [50.8mm]	2" [50.8mm]	6" [152.4mm]
0813BSN	Smooth Classic	3" [76.2mm]	7-1/2" [109.5mm]	4-1/2" [114.3mm]	1-1/2" [38.1mm]	3" [76.2mm]	6" [152.4mm]
0814BSN	Contemporary	2-3/4" [69.9mm]	7" [177.8mm]	5" [127mm]	1-3/4" [44.5mm]	3-3/4" [95.3mm]	6" [152.4mm]
0815BSN	Shell	2" [50.8mm]	7-3/8" [187.3mm]	2-1/2" [63.5mm]	3/4" [19.1mm]	2-1/4" [57.2mm]	5-1/2" [139.7mm]
0816BSN	Dolphin	2" [50.8mm]	6-1/2" [165.1mm]	4" [101.6mm]	1-3/4" [44.5mm]	2-1/4" [57.2mm]	4-1/2" [114.3mm]
0818BSN	Ribbon & Reed	2-3/4" [69.9mm]	8-3/4" [222.3mm]	3-1/4" [82.6mm]	1-1/2" [38.1mm]	1-3/4" [44.5mm]	6" [152.4mm]
0819BSN	Acanthus	2-3/8" [60.3mm]	7" [177.8mm]	3" [76.2mm]	1-1/2" [38.1mm]	1-3/4" [44.5mm]	5" [127mm]
0820BSN	Swan	2" [50.8mm]	6-1/2" [165.1mm]	5-1/4" [133.4mm]	1-3/4" [44.5mm]	N/A	5" [127mm]
0821BSN	Classic Textured	3" [76.2mm]	7-1/2" [109.5mm]	4-1/2" [114.3mm]	1-1/2" [38.1mm]	3" [76.2mm]	6" [152.4mm]
0822BSN	Louis Seize	3" [76.2mm]	7-1/2" [109.5mm]	4-1/2" [114.3mm]	1-1/2" [38.1mm]	3" [76.2mm]	6" [152.4mm]
0823BSN	Filigree	3" [76.2mm]	8" [203.2mm]	4-1/2" [114.3mm]	2-1/2" [63.5mm]	3-1/2" [88.9mm]	6" [152.4mm]
0824BSN	Harrison	3" [76.2mm]	8" [203.2mm]	4-1/2" [114.3mm]	2-1/2" [63.5mm]	3-1/2" [88.9mm]	6" [152.4mm]
0825BSN	Grey	2-3/4" [69.9mm]	8-1/2" [215.9mm]	4-1/2" [114.3mm]	1-1/2" [38.1mm]	2-3/8" [60.3mm]	6-1/2" [165.1mm]

E - INDICATES HIGHEST POINT
H - CENTER OF INLET TO CENTER OF OUTLET

* INCLUDES ALL PORCELAIN TRIM
** INCLUDES ALL ONYX, ROSE QUARTZ, ROCK CRYSTAL AND AMETHYST
*** INCLUDES MALACHITE, TIGER EYE, LAPIS LAZULI AND RHODOCHROSITE

Lavatory Basin Set Parts List

Part List

Item	Part Number	Description
1	14272	Set Screw Kit
2	EXT-KIT-DKMT	Deckmount Extension Kit
3	CART-1/2-RH	Cartridge - Hot
	CART-1/2-LH	Cartridge - Cold
4	15254	Top Mounting Kit
5	10583	End Valve Mounting Kit
6	11477	Tee Nut
7	11476	Fiber Washer
8	11536	Rubber Gasket
9	10126	Inlet Tee
10	11537	Rubber Gasket
11	10720	Spout Mounting Kit
12	Various**	Aerator Assembly
13	11500	Hose </td
14	WSTE-STND*	Pop-Up Assembly
15	13128	Complete End Valve Mounting Kit
16	14720	Tee Fitting Kit

* SPECIFY FINISH WHEN ORDERING
 ** CONTACT SHERLE WAGNER SALES REPRESENTATIVE

