

# FPL Hotel Towel Rack

— *Installation Instructions* —



Polished Stainless Steel

*Part #: 793936961452*



Brushed Stainless Steel

*Part #: 793936961445*

## Parts Guide

A. Towel bar 1

B. Towel bar 2

C. Towel bar 3

D. Plates (2)

E. Screw cover buttons (4)

F. Brass washers (4)

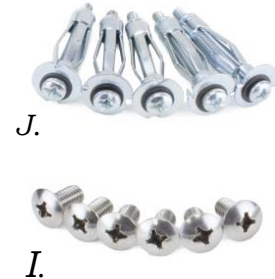
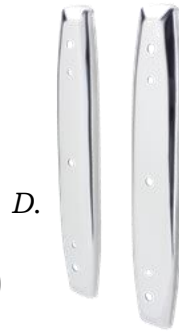
G. Silver washers (6)

H. Stainless steel anchor screws (4)

I. Truss head screws (6)

J. Anchors (5)

K. Wood screws (4)



Please refer to the Parts Guide during assembly to ensure you are using the correct parts.

## Required Tools

#2 Phillips screw driver

#3 Phillips screw driver

Drill

5/16<sup>th</sup> Inch drill bit

#2 Phillips driver bit

Hammer

Tape measure

Level

Pencil

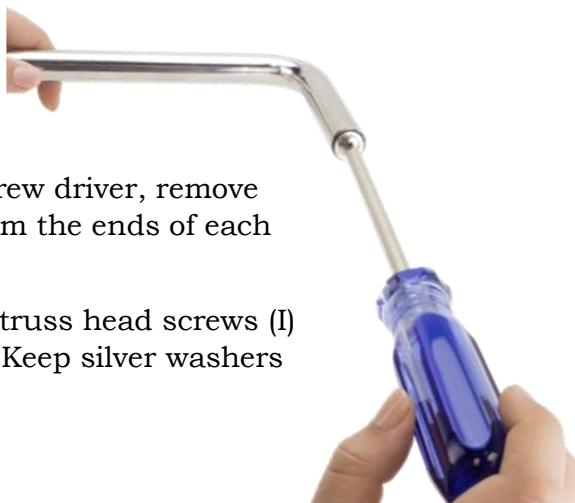
Push pins or tape



### Step 1.

Using your #3 Phillips screw driver, remove the truss head screws from the ends of each towel bar.

You will have a total of 6 truss head screws (I) and 6 silver washers (G). Keep silver washers on truss head screws.



### Step 2.

Starting with the *towel bar #1 (A)*, align with designated holes on the plates (D).

Now, insert truss head machine screw with silver washers through the **rear** of the plate (D) through designated hole, meeting the towel bar #1 (D) on the other side.

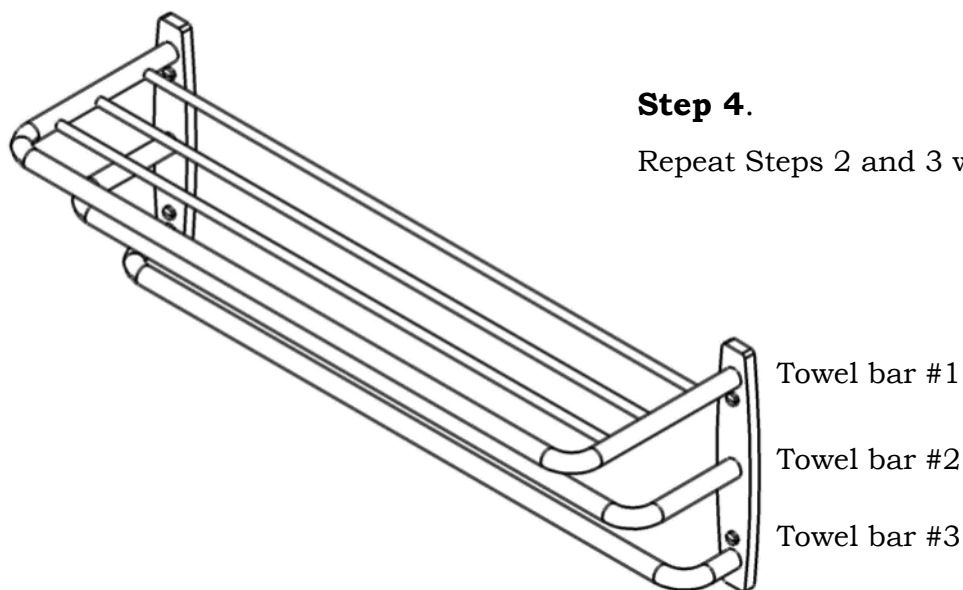
### Step 3.

Using your #3 Phillips screw driver, tighten truss head screw (I).



### Step 4.

Repeat Steps 2 and 3 with towel bar #2 and #3.



*Refer to diagram for proper towel bar placement.*

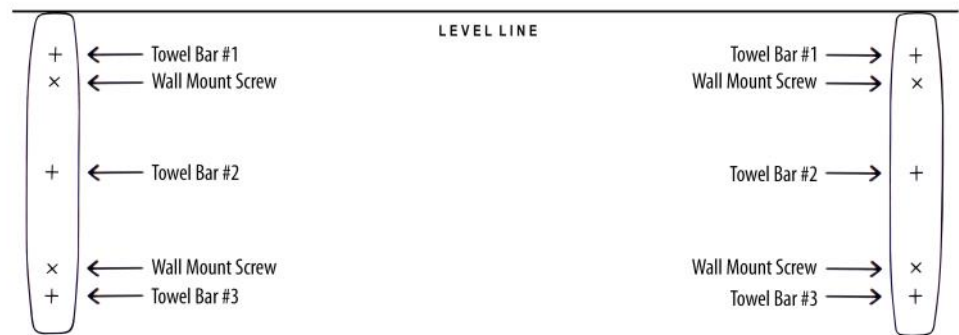


*Adjust accordingly.*



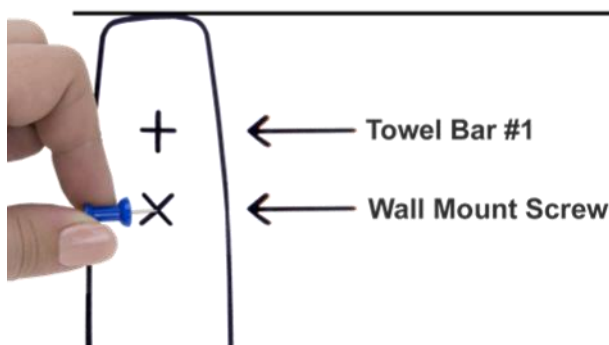
## Step 5.

Ensuring you are aligned and level, please use the diagram on the provided template.



## Step 6.

Securely hang the template provided on the wall where the product will be placed. Use "Level Line" to ensure template is level. Mark screw placements with a push pin through designated "X" on mounting template. Now remove template once marks have been made.



## Step 7.

Once you have found the desired towel rack placement, determine which type of hardware fasteners will be needed for each towel rack plate. *Install anchors for drywall mounting first.*

Anchors (J) are provided for mounting to dry wall and the wood screws (K) are provided for mounting to wall studs.

---

### Dry Wall Mounting



Anchors (J)

Collect the number of anchors needed. Using your 5/16<sup>th</sup> inch drill bit, drill a hole for each anchor needed.



Keep screw within anchor. Use a hammer to lightly tap the anchor into hole until flush with wall. Use #2 screw driver to tighten until anchor screw is firm.



Remove the steel screw and black washer, and discard. Use stainless steel screw (H) to mount Hotel Towel Rack.

---

### Wall Stud Mounting



Wood screws (K)  
(points on end)

Anchor will not be needed for this plate, use the wood screws provided.

### Tip

---

*How to locate a wood stud if a stud finder tool is not available*

Knock on your wall - where the rack will be hung, side to side to find wooden stud. If there is no wooden stud, the knock will make a deep hollow sound. If there is a wooden stud behind the dry wall, your knocking will become solid and higher pitched. As you move side to side while knocking, the sound will either become more hollow as you move away from a wooden stud, or become more solid as you become closer to a wooden stud.



### Step 8.

Now slide a brass washer (F) on each mounting screw.

Place your Hotel Towel Rack on the prepared mounting location.

Use your #2 Philips screw driver/#2 Phillips driver bit to securely tighten the mounting screws into the anchor/wall studs.

Tighten until secure.



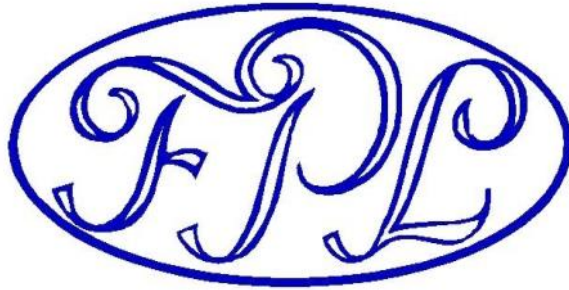
### Step 9.

Locate your 4 screw cover buttons, and screw them on to each exposed screw head for a clean finish.



Screw cover buttons

**Represented by:**



REV.12.21.17