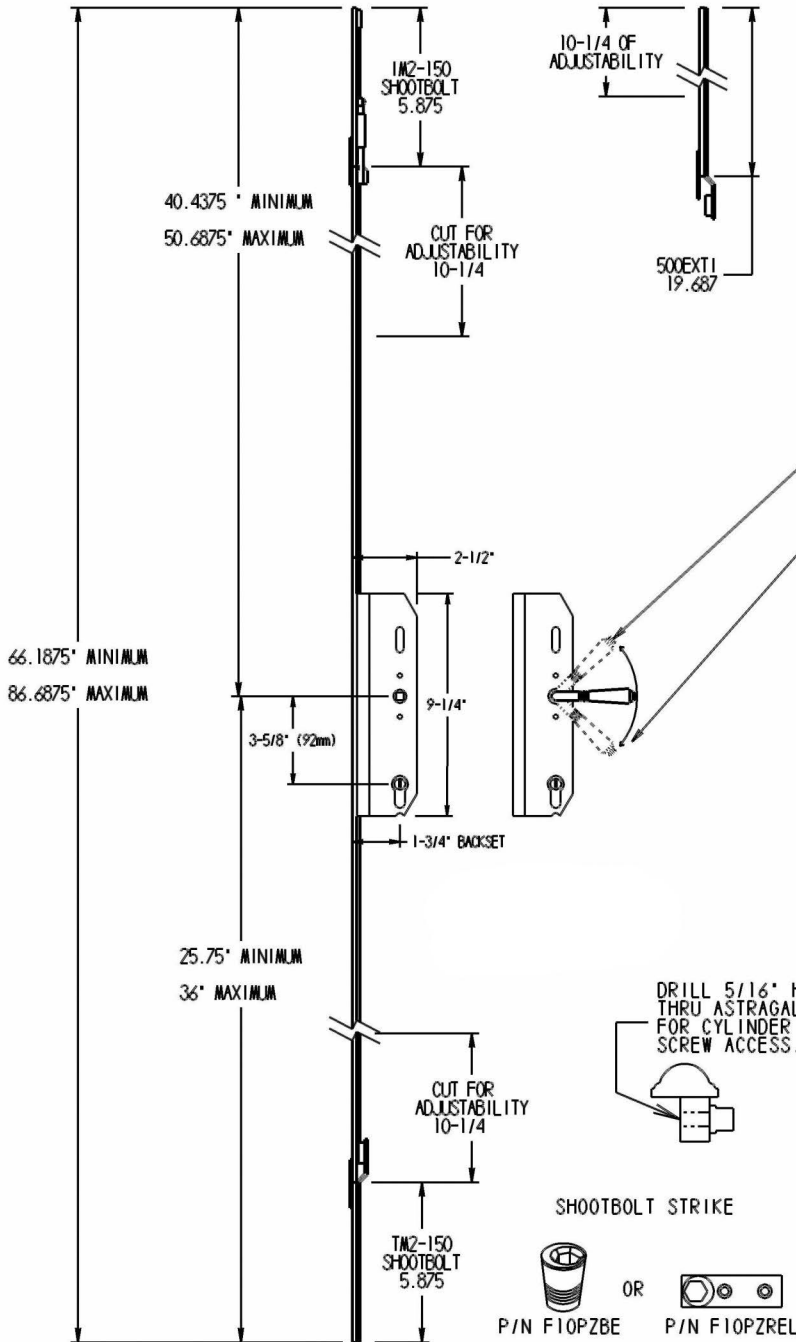


# #7002; 2-Point Inactive Entrance Mortise Mechanism Stainless Steel



\* ALL DADOE GROOVES MUST BE FREE OF ANY PARTICULATE OR SAWDUST BEFORE AND AFTER INSTALLATION.

\* Function:

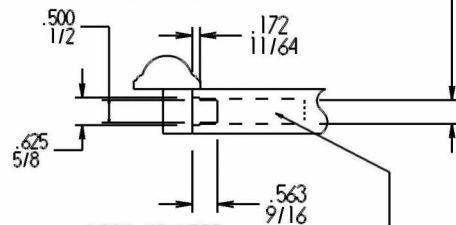
To lock:  
Lifting the lever up engages shootbolts.  
Turning the cylinder locks all points into place.

To Unlock:  
Turn the cylinder to unlock all points.  
Pushing the lever down will disengage shootbolts.

\*Minimum height door: 66.1875"  
Maximum height door: 86.6875"  
w/o add-ons.

FOR MECHANISM, CUT WIDTH .5625" (9/16") X 9-1/8" FOR LOCK BOX HOUSING

7002 GROOVE DETAIL



LOCK MOUNTED BEHIND 'T' ASTRAGAL.  
NOTE: 7002 2-POINT INACTIVE ENTRANCE MORTISE IS SLIGHTLY DEEPER FOR SHOOTBOLTS TO BE FLUSH WITH THE EDGE OF THE DOOR.