

A romantic wedding scene featuring a bride and groom embracing in a lush garden at sunset. The bride, on the left, is wearing a white lace gown and holding a large bouquet of pink and white roses. The groom, on the right, is in a white shirt and dark tie. They are standing on a grassy lawn with a large tree and foliage in the background. The warm, golden light of the setting sun creates a soft, romantic atmosphere with long shadows and a bokeh effect in the background.

A Perfect Day Awaits

*Weddings*  
at Peter Teakle Wines



# *Congratulations* on your Engagement

Every couple deserves a wedding celebration that truly reflects them. We want to create a truly magnificent day that will be remembered for the rest of your lives.







**A venue that will stand the test of time,  
ready for you to walk straight into.**

The pristine condition of our vineyards shows the great respect, care, and commitment we have for this property – and we have the same approach to every event and special occasion held with us. We look forward to creating a day that reflects your own history and future of love.



# Port Lincoln

and Peter Teakle Wines



**Port Lincoln is renowned for its beautiful coastal lifestyle set overlooking the welcoming bays of Boston, making it the ideal place to relax in and explore the Eyre Peninsula.**

Our team have experience creating itineraries for destination weddings, where your special day becomes a holiday for friends and family – taking in the world class seafood and experiences unique to this venue.



# Cellar Door

Set on the hill overlooking our beautiful vineyard with charming country-side surroundings, our wine barrel Cellar Door makes for a truly unique setting to take your vows.

Up to 70 Guests can view your ceremony from the Cellar Door decking, with additional viewing space available outside.







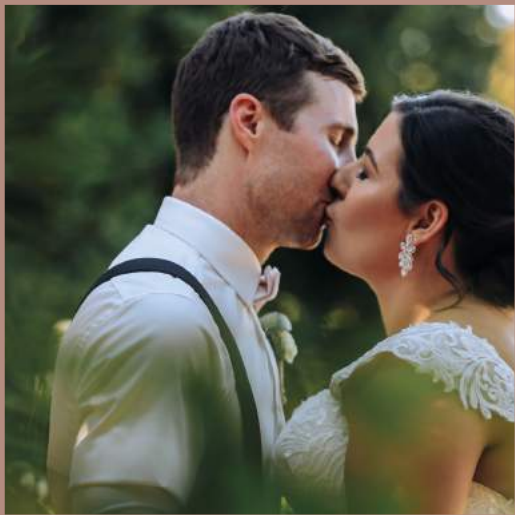
# The Wedding *Garden*

Our picturesque Wedding Garden is adorned with the most stunning flowers and sculptures and makes for a truly romantic backdrop for you and your significant other to say, 'I do'.



Nestled amongst lavender plants and cherry blossom trees, our Wedding Garden offers you and your guests' privacy in an intimate setting reminiscent of a garden in Tuscany or Provence. It's the ideal setting for you to begin your happily ever after.

There are several backdrops perfect for beautiful photographs. From garden water features, roses, and stone feature walls, through to lavender fields and rolling landscapes of manicured vineyards.







# *Line & Label*

## Restaurant

The Line & Label sources the freshest produce from the land and sea, highlighting local Eyre Peninsula producers on their menu.







Just like our wine, which is made from our site grown grapes, the menu at The Line & Label features much of our own 'home' grown produce. Executive chef Mark Jensen and team regularly forage in the vegetable garden and greenhouse for herbs and edible flowers, which make our dishes at The Line & Label Restaurant truly stand out. It's a paddock to plate experience.





# Wedding Packages



**Hold your ceremony and reception all in one place. Our venue is about being relaxed, open and enjoying those around you.**

## CEREMONY LOCATIONS

You can choose to have your Ceremony in our picturesque wedding garden or unique cellar door.



## WEDDING GARDEN

Up to 100 Guests

Includes 30 White Garden Chairs and Celebrants

Wine Barrel

\$1,000

Available for the ceremony only.



## CELLAR DOOR

Up to 70 Guests

\$2,000 (non-trading day), \$3,500 (trading day)

Available for the ceremony only.



## RECEPTION VENUE

The Line & Label Restaurant makes a stunning wedding reception venue. An architecturally stunning restaurant of stacked bluestone walls, a floor-to-ceiling double-sided open fireplace and glowing halo lighting.



## LINE & LABEL RESTAURANT

Seated 80 guests – Cocktail 150 guests

## LINE AND LABEL – ATRIUM

Seated 40 Guests – Cocktail 100 guests



## LINE AND LABEL & ATRIUM (EXCLUSIVE USE)

Seated 120 guests – Cocktail 250 guests



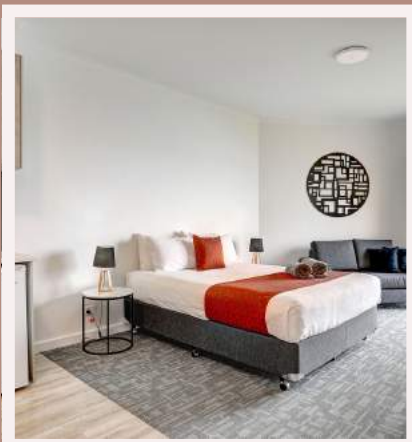




# Accommodation

**Our sister business, the Limani Motel, provides spacious accommodation with spectacular waterfront views of Boston Bay and Boston Island from every room.**

Located only 2km from the Line & Label, we are happy to assist with any group or individual accommodation requirements.







*Peter Teakle*  
WINES

 Line & Label

### WEDDING ENQUIRIES

**Phone** 08 8682 6635

**Email**

[restaurantmanager@thelineandlabel.com.au](mailto:restaurantmanager@thelineandlabel.com.au)

PETERTEAKLEWINES.COM