

HealthyAir® Source Capture Air Purification System

Single Station - Outside Exhaust

Model HA-SCP-G4/G5/G6



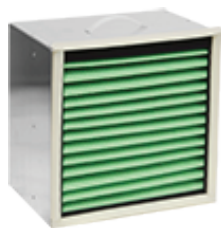
Patented eHEPA® Filtration Technology

(Electrostatic enhanced HEPA technology)

- Pre-Filter: Screens large particles, dust and debris
- H13 HEPA Filter: Collects aerosol and ultra-fine particulate
- Activated Carbon Filter: Adsorbs VOCs, chemicals and odors
- 10 kV Electrostatic Field: Deactivates microorganisms

System Features

- Meets International Mechanical Code (IMC) ventilation requirement
- Position Hood 6"-12" from source to capture contaminants
- 4" dia. Outlet Port to vent exhaust via connection to 4" dia. duct
- Self-supporting 4'L Extraction Hose (custom length available)
- Option of Rectangular or Circular Hood
- Optional LED light may be added to Hood to illuminate work area
- 3 Fan Speeds
- Portable unit with (4) heavy-duty caster wheels
- Remote control operation
- Low-maintenance, simple to replace Integrated Filter Module



Specifications

Fan Speed	Low	Med	High
Total Airflow (cfm)	105	120	156
Amperage	2.75 A		
Voltage/Power	120 V/ 60 Hz / 200 W		
Base Dimensions	14" L x 12" W x 24" H		
Hose Dimensions	4' L, 2.5" Ø (Custom length available)		
Hood Dimensions	6"x3.5" Rect., 4.5" Ø Circ.		
Weight	45 Lbs.		
Filter Model No.	HA-IFM-1111		