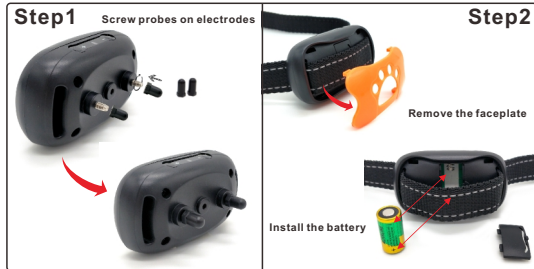


# PET681V Vibration Anti Bark Collar User Manual Product Manual

**Please Read this Manual Carefully before Using**

Thank you for purchasing the anti bark collar



1

**Safety warning** - please read before using:  
Do not leave collar on dog for more than 6-10 hours to avoid pressure necrosis due to the probes touching the skin.  
Do not put on dog when dog is sleeping, laying or unattended.

Make sure probes are a finger width apart from dog's neck (stick your finger between dog's neck and the probes to test)

### Important Note:

When the collar is fitted correctly, IT DOES NOT MOVE. You can slide just one finger under the collar.  
If it is NOT FITTED CORRECTLY, it will go off randomly and will not work when your dog barks.

### Introduction:

The anti-bark collar stops barking with progressively increasing sound and vibration which is controlled by a microprocessor distinguishing your dog's bark from other environmental noises and automatically delivers sound and vibration after each bark.

### PRINCIPLES OF OPERATION:

Anti bark collar has 7 correction levels, which deliver different sound and vibration combinations:

2

1st bark: Progressive warning beeps for 1.5 seconds  
2nd bark: Progressive warning beeps for 2.5 seconds  
3rd bark: Sound for 4 seconds+Vibration for 0.5 seconds  
4th bark: Sound for 4 seconds+Vibration for 1 seconds  
5th bark: Sound for 4 seconds+Vibration for 1.5 seconds  
6th bark: Sound for 4 seconds+Vibration for 2 seconds  
7th bark: Sound for 4 seconds+Vibration for 2.5 seconds  
8th bark: Sleep Mode for Safety (for 1 minute)

There are total 7 sensitivity levels. The 4th level is set automatically after installing the battery.

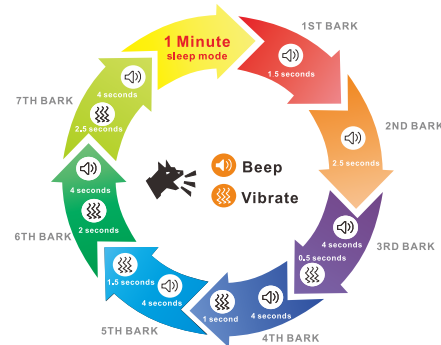
**DO NOT PUT THE COLLAR ON YOUR DOG WITHOUT FIRST TESTING IT UNDER ANY CIRCUMSTANCES.**

Make sure you have a good battery before testing.

### Operating Instructions:

Our PET681V is almost completely automatic. Just install a 6 volt alkaline battery, adjust the strap to the size of your dog's neck and the PET681V automatically begins doing its job.

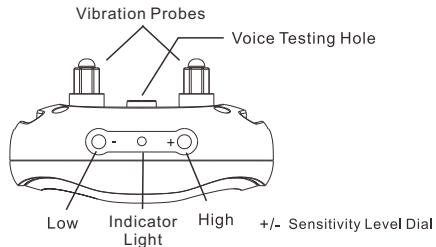
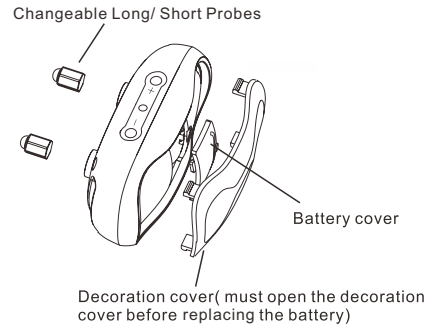
3



### 1. BATTERY INSTALLATION:

1. Remove the decorative cover.
2. Pull the strap loose.
3. Remove the battery cover.
4. Insert the battery (6 volts) between the "clip"[positive End(+)] and "spring"[negative(-)] contacts. The collar will be automatically set to the 4th sensitivity level (total 7 sensitivity levels).

4



## 2. TESTING THE COLLAR BEFORE USING

Take the collar in your hands facing the back side of the collar and gently blow a small puff of air towards the small hole located between the 2 vibration probes (see below illustration), you will hear a beep.

Blow a puff of air again, you will hear the second beep.

Blow for the third time and you will hear a beep and feel a mild vibration (similar to the cell phone vibration). You may continue to do this till the 7th correction level is reached.

## 3. ADJUSTING THE SENSITIVITY

There are two BUTTONS + - used to adjust the sensitivity, and every time there will be "B" out of tone, sensitivity will gradually be enhanced or weakened. The higher sensitivity level is, the easier to trigger the collar.

## 4. PUTTING COLLAR ON YOUR DOG



✓ Ensure that no more than one finger can pass through.

Put the collar around your dog's neck and adjust the length of the collar using the slide buckle arrangement. Collar should fit snugly underneath your dog's neck.

**CORRECT FIT:** Collar is not moving and you can slide JUST ONE finger under the collar or strap.

**INCORRECT FIT:** Collar is moving and you can slide TWO fingers under the collar or strap. Then the collar will go off randomly and is not working correctly when your dog is barking.

Make sure the vibration probes are in the direct contact with your dog's skin. Hair between the probes and skin will diminish the effect of the vibration. If necessary, it is advisable to clip or shave dog's fur under the neck to ensure the direct contact.

### Caution Notes:

1. Before putting the collar on your dog, make sure you screw the rounded probes on the vibration electrodes! Use the mini spanner to screw/ unscrew them.
2. KEEP OUT OF THE REACH OF CHILDREN.
3. Do not allow your dog to chew this collar. You should also attempt to minimize scratching or clawing at the casing.

4. This device is made of plastic and electronic components that are not digestible. Consult your local vet if your dog swallows any parts of this product.

5. The collar is not intended to be used as a restraining collar. If you are using a leash, use it with a separate restraining type of collar.

6. Check your pet's neck for any signs of rash or sore daily. If you observe a rash or a sore, please remove the collar for a few days.

7. This is normal but, it should not happen so often as to be confusing to your pet. Please don't use the collar if your pet is suffering from fleas or ear mites. Constant scratching from fleas or ear mites can, at times, cause the collar to react when it is not supposed to. If these activities are evident, have your pet checked by a veterinarian for parasites.

Although the Anti-bark Collar's microprocessor is designed to differentiate your dog's individual bark from stray environmental noises, the unit may occasionally be activated by other vibrations or sounds.

### Fault Finding Guide:

Q. The collar just keeps going off.  
A1. The sensitivity is set too high. Please lower the sensitivity by pressing the minus "-" button.  
A2. The collar is not tight enough, please tighten the collar.

Q. My dog shakes his head and the collar goes off.  
A. Because dog feels so uncomfortable when wearing the collar that he/ she shakes the head and scratches the collar to activate it.

Q. My dog barks but the collar is not activated.  
A. Check the battery by performing a full test. If the collar tests correctly, then you will need to either increase the sensitivity level by pressing "+" to make it easier to be activated, or tighten the collar as it might be too loose.

Q. Collar beeps but doesn't vibrate.  
A. There is not enough current inside the battery to make it vibrate, please change a new battery.

Q. The collar goes off when my dog doesn't bark.  
A. The collar sometimes gives false alerts... Don't worry about this, your dog learns very quickly that it is exactly a false alert. All dogs learn quickly that the two beeps are just two beeps when they are barking. But as a responsible dog owner, you know that the collar is designed to STOP the excessive barking.

# sparklypets

## HANDS-FREE LEASH + ROPE LEASH



HANDS-FREE LEASH

### HANDS-FREE LEASH FOR TWO DOGS



PREMIUM HANDS-FREE LEASH

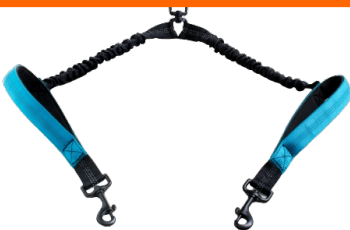


ROPE LEASH



ROPE LEASH FOR TWO DOGS

### TWO DOGS BUNGEE EXTENSION



TWO DOGS ADJUSTABLE BUNGEE EXTENSION



### DOUBLE HANDLE LEASH



SUBSCRIBE TO OUR NEWSLETTER AND GET A **10%** DISCOUNT COUPON ON YOUR NEXT SPARKLYPETS ORDER.

[WWW.SPARKLYPETS.COM](http://WWW.SPARKLYPETS.COM)



# sparklypets

## BARK COLLARS



2 PACK BARK COLLARS NO SHOCK  
(BATTERY VERSION)



2 PACK BARK COLLARS NO SHOCK  
(RECHARGEABLE VERSION)



RECHARGEABLE BARK COLLAR  
WITH SHOCK Q9



RECHARGEABLE BARK COLLAR  
NO SHOCK V1



SUBSCRIBE TO OUR NEWSLETTER AND GET A **10%** DISCOUNT COUPON ON YOUR NEXT SPARKLYPETS ORDER.

[WWW.SPARKLYPETS.COM](http://WWW.SPARKLYPETS.COM)

