



HANDS FREE LEASH for medium & large dogs

MODEL NO. HL41D2

WWW.SPARKLYPETS.COM

PRODUCT COMPONENTS



- 1 WAISTBAND WITH FANNY PACK
2 MAIN BUNGEE LEASH

WARRANTY

Because we stand by our products, our product is covered by a 3 years warranty per product, starting from the day it was purchased.

WARNING

Failure to follow these instructions could result in serious injury for you and your dog.

For any support, inquiries, or improvements, please write to us or call us: info@sparklypets.com | +1(252) 220-0094



Dear dog lover,

First of all, thank you for choosing us and for trusting us for your furry buddy.

My name is Christian, I'm the founder of SparklyPets, and this Hands-Free Leash you just received is one of our initial and most dedicated hard-worked products of all time.

I'm happy to say that it all started when my wife and I decided that it's time to include Sparkly (of course...), our dog, on our mountain trails, and noticed that the products at that moment on the market, weren't suited for our needs.

So, that was the moment when we thought we need to develop a hands-free leash that can fit even the most active of dogs, such as our Sparkly.

It all started with some simple drawings and some home-made stitches, till the quality product you got today.

We're proud to say that all of the work was based on our needs and the ongoing feedback we receive from our customers.

I hope the next steps will ease the usage of your new SparklyPets Hands-Free leash so that you can enjoy your walks, hikes, or even joggings with your pal.

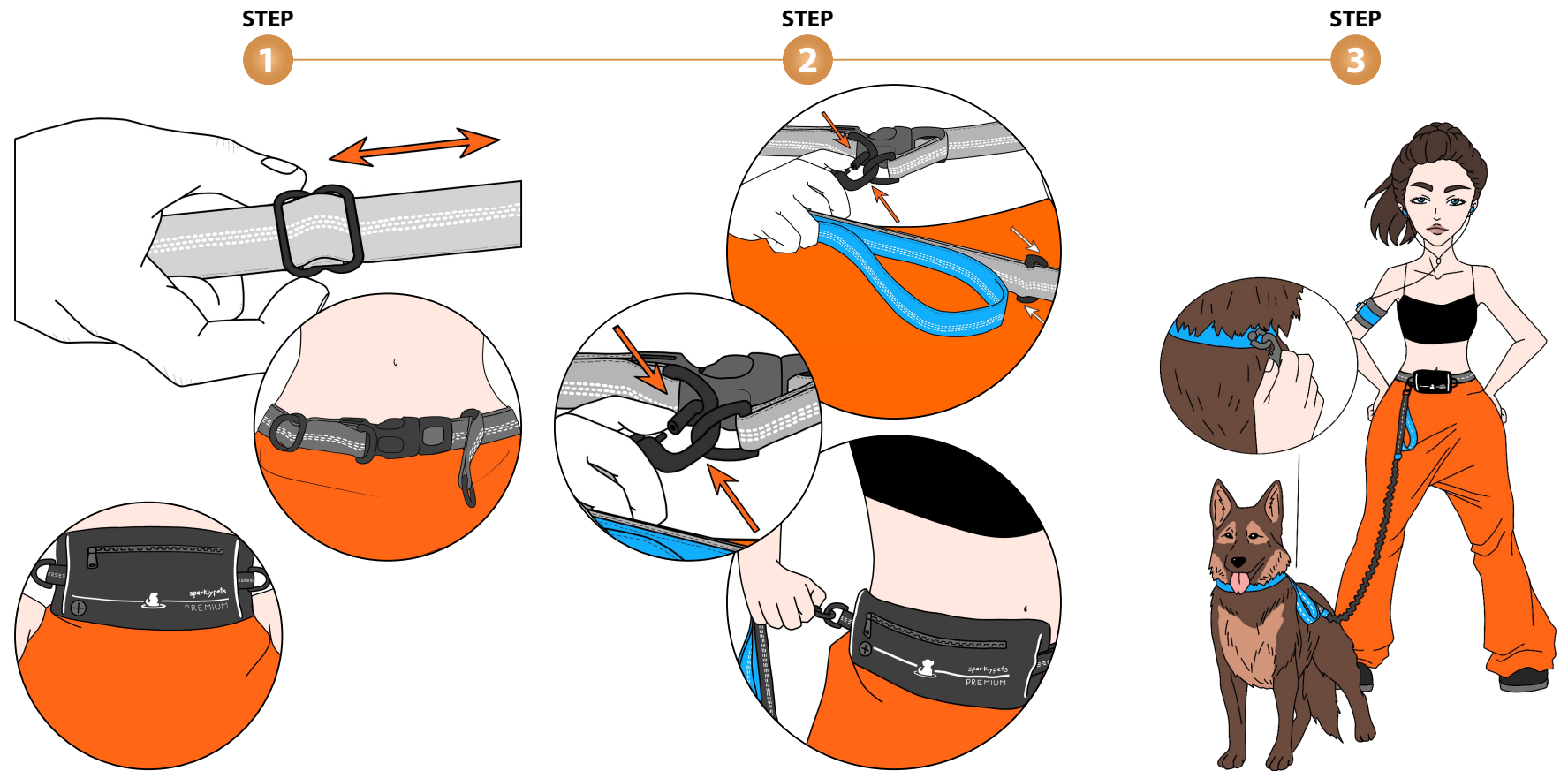
Thanks again for choosing us, and know that from now on you can consider me your friend.

Yours sincerely,

Christian from SparklyPets



STEP BY STEP PROCESS ON HOW TO USE YOUR NEW SPARKLYPETS PREMIUM LEASH!



EN ES FR

EN • Slide the metal Tri-Glides Buckles from each side of the waistband and adjust them according to your waist. Now buckle the belt in front. Note: For easy setting, the two clasps in front of the buckle must remain outside and the fanny pack at your back.

ES • Deslice las hebillas metálicas de triple ajuste de cada lado de la cintura y ajústelas a su cintura. Ahora abroche la correa por delante. Nota: Para facilitar el ajuste, los dos cierres de la parte frontal de la hebilla deben quedar fuera y la riñonera a su espalda.

FR • Faire glisser les boucles métalliques à triple réglage de chaque côté de la ceinture et ajustez-les à votre taille. Maintenant, boucler la laisse à l'avant. Note: Pour faciliter le réglage, les deux attaches à l'avant de la boucle doivent se trouver à l'extérieur et le sac banane sur votre dos.

EN • Grab the Main Bungee Leash, from the part with the metal D-Ring next to the handle. And clip the metal hook either by the two rings in front of the plastic buckle or by one of the D-Rings positioned on each side of the fanny pack.

ES • Agarre la correa elástica principal desde la parte del aro metálico en forma de D que está al lado del asa y enganche el gancho metálico por las dos anillas que hay en la parte frontal de la hebilla de plástico o por una de las anillas en forma de D situadas a cada lado de la riñonera.

FR • Tenir la laisse élastique principale par l'extrémité présentant une attache métallique en D à côté de la poignée et accrochez le crochet métallique dans les deux anneaux situés à l'avant de la boucle en plastique ou dans l'un des anneaux en D de chaque côté du sac banane.

EN • Now, grab the other end of the Main Bungee Leash and clip the metal hook by your dog's collar.

ES • Ahora, agarre el otro extremo de la correa elástica principal y enganche el gancho de metal por el collar de su perro.

FR • Maintenant, saisissez l'autre extrémité de la laisse élastique principale et accrochez le crochet métallique dans le collier de votre chien.

THE NEW SPARKLYPETS PREMIUM LEASH WITH MORE ENHANCED FEATURES!

HANDS - FREE OR HANDS ON



EN ES FR

EN • FROM HANDS-FREE TO HANDS-ON LEASH VERSION

Unhook the Main Bungee Leash from the waistband, now rip open the velcro from the handle, twist the handle like in the picture so that you may hook the D-Ring, now grab the padded handle.

ES • DE MODO MANOS LIBRES A MODO MANUAL

Desenganche la correa elástica principal de la pretina, abra el velcro del asa, gire el asa tal como se muestra en la imagen para poder enganchar el aro en forma de D y agarre el asa acolchada.

FR • PASSER DE LA VERSION MAIN-LIBRES À LA VERSION STANDARD

Décrocher la laisse élastique principale de la taille, détacher ensuite le velcro de la poignée, tourner la poignée en suivant le sens indiqué sur l'image afin de pouvoir attacher l'anneau en D, puis attraper la poignée rembourrée.

EXTRA TRAFFIC HANDLE



EN • PADDED TRAFFIC HANDLE

Grab the padded traffic handle to keep your dog in control and close to you.

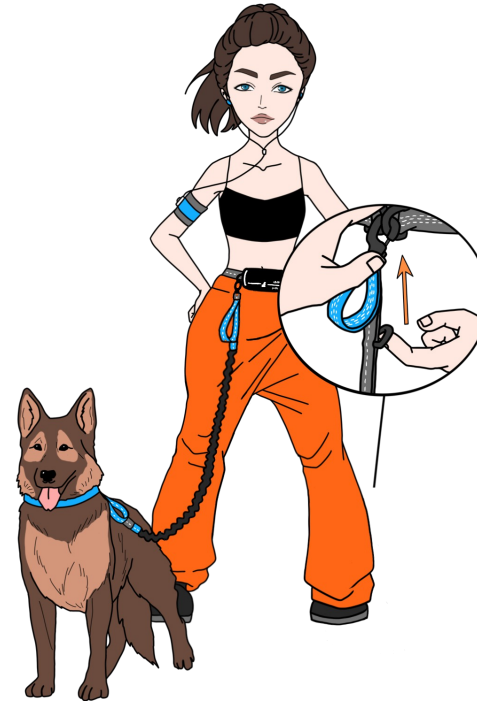
ES • ASA ACOLCHADA PARA LUGARES CONGESTIONADOS

Agarre el asa extra acolchada para mantener a su perro bajo control y cerca de usted.

FR • POIGNÉE REMBOURRÉE POUR LES ENDROITS ENCOMBRÉS

Saisir la poignée rembourrée supplémentaire pour garder votre chien sous contrôle et près de vous.

ADJUSTABLE SIZE



EN • ADJUSTING THE MAIN BUNGEE LEASH, SHORTER VERSION

Grab the D-Ring from the Main Bungee Leash and hook it together with the two front rings or by one of the fanny packs D-rings. Now you have a shorter version of the hands-free leash.

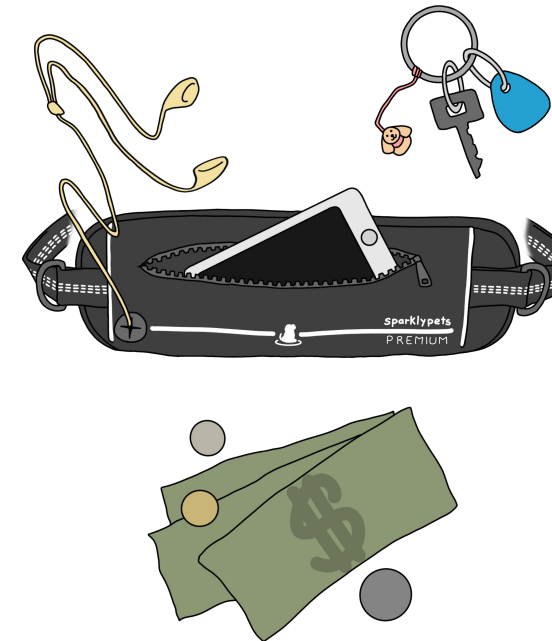
ES • AJUSTE DE LA CORREA ELÁSTICA PRINCIPAL, VERSIÓN MÁS CORTA

Agarre el aro en forma de D de la correa elástica principal y engánchelo a las dos anillas delanteras o por una de las anillas en forma de D de la riñonera. Ahora tiene una versión más corta de la correa manos libres.

FR • RÉGLER LA LAISSE ÉLASTIQUE PRINCIPALE, VERSION COURTE

Attraper l'anneau en D de la laisse élastique principale, et l'accrocher aux deux anneaux de devant ou à l'un des anneaux en D du sac banane.

FANNY PACK FOR UNIVERSAL USAGE



EN • FANNY PACK FOR UNIVERSAL USAGE

Use it to carry your stuff. Store your cell phone or keys while you're going for a walk.

ES • RIÑONERA DE USO UNIVERSAL

Utilízela para llevar lo que quiera. Guarde su móvil o sus llaves mientras da un paseo.

FR • SAC BANANE UNIVERSEL

Utilisez-le pour transporter tout ce que vous voulez. Rangez votre téléphone portable ou vos clés pendant que vous vous promenez.

sparklypets

BONUS TIPS

HOW TO TRAIN your dog to fetch his new SPARKLYPETS LEASH

STEP 1



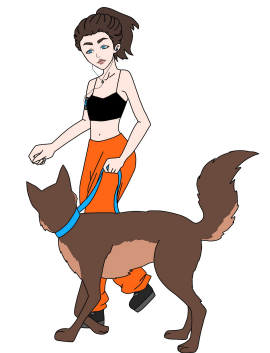
Show your dog his new SparklyPets Leash and teach him the word **leash** by saying it each time you put it on him. Teach your dog to 'fetch his leash' by using the same practices as with a simple 'fetch' trick.

STEP 2



Put the leash in a spot, and make sure it is accessible to your dog. Encourage your dog to **'go and get your leash'** and reward him each time he succeeds. If your dog has trouble getting the leash, be sure to help him out a bit.

STEP 3



Reward your dog with a treat and by taking him for a walk. The next time you go for a walk, ask your dog to fetch his leash for you!



For more free training tips follow this link:

WWW.SPARKLYPETS.COM/BONUS

