

# Economical Saladette with Static Cooling



ESL3831



ESL3832



ESL3852



ESL3864

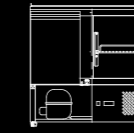
2 YEARS WARRANTY ON ALL PARTS AND LABOUR  
EXTRA 2 YEARS WARRANTY ON PARTS WHEN YOU REGISTER WITH US ONLINE



PIZZA TABLE AND OPEN TOP SALADETTES

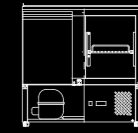
## FEATURES

- High grade stainless steel interior and exterior
- Heavy duty marble prep area (ESL3831, ESL3852 and ESL3864)
- Heavy duty stainless steel top (ESL3832 and ESL3853)
- All fitted with European parts Compressor and EBM fan motor
- 43-degree ambient working temperature
- -2 to 8 degrees working temp
- Insulation foam CH10, ODP zero emissions
- Static cooling system
- Carel Italian digital controls
- Self-evaporating drainage
- One shelf per door
- Manual defrosting system
- Regular defrosting recommended
- Compressor and condenser situated on bottom
- Unit can be positioned against a wall
- Fits GN pans
- White Epoxy shelves and stainless steel rails
- Comes installed with 4 castors for easy mobility
- ESL3831 fits 5 x 1/6 GN Pans 100mm deep
- ESL3832 fits 5 x 1/6 GN Pans 100mm deep
- ESL3853 fits 7 x 1/6 and 1 x 1/9 GN Pans 100mm deep
- ESL3864 fits 7 x 1/3 GN Pans 100mm deep
- GN Pans and Lids not included



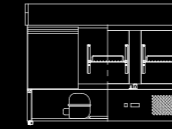
**ESL3831**

|                           |                             |
|---------------------------|-----------------------------|
| Capacity                  | 300L                        |
| Power                     | 250W                        |
| Voltage                   | 220-240V/50Hz               |
| Working Temp              | -2°C-+8°C                   |
| Ambient Temp              | 43°C                        |
| Dimensions (mm)           | W900 × D700 × H1157, 96kg   |
| Packaging Dimensions (mm) | W945 × D750 × H1260, 1125kg |



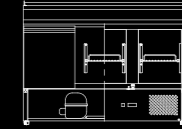
**ESL3832**

|                           |                           |
|---------------------------|---------------------------|
| Capacity                  | 300L                      |
| Power                     | 250W                      |
| Voltage                   | 220-240V/50Hz             |
| Working Temp              | -2°C-+8°C                 |
| Ambient Temp              | 43°C                      |
| Dimensions (mm)           | W900 × D700 × H1105, 77kg |
| Packaging Dimensions (mm) | W955 × D754 × H1211, 95kg |



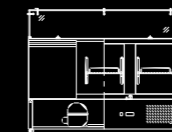
**ESL3850**

|                           |                             |
|---------------------------|-----------------------------|
| Capacity                  | 380L                        |
| Power                     | 300W                        |
| Voltage                   | 220-240V/50Hz               |
| Working Temp              | +2°C-+8°C                   |
| Ambient Temp              | 43°C                        |
| Dimensions (mm)           | W1380 × D700 × H950, 90kg   |
| Packaging Dimensions (mm) | W1420 × D754 × H1043, 120kg |



**ESL3851**

|                           |                             |
|---------------------------|-----------------------------|
| Capacity                  | 380L                        |
| Power                     | 300W                        |
| Voltage                   | 220-240V/50Hz               |
| Working Temp              | +2°C-+8°C                   |
| Ambient Temp              | 43°C                        |
| Dimensions (mm)           | W1365 × D700 × H943, 94kg   |
| Packaging Dimensions (mm) | W1420 × D754 × H1043, 124kg |



**ESL3864**

|                           |                             |
|---------------------------|-----------------------------|
| Capacity                  | 380L                        |
| Power                     | 300W                        |
| Voltage                   | 220-240V/50Hz               |
| Working Temp              | -2°C-+8°C                   |
| Ambient Temp              | 43°C                        |
| Dimensions (mm)           | W1380 × D700 × H1168, 173kg |
| Packaging Dimensions (mm) | W1420 × D754 × H1230, 209kg |

