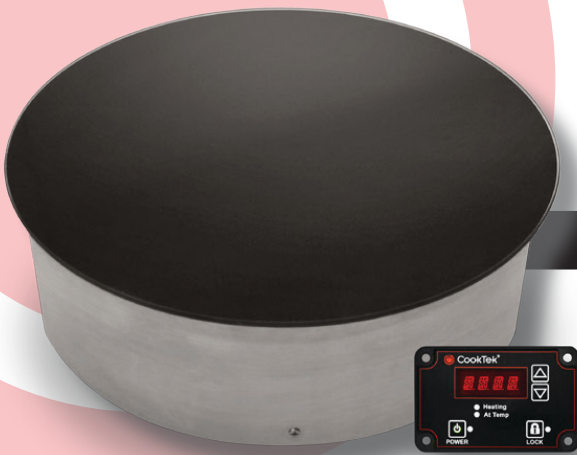


HOT HOLD BUFFET SYSTEM

Drop-in Round Buffet Warmer

B652R.D

659204



PROJECT _____

ITEM _____

QUANTITY _____

DATE _____

TECHNICAL DATA:

Dimensions (DIA x H):	330 ^Ø x 95
Cutout:	297 ^Ø
Total Weight:	3.8Kg
Wall Clearance:	51mm (152mm below)
Max Ambient Temperature:	50°C
Model:	B652R.D
Total Connected Load:	0.65kW
Volts (Single Phase):	220-240 V
Amps	10A

The round CookTek® buffet warmer features a low-wattage, whisper-quiet drop-in design with aluminum housing and a plain black glass-ceramic top. Each unit is programmed with an automatic pan detection feature to ensure maximum and efficient warming of any induction-compatible enamel cast ironware or traditional chafer.*

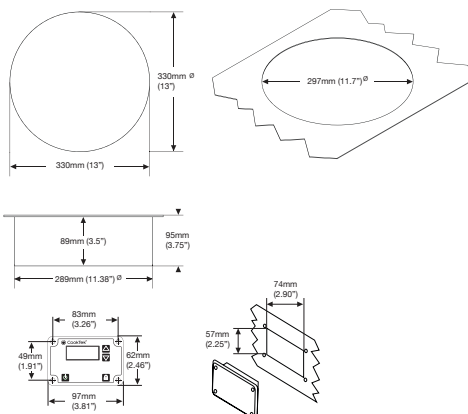
FEATURES:

- Drop-in design with aluminium housing
- Unobtrusive, easy-to-clean high-temperature glass-ceramic top
- Four standard set temperatures with an option to add up to 15 temperature settings ranging from 30°C - 120°C
- LED display
- Automatic pan detection allows for instant energy transmission to pan; almost no energy consumption when pan is not present
- Lock feature prevents unwanted setting changes
- Microprocessor monitors vital components to check for overheating, power supply issues, and more
- Large range of accessories available, please contact your Stoddart professional for additional information
- **It is important that there is adequate ventilation and clearance in the cabinetry housing the Incogneeto units. Follow the below link for installation guidelines or contact Stoddart on (07) 3440 7600**

www.stoddart.com.au/b652r-d.html



1. Chafing Dish
2. Silenzio™ Unit
3. Stone Countertop



*Induction cooking requires the use of induction-compatible (i.e. magnetic) cookware.

CERTIFICATIONS



Due to continuous product research and development, the information contained herein is subject to change without notice.

Revision: January 14, 2020 1:02 PM

www.stoddart.com.au

www.stoddart.co.nz