



Fender Liner Relocation Bracket Instructions

Tools Required:

- T15 Torx Screwdriver or Equivalent
 - 7mm Socket

Difficulty: Easy, less than an hour

Instructions:

Instructions detail installation for the driver's side, passenger side is identical to driver's side.

1. Turn wheel to lock towards the driver's side or remove wheel to gain access to the OEM screws.
2. Use the T15 screwdriver to remove the 3 T15 torx below in the inner fender well identified in Figure 1

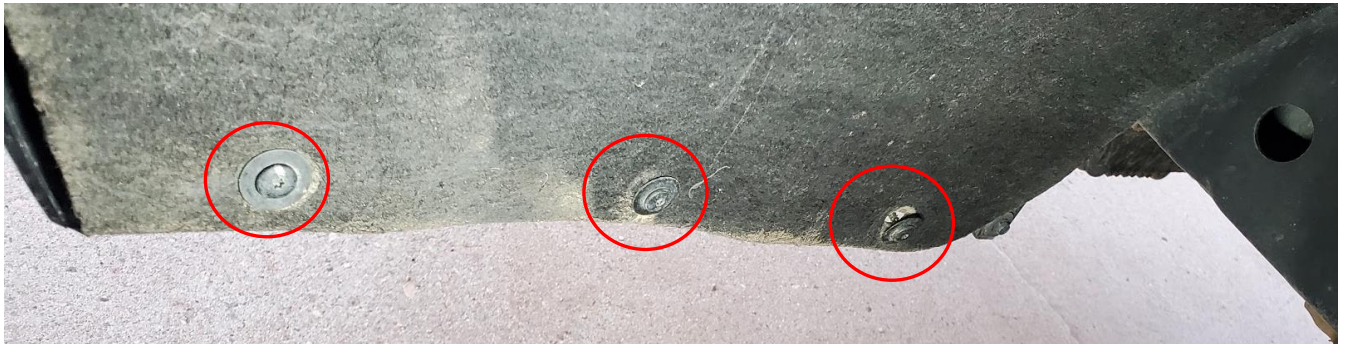


Figure 1: T15 Torx Inner Fender

3. Use the T15 screwdriver to remove the 3 T15 torx screws under the vehicle identified in Figure 2

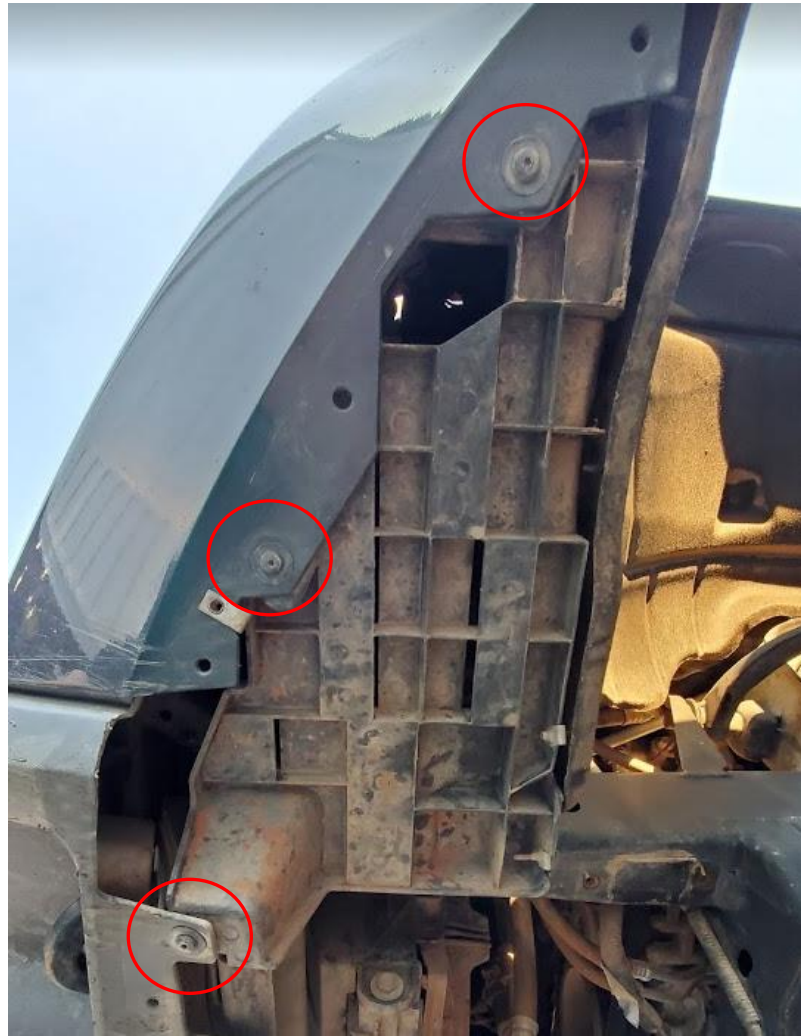


Figure 2 T15 Torx Below Vehicle

4. Use the 7mm socket to remove the screw in the inner fender well next to the frame rail identified in Figure 3



Figure 3 7mm Hex Bolt

5. Remove the original fender liner mount from the vehicle. Remove the 7 OEM nut clips from the original fender liner mount and transfer them to the new fender line brackets.

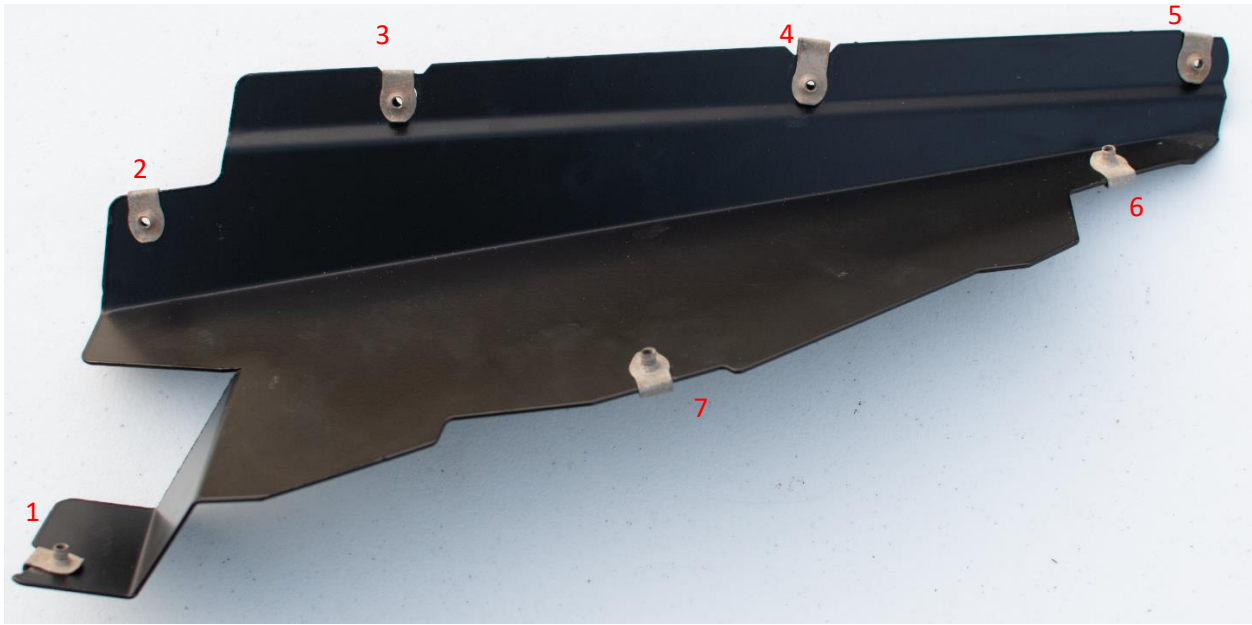


Figure 4 OEM Nut Clips

6. Install the new fender liner onto the vehicle using the OEM screws. The vertical support bracket will need to be bent towards the front of the vehicle to accommodate the new position of the 7mm hex as shown in Figure 5.

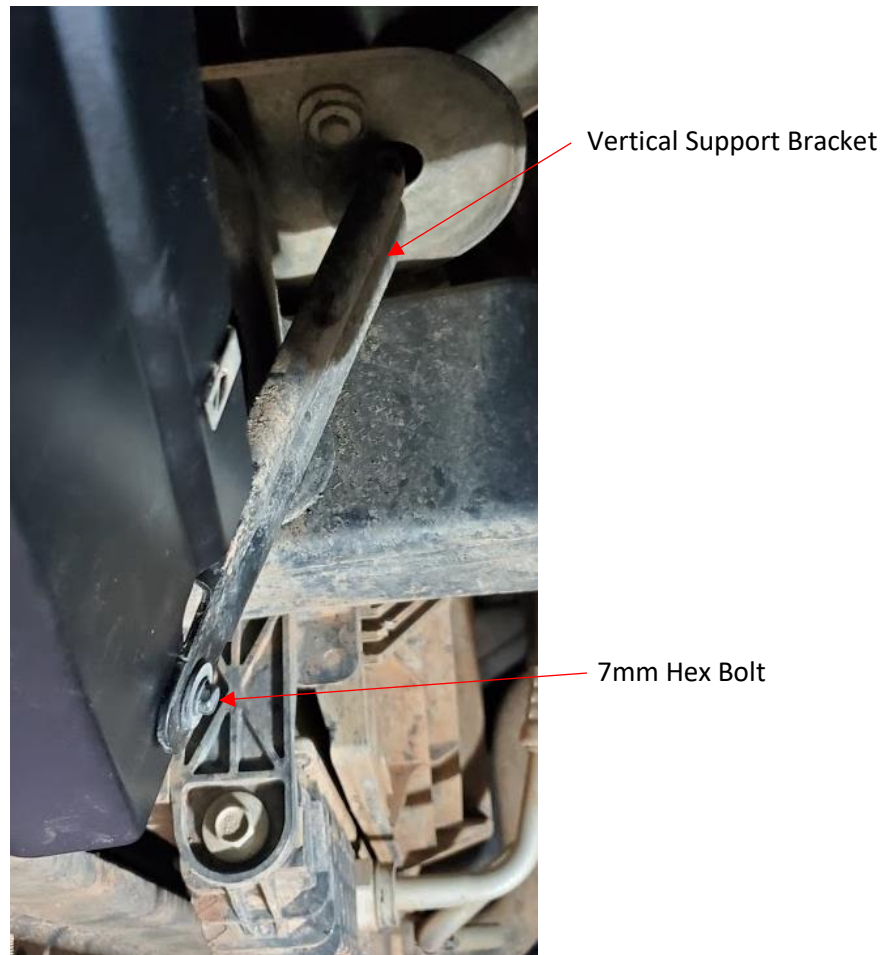


Figure 5 Vertical Support Bracket