

PARTS INCLUDED:

- STAINLESS MOUNTING TABS
- 1/4" MOUNTING HARDWARE
- 90 DEGREE MOUNTING BRACKETS (IF APPLICABLE)

TOOLS NEEDED:

- METRIC SOCKETS
- TAPE MEASURE
- COMBINATION WRENCHES
- CUTTING TOOLS
- (JIGSAW,DREMEL,ETC.)
- DRILL AND DRILL BITS 1/4" OR BIGGER

HARDWARE NEEDED:

- Supplied 1/4-20 hardware
- Supplied 1/4" washers
- Supplied 1/4"20 nuts
- Supplied mounting tabs



TECH TIPS:

- Always leave roughly an 1/8" of gap around the entire frame of the grille itself. **(On Full Replacement Grilles)**
- Leave the grille and hardware loose fitting until you have found the proper adjustment needed for a truly symmetrical fit throughout.
- Before cutting anything, always be sure to measure, tape off, and recheck your work.
- Be sure to test fit the Overkill FAB grille onto your truck grille shell after each cut or modification.
- Always take your time. Trim small amounts at a time to ensure proper fitment during test fits and final installation.
- When drilling, always start with a smaller bit that needed as a pilot hole.
- Be sure to protect the finish of all components while assembling.

ASSEMBLY/DISASSEMBLY

STEP ONE: Follow basic disassembly instructions for the OEM grille shell on the vehicle.

STEP TWO: Place the grille shell onto a flat surface. Take the Overkill FAB grille insert and identify the mounting locations.

STEP THREE: Once you have the locations of where the grille insert needs to be mounted. Identify where the cuts need to be made as well. FIGURE 1A, 1B AND 1C 1D will give you the correct locations to trim the grille shell.



FIGURE 1A



FIGURE 1B



FIGURE 1C

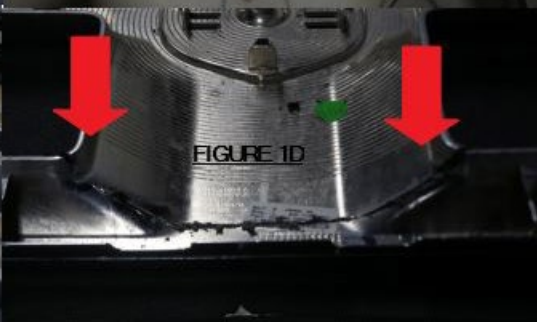


FIGURE 1D

NOTE: As you can see in the photos above, you will need to remove the factory plastic mesh as well. Following basic grille shell disassembly