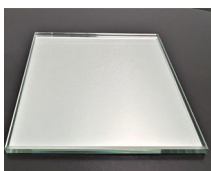
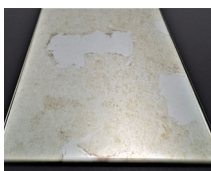


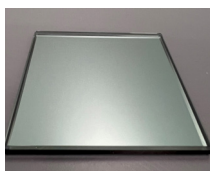
Our beautiful range of Mirror Splashbacks are the ideal way to capitalise on the light reflective qualities of Mirror finishes. A feeling of light and space is created, adding a truly stunning finishing touch to any space.



Silver



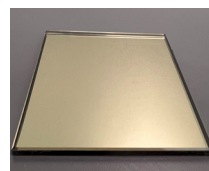
Antique Silver



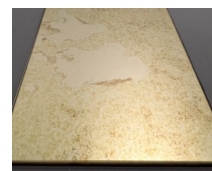
Grey



Antique Grey



Bronze



Antique Bronze

## Technical Specification

Royston Glass Mirror Splashbacks are available in dimensions up to 3000mm x 1250mm. We are able to produce splashbacks in excess of these dimensions but such orders may be subject to over-size additional charges and extended manufacturing lead times.

We use 6mm safety backed mirror as standard for our Mirror splashbacks. Using state of the art machinery we are able to provide shaping to accommodate electric sockets, cooker points and shaped cooker hoods. Lengths are available in excess of 3 metres.

Please note that Mirror Splashbacks are not toughened, unless otherwise stated. This means they are not heat resistant and are not guaranteed as such. Please also note that the Mirror Splashbacks can be vulnerable near cut-outs and drill hole locations. Please take extra care when tightening fixings.

- 6mm Safety Backed Mirror
- Polished edges, for your safety, as standard
- Shaping and cut out facility
- Adhesive or drill hole fixing option
- 6 Mirror Finishes Available
- Hygienic and easy to clean
- 10-15 Working Day Leadtime
- Samples Available on Request (£6.00 incl. VAT, each)

Please note that the sample tiles reflect light in a different manner to a larger piece of glass, which may result in a different colour tone when compared to a larger splashback.