

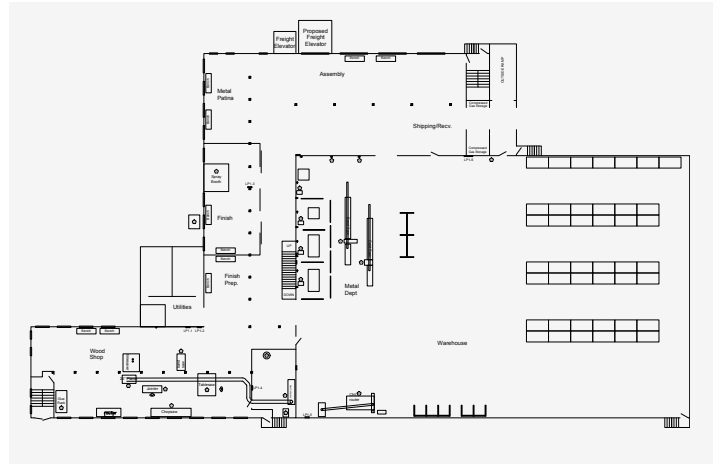
UHURU



UHURU MANUFACTURING

Uhuru Manufacturing LLC is a 50,000 square foot manufacturing and warehousing facility located in Denver, PA. This facility is a job shop employing 25 operations experts and craftsmen, focusing on custom conference tables, bespoke furniture, and high touch office and hospitality projects. The facility is strategically located in Lancaster County, a regional manufacturing hub with an extensive local network of vendors and suppliers.

UHURUDESIGN.COM



SITE

- 50,000 sq ft of manufacturing and warehousing space
- Located in Denver, PA, in a historic manufacturing building
- Standard lead time is 8 weeks

WORKFORCE

- 25 full time employees
- Office (Management, Procurement, Logistics)
- Shop Operations (Wood working, Metal working, Finishing, Assembly, Quality Control, Shipping & Receiving)

WORK

- Uhuru Standard Product - Signature collection
- Custom conference tables
- Custom bench and desk systems
- Custom reception desks

EQUIPMENT

- CNC Routing (2) 5'x10'
- Wood processing
- Metal processing
- Welding (Steel, Stainless steel, Brass, Aluminum)
- Finish preparation - Wide belt sander and Mirka sanding systems
- Side draft spray booth and finishing systems

NETWORK

The Lancaster county area is a manufacturing hub and has an extensive local network of vendors and suppliers fulfilling all supply chain needs.

- Metal forming and cutting
- Woodworking and raw materials processing
- Cabinetry and millwork
- Powder coating and industrial finishing
- Wood and metal Supply
- Machinery supply