

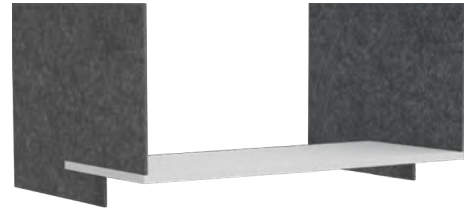
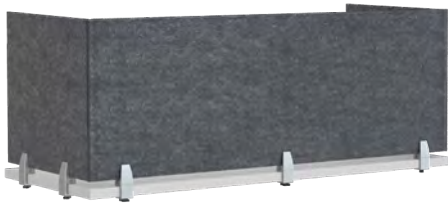
u h u r u

SCREEN

UNIVERSAL TABLE TOP + CUBICLE DIVIDER SYSTEM

PRICE LIST

PET

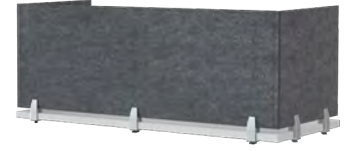


PLEXIGLASS



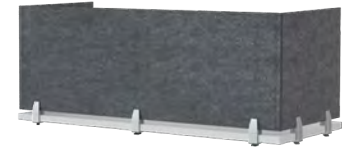
FROSTED





PET

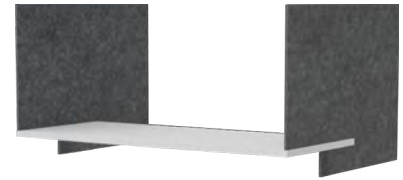
HARDWARE	MODEL NUMBER	DESCRIPTION	DIMENSIONS H x L x W	LIST PRICE	
Worksurface and Cubicle Screens - Permanent Attachment					
	SIDE SCREENS	PET1424-PS-BR	PET Screen with Permanent Attachment Brackets	13.75" x 22" x 0.5"	\$125
		PET1430-PS-BR	PET Screen with Permanent Attachment Brackets	13.75" x 28" x 0.5"	\$167
	FRONT SCREENS	PET1448-PS-BR	PET Screen with Permanent Attachment Brackets	13.75" x 48" x 0.5"	\$194
		PET1460-PS-BR	PET Screen with Permanent Attachment Brackets	13.75" x 60" x 0.5"	\$264
		PET1472-PS-BR	PET Screen with Permanent Attachment Brackets	13.75" x 72" x 0.5"	\$293
	SIDE SCREENS	PET2424-PS-BR	PET Screen with Permanent Attachment Brackets	23.75" x 22" x 0.5"	\$192
		PET2430-PS-BR	PET Screen with Permanent Attachment Brackets	23.75" x 28" x 0.5"	\$237
	FRONT SCREENS	PET2448-PS-BR	PET Screen with Permanent Attachment Brackets	23.75" x 48" x 0.5"	\$266
		PET2460-PS-BR	PET Screen with Permanent Attachment Brackets	23.75" x 60" x 0.5"	\$367
		PET2472-PS-BR	PET Screen with Permanent Attachment Brackets	23.75" x 72" x 0.5"	\$392
	Benching Divider Screens - Permanent Attachment				
		SIDE SCREENS	PET1424-PS-TMB	PET Screen with Permanent Attachment for Benching	13.75" x 22" x 0.5"
PET1430-PS-TMB			PET Screen with Permanent Attachment for Benching	13.75" x 28" x 0.5"	\$179
FRONT SCREENS		PET1448-PS-TMB	PET Screen with Permanent Attachment for Benching	13.75" x 48" x 0.5"	\$206
		PET1460-PS-TMB	PET Screen with Permanent Attachment for Benching	13.75" x 60" x 0.5"	\$276
		PET1472-PS-TMB	PET Screen with Permanent Attachment for Benching	13.75" x 72" x 0.5"	\$311
SIDE SCREENS		PET2424-PS-TMB	PET Screen with Permanent Attachment for Benching	23.75" x 22" x 0.5"	\$204
		PET2430-PS-TMB	PET Screen with Permanent Attachment for Benching	23.75" x 28" x 0.5"	\$249
FRONT SCREENS		PET2448-PS-TMB	PET Screen with Permanent Attachment for Benching	23.75" x 48" x 0.5"	\$284
		PET2460-PS-TMB	PET Screen with Permanent Attachment for Benching	23.75" x 60" x 0.5"	\$385
		PET2472-PS-TMB	PET Screen with Permanent Attachment for Benching	23.75" x 72" x 0.5"	\$410



PET

HARDWARE	MODEL NUMBER	DESCRIPTION	DIMENSIONS H x L x W	LIST PRICE	
Worksurface Screens with Removable C-Clamp					
	SIDE SCREENS	PET1424-PS-C-BR	PET Screen with C-Clamp Attachment	13.75" x 22" x 0.5"	\$185
		PET1430-PS-C-BR	PET Screen with C-Clamp Attachment	13.75" x 28" x 0.5"	\$227
	FRONT SCREENS	PET1448-PS-C-BR	PET Screen with C-Clamp Attachment	13.75" x 48" x 0.5"	\$254
		PET1460-PS-C-BR	PET Screen with C-Clamp Attachment	13.75" x 60" x 0.5"	\$324
		PET1472-PS-C-BR	PET Screen with C-Clamp Attachment	13.75" x 72" x 0.5"	\$353
	SIDE SCREENS	PET2424-PS-C-BR	PET Screen with C-Clamp Attachment	23.75" x 22" x 0.5"	\$252
		PET2430-PS-C-BR	PET Screen with C-Clamp Attachment	23.75" x 28" x 0.5"	\$297
	FRONT SCREENS	PET2448-PS-C-BR	PET Screen with C-Clamp Attachment	23.75" x 48" x 0.5"	\$326
		PET2460-PS-C-BR	PET Screen with C-Clamp Attachment	23.75" x 60" x 0.5"	\$427
		PET2472-PS-C-BR	PET Screen with C-Clamp Attachment	23.75" x 72" x 0.5"	\$452
	Free-Standing Screens for Worksurfaces and Cubicles				
		SIDE SCREENS	PET1424-PS-FOOT	PET Screen with Free-Standing Foot	13.75" x 22" x 0.5"
PET1430-PS-FOOT			PET Screen with Free-Standing Foot	13.75" x 28" x 0.5"	\$227
FRONT SCREENS		PET1448-PS-FOOT	PET Screen with Free-Standing Foot	13.75" x 48" x 0.5"	\$254
		PET1460-PS-FOOT	PET Screen with Free-Standing Foot	13.75" x 60" x 0.5"	\$324
		PET1472-PS-FOOT	PET Screen with Free-Standing Foot	13.75" x 72" x 0.5"	\$353
SIDE SCREENS		PET2424-PS-FOOT	PET Screen with Free-Standing Foot	23.75" x 22" x 0.5"	\$252
		PET2430-PS-FOOT	PET Screen with Free-Standing Foot	23.75" x 28" x 0.5"	\$294
FRONT SCREENS		PET2448-PS-FOOT	PET Screen with Free-Standing Foot	23.75" x 48" x 0.5"	\$326
		PET2460-PS-FOOT	PET Screen with Free-Standing Foot	23.75" x 60" x 0.5"	\$427
		PET2472-PS-FOOT	PET Screen with Free-Standing Foot	23.75" x 72" x 0.5"	\$452
Other Options		MAGNETS	Magnets		\$45
		TAPE	Heavy-Duty Double-Sided Tape		\$9

Worksurface Screens with Permanent Attachment and Free-Standing Screens can be used to extend cubicle panel height. Use strong magnets, or heavy-duty double-sided tape to avoid cubicle cap damage.



PET

HARDWARE	MODEL NUMBER	DESCRIPTION	DIMENSIONS H x L x W	LIST PRICE
Privacy/Modesty Screens				
	PET2448-PSMP-BR	PET Privacy/Modesty Screen with Permanent Attachment	23.75" x 48" x 0.5"	\$244
	PET2460-PSMP-BR	PET Privacy/Modesty Screen with Permanent Attachment	23.75" x 60" x 0.5"	\$355
	PET2472-PSMP-BR	PET Privacy/Modesty Screen with Permanent Attachment	23.75" x 72" x 0.5"	\$317
Sliding Desk Divider				
	PET2424-EXT	PET Sliding Desk Divider Screen for 24"D Worksurface, 24" above surface	30" x 42" x 1"	\$506
	PET2430-EXT	PET Sliding Desk Divider Screen for 30"D Worksurface, 24" above surface	30" x 48" x 1"	\$516



Plexiglass

HARDWARE	MODEL NUMBER	DESCRIPTION	DIMENSIONS H X L X W	LIST PRICE	
Worksurface and Cubicle Screens - Permanent Attachment					
	SIDE SCREENS	PLEX1424-PS-BR	Plexiglass Screen with Permanent Attachment Brackets	14" x 23.5" x 0.25"	\$80
		PLEX1430-PS-BR	Plexiglass Screen with Permanent Attachment Brackets	14" x 29.5" x 0.25"	\$86
	FRONT SCREENS	PLEX1448-PS-BR	Plexiglass Screen with Permanent Attachment Brackets	14" x 48" x 0.25"	\$115
		PLEX1460-PS-BR	Plexiglass Screen with Permanent Attachment Brackets	14" x 60" x 0.25"	\$146
		PLEX1472-PS-BR	Plexiglass Screen with Permanent Attachment Brackets	14" x 72" x 0.25"	\$163
	SIDE SCREENS	PLEX2424-PS-BR	Plexiglass Screen with Permanent Attachment Brackets	24" x 23.5" x 0.25"	\$103
		PLEX2430-PS-BR	Plexiglass Screen with Permanent Attachment Brackets	24" x 29.5" x 0.25"	\$118
	FRONT SCREENS	PLEX2448-PS-BR	Plexiglass Screen with Permanent Attachment Brackets	24" x 48" x 0.25"	\$176
		PLEX2460-PS-BR	Plexiglass Screen with Permanent Attachment Brackets	24" x 60" x 0.25"	\$206
		PLEX2472-PS-BR	Plexiglass Screen with Permanent Attachment Brackets	24" x 72" x 0.25"	\$235
Benching Divider Screens - Permanent Attachment					
	SIDE SCREENS	PLEX1424-PS-TMB	Plexiglass Screen with Permanent Attachment for Benching	14" x 23.5" x 0.25"	\$92
		PLEX1430-PS-TMB	Plexiglass Screen with Permanent Attachment for Benching	14" x 29.5" x 0.25"	\$98
	FRONT SCREENS	PLEX1448-PS-TMB	Plexiglass Screen with Permanent Attachment for Benching	14" x 48" x 0.25"	\$127
		PLEX1460-PS-TMB	Plexiglass Screen with Permanent Attachment for Benching	14" x 60" x 0.25"	\$164
		PLEX1472-PS-TMB	Plexiglass Screen with Permanent Attachment for Benching	14" x 72" x 0.25"	\$181
	SIDE SCREENS	PLEX2424-PS-TMB	Plexiglass Screen with Permanent Attachment for Benching	24" x 23.5" x 0.25"	\$115
		PLEX2430-PS-TMB	Plexiglass Screen with Permanent Attachment for Benching	24" x 29.5" x 0.25"	\$130
	FRONT SCREENS	PLEX2448-PS-TMB	Plexiglass Screen with Permanent Attachment for Benching	24" x 48" x 0.25"	\$196
		PLEX2460-PS-TMB	Plexiglass Screen with Permanent Attachment for Benching	24" x 60" x 0.25"	\$224
		PLEX2472-PS-TMB	Plexiglass Screen with Permanent Attachment for Benching	24" x 72" x 0.25"	\$253



Plexiglass

HARDWARE	MODEL NUMBER	DESCRIPTION	DIMENSIONS H X L X W		
Worksurface Screens with Removable C-Clamp					
	SIDE SCREENS	PLEX1424-PS-C-BR	Plexiglass Screen with C-Clamp Attachment	14" x 23.5" x 0.25"	\$140
		PLEX1430-PS-C-BR	Plexiglass Screen with C-Clamp Attachment	14" x 29.5" x 0.25"	\$146
	FRONT SCREENS	PLEX1448-PS-C-BR	Plexiglass Screen with C-Clamp Attachment	14" x 48" x 0.25"	\$174
		PLEX1460-PS-C-BR	Plexiglass Screen with C-Clamp Attachment	14" x 60" x 0.25"	\$206
		PLEX1472-PS-C-BR	Plexiglass Screen with C-Clamp Attachment	14" x 72" x 0.25"	\$223
	SIDE SCREENS	PLEX2424-PS-C-BR	Plexiglass Screen with C-Clamp Attachment	24" x 23.5" x 0.25"	\$163
		PLEX2430-PS-C-BR	Plexiglass Screen with C-Clamp Attachment	24" x 29.5" x 0.25"	\$178
	FRONT SCREENS	PLEX2448-PS-C-BR	Plexiglass Screen with C-Clamp Attachment	24" x 48" x 0.25"	\$238
		PLEX2460-PS-C-BR	Plexiglass Screen with C-Clamp Attachment	24" x 60" x 0.25"	\$266
		PLEX2472-PS-C-BR	Plexiglass Screen with C-Clamp Attachment	24" x 72" x 0.25"	\$295
Free-Standing Screens for Worksurfaces and Cubicles					
	SIDE SCREENS	PLEX1424-PS-FOOT	Plexiglass Screen with Free-Standing Foot	14" x 23.5" x 0.25"	\$140
		PLEX1430-PS-FOOT	Plexiglass Screen with Free-Standing Foot	14" x 29.5" x 0.25"	\$146
	FRONT SCREENS	PLEX1448-PS-FOOT	Plexiglass Screen with Free-Standing Foot	14" x 48" x 0.25"	\$174
		PLEX1460-PS-FOOT	Plexiglass Screen with Free-Standing Foot	14" x 60" x 0.25"	\$206
		PLEX1472-PS-FOOT	Plexiglass Screen with Free-Standing Foot	14" x 72" x 0.25"	\$223
	SIDE SCREENS	PLEX2424-PS-FOOT	Plexiglass Screen with Free-Standing Foot	24" x 23.5" x 0.25"	\$163
		PLEX2430-PS-FOOT	Plexiglass Screen with Free-Standing Foot	24" x 29.5" x 0.25"	\$178
	FRONT SCREENS	PLEX2448-PS-FOOT	Plexiglass Screen with Free-Standing Foot	24" x 48" x 0.25"	\$238
		PLEX2460-PS-FOOT	Plexiglass Screen with Free-Standing Foot	24" x 60" x 0.25"	\$266
		PLEX2472-PS-FOOT	Plexiglass Screen with Free-Standing Foot	24" x 72" x 0.25"	\$295
Other Options	MAGNETS	Magnets		\$45	
	TAPE	Heavy-Duty Double-Sided Tape		\$9	

Worksurface Screens with Permanent Attachment and Free-Standing Screens can be used to extend cubicle panel height. Use strong magnets, or heavy-duty double-sided tape to avoid cubicle cap damage.



Frosted

HARDWARE	MODEL NUMBER	DESCRIPTION	DIMENSIONS H x L x W	LIST PRICE	
Worksurface and Cubicle Screens - Permanent Attachment					
	SIDE SCREENS	AP1224-PS-BR	Frosted Screen with Permanent Attachment Brackets	12" x 20.5" x 0.19"	\$103
		AP1230-PS-BR	Frosted Screen with Permanent Attachment Brackets	12" x 26.5" x 0.19"	\$103
	FRONT SCREENS	AP1248-PS-BR	Frosted Screen with Permanent Attachment Brackets	12" x 48" x 0.19"	\$198
		AP1260-PS-BR	Frosted Screen with Permanent Attachment Brackets	12" x 60" x 0.19"	\$231
		AP1272-PS-BR	Frosted Screen with Permanent Attachment Brackets	12" x 72" x 0.19"	\$264
	SIDE SCREENS	AP2424-PS-BR	Frosted Screen with Permanent Attachment Brackets	24" x 20.5" x 0.25"	\$137
		AP2430-PS-BR	Frosted Screen with Permanent Attachment Brackets	24" x 26.5" x 0.25"	\$167
	FRONT SCREENS	AP2448-PS-BR	Frosted Screen with Permanent Attachment Brackets	24" x 48" x 0.25"	\$262
		AP2460-PS-BR	Frosted Screen with Permanent Attachment Brackets	24" x 60" x 0.25"	\$323
		AP2472-PS-BR	Frosted Screen with Permanent Attachment Brackets	24" x 72" x 0.25"	\$385
Benching Divider Screens - Permanent Attachment					
	SIDE SCREENS	AP1224-PS-TMB	Frosted Screen with Permanent Attachment for Benching	12" x 20.5" x 0.19"	\$115
		AP1230-PS-TMB	Frosted Screen with Permanent Attachment for Benching	12" x 26.5" x 0.19"	\$115
	FRONT SCREENS	AP1248-PS-TMB	Frosted Screen with Permanent Attachment for Benching	12" x 48" x 0.19"	\$210
		AP1260-PS-TMB	Frosted Screen with Permanent Attachment for Benching	12" x 60" x 0.19"	\$243
		AP1272-PS-TMB	Frosted Screen with Permanent Attachment for Benching	12" x 72" x 0.19"	\$282
	SIDE SCREENS	AP2424-PS-TMB	Frosted Screen with Permanent Attachment for Benching	24" x 20.5" x 0.25"	\$149
		AP2430-PS-TMB	Frosted Screen with Permanent Attachment for Benching	24" x 26.5" x 0.25"	\$179
	FRONT SCREENS	AP2448-PS-TMB	Frosted Screen with Permanent Attachment for Benching	24" x 48" x 0.25"	\$280
		AP2460-PS-TMB	Frosted Screen with Permanent Attachment for Benching	24" x 60" x 0.25"	\$341
		AP2472-PS-TMB	Frosted Screen with Permanent Attachment for Benching	24" x 72" x 0.25"	\$402



Frosted

HARDWARE	MODEL NUMBER	DESCRIPTION	DIMENSIONS H x L x W	LIST PRICE	
Worksurface Screens with Removable C-Clamp					
	SIDE SCREENS	AP1224-PS-C-BR	Frosted Screen with C-Clamp Attachment	12" x 20.5" x 0.19"	\$163
		AP1230-PS-C-BR	Frosted Screen with C-Clamp Attachment	12" x 26.5" x 0.19"	\$163
	FRONT SCREENS	AP1248-PS-C-BR	Frosted Screen with C-Clamp Attachment	12" x 48" x 0.19"	\$258
		AP1260-PS-C-BR	Frosted Screen with C-Clamp Attachment	12" x 60" x 0.19"	\$291
		AP1272-PS-C-BR	Frosted Screen with C-Clamp Attachment	12" x 72" x 0.19"	\$324
	SIDE SCREENS	AP2424-PS-C-BR	Frosted Screen with C-Clamp Attachment	24" x 20.5" x 0.25"	\$197
		AP2430-PS-C-BR	Frosted Screen with C-Clamp Attachment	24" x 26.5" x 0.25"	\$227
	FRONT SCREENS	AP2448-PS-C-BR	Frosted Screen with C-Clamp Attachment	24" x 48" x 0.25"	\$322
		AP2460-PS-C-BR	Frosted Screen with C-Clamp Attachment	24" x 60" x 0.25"	\$383
		AP2472-PS-C-BR	Frosted Screen with C-Clamp Attachment	24" x 72" x 0.25"	\$445
Freestanding Screens for Worksurfaces and Cubicles					
	SIDE SCREENS	AP1224-PS-FOOT	Frosted Screen with Free-Standing Foot	12" x 20.5" x 0.19"	\$163
		AP1230-PS-FOOT	Frosted Screen with Free-Standing Foot	12" x 26.5" x 0.19"	\$163
	FRONT SCREENS	AP1248-PS-FOOT	Frosted Screen with Free-Standing Foot	12" x 48" x 0.19"	\$258
		AP1260-PS-FOOT	Frosted Screen with Free-Standing Foot	12" x 60" x 0.19"	\$291
		AP1272-PS-FOOT	Frosted Screen with Free-Standing Foot	12" x 72" x 0.19"	\$324
	SIDE SCREENS	AP2424-PS-FOOT	Frosted Screen with Free-Standing Foot	24" x 20.5" x 0.25"	\$197
		AP2430-PS-FOOT	Frosted Screen with Free-Standing Foot	24" x 26.5" x 0.25"	\$227
	FRONT SCREENS	AP2448-PS-FOOT	Frosted Screen with Free-Standing Foot	24" x 48" x 0.25"	\$322
		AP2460-PS-FOOT	Frosted Screen with Free-Standing Foot	24" x 60" x 0.25"	\$383
		AP2472-PS-FOOT	Frosted Screen with Free-Standing Foot	24" x 72" x 0.25"	\$445
Other Options	MAGNETS	Magnets		\$45	
	TAPE	Heavy-Duty Double-Sided Tape		\$9	

Worksurface Screens with Permanent Attachment and Free-Standing Screens can be used to extend cubicle panel height. Use strong magnets, or heavy-duty double-sided tape to avoid cubicle cap damage.