

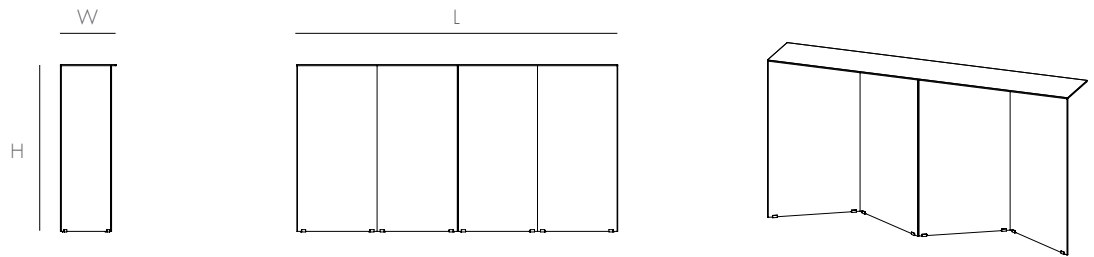


TACK CONSOLE IN BRASS

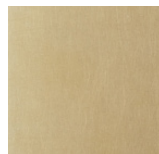
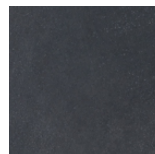
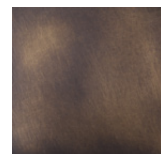
The Tack Console in Brass explores the nuances of minimal planes, angles, and intersections. Crafted from solid brass and seamlessly welded together, the Tack is hand made to order in our studio. The brass is hand finished in custom patinas and sits as a sculptural composition in any lobby, foyer, or common area. Available in solid brass and colors. A study in angles & geometry and a nod to the legacy of minimalist icons, the Tack Collection is a celebration of structural simplicity.

DIMENSIONS

L69 W12 H36



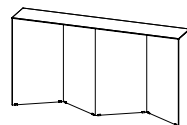
AVAILABLE IN

BRIGHT BRASS
S1TKCL0106BLACK BRASS
S1TKCL0107ANTIQUÉ BRASS
S1TKCL0108

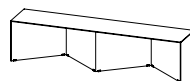
DETAILS

- Solid brass, hand-finished in custom patinas.
- Given the hand-finished nature of our brass patinas, variations are to be expected and celebrated. Each item is unique and no two are exactly alike. Images on our websites and items displayed in our showroom may vary from your actual piece.
- Rubber feet beneath base edges protect surfaces
- Ships fully assembled. Due to its weight, this piece requires special handling and delivers only via White Glove.

FAMILY



CONSOLE



BENCH



END TABLE



STOOL

NOTES

- See Assembly & Care Instructions for more information