

WINTER 19



LOOKBOOK



LUSH LIFE.

Step into a realm of dramatic juxtapositions and luscious imaginings.

Our Winter 19 collection offers a focused assembly of four accessory and nine garment patterns inspired by the comforting allure of agile colorplay, bold jewel tones, and eye-dazzling textural collage.

In effect, this collection encapsulates our midwinter yearnings — slivers of light shining through parted drapery, effervescent richness bursting out of the dark, and lush life emerging from the cracks — delivered through the ever-familiar embrace of woolen fabric.

We hope that as you sink deep and cocoon in our Winter 19 lookbook, you'll find pieces that delight and spark your fervor to make in the new year.



FLORIN *Shelter*
Véronik Avery 11–16 skeins
→ Photographed in *Old World, Fossil,*
and Caribou



FABIOLA *Loft*
Gudrun Johnston 9–12 skeins

→ Photographed in *Artifact*, *Barn Owl*,
and *Faded Quilt*; *Pumpnickel*, *Long*
Johns, and *Wool Socks*





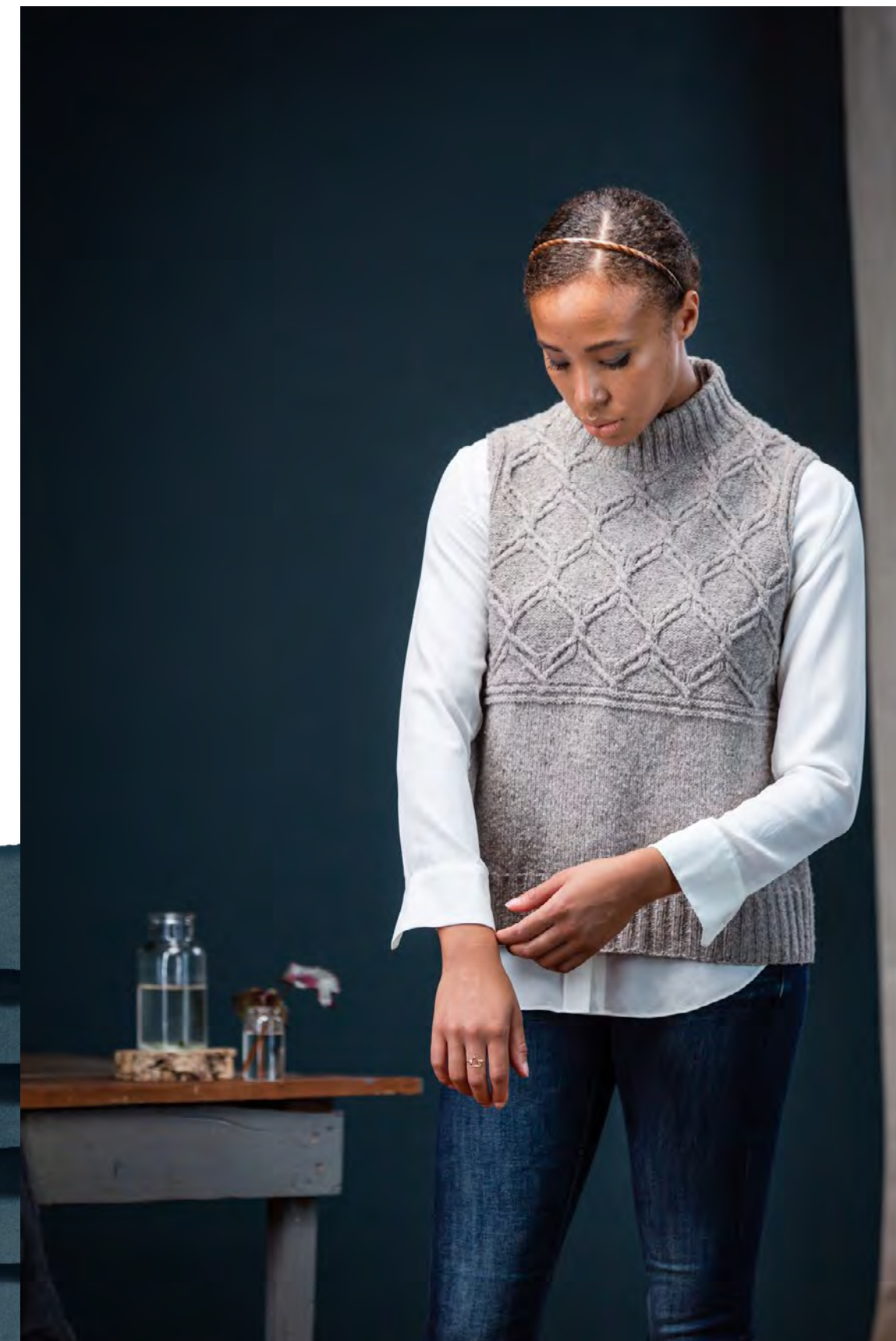
GILDA *Vale*
Véronik Avery 3 skeins
→ Photographed in *Nocturne*





INES *Peerie*
Norah Gaughan 7-11 skeins
→ Photographed in *Calluna*





MARTE *Loft*
Julie Hoover 5-7 skeins
→ Photographed in *Woodsmoke*



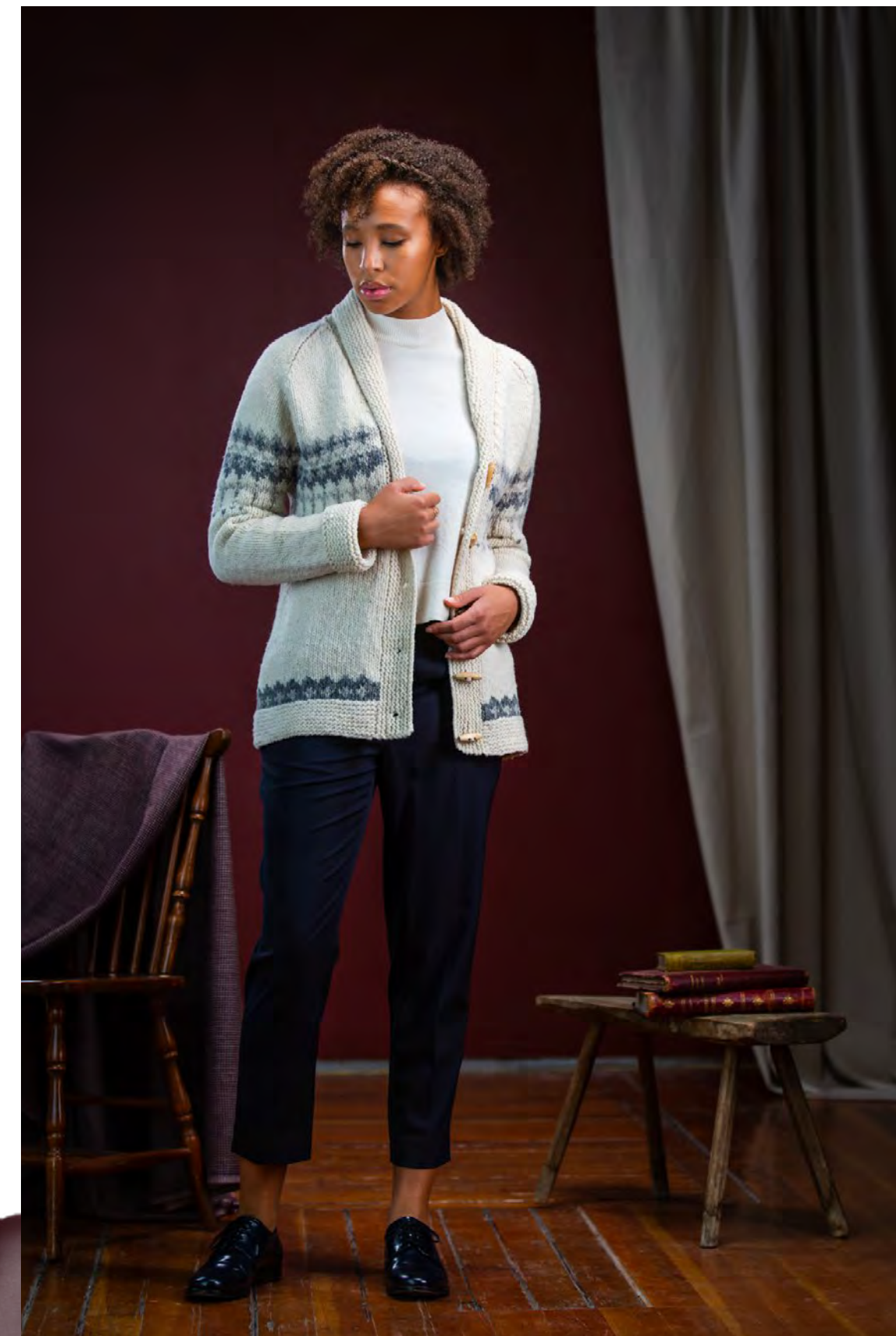
CETUS *Arbor*
Gudrun Johnston 2 skeins
→ Photographed in *Parka* and *Black Fig*







NICOLA *Shelter*
Véronik Avery 10–16 skeins
→ Photographed in *Tartan*



PASCAL
Gudrun Johnston

Quarry
8-11 skeins

→ Photographed in *Sandstone, Slate, and Citrine*; *Gypsum, Granite, and Sandstone*; and *Lazulite, Flint, and Granite*





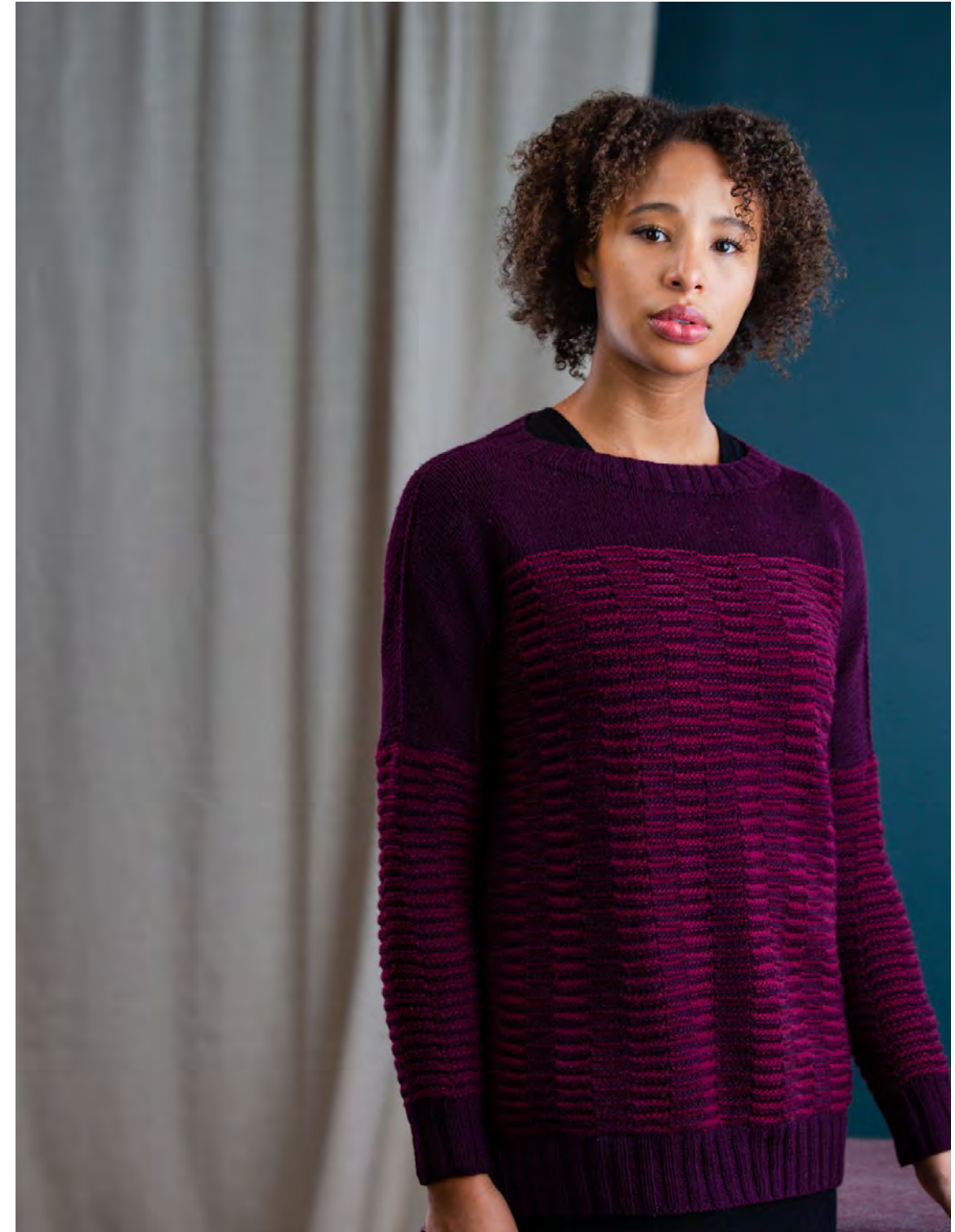
WATERMARK *Shelter*
Jared Flood 13–18 skeins
→ Photographed in *Fossil* and *Almanac*



PILASTER *Peerie*
Julie Hoover 9-14 skeins
→ Photographed in *Vintner*



TAVOLA *Arbor*
Norah Gaughan 11–16 skeins
→ Photographed in colors *Cobbler* and *Potion*





TREEFOLDS

Jared Flood

Peerie

2 skeins



Photographed in *Tincture*, *Palazzo*,
and *Nocturne*





VESTA *Arbor*
Norah Gaughan 7 skeins
→ Photographed in *Treehouse*

PRODUCTION TEAM

Creative Direction & Photography

Jared Flood

Project Coordination

Lis Smith

Pattern Writing & Senior Technical Editing

Alexandra Virgiel + Boann Petersen

Technical Editing

Sue McCain + Christine Craig

Pattern Proofing

Jamie Maccarthy + Lis Smith

Copywriting

Korina Yoo

Sample Knitting

Yvonne Allen Wannietta Kirkpatrick
Trish Austad Jamie Maccarthy
Josie Branco Alyssa Mackintosh
Julia Brenner Angelique Mark
Jennifer Carpman Chaitanya Muralidhara
Christine Craig Aidan Owen
Lydia Hanson Larisa Phipps
LuAnn Helt Elke Probst
Jen Hurley Deborah Terrio
Erica Jones Lis Smith
Joan Kass Katrin Valdre
Martha Wissing

Styling

Korina Yoo

Hair & Makeup

Kristen Arnett

Models

Paige Moreland, Jessi Walters, + Ron Wright

Pattern Layout & Graphic Design

Caitlin Lomen + Megan Newell



KEEP IN TOUCH



Facebook



Instagram



Pinterest



Ravelry



Twitter

#BROOKLYNTWEED



WWW.BROOKLYNTWEED.COM