

WOOL PEOPLE

LOOK BOOK // volume 1



It's been almost a year since the launch of Brooklyn Tweed's first American wool yarn, SHELTER. I remember well all the planning, waiting, nerves, & excitement that accompanied the months leading up to that release – but probably most of all, how I couldn't wait to get to designing with a yarn that really spoke to my inspirations. And as I began (and continue) my own creative work with the yarn, I found myself beginning to wonder what this wool might inspire in the hands of other Creatives whose work I have admired from afar.

This simple curiosity became the basis for WOOL PEOPLE: a semi-annual design series curated by Brooklyn Tweed, the first installment of which we are proud to release just in time for high knitting season.

For this first collection of patterns, I sought out designers both near and far whose work – which comprises its own wonderful variety – I have long watched and admired. My plan: arm them with a healthy dose of wool and see what happens.

The process has been so rewarding. We worked directly with each designer, discussing their ideas and sketches to construct a collection that we think will appeal to the sensibilities of our readers, and will welcome Fall in the best way knitters know how. The creative dialogue that is at the heart of this series has been invigorating – a welcome contrast to the virtual solitude I was in just a year ago!

Our first group of Wool People has been so much fun to work with. Some of their names you may recognize, others you may not, but in all cases I hope there will be something for everyone to enjoy. At the back of the Look Book you'll find photos and bios of all 14 contributors. We encourage you to take a minute to read more about the talent!

Each design in the collection is available now as a PDF download. The Catalog pages follow our designer bio spread and provide sizing information as well as clickable links to each design on our web site for purchase. Details about SHELTER yarn may also be found there.

As the publishing world continues to change rapidly, designers are working differently. Having designed independently for many years, I see the problems that designers face in this industry every day. We've worked hard to put together a model that compensates designers fairly (and gratefully!) for their work. **A portion of all proceeds from digital pattern sales go directly to the individual designer for the life of the pattern.** In the spirit of collaboration, each designer also retains the rights to their own work. We plan to continue developing this model in future WP collections to best serve those people who have made this project possible.

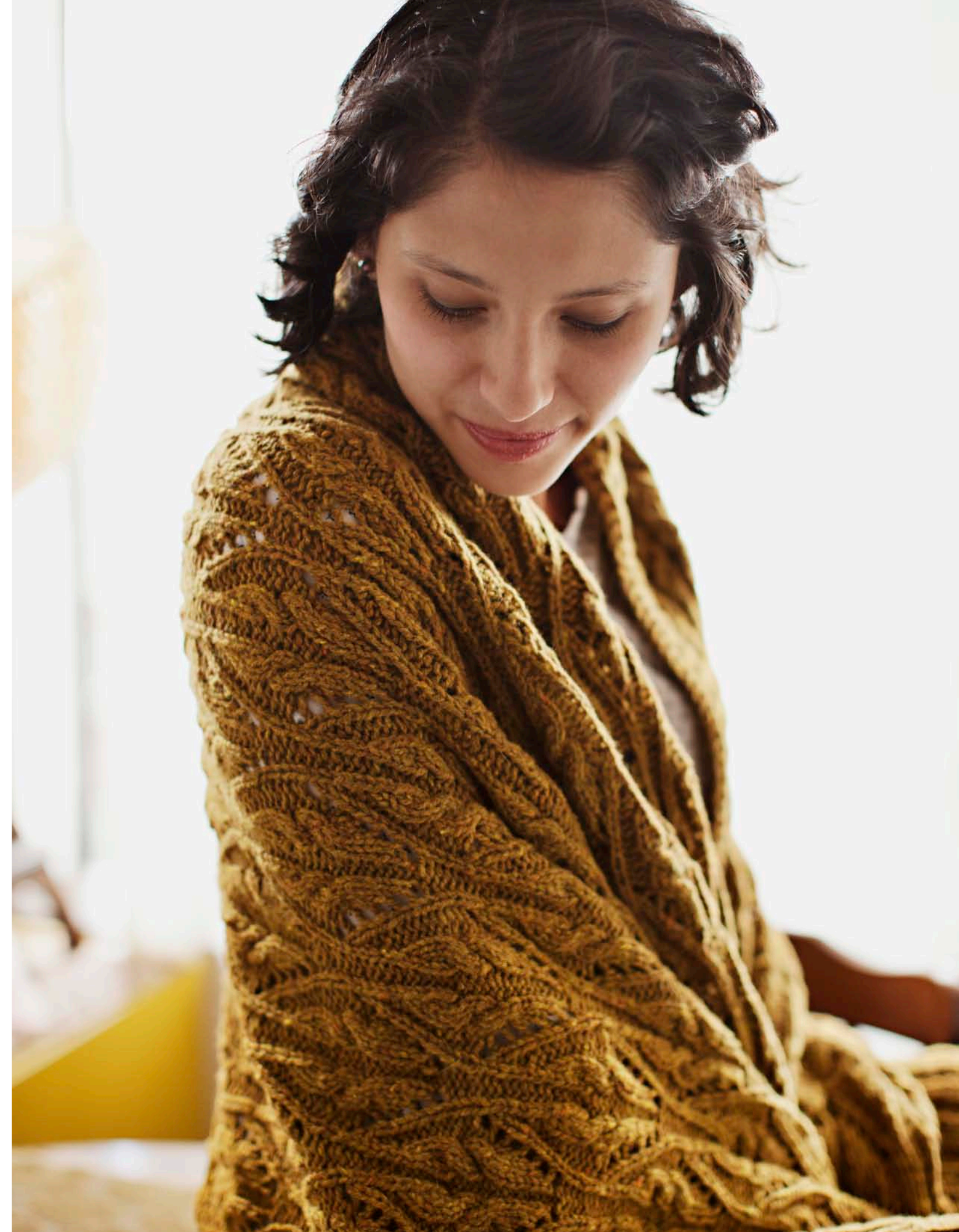
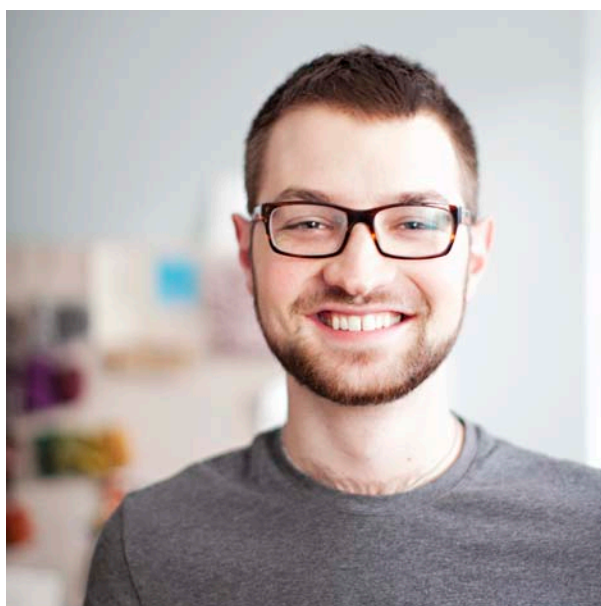
It's been a hot summer and we here at Brooklyn Tweed HQ are certainly daydreaming of Fall's arrival. I hope some of the designs and photographs within these pages inspire you to do the same (if you weren't already!).

All my best,



Jared

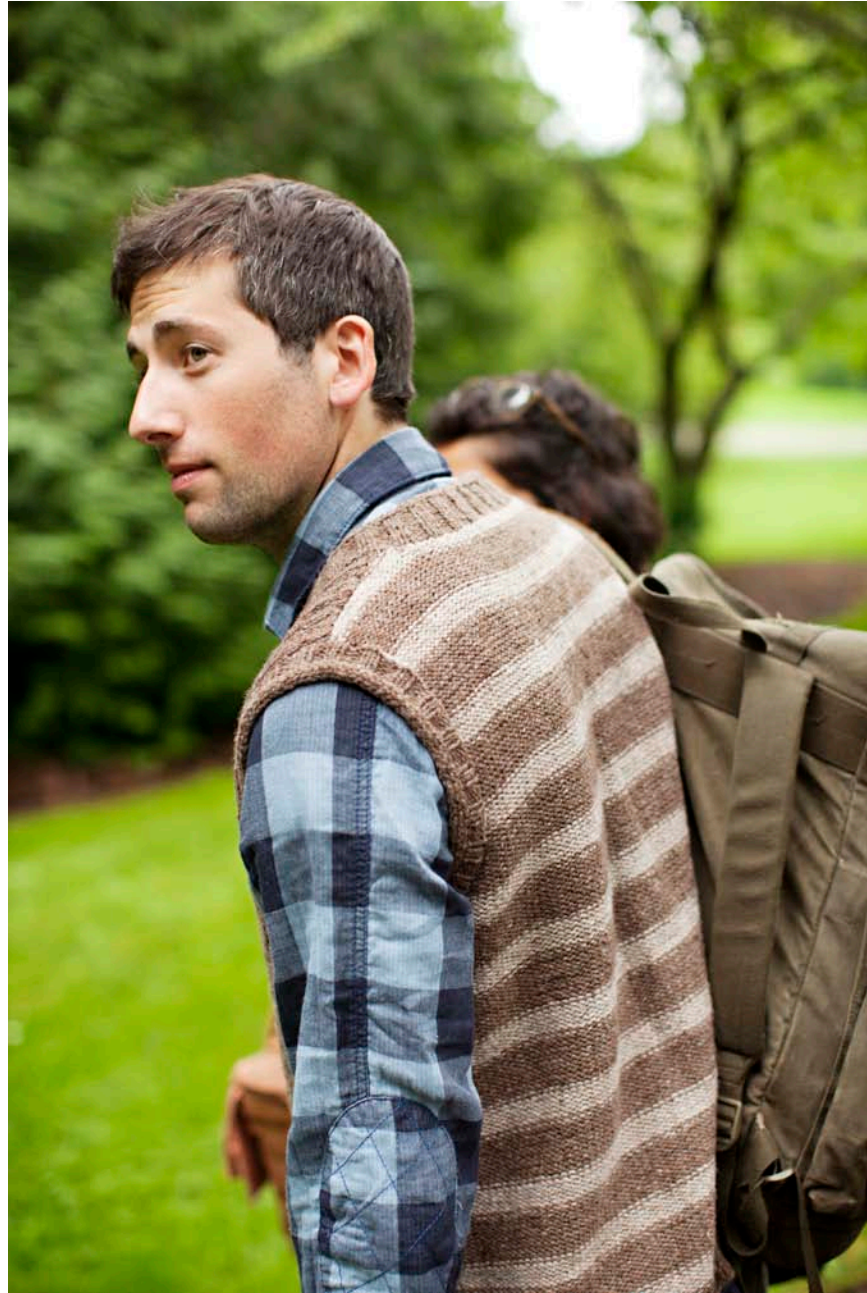
OUTPOST





CALDWELL VEST
men's open-front vest, honeycomb
cables, afterthought pockets,
i-cord trim, reverse stockinette
striped back, rustic wooden tog-
gles // *nest & woodsmoke*

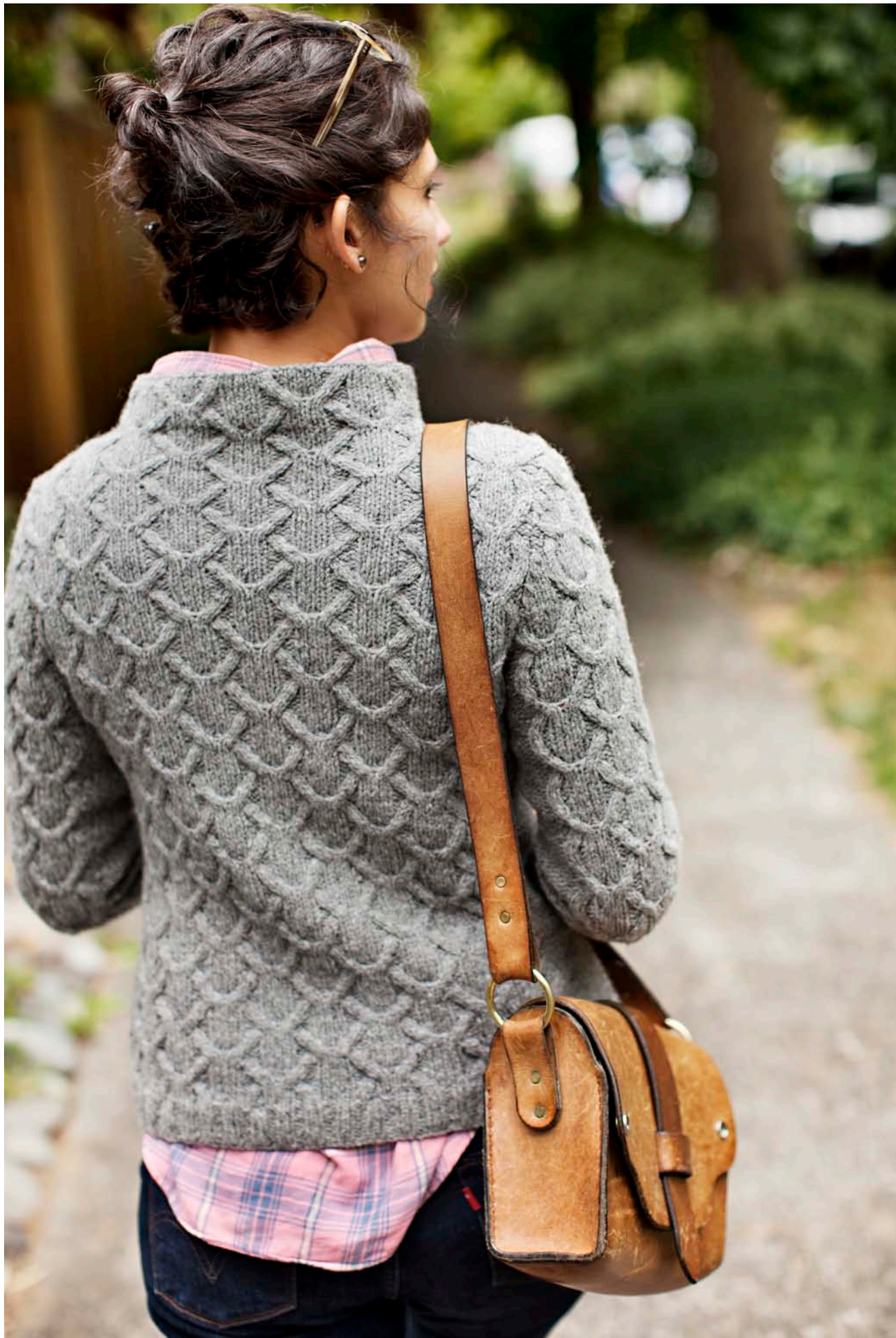
designed by Stephen West



SHIPYARD MITTENS
forearm length, subtle striping motif,
flip-top construction, crocheted
button loops, wooden buttons, 1x1
ribbed hem // fossil & woodsmoke

designed by Carrie Bostick Hoge





SHADOW PULLOVER

all-over cabled texture, set-in sleeve,
four-piece construction, funnel neck with
stockinette lining, optional integrated
pouch pockets, ribbed hems // *sweatshirt*

designed by Olga Buraya-Kefelian

adult small // hayloft & woodsmoke

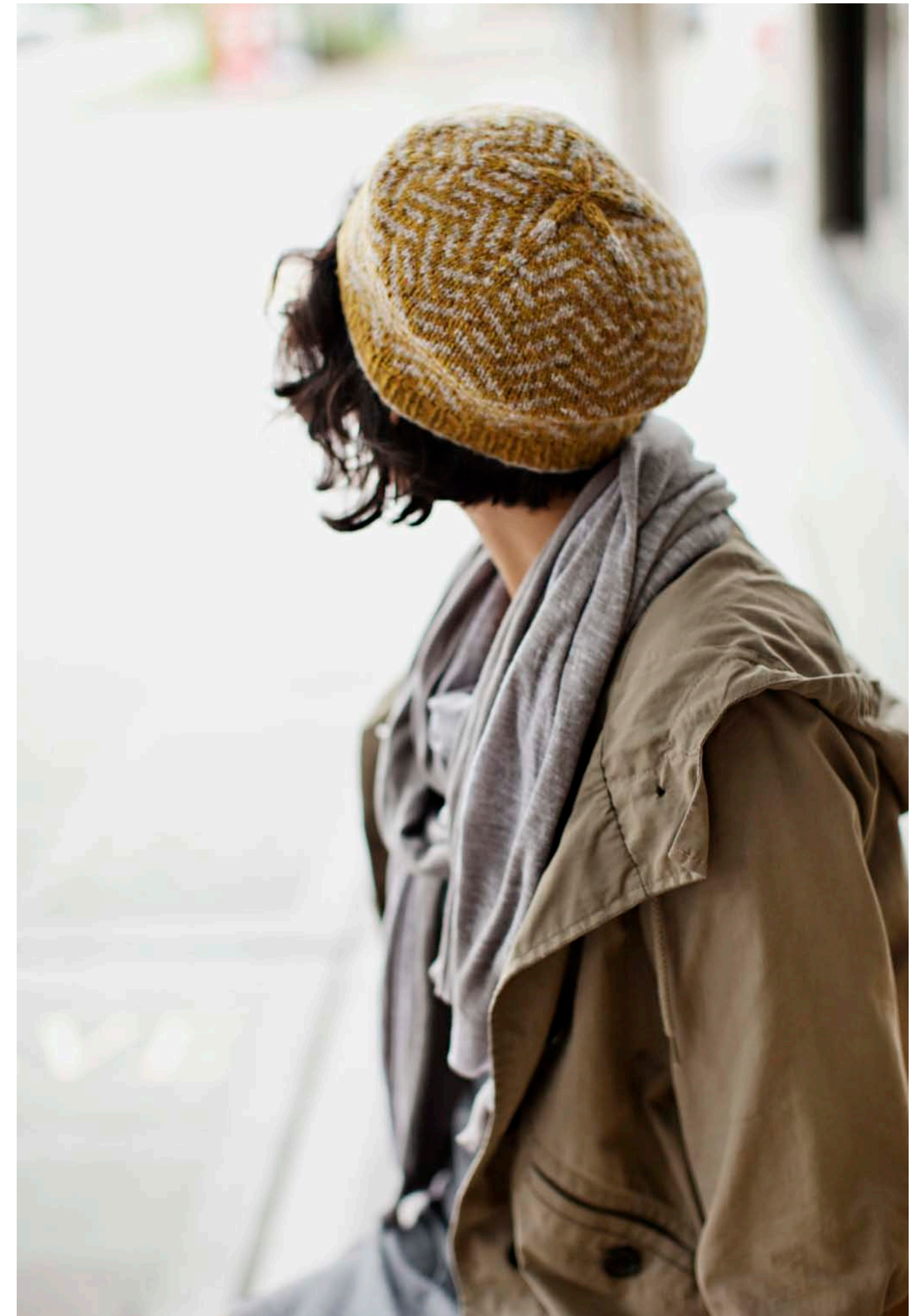


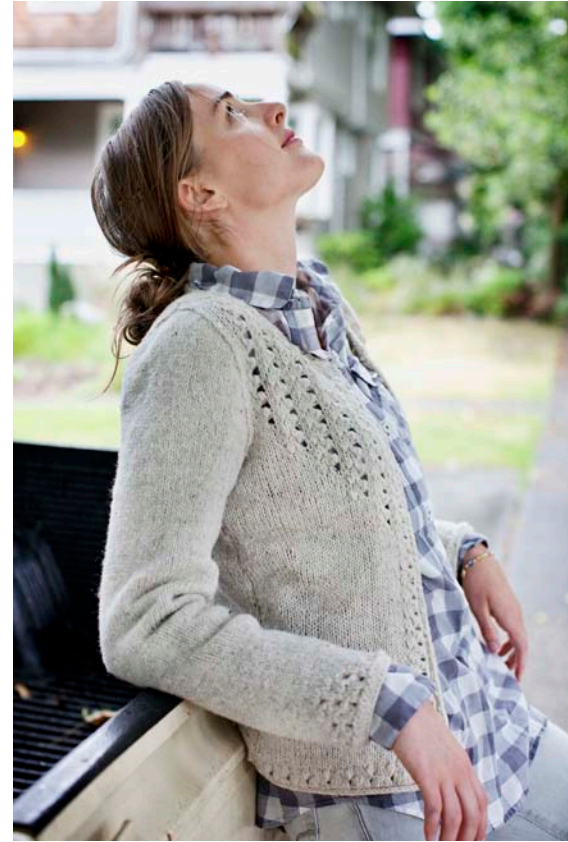
adult large // wool socks & woodsmoke



VEGA HAT
two-color stranded fabric, geometric patterning, integrated crown motif, 1x1 ribbed band, contrasting color cast-on detail, two sizes available

designed by Alexis Winslow





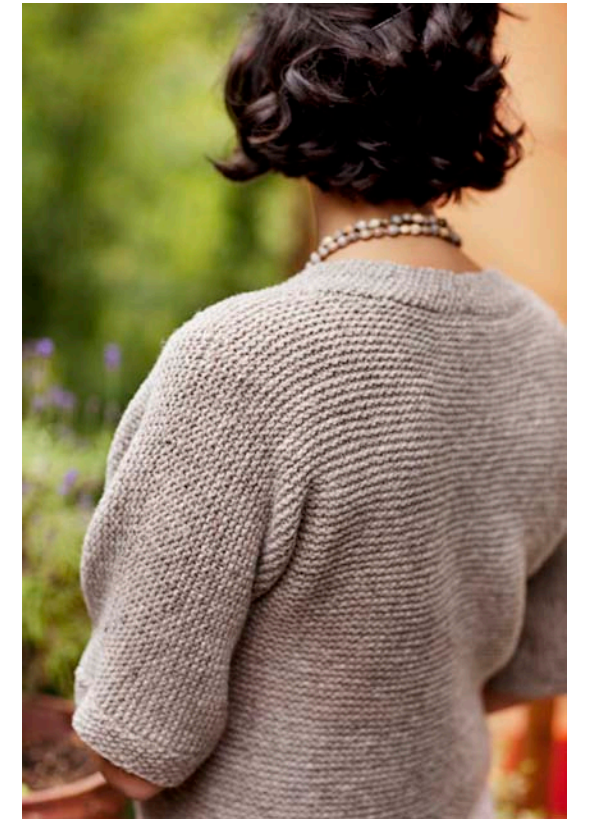
SULLIVAN CARDIGAN
seamless set-in sleeve, knit circularly, bottom-up construction, textured details, clasp closure, cuff and back neck detailing, i-cord trim // fossil

designed by Whitney Gegg-Harrison



ACADIA CARDIGAN
three-piece dolman construction, garter
stitch fabric with seed stitch trims, deep
v-neck, gently sloped short-row shoulder,
wooden buttons // *woodsmoke*

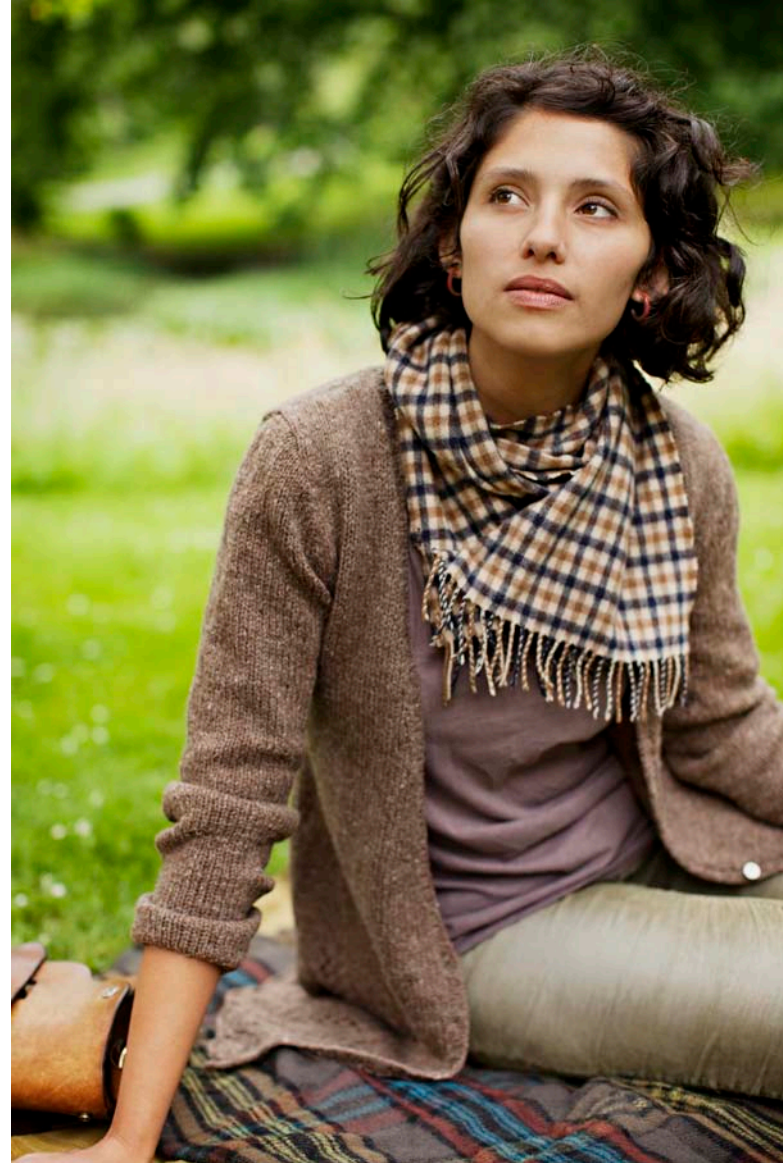
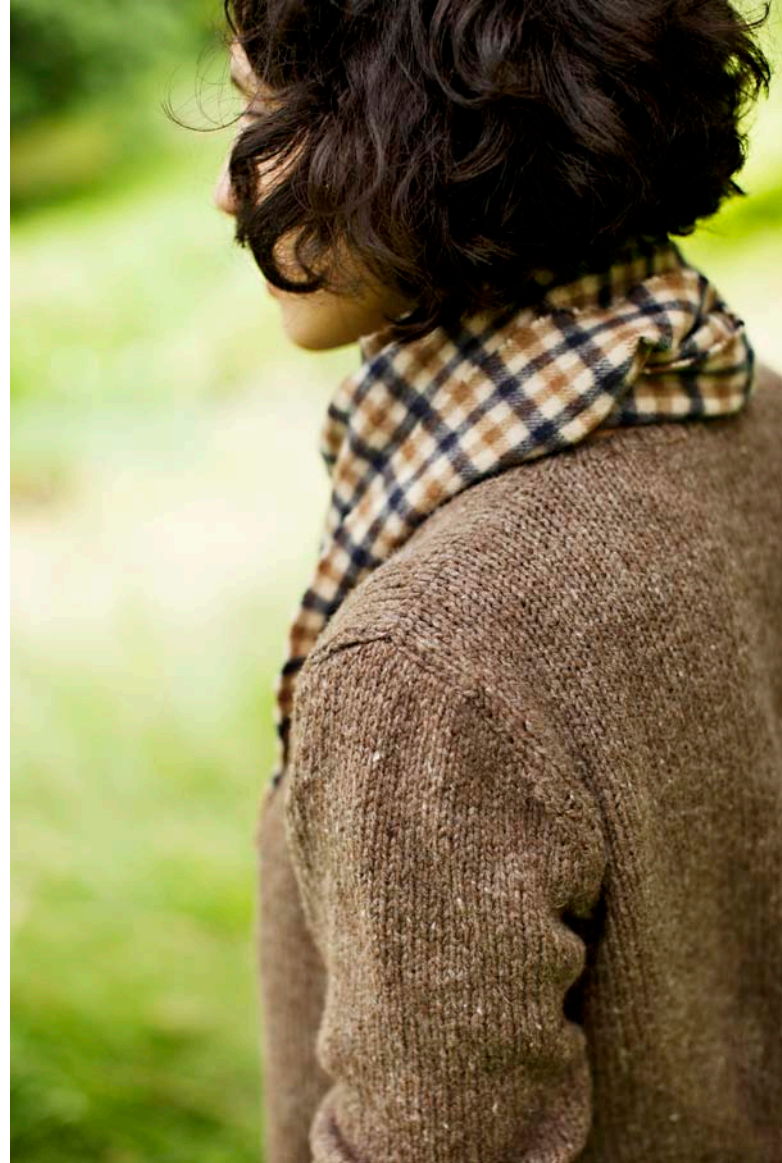
designed by Carrie Bostick Hoge





HOURGLASS THROW
allover cable & lace patterning, beautiful texture, ribbed
hems, garter selvedge // *hayloft*
three sizes: baby blanket, medium throw or large coverlet

designed by Anne Hanson



PERRY CARDIGAN
relaxed fit, lace detailing, deep v-neck, four-
piece construction, set-in sleeves // nest
designed by Michele Wang



ST. LÉGER HAT
three-color garter stitch, slipped stitch cables,
latvian braid, 1x1 ribbed hems, short & long
version available // *sweatshirt, woodsmoke, nest*
adult small (medium, large) versions included

designed by Mary Joy Gumayagay



ST. LÉGER COWL
three-color garter stitch, slipped stitch
cables, latvian braid, 1x1 ribbed hems //
sweatshirt, woodsmoke, nest
short/long versions included

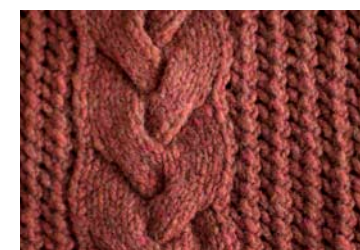
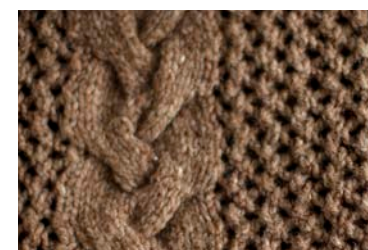
designed by Mary Joy Gumayagay



ALLEGHENY
seamless sweater dress, circular knit,
top-down construction, decorative
belt, ribbed waistback, ribbed turtle
neck, cable detailing // *nest*

designed by Thea Coleman





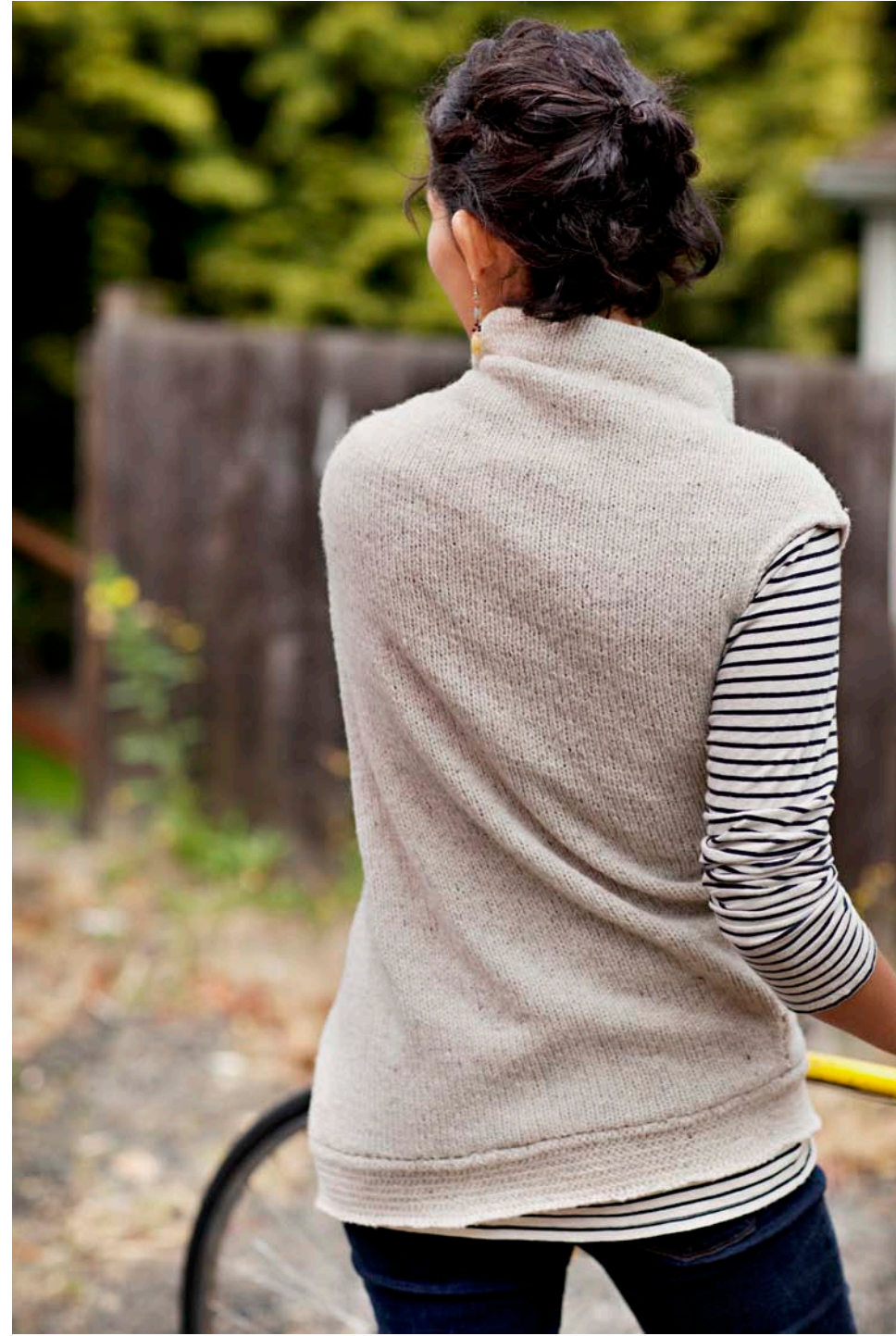
QUINNIPIAC COWL
large braided cable, 2 variations of lace mesh provided, turned hems with shadow rib motif // nest (left), wool socks (right)

designed by Leila Raabe

CYKLON

spiraling shell, diagonal gathers, funnel
neck, velvet ribbon facings, herringbone
stitch hem // *fossil*

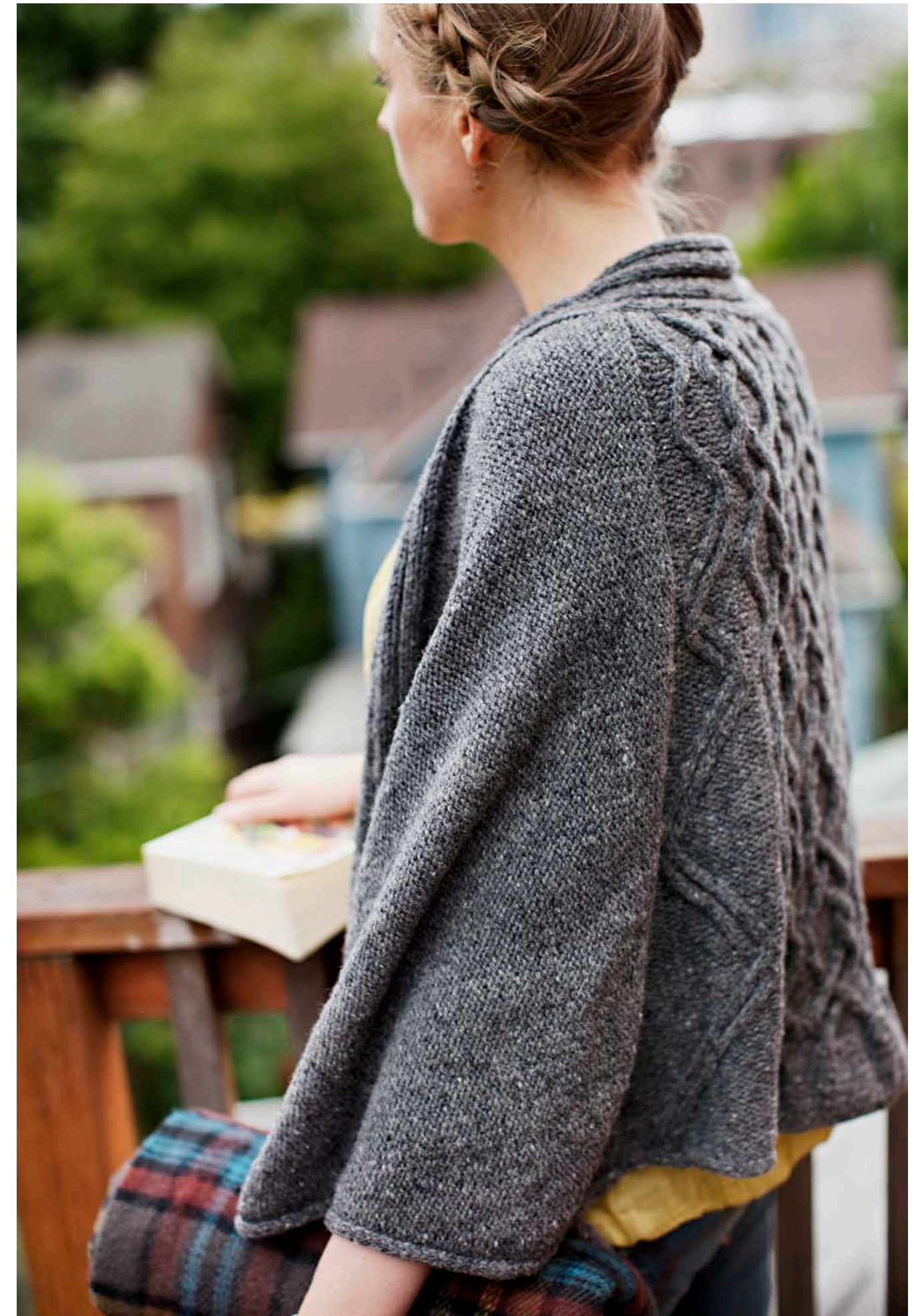
designed by Alison Brookbanks

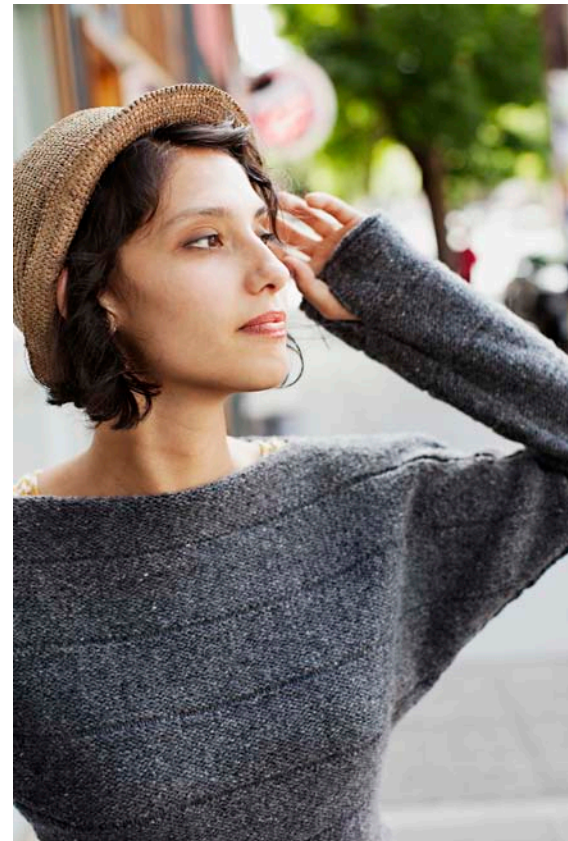




SERAPHINE WRAP
three-piece construction, sculptural
cabled back, reverse stockinette wings,
ribbed collar, i-cord trim, luxurious
drape, warm & light // *soot*

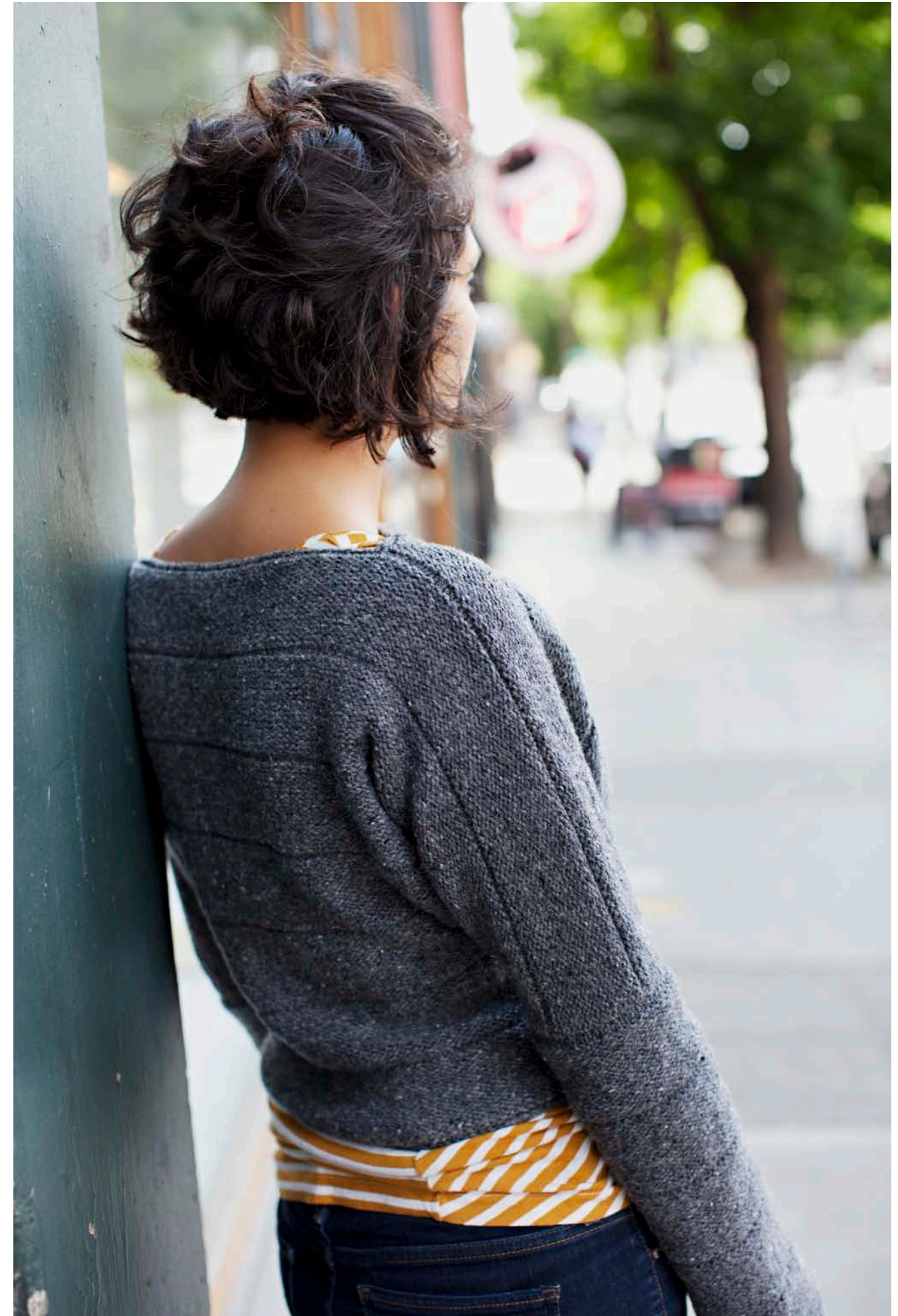
designed by Lucy Sweetland





HOLL DOLMAN
wide welted stripe, batwing
shaping, 3-piece construction,
optional thumbhole, sleeveless
variation included // soot

designed by Kirsten Johnstone





LEVENWICK CARDIGAN
asymmetrical open-front with old shale
lace detailing, reverse stockinette body,
compound raglan, top-down construction,
three-quarter sleeve, patch pocket, i-cord
cuff & hem, high lace collar // *hayloft*

designed by Gudrun Johnston

WOOL PEOPLE



ALISON BROOKBANKS

Under the banner of 6.5st, Alison creates in many forms - photography, sewn pieces and knitwear design - always manipulating fibres in some way.

Based in Sydney, Australia, she balances her creative work with motherhood and private architectural commissions. Follow Alison at www.sixandahalfstitches.typepad.com



OLGA BURAYA-KEFELIAN

Having learned to knit at her mother's knee, Olga's love of design began at a very young age. Seeking inspiration from industrial and architectural sources, she strives to translate those experiences through her work with knitwear.

Author of *Ori Ami Knits: Fiber Geometry*, Olga resides in Japan where she designs her own line of garments and accessories. www.olgajazzy.blogspot.com



CARRIE BOSTICK HOGE

Carrie lives in Maine with her husband and baby girl. She works as Art Director for Quince & Company during the week and plays in her backyard studio for Madder on the weekends.

Find more of Carrie's beautiful work on her blog: www.swatchdiaries.blogspot.com



GUDRUN JOHNSTON

Gudrun is a Scottish knitwear designer from the Shetland Islands. Her work often incorporates traditional Shetland techniques and motifs, featuring these timeless design elements in a contemporary context.

See more from Gudrun at www.theshetlandtrader.com



KIRSTEN JOHNSTONE

Kirsten is a Melbourne, Australia-based Architect who uses the mediums of built form and interior space to create refined designs. She also uses yarn, fabric and photography to explore her modern aesthetic on a smaller scale.

She has an eye for flattering forms that are deceptively simple yet frequently transformable. www.assemblage.typepad.com



LEILA RAABE

Leila is a member of the Brooklyn Tweed Team, currently living and working in Connecticut with her husband Josiah, three ridiculous cats, and a whole lot of wool.

Accustomed to operating behind the scenes, she is honored to have the chance to take part in the first volume of Wool People.



THEA COLEMAN

After leaving a corporate career in advertising to raise her daughters, Thea began experimenting with knitwear design and has never looked back.

She now designs her own line of garments for her brand Baby Cocktails in the greater Boston area, where she lives with her husband and two girls. Find more of her work at www.babycocktails.blogspot.com



WHITNEY GEGG-HARRISON

Whitney learned to knit at the age of 13, using two pencils and a shoelace. When she discovered the wonders of wool, there was no turning back.

She lives in Western New York with her husband and three kitties, where she studies language and cognition (when not daydreaming about sweaters). www.whitknits.wordpress.com



MARY JOY GUMAYAGAY

Mary Joy loses hats with unsettling frequency, almost always at a climbing area. She vows never to lose this set (see *St. Léger*).

She is a Southern California-based freelance graphic designer and maintains an online presence at www.indus3ous.com



ANNE HANSON

A lifelong knitter with a background in fashion and graphic design, Anne began designing knitwear and accessories in the 1970s. She is the owner and designer behind Knitspot (www.knitspot.com) where she houses her elegant design collection.

Anne lives and works in Ohio with David, who loves wool too.



LUCY SWEETLAND

Lucy Sweetland is a Pennsylvania-based knitwear designer. She has a great affinity for wool fabrics and cabled textures.

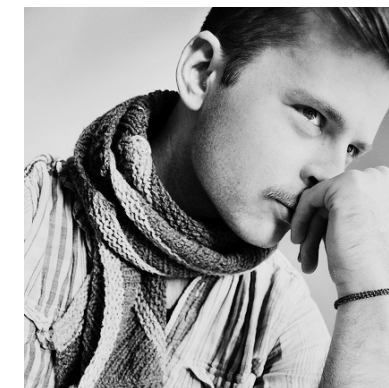
Follow Lucy's work at her website: www.ablackpepper.com



MICHELE WANG

New York City-based designer Michele Wang often finds herself thinking about the balance between comfort and trend in her work. Her garments have been featured in Vogue Knitting.

Keep up with Michele on her blog at www.knittingiskneato.blogspot.com



STEPHEN WEST

Tulsa-born designer Stephen West, also known as Westknits, is well known for his colorful, architectural and highly knitable patterns.

Stephen lives in Amsterdam where he studies Choreography at the School for New Dance Development and distributes his own series of popular self-published pattern collections. See more of Stephen's work at www.westknits.com



ALEXIS WINSLOW

Alexis is a Brooklyn-based printed textile designer, specializing in children's fabrics. You can find more of her work, writing, and videos at www.knitdarling.com

We love her bold use of graphic, geometric patterns. Her vintage-inspired designs make us nostalgic for cozy knitwear of days gone by.

CATALOG

CLICK ANY THUMBNAIL IMAGE TO PURCHASE PATTERN ON THE WEB

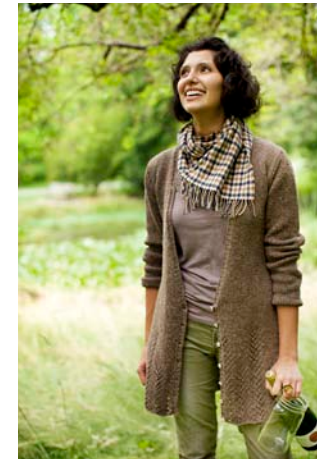


CYKLON

by Alison Brookbanks

Blocked garment at bust:
33 (35½, 38)"

Pattern PDF \$6.50



PERRY

by Michele Wang

Blocked garment at bust:
34 (38, 42, 46, 50)"

Pattern PDF \$6.50



SHIPYARD MITTENS

by Carrie Bostick Hoge

Two sizes provided:
7½ (8½)" circumference at widest point of hand

Pattern PDF \$6.00

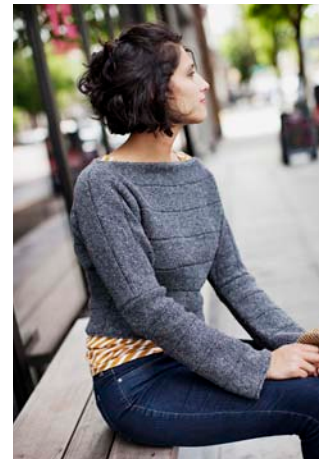


ACADIA

by Carrie Bostick Hoge

Blocked garment at bust:
32¾ (37¼, 41¼, 45¾, 50¾)"

Pattern PDF \$6.50



HOLL

by Kirsten Johnstone

To fit bust:
32 (34, 36, 38, 40)"

Pattern PDF \$6.50



QUINNIPIAC

by Leila Raabe

Blocked dimensions:
11½" height, 24" circumference at base

Pattern PDF \$6.00



ST. LÉGER

by Mary Joy Gumayagay

Hat: 17" circumference; 7½ (8, 8½)" height
Cowl: 20" circumference; 8¼ (10½)" height

Pattern PDF \$6.00

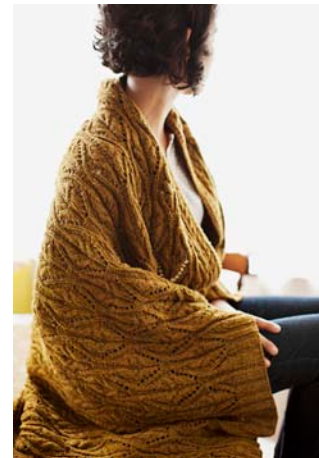


ALLEGHENY

by Thea Coleman

Blocked garment at bust:
(34¾, 35¾, 37¾, 41½) (43¼, 44¼, 47) (48, 50, 51¾)"

Pattern PDF \$6.50



HOURLASS

by Anne Hanson

Sizes include:
Baby Blanket, Medium Throw, Large Coverlet

Pattern PDF \$6.00



SERAPHINE

by Lucy Sweetland

One size:
92" wingspan, 23" height at center back

Pattern PDF \$6.50



SULLIVAN

by Whitney Gegg-Harrison

Blocked garment at chest:
(32, 34¾, 37¼, 40) (42¾, 45¼, 48) (50¾, 53¼, 56)"

Pattern PDF \$6.50



CALDWELL

by Stephen West

Blocked garment at chest:
39½ (42¾, 47, 51¼, 55½)"

Pattern PDF \$6.50



LEVENWICK

by Gudrun Johnston

Blocked garment at chest:
31¼ (34½, 37, 40½, 43, 46¼, 48¾)"

Pattern PDF \$6.50



SHADOW

by Olga Buraya-Kefelian

Blocked garment at chest:
34½ (36½, 39, 41, 42½, 44½, 47, 48½)"

Pattern PDF \$6.50



VEGA

by Alexis Winslow

Two sizes:
24 (26)" circumference at widest point; 8 (9¼)" height

Pattern PDF \$6.50



SOOT



SWEATSHIRT



FOSSIL



WOODSMOKE



NEST



PUMPERNICKEL



EMBERS



WOOL SOCKS



LONG JOHNS



HOMEMADE JAM



THISTLE



HAYLOFT



SAP



TENT



BUTTON JAR



FADED QUILT



ALMANAC

SHELTER

100% TARGHEE-COLUMBIA WOOL
GROWN IN WYOMING, SPUN IN NEW HAMPSHIRE

SHELTER is a worsted weight, woolen-spun yarn that is grown, processed and spun in the USA. Our yarn comes in 17 hand-designed heather blends that make even the simplest fabrics sing.

140 yards // 4 to 5½ stitches per inch // 50g

[CLICK HERE TO VIEW OR PURCHASE SHELTER ONLINE](#)

WWW.BROOKLYNTWEED.NET