



wool people 6
look book





wool people 6
late fall 2013



outpost

I fell in love with seamless sweater knitting shortly after I learned to knit. Like so many, I was entranced by Elizabeth Zimmermann’s circular credo. Knitting in the round and joining garment pieces together as they are created made so much sense to me, highlighting the architectural characteristics of sweater making. Though I later learned to appreciate the equally important yet different qualities of seamed garments that require finishing and assembly, I’ve always retained a soft spot for seamless sweater knitting.

Last spring when I began working with this skillful group of designers, I asked them to keep the knitting process in mind when creating their garments. For many of them, that meant creating seamless (or virtually seamless) sweaters: garments that had a truly intuitive way of being worked.

If going seamless is your thing too, some compelling new designs await you among these pages. The Carpino (p. 14) and Rook (p.34) pullovers are not only circular, but also knit from the top down, allowing knitters to try their garment on as it is knit in order to customize sleeve and body lengths. The seamless Little Wave cardigan (p.10) features integrated saddle shoulder and shirt yoke shaping and includes versions for both men and women (I wore the men’s version for the majority of our shoot!). And if you’re the type of knitter that enjoys puzzles, Trestle (shown left) and Svalbard (p. 38) both take seamless knitting and turn it on its head to create uniquely constructed garments that are sure to get noticed (and not just by knitters).

Our creative team took a September trek to a cottage in New York’s Shawangunk Mountains (delightfully referred to by locals as “the Gunks”) to photograph this collection – our sixth installment in the ongoing Wool People guest designer series.

We really hope you enjoy it!

All my very best,

Jared Flood



collection





little wave // for her
by gudrun johnston



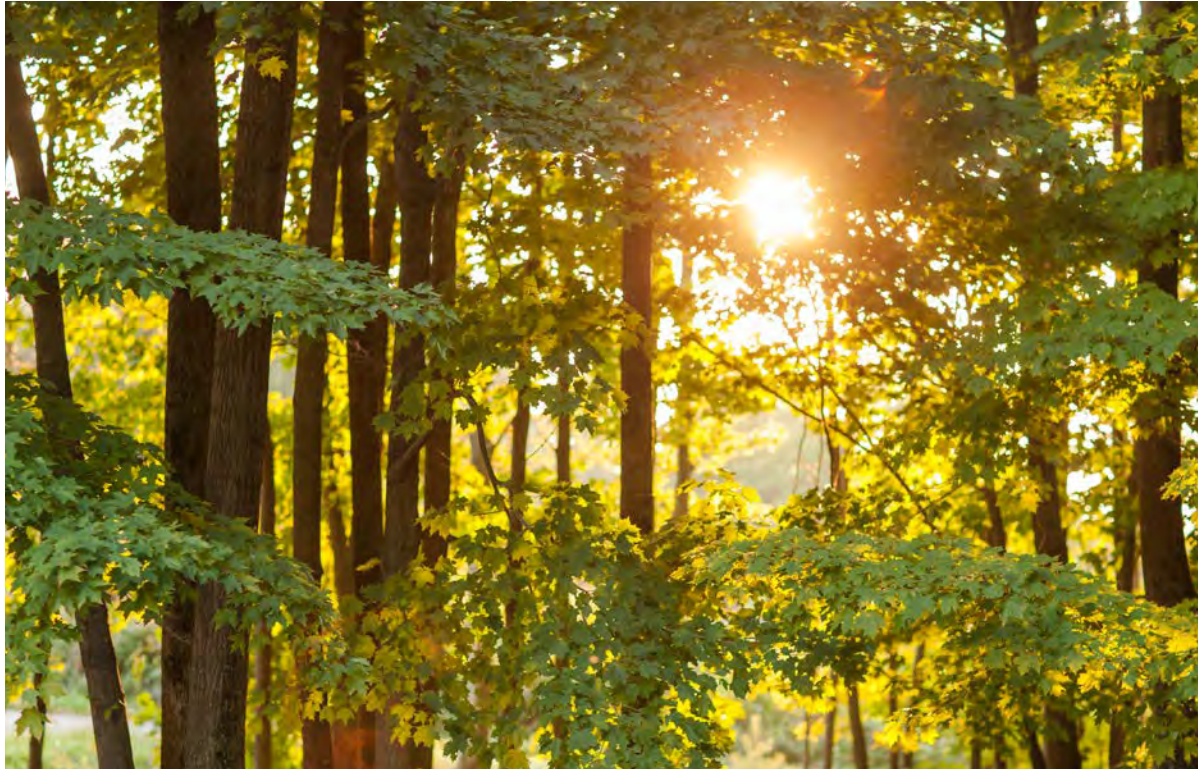


little wave // for him

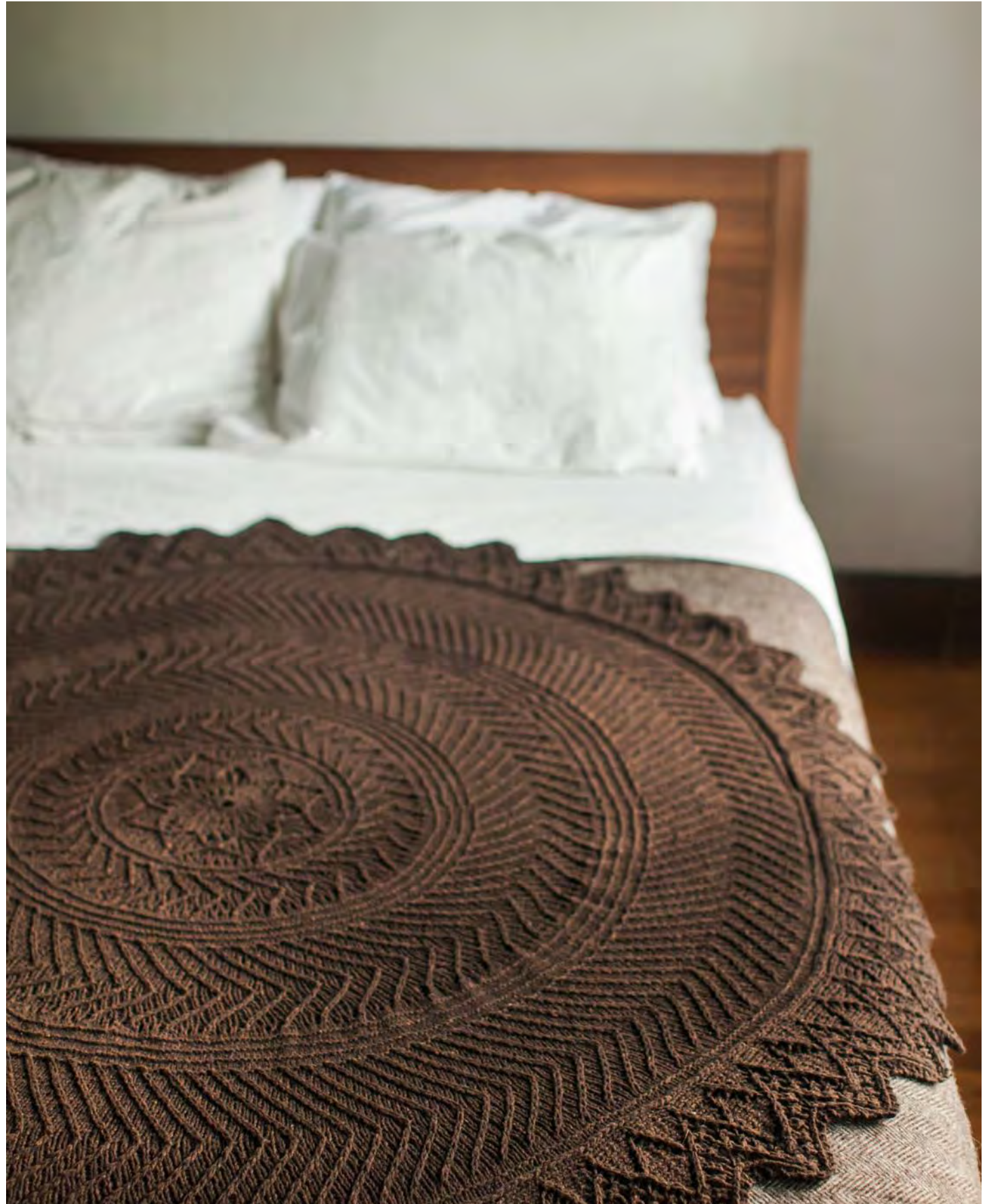
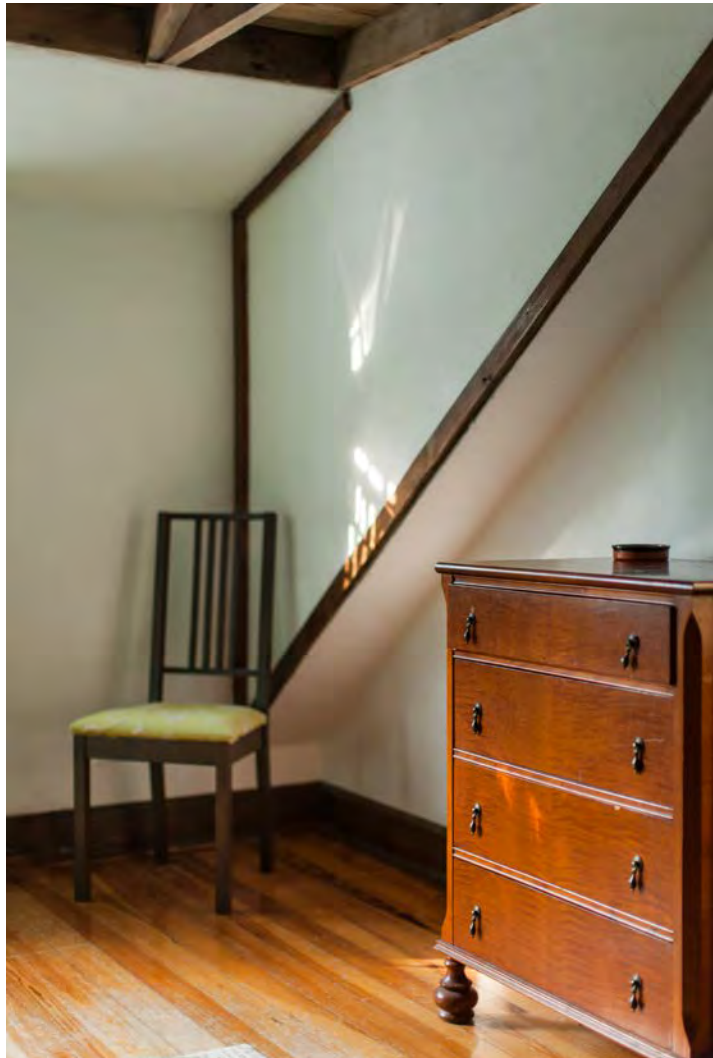
by gudrun johnston

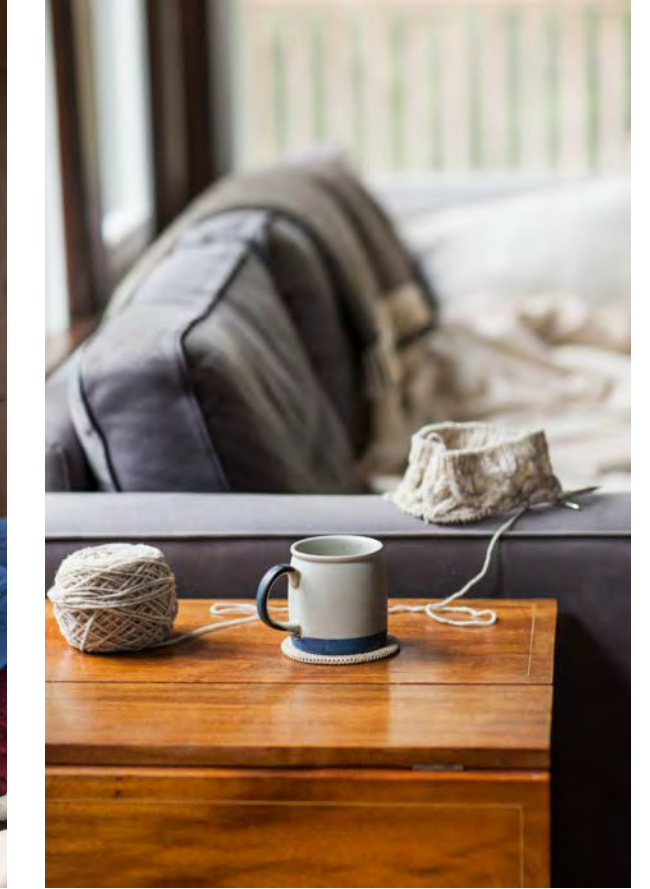


carpino
by carol feller



tree rings
by andrea rangel







greenwood
by ann-marie jackson



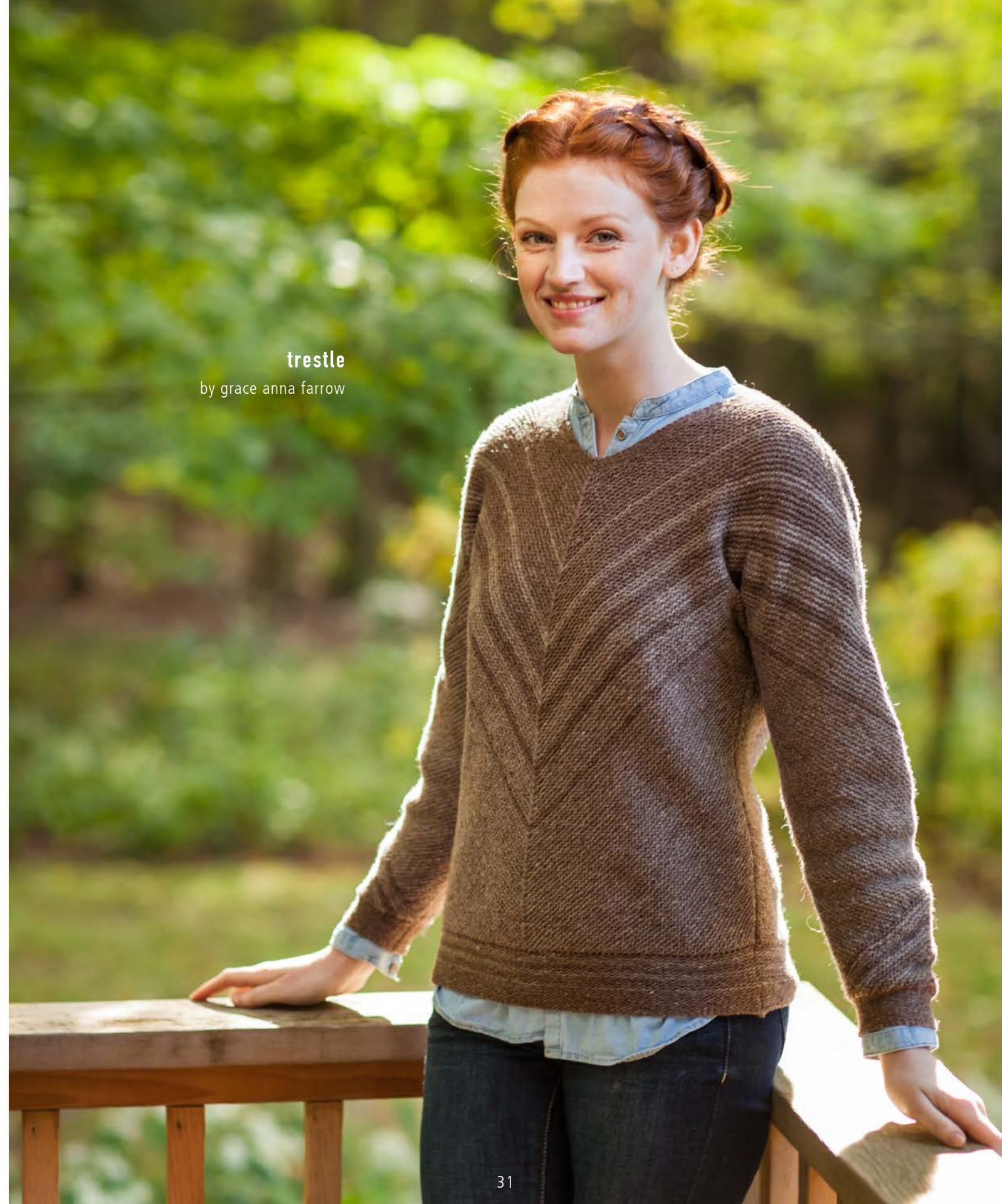




bough hat
by leila raabe



bough cowl
by leila raabe



trestle
by grace anna farrow



brigitte
by carrie hoge







rook
by kyoko nakayoshi



svalbard
by bristol ivy





ceridwen
by ann mccauley



persimmon
by amy christoffers







gentian
by irina dmitrieva



sundottir
by diana walla



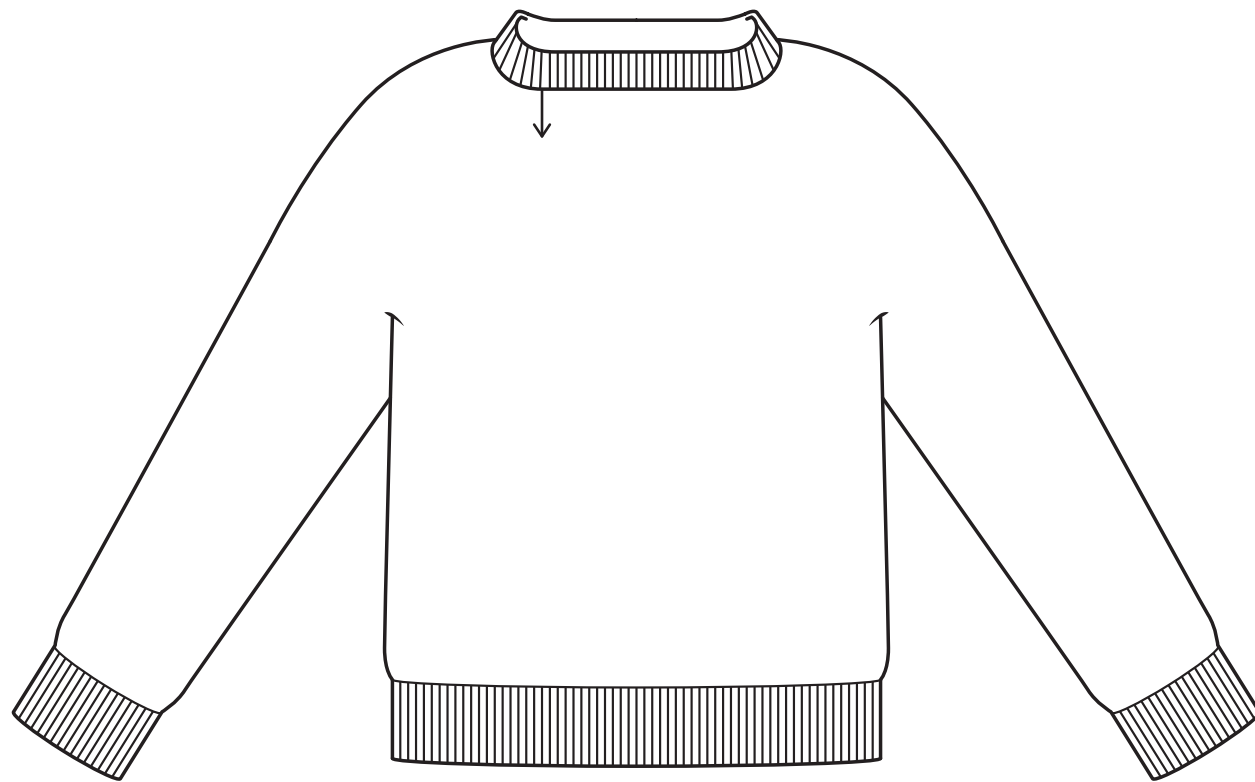




pattern blueprints

rook

by kyoko nakayoshi



finished dimensions

33½ (35¼, 38¾, 42¼, 46¾, 51¼)" circumference at bust

Intended Ease: + 2-3"

Sample shown is size 35¼" with + 2¼" ease on model

materials

7 (8, 8, 9, 10, 11) skeins of Brooklyn Tweed *Shelter*
Photographed in color *Woodsmoke*

gauge

18 stitches & 28 rounds = 4" in stockinette stitch with Size A needle(s), after blocking

17-stitch panel from Sleeve Chart measures 3" wide after blocking

39-stitch panel from Body Chart measures 6½" wide after blocking

design details

- seamless round yoke construction
- knit circularly from the top down
- cabled panels on front and back
- cable insertion along sleeve
- 1x1 ribbed hem and cuffs; doubled neckband
- back neck is shaped using short rows
- crew neckline



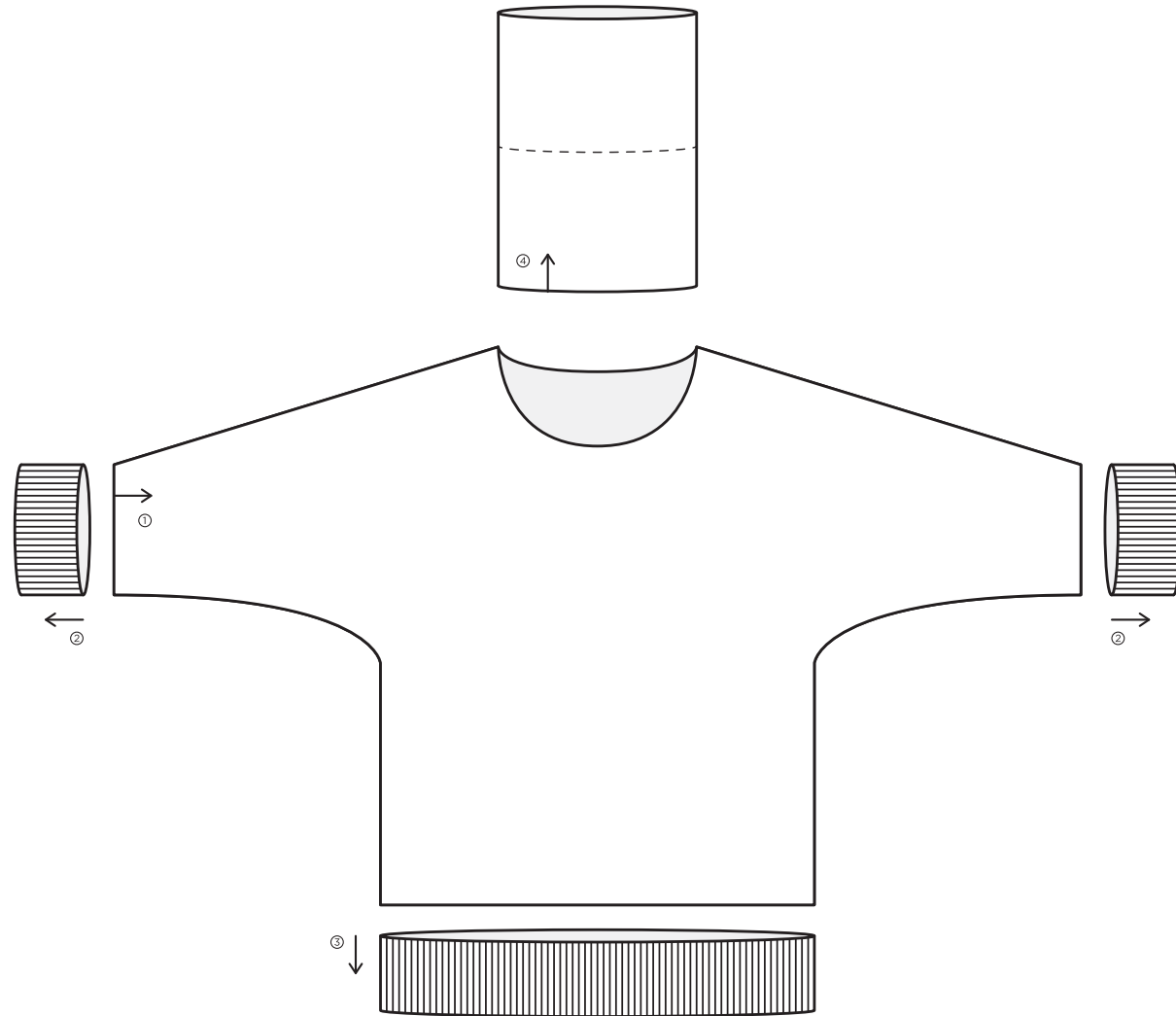
[purchase pattern pdf](#)



[more info](#)

greenwood

by ann-marie jackson



finished dimensions

34½ (35½, 39, 42, 46, 50½, 55, 59½)"

circumference at bust

Intended Ease: + 1½-3"

Sample shown is size 35½" with + 1½" ease on model

materials

8 (8, 8, 9, 10, 11, 12, 13) skeins of Brooklyn Tweed *Shelter*

Photographed in color *Homemade Jam*

gauge

17 stitches & 26 rows = 4" in Reverse Stockinette Stripe with Size A needle(s), after blocking

design details

- two-piece construction (back and front)
- knit flat from side to side
- allover textured stripe
- funnel neck
- dolman sleeve shaping
- hem and cuffs picked up and worked circularly from assembled body in 1x1 ribbing



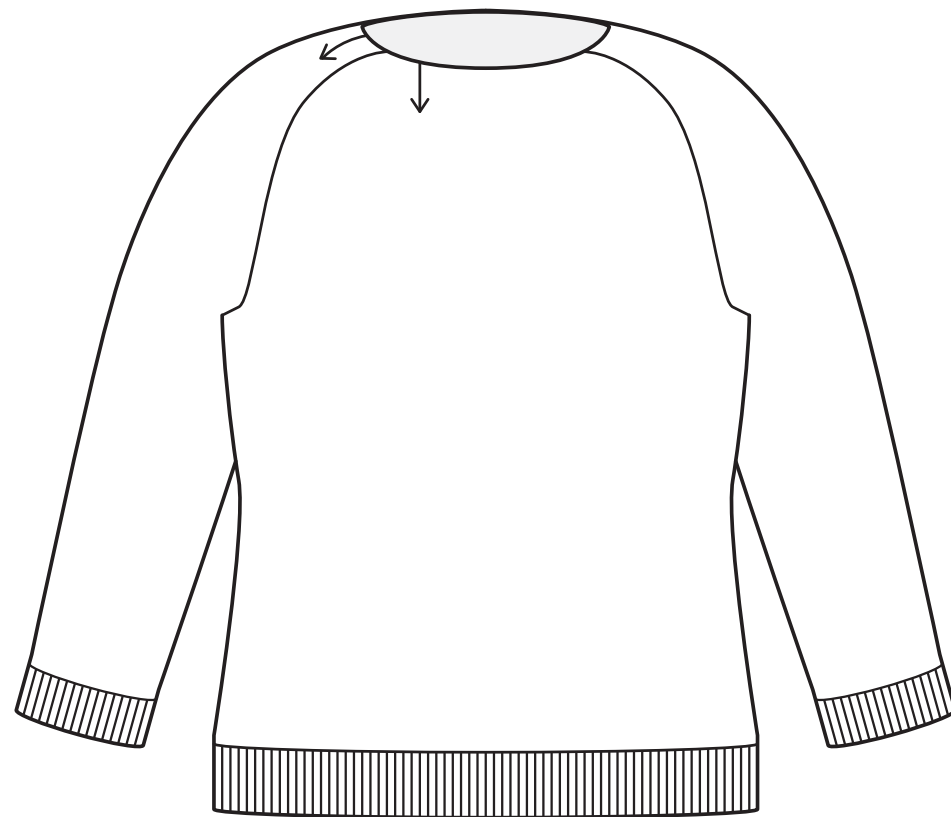
purchase pattern pdf



more info

carpino

by carol feller



finished dimensions

33¼ (35½, 39, 42¼, 44½, 48, 50¼, 53¾)"

circumference at bust

Intended Ease: + 1-2½"

Sample shown is size 35½" with + 2½" ease on model

materials

5 (5, 5, 5, 6, 6, 6, 7) skeins of Brooklyn Tweed *Loft*
Photographed in color *Hayloft*

gauge

23 stitches & 36 rounds = 4" in stockinette stitch, after blocking

21 stitches & 36 rounds = 4" in Lace Pattern, after blocking

design details

- seamless raglan construction
- knit circularly from the top down
- compound raglan shaping forms slightly saddled sleeve cap
- allover openwork pattern on front panel
- three-quarter sleeves
- 1x1 ribbing on cuffs and hem
- wide crew neckline



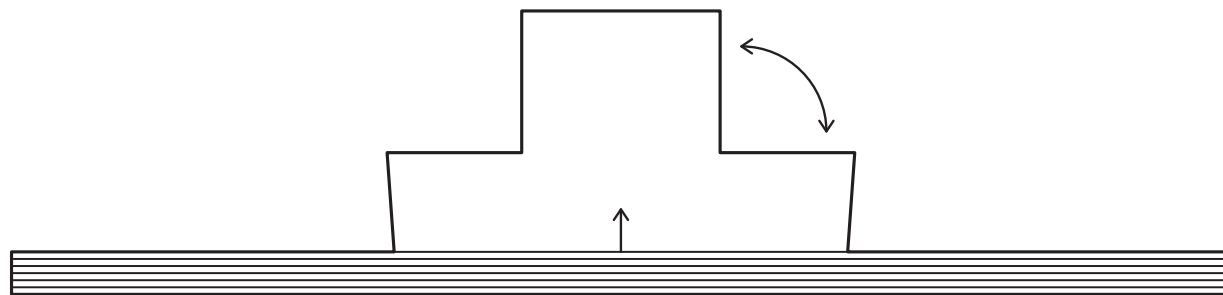
[purchase pattern pdf](#)



[more info](#)

brigitte

by carrie hoge



finished dimensions

16" width at brim

13½" strap length

8½" depth

To fit average woman's head size of 20-22"

materials

180 yards of worsted weight wool yarn

2 skeins of Brooklyn Tweed *Shelter*

Photographed in color *Soot*

gauge

19 stitches & 36 rows = 4" in garter stitch with Size

A needle(s), after blocking (Bonnet Body)

20 stitches & 40 rows = 4" in garter stitch with Size

B needle(s), after blocking (Straps)

42-stitch panel from Chart measures 7" wide after blocking

design details

- single-piece construction
- knit flat
- two small seams for finishing
- garter stitch band, tassels & side panels
- braided cable central panel



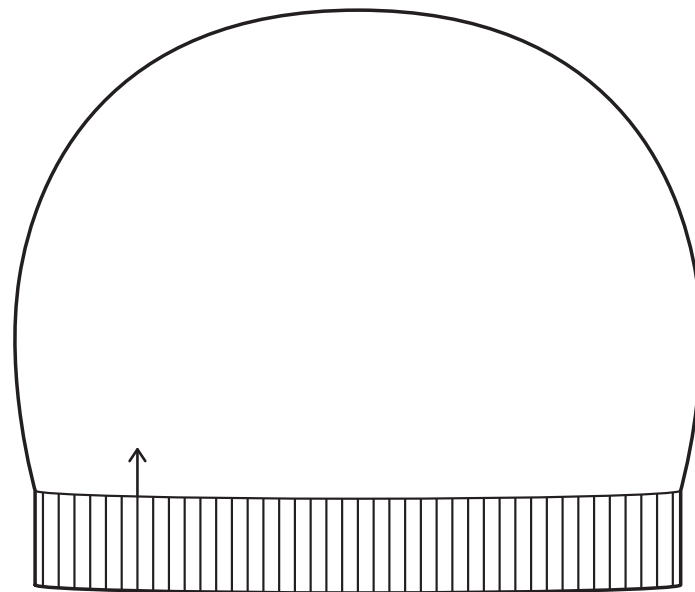
[purchase pattern pdf](#)



[more info](#)

gentian

by irina dmitrieva



finished dimensions

18" circumference at brim

21" circumference at main body of hat

9" height

To comfortably fit average adult head sizes of 21-24"

materials

2 skeins of Brooklyn Tweed *Shelter*

Photographed in color *Almanac*

gauge

25 stitches & 27 rounds = 4" in Cable Pattern with
Size A needle(s), after blocking

22-stitch panel from Cable Pattern Chart measures
3½" wide, with Size A needle(s), after blocking

design details

- seamless construction
- knit circularly from the bottom up
- cable and garter vertical motifs flow directly from
2x2 ribbed brim
- integrated crown shaping



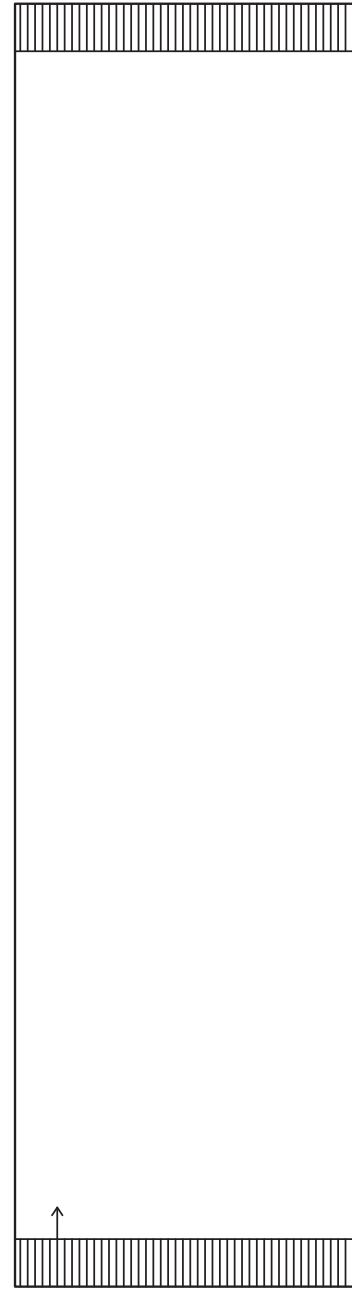
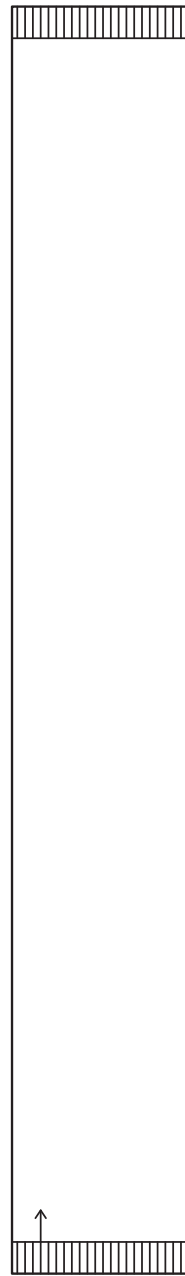
[purchase pattern pdf](#)



[more info](#)

ceridwen

by ann mccauley



finished dimensions

Scarf (Wrap)

8¼ (16¼)" wide

60 (60¾)" long

materials

4 (8) skeins of Brooklyn Tweed *Shelter*

Photographed in colors *Long Johns* (Scarf) and

Artifact (Wrap)

gauge

24 stitches & 30 rows = 4" in Corded Ribbing, after blocking

25 stitches & 30 rows = 4" in Cable & Cord pattern from Chart, after blocking

design details

- single-piece construction
- knit flat from end to end
- two sizes provided
- vertical braided cable and corded rib motifs
- corded rib hem



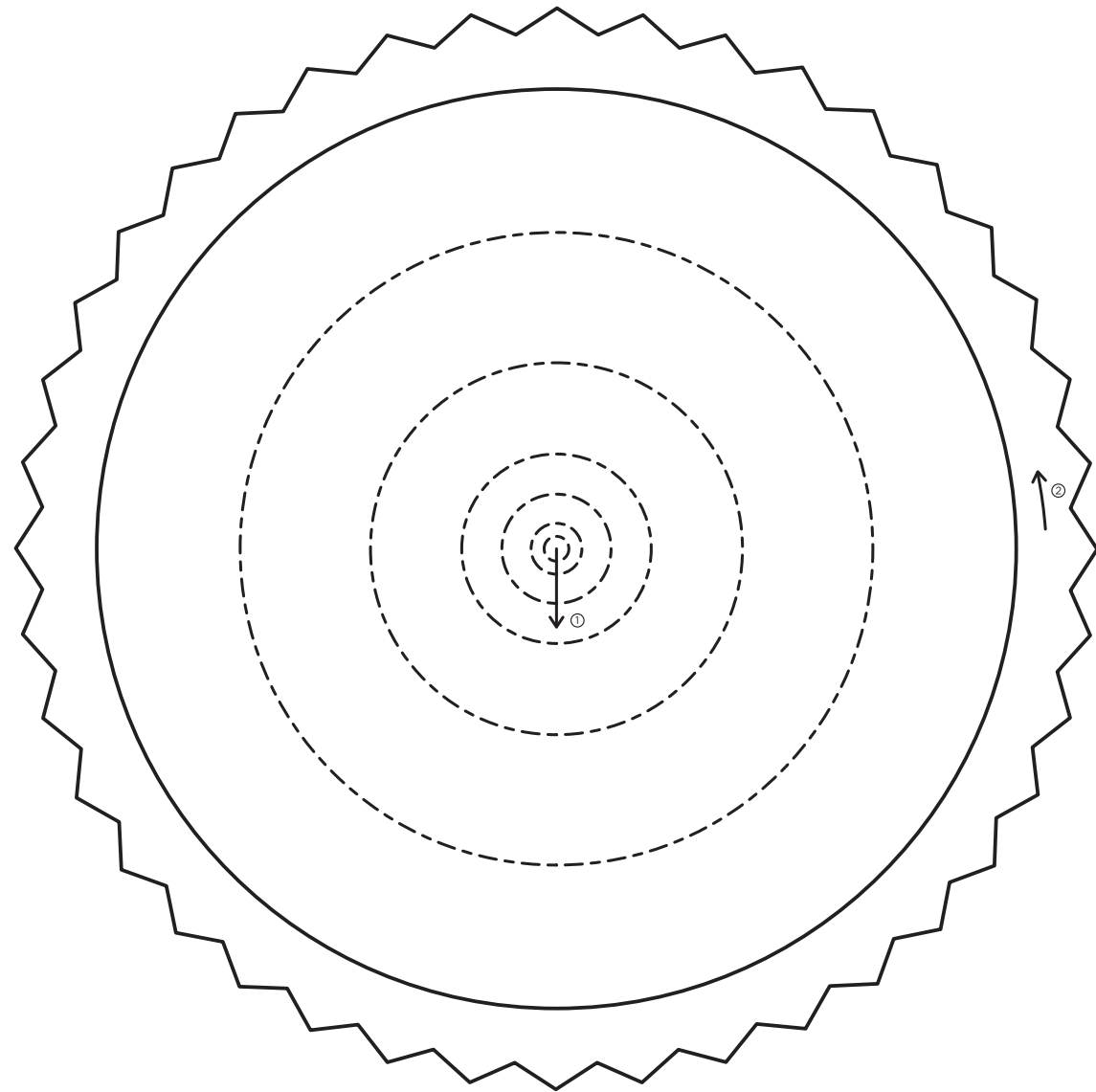
[purchase pattern pdf](#)



[more info](#)

tree rings

by andrea rangel



finished dimensions

62" diameter

materials

13 skeins of Brooklyn Tweed *Shelter*

Photographed in color *Pumpnickel*

gauge

18 stitches & 26 rounds = 4" in welted stockinette stitch with Size A needle(s), after blocking

18 stitches & 28 rounds = 4" in Left Twist or Right Twist Chart with Size B needle(s), after blocking

18 stitches & 21 rounds = 4" in Center Lace Chart with Size B needle(s), after blocking

14½ stitches & 25 rows = 4" in Lace Edging Chart with Size A needle(s), after blocking

design details

- single-piece pi shawl construction
- worked circularly from the center out
- concentric rings of increases (indicated by dotted lines on schematic)
- knitted-on lace edging trims piece in place of a traditional bind off
- all-over horizontal chevron and welt patterning
- central star motif



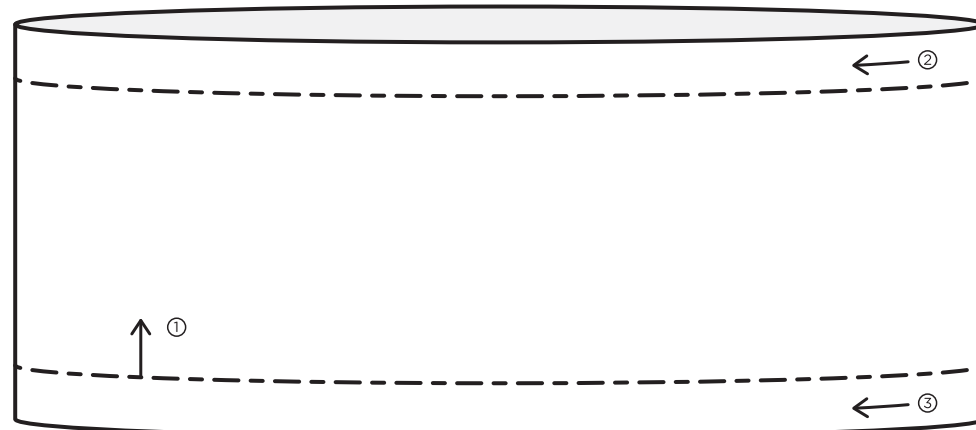
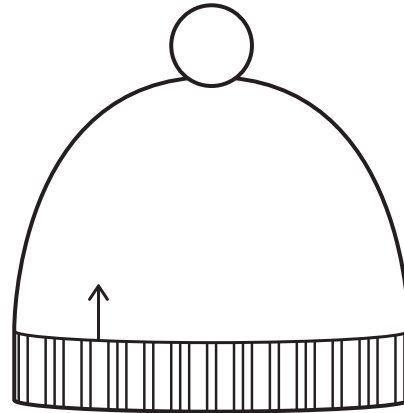
purchase pattern pdf



more info

bough

by leila raabe



finished dimensions

Cowl: 55" circumference; 11" height

Hat: 22½" circumference (to comfortably fit average adult head sizes 22-24"); 8¾" height

materials

2 skeins Color A (hat) and 5 skeins Color B (cowl) of Brooklyn Tweed *Shelter*

Hat photographed (with and without pom-pom) in color *Birdbook*

Cowl photographed in color *Woodsmoke*

gauge

22½ stitches & 32 rounds = 4" in Bough Motif (Cowl) with Size A needle(s), after blocking

22 stitches & 34 rounds = 4" in Two-and-One Twisted Ribbing with Size B needle(s), after blocking

18 stitches & 26 rounds = 4" in stockinette stitch with Size A needle(s), after blocking

Note: Stockinette stitch is not used in the pattern; gauge is for reference only

design details

Hat

- seamless construction
- knit in the round from the bottom up
- optional pom-pom
- "tree of life" and cable motifs
- two-and-one twisted rib brim

Cowl

- seamless construction
- body knit in the round, attached cabled edgings knit sideways
- "tree of life" patterning on body of cowl
- large loop can be double wrapped around neck



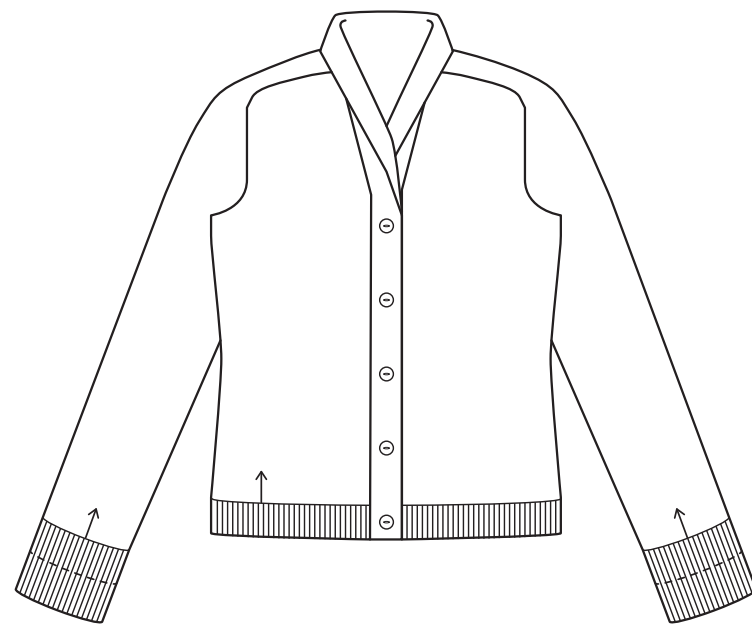
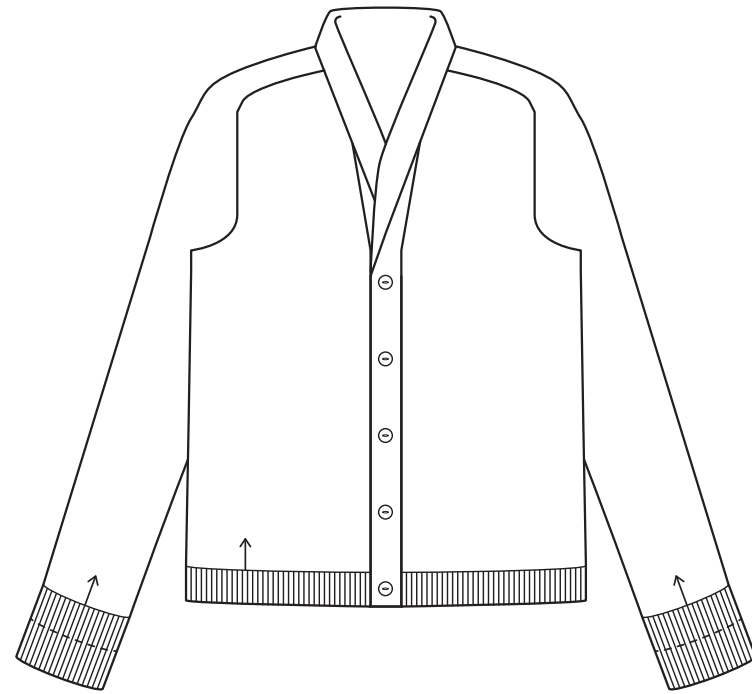
[purchase pattern pdf](#)



[more info](#)

little wave

by gudrun johnston



finished dimensions

(Women's) [Men's]

(31¾, 36½, 41¼, 46, 51, 55¾) [31¾, 36½, 41¼, 46, 51, 55¾]" finished circumference at bust/chest (buttoned)

Intended Ease: + 1-4"

Women's Sample shown is size 36½" with + 2½" ease on model

Men's Sample shown is size 41¼"

materials

(8, 9, 11, 12, 13, 14) [9, 10, 11, 13, 14, 15] skeins of Brooklyn Tweed *Shelter*

Women's pullover photographed in *Embers*

Men's pullover photographed in *Cast Iron*

gauge

20 stitches & 28 rows = 4" in Little Wave Pattern with Size A needles, after blocking

19 stitches & 28 rows = 4" in garter stitch for Side Panels with Size A needles, after blocking

19 stitches & 28 rows = 4" in stockinette stitch with Size A needles, after blocking

19 stitches & 37 rows = 4" in garter stitch for Collar with Size A needles, after blocking

design details

- seamless construction
- body knit flat, sleeves knit in the round
- saddle shoulder yoke
- in-line pockets with i-cord trim
- allover "little wave" cable pattern on body
- stockinette sleeve
- garter stitch bands and shawl collar
- 1x1 ribbing on doubled cuffs and hem
- deep v-neckline



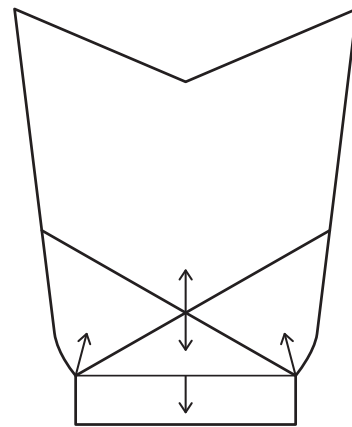
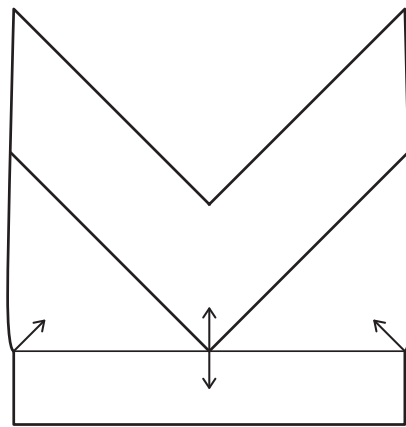
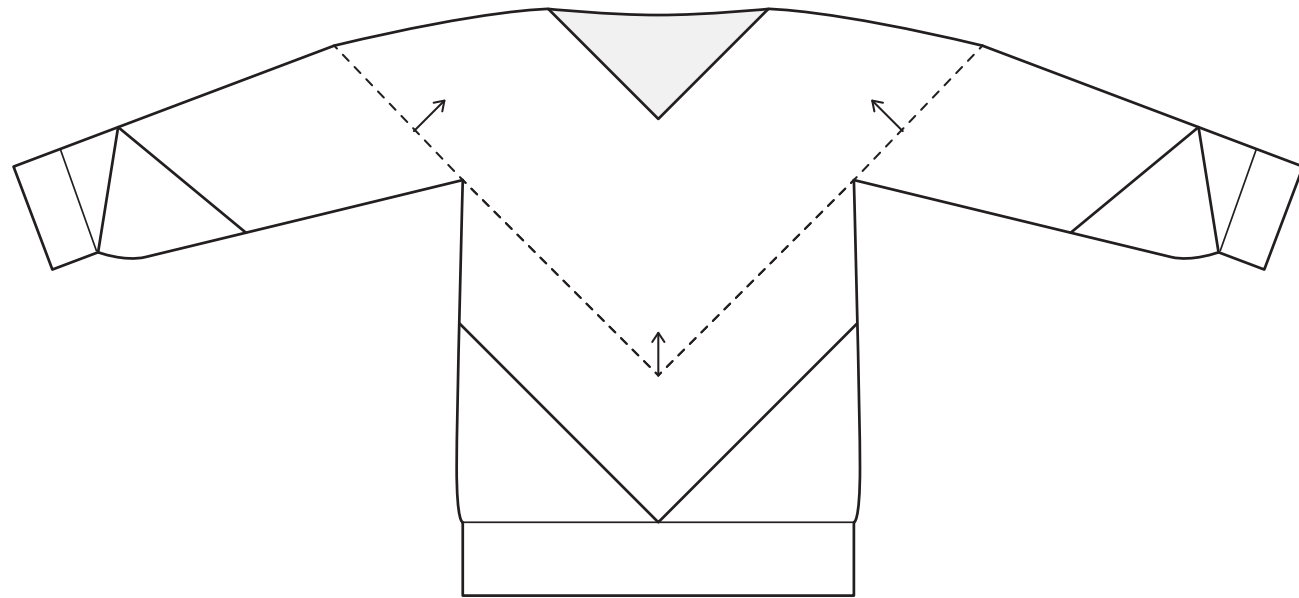
purchase pattern pdf



more info

trestle

by grace anna farrow



finished dimensions

34 (36, 38, 40, 42) (45, 46, 48, 49)" circumference at bust

Intended Ease: + 1–3"

Sample shown is size 36" with + 3" ease on model

materials

Brooklyn Tweed *Loft*:

5 (5, 6, 6, 6) (7, 7, 7, 7) skeins MC and 2 (2, 2, 3, 3)

(3, 3, 4, 4) skeins CC

Photographed in colors *Barn Owl* (MC) and *Nest* (CC)

gauge

24 stitches & 48 rows = 4" in garter stitch with Size A needle(s), after blocking

design details

- modular construction
- front, back and sleeves knit flat using modular/ triangular shaping to underarm
- sweater joined along dotted line and yoke worked in single flat pieces
- striping sequences highlight construction details of piece
- garter stitch cuffs and hem worked at a denser gauge than body fabric
- v-neckline



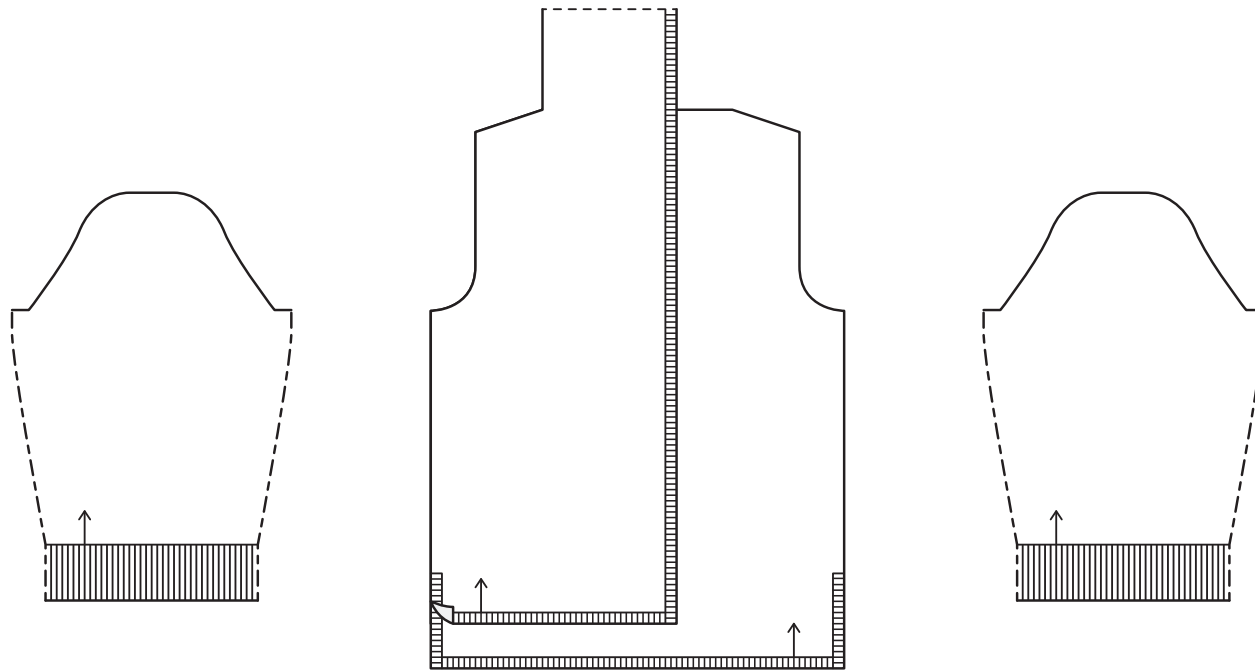
[purchase pattern pdf](#)



[more info](#)

persimmon

by amy christoffers



finished dimensions

32½ (36, 39½, 43, 46½, 50)" circumference at bust

Intended Ease: + 1-3"

Sample shown is size 36" with + 2" ease on model

materials

7 (7, 8, 8, 9, 10) skeins of Brooklyn Tweed *Shelter*

Photographed in color *Wool Socks*

gauge

18 stitches & 27 rows = 4" in stockinette stitch with

Size A needle(s), after blocking

design details

- 3-piece construction
- body worked flat; sleeves worked circularly to underarm, sleeve cap worked flat
- banded knit-purl texture patterns
- side vents
- elongated back hem
- thin 1x1 rib and garter stitch trims on body; ribbed sleeve cuff
- stockinette shawl collar can be worn up or folded back on itself



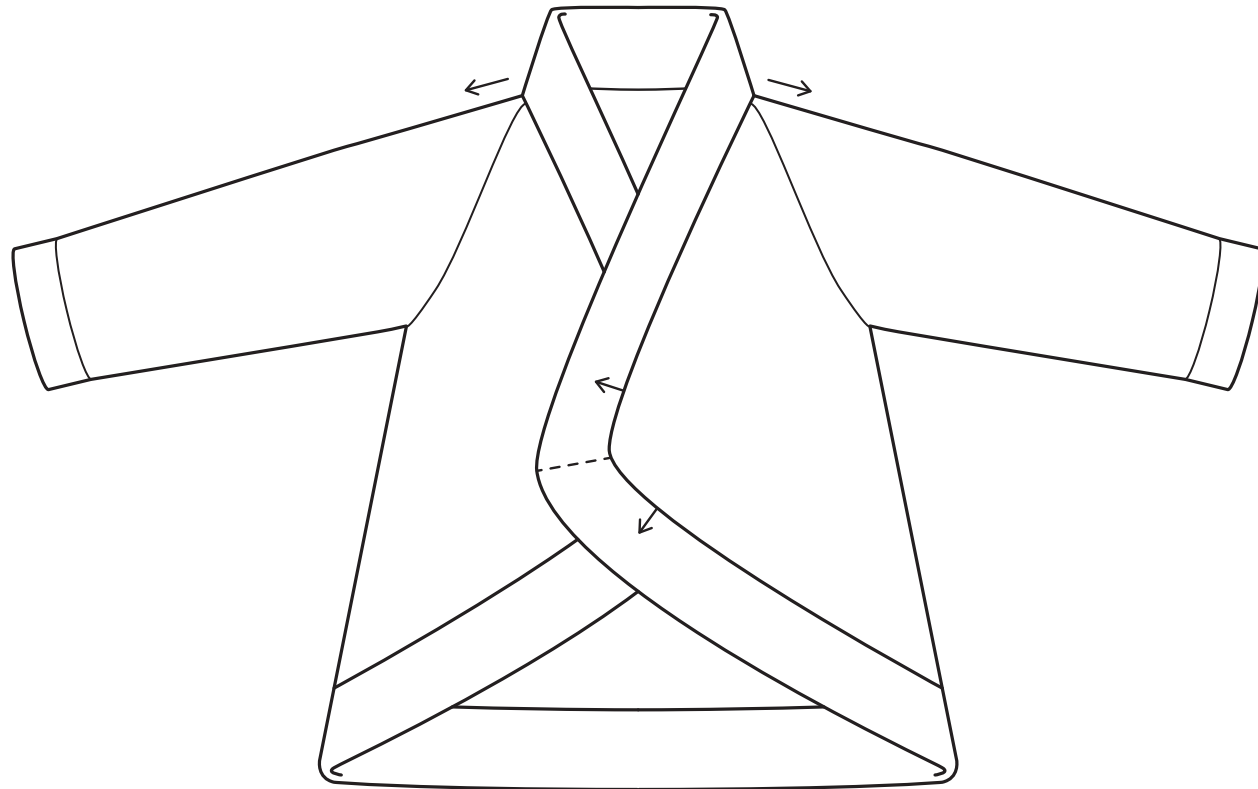
[purchase pattern pdf](#)



[more info](#)

svalbard

by bristol ivy



finished dimensions

38½ (42½, 45¾, 46½, 49¾, 53¾, 57)" circumference at bust (including bands, with Fronts open)

To fit approximate bust sizes: 30-32 (34-36, 36-38, 38-40, 42-44, 46-48, 50-52)"

Intended Ease: + 4-10"

Sample shown is 38½" with + 4½" ease on model

materials

8 (9, 10, 11, 12, 14, 15) skeins of Brooklyn Tweed *Shelter*

Photographed in color *Stormcloud*

gauge

20 stitches & 29 rows/rounds = 4" in Cartridge Rib with Size A needle(s), after blocking

design details

- single-piece construction
- knit flat from the top down; sleeves are knit circularly from underarm
- front pieces picked up and knit directly from front raglan edges to create drape-fronts
- ribbed band is picked up and knit circularly around cardigan opening, using mitered corners
- all-over cartridge rib
- chevron motif details on back and underarm gusset created through placement of increases
- three-quarter sleeves



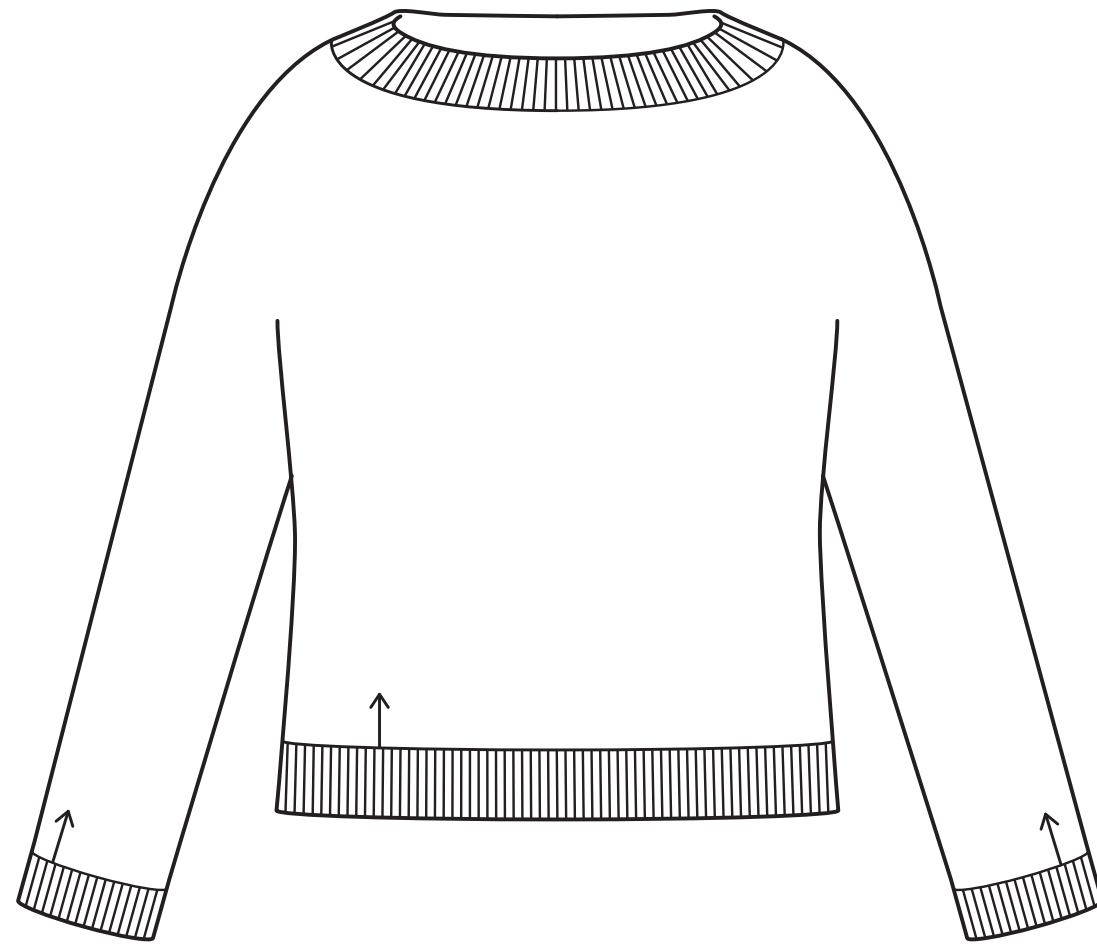
purchase pattern pdf



more info

sundottir

by dianna walla



finished dimensions

33 (35½, 37¼, 41, 45¼, 49)" circumference at bust

Intended Ease: + 0-2"

Sample shown is size 35½" with + 1½-2" ease on models

materials

Brooklyn Tweed *Shelter*:

6 (6, 7, 7, 8, 9) skeins C1 and 1 (1, 1, 1, 2, 2) skeins C2

Photographed in colors *Truffle Hunt* (C1) and *Fossil* (C2)

gauge

18 stitches & 24 rounds = 4" in single-color stockinette stitch with Size A needle(s), after blocking

18 stitches & 24 rounds = 4" in stranded pattern from Yoke Chart with Size C needle(s), after blocking

design details

- seamless construction
- knit circularly from the bottom up
- stranded colorwork section integrates decreases for round yoke shaping
- fitted
- hourglass shaping at waist
- wide crew neck
- 1x1 ribbed hem, cuffs and neckband



[purchase pattern pdf](#)



[more info](#)



about our yarns



Our wools are grown on the plains of Johnson County in northern Wyoming from the wool of the Targhee-Columbia sheep.

This blend combines the crimp, bounce and softness of Targhee fine wool with the body and strength of Columbia medium wool.

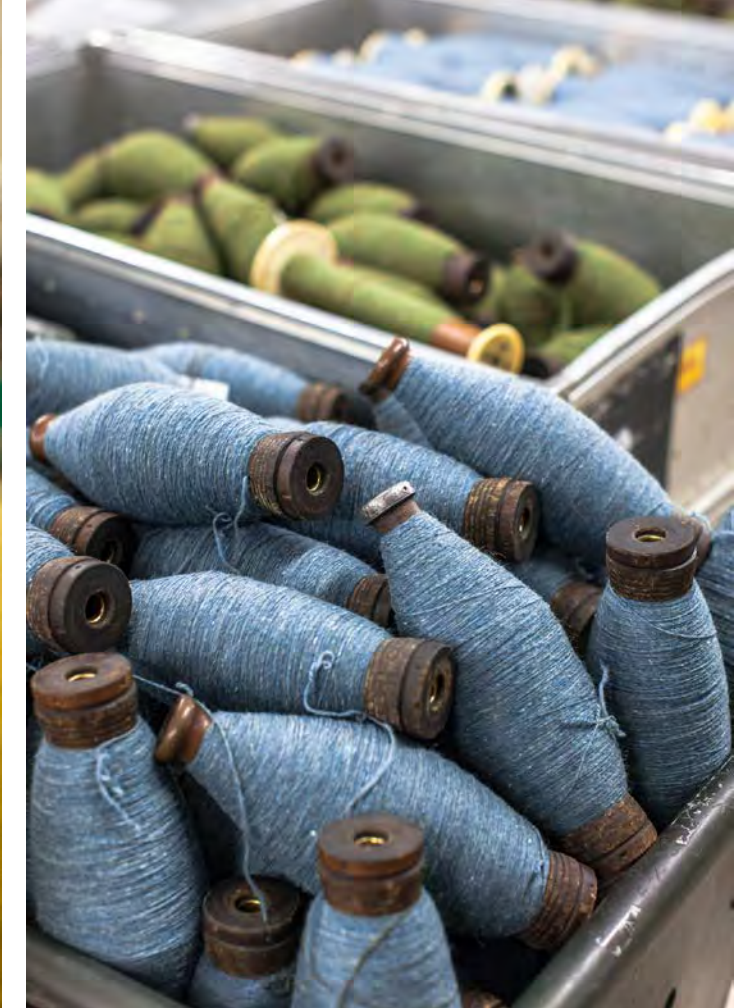
Yarn created from this wool enjoys the benefits of both: strength and endurance while remaining soft enough to wear comfortably.

Shown here: a handful of fresh wool immediately following shearing.





After scouring, the wool travels to beautiful Harrisville, New Hampshire. Woolen yarns have been spun in this brick mill town since 1794.



Here the wool is blended, carded, spun, plied, washed and labeled to create a finished yarn that is ready for knitting.

loft

fingering weight

50 gram skein

275 yards

100% Wyoming-grown Targhee-Columbia wool

A gently spun, minimally processed 2-ply wool designed for featherweight lace shawls, pillowy colorwork and elegant layering garments



order loft online



shelter

worsted weight

50 gram skein

140 yards

100% US Targhee-Columbia Wool

Our workhorse wool is the perfect yarn for cozy sweaters and accessories that are lightweight and warm



order shelter online

palette

Our yarns come in a custom-designed range of 32 heathered shades.

Each blend is created using multiple colors from 11 base solids. This process lends a beautiful cross-range harmony to the entire palette.

- 1 long johns
- 2 camper
- 3 wool socks
- 4 embers
- 5 hayloft
- 6 sap
- 7 foothills
- 8 fauna
- 9 tent
- 10 birdbook
- 11 artifact
- 12 button jar
- 13 faded quilt
- 14 almanac
- 15 old world
- 16 stormcloud
- 17 truffle hunt
- 18 postcard
- 19 blanket fort
- 20 homemade jam
- 21 thistle
- 22 plume
- 23 woodsmoke
- 24 barn owl
- 25 nest
- 26 meteorite
- 27 pumpernickel
- 28 fossil
- 29 snowbound
- 30 sweatshirt
- 31 soot
- 32 cast iron

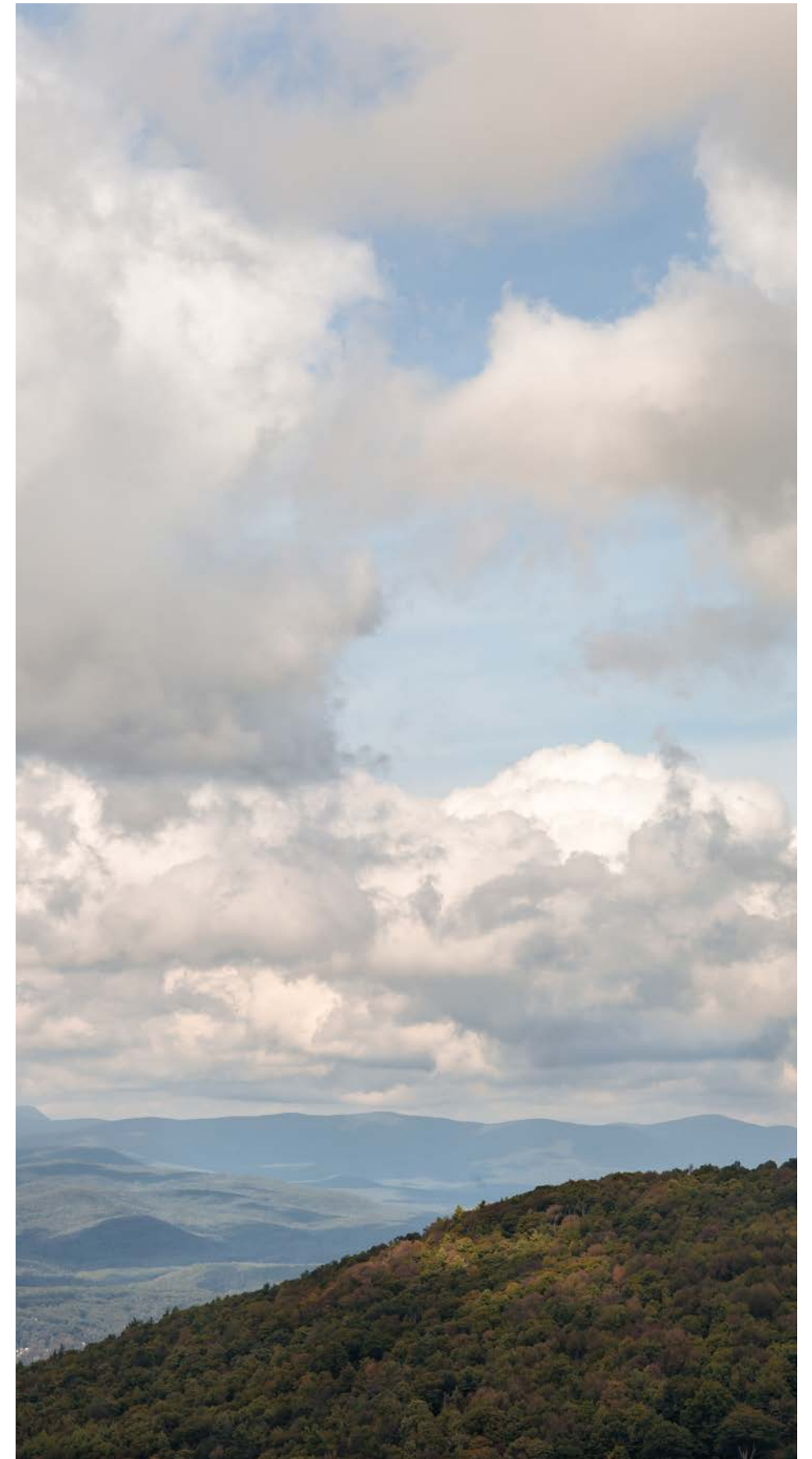




shoot notes

Armed with both cell phone and DSLR cameras, we asked our creative team to document some of the behind-the-scenes moments from our September photoshoot at Losee Cottage (pictured) in Cragmoor, NY, in the heart of the Shawangunk mountains.

The collage of photos that follows gives a glimpse into our team's image-creation process.













what is Wool People?

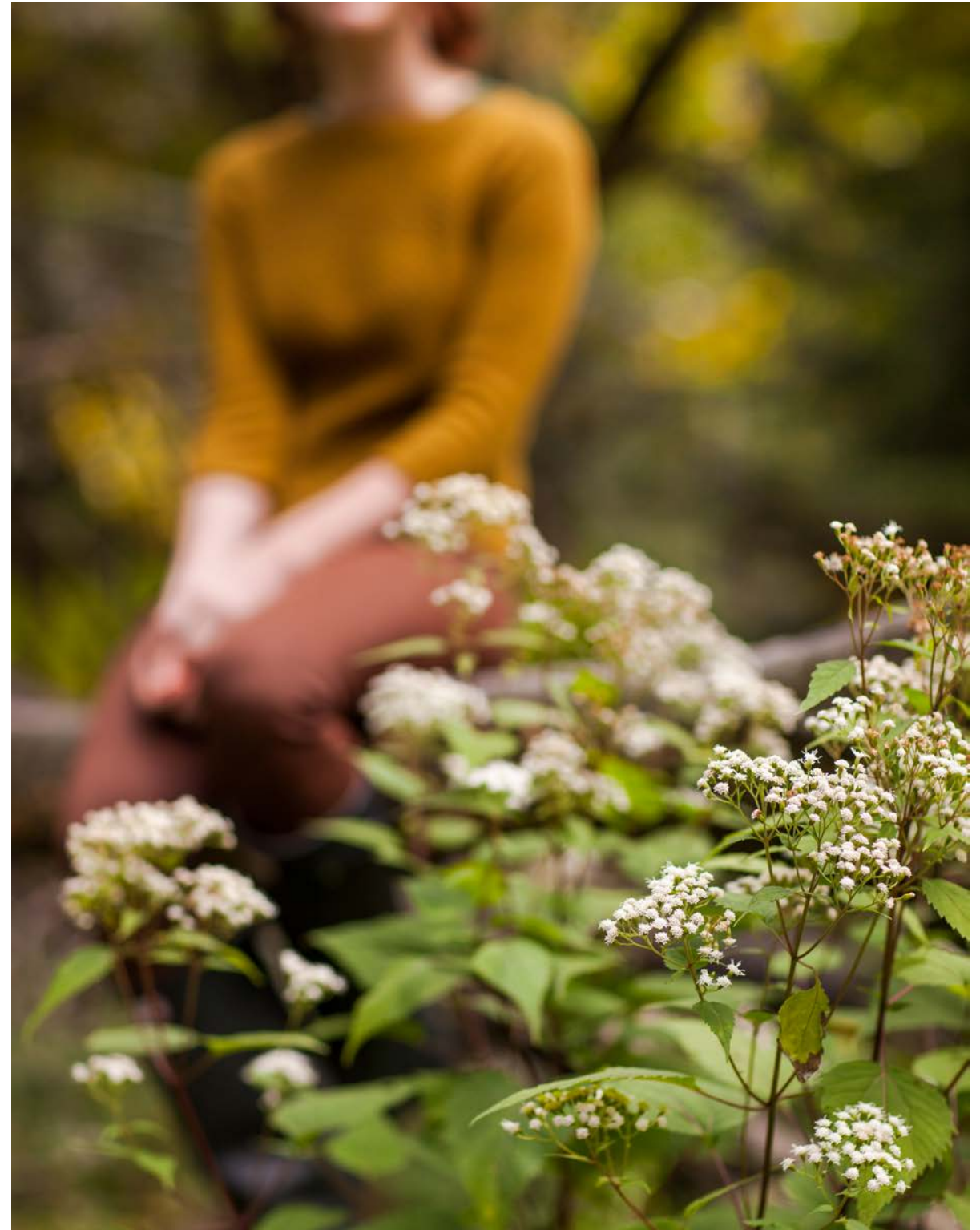
Wool People is a semi-annual design series hosted by Brooklyn Tweed that features current work from independent handknitting designers from around the world.

With each collection, contributors are given the chance to realize design ideas that excite and challenge them. Finished designs and patterns are photographed and produced by BT's creative team.

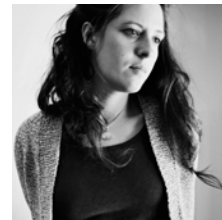
Upon release of each collection, patterns are made available to knitters as downloadable PDF files. A generous portion of each pattern sale goes directly to the individual designer for the lifetime of that pattern.

We believe that compensating designers fairly for their work is an important part of sustaining creative energy and quality design in our industry.

We also believe in the power of creative collaboration. Working with so many talented people – connected by a deep passion for knitting – is a true joy.



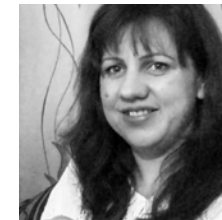
meet the designers



amy christoffers

Amy Christoffers is a knitwear designer living in rural Vermont with her husband, son and cat. They live in a tiny house that is surrounded by trees and stuffed full of books and yarn.

www.savoryknitting.com



irina dmitrieva

Irina Dmitrieva is a Ukrainian knitwear designer who specializes in cable knits. Her thoughtful accessory patterns are known for their special attention to detail and seamless integration of unique cable patterns.

www.myknitland.blogspot.com



grace anna farrow

Grace Anna Farrow learned how to knit on pickup sticks when she was in the third grade. In the many years that followed she has grown into a knitter hailed by Vogue Knitting as "the advanced knitter's best friend". She is the author of The Fine Line.

www.astichtowear.com



carol feller

Carol Feller is an independent knitwear designer and knitting teacher. Her patterns for men, women, and children are widely published in books and magazines, including Knitting in the Sun (Wiley, 2009), Twist Collective, Interweave Knits, and Knitty.

You can find her self-published patterns and e-books on her website.

She lives in Cork, Ireland, with her husband, four sons, and a large dog. Her first book, Contemporary Irish Knits, was published by Wiley in August 2011.

www.stolenstitches.com



carrie hoge

Carrie Bostick Hoge lives in Maine with her husband and baby girl. She works as Art Director for Quince & Company during the week and plays in her backyard studio for Madder on the weekends.

www.swatchdiaries.blogspot.com



bristol ivy

Bristol is a knitting designer and fiber artist from Portland, Maine. Her work focuses on the intersection between classic tailoring and innovative technique, creating a unique and wearable aesthetic while maintaining knitterly appeal.

www.blackbirdturning.blogspot.com



ann-marie jackson

Ann-Marie Jackson is a Canadian knitwear designer, landscape designer, and organic farmer. She strives for craftsmanship, texture, and comfort in all her design work.

Along with knitting, she keeps busy taking Polaroid photos, making jam, and playing her ukulele.

www.caribouknits.com



gudrun johnston

Gudrun Johnston is a Scottish knitwear designer born in the Shetland Islands. Her work often incorporates traditional Shetland techniques and motifs, featuring these timeless design elements in a contemporary context.

She has made a name for herself among a new generation of knitwear designers, using the Internet to directly interact with an international community of knitters.

www.theshetlandtrader.com

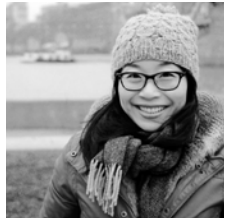


ann mccauley

After enjoying a long performance career in modern dance that was a peak life experience, Ann found knitwear design as her next creative outlet. Ann grew up in rural Virginia and now makes her home outside of Boulder, Colorado.

She is the author of "The Pleasures of Knitting: Timeless Feminine Sweaters" and "Together or Separate: Knitting the New Twinset." Ann enjoys traveling the country to teach knitting and design. Her design workshop is now available online at Craftsy.com. She has also been featured in the Knitty Gritty episode "Delightful Details."

www.annmccauleyknits.com



kyoko nakayoshi

Kyoko Nakayoshi is the designer behind Cotton & Cloud knitwear designs. Born in Japan, Kyoko came to the UK as a teenager and now lives in London, where the vibrant cosmopolitan atmosphere fuels her creative imagination.

Under the slogan of “Unique Knits – Timeless Style”, Cotton & Cloud offers innovative designer knitting patterns for elegant knitwear that is perfect for all ages and occasions.

A champion of fun, ethical and creative living, Kyoko’s design inspiration is focused on new discovery and producing long-lasting, hand-made clothing of unique personal value.

www.cottonandcloud.com



leila raabe

Leila is a member of the Brooklyn Tweed Team, and resides in Portland, Maine where she oversees operations at BT’s yarn warehouse.

Leila’s design work is known for smart details and knitterly appeal. Though she is accustomed to operating behind the scenes, she enjoys contributing design work for Wool People.

www.ravelry.com/designers/leila-raabe

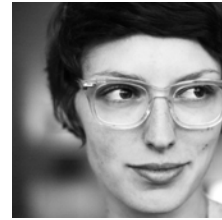


andrea rangel

Andrea Rangel knits and designs in Cowichan Bay, Canada. She loves the functionality and beauty of knitting and knits everything from head to toe.

Her designs have been featured in several print and online publications including Twist Collective, Interweave Knits, and KnitScene.

www.andreaknits.com



dianna walla

Dianna lives in Seattle, Washington where she designs knitwear and runs Paper Tiger Arts & Crafts.

Her inspiration and motivation come from the world around her: from the people and the places and things that pass through her life, whether permanent or transient. She’s a lifelong learner and a perpetual optimist.

www.paper-tiger.net

keep in touch

click the links below to keep up with BT on your favorite social media sites



facebook



instagram



pinterest



ravelry



twitter





creative team

photography	Jared Flood
wardrobe styling	Stephanie Gelot
photoshoot producer	Jess Morpew
photo assistant	Allison Page
hair & makeup	Megumi Kashimura
models	April Panitz Kristi Wilson
location	Losee Cottage Cragmoor, New York

production

look book design	Jared Flood
pattern layout	Julie Hoover
senior tech editing	Robin Melanson
counter tech editing	Christine Craig Sue McCain
technical illustrations	Jared Flood
copy editing & proofing	Bristol Ivy Leila Raabe
sample knitting	Nicole Dupuis
project coordination	Bristol Ivy Leila Raabe
fulfillment	Ethan MacDonald



www.brooklyntweed.net